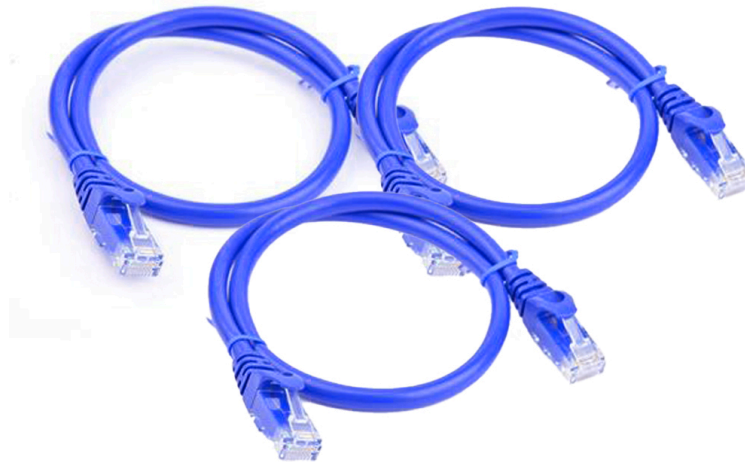


4XEM 6FT Cat6 Molded RJ45 UTP Network Patch Cable (Blue) - 3 Pack

4XEM Part- 4XC6PATCH6BL3PK



Elevate your network connectivity with the 4XEM 6FT Cat6 Molded RJ45 UTP Network Patch Cable, a true game-changer in the world of data transmission.

Designed for CAT6, this cable boasts a 250 MHz cable rating, making it ideal for high-speed data transfers, whether it's for work, gaming, or streaming. Its RJ-45 Male connectors with EIA/TIA 568B Pinout on both ends ensure a secure and stable connection every time.

Crafted with a PVC jacket, this cable is built to withstand everyday wear and tear, while its 26 AWG Copper-Clad Aluminum conductor offers optimal signal conductivity. With a slim 0.20-inch cable OD, this cable is both flexible and space-saving, making it perfect for tight setups.

The 6-foot length provides just the right amount of reach for your networking needs, and its lightweight design ensures portability and easy installation.

**4XEM Products Are Available At Your Favorite Online Retailers**

**WWW.4XEM.COM**

Contact Todd Schaus 4XEM sales Rep  
1-866-999-4936 Ext.104    [tschaus@4xem.com](mailto:tschaus@4xem.com)



## Features

- Package of 3 separate CAT6 cables
- CAT6 rated for high-speed data (250 MHz).
- 6-foot length
- RJ-45 Male connectors with EIA/TIA 568B Pinout.
- Durable PVC jacket
- Unshielded stranded twisted pair cable design
- 26 AWG Copper-Clad Aluminum conductor
- Slim 0.20-inch cable diameter
- Stylish blue color.

## Application

- Perfect for use in home networks, small office setups, or anywhere reliable Ethernet connectivity is needed
- Affordable yet dependable, this patch cable offers excellent value for your networking needs.
- Compatible with a wide range of devices including computers, routers, switches, gaming consoles, and more.
- Durable molded connectors provide strain relief and protect against damage, ensuring long-lasting performance



**4XEM Products Are Available At Your Favorite Online Retailers**



|                          |   |   |
|--------------------------|---|---|
| Warranty Information     | Warranty  | Lifetime  |
| Performance              | Cable Rating  | CAT6 - 250 MHz  |
| Connector(s)             | Connector A<br>Connector B  | RJ-45 Male - EIA/TIA 568B Pinout<br>RJ-45 Male - EIA/TIA 568B Pinout                                |
| Hardware                 | Cable Jacket Material<br>Snagless<br>Shielding  | PVC (Polyvinyl Chloride)<br>No<br>No  |
| Physical Characteristics | Colour<br>Conductor Type<br>Wire Gauge<br>Cable OD<br>Cable Length<br>Weight of Product | Blue<br>CCA (Copper-Clad Aluminum)<br>26 AWG<br>0.20 in [5.0 mm]<br>6 ft [1.82 m]<br>1.48 oz [42 g] |
| Packaging Information    | Package Height<br>Package Width<br>Package Length<br>Shipping (Package) Weight          | 6.89 in [175 mm]<br>5.71 in [145 mm]<br>2.88 in [73.1 mm]<br>4.65 oz [131.8 g]                      |
| What's in the Box        | Included in Package   | 3x 6 ft Cat 6 Patch Cable - Blue  |

\* Product appearance and specifications are subject to change without notice.

\* Same day shipping is only available for orders shipping within the United States.

**4XEM Products Are Available At Your Favorite Online Retailers**

**WWW.4XEM.COM**

**Contact Todd Schaus 4XEM sales Rep**  
**1-866-999-4936 Ext.104    tschaus@4xem.com**

