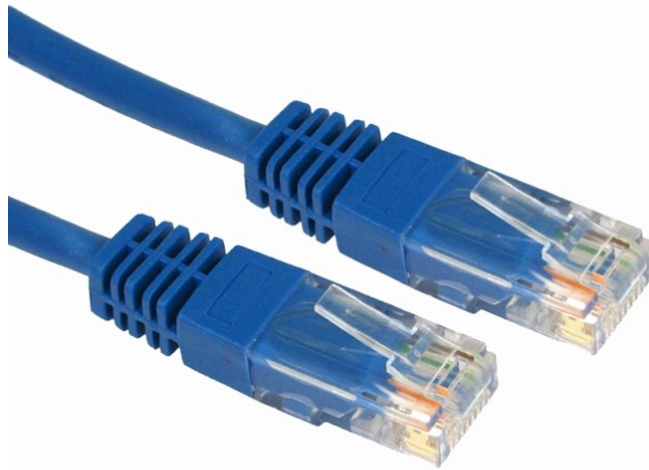


4XEM 100FT Cat6 Molded RJ45 UTP Network Patch Cable (Blue)

4XEM Part- 4XC6PATCH100BL



Introducing the 4XEM 100FT Cat6 Molded RJ45 UTP Network Patch Cable, the perfect solution for all your high-speed networking needs. Designed to meet CAT6 - 250 MHz standards, this cable provides lightning-fast data transfer speeds. Its RJ-45 Male connectors with EIA/TIA 568B Pinout on both ends guarantee compatibility with a wide range of devices and networks, making it a versatile addition to your connectivity arsenal.

Crafted with quality in mind, the cable jacket is made of durable PVC (Polyvinyl Chloride), ensuring longevity even in demanding environments.

Upgrade your network with the 4XEM 100FT Cat6 Molded RJ45 UTP Network Patch Cable, and experience the benefits of top-notch quality, high-speed performance, and a lifetime of reliable connectivity. Order yours today and stay connected effortlessly.

**4XEM Products Are Available At Your Favorite Online Retailers**

**WWW.4XEM.COM**

Contact Todd Schaus 4XEM sales Rep  
1-866-999-4936 Ext.104    [tschaus@4xem.com](mailto:tschaus@4xem.com)



## Features

- CAT6 - 250 MHz for high-speed data transfer
- 100-foot length
- RJ-45 Male connectors with EIA/TIA 568B Pinout on both ends
- Durable PVC (Polyvinyl Chloride) jacket
- Copper-Clad Aluminum (CCA) conductors with 26 AWG wire gauge
- Unshielded stranded twisted pair cable configuration
- Neatly packaged with included 100 ft Cat 6 Patch Cable – Blue
- Easy and reliable network connectivity
- Lifetime warranty

## Application

- Perfect for use in home networks, small office setups, or anywhere reliable Ethernet connectivity is needed
- Affordable yet dependable, this patch cable offers excellent value for your networking needs.
- Compatible with a wide range of devices including computers, routers, switches, gaming consoles, and more.
- Durable molded connectors provide strain relief and protect against damage, ensuring long-lasting performance



**4XEM Products Are Available At Your Favorite Online Retailers**



Warranty Information	Warranty	Lifetime
Performance	Cable Rating	CAT6 - 250 MHz
Connector(s)	Connector A Connector B	RJ-45 Male - EIA/TIA 568B Pinout RJ-45 Male - EIA/TIA 568B Pinout
Hardware	Cable Jacket Material Snagless Shielding	PVC (Polyvinyl Chloride) No No
Physical Characteristics	Colour Conductor Type Wire Gauge Cable OD Cable Length Weight of Product	Blue CCA (Copper-Clad Aluminum) 26 AWG 0.20 in [5.0 mm] 100 ft [30.5 m] 20.74 oz [588 g]
Packaging Information	Package Height Package Width Package Length Shipping (Package) Weight	9.84 in [250 mm] 8.07 in [205 mm] 2.42 in [61.5 mm] 20.81 oz [590 g]
What's in the Box	Included in Package	100 ft Cat 6 Patch Cable - Blue

\* Product appearance and specifications are subject to change without notice.

\* Same day shipping is only available for orders shipping within the United States.

**4XEM Products Are Available At Your Favorite Online Retailers**

**WWW.4XEM.COM**

**Contact Todd Schaus 4XEM sales Rep**  
**1-866-999-4936 Ext.104    tschaus@4xem.com**

