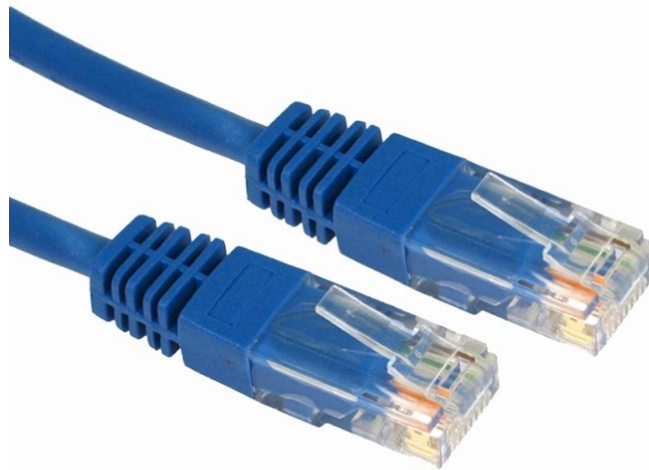


4XEM 25FT Cat5e Molded RJ45 UTP Network Patch Cable (Blue)

4XEM Part- 4XC5EPATCH25BL



Elevate your network connectivity with the 4XEM 25FT Cat5e Molded RJ45 UTP Network Patch Cable, a true game-changer in the world of data transmission.

Designed for CAT5e, this cable boasts a 100 MHz cable rating, making it ideal for high-speed data transfers, whether it's for work, gaming, or streaming. Its RJ-45 Male connectors with EIA/TIA 568B Pinout on both ends ensure a secure and stable connection every time.

Crafted with a PVC jacket, this cable is built to withstand everyday wear and tear, while its 26 AWG Copper-Clad Aluminum conductor offers optimal signal conductivity. With a slim 0.20-inch cable OD, this cable is both flexible and space-saving, making it perfect for tight setups.

The 25-foot length provides just the right amount of reach for your networking needs, and its lightweight design ensures portability and easy installation.

4XEM Products Are Available At Your Favorite Online Retailers

WWW.4XEM.COM

Contact Todd Schaus 4XEM sales Rep
1-866-999-4936 Ext.104 tschaus@4xem.com



Features

- CAT5e rated for high-speed data (100 MHz).
- 25-foot length
- RJ-45 Male connectors with EIA/TIA 568B Pinout.
- Durable PVC jacket
- Unshielded stranded twisted pair cable design
- 26 AWG Copper-Clad Aluminum conductor
- Slim 0.20-inch cable diameter
- Stylish blue color.

Application

- Perfect for use in home networks, small office setups, or anywhere reliable Ethernet connectivity is needed
- Affordable yet dependable, this patch cable offers excellent value for your networking needs.
- Compatible with a wide range of devices including computers, routers, switches, gaming consoles, and more.
- Durable molded connectors provide strain relief and protect against damage, ensuring long-lasting performance



4XEM Products Are Available At Your Favorite Online Retailers



Warranty Information	Warranty	Lifetime
Performance	Cable Rating	CAT5E - 100 MHz
Connector(s)	Connector A Connector B	RJ-45 Male - EIA/TIA 568B Pinout RJ-45 Male - EIA/TIA 568B Pinout
Hardware	Cable Jacket Material Snagless Shielding	PVC (Polyvinyl Chloride) No No
Physical Characteristics	Colour Conductor Type Wire Gauge Cable OD Cable Length Weight of Product	Blue CCA (Copper-Clad Aluminum) 26 AWG 0.20 in [5.0 mm] 25 ft [7.62 m] 5.78 oz [164 g]
Packaging Information	Package Height Package Width Package Length Shipping (Package) Weight	7.87 in [200 mm] 6.30 in [160 mm] 1.18 in [30 mm] 5.86 oz [166 g]
What's in the Box	Included in Package	25 ft Cat 5E Patch Cable - Blue

* Product appearance and specifications are subject to change without notice.

* Same day shipping is only available for orders shipping within the United States.

4XEM Products Are Available At Your Favorite Online Retailers

WWW.4XEM.COM

Contact Todd Schaus 4XEM sales Rep
1-866-999-4936 Ext.104 tschaus@4xem.com

