

NUVOLA BOLD FIVE LIGHTS - PENDANT

NUVOLA FIVE LIGHTS FLOATS IN SPACE LIKE A JEWEL HANGING FROM THE CEILING, HOOKED AT THE END OF A LEATHER CORD THAT HAS BEEN HAND-KNOTTED AROUND THE BRASS TUBE: A PERFECT EQUILIBRIUM OF CONTRASTING MATERIALS, WITH OBSESSIVE ATTENTION TO DETAIL.

NUVOLA BOLD FIVE LIGHTS - PENDANT

DIMENSIONS: H 48" • DIAM VARIABLE: 28,7" TO 35,8"

H 120CM • DIAM VARIABLE: 73CM TO 91CM

WEIGHT: 10LB • 4,5KG

MINIMUM HEIGHT: 53" • 135CM

INCLUDED HEIGHT: 63" • 160CM

MATERIALS: MACHINED BRASS, HAND-BLOWN GLASS,
BRAIDED CALFSKIN

LIGHT SOURCE: PROPRIETARY 24VCC LED • 5 X 5W • 2700K

REMOTE-LOCATED PHASE CUT DIMMABLE DRIVER 120V OR 230V

0-10V DIMMABLE DRIVER ON REQUEST

CANOPY FOR BUILT-IN DRIVER ON REQUEST

METAL OPTIONS:

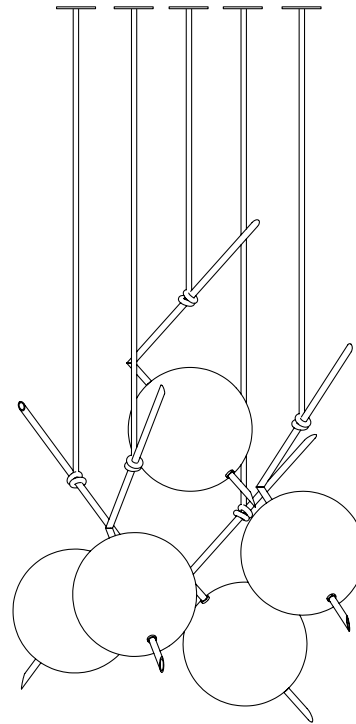
POLISHED BRASS, BRUSHED BRASS

AGED BRASS, DARKENED BRASS, BRUSHED NICKEL

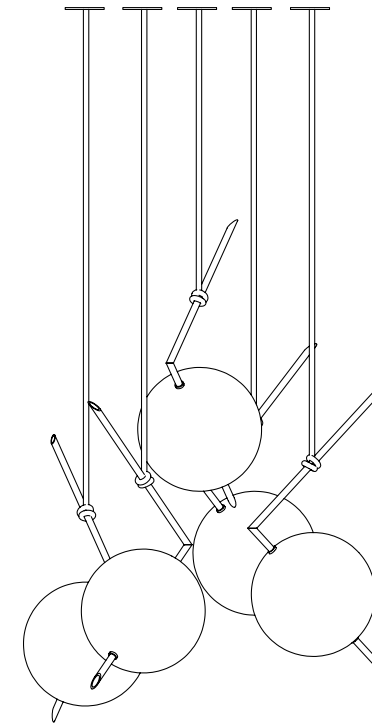
SATIN SILVER, TARNISHED SILVER

GLASS OPTIONS:

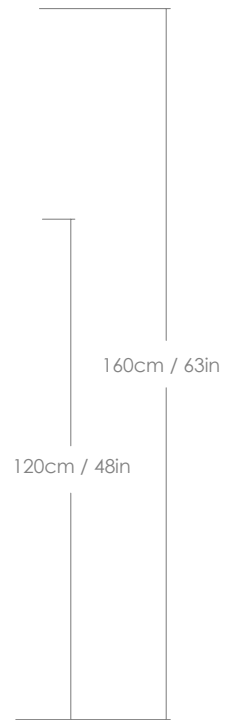
CLEAR, STARDUST WHITE



85cm / 33,5in



87cm / 34,3in



EACH PIECE IS MADE TO ORDER BY ITALIAN ARTISANS, FINISHED,
AND ASSEMBLED IN OUR STUDIO IN ITALY. CUSTOMIZATIONS
ARE AVAILABLE. ALL FINISHES CAN BE LACQUERED ON
REQUEST.
CUSTOM ORDERS REQUIRE A 50% NON-REFUNDABLE DEPOSIT.

METAL FINISHES

SILVIO MONDINO STUDIO INTENTION IS TO DELIVER PRODUCTS THAT REFLECT OUR COMMITMENT TO GREAT DESIGN, MATERIAL INTEGRITY, AND HIGH CRAFTSMANSHIP.

WE PUT THE UTMOST CARE INTO MAKING EACH OF OUR PRODUCTS.

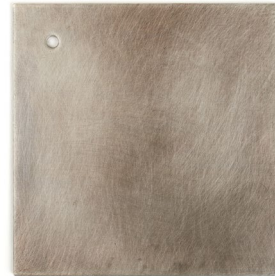
ALL OF OUR FINISHES ARE HAND-APPLIED, DEPENDING ON THE FINISH OR THE CLIENT’S NEEDS, THE BRASS CAN BE SEALED TO NOT CHANGE IN APPEARANCE OR UNSEALED TO PATINA BEAUTIFULLY OVER TIME.

AS A GENERAL RULE, WE RECOMMEND DUST GENTLY WITH A DUSTER OR SOFT RAG. PLEASE REFRAIN FROM USING ANY LIQUID OR CHEMICAL CLEANING SOLUTIONS AS THEY WILL AFFECT THE FINISH.

1 - UNLACQUERED:
THE FINISH IS “LIVE” AND CAN PATINA OVER TIME.

2 - LACQUERED:
THE FINISH IS HAND SEALED WITH A TINY LAYER OF TRANSPARENT LACQUER AND WILL NOT CHANGE OR PATINA OVER TIME.

3 - WAXED:
FINISH IS HAND SEALED WITH A TINY LAYER OF WAX, PROTECTING FROM PATINA OVER TIME, GIVING A SMOOTH TEXTURE TO THE SURFACES.



TARNISHED SILVER [3]



AGED BRASS [3]



DARKENED BRASS [2]



BLACKENED BRASS [3]



POLISHED BRASS [1]



BRUSHED NICKEL [1]



SATIN SILVER [2]



SATIN COPPER [2]



BRUSHED BRASS [2]

GLASS

SILVIO MONDINO STUDIO GLASSES ARE HAND-BLOWN BY ITALIAN ARTISANS.

SMALL DIFFERENCES IN SIZE OR SHAPE AS WELL AS MINOR IRREGULARITIES REVEAL THE CRAFTSMANSHIP AND UNDERLINE THE UNIQUENESS OF THE NON-INDUSTRIAL PROCESS.

CLEANING TIPS

AS A GENERAL RULE, MAKE SURE THE FIXTURE IS NOT ILLUMINATED OR WARM BEFORE CLEANING.

“AL LUSTRO” COLORS: SHOULD BE CLEANED WITH A SOFT, LINT-FREE, OR MICROFIBER CLOTH. PLEASE REFRAIN FROM USING LIQUID OR CHEMICAL CLEANING SOLUTIONS.

STARDUST WHITE: SHOULD BE CLEANED WITH A DUSTER OR SOFT RAG.

PLEASE REFRAIN FROM RUBBING AND DO NOT USE OILY SUBSTANCES.

GREASE STAINS CAN BE REMOVED USING ALCOHOL OR CITRIC ACID DISSOLVED IN DISTILLED WATER .



CLEAR



STARDUST WHITE



LEMON



FUMÉ



TOPAZ



TANGERINE



ROSE



BLUE

MATERIALS

01 - DARK HORN

02 - MONGOY WOOD

03 - CLASSIC GLOSSY MARQUINA MARBLE

04 - SATIN MARQUINA MARBLE

05 - BRAIDED CALFSKIN ROPE

06 - PALE BLOND HORSEHAIR

07 - DARK BROWN HORSEHAIR



01



02



03



04



05



06



07