



FULMINE THREE ELEMENTS PENDANT FLOOR

SOMEWHERE BETWEEN A PENDANT LIGHT AND A FLOOR LAMP, FULMINE (THUNDERBOLT) ENGAGES WITH GRAVITY IN AN INNOVATIVE AND PLAYFUL WAY. THE CENTRAL FORM, STRETCHED FROM EACH END, SEEMS TO RESIST ITS OWN, EMERGING, LIGHTNING-BOLT ZIG-ZAG FORM, CREATING AN ESSENTIAL MOTIF WITH A PUNCHY GRAPHIC APPEAL. FULMINE OFFERS A MODULAR SOLUTION FOR CREATING DIALOGUE WITH ARCHITECTURAL SPACES

FULMINE THREE ELEMENTS PENDANT / FLOOR

DIMENSIONS: H 61" • 24,5" • 17" H 155CM • 62CM • 43CM

GLASS GLOBE: Ø 9,4" Ø 24CM

WEIGHT: 39LB 18KG

MATERIALS: MACHINED BRASS, HAND-BLOWN GLASS

LIGHT SOURCE: PROPRIETARY 24VCC LED • 3 X 5W • 2700K

SUPPLY: PLUG-IN TRANSFORMER 100-240V 50/60HZ

LIGHT CONTROL: IN LINE ON-OFF SWITCH

DIMMER CONTROL ON REQUEST

METAL OPTIONS:

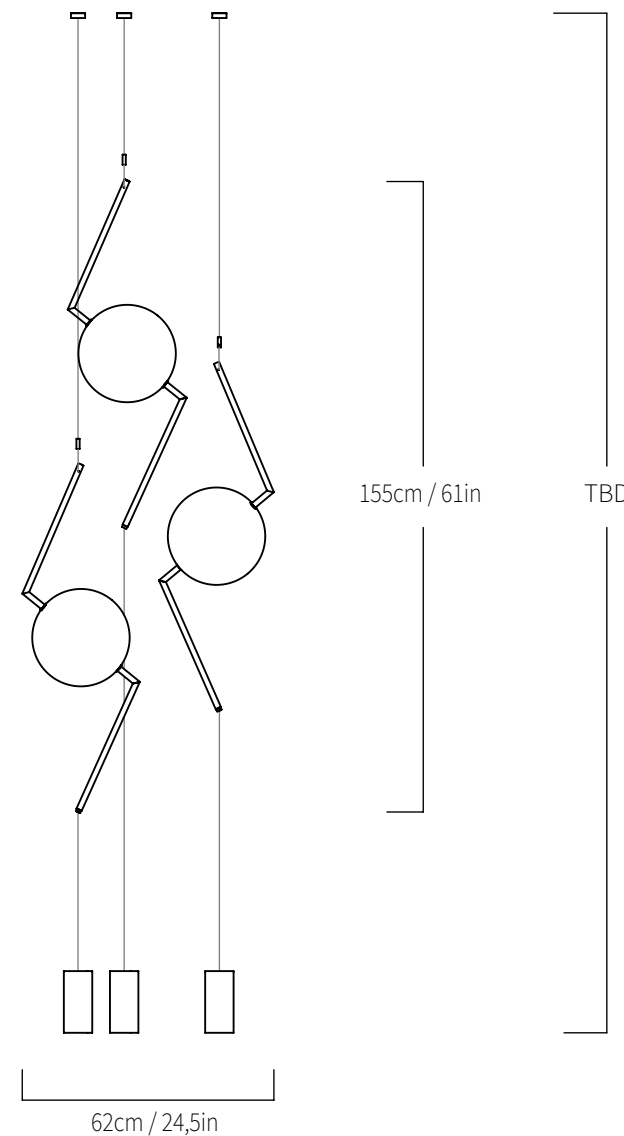
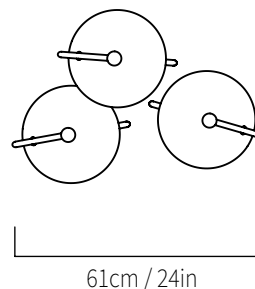
POLISHED BRASS, BRUSHED BRASS

AGED BRASS, DARKENED BRASS, SATIN COPPER

SATIN SILVER, TARNISHED SILVER

GLASS OPTIONS:

CLEAR, STARDUST WHITE, LUSTRO-PAINTED FUMÈ



EACH PIECE IS MADE TO ORDER BY ITALIAN ARTISANS, FINISHED, AND ASSEMBLED IN OUR STUDIO IN ITALY. CUSTOMIZATIONS ARE AVAILABLE. ALL FINISHES CAN BE LACQUERED ON REQUEST. CUSTOM ORDERS REQUIRE A 50% NON-REFUNDABLE DEPOSIT.

METAL FINISHES

SILVIO MONDINO STUDIO INTENTION IS TO DELIVER PRODUCTS THAT REFLECT OUR COMMITMENT TO GREAT DESIGN, MATERIAL INTEGRITY, AND HIGH CRAFTSMANSHIP.

WE PUT THE UTMOST CARE INTO MAKING EACH OF OUR PRODUCTS.

ALL OF OUR FINISHES ARE HAND-APPLIED, DEPENDING ON THE FINISH OR THE CLIENT'S NEEDS, THE BRASS CAN BE SEALED TO NOT CHANGE IN APPEARANCE OR UNSEALED TO PATINA BEAUTIFULLY OVER TIME.

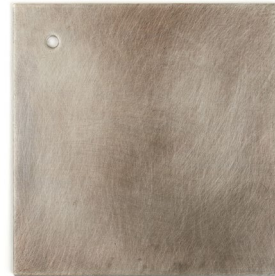
AS A GENERAL RULE, WE RECOMMEND DUST GENTLY WITH A DUSTER OR SOFT RAG.

PLEASE REFRAIN FROM USING ANY LIQUID OR CHEMICAL CLEANING SOLUTIONS AS THEY WILL AFFECT THE FINISH.

1 - UNLACQUERED:
THE FINISH IS "LIVE" AND CAN PATINA OVER TIME.

2 - LACQUERED:
THE FINISH IS HAND SEALED WITH A TINY LAYER OF TRANSPARENT LACQUER AND WILL NOT CHANGE OR PATINA OVER TIME.

3 - WAXED:
FINISH IS HAND SEALED WITH A TINY LAYER OF WAX, PROTECTING FROM PATINA OVER TIME, GIVING A SMOOTH TEXTURE TO THE SURFACES.



TARNISHED SILVER [3]



AGED BRASS [3]



DARKENED BRASS [2]



BLACKENED BRASS [3]



POLISHED BRASS [1]



BRUSHED NICKEL [1]



SATIN SILVER [2]



SATIN COPPER [2]



BRUSHED BRASS [2]

GLASS

SILVIO MONDINO STUDIO GLASSES ARE HAND-BLOWN BY ITALIAN ARTISANS.

SMALL DIFFERENCES IN SIZE OR SHAPE AS WELL AS MINOR IRREGULARITIES REVEAL THE CRAFTSMANSHIP AND UNDERLINE THE UNIQUENESS OF THE NON-INDUSTRIAL PROCESS.

CLEANING TIPS

AS A GENERAL RULE, MAKE SURE THE FIXTURE IS NOT ILLUMINATED OR WARM BEFORE CLEANING.

“AL LUSTRO” COLORS: SHOULD BE CLEANED WITH A SOFT, LINT-FREE, OR MICROFIBER CLOTH. PLEASE REFRAIN FROM USING LIQUID OR CHEMICAL CLEANING SOLUTIONS.

STARDUST WHITE: SHOULD BE CLEANED WITH A DUSTER OR SOFT RAG.

PLEASE REFRAIN FROM RUBBING AND DO NOT USE OILY SUBSTANCES.

GREASE STAINS CAN BE REMOVED USING ALCOHOL OR CITRIC ACID DISSOLVED IN DISTILLED WATER .



CLEAR



STARDUST WHITE



LEMON



FUMÉ



TOPAZ



TANGERINE



ROSE



BLUE