

Lafos

Quick Start

What do we have here?



Lafos

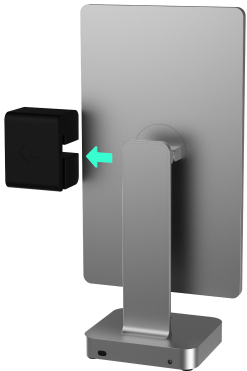


Power adapter



Connection cable

Remove the protective cap.



And maybe consider keeping the cap if you might ship it in the future. It is kind of very important.

Plug them in.



Please make sure all cables are plugged in all the way.

Power it up.



Current Lafos does not contain batteries and requires power connection at all times to operate.

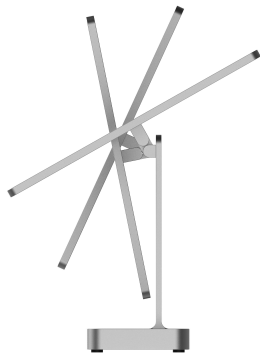
Now you are ready to go!



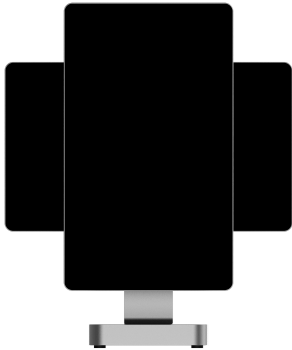
Lafos will automatically turn on seconds after you plug in your phone.

Enjoy.

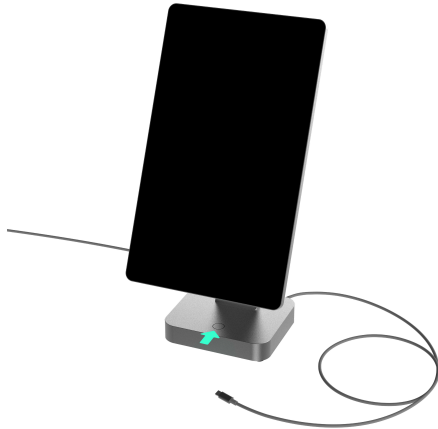
You may tilt it to your liking.



Or rotate it to view landscape content.



Press the button to turn on or off the screen.



The ring light tells you what's going on.



If it's breathing, it means Lafos is waking up or restarting.

If it's all lit up, it means Lafos is working.

The ring light will fade off 30 seconds after wake-up.

Oh and it charges your phone.



**For more info please visit:
www.lafos.com/support**