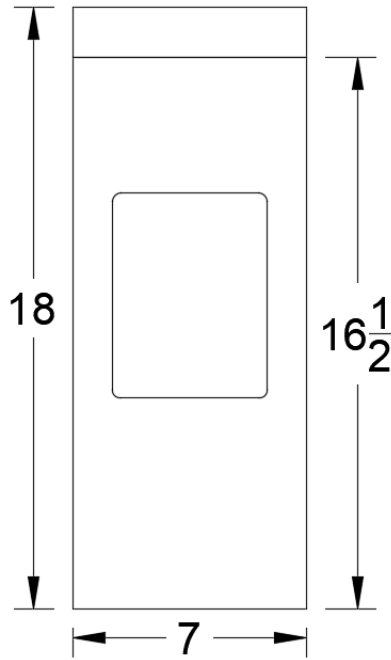
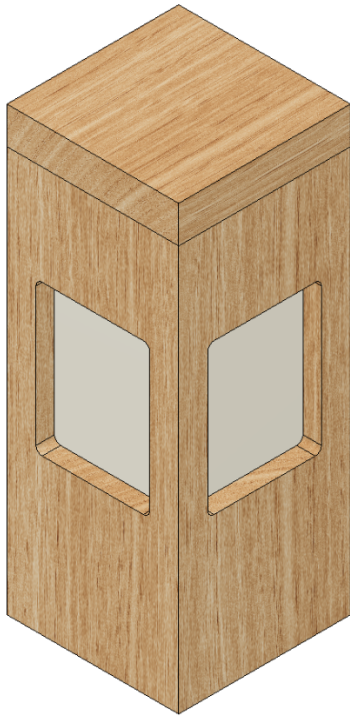


PEND OREILLE COLLECTION

LAMP 271

Lamp 271, a landscape bollard with four windows, illuminates your path or walkway with ambient lighting. This handcrafted lamp, crafted from the highest quality Western Red Cedar, is designed to withstand various weather conditions, including rain, snow, and ice. It's the perfect choice for your next project, combining durability and aesthetic appeal.



Elevation

PRODUCT DETAILS:

- Available in various corner detail options.
- Pending UL certification.
- Suitable for use in wet environments.
- Bollard is mounted to a metal base secured into concrete.
- Bandsawn finish lamps are sawn to dimension by bandsaw which leaves a textured finish. Great for customers who want a classic look.
- Smooth finish lamps are sanded to a consistent texture, very smooth to the touch. Great for customers who want a near perfect finish.

DETAILS	
MATERIAL:	Western Red Cedar
TEXTURE:	Bandsawn, Smooth
FINISH:	Unfinished, Natural Oil

OVERALL DIMENSIONS	
WIDTH:	7"
DEPTH:	7"
HEIGHT:	18"
WEIGHT:	6 lbs.

LIGHTING	
LIGHT SOURCE:	LED A19 Light Bulb
WATTAGE:	9W
VOLTAGE:	120V
COLOR TEMP:	2700k
LUMENS:	800
INCANDESCENT EQUIVALENCY:	60W
DIMMABLE:	Yes

INSTALLATION	
MOUNTING:	Ground Mounted
ELECTRIC WIRE LENGTH:	24"

SHIPPING	
BOX LENGTH:	10"
BOX WIDTH:	10"
BOX HEIGHT:	24"
BOX WEIGHT:	7 lbs.