



emi

DIGEST CATALOG EMIMANICURE
SPRING-SUMMER 2024



Bird of Passage

emi

YOUR MANICURE
YOUR STYLE

DIGEST CATALOG EMIMANICURE
SPRING-SUMMER 2024





E.MiLac 469 Siesta Hour
E.MiLac 475 Lime Splash
Naildress 131 Banana Republic







*E.MiLac 471 Sandcastle
 Charmicon 251 Maldives
 Charmicon 250 Reef
 Charmicon 252 Savanna
 Naildress129 Infinity
 Multiple Design Gel
 Foil Glossy Noble Gold
 Rhinestones*





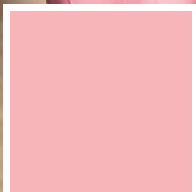
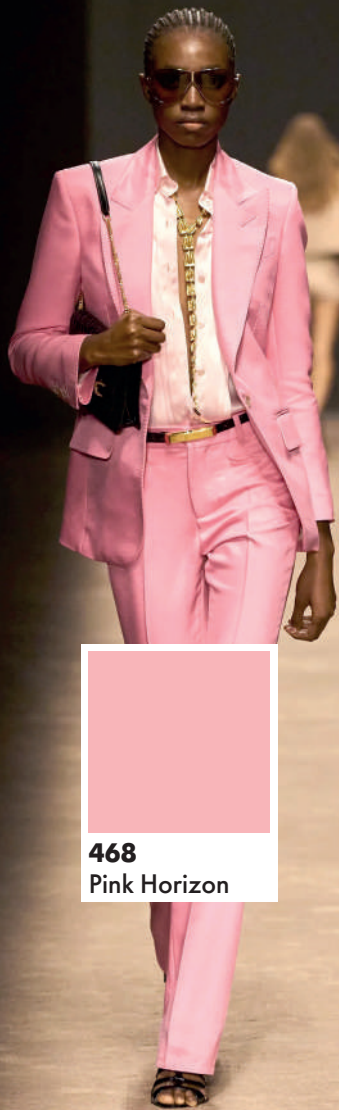
E.MiLac 469 Siesta Hour
E.MiLac 472 August Heat
E.MiLac 473 Fair Wind
E.MiLac 474 Siren Song
E.MiLac 475 Lime Splash



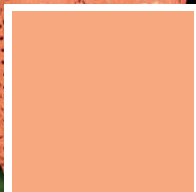


E.MiLac 468 Pink Horizon
E.MiLac 474 Siren Song
E.MiLac 364 Cotton
Multiple Design Gel
Foil Glossy Noble Gold
Empasta White Rafinad
Naildress132 Waltz of the Flowers
Naildress133 Tender Message
Stamping Plate15 Magic of Nature
Gemy Gel Clear

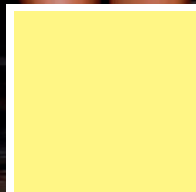
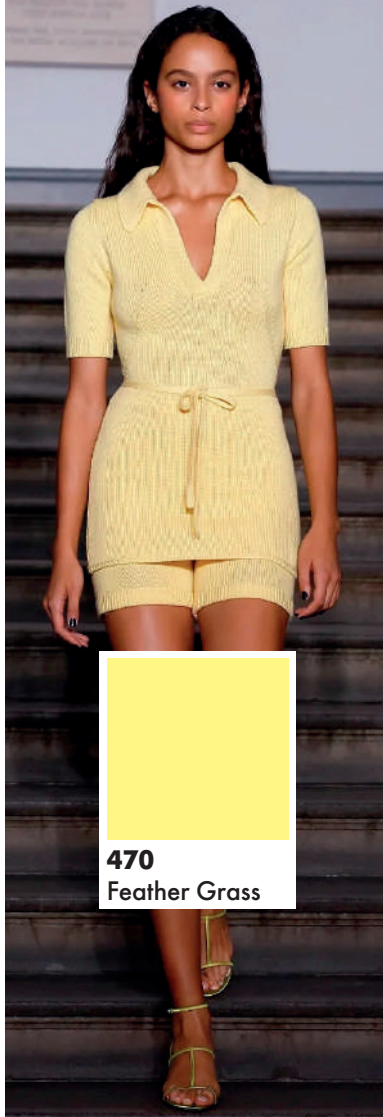




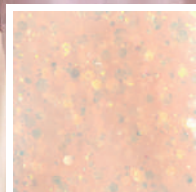
468
Pink Horizon



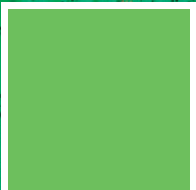
469
Siesta Hour



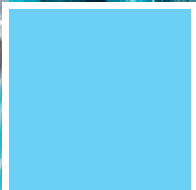
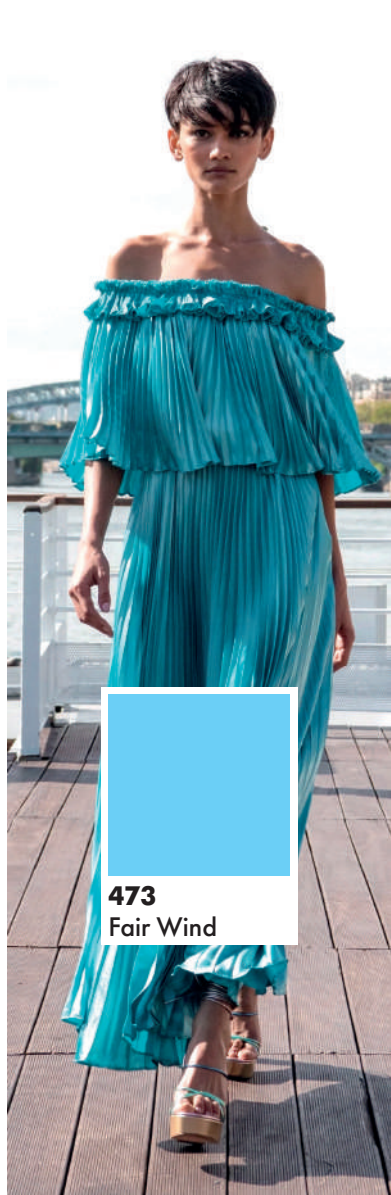
470
Feather Grass



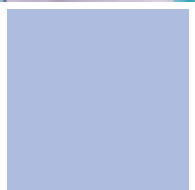
471
Sandcastle



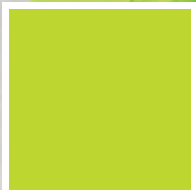
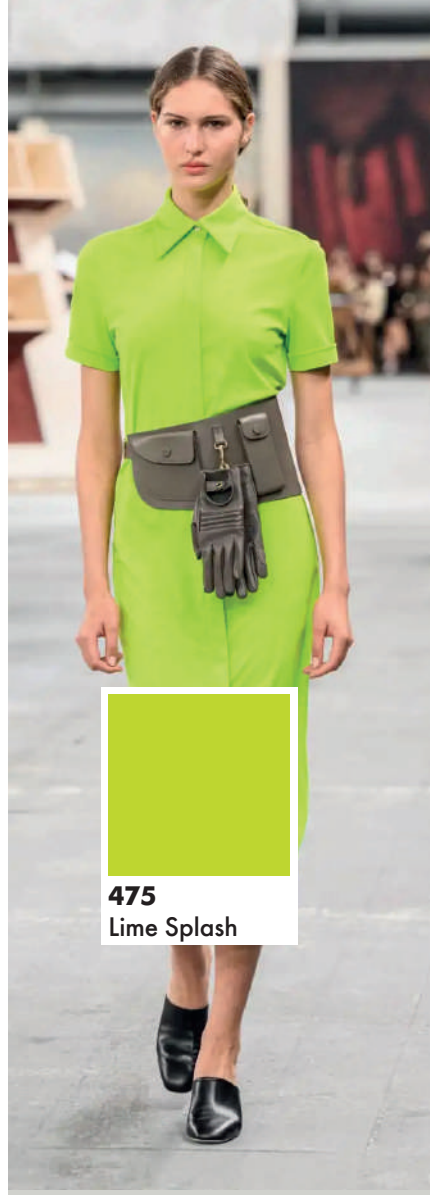
472
August Heat



473
Fair Wind



474
Siren Song



475
Lime Splash

ACID EXPLOSION

Fashion is made for self-expression, and the spring-summer season is the best time for it! Designers' collections are dominated by pink, orange, and yellow — vibrant and bright shades that accentuate the playful summer mood.





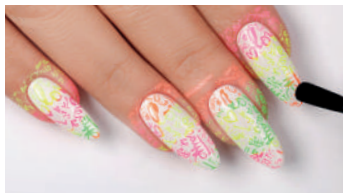
- E.MiLac 001 White Lotus
- E.MiLac 469 Siesta Hour
- E.MiLac 470 Feather Grass
- E.MiLac 472 August Heat
- E.MiLac 474 Siren Song
- E.MiLac 475 Lime Splash
- Nail Polish for Stamping W1 Mad Hatter
- Nail Polish for Stamping W2 Tea Party
- Nail Polish for Stamping W3 Pocket Watch
- Nail Polish for Stamping W5 Wonderland
- Stamping Plate 16 Inspiration
- Naildress 124 East
- Naildress 127 Individuality
- Charmicon 234 Summer Day
- Charmicon 245 Feelings
- Charmicon 247 Comics
- Charmicon 252 Savanna
- Multiple Design Gel
- Foil Glossy Noble Gold
- Gemty Gel Clear







1. Apply a decorative coating using E.MiLac 001 White Lotus. LED/CCFL — 2 min, UV — 2 min.



4. Apply E.MiLac Velvet Top Gel. LED/CCFL — 30 sec-1 min, UV — 2 min. Remove excess polish with Nail and Gel Polish Remover.



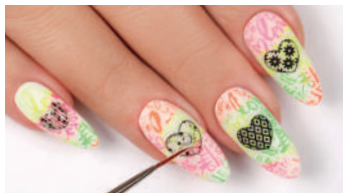
2. On the Stamping Plate 16 Inspiration apply Nail Polishes for Stamping W1 Mad Hatter, W2 Tea Party, W3 Pocket Watch, W5 Wonderland transferring the design to the silicone stamp for stamping.



5. Stick the elements from Charmicon 245 Feelings. Apply E.MiLac Velvet Top Gel. LED/CCFL — 30 sec-1 min, UV — 2 min.



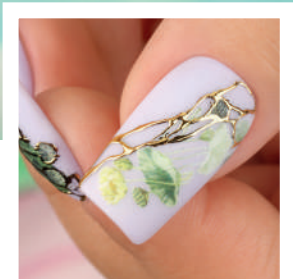
3. Print. Apply E.MiLac Tackless Top Gel. LED/CCFL — 30 sec-1 min, UV — 2 min.



6. With Gemyt Gel Clear, create volume on the hearts. LED/CCFL — 2 min, UV — 2 min.



E.MiLac 001 White Lotus
Nail Polish for Stamping W2 Tea Party
Nail Polish for Stamping W3 Pocket Watch
Nail Polish for Stamping W5 Wonderland
Nail Polish for Stamping W1 Mad Hatter
Stamping Plate 16 Inspiration
Charmicon 245 Feelings
Gemyt Gel Clear



E.MiLac 474 Siren Song
 E.MiLac 475 Lime Splash
 Naildress 124 East
 Multiple Design Gel
 Foil Glossy Noble Gold





E.MiLac 469 Siesta Hour
E.MiLac 474 Siren Song
Stamping Plate 16 Inspiration
Nail Polish for Stamping W3 Pocket Watch
Nail Polish for Stamping W6 Cheshire
Charmicon 247 Comics



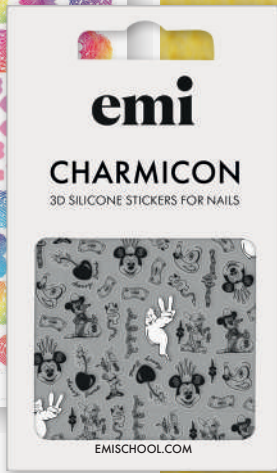
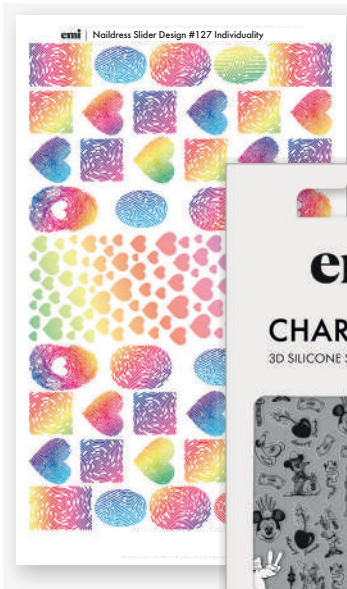
SCAN THE QR CODE
AND WATCH THE
MASTER CLASS





*E.MiLac 469 Siesta Hour
Stamping Plate 16 Inspiration
Nail Polish for Stamping W3 Pocket Watch
Charmicon 234 Summer Day
Charmicon 252 Savanna*

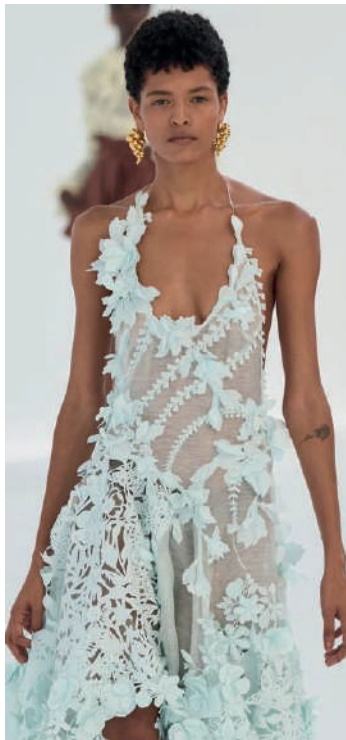




E.MiLac 470 Feather Grass
 E.MiLac 472 August Heat
 E.MiLac 474 Siren Song
 Naildress 127 Individuality
 Charmicon 237 Optimism
 Charmicon 247 Comics

FLORAL EMPORIUM

It's impossible to imagine the spring-summer season without flowers: this is the print that will never go out of style and is unlikely to ever leave the female wardrobe. In 2024, 3D flowers are particularly trendy.

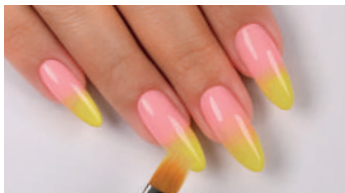




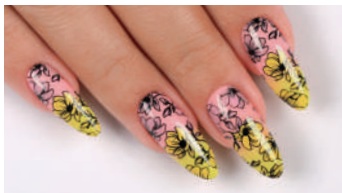
- E.MiLac 030 Black Gloss
- E.MiLac 347 All-in
- E.MiLac 468 Pink Horizon
- E.MiLac 469 Siesta Hour
- E.MiLac 470 Feather Grass
- E.MiLac 472 August Heat
- E.MiLac 473 Fair Wind
- Nail Polish for Stamping 02 Black
- Nail Polish for Stamping 04 Green
- Nail Polish for Stamping 05 Yellow
- Nail Polish for Stamping 07 Pink
- Nail Polish for Stamping 10 Light Blue
- Stamping Plate 15 Magic of Nature
- Naildress 28 Flight of Fancy
- Naildress 133 Tender Message
- Charmicon 228 Italics
- Charmicon 234 Summer Day
- Charmicon 252 Savanna
- Gemy Gel Clear



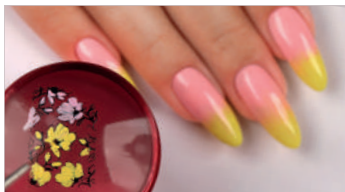




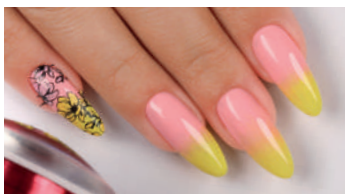
1. Apply a decorative coating using E.MiLac 468 Pink Horizon and 470 Feather Grass. LED/CCFL — 2 min, UV — 2 min. Apply Ultrabond and air dry.



4. Apply E.MiLac Top Gel Tackless. LED/CCFL — 30 sec-1 min, UV — 2 min. Remove excess polish with Nail and Gel Polish Remover.



2. On the Stamping Plate 15 Magic of Nature apply Nail Polish for Stamping 02 Black transferring the design to the silicone stamp for stamping. Fill in the flowers using Nail Polishes for Stamping 05 Yellow and 07 Pink.

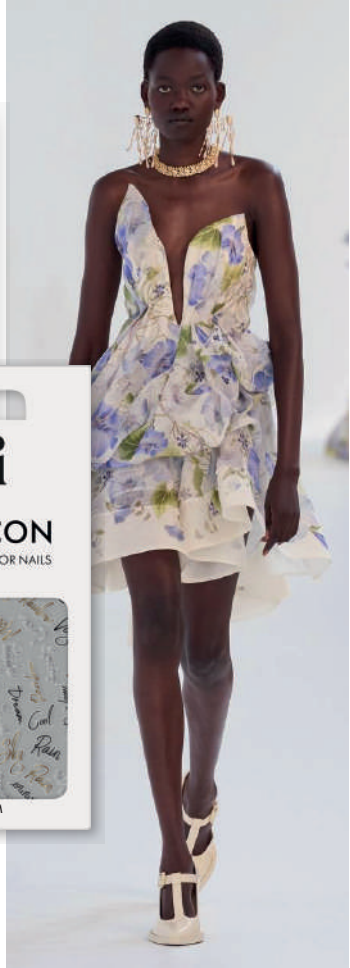
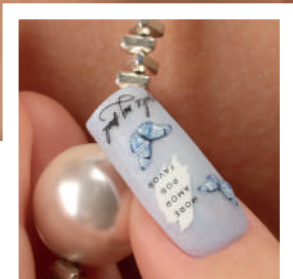
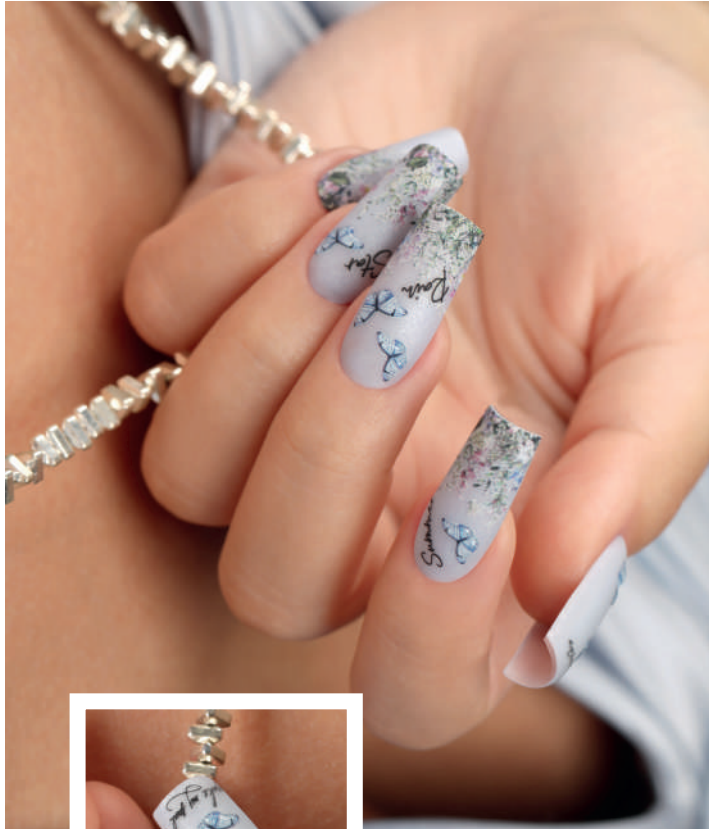


3. Print.

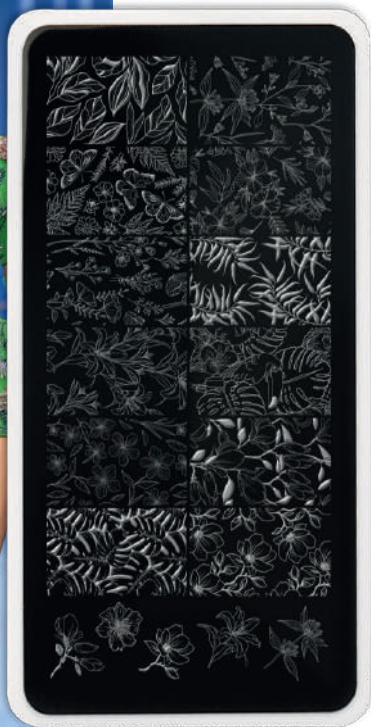
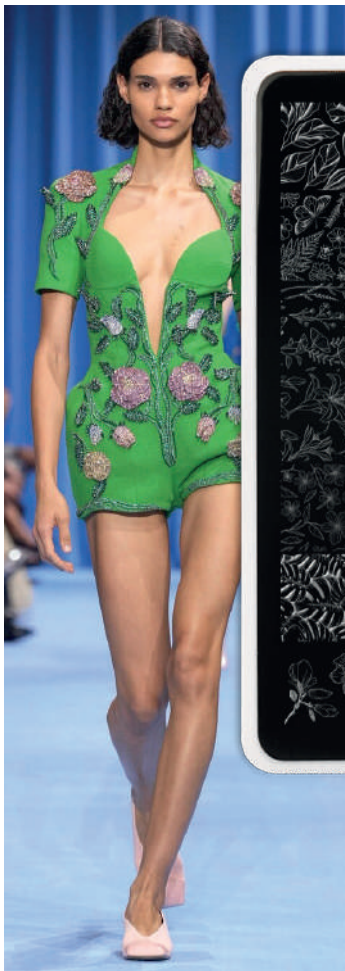


E.MiLac 468 Pink Horizon
Nail Polish for Stamping 02 Black
Nail Polish for Stamping 05 Yellow
Nail Polish for Stamping 07 Pink
Stamping Plate 15 Magic of Nature





E.MiLac 347 All-in
Naildress 128 Flight of Fancy
Charmicon 228 Italic
Charmicon 252 Savanna
Gemty Gel Clear



*E.MiLac 472 August Heat
Stamping Plate 15 Magic of Nature
Nail Polish for Stamping 02 Black
Nail Polish for Stamping 04 Green
Nail Polish for Stamping 07 Pink
Nail Polish for Stamping 10 Light Blue*

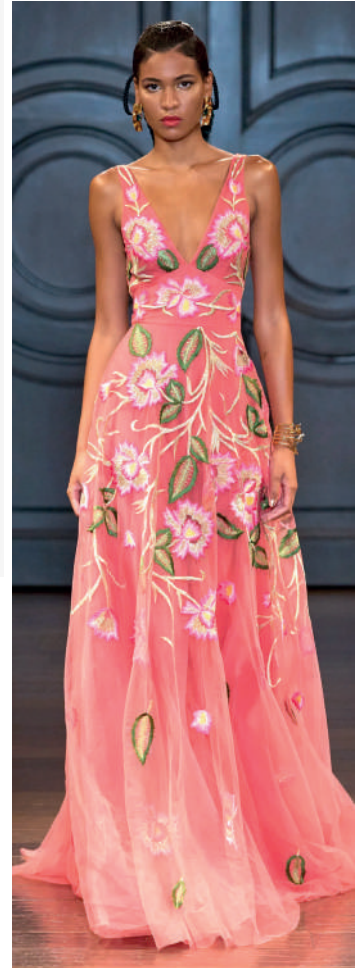




SCAN THE QR CODE
AND WATCH THE
MASTER CLASS



E.MiLac 469 Siesta Hour
E.MiLac 473 Fair WindNaildress
133 Tender Message





E.MiLac 030 Black Gloss
Naildress 128 Flight of Fancy
Charmicon 234 Summer Day

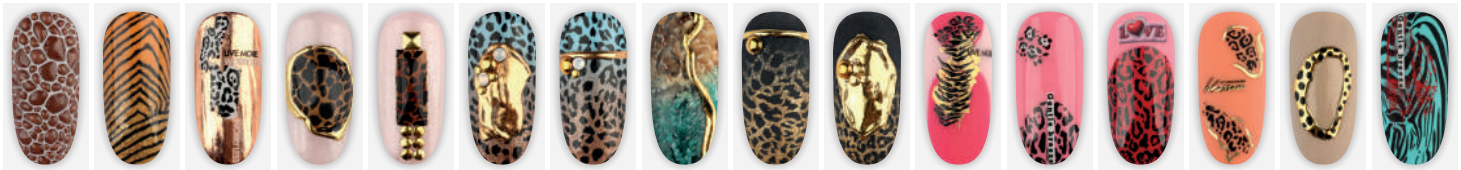
THE HUNTING SEASON

Safari aesthetics bring a considerable amount of gabardine and animalistic prints into the spring-summer 2024 season. For example, the creative director of Balmain takes everything from life (and prints) and offers python in three color variations in one look.

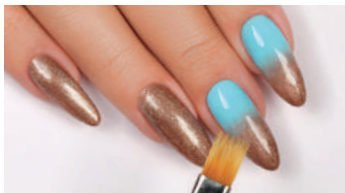




- E.MiLac 001 White Lotus
- E.MiLac 389 Swish of Silk
- E.MiLac 413 Breakfast at Tiffany's
- E.MiLac 440 Oasis
- E.MiLac 465 Cypress Wood
- E.MiLac 473 Fair Wind
- Stamping Plate 06 Prints
- Nail Polish for Stamping 02 Black
- Gel Paint Black Tulip
- Charmicon 162 Lines Black
- Charmicon 252 Savanna
- Empasta Black Tar
- Multiple Design Gel
- Foil Glossy Noble Gold
- Gemy Gel Clear
- Rhinestones 04 White Opal







1. On the middle and index fingers, apply the decorative coating E.MiLac 473 Fair Wind and 465 Cypress Wood. LED/CCFL — 2 min, UV — 2 min. Apply E.MiLac Top Gel Tackless to all nails. LED/CCFL — 30 sec-1 min, UV — 2 min.



4. Stick the elements from Charmicon 162 Lines Black. Apply E.MiLac Top Gel Tackless. LED/CCFL — 30 sec-1 min, UV — 2 min.



2. On the Stamping Plate 06 Prints apply Nail Polish for Stamping 02 Black transferring the design to the silicone stamp for stamping. Print.



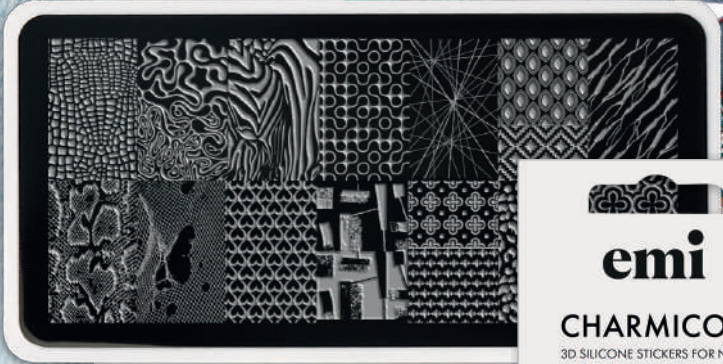
5. Perform the inlay using the Rhinestones 04 White Opal on the base of E.MiLac Sculpt-Maxi Base Gel. LED/CCFL — 1 min, UV — 2 min.



3. Apply E.MiLac Top Gel Tackless. LED/CCFL — 30 sec-1 min, UV — 2 min. Remove excess polish with Nail and Gel Polish Remover.

E.MiLac 473 Fair Wind
E.MiLac 465 Cypress Wood
Stamping Plate 06 Prints
Nail Polish for Stamping 02 Black
Charmicon 162 Lines Black
Rhinestones 04 White Opal

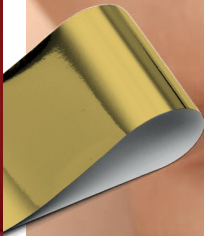
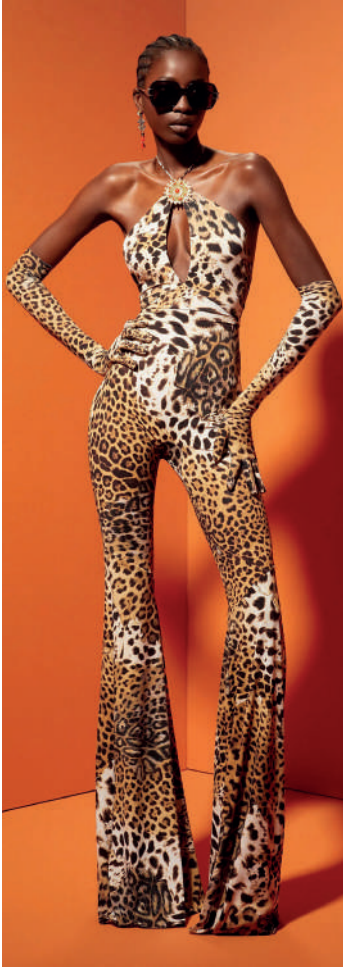




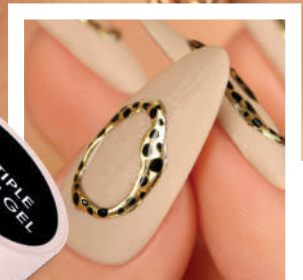
SCAN THE QR CODE
AND WATCH THE
MASTER CLASS



E.MiLac 413 Breakfast at Tiffany's
E.MiLac 473 Fair Wind
Stamping Plate 06 Prints
Nail Polish for Stamping 02 Black
Multiple Desgin Gel
Foil Matte Blood Red
Charmicon 252 Savanna



E.Milac 440 Oasis
Multiple Design Gel
Foil Glossy Noble Gold
Gel Paint Black Tulip





*E.MiLac 389 Swish of Silk
E.MiLac 258 Brown Granite
Stamping Plate 06 Prints
Nail Polish for Stamping 02 Black
Multiple Design Gel
Foil Glossy Noble Gold
Gemy Gel Clear*



E.MiLac 001 White Lotus
Texture Paint No Wipe 002 White
E.MiLac 183 Aqua Green
E.MiLac 226 Chicago Spirit
Stamping Plate 06 Prints
Empasta Black Tar
Multiple Design Gel
Foil glossy Noble Gold



MERMAID'S SONG

Anything evoking the fantastical underwater realm of mermaids continues to delight fashionistas worldwide. Pearls and glitter, flowing fabrics and fluid silhouettes, chiffon, pearl threads, hair accessories adorned with pearls — this is how we envision the "mermaid" trend of the season. articularly trendy.





- E.MiLac 001 White Lotus
- E.MiLac 296 Capital
- E.MiLac 339 I'm Fire
- E.MiLac 372 Give Love
- E.MiLac 469 Siesta Hour
- E.MiLac 473 Fair Wind
- Stamping Plate 17 Oceanica
- Nail Polish for Stamping 01 White
- Nail Polish for Stamping 02 Black
- Nail Polish for Stamping 03 Blue
- Nail Polish for Stamping 06 Red
- Naildress 129 Infinity
- Charmicon 234 Summer Day
- Charmicon 250 Reef
- Charmicon 251 Maldives
- Charmicon 252 Savanna
- Hilly Gel Paint 002 White
- Empasta Cranberry Red
- Empasta Yellow Corn
- Empasta Castanea
- Multiple Design Gel
- Foil Glassy Silver
- Gemy Gel Clear







1. Apply a decorative coating using E.MiLac 001 White Lotus, 296 Capital, and 339 I'm Fire. LED/CCFL — 2 min, UV — 2 min.



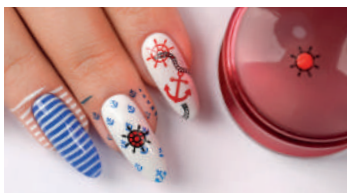
4. Print. Apply E.MiLac Top Gel Tackless. LED/CCFL — 30 sec-1 min, UV — 2 min.



2. On the Stamping Plate 17 Oceanica apply Nail Polishes for Stamping 01 White, 06 Red, 03 Blue transferring the design to the silicone stamp for stamping. Print. Apply E.MiLac Tackless Top Gel. LED/CCFL — 30 sec-1 min, UV — 2 min.



5. Stick the elements from Charmicon 251 Maldives and 252 Savanna. Apply E.MiLac Velvet Top Gel to all nails. LED/CCFL — 30 sec-1 min, UV — 2 min. Remove excess stamping polish using Nail and Gel Polish Remover.



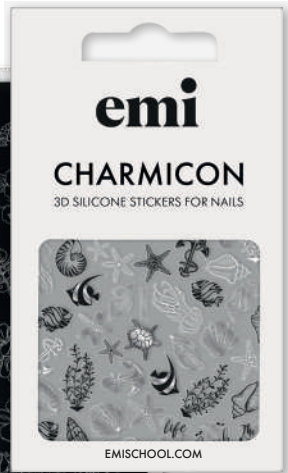
3. To perform reverse stamping of the Steering Wheel element, apply Ultrabond, air dry. Apply stamping polish 02 Black onto the plate. Transfer the element onto the stamper, remove excess, outline the element with stamping polish 06 Red.



6. To add a glossy effect, replicate the design elements using Gemyt Gel Clear. LED/CCFL — 2 min, UV — 2 min.

E.MiLac 001 White Lotus
 E.MiLac 296 Capital
 E.MiLac 339 I'm Fire
 Stamping Plate 17 Oceanica
 Nail Polish for Stamping 01 White
 Nail Polish for Stamping 02 Black
 Nail Polish for Stamping 03 Blue
 Nail Polish for Stamping 06 Red
 Charmicon 251 Maldives
 Charmicon 252 Savanna
 Gemyt Gel Clear



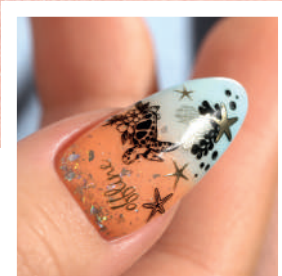


*E.MiLac 001 White Lotus
E.MiLac 473 Fair Wind
Stamping Plate 17 Oceanica
Nail Polish for Stamping 01 White
Naildress 129 Infinity
Charmicon 234 Summer Day
Charmicon 250 Reef
Charmicon 252 Savanna*



SCAN THE QR CODE
AND WATCH THE
MASTER CLASS

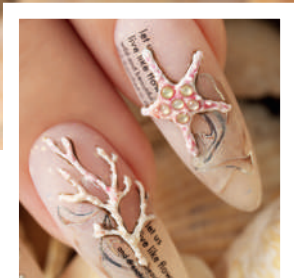




E.MiLac 469 Siesta Hour
 E.MiLac 473 Fair Wind
 Charmicon 251 Maldives
 Charmicon 252 Savanna



E.Milac 372 Give Love
 Charmicon 234 Summer Day
 Naildress 129 Infinity
 Empasta Castanea
 Gemyt Gel Clear
 Hilly Gel Paint 002 White
 Empasta Cranberry Red
 Empasta Yellow Corn





LIQUID METAL

Metallic is no longer just a trend but a fashionable constant. Sparkle is everywhere: rhinestones, sequins, metallic decor, shiny fabrics. Gold, silver, stones... You can have it all at once.

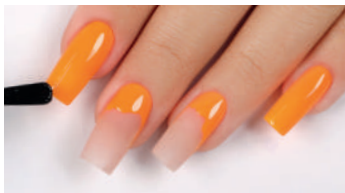




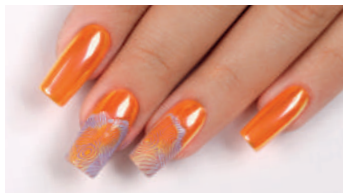
- E.MiLac 381 Shy
- E.MiLac 413 Breakfast at Tiffany's
- E.MiLac 442 Sunkissed
- E.MiLac 447 Radiant
- E.MiLac 474 Siren Song
- E.MiLac 475 Lime Splash
- Nail Polish for Stamping 08 Peach
- Nail Polish for Stamping 09 Light Green
- Nail Polish for Stamping 11 Violet
- Stamping Plate 13 Textures
- Stamping Plate 16 Inspiration
- Stamping Plate 17 Oceanica
- Naildress 129 Infinity
- Charmicon 240 Beauty in Details
- Charmicon 249 Grace
- Charmicon 252 Savanna
- Pigment 204 Mermaid Tail
- E.MiLac Scandium Top Gel
- Gemy Gel Clear
- Multiple Design Gel
- Foil Glossy Silver
- Foil Glossy Gold
- Foil Glossy Noble Gold



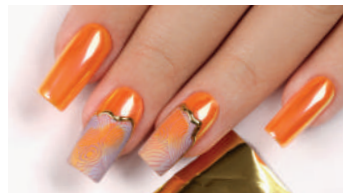




1. Apply a decorative coating using E.MiLac 447 Radiant. LED/CCFL – 2 min, UV – 2 min. Apply E.MiLac Top Gel Tackless. LED/CCFL – 30 sec-1 min, UV – 2 min.



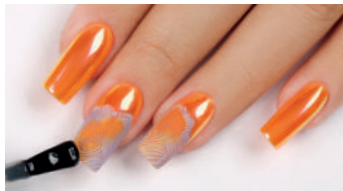
4. On the Stamping Plate 16 Inspiration apply Nail Polishes for Stamping 11 Violet and 08 Peach transferring the design to the silicone stamp for stamping. Print.



7. At the junction of textures, draw the outline using Multiple Design Gel. LED/CCFL – 30 sec-1 min, UV – 2 min. Stamp with glossy foil Noble Gold.



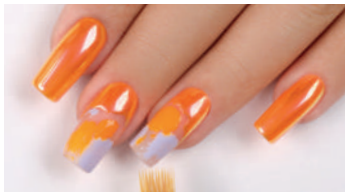
2. Rub in pigment 204 Mermaid Tail and cover it with E.MiLac Top Gel Tackless. LED/CCFL – 30 sec-1 min, UV – 2 min.



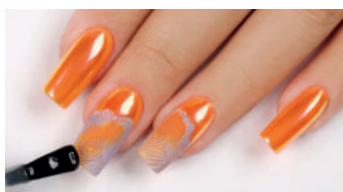
5. Apply E.MiLac Top Gel Tackless. LED/CCFL – 30 sec-1 min, UV – 2 min. Remove excess polish with Nail and Gel Polish Remover.



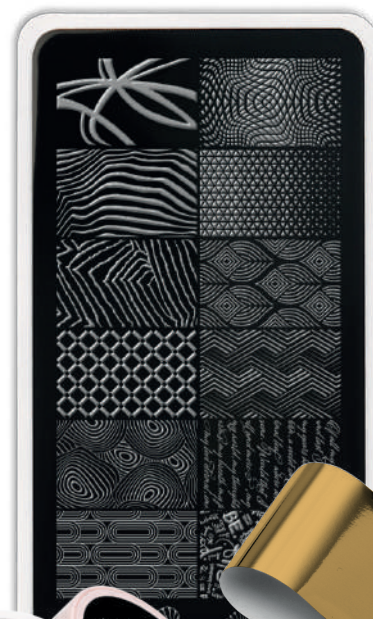
8. Apply E.MiLac Top Gel Tackless over the foil. LED/CCFL – 30 sec-1 min, UV – 2 min.



3. On the middle and ring fingers in the free edge area, add light strokes of E.MiLac 447 Radiant and 474 Siren Song. LED/CCFL – 2 min., UV – 2 min. Blend the colors with a brush for gradient effect.

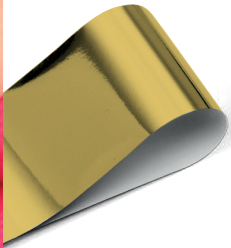


6. Apply E.MiLac Velvet Top Gel on the free edge area of the middle and ring fingers. LED/CCFL – 30 sec-1 min, UV – 2 min.



E.MiLac 447 Radiant
E.MiLac 474 Siren Song
Pigment 204 Mermaid Tail
Stamping Plate 16 Inspiration
Nail Polish for Stamping 08 Peach
Nail Polish for Stamping 11 Violet
Multiple Design Gel
Foil Glossy Noble Gold

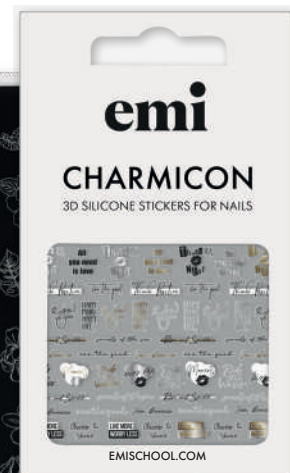
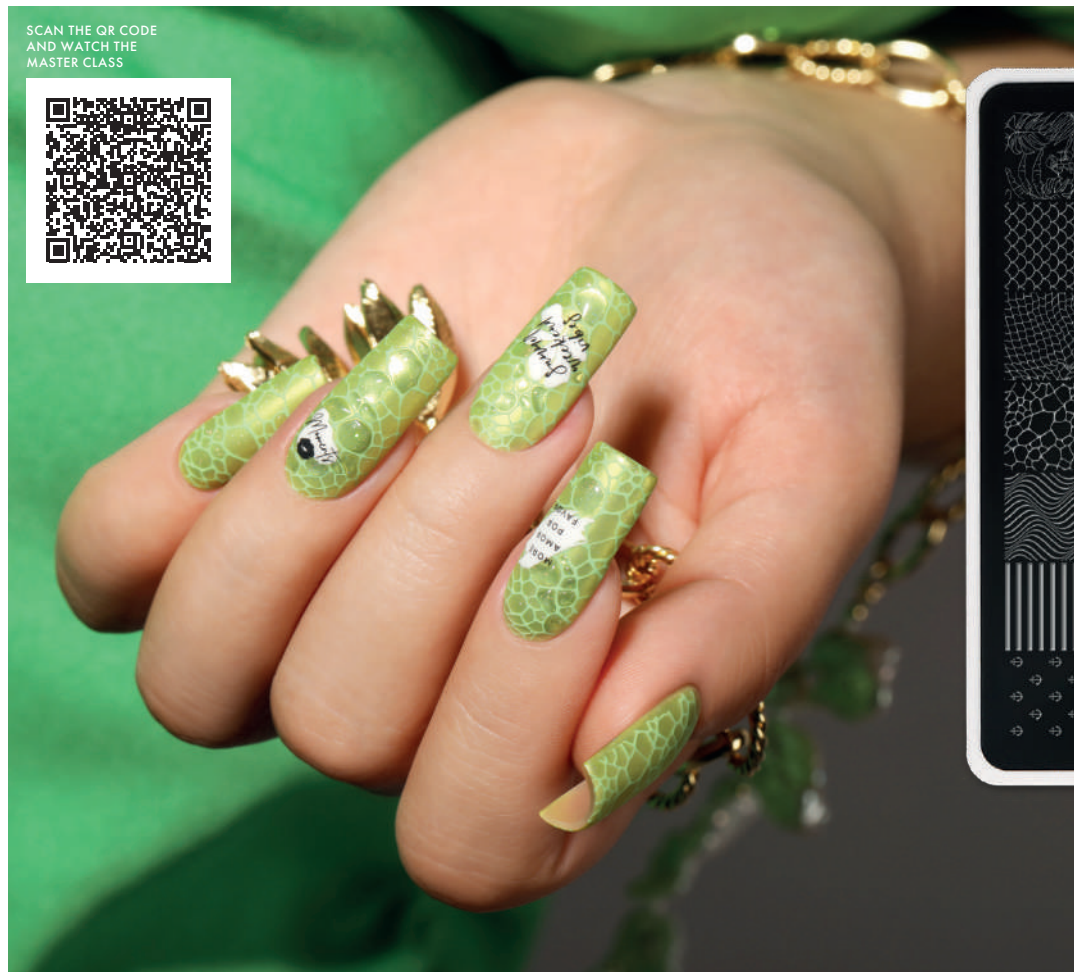




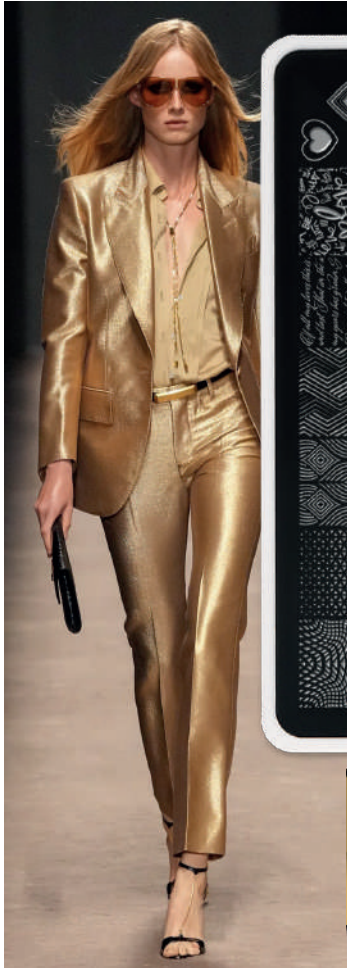
E.MiLac 381 Shy
E.MiLac 413 Breakfast at Tiffany's
Charmicon 240 Beauty in Details
Foil Glossy Noble Gold



SCAN THE QR CODE
AND WATCH THE
MASTER CLASS



*E.MiLac 475 Lime Splash
Pigment 204 Mermaid Tail
Stamping Plate 17 Oceanica
Nail Polish for Stamping 09 Light Green
Charmicon 249 Grace
Charmicon 252 Savanna
Gemyt Gel Clear*



E.MiLac 442 Sunkissed
Stamping Plate 13 Textures
Multiple Design Gel
Foil Glossy Gold

50 SHADES OF WHITE

In spring and summer 2024, attention is drawn to white, which is no longer just a bridal shade. Snow-white suits, accessories, and headwear - in the summer.

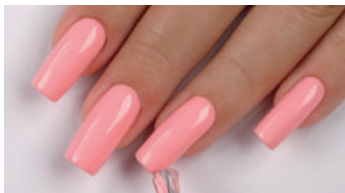




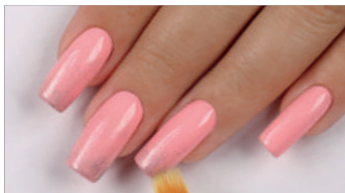
- E.MiLac 001 White Lotus
- E.MiLac 152 Sparkly Beige
- E.MiLac 364 Cotton
- E.MiLac 389 Swish of Silk
- E.MiLac 397 Revival
- E.MiLac 414 Camomile Field
- E.MiLac 468 Pink Horizon
- Nail Polish for Stamping 01 White
- Nail Polish for Stamping 10 Light Blue
- Stamping Plate 12 Flower Garden
- Stamping Plate 16 Inspiration
- Naildress 124 East
- Naildress 125 Loving Hearts
- Naildress 127 Individuality
- Naildress 132 Waltz of the Flowers
- Charmicon 253 Fly
- Charmicon 235 Chance
- Hilly Gel Paint 002 White
- Multiple Design Gel
- Foil Glossy Noble Gold
- Foil Glossy Silver
- Rhinestones 04 White Opal
- Gemy Gel Clear







1. Apply a decorative coating using E.MiLac 468 Pink Horizon. LED/CCFL — 2 min, UV — 2 min. Apply E.MiLac Top Gel Tackless. LED/CCFL — 30 sec-1 min, UV — 2 min.



2. On the index, middle, and ring fingers, lightly blend E.MiLac 397 Revival using a gradient brush.



3. On the Stamping Plate 16 Inspiration apply Nail Polish for Stamping 10 Blue transferring the design to the silicone stamp for stamping. Stamp the design on the index and middle fingers. Apply E.MiLac Slider Top Gel to all nails. LED/CCFL — 30 sec-1 min, UV — 2 min.



4. Cut out the elements of Naildress 125 Loving Hearts, dip them in water, remove them from the paper base, and stick them onto the surface of the index and middle fingers. Apply the elements of Naildress 127 Individuality onto the ring and pinky fingers, then smooth them out. To improve adhesion, cure for 15-30 sec in any lamp.



5. Dissolve the residue of the slider around the perimeter using Ultrabond. Cover all nails with Slider Top Gel. LED/CCFL — 30 sec-1 min, UV — 2 min.



6. On the index and middle fingers, apply E.MiLac Velvet Top Gel. LED/CCFL — 30 sec-1 min, UV — 2 min.

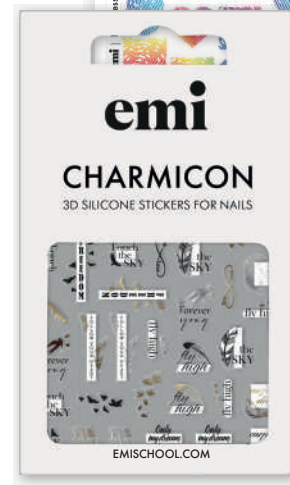


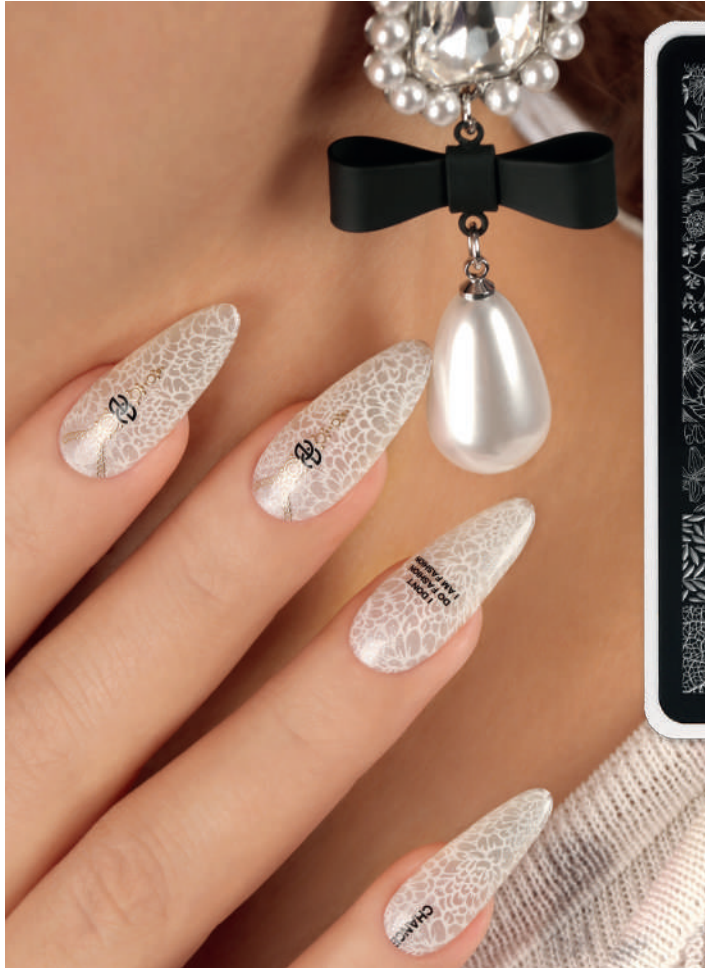
7. On the ring and pinky fingers, after dehydrating with Eurocleanser, adhere Charmicon 253 Fly. Cover with E.MiLac Top Gel Tackless. LED/CCFL — 2 min, UV — 2 min.



8. For a glossy effect, draw hearts on the index and middle fingers using Gemty Gel Clear. LED/CCFL — 2 min, UV — 2 min.

E.MiLac 468 Pink Horizon
E.MiLac 397 Revival
Stamping Plate 16 Inspiration
Nail Polish for Stamping 10 Light Blue
Naildress 125 Loving Hearts
Naildress 127 Individuality
Charmicon 253 Fly
Gemty Gel Clear





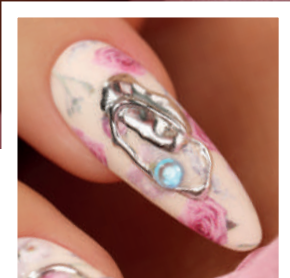
*E.MiLac 389 Swish of Silk
Stamping Plate 12 Flower Garden
Nail Polish 01 Stamping 01 White
Charmicon 235 Chance*





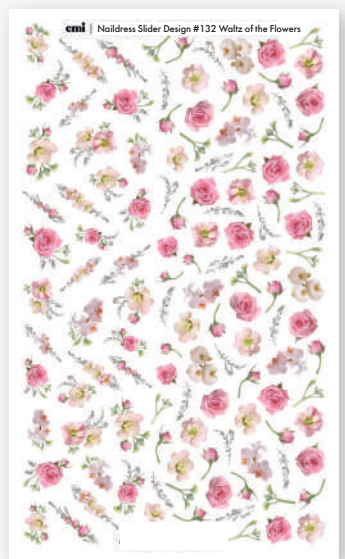
E.MiLac 001 White Lotus
Hilly Gel Paint 002 White
Multiple Design Gel
Foil Glossy Noble Gold





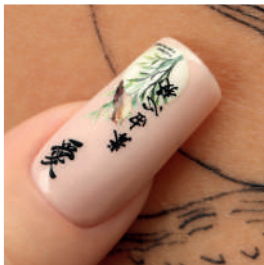
*E.MiLac 364 Cotton
Naildress 132 Waltz of the Flowers
Multiple Design Gel
Rhinestones 04 White Opal
Foil Glossy Silver*

SCAN THE QR CODE
AND WATCH THE
MASTER CLASS





E.MiLac 152 Sparkly Beige
 E.MiLac 414 Camomile Field
 Naildress 124 East



LIKE THE SUN

If there's one standout color for the upcoming season, it's yellow. Sunny shades have made their way into the collections of many designers, serving as a powerful stimulant of positive energy. An ensemble featuring yellow hues will uplift your mood and those around you.





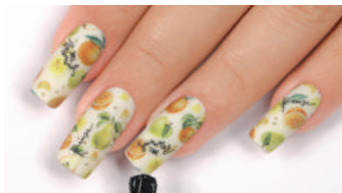
- E.MiLac 001 White Lotus
- E.MiLac 414 Camomile Field
- E.MiLac 468 Pink Horizon
- E.MiLac 472 August Heat
- E.MiLac 474 Siren Song
- E.MiLac 473 Fair Wind
- E.MiLac 475 Lime Splash
- Nail Polish for Stamping 01 White
- Nail Polish for Stamping 02 Black
- Stamping Plate 15 Magic of Nature
- Naildress 134 Vitamin Boost
- Naildress 130 Bright Life
- Charmicon 249 Grace
- Charmicon 252 Savanna
- Charmicon 253 Fly
- Multiple Design Gel
- Foil Glossy Noble Gold
- Gemy Gel Clear







1. Apply a decorative coating using E.MiLac 001 White Lotus. LED/CCFL — 2 min, UV — 2 min. Apply E.MiLac Slider Top Gel. LED/CCFL — 30 sec-1 min, UV — 2 min.



4. Apply Charmicon 249 Elegance. Cover with E.MiLac Velvet Top Gel. LED/CCFL — 2 min, UV — 2 min.



2. Cut out the elements of Naildress 134 Vitamin Boost, dip them in water, remove them from the paper base, and stick them onto the surface of the nails, then smooth them out. To improve adhesion, cure for 15-30 sec in any lamp.



5. For a glossy effect, outline several elements with Gemyt Gel Clear. LED/CCFL — 2 min, UV — 2 min.



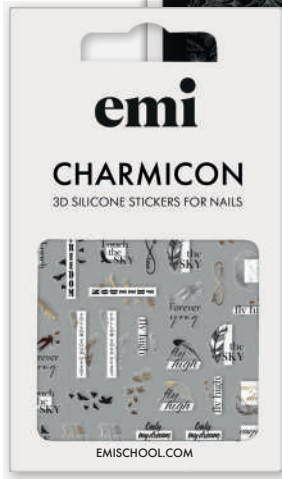
3. Dissolve the residue of the slider around the perimeter using Ultrabond. Cover all nails with Slider Top Gel. LED/CCFL — 30 sec-1 min, UV — 2 min.

E.MiLac 001 White Lotus
Naildress 134 Vitamin Boost
Charmicon 249 Grace
Gemyt Gel Clear



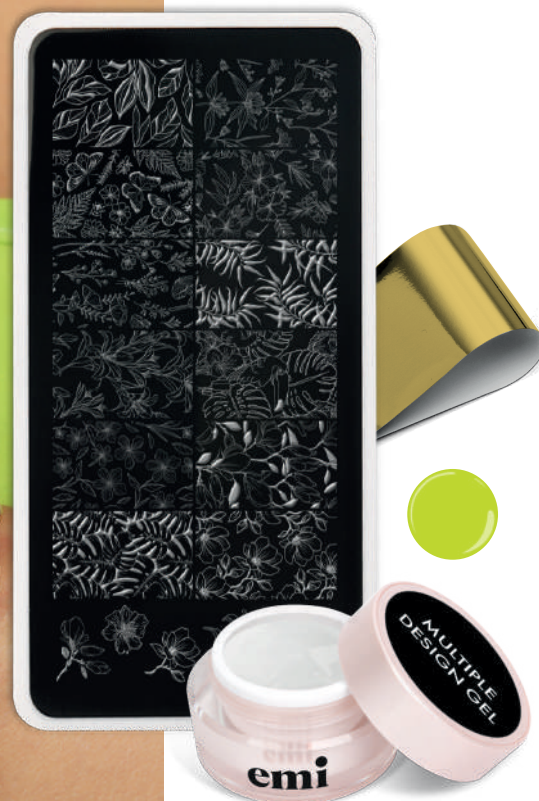
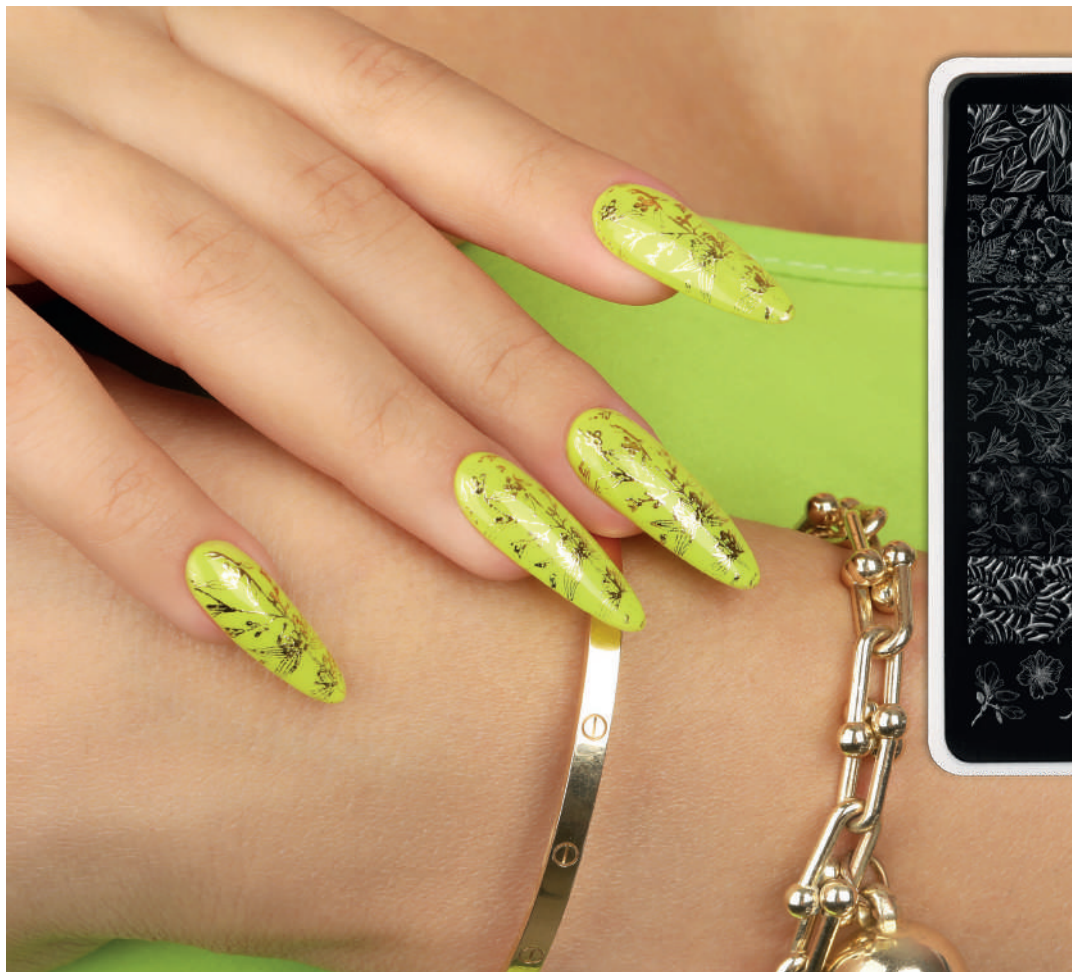


E.Milac 414 Camomile Field
Naildress 130 Bright Life
Gemy Gel Clear

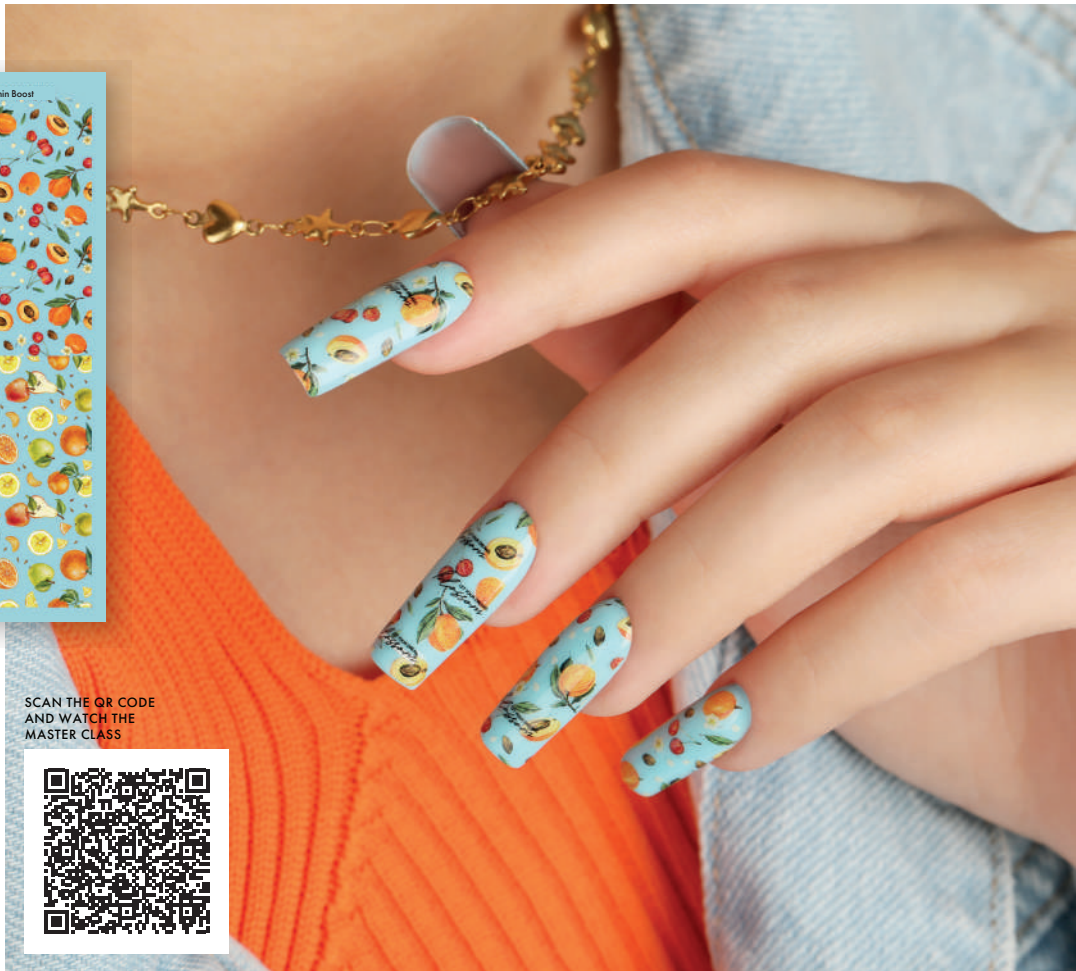
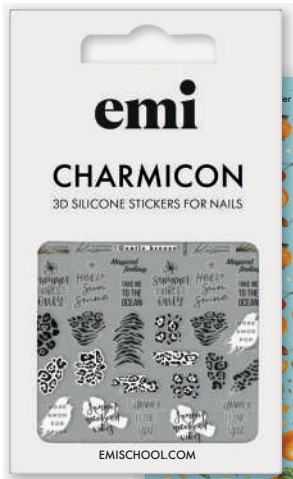


E.MiLac 468 Pink Horizon
 E.MiLac 472 August Heat
 E.MiLac 474 Siren Song
 E.MiLac 475 Lime Splash
 Stamping Plate 15 Magic of Nature
 Nail Polish for Stamping 01 White
 Nail Polish for Stamping 02 Black
 Charmicon 253 Fly





*E.MiLac 475 Lime Splash
Stamping Plate 15 Magic of Nature
Multiple Design Gel
Foil Glossy Noble Gold*



SCAN THE QR CODE
AND WATCH THE
MASTER CLASS



*E.MiLac 473 Fair Wind
Naildress 134 Vitamin Boost
Charmicon 252 Savanna*

Advertising Digest-Catalog

EMI-manicure Spring/Summer 2024 — 72 pages

Advertising Digest-Catalog is a collection of ready-to-use design solutions for EMI-manicure by Ekaterina Miroshnichenko. This edition includes 33 nail art designs of all kinds for the spring/summer 2024 fashion season, which have been made using products designed by EMI brand, 7 step-by-step master classes, 7 video tutorials and 1 video review of the spring/summer 2024 gel polish collection.

The information and photos with nail art designs are the author's intellectual property. This edition includes photos from the publicly available Internet sources. Any distribution, copying, reprinting, and use of the materials and content in whole or in part from the catalog for teaching purposes in order to make profit without the prior written consent of the author are forbidden.

emi

YOUR MANICURE
YOUR STYLE

