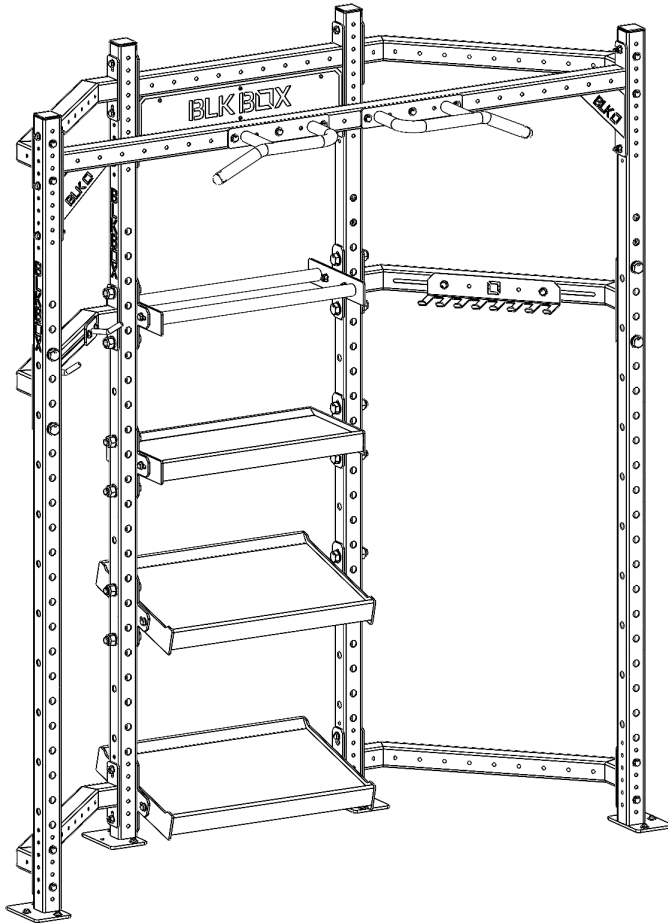


BLK BOX CORNER POD

21-0577



PRODUCT SPECIFICATION

| | | |
|-----------------|---|-------------------------|
| PRODUCT WEIGHT | - | 167kg |
| MAX USER WEIGHT | - | 150kg |
| DIMENSIONS | - | 2151mm x 786mm x 2408mm |

OWNERS MANUAL & QUICK START GUIDE

NOTE : PLEASE READ ALL THE INSTRUCTIONS
CAREFULLY BEFORE ASSEMBLING THIS PRODUCT.

WARNING

SERIOUS OR FATAL INJURIES MAY OCCUR FROM INCORRECTLY ASSEMBLED EQUIPMENT. ALWAYS ENSURE BOLTS ARE TIGHTENED CORRECTLY AND ALL PARTS ARE LEVEL AND PLUMB. TO FURTHER REDUCE RISK OF INJURIES OR DEATH PLEASE USE OUR SUGGESTED TOOLS AND PERSONAL PROTECTIVE EQUIPMENT (PPE). WE SUGGEST THAT A MINIMUM OF THREE PEOPLE ARE INVOLVED IN THE ASSEMBLY OF THIS PRODUCT. EACH PERSON SHOULD BE EQUIPPED WITH SAFETY GLASSES, STEEL TOE CAP BOOTS AND EAR PLUGS.

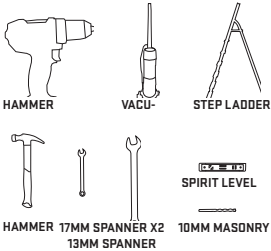
PLEASE BE AWARE OF THIS SYMBOL AS AN INDICATION TO CHECK THAT A PART IS LEVEL OR PLUMB.



THIS SYMBOL IS AN INDICATION OF THE RECOMMENDED TORQUE EACH BOLT SHOULD BE TIGHTENED TO. THIS VALUE WILL BE DEPENDENT ON THE BOLT TYPE. PLEASE HAND TIGHTEN ALL BOLTS UNTIL YOU SEE THIS SYMBOL.

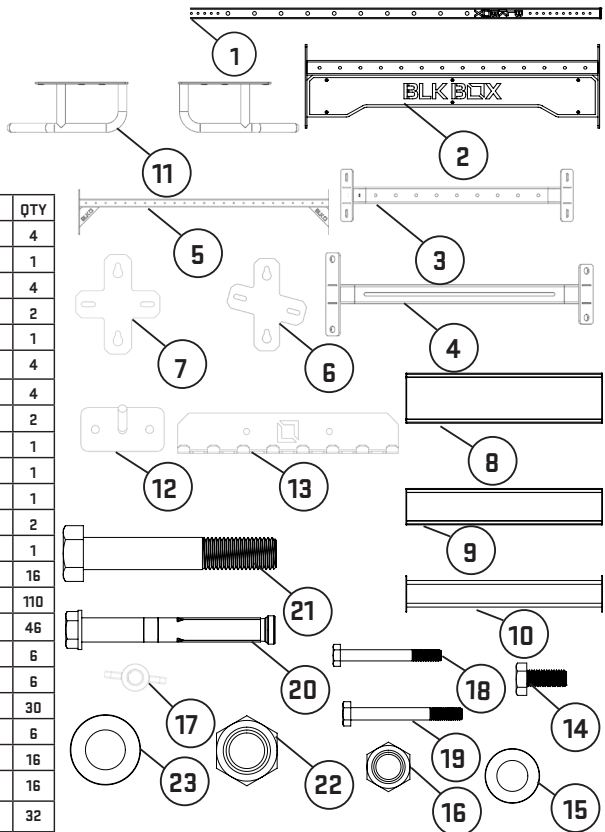


TOOLS REQUIRED



PARTS & ATTACHMENTS

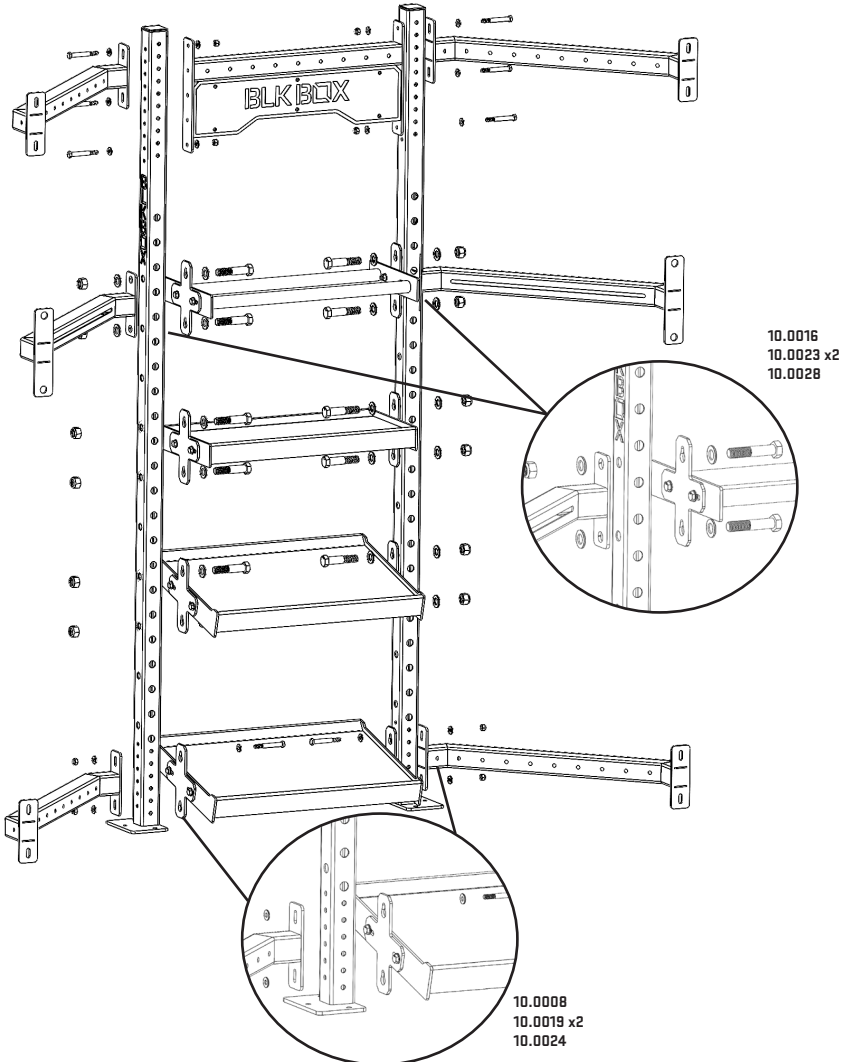
| No. | Name | SKU | QTY |
|-----|---------------------------|---------|-----|
| 1 | GOLIATH UPRIGHT | 21-0036 | 4 |
| 2 | 0.7 BRANDING BOX | 21-0578 | 1 |
| 3 | CORNER POD ANGLED CM | 21-0581 | 4 |
| 4 | SLOTTED ANGLED CM | 21-0582 | 2 |
| 5 | CORNER POD FRONT CM | 21-0583 | 1 |
| 6 | BOLT ON ANGLED SIDE PLATE | 20-0048 | 4 |
| 7 | BOLT ON FLAT SIDE PLATE | 20-0049 | 4 |
| 8 | 0.7 DB SHELF | 21-0580 | 2 |
| 9 | 0.7 FLAT SHELF | 21-0579 | 1 |
| 10 | 0.7 BALL SHELF | 21-0586 | 1 |
| 11 | DNAGO MULTIGRIPS | 21-0151 | 1 |
| 12 | MAT HANGER | 21-0584 | 2 |
| 13 | BAND HOLDER | 20-0069 | 1 |
| 14 | M10X30 BOLT | 10-0001 | 16 |
| 15 | M10 WASHER | 10-0019 | 110 |
| 16 | M10 NYLOCK NUT | 10-0024 | 46 |
| 17 | M10 WING NUT | 10-0018 | 6 |
| 18 | M10X80 BOLT | 10-0006 | 6 |
| 19 | M10X90 BOLT | 10-0008 | 30 |
| 20 | M10 SLEEVE ANCHOR | 10-0031 | 6 |
| 21 | M20X100 BOLT | 10-0016 | 16 |
| 22 | M20 NYLOCK NUT | 10-0028 | 16 |
| 23 | M20 WASHER | 10-0023 | 32 |



ASSEMBLY

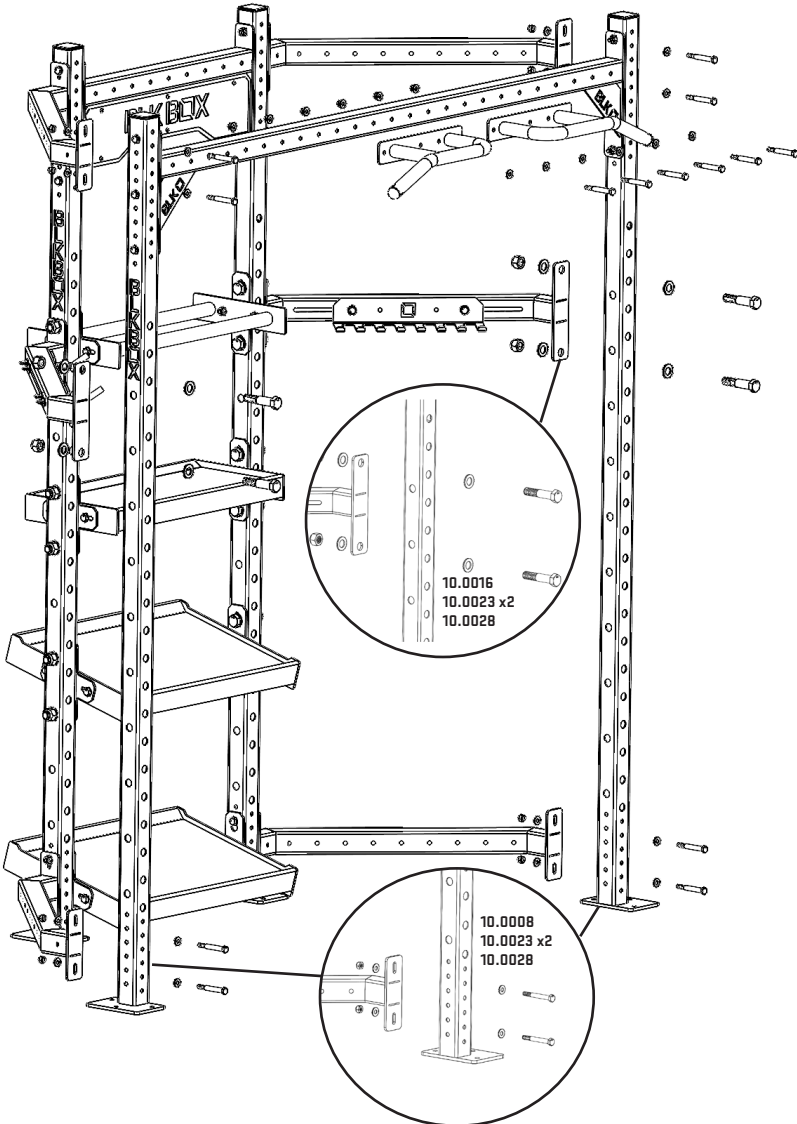
1

BUILD UP EACH SHELF ASSEMBLY USING SIDE PLATES (20-0048 / 20-0049) AND M10X30 BOLTS (10-0001). BUILD UP MIDDLE SECTION AS PICTURED BELOW PLACING 1QTY BRAND BOX (21-0578) AND SHELF ASSEMBLIES BETWEEN 2QTY UPRIGHTS (21-0036) WITH BOLT ASSEMBLIES AS SHOWN. ENSURE LOGO ON UPRIGHTS ARE FACING OUT.



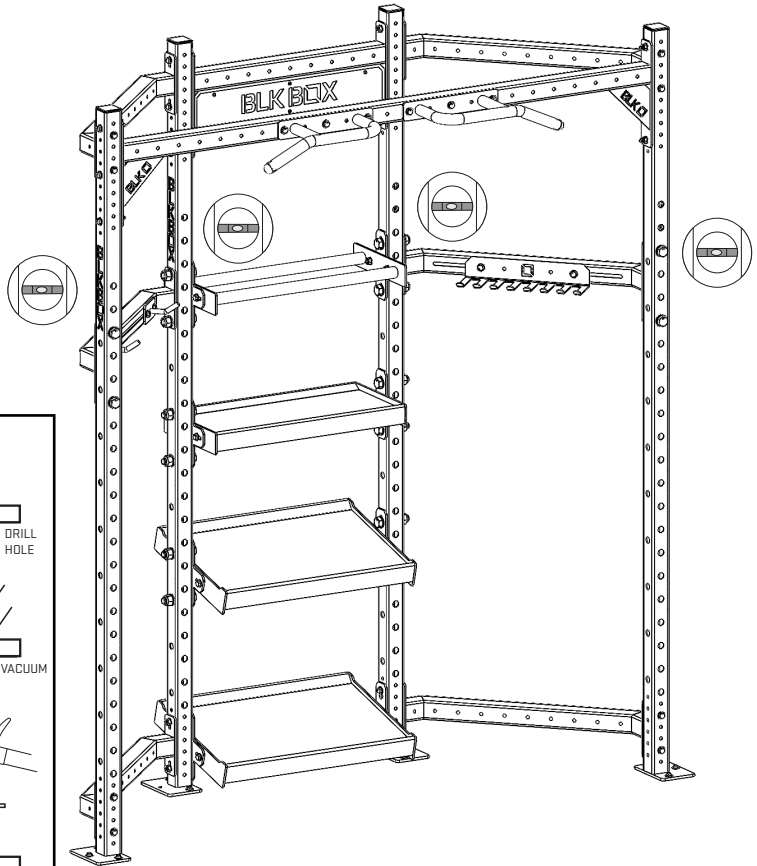
2

BOLT 1QTY MULTIGRIP (21-0151) TO 1QTY FRONT CM (21-0583) AND ATTACH BETWEEN 2QTY UPRIGHTS (21-0036). CONNECT TO EXISTING ASSEMBLY USING BOLT ASSEMBLY AS SHOWN. ENSURE LOGO ON UPRIGHTS ARE FACING OUT AND BOLTS ARE FACING INWARD.

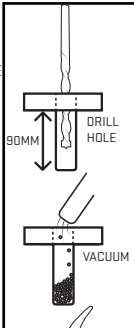


3

ENSURE ALL UPRIGHTS ARE PLUMB AND BOLT TO GROUND USING SLEEVE ANCHOR GUIDE AS SHOWN BELOW. TIGHTEN ALL BOLTS TO 30NM AND ATTACH MAT HANGER (21-0584) AND BAND HOLDER (20-0069) TO SLOTTED CM (21-0582) USING M10X80 BOLTS (10-0006) AND WING NUTS (10-0018).



-DRILL 10MM HOLE THROUGH FLOOR COVERING, 90MM DEEP USING PLATE AS A GUIDE.



-VACUUM OUT THE DUST.

-HAMMERSLEEVE ANCHOR DOWN INTO THE HOLE.



-TIGHTEN SLEEVE ANCHOR TO SPECIFIED TORQUE USING 13MM SPANNER.

