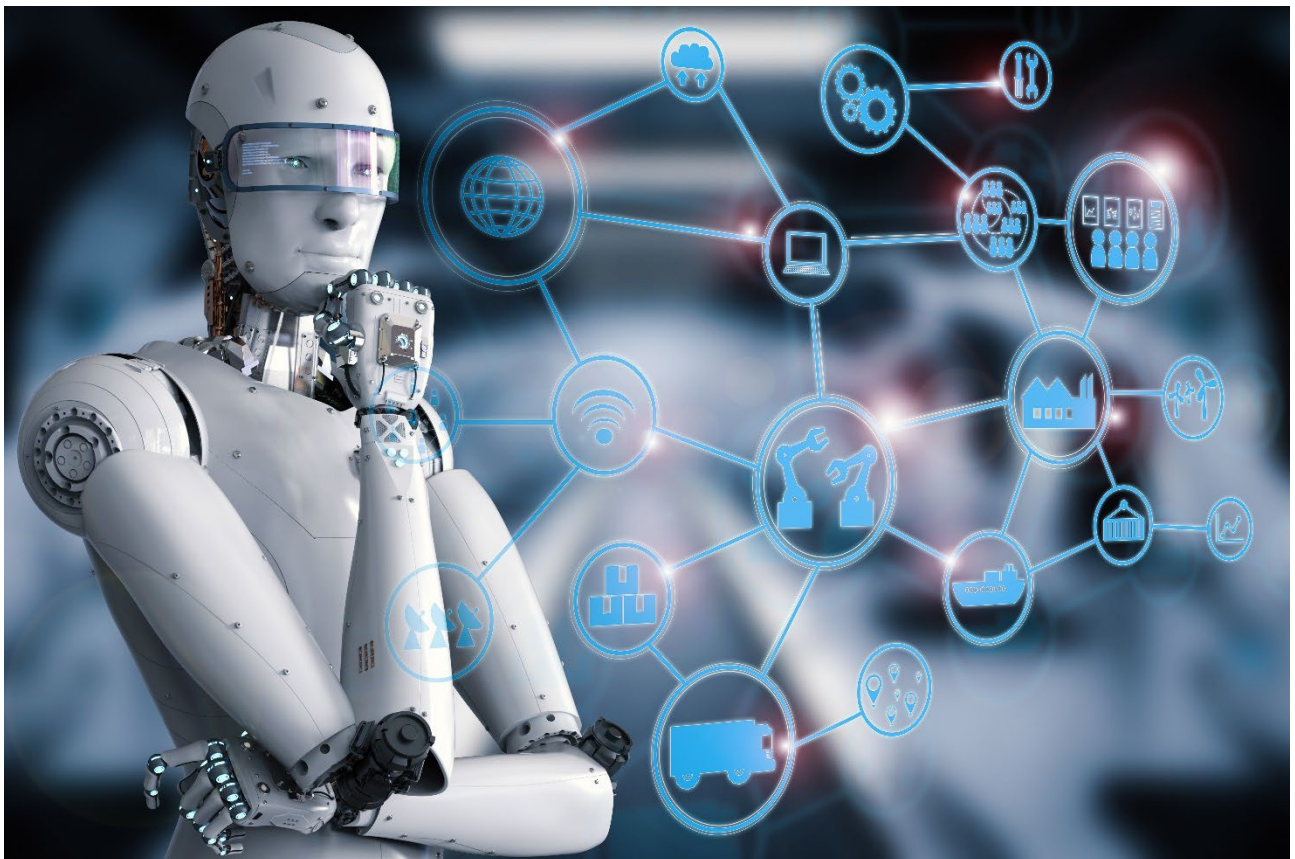


# SYSTIMA

ELETTRONICA S.R.L.

**Components For The Future..**



# POWER DIVISION



Enedo is an international company which designs and manufactures custom and standard DC power systems, AC/DC power supplies for a wide range of demanding industry applications including telecom, industrial, medical, utility, railway, and military. <https://enedopower.com/>



Motien is the specialist in DC/DC Converter starting from 0.25W unregulated to high power density/efficiency/safety approved wide-input range 30W products. <http://www.motien.com.tw/>



CUI is focused on creating ease of access to power supply products and information that help drive an engineer's design. Today we are proud to offer an extensive line of power products to our global customer base that serve the consumer, IoT, industrial, and medical industries.

<https://www.cui.com/>

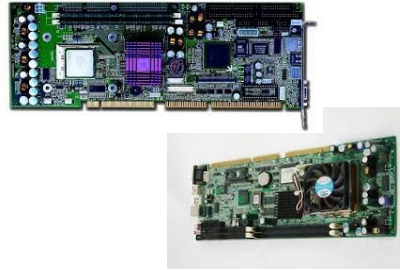


**MELCHER™**  
The Power Partners.

Bel and its groups are primarily engaged in the design, manufacture, and sale of products used in networking, telecommunications, high-speed data transmission, commercial aerospace, military, transportation, and consumer electronics. <https://www.belfuse.com/> - [www.eospower.com](http://www.eospower.com)



# DISTRIBUTION



Portwell is able to offer a wide choice of boards and embedded modules for various industrial applications. The offer includes different formats able to adapt to various application needs: from SBC standards (mini ITX, 3.5", PICO, NANO, NUC and PC104) to more custom formats such as COM Express, SMARC and QSEVEN. <https://www.portwell.com/>

# INDUSTRIAL AUTOMATION

## ADVANTECH

CHANNEL PARTNER



Integrated Soft Computing to Enable Intelligent Machines

## Machine Automation

Advantech offers unique SoftMotion kernel EtherCAT-based solutions for distributed, deterministic motion control with multiple I/O capabilities. Our innovative GigE Vision offload engine uses field programmable gate arrays (FPGA), digital signal processing (DSP) units, and Arm processors as the core of our computing platforms. We also provides versatile application ready platforms and software tools for motion control and machine vision, enabling customers to continuously advance their technologies.



Infrastructure for the IoT

## Intelligent Systems and Platforms

With a diverse range of innovative technologies including cloud computing (industrial and video servers), edge computing (fan-less, slim, portable devices), and high performance embedded systems, Advantech's intelligent systems are equipped with smart, secure, energy-saving features. Our intelligent systems are designed specifically for vertical markets in intelligent transportation, factory automation/machine automation, cloud infrastructure, and intelligent video application sectors.



Naval Ships Type Approval Certificate N. MIL-170119CS

## MARINE GRADE INDUSTRIAL PC

### Marine-grade Server ACP-2320SMG-V.2



2U Rackmount Ind. Chassis with LGA 1150 ATX Server Board, 8GB RAM, 128GB SSD, with Audio and Speakers, Win10 IoT Ent LTSB 2016 -

Loyd's registered RINAMIL certified.

The system's applied in field of navy and cruises.

Oversee the safety of the ship by checking the fire alarm the general emergency, warning signs or warning signals of emergency. The remote monitoring and control of all safety equipment and subsystem makes the ship under maximum security.



### Marine-grade Industrial Panel PC PPC-4211WMH

21.5" Fanless Wide Screen Panel PC with Intel Core i5, 8GB RAM, 64GB SSD and Win10 IoT Ent LTSB 2016 - MIL S 901D Shock Test Compliance.



### Marine-grade Compact Fanless MIC-7700

Compact Fanless System with 6th/7th Gen Intel® Core™ i CPU Socket (LGA 1151)



### Marine-grade Rackmount Chassis ACP-4320

Quiet 4U Rackmount Chassis with Dual Hot-Swap SATA HDD Trays

# LINE CARD



## COMPONENTISTICA MILITARE

## – OBSOLETA – IN ALLOCAZIONE

- RESISTENZE
- CONDENSATORI
- RELÉ
- CAVI
- LED
- PRESE/SPINE/TASTI/PULSANTI
- BATTERIE
- ZOCCOLI
- QUARZI
- CONNETTORI
- DIODI
- PRODOTTI ESD
- PRODOTTI CHIMICI & ADESIVI
- VITERIA
- FUSIBILI
- INDUTTANZE



# SYSMÆ

ELETTRONICA S.R.L.

Strada Torino n. 43 - 10043 Orbassano (TO)

Tel. +39 011 9063140 - 132

[www.sysmaelettronica.it](http://www.sysmaelettronica.it) - [Info@sysmaelettronica.it](mailto:Info@sysmaelettronica.it)

P.IVA 09735310014