

# Schumacher

## Removable Articulating Ring Sight Extender

**Step #1** Position the Bracket for Best Fit (as close to the front edge of your helmet as possible)

**Step #2** Mark and Drill 3 5/32 diameter holes thru your Helmet (remove the lining to prevent damage)

**Step #3** Apply a small amount of Clear Silicon to each of the three feet (this is done for two reasons, 1<sup>st</sup> It helps secure the bracket. 2<sup>nd</sup> to prevent airborne carbon fibers)

**Step #4** Tighten the 3 6/32 Nylon Machine Screws (do not over tighten)

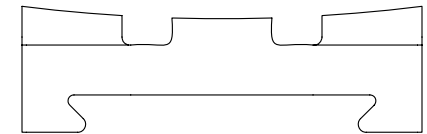
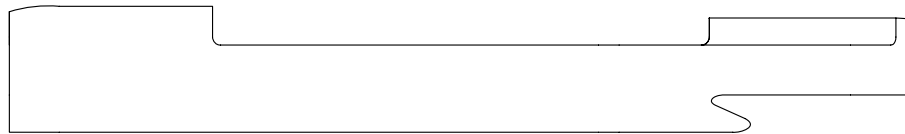
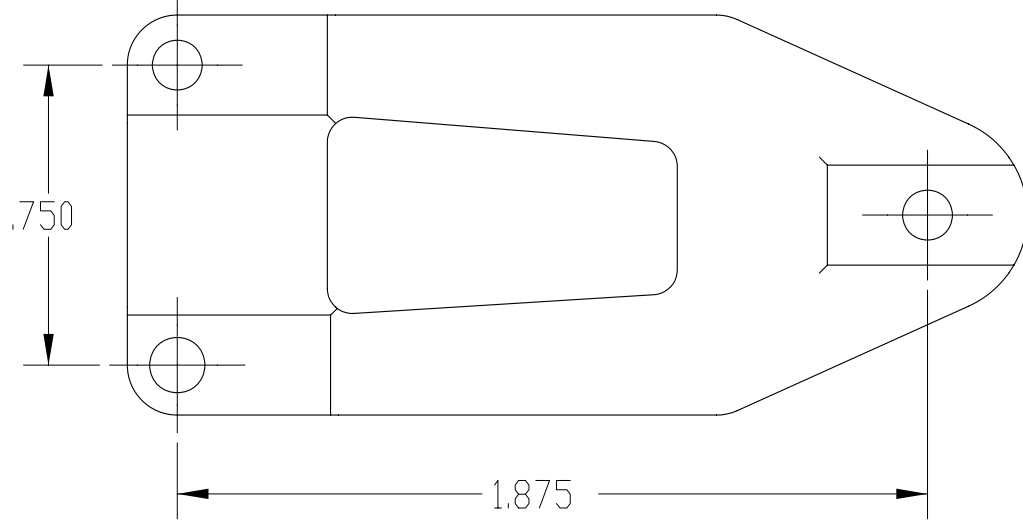
**Step #5** Attach your Ring Sight using the proper size Swivel Clamp (not included)

**Step #6** Cut off the excess ¼” stock from both the Ring Sight and the Articulating Bracket

**Step #7** Attach Camera of choice and sight in.

- Using a long RCA cable attach your Helmet/Cam direct to a Monitor, Zoom in full, Adjust the Sight, as needed viewing your results. (It is best to turn your digital zoom to off) zoom back out and you are ready to use

**Please Note:** The locking dowel pin has two positions, Locked (horizontal) Un-Locked (vertical) from the Un-Locked position you may just twist 90 degrees to the locked position. To return to Un-Locked you must first pull the shaft forward then rotate 90 degrees. Failure to do this will damage the dowel pin.



Removable Articulating Bracket Base