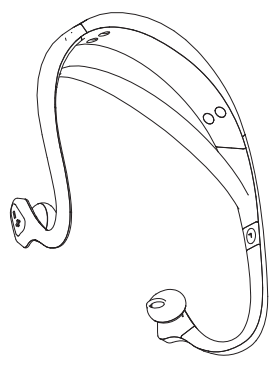




# A.Band

User Guide & Warranty

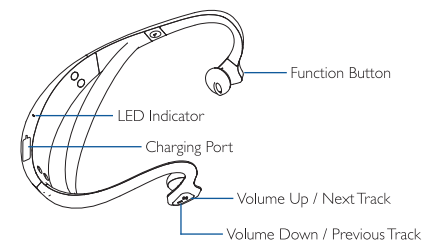
Thank you for choosing Acesori.  
Please follow this user guide to ensure proper use.



## CONTENTS

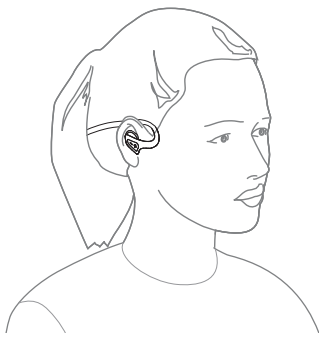
- A.Band Overview ..... 2
- How to Wear ..... 3
- How to Charge ..... 5
- How to Connect ..... 6
- How to Use ..... 7
- Support FAQ ..... 9
- Important Notices ..... 11
- Warranty ..... 12

## A.BAND OVERVIEW

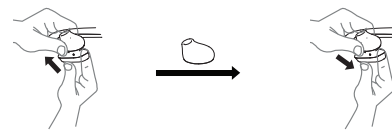


## HOW TO WEAR

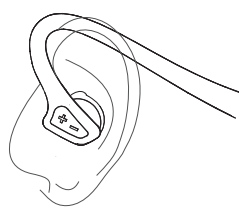
**Wearing The A.Band:** For the best fit, place the headband behind the head while allowing the ear hooks to rest behind the ears. The flexible band, on the rear of the A.Band, will rest against the back of the head.



**Ear Buds Use:** The ear buds can be removed & adjusted by pulling them away from the headband.



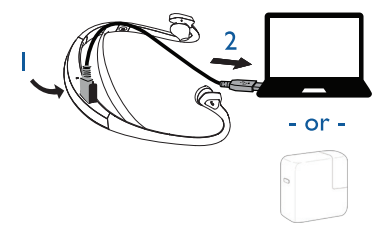
**Ear Hook Placement:** The ear hook should be placed behind the ear.



## HOW TO CHARGE

Remove the charging port cover on the underside of the band to expose the MicroUSB port. (1) Plug one end of the included MicroUSB cable into this port. (2) The other end of this cable can be plugged into the USB port of a computer or a USB power adapter such as the adapter that is often included with a phone or tablet.

Depending on the USB power source, it takes approximately 2 hours to fully charge the A.Band.



Note: For safety reasons, it is recommended to not use the A.Band while it is charging.

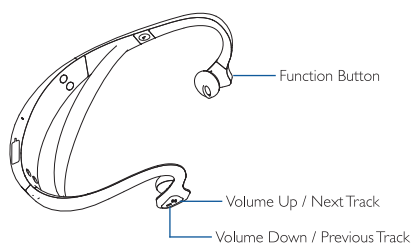
## HOW TO CONNECT

(1) Press and hold, for 8 seconds, the Function button until the LED light rapidly flashes blue & red.

(2) Go to the Bluetooth setting menu on your device and select "ACESORI A.BAND" from the list of available devices. Once paired, simply turn on the A.Band to automatically connect with the device. If a PIN is requested, enter "0000".



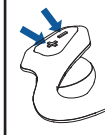
## HOW TO USE



Function	Action
Turn On/Off	Press & hold (3 sec) the Function button until the LED flashes
Play/Pause Music	Tap the Function button
Answer/End Call	Tap the Function button
Reject Call	Double tap the Function button
Redial Last Number	Double tap the Function button when not on a call

Note: Available functions may vary depending on device connected to the A.Band.

Adjust Volume	Press the Volume Up or Volume Down button *
Mute	Press & hold the Volume Up button when on a call
Skip Music Track Forward	Press & hold the Next Track (+) button
Go To Previous Music Track	Press & hold the Previous Track (-) button
Switch Between A.Band & Phone	Press & hold the Volume Down button when on a call
Voice Dial or Voice Assistant	Press & hold the Volume Down button when no audio is playing



Function	Action
End Current Call & Answer Incoming Call	Tap the Function button
Switch Between Held Call & Active Call	Press & hold (2 sec) the Function button
Put Current Call On Hold & Answer Incoming Call	Press & hold (2 sec) the Function button
Reject Incoming Call When On A Call	Double tap the Function button

\* Use caution when raising the volume by pressing the (+) button. Raising the volume too high while the A.Band is in your ears may cause discomfort.

## SUPPORT FAQ

**Q: What is the wireless range of the A.Band?**  
The approximate Bluetooth range is 30 feet but will be dependent on other wireless objects that may be in the area of the A.Band.

**Q: Why is the audio going in-and-out?**  
The A.Band needs to remain within Bluetooth range of the connected device in order for the audio to function properly.

**Q: Why is there no audio coming from the A.Band?**  
Check the Bluetooth settings on your device to confirm the A.Band is connected or adjust the volume level higher.

**Q: Do I need PC or MAC driver for the A.Band?**  
No, the A.Band uses standard Bluetooth profiles that are automatically compatible with Bluetooth equipped Windows PCs & MACs.

### Q: What is IPX5 water resistance?

The A.Band can be exposed to splashes of water such as light falling rain or sweat from exercise. However, it can not be used under water.

### Q: My A.Band is still not functioning properly, what is the next step?

Fully charge the A.Band for at least 2 hours. Next, unpair/forget/delete the A.Band from all previously connected devices by going to the Bluetooth settings screen on each device. Then pair the A.Band with one device to test the connection and audio. If this does not solve the issue, please contact Acesori Support.

### Q: How do I clean & care for the A.Band?

Store the A.Band with the power off & avoid temperatures above 140°F / below 20°F. Do not wash the A.Band but rather spot clean parts with a slightly damp cloth.

## IMPORTANT NOTICES

- Fully charge the A.Band before its first use.
- It is normal for the A.Band to be warm during the charging process.
- Do not clean the A.Band using chemical cleaners.
- Do not puncture, disassemble, crush or place underwater.
- Do not operate the A.Band outside the temperature range outlined in this guide.
- Do not input non-compliant voltage into the A.Band charging port.
- To extend the life of the battery, fully charge the A.Band once every 4 months.
- Follow local and state regulations for recycling this device; and other laws governing its use.

## WARRANTY

Acesori is pleased to cover your Acesori A.Band for a period of one (1) year from the original date of purchase. All hardware parts, including the MicroUSB cable, are covered under this warranty from any manufacturer defects that may arise from its intended use as outlined in this guide.

Contact our support team any time within that year for any technical assistance with your A.Band.

Email: [support@acesori.com](mailto:support@acesori.com) Website: [www.acesori.com](http://www.acesori.com)

See website for full warranty conditions.



@Acesori



/AcesoriProducts

[www.ACESORI.com](http://www.ACESORI.com)

© 2016 Acesori. All rights reserved. Acesori is a trademark of Acesori. All other trademarks are the property of their respective owners.