

ShieldingTM INC

International

Manufacturers of
Quality X-Ray
Protective Products
Since 1958



Product Catalog

About Us

Shielding International™ is a Women-Owned Small Business located in the heart of scenic Central Oregon. We have been a leader in x-ray protection for over 60 years, providing garments that are flexible, comfortable and extremely durable.

Since 1958, Shielding has proudly served the x-ray protective needs for a variety of users across the globe. Protective uses include: medical, dental, veterinary, nuclear and security inspection industries. All apparel and lead vinyl production are done on site; which is unique to the industry. By controlling the process from the formulation of the core x-ray protective material to the finished product; we can assure quality products.

Shielding International™ is ISO 9001:2015 certified and registered by the FDA. In addition, we proudly hold the CE marking under EU2016/425. We are committed to meeting customer and regulatory requirements on all our products. Customer satisfaction is further enhanced through continual improvement of its x-ray protective products and the quality management system.

Our team of employees work very hard and know that quality comes first. Many of the employees you see below have been with us for 20+ years and have dedicated their working lives to **Shielding International™**. From all of us at Shielding we would like to say thank you.

Thank you for supporting our small family business. We attribute our success to our team of dealers, their loyal customers and our great employees.



Shielding™
International



Table of Contents

Service Information	pg. 1
Frontal Aprons	pg. 2
Vest Skirts	pg. 8
Wrap Around Aprons	pg. 11
Lighter Options	pg. 14
Demi & Half Aprons	pg. 16
Dental Aprons	pg. 17
Pediatric Aprons	pg. 19
Collars	pg. 21
Accessories	pg. 23
Gloves	pg. 26
Eyewear	pg. 29
Sandbags/Sand Socks	pg. 33
Apron Racks	pg. 35
Shields/Curtains	pg. 37
Blockers/Lead Vinyl Sheets	pg. 40
Mobile Barrier/Screens Lead Glass	pg. 42
Fit & Sizing	pg. 43
Custom Options	pg. 44
Ordering Information	pg. 48

What's New!

APRON MODELS

SM and SMHB
P-SM
VSB

COLLARS

641 CF-BC
651BS

ACCESSORIES

PREGNANCY PANEL
MPX-XL and MPS-XXL

RACKS

814
815

FABRICS

New colors and patterns

TABLE DRAPES

SANDBAGS/
SAND SOCKS

ShieldingTM
International **INC**

Service Information

INDUSTRIES SERVED

Medical | Dental | Veterinary | Baggage Inspection | Security inspection

CUSTOMER SERVICE:

- **Lead Time:** 12-15 business days
Large orders of 50 items or more require more time
- **In Stock for Immediate Shipment:** Ship within 24-48 hours depending on quantity
- **Warranty:** 2-year warranty on our core material and workmanship
- **Dealer Network:** Shielding International™ works through an approved dealer network and has dealers across the United States as well as internationally. Dealers are trained to assist in sizing and selection.
- **On-Site Production:** From design to finished product, quality and safety are the main focus. On-site production allows us to customize aprons to your exact specifications.

RUSH SERVICE

- 3 Day - add 25% on total cost of order
 - 5 Day - add 20% on total cost of order
- Minimum \$20.00 rush fee

* CE marking * 61331-1 2014

*ISO 9001-2015

Protection Options

Refer to product pages for protections available per model

Core Material	Voltage Range	Protection - Pb Eq	Warranty		Benefits
RL - Regular Lead	50kVp to 150kVp	0.25mm, 0.3mm, 0.35mm, 0.5mm	2 year	 	100% recyclable Most economical
TL - TL Lite Ply**	50kVp to 110kVp	0.25mm, 0.35mm, 0.5mm	2 year		100% recyclable 15% lighter
Shielding materials tested to new BBG method for standard IEC61331-1 (2014)					
LF - Strata 300**	50kVp to 110kVp	0.25mm, 0.35mm, 0.5mm	1 year		Environmentally friendly 15% lighter than RL
NL - Non Lead	100kV	0.25mm, 0.35mm, 0.5mm	1 year		Environmentally friendly 20-25% lighter than RL
**Not intended for use where exposure exceeds 125kV					

QUALITY

Shielding International™ is in a unique position to assist in the formulation, production and inspection of the core x-ray protective material. Your safety is important and this hands-on approach allows us to stand behind our core material with a 2-year warranty. All core material is tested to IEC 61331-1: 2014 standards.

Frontal Aprons

Customize your apron with designer fabrics, embroidery, logos, pockets, etc.
See pages 46-51 for options.

Sample Part # ST-L-R-RL
(Model - Size - Length - Lead Type)

Choose Your Size

Size	Fits Chest	Width	TQW Wrap
(XS) - X-Small	30"-34" 76.2cm-86.4cm	18" 45.7cm	4" 10.2cm
(S) - Small	34"-38" 86.4cm-96.5cm	20" 50.8cm	4" 10.2cm
(M) - Med	38"-42" 96.5cm-106.7cm	22" 55.9cm	5" 12.7cm
(L) - Large	42"-46" 106.7cm-116.8cm	24" 61cm	5" 12.7cm
(XL) - X-Large	47"-52" 119.4cm-132.1cm	27" 68.6cm	6" 15.2cm
(XXL) - XX-Large	53"-58" 134.6cm-147.3cm	30" 76.2cm	6" 15.2cm

Choose Your Length

Length	Height
(XS) - X-Short 30"/76.2cm	4'11"-5'3" 149.9cm-160cm
(S) - Short 32"/81.3cm	5'3"-5'5" 160cm-165.1cm
(R) - Regular 34"/86.4cm	5'5"-5'8" 165.1cm-172.7cm
(T) - Tall 36"/91.4cm	5'8"-5'11" 172.7cm-180.3cm
(XT) - X-Tall 38"/96.5cm	5'11"-6'2" 180.3cm-188cm

Protection Options

RL-Regular Lead	TL - Lite Ply	NL - Non Lead	LF - Strata 300
RL - 0.5mm Pb Eq RLL - 0.35mm Pb Eq	TL - 0.5mm Pb Eq TLL - 0.35mm Pb Eq	NL - 0.5mm Pb Eq NLL - 0.35mm Pb Eq	LF - 0.5mm Pb Eq LFLL - 0.35mm Pb Eq
Custom Protection Options Available			
RL - Custom 0.3mm Pb Eq 0.25mm Pb Eq	TL - Custom 0.25mm Pb Eq	NL - Custom 0.25mm Pb Eq	**NA**

TL Lite Ply and LF Strata 300 not intended for use where exposure exceeds 125kV

***Non Lead not available in EU or UK

ECONOMY COAT APRON (MODEL E)

Economy Coat Apron is the same style as our Model S.

- 1" tie strap closure
- Available in our selection of solid color nylon, vinyl and our wide selection of diamond ripstop fabrics.
- Optional protection or customization not available.
- Available for immediate shipment in Royal Blue Nylon (24" width x 32, 34, 36 & 38" lengths).
- Quantities subject to stock on hand.



FAST WRAP APRON (MODEL FW)

Fast Wrap Apron offers both comfort and ease of wearing with single hook and loop fastener that wraps around the front. Adjustable back shoulder strap keeps apron snug. Shoulder pads included.



THE FLEX BACK APRON (MODEL FB)

Features elastic back panels for added comfort and support with hook and loop fastening flaps that wrap around the waist for an adjustable fit. Shoulder pads included.



STANDARD COAT APRON (MODEL S)

Standard Coat Apron features open back with choice of durable 1" tie straps, 2" quick release buckle , or hook and loop fastener that crosses the back and secures in front for a snug and comfortable fit. Shoulder pads included.

Model	Closure
ST	Ties
SQR	Quick Release Buckle
SV	Hook and Loop

Also available in Pediatric sizes (model P-ST). Page 19.

Available for immediate shipment in Royal Blue Nylon (24"width x 32, 34, 36, 38" lengths). Quantities subject to stock on hand.

Model SQR



Model SV



Model TQW



THREE QUARTER WRAP APRON (MODEL TQW)

Designed for fluoro.

Additional side wrap protection

- X-Small & Small: 4" each side
- Medium & Large: 5" each side
- X-Large & XX-Large: 6" each side

Adjustable shoulder pads and elastic back panels cross in back and secure at waist with hook and loop closure to allow for a more comfortable fit and help alleviate weight on shoulders. Shoulder pads included.

THE VERSA-ADJUSTABLE (MODEL VA)

Features hook and loop closure at the waist which aids in relieving weight off the shoulders. Its comfortable fit is attained by varying the position of the flaps. Shoulder pads included.

THE VERSA-ADJUSTABLE W/QR BUCKLE (MODEL VAQR)

Features convenient 2" QR Buckle closure at the waist, which aids in relieving weight off the shoulders.



ADJUST-A-FIT APRON (MODEL AF)

Features two hook and loop fastening flaps at the waist which aids in relieving weight off the shoulders and includes adjustable padded shoulders. Its comfortable fit is attained by varying the position of the flaps. Shoulder pads included. Pictured with Optional Patch Pocket with embroidery.

ADJUST-A-FIT W/QR BUCKLE (MODEL AFQR)

Available with optional 2" QR Buckle Closure.



UROLOGY URO-APRON (MODEL U)

Designed for protection while seated, this Urology apron features a unique tri-flap design for added comfort. Two hook and loop fastening flaps at the waist aid in relieving weight off the shoulder. Shoulder pads included.



BR BACK RELIEF APRON (MODEL BR)

Back Relief Apron transfers the weight from the shoulders to the hips with the aid of a 6" wide elastic belt. Adjustable back shoulder strap keeps apron snug. Shoulder pads included.

- BR Belt provides extra back support.
- BR Belt may be ordered separately.

BR Belt - indicate belt size when ordering

Size	Measurements
BR-S	28"-38" / 71.1-96.5cm
BR-M	36"-48" / 91.4-121.9cm
BR-L	44"-58" / 111.7-147.3cm



BR BACK RELIEF APRON w/BRX BELT OPTION (MODEL BRX)

Model BRX features BRX brace belt with unique pulley system designed to help with lower back stress or strain by providing support and comfort. BRX Belt system and cords are backed by a lifetime warranty. BRX belt can be adjusted for various body positions and is comfortable when worn outside our x-ray apparel.

- BRX Belt provides extra back support.
- BRX Belt may be ordered separately.
- BRX Belt may be used with other apron styles.

BRX Belt - Indicate belt size when ordering.

Size	Measurements
BRX-S	25"-30" / 63.5-76.2cm
BRX-M	30"-35" / 76.2-88.9cm
BRX-L	35"-40" / 89-101.5cm
BRX-XL	40"-45" / 101.5-114.3cm
BRX-XXL	45"-50" / 114.3-127cm
BRX-XXXL	50"-55" / 127-139.7cm



SURGICAL DROP OFF APRON (MODEL SDO)

Surgical Drop Off Apron features front hook and loop fastening flaps with back criss-cross straps that assure easy removal from both over or under the surgical gown without disturbing the sterile field. Shoulder pads included.



SURGICAL DROP AWAY APRON (MODEL SDA)

Offers top of the shoulder hook and loop fastening flaps for an adjustable fit. Features elastic back panels for added comfort and support. For quick removal apron releases at shoulder and waist. Shoulder pads included. Pictured with Optional Slit Pocket.



Vest Skirts

Customize your apron with designer fabrics, embroidery, logos, pockets, etc.

See pages 46-51 for options.

Sample Part # AFVS-LF-RL (Model - Size- Lead Type)

Choose Your Size

Length

Female Size	Fits Chest	Waist	Hips		Vest	Skirt
(SF) - Small	34"-35" 86.4cm-88.9cm	26"-30" 66.04cm-76.2cm	38" 96.5cm		17" 43.2cm	20" 50.8cm
(SM) - Medium	36"-37" 91.4cm-94cm	30"-34" 76.2cm-86.4cm	40" 101.6cm		18" 45.7cm	20" 50.8cm
(LF) - Large	38" - 40" 96.5cm-101.6cm	34"-38" 86.4cm-96.5cm	43" 109.2cm		19" 48.3cm	21" 53.3cm
(XLF) - X-Large	41"-44" 104.1cm-111.8cm	38"-42" 96.5cm-106.7cm	47" 119.4cm		20" 50.8cm	21" 53.3cm
(XXLF) - XX-Large	45"-48" 114.3cm-121.9cm	42"-46" 106.7cm-116.8cm	51" 129.5cm		21" 53.3cm	22" 55.9cm

Male Size	Fits Chest	Waist	Hips		Vest	Skirt
(SM) - Small	35"-38" 88.9cm-96.5cm	28"-32" 71.1cm-81.3cm	40" 101.6cm		18" 45.7cm	21" 53.3cm
(MM) - Medium	39"-42" 99.1cm-106.7cm	32"-36" 81.3cm-91.4cm	44" 111.8cm		19" 48.3cm	22" 55.9cm
(LM) - Large	43"-46" 109.2cm-116.8cm	36"-40" 91.4cm-101.6cm	48" 129.5cm		20" 50.8cm	22" 55.9cm
(XLM) - X-Large	47"-50" 119.4cm-127cm	40"-44" 101.6cm-111.8cm	52" 132.1cm		21" 53.3cm	22" 55.9cm
(XXLM) - XX-Large	51"-54" 129.5cm-137.2cm	44"-48" 111.8cm-121.9cm	56" 142.2cm		22" 55.9cm	23" 58.4cm

Protection Options

		Front	Front Overlap	Back
(RL) - Regular Lead	Vest	0.5mm Pb Eq	1.0mm Pb Eq	0.3mm Pb Eq
	Skirt	0.3mm Pb Eq	0.6mm Pb Eq	0.3mm Pb Eq
(TL) - TL Lite Ply (NL) - Non Lead (LF) - Strata 300	Vest	0.5mm Pb Eq	1.0mm Pb Eq	0.25mm Pb Eq
	Skirt	0.25mm Pb Eq	0.5mm Pb Eq	0.25mm Pb Eq
(RLL) - Regular Lead (TLL) - TL Lite Ply (NLL) - Non Lead (LFL) - Strata 300	Vest	0.35mm Pb Eq	0.7mm Pb Eq	0.25mm Pb Eq
	Skirt	0.25mm Pb Eq	0.5mm Pb Eq	0.25mm Pb Eq

Custom Protection Options Available

TL Lite Ply and LF Strata 300 not intended for use where exposure exceeds 125kV

***Non Lead not available in EU or UK

VEST SKIRT COMBO (MODEL VS)

Proud holders of the original design and patent. Our standard vest features all around protection with overlap in the front, shoulder pads and three panel hook and loop closure.

Model

- VS** Vest Skirt Combo
- VO** Vest Only
- SO** Skirt Only



VEST SKIRT WITH BELT – MODEL VSB

Our standard vest all around protection with overlap in the front, shoulder pads and three panel hook and loop closure. The vest has an added feature with a sewn in belt with a 2" strap the comes around and buckles in front. This feature will support lower back fatigue and keep the weight off of the shoulders.

Model

- VSB** Vest Skirt Combo
- VBO** Vest Only
- SO** Skirt Only

CLOSE UP OF SEWN IN BELT



ADJUST-A-FIT VEST SKIRT (MODEL AFVS)

Adjust-A-Fit Vest features wrap around protection and adjustable padded shoulders from the arm hole to the top of the shoulder enabling the user to adjust the vest to a more secure and comfortable fit. Because of the versatility in fit it accommodates a wide range of wearers.

Model

- AFVS** Vest Skirt Combo
- AFVO** Vest Only
- SO** Skirt Only



QR VEST SKIRT COMBO (MODEL QRVS)

Quick Release Buckle Vest Skirt features quick releasing buckles and no hook and loop. The vest has three quick release buckles for closure; a 2" buckle at the chest and one at the waist along with a 1" buckle at the shoulder. The skirt closes with two quick release buckles; a 1" buckle on the inside panel at waist and a 2" buckle on the outside at the waist. Shoulder pads included.

Model

- QRVS** Vest Skirt Combo
- QRVO** Vest Only
- QRSO** Skirt Only

SKIRT ONLY (MODEL SO)

Skirt wraps around and overlaps in the front, offering extra protection. Fits securely on hips with extra wide hook and loop fastener and 2" quick release buckle for added support. Comes standard with large side pocket and hanging loops. Can be customized with a non-slip skirt backing.

Model

- SO** Skirt Only
- QRSO** Skirt Only - with QR Buckle



Wrap Around Aprons

Customize your apron with designer fabrics, embroidery, logos, pockets, etc.

See pages 46-51 for options.

Sample Part # WABR-LM-T-TL (Model - Size - Length - Lead Type)

Choose Your Size

Female Size	Fits Chest	Waist	Hips
(SF) - Small	34"-35" 86.4cm-88.9cm	26"-30" 66.04cm-76.2cm	38" 96.5cm
(SM) - Medium	36"-37" 91.4cm-94cm	30"-34" 76.2cm-86.4cm	40" 101.6cm
(LF) - Large	38" - 40" 96.5cm-101.6cm	34"-38" 86.4cm-96.5cm	43" 109.2cm
(XLF) - X-Large	41"-44" 104.1cm-111.8cm	38"-42" 96.5cm-106.7cm	47" 119.4cm
(XXLF) - XX-Large	45"-48" 114.3cm-121.9cm	42"-46" 106.7cm-116.8cm	51" 129.5cm

Choose Your Length

Length	Height
(XS) - X-Short 30"/76.2cm	4'11"-5'3" 149.9cm-160cm
(S) - Short 32"/81.3cm	5'3"-5'5" 160cm-165.1cm
(R) - Regular 34"/86.4cm	5'5"-5'8" 165.1cm-172.7cm
(T) - Tall 36"/91.4cm	5'8"-5'11" 172.7cm-180.3cm
(XT) - X-Tall 38"/96.5cm	5'11"-6'2" 180.3cm-188cm

Male Size	Fits Chest	Waist	Hips
(SM) - Small	35"-38" 88.9cm-96.5cm	28"-32" 71.1cm-81.3cm	40" 101.6cm
(MM) - Medium	39"-42" 99.1cm-106.7cm	32"-36" 81.3cm-91.4cm	44" 111.8cm
(LM) - Large	43"-46" 109.2cm-116.8cm	36"-40" 91.4cm-101.6cm	48" 129.5cm
(XM) - X-Large	47"-50" 119.4cm-127cm	40"-44" 101.6cm-111.8cm	52" 132.1cm
(XXLM) - XX-Large	51"-54" 129.5cm-137.2cm	44"-48" 111.8cm-121.9cm	56" 142.2cm

Protection Options

	Front	Front Overlap	Back
(RL) - Regular Lead	0.5mm Pb Eq	1.0mm Pb Eq	0.3mm Pb Eq
(TL) - TL Lite Ply (NL) - Non Lead (LF) - Strata 300	0.5mm Pb Eq	1.0mm Pb Eq	0.25mm Pb Eq
(RLL) - Regular Lead (TLL) - TL Lite Ply (NLL) - Non Lead (LFL) - Strata 300	0.35mm Pb Eq	0.7mm Pb Eq	0.25mm Pb Eq

Custom Protection Options Available

TL Lite Ply and LF Strata 300 not intended for use where exposure exceeds 125kV

***Non Lead not available in EU or UK

WRAP AROUND BACK RELIEF APRON (MODEL WABR)(MODEL WABRX)

Wrap-Around Back Relief Apron is designed for front and back protection. The Belt option helps transfer the weight from the shoulders to the hips. Shoulder pads are included. Two belt options are available. The BR Belt is a 6" wide elastic belt. The BRX Belt has a pulley system for a secure fit.

WABR



BR Belt - Indicate size when ordering

Size	Measurements
BR-S	28"-38" / 71.1-96.5cm
BR-M	36"-48" / 91.4-121.9cm
BR-L	44"-58" / 111.7-147.3cm

BRX Belt - Indicate size when ordering

Size	Measurements
BRX-S	25"-30" / 63.5-76.2cm
BRX-M	30"-35" / 76.2-88.9cm
BRX-L	35"-40" / 89-101.5cm
BRX-XL	40"-45" / 101.5-114.3cm
BRX-XXL	45"-50" / 114.3-127cm
BRX-XXXL	50"-55" / 127-139.7cm

WABRX



WRAP AROUND APRON (MODEL WA)

Wrap-Around Apron is designed for front and back protection. This apron features extra wide shoulders, distributing weight over a greater area to reduce fatigue and three panel hook and loop fastener. Shoulder pads included.



WRAP AROUND QUICK RELEASE (MODEL WAQR)

Features extra wide shoulders with no hook and loop and distributes weight over a greater area to reduce fatigue. Closes with two 2" quick release buckles; one at the chest and one at waist along with a 1" buckle at the shoulder.

Shoulder pads included.



FULL OVERLAP VEST SKIRT (MODEL FOVS)

This vest and skirt combo reduces the weight by approximately 15% over our traditional Vest Skirt Combos. Vest designed with two fully overlapping front panels and features hook and loop closure. Shoulder pads included for added comfort. See page 10 for skirt description. For vest skirt sizing, refer to page 8.

Model

FOVS Vest Skirt Combo

FOVO Vest Only

SO Skirt Only



PROTECTION OPTIONS			
Full Overlap Vest Skirt (FOVS)			
Wrap Around Full Overlap (WAFO)			
	Front	Front Overlap	Back
RL - Reg Lead TL - TL Lite Ply NL - Non Lead LF - Strata 300	0.25mm Pb Eq	0.5mm Pb Eq	0.25mm Pb Eq
CUSTOM PROTECTION OPTIONS AVAILABLE			
TL Lite Ply and LF Strata 300 not intended for use where exposure exceeds 125KV			
***Non Lead not available in EU or UK			



WRAP AROUND FULL OVERLAP APRON (MODEL WAFO)

Designed with two fully overlapping front panels, this apron reduces weight by approximately 15% over our traditional Wrap Around model. Features extra wide shoulders, hook and loop fastener and shoulder pads for added comfort. For wrap around sizing, refer to page 11.

- Optional: For extra comfort and back support add BR Belt or BRX belt



WRAP AROUND FLEX BACK APRON (MODEL WAFB)

Wrap Around Flex Back Apron features dual wrap elastic flex back with hook and loop side to front flaps while providing front & back protection for an adjustable and secure all around fit. Fits a wide range of sizes. For wrap around sizing, refer to page 11.



FLEX BACK VEST SKIRT (MODEL FBVS)

Flex Back Vest features wrap around protection with flex back support and adjustable hook and loop flaps at the waist and shoulder for added comfort and support, especially during long procedures. Shoulder pads included. For vest skirt sizing, refer to page 8.

Model

- FBVS** Vest Skirt Combo
- FBVO** Vest Only
- SO** SO

PROTECTION OPTIONS		
Flex Back Vest (FBV)		
Wrap Around Flex Back (WAFB)		
	Front	Back
(RL) - Regular Lead	0.5mm Pb Eq	0.3mm Pb Eq
(TL) - TL Lite Ply (NL) - Non Lead (LF) - Strata 300	0.5mm Pb Eq	0.25mm Pb Eq
(RLL) - Regular Lead (TLL) - TL Lite Ply (NLL) - Non Lead (LFL) - Strata 300	0.35mm Pb Eq	0.25mm Pb Eq
Custom Protection Options Available		
TL Lite Ply and LF Strata 300 not intended for use where exposure exceeds 125kV		
***Non Lead not available in EU or UK		

SMOCK TOPS

SMOCK TOP WITH HALF BACK (MODEL SMHB)

Features front and half back protection with one adjustable hook and loop closure at the waist. Also has an adjustable shoulder for ease of putting apron on and adjusting around breast/shoulder area. Because of the versatility in fit, it accommodates a wide range of wearers. Shoulder pads included.

SMHB - Smock Top Half Back

Size	Chest Width	Back Length
S	18"/45.7 cm	16"/40.64 cm
M	20"/50.8 cm	16"/40.64 cm
L	22"/55.9 cm	18"/45.7 cm
XL	24"/61 cm	20"/50.8 cm
XXL	27"/68.6 cm	22"/55.9 cm

Front Length Options

XS - X-Short	30"/76.2 cm
S - Short	32"/81.3 cm
R - Regular	34"/86.4 cm
T - Tall	36"/91.4 cm
XT - X-Tall	38"/96.5 cm



PROTECTION OPTIONS		
Smock Top Half Back (SMHB)		
Smock Top (SM)		
	Front	Back
(RL) - Regular Lead	0.5mm Pb Eq	0.3mm Pb Eq
(TL) - TL Lite Ply (NL) - Non Lead (LF) - Strata 300	0.5mm Pb Eq	0.25mm Pb Eq
(RLL) - Regular Lead (TLL) - TL Lite Ply (NLL) - Non Lead (LFL) - Strata 300	0.35mm Pb Eq	0.25mm Pb Eq
Custom Protection Options Available		
TL Lite Ply and LF Strata 300 not intended for use where exposure exceeds 125kV		
***Non Lead not available in EU or UK		



SMOCK TOP (MODEL SM)

Features front and back protection with two adjustable hook and loop closures, one at the upper waist and one at the lower hip. Also has an adjustable shoulder for ease of putting apron on and adjusting around breast/shoulder area. Because of the versatility in fit, it accommodates a wide range of wearers. Shoulder pads included.

SM - Smock Top

Size	Chest Width
S	18"/45.7 cm
M	20"/50.8 cm
L	22"/55.9 cm
XL	24"/61 cm
XXL	27"/68.6 cm

Front & Back Length Options

XS - X-Short	30"/76.2 cm
S - Short	32"/81.3 cm
R - Regular	34"/86.4 cm
T - Tall	36"/91.4 cm
XT - X-Tall	38"/96.5 cm

Demi and Half Aprons

Demi and Half Aprons

Customize your apron with designer fabrics, embroidery, logos, pockets, etc.

See pages 46-51 for options.

Demi Apron & Half Apron Protection Options

RL-Regular Lead	TL - Lite Ply	NL - Non Lead	LF - Strata 300
RL - 0.5mm Pb Eq RLL - 0.35mm Pb Eq	TL - 0.5mm Pb Eq TLL - 0.35mm Pb Eq	NL - 0.5mm Pb Eq NLL - 0.35mm Pb Eq	LFL - 0.5mm Pb Eq LFL - 0.35mm Pb Eq
Custom Protection Options Available			
RL - Custom 0.3mm Pb Eq 0.25mm Pb Eq	TL - Custom 0.25mm Pb Eq	NL - Custom 0.25mm Pb Eq	**NA**
Special Protection Requirements for EU			
Half Apron (801, 802, 803, 804) Demi Aprons (830)		0.5mm Pb Eq	

TL Lite Ply and LF Strata 300 not intended for use where exposure exceeds 125kV

***Non Lead not available in EU or UK

****IN EU only available in 0.5mm Pb Eq

HALF APRON (MODEL 801-804)

Half Apron is designed for front or back protection. Available with 1" Tie Strap, 2" Quick Release Buckle or Hook and Loop closure. Also available in Pediatrics (Model P-HA).



Ties	Hook and Loop	QR Buckle	Size WxL
801T	801V	801QR	24" x 24" (61cm x 61 cm)
802T	802V	802QR	24" x 20" (61cm x 50.8cm)
803T	803V	803QR	18" x 16" (45.7 cm x 40.6 cm)
804T	804V	804QR	10" x 10" (25.4cm x 25.4cm)

DEMI APRON (MODEL 830)

Demi Aprons feature convenient waist ring, protecting a range of sizes securely without ties or fasteners. The soft PVC covered spring steel ring holds the apron in place.

- Quick Release Buckle option available.
- Rack available: (MODEL 830R) holds four aprons

Waist Ring	QR Buckle	Size
830S	830QR-S	8.5" x 10" (21.6cm x 25.4cm)
830M	830QR-M	12" x 12" (30.5cm x 30.5cm)
830L	830QR-L	16" x 14" (40.6cm x 35.6cm)
830XL	830QR-XL	20" x 16" (50.8cm x 40.6cm)
830	830QR	Set of 4 (S,M,L,XL) with rack



**DEMI APRON RACK
(MODEL 830R)**

Dental Aprons

Customize your apron with designer fabrics, embroidery, logos, pockets, etc.
See pages 46-51 for options.

Standard Protection Options			
RL -Reg Lead	TL-TL Lite Ply	NL-Non Lead	LF - Strata 300
0.3mm Pb Eq	0.25mm Pb Eq	0.25mm Pb Eq	0.35mm Pb
Custom Protection Options			
RL -Reg Lead	TL-TL Lite Ply	NL-Non Lead	LF - Strata 300
RL - 0.5mm Pb Eq	TL - 0.5mm Pb Eq	NL - 0.5mm Pb Eq	LFL - 0.5mm Pb Eq
Special Protection Requirements for EU			
Dental Aprons - 0.35mm Pb Eq or 0.5mm pb Eq			

TL Lite Ply and LF Strata 300 not intended for use where exposure exceeds 125kV
***Non Lead not available in EU or UK

KLING-KUVER™ (MODEL 300KK)

Kling-Kuver™ Dental Patient Apron is designed for complete patient protection of the neck, throat, chest, shoulders and gonadal area. Single hook and loop collar closure with non slip material on inside makes this apron fast and easy to use. Includes hanging loops.

300KK: (Adult) Width 23.5" (59.7cm) Length 28" (71.1cm)

300KKC: (Child) Width 20" (50.8cm) Length 20.5" (52cm)



DENTAL PATIENT APRON (MODEL 300 & 300C)

Dental Patient Apron is easy to apply. Its non-slip backing on inside keeps apron firmly in position by actually "gripping" the patient's clothing. No ties or fasteners involved. Includes hanging loops.

300: (Adult) Width 23" (58.4cm) Length 26" (66cm)

300C: (Child) Width 19" (48.3cm) Length 21" (53.3cm)



Dental Aprons

DENTAL TECH APRON (MODEL E-24x37)

Dental Technologist apron provides excellent dental staff radiologic protection. Back flaps and ties provide fast adjustment and a secure fit. (shown standing)

Model E-24x37: 24" x 37" (61 cm x 94cm)



PANORAMIC PONCHO (MODEL 300PP & 300PPC)

Panoramic Poncho provides excellent front and back radiologic protection during the panoramic dental exam. It also features hook and loop shoulder closures for quick application.

300PP: (Adult)

Front 27" (68.6cm) Back 16" (40.6cm) Width 24" (61 cm)

300PPC: (Child)

Front 12" (30.5cm) Back 6" (15.2cm) Width 23" (58.4cm)



PANORAMIC CAPE (MODEL 310)

Panoramic Cape drapes over shoulders shielding upper torso, front and back. Fastens in back with hook and loop closure.

Model 310: 23" x 25" (58.4cm x 63.5cm)



FULL PANO APRON (MODEL 300FP)

Full Pano Apron provides excellent front and back protection. Features hook and loop shoulder closure and ties for quick application.

Front/Back:

Width 23" (58.4cm)

Length: 26.5" (67.3cm)



Pediatric

Customize your apron with designer fabrics, embroidery, logos, pockets, etc.

See pages 46-51 for options.

Pediatric Apron Protection Options

RL-Regular Lead	TL - Lite Ply	NL - Non Lead	LF - Strata 300
RL - 0.5mm Pb Eq RLL - 0.35mm Pb Eq	TL - 0.5mm Pb Eq TLL - 0.35mm Pb Eq	NL - 0.5mm Pb Eq NLL - 0.35mm Pb Eq	LF - 0.5mm Pb Eq LFLL - 0.35mm Pb Eq
Custom Protection Options Available			
RL - Custom 0.3mm Pb Eq 0.25mm Pb Eq	TL - Custom 0.25mm Pb Eq	NL - Custom 0.25mm Pb Eq	**NA**

TL Lite Ply and LF Strata 300 not intended for use where exposure exceeds 125kV

Special Protection Requirements for EU

***Non Lead not available in EU or UK

PEDIATRIC COAT APRON (MODEL P-ST)

Pediatric Coat Apron features frontal protection with tie closure for easy on and off. Available in our wide selection of fabrics. Includes shoulder pads.

Model	Size	Measures: WxL
P-ST-S	Small	12"x20" (30.5cm x 50.8cm)
P-ST-M	Medium	14"x22" (35.6cm x 53.3cm)
P-ST-L	Large	16"x24" (40.6cm x 61cm)



PEDIATRIC SMOCK TOP (MODEL P-SM)

Features front and back protection with two adjustable hook and loop closures, one at the upper waist and one at the lower hip. Also has an adjustable shoulder for ease of putting apron on and adjusting around breast/shoulder area. Because of the versatility in fit, it accommodates a wide range of wearers. Shoulder pads included.

Model	Size	Size
P-SM-S	Small	12"x20" (30.5cm x 50.8cm)
P-SM-M	Medium	14"x22" (35.6cm x 53.3cm)
P-SM-L	Large	16"x24" (40.6cm x 61cm)



PEDIATRIC HALF APRON (MODEL P-HA)

Pediatric Half Apron with convenient hook and loop fastener. Available in our wide selection of fabrics. Ideal for younger patients.



Model	Size	Measures: WxL
P-HA-S	Small	10"x10" (25.4x25.4cm)
P-HA-M	Medium	12"x10" (30.5x25.4cm)
P-HA-L	Large	14"x12" (35.6x25.4cm)

PEDIATRIC SPINAL STOLE (MODEL P-SS)

Pediatric Spinal Stole features lead-free back for total spine viewing and non-slip underside. Fully adjustable. Available in our wide selection of fabrics.



Model	Size	Measures: WxL
P-SS	Small	14"x5.25" (35.6x13.3cm)

PEDIATRIC THYROID COLLAR (MODEL P-TC)

Pediatric Thyroid Collar features hook and loop rear closure. Available in our wide selection of fabrics or in Royal Blue Nylon for immediate shipment.

Model	Length	Bib
P-TC-S	15" (38.1cm)	3" (7.6cm)
P-TC-L	18" (45.7cm)	4" (10.2cm)



PED PALS (MODEL PP)

Pediatric shield protects children from radiation. Features soft and plush non-slip microfiber backing for added comfort.

- Shield measures 16"W x 18"L (40.6cm x 45.7cm)
- Includes hanging loops for safe and easy storage
- Choice of three child friendly designs

Model	
PP-LBUG	Lady Bug
PP-KITTY	Kitty
PP-BEAR	Bear



Collars

Customize your collar with designer fabrics, embroidery, logos, pockets, etc.
See pages 46-51 for options.

Thyroid Collar Protection Options

RL-Regular Lead	TL - Lite Ply	NL - Non Lead	LF - Strata 300
RL - 0.5mm Pb Eq RLL - 0.35mm Pb Eq	TL - 0.5mm Pb Eq TLL - 0.35mm Pb Eq	NL - 0.5mm Pb Eq NLL - 0.35mm Pb Eq	LFL - 0.5mm Pb Eq LFLL - 0.35mm Pb Eq
Custom Protection Options Available			
RL - Custom 0.3mm Pb Eq 0.25mm Pb Eq	TL - Custom 0.25mm Pb Eq	NL - Custom 0.25mm Pb Eq	**NA**
Special Protection Requirements for EU			
Thyroid Collars		0.35mm Pb Eq 0.5mm Pb Eq	

TL Lite Ply and LF Strata 300 not intended for use where exposure exceeds 125kV
***Non Lead not available in EU or UK

NEW STYLE THYROID COLLAR (MODEL 611NS and 311NS)

New Style Thyroid Collar offers a trim yet shielded and comfortable design. Includes binding and rear hook and loop closure.

Model	Protection	Length	Bib
611NSS	0.5mm Pb Eq	22.5"	9" x 3.75" (22.9cm x 9.5cm)
311NSS	0.3mm Pb Eq	22.5"	9" x 3.75" (22.9cm x 9.5cm)
611NSL	0.5mm Pb Eq	25.5"	9" x 5.5" (22.9cm x 14cm)
311NSL	0.3mm Pb Eq	25.5"	9" x 5.5" (22.9cm x 14cm)



ULTRA THYROID COLLAR (MODEL 621U)

Our softest and most flexible models offer comfort without the binding.
621U: Hook and loop closure
631QR: 1" QR buckle closure



Model	Model	Length	Bib
621US	631QRS	24" (61cm)	9" x 3.75" (22.9cm x 9.5cm)
621 UL	631QRL	26.5" (67.3cm)	9" x 5.5" (22.9cm x 14cm)

QUICK RELEASE COLLAR (MODEL 631QR)



COMFORT FIT THYROID COLLAR (MODEL 641CF)

Features flexible protective design, but without the top binding which makes collar more comfortable to wear. Rear hook and loop closure. Model BC has pink fabric and Breast Cancer logo.



Model	Model	Length	Bib
641CFS	641CFSBC	24" (61cm)	9" x 3.75" (22.9cm x 9.5cm)
641CFL	641CFLBC	25.5" (67.3 cm)	9" x 5.5" (22.9cm x 14 cm)

BC AWARENESS COLLAR (MODEL 641BC)



STANDARD THYROID COLLAR (MODEL 600)

Standard Thyroid Collar is designed for maximum thyroid protection. Includes binding and rear hook and loop closure.

Model	Length	Bib
600S	18.5" (47cm)	10" x 6.5" (25.4cm x 16.5 cm)
600L	22" (55.9cm)	10" x 6.5" (25.4cm x 16.5cm)



ATTACHED COLLAR (MODEL 600A)

Sewn directly to Apron. Available on Model 600 Standard Thyroid Collar only.

***Can't be sewn on vests or wrap arounds.**

Model	Length	Bib
600S	18.5" (47cm)	6.75" x 5.75" (25.4cmx16.5cm)
600L	22" (55.9cm)	10"x6.5" (25.4cmx16.5cm)



NEW!

BIB STYLE THYROID COLLAR (MODEL 671BS)

Bib Style Thyroid Collar is a light weight design with maximum thyroid protection. This collar is lighter as the protection is only in the bib and 2-1/2" on each strap. Includes binding and rear hook and loop closure. One size fits most.

Model	Length (Pb Eq.)	Overall Length	Bib
671BS	13" (33.02cm)	24" (60.96cm)	8" x 5.5" (20.32cm x 13.97cm)



Accessories

Customize with designer fabrics, embroidery, logos, pockets, etc.

See pages 46-51 for options.

Accessory Protection Options

RL-Regular Lead	TL - Lite Ply	NL - Non Lead	LF - Strata 300
RL - 0.5mm Pb Eq RLL - 0.35mm Pb Eq	TL - 0.5mm Pb Eq TLL - 0.35mm Pb Eq	NL - 0.5mm Pb Eq NLL - 0.35mm Pb Eq	LFL - 0.5mm Pb Eq LFLL - 0.35mm Pb Eq
Custom Protection Options Available			
RL - Custom 0.3mm Pb Eq 0.25mm Pb Eq	TL - Custom 0.25mm Pb Eq	NL - Custom 0.25mm Pb Eq	**NA**
Special Protection Requirements for EU			
Thyroid Collars MPS-Multi Purpose Shield RSC-Radiation Safety Cap 810 and 810C-Spinal Stole		0.35mm Pb Eq 0.5mm Pb Eq	
Ovarian Shields: 806, 807 and 822BBV		1.0mm Pb Eq	
Table Scatter Shield (TSS)		0.5mm Pb Eq 1.0mm Pb Eq	

TL Lite Ply and LF Strata 300 not intended for use where exposure exceeds 125kV

***Non Lead not available in EU or UK

PREGNANCY PANEL INSERT (MODEL PPI)

The Pregnancy Panel Insert can be made to go inside any frontal apron. By placing hook and loop on the inside of the apron along with the Pregnancy Panel it can easily be inserted. Pregnancy Panel made to correspond with width and length of apron.



APRON BAG (MODEL AB)

Conveniently holds one apron. Tube shape design allows apron to wrap around a sturdy cardboard tube, while keeping it safe and secure. Includes carrying handle and shoulder strap.

Size: 8" W x 29" L (20.3cm x 73.7cm)



GONAD SHIELDS (MODEL 806)

Gonad shields are available with or without optional Ties, Hook and Loop closure or 1" QR Buckle. If closure is not specified, plain shields will be ordered.



Specify Closure next to P/N: (T) Ties, (V) Hook and Loop, (QR) Buckle

	Ties	Hook and Loop	Buckle	Size
SM:	806S(T)	806S(V)	806S(QR)	3"x5" (7.6cm x 12.7 cm)
MED:	806M(T)	806M(V)	806M(QR)	6"x7" (15.2cm x 17.8cm)
LG:	806L(T)	806L(V)	806L(QR)	7"x9" (17.8cm x 22.9cm)
Set of 3:	806A(T)	806A(V)	806A(QR)	One each of small, medium and large

OVA SHIELDS (MODEL 807)

Ova shields are available with or without optional Ties, Hook and Loop closure or 1" QR Buckle. If closure is not specified plain shields will be ordered. Available in three sizes.



Specify Closure next to P/N: (T) Ties, (V) Hook and Loop, (QR) Buckle

	Ties	Hook and Loop	Buckle	Size
SM:	807S(T)	807S(V)	807S(QR)	3"x4" (7.6cm x 10.1cm)
MED:	807M(T)	807M(V)	807M(QR)	4.5"x5.5" (11.42cm x 13.9m)
LG:	807L(T)	807L(V)	807L(QR)	7"x6" (17.8cm x 15.2cm)
Set of 3:	807AT(T)	807AT(V)	807AT(QR)	One each of small, medium and large

GONADAL & OVARIAN BELT SYSTEM (MODEL 822BBV)

Features four attachable gonad shields in assorted sizes that interchange to one hook and loop belt. Set of 4 includes 2 small, 1 medium and 1 large shield.



RADIATION SAFETY CAP (MODEL RSC)

Adjustable hook and loop tab in back allows for custom fit. Size/diameter is measured with tape around head, just above the ears. Available in three sizes.

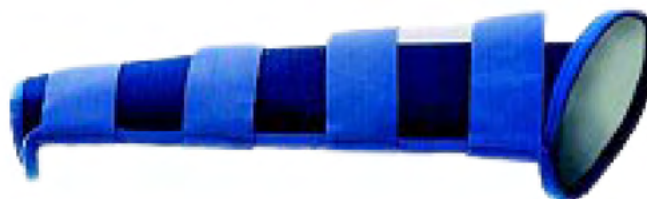
Model	Size
RSC-S	21" (53.3cm)
RSC-M	22" (55.9cm)
RSC-L	23.5" (59.7cm)



LEAD SLEEVE (MODEL 808)

Provides arm protection while allowing complete hand mobility.
Hook and loop closure for fast and easy securing.

Model	Length	Diameter
808S	19" (48.3cm)	6"-12" (15. cm-30.5cm)
808M	21" (53.3cm)	7"-13" (17.8cm-33cm)
808L	23" (58.4cm)	8"-16" (20.3cm-40.6cm)



SHIN GUARDS (MODEL SG)

For long bone (tibia) protection, Shin Guards feature hook & loop closure for easy adjustment and comfort. Shin Guards are wider at the top, tapering down to the foot. Available in two sizes or may be custom ordered. Sold in pairs.

Model	Model w/Foot Flaps	Shin Length
SG-S	SGF-S	13.5" (34.3cm)
SG-L	SGF-L	17" (43.2cm)



SPINAL STOLE (MODEL 810)

Spinal Stole, designed for use in spinal radiograph procedures, features non-slip backing and lead-free back neck area providing total spine viewing. Fully adjustable.
In a hurry? Adult in stock for immediate shipment: Royal Blue Nylon

Model	Size: LxW
810	Adult: 25" x 9" (63.5cm x 22.9cm)
810C	Child: 20" x 5.25" (50.8cm x 13.3cm)



MP SHIELD (MODEL MPS)

Multi-purpose shield may be used for shielding patients or equipment. Non-slip backing keeps shield in place. Available in five sizes.

- *NL non-lead recommended for (non-x-ray) protection purposes from scatter due to seed implants. The metals contained in this item are safe for disposal.

Model	Measurements
MPS-S	18" x 24" / (45.7cm x 61cm)
MPS-M	24" x 24" / (61cm x 61cm)
MPS-L	24" x 36" / (61cm x 91.4cm)
MPS-XL	24" x 48" / (61cm x 121.91cm)
MPS-XXL	36" x 48" / (91.4cm x 121.9cm)



Gloves

All non sterile gloves, mitts & mittens are 0.5mm Pb Equivalency.

GLOVES

LEATHER LEAD GLOVES (MODEL 200L)

This 15" one-piece, dip-molded lead glove features durable goat skin leather cover and foam liner. Sold in pairs.



Model	Color
200L-BLK	Black
200L-F	Fawn

VINYL LEAD GLOVES (MODEL 100V)

Seamless Lead Vinyl gloves are a 15" one-piece, dip-molded glove with supple vinyl cover and foam liner. Sold in pairs.



Model	Color
100V-DKB	Dark Blue
100V-BUR	Burgundy

OPTIONAL REMOVABLE GLOVE LINER

Both glove styles now available with removable washable foam liner. Add (-R) to Model No. when ordering.

Examples:

- 100V-R-DKB
- 100V-R-BUR
- 200L-R-BLK
- 200L-R-F

COTTON LINER INSERTS (MODEL 103INSERT)

Lightweight, washable and absorbent. Keeps hands dry and prolongs glove life. Protects glove linings from perspiration and soil. Sold in 1 dozen pair quantities.



OPEN PALM MITTS (MODEL 104OPM)

Open Palm Vet Mitt shields the back of the hand and features hook and loop wrist strap closure and elastic loops to secure fingers for quick removal. Covered in Dark Blue Vinyl for immediate shipment. Custom coverings optional.



VET MITTS (MODEL 104VM)

Designed for vets as a cost effective solution, the Vet Mitt features wrist slit allowing fingers to exit for freedom of movement during radiography. Contour cut to fit the arm. Covered in Royal Blue Nylon for immediate shipment. Custom coverings optional.



LEAD MITTENS (MODEL 101MIT)

Lead mittens are 15" one-piece, dip-molded mitten featuring soft and supple black goat skin leather or blue vinyl cover with foam liner. Provides full hand and palm protection.

Model	Color
101MIT	Black Leather
101MIT-BV	Blue Vinyl



SLIT LEAD MITTENS (MODEL 101SLMIT)

Slit Mitten features same black leather cover or blue vinyl with foam liner and comes with base of the finger slit allowing for dexterity and hand protection.

Model	Color
101SLMIT	Black Leather
101SLMIT-BV	Blue Vinyl



STERILE ATTENUATIVE GLOVES

For use during interventional procedures, diagnostic heart catheterization, coronary angioplasty, angiocardiology, orthopedics and fluoroscopy procedures.

*Test results in accordance with ASTM Test Method F2547-06.

ATTENUATOR-X (MODEL AX)

Radiation protection gloves

- Lead Free
- Natural Rubber Latex
- Powder Free
- Rolled Cuff for Ease of Donning
- Exceptional Tactile Sensitivity and Flexibility
- High Attenuation
- 0.35mm Thickness

Model	Size
AX-6.5	6 1/2
AX-7	7
AX-7.5	7 1/2
AX-8	8
AX-8.5	8 1/2
AX-9	9



Protection Data

60kVp	80kVp	100kVp	120kVp
60%	53%	46%	41%

RADIATION ATTENUATING SURGICAL GLOVE (MODEL IBG)

- Lead Free
- Non Latex
- Powder Free
- High Attenuation
- High Tactile Sensitivity
- 0.18mm Thickness

Model	Size
IBG-6.5	6 1/2
IBG-7	7
IBG-7.5	7 1/2
IBG-8	8
IBG-8.5	8 1/2
IBG-9	9



Protection Data

60kVp	80kVp	100kVp	120kVp
56.5%	47.1%	41.6%	37.7%

ATTENUATING SURGICAL GLOVES (MODEL ASG)

- Lead Free
- Non Latex
- Excellent Flexibility, Dexterity and Touch Sensitivity
- 0.23mm Thickness

Model	Size
ASG-6.5	6 1/2
ASG-7	7
ASG-7.5	7 1/2
ASG-8	8
ASG-8.5	8 1/2
ASG-9	9



Protection Data




60kVp	80kVp	100kVp	120kVp
45%	36%	29%	24%

Eyewear

WRAP AROUND (MODEL 53)

Wrap Around eyewear features comfortable molded wrap styling in durable tortoise nylon frame with uni-fit bridge and leaded side shields for added protection. Provides excellent peripheral visibility.

- Front Lenses: 0.75mm Pb Equivalency Optical Lead Glass
- Side Shields: 0.75mm Pb Equivalency
- Optional Rx*: Single Vision (SV) and Bifocal (BI)




Model	Wt. (approx.)	Color	
53-T	69 grams	Tortoise	
53-B	69 grams	Black	
53-BB	69 grams	Black/Blue	



ULTRA WRAP AROUND FIT-OVER (MODEL 53UFO)

Fits comfortably over most conventional prescription eyewear while providing front and side lens protection.

- Front Lenses: 0.75mm Pb Equivalency Optical Lead Glass
- Side Shields: 0.5mm Pb Equivalency Lead Foil

Model	Color	Wt. (approx.)	
53UFO-B	Black	92 grams	
53UFO-T	Tortoise	92 grams	
53UFO-W	White	92 grams	



TITANIUM OVAL (MODEL 55)

Features ultra lightweight composition and adjustable non-slip silicone nose pads for maximum long wearing comfort. Included fitted side shields increase scatter radiation protection.

- Front Lenses: 0.75mm Pb Equivalency Optical Lead Glass
- Side Shields: 0.5mm Pb Equivalency
- Optional Rx*: Single Vision (SV), Bifocal (BI) and Trifocal (TFI)

Model	Wt. (approx.)
55	60 grams



RAD-TECH (MODEL 57)

Features lightweight design with stainless metal frame, wrap temple and non-slip adjustable nose pads for stylish, yet comfortable fit.

Included fitted side shields increase scatter radiation protection.

- Front Lenses: 0.75mm Pb Equivalency Optical Lead Glass
- Side Shields: 0.5mm Pb Equivalency
- Optional Rx*: Single Vision (SV) and Bifocal (BI)

Model	Wt. (approx.)
57	65 grams



ASTRO FLEX (MODEL 70)

Astro Flex eyewear features full field panoramic view with adjustable temple length and frame angle for a uniform fit. Impact resistant and durable.

- Front Lenses: 0.75mm Pb Equivalency Optical Lead Glass
- Side Shields: 0.5mm Pb Equivalency
- Optional Rx*: Single Vision (SV) and Bifocal (BI)

Model	Wt. (approx.)
70	83 grams



HORNET (MODEL 77)

Popular wrap-around design provides excellent coverage and features foam brow bar for comfortable flexibility and rubber temple tips and nose pads for non-slip wear. Included fitted side shields increase scatter radiation protection.

- Front Lenses: 0.75mm Pb Equivalency Optical Lead Glass
- Side Shields: 0.5mm Pb Equivalency
- Optional Rx*: Single Vision (SV) and Bifocal (BI)

Model	Color	Wt. (approx.)	
77-O	Orange	66 grams	●
77-Y	Yellow	66 grams	●
77-B	Black/Yellow	66 grams	●



WILEY X-PRO (MODEL 82)

Curved frame provides contoured coverage around eyes. Features non-slip rubberized temples and nose piece for added comfort.

- Front Lenses: 0.75mm Pb Equivalency Optical Lead Glass

Model	Color	Wt. (approx.)	
82-GB	Gloss Black	70 grams	●
82-MB	Matte Black	70 grams	●
82-T	Tortoise	70 grams	●



CHIC (MODEL 85)

Offers "Chic" look and functionality, featuring comfortable head-hugging temple design.

- Front Lenses: 0.75mm Pb Equivalency Optical Lead Glass
- Optional Rx*: Single Vision (SV), Bifocal (BI)

Model	Color	Wt. (approx.)	
85-BL	Black	63 grams	●
85-R	Red	63 grams	●



JACKIE-O (MODEL 86)

Features sunglass-style big lenses and Star Décor with head-hugging temple bars.

- Front Lenses: 0.75mm Pb Equivalency Optical Lead Glass
- Optional Rx*: Single Vision (SV), Bifocal (BI)

Model	Color	Wt. (approx.)	
86-B	Blue w/Black	63 grams	●
86-BL	Black w/White	63 grams	●



RETRO-WAY (MODEL 94)

Retro-Way eyewear features the classic wayfarer-inspired black acetate frame equipped with adjustable nose pads, spring hinges and side-shield protection.

- Front Lenses: 0.75mm Pb Equivalency Optical Lead Glass
- Side Shields: 0.5mm Pb Equivalency
- Optional Rx*: Single Vision (SV) and Bifocal (BI)

Model	Wt. (approx.)
94	80 grams



SPORT WRAP (MODEL 95)

Lightweight frame features wrap around design for added coverage. Includes rubberized temple bars and nose pads.

- Front Lenses: 0.75mm Pb Equivalency Optical Lead Glass
- Optional Rx*: Single Vision (SV) and Bifocal (BI)

Model	Color	Wt. (approx.)
95-R	Red	71 grams ●
95-S	Silver	71 grams ●
95-BL	Black	71 grams ●



ULTRA WRAP (MODEL 96)

The uniframe wrap around frame features rubberized nose pads and a secure fit nose bridge. Medium to larger frame size.

- Front Lenses: 0.75mm Pb Equivalency Optical Lead Glass

Model	Color	Wt. (approx.)
96-S	Silver	78 grams ●
96-BL	Black	78 grams ●



MAX FIT (MODEL 97)

Patented frame design allows for a wide range of prescription lens power. Features a unisex shape, at a slightly smaller size, with soft silicone padding inside the temple bars and nose bridge for added comfort and fit. Includes side shield protection.

- Front Lenses: 0.75mm Pb Equivalency Optical Lead Glass
- Side Shields: 0.5mm Pb Equivalency Lead Foil
- Optional Rx*: Single Vision (SV) and Bifocal (BI)

Model	Color	Wt. (approx.)
97BL	Black	63 grams ●
97R	Red	63 grams ●
97B	Blue	63 grams ●
97S	Silver	63 grams ●



ULTRA FLEX (MODEL 98UF)

Features advanced nylon composite frame with uni-fit ear and nose pieces for comfortable wear. Fits well for those with larger facial features. Includes side shields.

- Front Lenses: 0.75mm Pb Equivalency Optical Lead Glass
- Includes Side Shields: 0.5mm Pb Equivalency Lead Foil
- Optional Rx*: Single Vision (SV) and Bifocal (BI)

Model	Color	Wt. (approx.)
98UFR	Red	73 grams ●
98UFS	Silver	73 grams ●
98UFB	Black	73 grams ●
98UFT	Taupe	73 grams ●
98UFPG	Purple/Grey	73 grams ●
98UFBY	Blue/Yellow	73 grams ●



Sandbags/Sand Socks

SANDBAG SETS

SH Part#	Set Name	Set Includes
CSS1012	Cervical Sandbag Set of 2	(2) 10 lbs - Size 10" x 12"
ASS712	Angiographic Sandbag Set of 2	(2) 7 lbs - Size 7" x 12"
GST-AB-6	Athletic/Bariatric Vinyl Sandbag- 6 Piece Set	(2) 7 lbs - Size 10" x 10" (2) 10 lbs - Size 7" x 16" (2) 20 lbs - Size 12" x 14"
CST-9x9	Cervical Sandbag 2 Piece Set	(2) 5 lbs - Size 9" x 9"
CST-11x11	Cervical Sandbag 2 Piece Set	(2) 10 lbs - Size 11" x 11"
CST-12x14	Cervical Sandbag 2 Piece Set	(2) 20 lbs - Size 12" x 14"
GST-FA-4	Femoral/Angio Sandbag - 4 Piece Set	(1) 5 lbs - Size 5" x 12" (1) 5 lbs - Size 7" x 9" (1) 7 lbs - Size 6" x 14" (1) 10 lbs - Size 7" x 16"
GST-FA-3	Femoral/Angio Sandbag - 3 Piece Set	(1) 5 lbs - Size 5" x 12" (1) 5 lbs - Size 7" x 9" (1) 10 lbs - Size 7" x 16"
GST-8Set	General Sandbag - 8 Piece Set	(2) 3 lbs - Size 5" x 9" (1) 5 lbs - Size 5" x 12" (1) 5 lbs - Size 7" x 9" (2) 7 lbs - Size 6" x 14" (2) 10 lbs - Size 11" x 11"
GST-6Set	General Sandbag - 6 Piece Set	(2) 3 lbs - Size 5" x 9" (2) 7 lbs - Size 6" x 14" (2) 10 lbs - Size 11" x 11"
GST-Var	General Sandbag - 8 Piece Variety Set	(1) 1 lb - Size 4" x 5" (1) 3 lbs - Size 5" x 9" (1) 5 lbs - Size 5" x 12" (1) 5 lbs - Size 7" x 9" (1) 7 lbs - Size 10" x 10" (1) 7 lbs - Size 6" x 14" (1) 10 lbs - Size 7" x 16" (1) 15 lbs - Size 12" x 12"
PST-5Set	Pediatric Sandbag - 5 Piece Set	(1) 1 lbs - Size 4" x 5" (1) 2 lbs - Size 4" x 9" (1) 3 lbs - Size 5" x 9" (1) 5 lbs - Size 7" x 9" (1) 7 lbs - Size 6" x 14"
PST-3Set-3	Pediatric Sandbag 3 Piece	(3) 3 lbs - Size 5" x 9"
PST-3Set-7	Pediatric Sandbag 3 Piece	(3) 7 lbs - Size 6" x 14"
GST-11x11-BH	Positioning Sandbag - Straight Bar Handle	10 lbs - Size 11" x 11"
GST-11x11-BH-2	Positioning Sandbag - Straight Bar Handle - Set of 2	(2) 10 lbs - Size 11" x 11"
GST-11x11-AC	Positioning Sandbag AC Joint w/Wrist Grip	10 lbs - Size 11" x 11"
GST-11x11-AC-2	Positioning Sandbag AC Joint w/Wrist Grip - Set of 2	(2) 10 lbs - Size 11" x 11"
GST-6x14-CO	Positioning Sandbag Kit - Set of 2 w/Compression Band 10"w x 36" L	(2) 7 lbs - Size 6" x 14"

SANDBAG/ SAND SOCK WEBLON COLOR OPTIONS



BLACK



RED



YELLOW



ROYAL BLUE



NAVY BLUE



FOREST GREEN



KELLY GREEN

SINGLE SANDBAGS

SH Part#	Weight	Size
GST-4x5	1 lb	4" x 5"
GST-4x9	2 lbs	4" x 9"
GST-5x9	3 lbs	5" x 9"
GST-7x9	5 lbs	7" x 9"
GST-6x12	5 lbs	6" x 12"
GST-6x14	7 lbs	6" x 14"
GST-7x16	10 lbs	7" x 16"
GST-8x18	12 lbs	8" x 18"
GST-8x21	20 lbs	8" x 21"
GST-9x9	5 lbs	9" x 9"
GST-11x11	10 lbs	11" x 11"
GST-12x14	20 lbs	12" x 14"
GST-10x10	7 lbs	10" x 10"
GST-12x12	15 lbs	12" x 12"



SAND SOCKS

SH Part#	Weight	Size
SST-01	1 lb	3" x 13"
SST-03	3 lbs	4" x 12"
SST-05	5 lbs	5" x 15"
SST-10	10 lbs	6" x 20"
SST-12	12 lbs	6" x 25"
SST-28	10 lbs	6" x 28"
SST-40	15 lbs	6" x 40"
SST-Set-5	(1) 1 lbs	3" x 13"
	(1) 3 lbs	4" x 12"
	(1) 5 lbs	5" x 15"
	(1) 10 lbs	6" x 20"
	(1) 12 lbs	6" x 25"

GENERAL SANDBAGS

SH Part#	W/Grommets	Weight	Size
GS612	GS612-G	3.5 lbs	6" x 12"
GS810	GS810-G	3.5 lbs	8" x 10"
GS618	GS618-G	7 lbs	6" x 18"
GS716	GS716-G	7.5 lbs	7" x 16"
GS722	GS722-G	12 lbs	7" x 22"
GS1213	GS1213-G	13 lbs	12" x 13"
GS1313	GS1313-G	13.5 lbs	13" x 13"



ANGIOGRAPHIC SANDBAG SET (MODEL ASS712)

Model	Size	Weight
ASS712 No Grommets	7" x 12" (17.8cm x 30.5cm)	7 lbs (3.2 kg)
ASS712-G w/Grommets	7" x 12" (17.8cm x 30.5cm)	7 lbs (3.2 kg)



CERVICAL SANDBAG SET (MODEL CSS1012)

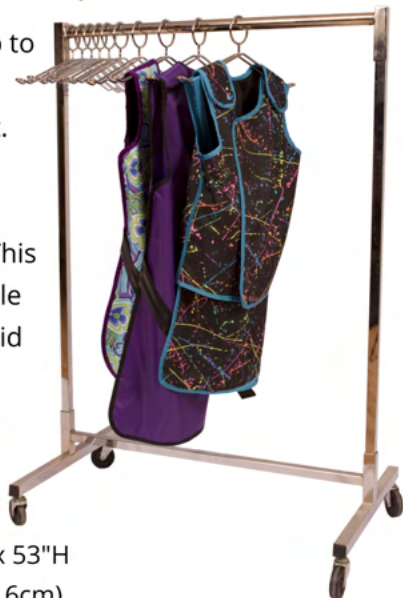
Model	Size	Weight
CSS1012	10" x 12" (25.4cm x 30.5cm)	10 lbs (4.6 kg)



Apron Racks

VALET RACK (MODEL 816)

Valet Rack can hold up to 300 lbs of aprons and can fit into any budget. Equipped with heavy duty casters and 10 closed loop hangers. This unit is extremely mobile allowing aprons, thyroid shields, etc. to be transported easily to workstations.



Dims: 36.5"W x 22.5"D x 53"H
(92.7cm x 57.2cm x 134.6cm)
Weight 36 lbs. (16.3 kg)

PORTA-RAK (MODEL 817)

Porta-Rak is a mobile unit for up to 8 aprons and designed where space is at a premium. Sturdy aluminum five leg base with nylon casters uses only 24" of floor space.



Dims: 24"W x 50"H
(61cm x 127cm)
Weight 29 lbs (13.2 kg)

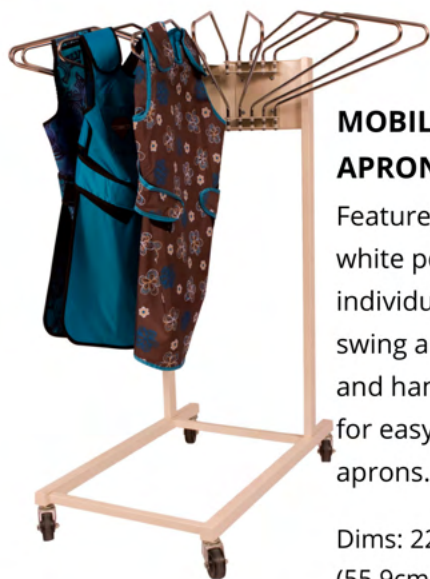
*Additional Hangers (Model 816H) may be ordered separately.

CLOSED LOOP HANGER (MODEL 816H)

Designed for use with the Valet Rack Model 816. Hanger is made of solid steel chrome plated construction.



Width 19" (48.3cm)



MOBILE SWING ARM APRON RACK (MODEL 811M)

Features steel construction with white powder coating and 10 individual chrome shoulder shape swing arms for easy apron access and hanging. Large lock casters for easy movement. Holds 10 aprons.

Dims: 22"W x 36"D x 53"H
(55.9cm x 91.4cm x 134.6cm)
Wt. 48 lbs (21.8kg)



WALL MOUNT SWING ARM APRON RACK (MODEL 811R/L)

Features 5 individual chrome shoulder shape swing arms that fold flush against the wall. Available in right and left folding models. Simply hang two models side-by-side for a 10 hanger wall console unit.

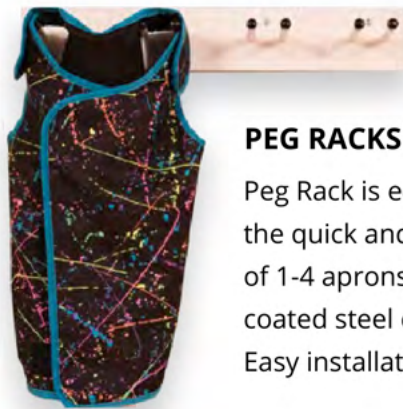
Dims: 27.5"W x 13"H (69.7cm x 33cm)
Wt. 10 lbs (4.5kg)

COMBINATION APRON & GLOVE HOLDER (MODEL 820)

Combination Apron and Glove Holder offers quick, convenient storage for an apron and a pair of gloves. Powder coat and chrome steel construction.



Dims: 27.75"W x 17"H (70.5cm x 42.2cm)
Weight: 8.5 lbs (3.9 kg)



PEG RACKS (MODEL 813)

Peg Rack is economical for the quick and easy storage of 1-4 aprons. Powder coated steel construction. Easy installation.

813 (Holds 1-4 Aprons)

Dims: 24"W x 4"H (61cmx10.2cm)

Wt. 3 lbs (1.4g)

813-2 (Holds 1 Apron)

Dims: 5"Wx4"H (12.7cmx10.2cm)

Wt. 1.5 lbs (680g)

WALL MOUNTED APRON & GLOVE HANGING RACK (MODEL PN814)

Low-profile design requires only 7" of clearance, perfect for small imaging rooms. Each apron hanging rack features pre-drilled mounting holes for quick and simple setup. The premium powder coated exterior offers a durable scuff-resistant surface.

Dims: 29"W x 7"D x 18"H
(73.66cm x 17.78cm x 45.72cm)

Wt. 14 lbs (6.35kg)

***Without optional glove hangers: MODEL PN815**



MULTI-APRON GLOVE RACK (MODEL 821)

Multi-Apron Glove Rack is ideal for storing multiple pairs of gloves and aprons. Also has convenient bar to hold thyroid collars. Mounts quickly and easily to any wall and requires a space only 19" wide. Powder coated heavy steel construction.

Dims: 19"W x 20" (48.3cm x 50.8cm)

Weight: 10 lbs (4.5 kg)



HEAVY DUTY CHROME HANGER (MODEL 200H)

Chrome plated, 3/16" steel hanger recommended to protect garments and increase product life. Apron hanger will hold up to 50 lbs (22.7kg).

Width 21" (53.3cm)

Height 10" (25.4cm)



Shields/Curtains

PORTA-SHIELD (MODEL 1001)

Porta-Shield is ideal for patient protection during diagnostic procedures and features adjustable height from 36" to 60" (91.4cm to 152.4cm) with sturdy five leg base for stable mobility.

- 0.5mm Pb Equivalency
- Model 1001 in stock in Royal Blue Nylon

Model	Shield Size: WxL
1001	24"x24" (61x61cm)
1001-36	24"x36" (61x91.4cm)
1001-48	24"x48" (61x121.9cm)



GRADUATED PORTA-SHIELD (MODEL 1002)

Features seven leaf shield with graduated effect, it fits easily and comfortably over the patient and is perfect for cath lab use. Shield width is 25" (63.5cm) and length of the longest panel is 28" (71.1cm), decreasing in increments of 2" (5cm).

Adjustable from 40" to 64" (101.6cm to 162.6cm) in height.

- 0.5mm Pb Equivalency

Model	Shield Size: WxL
1002	25"x28" (63.5x71.1cm)



ADJUSTABLE MOBILE SHIELD (MODEL 1901)

Adjustable Mobile Shield is easily portable and ideal for shielding patients in such procedures as chest, skull, and spine radiography. Chrome frame.

- In stock in Beige antimicrobial weblon
- Adjustable from 24" to 48" (61cm to 121.9cm) in height.
- Shield width 24" (61cm).
- 0.5mm Pb Equivalency



NON-GRADUATED PORTA-SHIELD (MODEL 1003)

Seven leaf shield is ideal for general radiology, as well as fluoro applications.

- Shield width is 25" (63.5cm) and length is 28" (71.1cm).
- Adjustable from 40" to 64" (101.6cm to 162.6cm) in height.
- 0.5mm Pb Equivalency



TABLE SCATTER SHIELD (MODEL TSS-CUSTOM)

Custom Table Scatter Shield features a saddle back design allowing a secure fit to any style imaging table. The overlapping paneled shields are secured to a padded surface that simply drapes over the tabletop, beneath the mattress.

- Hook and loop utilized on panels to provide a variety of configurations.
- Panels can be sewn onto table pad upon request (extra charge will be included.)
- Customized to specific table dimensions, panel lengths or to include table end flaps.
- Constructed of 0.5mm Pb equivalent panels.
- Select from our wide range of solid color nylons, ripstops or our durable antimicrobial healthcare weblon coverings.



TABLE DRAPES

Table drapes are a single-sided drape that includes self-adhesive hook and loop allowing the panels to be attached to the side of the table.

- Pleated lead panels protect staff against scatter radiation of the lower extremities while allowing unobstructed position of the C-Arm.
- Choose from standard sizes or request custom quote.
- Constructed of 0.5mm Pb Equivalent panels.
- Select from our wide range of nylons, ripstops or our durable antimicrobial healthcare weblon coverings.

WIDTH	LENGTH				
	24"L	28"L	30"L	32"L	36"L
20"W	TD-2024	TD-2028	TD-2030	TD-2032	TD-2036
22"W	TD-2224	TD-2228	TD-2230	TD-2232	TD-2236
24"W	TD-2424	TD-2428	TD-2430	TD-2432	TD-2436
30"W	TD-3024	TD-3028	TD-3030	TD-3032	TD-3036
36"W	TD-3624	TD-3628	TD-3630	TD-3632	TD-3636
48"W	TD-4824	TD-4828	TD-4830	TD-4832	TD-4836



CURTAIN (MODEL CURTAIN)

Curtains are ceiling mounted with optional tracking and are an ideal and economical solution for temporary or permanent set-ups requiring radiation protection where a fixed protective wall is not practical. Curtain sections easily hang and fasten together to cover large areas. Curtains can be made with or without panels.



- Curtains exceeding 36" wide require panels (2" Overlap) with hook and loop sewn to adjoining panel sides. Overlap will contain lead.
- Pricing includes grommets spaced according to curtain width (typically spaced 6-12" intervals with first and last grommets placed 1" from ends and center of grommet 1/2" from top of curtain.
- Lead Eq. Available: 0.25mm, 0.3mm, 0.35mm, 0.5mm, 0.75mm, 0.8mm, 1.0mm, 1.5mm & 2.0mm
- Option Curtain Tracking & Chain Available
- Tracking includes: (Slides, lock & stops)

CT BREAST SHIELDS

CT Breast Shields offer up to a 57% reduction of radiation exposure during CT scan without significant changes in image quality, including artifacts and beam hardening effects. Shield consists of a thin (1mm) piece of bismuth impregnated synthetic rubber covering that mounts firmly on an offset quarter inch foam base. Designed for multiple uses. Additional foam offsets available. Available in Adult and Pediatric sizes.

Model	Adult Size	Quantity
CT-BS-M	Medium	1 each
CT-BS-L	Large	1 each
CT-BS-COV	Disposable cover	10 pack

Model	Pediatric Size	Quantity
CT-PBS-N	Neonate	10 pack
CT-PBS-1	1 Year Old	8 pack
CT-PBS-5	5 Year Old	6 pack
CT-PBS-10	10 Year Old	4 pack



CT EYE SHIELDS (MODEL CT-ES)

CT Eye Shields, designed for use in head and facial CT scans, mold over the nasal bridge with the eye shield portions laying flat over the patient's closed eyes allowing for about a 50% dose savings to the eye lens. CT Eye Shield consists of a single piece thin (1mm) layer of bismuth impregnated synthetic rubber with adhesive back strip to ensure a tight seal with minimal air gaps.

Intended as a single use product to prevent against potential biological contamination.

Model	Quantity
CT-ES	20 pack



CT THYROID SHIELDS (MODEL CT-TS)

CT Thyroid Shields, when used for the soft tissues of the neck, offer a 60% dose savings to the radiosensitive thyroid gland during CT procedures. CT Thyroid Shield consists of a thin (1mm) piece of bismuth impregnated synthetic rubber and features a curved notch in the center to ensure proper positioning.

Lateral bow ties are also attached to the inferior flaps of the shield to accommodate larger necks or larger thyroid glands that extend beyond the clavicle or sternum.

Adhesive back holds the shield firmly in place as patient breathes and swallows.

Model	Quantity
CT-TS	10 pack



Blockers/Lead Vinyl Sheets

BLOCKERS/LEAD VINYL SHEETS

X-CURTAINS (MODEL XCURTAIN)

Shielding's X-Curtains are manufactured specific to the needs of our customer's exclusive cabinet x-ray system engineering, color and protection (Pb equivalency) level requirements.

- **Standard X-Curtain (Model XCURTAIN)** features durable dual sided PVC vinyl outer covering impregnated with leaded vinyl.
- **Shielding's Specialty Curtain (Model XCURTAIN/SC)** features low coefficient outer covering with mesh scrim reinforcer impregnated with leaded vinyl making this product preferable to applications that are processing lighter weight items (i.e. purses, wallets, jackets, etc.).

Features lead equivalencies: 0.25, 0.35, 0.5 and 1.0mm, depending on level of protection and type of X-Curtain. Alternate equivalencies may be manufactured, but require a minimum.

Outer covering:

Model XCURTAIN available in black or beige.

Model XCURTAIN/SC in black only.

Dims: Available in sheet size (48"x96"/121.9cmx243.8cm) or custom die cut to your engineering specification.



LEAD VINYL BLOCKERS (MODEL SB)

Coated Lead Vinyl Blockers feature a smooth sanitary non-absorbent surface for easy cleaning and are stocked in a range of sizes.

Color: Beige

Size	Pb 0.5mm	Pb 1.0mm
4"x10" (10.2cmx25.4cm)	SB1.5	SB1
5"x8" (12.7cmx20.3cm)	SB2.5	SB2
5"x12" (12.7cmx30.5cm)	SB3.5	SB3
6"x10" (15.2cmx25.4cm)	SB4.5	SB4
5.5"x14" (14cmx35.6cm)	SB5.5	SB5
7"x11" (17.8cmx28cm)	SB6.5	SB6
7"x17" (17.8cmx43.2cm)	SB7.5	SB7
8.5"x14" (21.6cmx35.6cm)	SB8.5	SB8
8.5"x17" (21.6cmx43.2cm)	SB9.5	SB9
10"x12" (25.4cmx30.5cm)	SB10.5	SB10
11"x14" (28cmx35.6cm)	SB11.5	SB11

LEAD VINYL SHEETING (MODEL 901, 902, 903)

Coated Lead Vinyl Sheeting drapes readily for on the job applications wherever flexible lead sheeting is required and is offered in a variety of lead equivalencies.

Sold in sheet size 48" x 96" (121.9cm x 243.8cm) or cut to specifications. Cutting charge applies. Cutting charge does not apply to these sizes: 12"x12", 18"x18", 24"x24", 24"x36", 24"x48".

Color: Beige

*Black available for technical applications, subject to full sheet or volume ordering. (Model XCurtain)

Model	Pb Eq
901	0.25mm
902	0.5mm
903	1.0mm



MOBILE SCREENS (MODEL MS)

Mobile Leaded Screens feature 2.0mm Pb equivalent lead lining, framed with heavy metal channeling and stainless-steel legs with heavy duty smooth rolling casters to ensure stability. Lead glass window is 2.0mm Pb equivalent and 10x12" in size. Window is centered 60" from the bottom panel. Screens are available in multiple sizes which are listed below. Please note 84" high barriers may not fit through all doorways.

Size	Part Number
24" x 72"	MS-2472-10
24" x 84"	MS-2484-10
30" x 72"	MS-3072-10
30" x 84"	MS-3084-10
36" x 72"	MS-3672-10
36" x 84"	MS-3684-10
45" x 72"	MS-4572-10
45" x 84"	MS-4584-10

Note: A crating charge applies to all orders.



MOBILE BARRIERS (MODEL MB)

Mobile Leaded Barrier features 2.0mm Pb equivalent opaque panels of solid leaded x-ray protection with contoured sides and stainless-steel legs with heavy duty smooth rolling casters to ensure stability. The overall size is 75" H x 33.5" W and you can choose from the window sizes listed below. The window material is 2.0mm lead equivalent high quality Schott leaded glass.

Window Size	Part Number
24"x30"	MB-2430-LSG
24"x30" (tilted)	MB-2430-B (tilted)
30"x60"	MB-3060
30"x48"	MB-3048
36"x48"	MB-3648

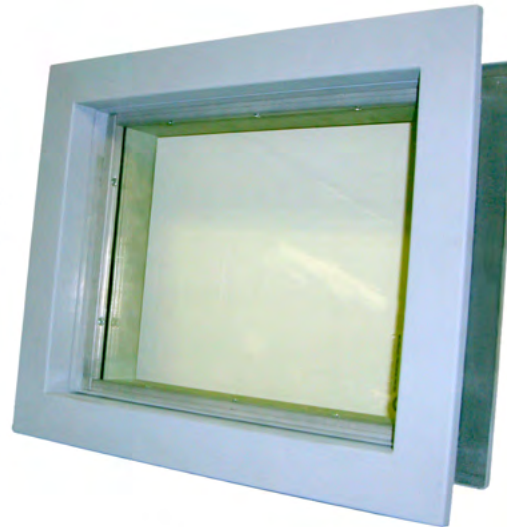
Note: A crating charge applies to all orders.



Mobile Barrier/Screens Lead Glass and Frames

TELESCOPIC LEAD FRAMES (MODEL LF)

Manufactured for ease of installation in rough opening after wallboard is installed. Constructed from 16 gauge "JETCOAT" (HGDS) steel for rust resistance with paintable surface and fully lined with 1/16" lead lining. Adjusts for walls 4-1/4" (10.8 cm) to 7" (17.8 cm) thick. Fits into rough opening of 1" larger than glass size.



Leaded Glass w/Frame

LEADED GLASS WINDOWS (MODEL LG)

Made of high quality optical grade material, offering excellent radiation protection and superb visual clarity. Available in custom sizes up to 48"x96". For cost effectiveness, refer to standard sizes below.

Lead Equivalent	Thickness	X-Ray Peak Voltage
1.6-2.0mm (1/16" - 5/16")	7-9mm	150 kVp

Size	Lead Frame Model No.	Lead Glass Model No.	Size	Lead Frame Model No.	Lead Glass Model No.
8"x10"/20.3cmx25.4cm	LF810	LG810	24"x36"/61cmx91.4cm	LF2436	LG2436
10"x10"/25.4cmx25.4cm	LF1010	LG1010	24"x48"/61cmx121.9cm	LF2448	LG2448
10"x12"/25.4cmx30.5cm	LF1012	LG1012	30"x30"/76.2cmx76.2cm	LF3030	LG3030
12"x12"/30.5cmx30.5cm	LF1212	LG1212	30"x36"/76.2cmx91.4cm	LF3036	LG3036
12"x16"/30.5cmx40.6cm	LF1216	LG1216	32"x40"/81.3cmx101.6cm	LF3240	LG3240
12"x18"/30.5cmx45.7cm	LF1218	LG1218	36"x36"/91.4cmx91.4cm	LF3636	LG3636
12"x20"/30.5cmx50.8cm	LF1220	LG1220	36"x48"/91.4cmx121.9cm	LF3648	LG3648
12"x24"/30.5cmx61cm	LF1224	LG1224	36"x60"/91.4cmx152.4cm	LF3660	LG3660
14"x18"/35.6cmx45.7cm	LF1418	LG1418	36"x72"/91.4cmx182.9cm	LF3672	LG3672
16"x20"/40.6cmx50.8cm	LF1620	LG1620	36"x84"/91.4cmx213.4cm	LF3684	LG3684
16"x24"/40.6cmx61cm	LF1624	LG1624	36"x96"/91.4cmx243.8cm	LF3696	LG3696
18"x24"/45.7cmx61cm	LF1824	LG1824	48"x48"/121.9cmx121.9cm	LF4848	LG4848
18"x26"/45.7cmx66cm	LF1826	LG1826	48"x60"/121.9cmx152.4cm	LF4860	LG4860
20"x24"/50.8cmx61cm	LF2024	LG2024	48"x72"/121.9cmx182.9cm	LF4872	LG4872
24"x24"/61cmx61cm	LF2424	LG2424	48"x84"/121.9cmx213.4cm	LF4884	LG4884
24"x30"/61cmx76.2cm	LF2430	LG2430	48"x96"/121.9cmx243.8cm	LF4896	LG4896

MOBILE BARRIER/SCREENS LEAD GLASS AND FRAMES

Fit & Sizing

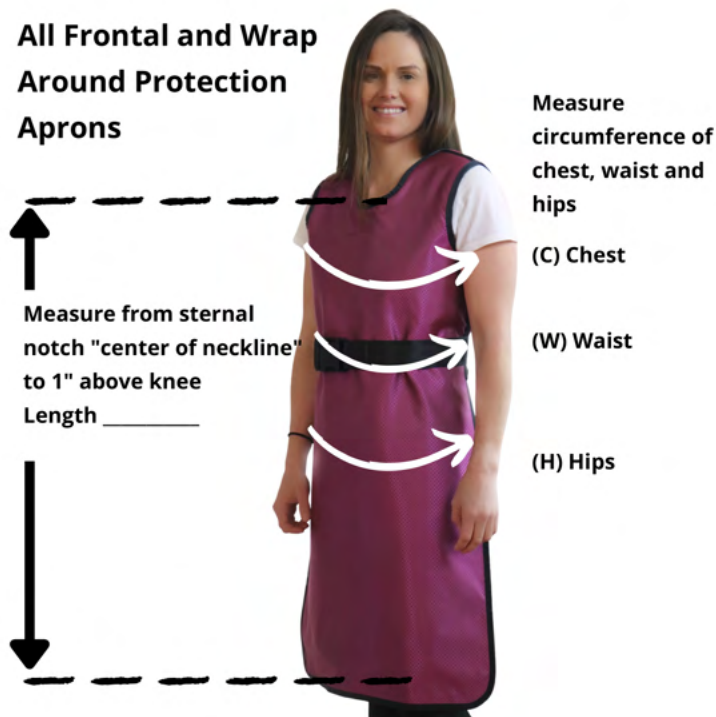
Ordering an apron is easy!

Select your model number from pages.

Use loose measurements to find the correct apron width and length from the charts below.

Choose your protection from charts at beginning of sections.

All Frontal and Wrap Around Protection Aprons



Two Piece Vest Skirt



CUSTOM SIZING

Available on all models - specify measurements

Chest: measure widest part 1" below armhole

Waist: measure narrowest part 1" above navel

Hips: measure widest part of hips

Length: measure from sternal notch to knee

When choosing size take into consideration your widest measurement (chest, waist, hip), then specify width and length desired.

CAN'T FIND YOUR SIZE? CUSTOMIZE!

Additional charges may apply for size customizations. Contact us.

All custom apparel is non-returnable/non-refundable.

Model No. _____

Chest _____

Armholes _____

Skirt Belt Line _____

Waist _____

Hips _____

Length _____

Length Vest _____ Skirt _____

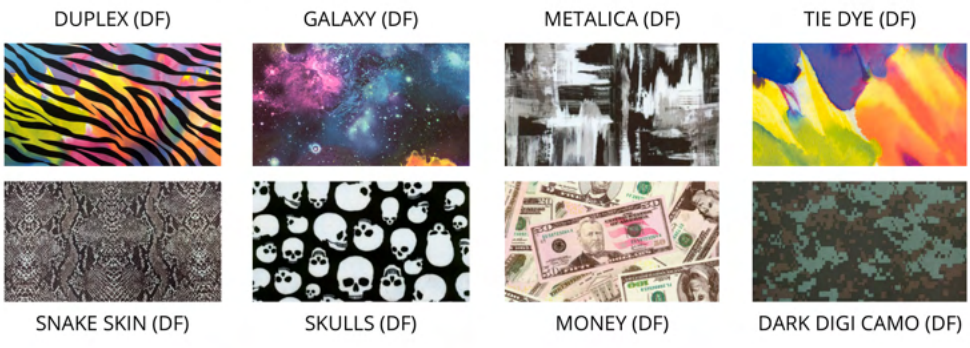
Protection Option _____

Fabrics & Customizations

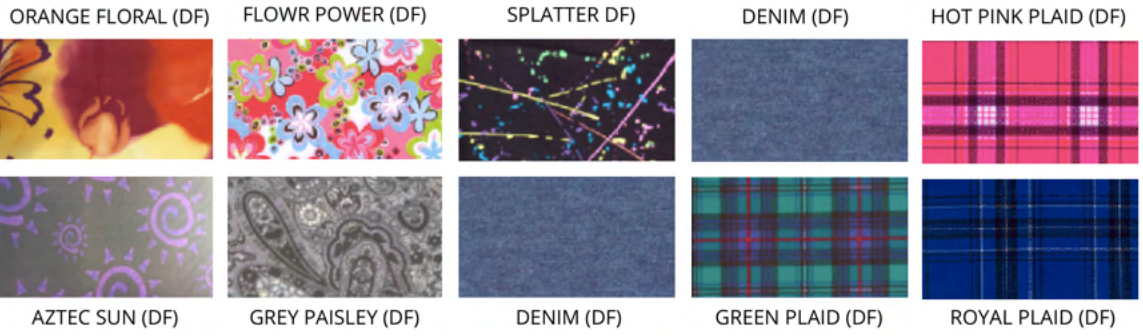
FABRIC AND BINDING EXCEPTIONS

- Fabric and binding colors are approximate representations of actual color/patterns available.
- Economy aprons (Model E) are available in Vinyl (V), Nylon (NY) or Diamond Ripstop (DRS) only.
- Diamond Ripstop (DRS) and Designer Fabrics (DF) features a black nylon inside cover and black binding.
- Nylon (NY) features the same color inside and outside except for Hot Pink or Light Orange as those get black on the inside.
- Weblon (W) and Vinyl (VI) aprons feature black nylon or corresponding inside nylon cover.
- Weblon (W) aprons feature a black or corresponding inside nylon cover.
- Black binding is standard on most apparel, unless otherwise indicated from binding selection at time of order. Except for:
 - Royal binding on royal nylon, vinyl and light blue vinyl
 - Grey binding on grey weblon and grey vinyl
 - Beige binding on beige weblon and beige vinyl
 - Green binding on green weblon
- Two tone coverings subject to up-charge.
- To avoid snagging or tearing of fabric, all hook and loop fasteners must be secured properly.

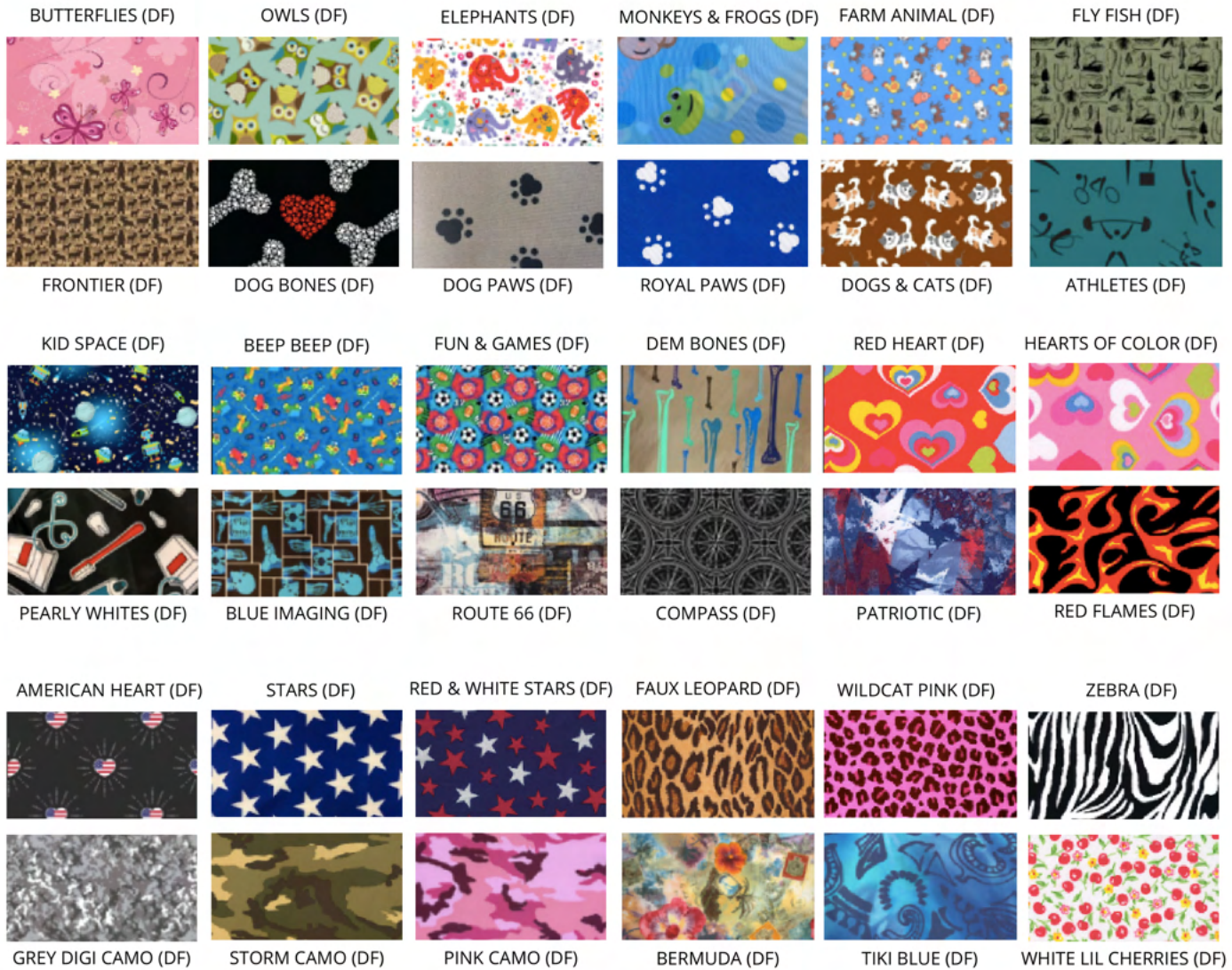
NEW DESIGNER FABRICS (DF)



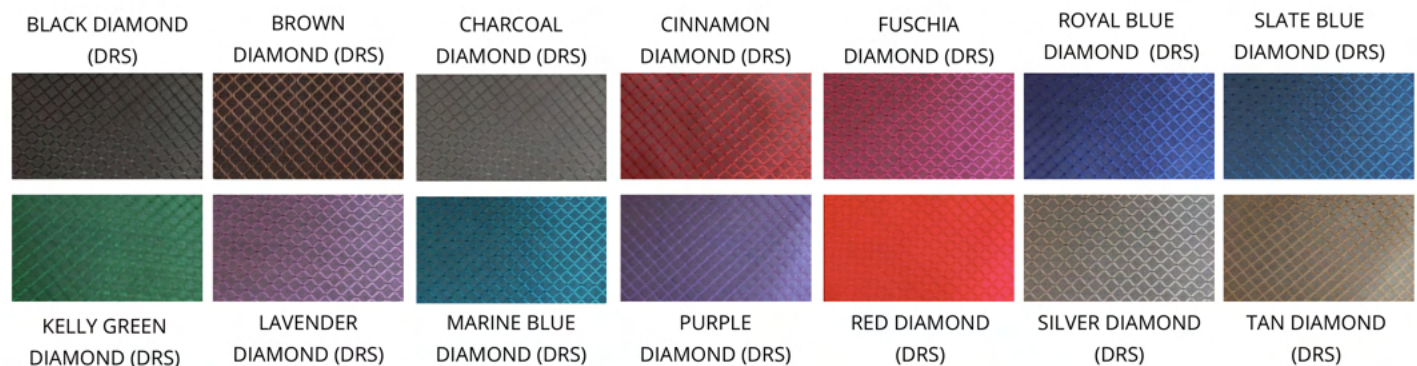
DESIGNER FABRIC PRINTS (DF)



DESIGNER FABRIC PRINTS (DF)



DIAMOND RIPSTOP



RIPSTOP



VINYL



NYLON



WEBLON



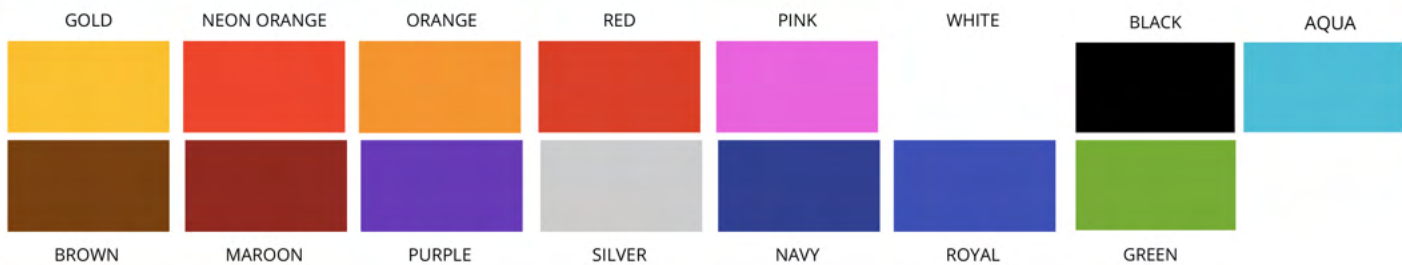
*Tan, Gray and Green are antimicrobial

BINDINGS

Black binding is standard on most apparel, unless otherwise indicated from binding selection at time of order.

Except for:

- o Royal binding on royal nylon, vinyl and light blue vinyl
- o Grey binding on grey weblon and grey vinyl
- o Beige binding on beige weblon and beige vinyl
- o Green binding on green weblon



OTHER EMBROIDERY OPTIONS

- Custom Logos (subject to one time setup fee)
- Stock Designs
- Personalization
- Removable Name Tag

For additional embroidery designs, go to dakotacollectibles.com.

*Additional charge if over 20,000 stitch count



Removable Name Tag



Bottom Corner



Back Shoulder

EMBROIDERY PERSONALIZATION LETTER STYLES

Can't find your letter style? Call for assistance.

Shielding Intl.
Garamond

Shielding Intl.
Block

Shielding Intl.
Script

Shielding Intl.
Micro Scan

Shielding Intl.
Impress

CUSTOM APRON OPTIONS

OPTIONAL SLEEVE (MODEL 812)

For upper arm protection. Features inner fastener for girth adjustment. Permanently sewn onto apron, or select hook & loop or snap fastener for easy attachment and removal.

Model No. **Length - Measure from shoulder to elbow**
812 8" - 16" (20.3cm - 40.6cm)



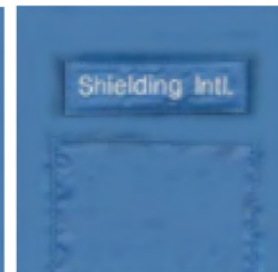
POCKET STYLES



Slit



Patch



Velcro Name Tag

SHOULDER STRAP



NON-SLIP SKIRT BACKING



ADDITIONAL APRON OPTIONS

- Attached Thyroid Collar
- Tethered Thyroid Collar
- Tu-Tone Covering (specify inside & outside fabric choice)
- Removable Name Tag
- Additional QR Quick-Release Buckle (specify 1" or 2")
- Built-In Vest Belt
- Skirt Suspenders
- Pockets
- Hanging loops

ORDERING INFORMATION

Fast and Friendly Service

To order: Orders may be placed through a preferred or nearby **Shielding International™** dealer. Feel free to contact us for a referral to select a dealer near you.

Call us!

1-800-292-2247 or
541-475-7211
Monday - Friday;
7am - 3:30pm PST

Email Us!

info@shieldingintl.com
We'll reply ASAP

Fax Us!

541-475-6628
All day, every day

Mail Us!

Shielding International™
2150 NW Andrews Drive
Madras, OR 97741
USA

Visit Us on the Web!

www.shieldingintl.com

Manufacturing and Delivery Time

Stock **Shielding International™** products ordered with select stock coverings and closures will usually be shipped within 24-48 hours of order receipt. These items include Economy & Standard Aprons, Half & Demi Aprons, Thyroid Collars, Gonad Shields, Gloves, Apron Racks, Mobile Shields, CT Shields, Non Rx Glasses and other select items. We will make every effort to ship all other custom made orders, with exception of high volume and special orders (ie., prescription glasses, lead or acrylic glass or frames and barriers) within 12 to 15 working days of confirmed order.

Shipping

Orders are normally shipped with a leading major transportation carrier via ground service, unless otherwise specified, and ship F.O.B. Madras, Oregon or from a predetermined special order location(s).

- **IMPORTANT:** Be sure to inspect all merchandise at time of delivery, report any damage immediately, note any discrepancies on the Bill of Lading (if applicable) and **RETAIN ALL PACKAGING MATERIAL** (whether damage is visible or concealed) in the event a claim is filed due to shipping damage.

Rush Service

Shielding International™ offers a 3-day RUSH SERVICE for 25% on total cost of order or a 5-day RUSH SERVICE for 20% of the total cost. (min. \$20.00 rush fee per order). Contact us regarding large quantity rush orders to verify this service.

Apron Care & Guidelines:

To maintain safe performance, as well as keep your x-ray apparel looking good for many years to come, **Shielding International™** strongly recommends that each garment be thoroughly inspected upon receipt at regular intervals, as well as properly stored when not in use. Each piece of **Shielding International™** apparel is accompanied by an Apron Care & Guideline sheet for guidance in inspection and proper care of our products.

- **STORAGE:** Don't fold, crease, drape or sit down in your SHIELDING garments. We strongly recommend that our aprons be hung on a SHIELDING heavy duty chrome hanger (Item# 200H) or equivalent, not on a hook.
- Hook and loop closures must be secured properly to avoid snagging or tearing of fabric. Always store apron with hook loop closed.

Failure to properly care for your apron may result in harm to the apron, as well as void its warranty.

Guarantee & Warranty Disclaimer

Shielding International™ warrants all Regular Lead and TL Lite Ply x-ray protective aprons from material defects and workmanship for a period of two years from date of purchase. (*Non Lead aprons are limited to a one year warranty.*) This guarantee is limited to the repair or replacement of the garment in case of manufacturer defect. The guarantee does not cover normal wear and tear, failure to properly care for the product, or any other responsibility.

Apron Recycling Program

Take advantage of **Shielding International™**'s free apron recycling program for the return/recycle of your retired lead aprons! Simply contact us for a return authorization to arrange for the recycling of your old aprons. All you pay is the freight and **Shielding International™** will assure the safe and environmentally friendly disposal of your old lead aprons.

ShieldingTM INC

International

Contact:

2150 NW Andrews Dr.
MADRAS, OR 97741-0120
TOLL FREE: (800) 292-2247
TEL: (541) 475-7211
FAX: (541) 475-6628
EMAIL: info@shieldingintl.com
www.shieldingintl.com

Distributed by:

