



THE AUTOMOTIVE LIGHTING BENCHMARK

# 2016+ TACOMA XB LED HEADLIGHTS INSTALL GUIDE

**WARNING:** By reading this document, you agree it is only to be used as an educational guide. Morimoto Lighting nor its dealers make guarantees on any finished results, nor are they to be held responsible for any damage, misuse, or personal injuries. If you are unable to clearly understand and adapt the information below, professional installation is recommended.

## PACKAGE CONTENTS



2X HEADLIGHT ASSEMBLIES

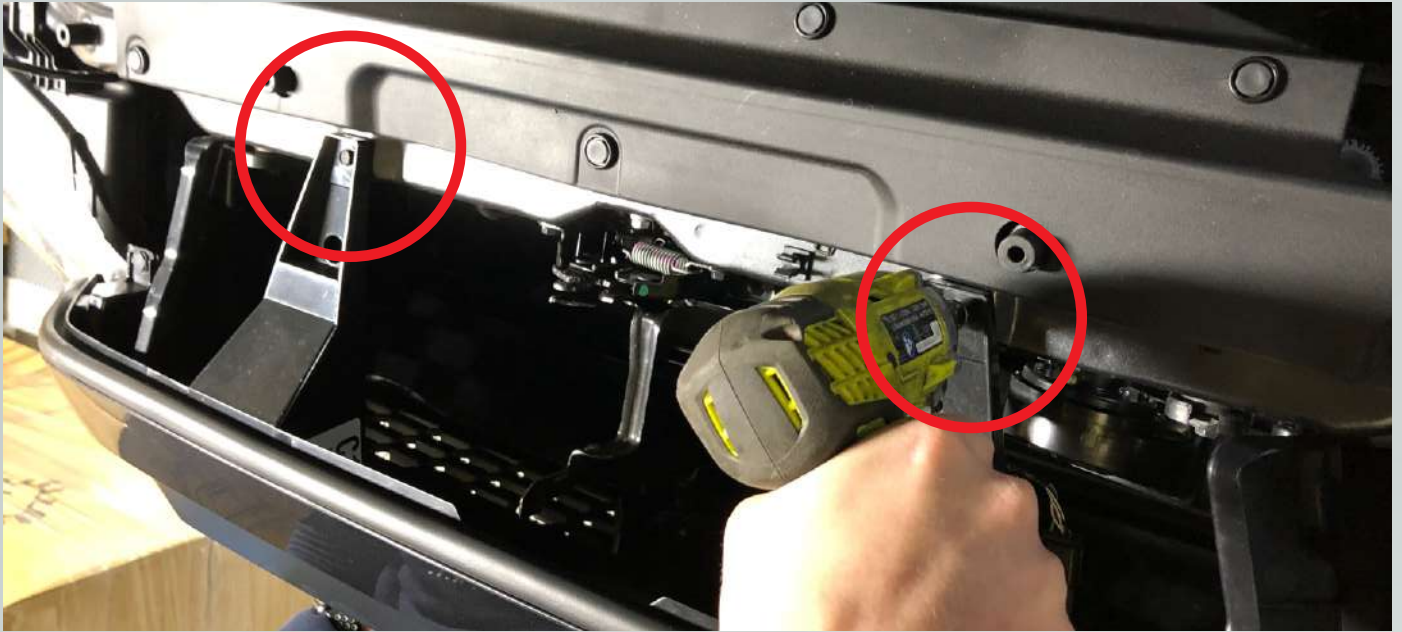


1X FUSE TAP / DRL HARNESS

**IMPORTANT:** If your vehicle is equipped with anything but OEM turn signals (full assemblies, LED bulbs, or otherwise) in the tail lights or elsewhere: You may experience a hyper flash and/or problem with the sequential signal setting on these headlights. This is not a defect in the headlight, and caused by un-matched impedance with your original vehicle settings.

# INSTALLATION PROCESS

1. Remove the two 10mm screws on the top of the grille.



2. Remove the two (2) two-piece push clips from the corner of the top of the grille, one on each side.



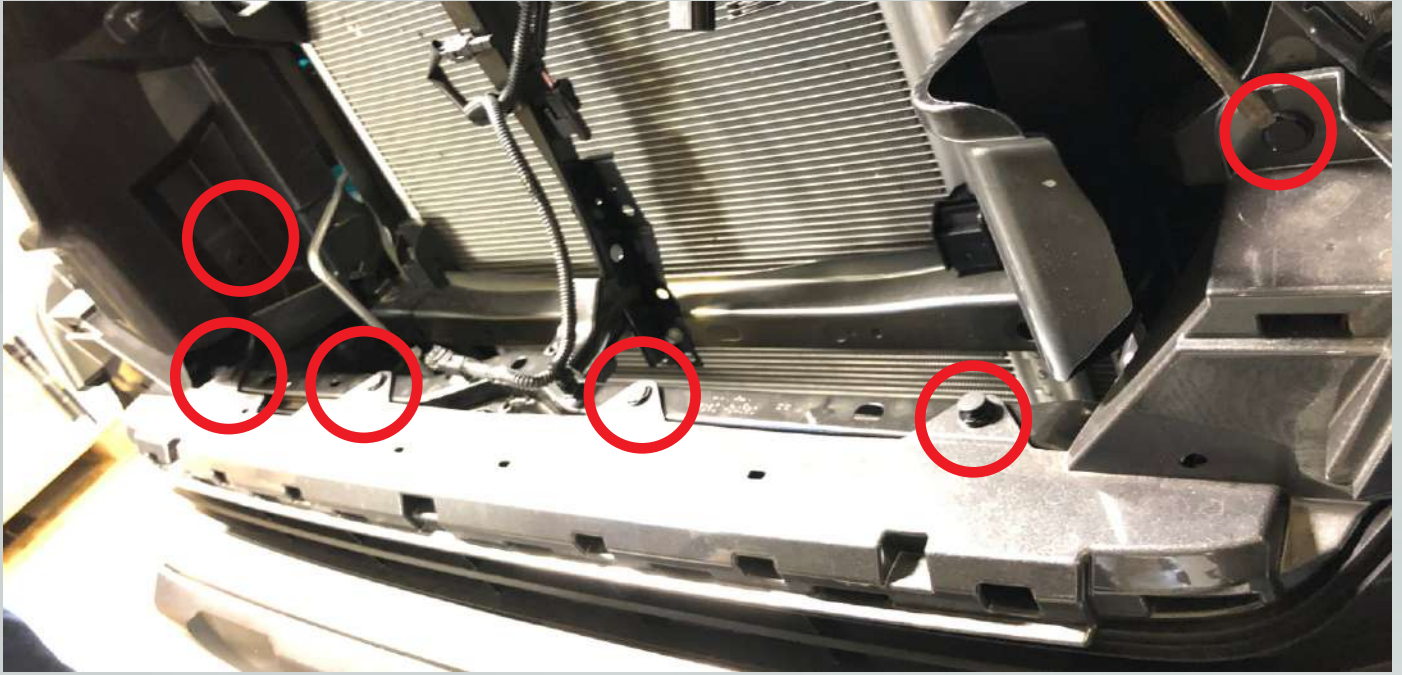
3. If equipped, unplug the auto-braking sensor connector from the grille assembly.



4. Remove the grille by pulling forward to release the clips. Grab grille near fake vents below headlights.



5. Remove the six (6) push clips along the top of the bumper cover.



6. In the wheel wells, turn the plastic screw clips 1/4-turn counterclockwise. Remove clips.



7. Also in the wheel well, remove the 10mm screws above the prior step's clips.



8. Under each corner of the bumper, remove the two (2) 10mm screws.



9. Remove the two (2) 10mm screws at the center of the bumper cover, underneath.



10. If the truck has factory fog lights, unplug the connector at the center of the bumper.



11. The bumper cover is now loose and ready for removal. Set aside.



12. Remove the two 10mm screws at the top of each headlight.



13. Remove the 10mm screw from the side of each headlamp.



14. Lift the tabs of the headlight by prying them up over the white clips that retain them.





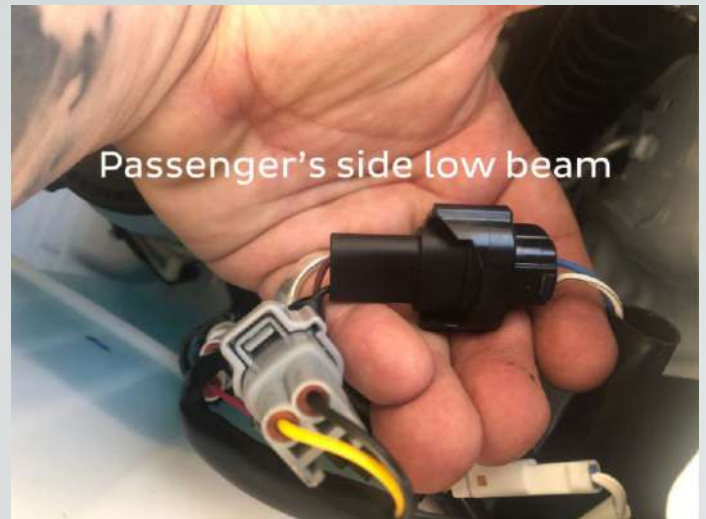
15. Unplug all connections from the factory headlights. Remove factory headlights.



16. Connect the XB LED's "LOW" connector to the factory low beam connector (which has a green insert).



Driver's side (LH) low beam - Red to Red



Passenger's side (RH) low beam - Red to Blue

17. Connect the XB LED's "HIGH" connector to the factory high beam connector (which has a yellow insert).



Driver's side (LH) high beam -  
Black to white w/ black stripe



Passenger's side (RH) high beam - Red to Yellow

18. Connect the side marker connector to the XB LED headlight.

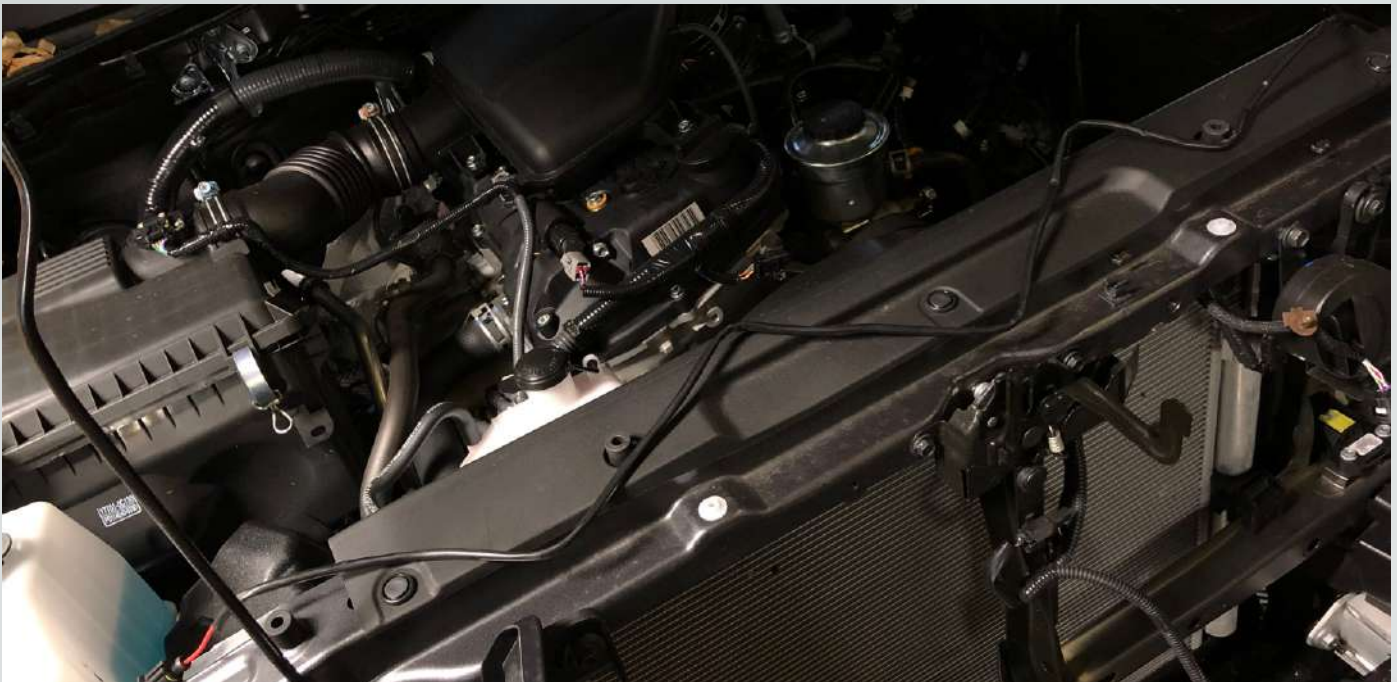


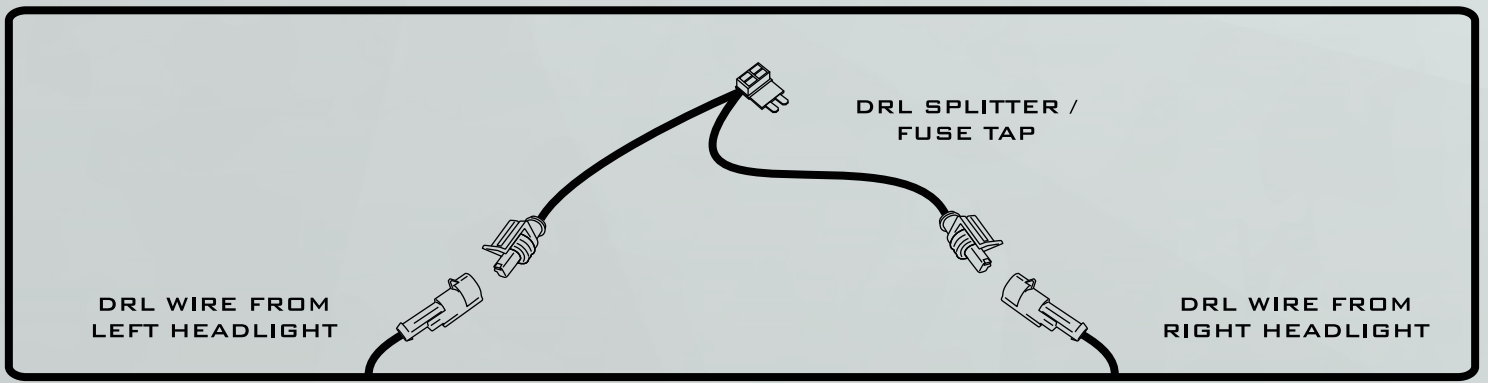
19. Connect the turn signal connector to the XB LED headlight.



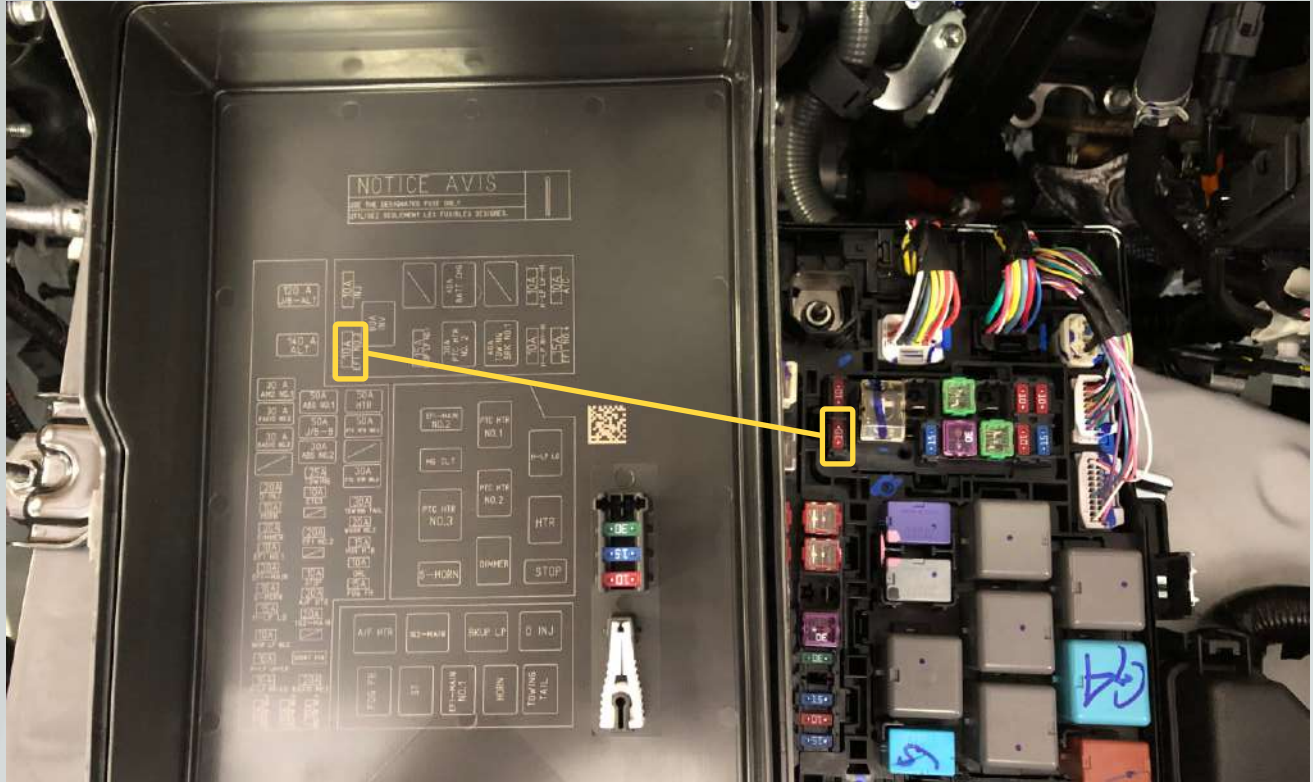
**NOTE: If your truck has the factory LED DRLs, skip to step #22!**

20. Route the DRL fuse tap harness across the radiator support panel.





21. Connect fuse tap to the indicated fuse below:



22. Configure turn signal function to your preference.

### SEQUENTIAL TURN SIGNAL TOGGLE



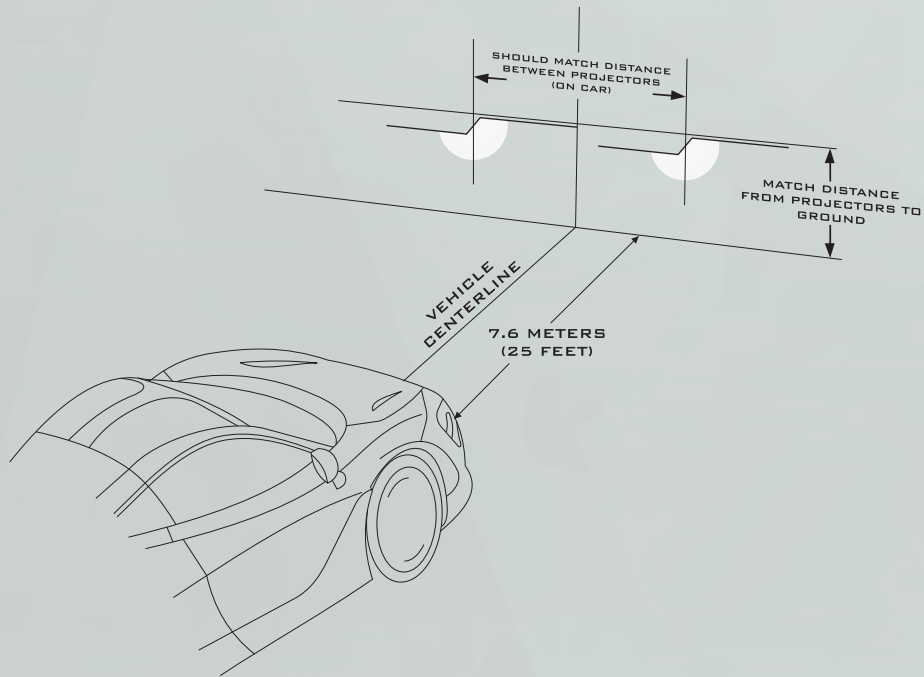
SEQUENTIAL TURN SIGNAL OPERATION



STANDARD (BLINKING) TURN SIGNAL OPERATION

23. Installation of XB LED headlights is reverse of removal.

24. Please refer to the aiming standards below when adjusting your lights.



TROUBLESHOOTING: Should you blow a low or high beam fuse, the below info will be helpful!

- 1 - LH (Driver's side) Low Beam
- 2 - RH (Passenger's side) Low Beam
- 3 - LH (Driver's side) High Beam
- 4 - RH (Passenger's side) High Beam
- 5 - Printed as "Dimmer" but this is for BOTH high beams



-END-