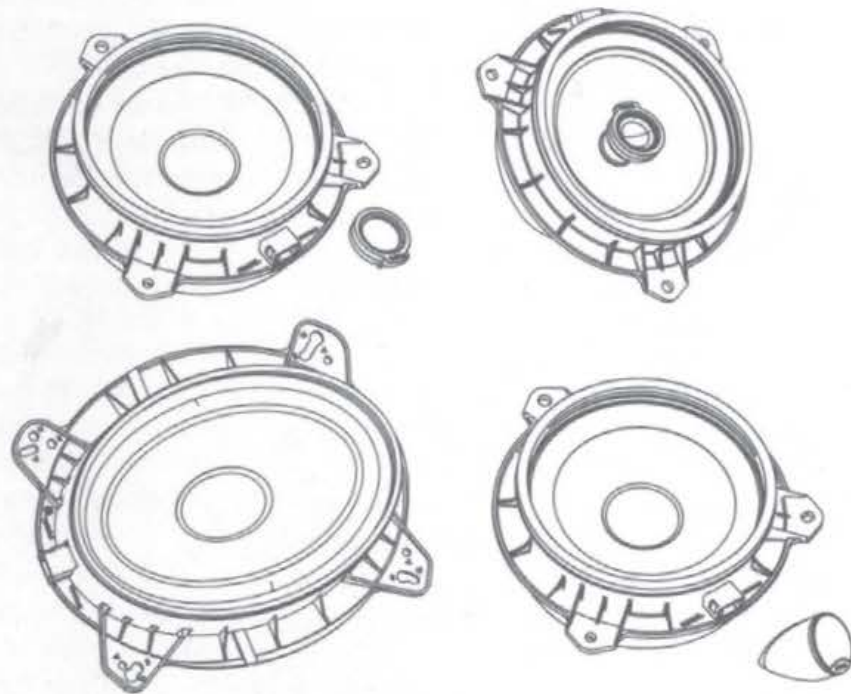


# IC TOY 165, IS TOY 165, IS TOY 690 & IS TOY 165 TWU

Manuel d'utilisation / User Manual / Gebrauchsanleitung /  
Manuale d'uso / Manual de uso / Manual de utilização /  
Handleiding / Руководство по эксплуатации /  
使用手册 / 사용 설명서 / 取扱説明書 / دليل المستخدم



Français : page 22  
English : page 24

 **FOCAL**<sup>®</sup>  
LISTEN BEYOND



**READ FIRST!**  
**IMPORTANT SAFETY INSTRUCTIONS!**



The exclamation mark represented in an equilateral triangle is intended to alert users to the existence of important instructions in the user manual relating to the use and maintenance of the device.

1. Read these instructions.  
2. Keep these instructions.  
3. Heed all the warnings.  
4. Follow all the instructions.  
5. To avoid damaging your hearing, do not listen to loudspeakers at high volumes for long periods of time. Listening to loudspeakers at high volumes can cause damage to the user's ears and may lead to hearing problems (temporary or permanent deafness, buzzing in the ears, tinnitus, hyperacusis). Exposure to excessive volumes (over 85 dB) for more than one hour can cause irreparable damage to your hearing.

6. If a subwoofer is installed in your vehicle, it is important to secure it firmly. We recommend that you attach the enclosure to the floor or chassis of the vehicle for safety. If the subwoofer is not properly secured, it could become a projectile in the event of an accident. This point is even more important if the subwoofer is installed in a hatchback, a station wagon, a utility vehicle or a van.



(CEI 60417-6044)

7. If cables or harnesses are provided, use them the proper way (like mentioned in this user manual) without replacing or modifying them.  
8. If a fuse is included in the kit or harness, use only same rating one in case of replacement.

**Vérifiez en ligne  
les compatibilités et les consignes  
d'installation mises à jour.**

**Check Online Updated  
Compatibility list  
and installation manual.**

**[www.focal-inside.com](http://www.focal-inside.com)**

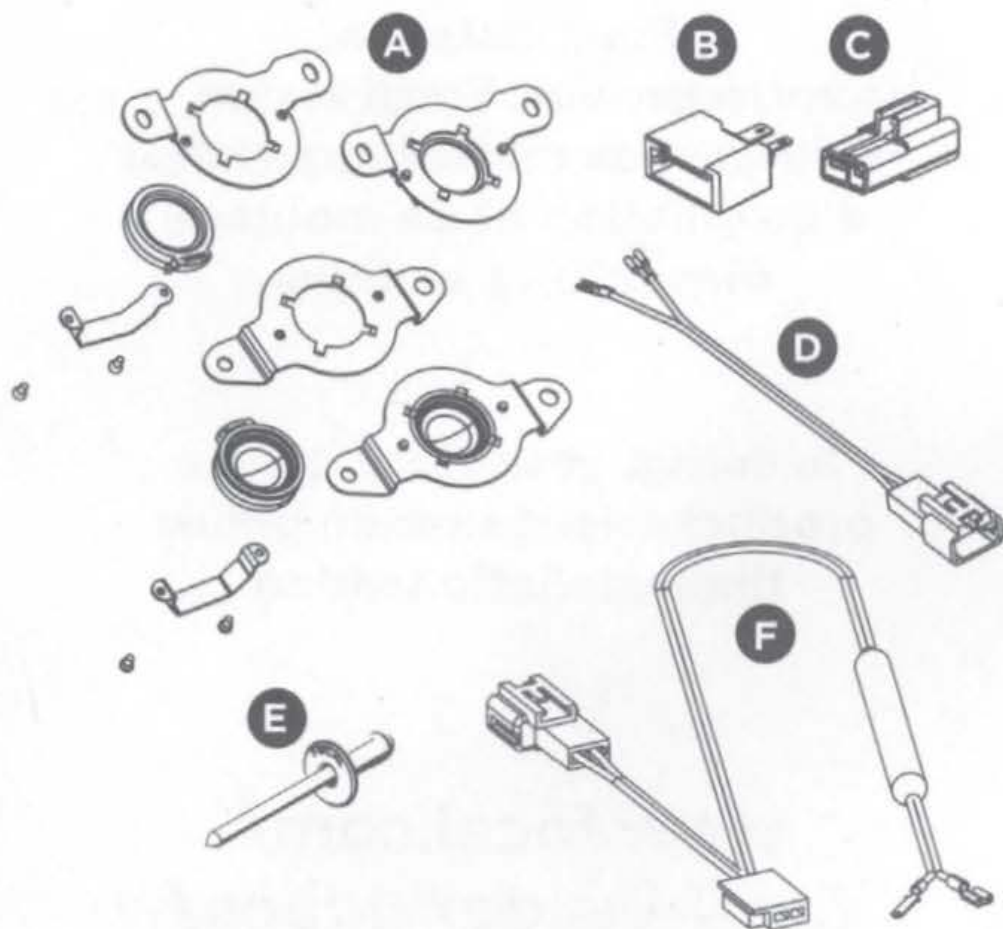


**Pour installer  
votre produit Focal Inside,  
veuillez-vous référer aux vidéos  
d'installation et de montage  
disponibles en ligne.**

**To set up your Focal Inside  
product, please watch online  
the installation video.**

**[www.focal.com/  
focal-inside/videos/](http://www.focal.com/focal-inside/videos/)**





**IC TOY 165 :**

**D** (x2) / **E** (x8)

**IS TOY 165 :**

**A** (x2) / **B** (x2) / **D** (x2) / **E** (x8)

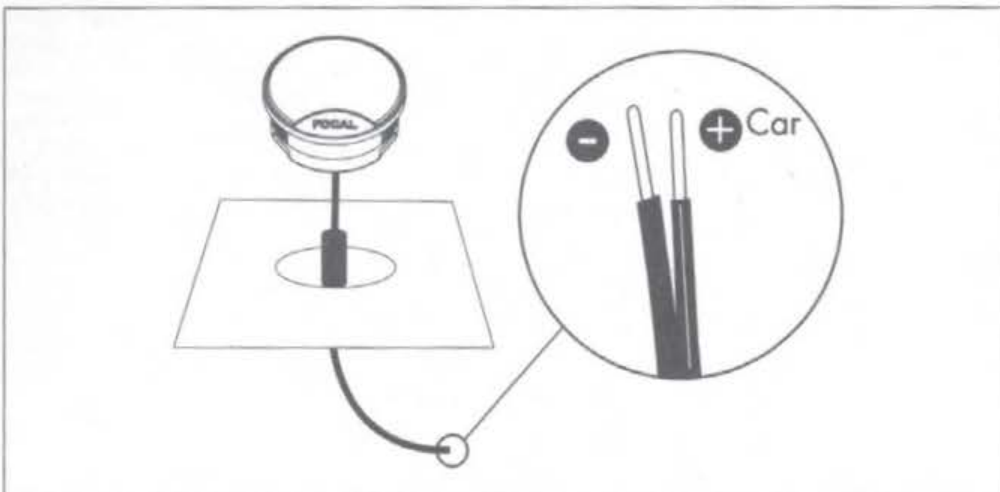
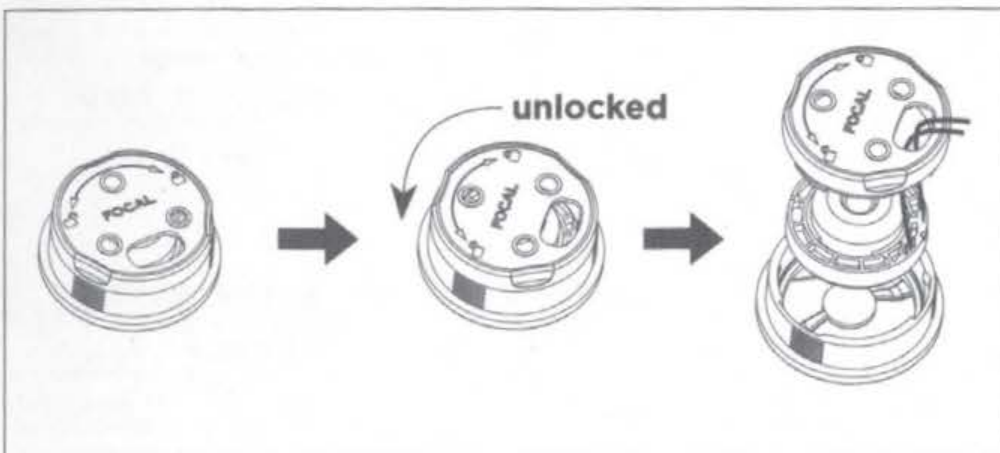
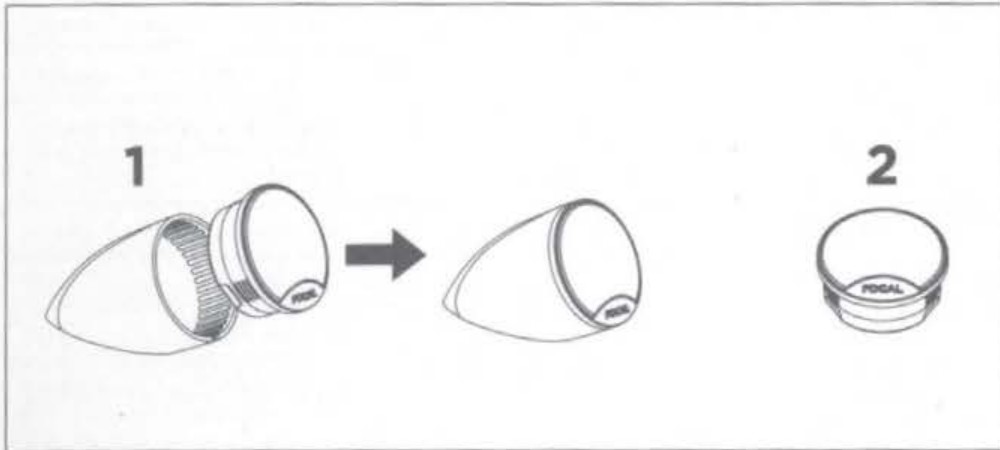
**IS TOY 690 :**

**A** (x2) / **B** (x2) / **C** (x2) / **D** (x2) / **E** (x8)

**IS TOY 165 TWU :**

**E** (x8) / **F** (x2)

Installation du tweeter TWU / Fitting the TWU tweeter



**IC TOY 165, IS TOY 165, IS TOY 690 & IS TOY 165 TWU**  
 Specifications

21

	<b>IC TOY 165</b>	<b>IS TOY 165</b>
Voice coil diameter	25 mm	25 mm
Magnet	85 x 15 mm	85 x 15 mm
Cone	Black Polyglass	Black Polyglass
Suspension	Butyl	Butyl
Nominal impedance	4Ω	4Ω
Max. power	120 W	120 W
Nom. power	60 W RMS	60 W RMS
Sensitivity (2,83V/1m)	92,5 dB	91,7 dB
Frequency response	60 Hz - 20 kHz	60 Hz - 20 kHz
Crossover	Integrated	Woofer: integrated Tweeter: on line

	<b>IS TOY 690</b>	<b>IS TOY 165 TWU</b>
Voice coil diameter	30 mm	25 mm
Magnet	90 x 15 mm	85 x 15 mm
Cone	Black Polyglass	Black Polyglass
Suspension	Butyl	Butyl
Nominal impedance	4 Ω	4Ω
Max. power	150 W	120 W
Nom. power	75 W RMS	60 W RMS
Sensitivity (2,83V/1m)	92,3 dB	91,7 dB
Frequency response	50 Hz - 20 kHz	60 Hz - 20 kHz
Crossover	Woofer: integrated Tweeter: on line	Woofer: integrated Tweeter: integrated in the harness

Please validate your Focal-JMlab warranty,  
it is now possible to register  
your product online:  
[www.focal.com/warranty](http://www.focal.com/warranty)



Thank you for choosing Focal kits IC TOY 165, IS TOY 165, IS TOY 690 & IS TOY 165 TWU and for sharing our passion for sound and for music, revealed with precision and purity: "Listen Beyond". Designed using acoustic technologies, these speakers integrate Focal's perfectionist believes, developing products with high power handling, and unrivalled sound quality. To obtain the best results from this product, we recommend that you follow carefully all the information contained in this user's manual. If not correctly followed, any fault observed may not be covered by the warranty.

#### **Conditions of warranty**

All Focal loudspeakers are covered by warranty drawn up by the official Focal distributor in your country. Your distributor can provide all details concerning the conditions of warranty. Warranty cover extends at least to that granted by the legal warranty in force in the country where the original purchase invoice was issued.

Our policy of continual product improvement means that Focal-JMlab reserves the right to modify the technical specifications of its products without notice. Product may vary from images.



**Important recommendations**

Before attempting any installation, check first how much space is available to fit the speakers into the vehicle (cf plans on the packaging), then proceed with the cutting. In the case of assembly in original location, check that there is enough space between the speaker and the protections grille.

- Ensure the speaker is clean from debris and metallic particles that may be attached (especially after drilling).
- Clean before mounting the speakers.

**Running period**

IC TOY 165, IS TOY 165, IS TOY 690 & IS TOY 165 TWU drive units use the very latest components. To ensure such complex mechanical elements work in harmony with each other, they must be allowed to function correctly in this environment. Changes in temperature and humidity are regarded as very hostile. In order to get the best of your IC TOY 165, IS TOY 165, IS TOY 690 & IS TOY 165 TWU speakers, a running-in period must be respected to ensure they are ready for this. We recommend that, once the system is ready for listening, the drive units should be run-in with medium volume setting, with music that has the full bandwidth of frequencies (sub-bass through treble). This running-in period should last for a few weeks, to gain the full potential. After which the excellent performance of your IC TOY 165, IS TOY 165, IS TOY 690 & IS TOY 165 TWU kits can be fully appreciated.

**Élimination correcte de ce produit.**

Ce marquage indique que ce produit ne doit pas être éliminé avec les autres déchets ménagers au sein de l'UE. Par mesure de prévention pour l'environnement et pour la santé humaine, veuillez le recycler de manière responsable, pour favoriser la réutilisation des ressources matérielles. Pour retourner votre appareil usé, veuillez utiliser les systèmes de retour et de collecte ou contactez le détaillant chez lequel le produit a été acheté. Celui-ci pourra procéder au recyclage du produit en toute sécurité.

**Correct elimination of this product.**

This marking indicates that within the EU this product should not be disposed of with other household wastes. To prevent any risk to the environment or human health, please recycle them responsibly to encourage the reuse of material resources. To return your used device, please use the return and collection systems available, or contact the retailer where you purchased the product. They can recycle this product safely.

**Ordnungsgemäße Entsorgung des Produkts.**

Diese Kennzeichnung weist darauf hin, dass dieses Produkt innerhalb der EU nicht mit anderen Haushaltsabfällen entsorgt werden darf. Als Präventivmaßnahme für die Umwelt und die menschliche Gesundheit muss auf eine verantwortungsbewusste Wiederverwertung zur Förderung der Wiederverwendung von materiellen Ressourcen geachtet werden. Für die Rückgabe von Gebrauchtgeräten verwenden Sie bitte zur Verfügung stehende Rückgabe- und Recyclingsysteme oder wenden Sie sich an den Händler, bei dem Sie das Produkt erworben haben. Letzterer kann das Gerät sicher dem Wertstoffkreislauf zuführen.

**Eliminación correcta de este producto.**

Este símbolo indica que este producto no debe eliminarse con el resto de residuos domésticos dentro de la UE. Con el objetivo de proteger el medioambiente y la salud pública, recicle de forma responsable para favorecer la reutilización de los recursos materiales. Para devolver su aparato usado, utilice los sistemas de devolución y recogida o póngase en contacto con el vendedor del producto. Este podrá proceder al reciclaje del producto de forma totalmente segura.

**Corretto smaltimento di questo prodotto.**

Questa marcatura indica che, nell'UE, questo prodotto non deve essere smaltito insieme agli altri rifiuti domestici. A titolo preventivo per l'ambiente e la salute, deve essere riciclato in modo responsabile per favorire il riutilizzo delle risorse materiali. Per mandare indietro l'apparecchio usato, si prega di utilizzare il sistema di reso e raccolta o di contattare il rivenditore da cui è stato acquistato il prodotto, il quale potrà procedere a riciclare il prodotto in totale sicurezza.

Pour validation de la garantie  
Focal-JMlab, il est maintenant possible  
d'enregistrer son produit en ligne :  
**[www.focal.com/garantie](http://www.focal.com/garantie)**



Please validate your Focal-JMlab  
warranty, it is now possible to register  
your product online:  
**[www.focal.com/warranty](http://www.focal.com/warranty)**



Registrieren Sie Ihr Produkt online, um Ihre Focal-JMlab-Garantie zu bestätigen:  
[www.focal.com/warranty](http://www.focal.com/warranty)

Per validare la garanzia Focal-JMlab adesso è possibile registrare il prodotto on-line su:  
[www.focal.com/warranty](http://www.focal.com/warranty)

Para validar la garantía Focal-JMlab, ahora también puede registrar su producto en línea:  
[www.focal.com/warranty](http://www.focal.com/warranty)

Para validar a garantia Focal-JMlab, agora é possível registrar um produto online:  
[www.focal.com/warranty](http://www.focal.com/warranty)

Voor garantie validatie Focal -JMlab, Het is nu mogelijk om het product online te registreren:  
[www.focal.com/warranty](http://www.focal.com/warranty)

**Для подтверждения гарантии Focal-JMlab, еперь продукт можно зарегистрировать на сайте**  
[www.focal.com/warranty](http://www.focal.com/warranty)

请于10天内寄回随附的产品质保书，使Focal-JMlab质保生效。您现在可以在线注册产品：  
[www.focal.com/warranty](http://www.focal.com/warranty)

Focal-JMlab의 개런티 유효화를 위해, 이제 웹사이트에서 제품의 온라인 저장 등록도 가능합니다 :  
[www.focal.com/warranty](http://www.focal.com/warranty)

Focal-JMlabの保証を有効にするには、現在、製品のオンライン登録が可能になりました:  
[www.focal.com/warranty](http://www.focal.com/warranty)

الرجاء تفعيل ضمان Focal-JMlab الخاص بك،  
يمكنك الآن تسجيل منتجك عبر الإنترنت على موقع:  
[www.focal.com/warranty](http://www.focal.com/warranty)



CE



Focal-JMlab\* - BP 374 - 108, rue de l'Avenir -  
42353 La Talaudière cedex - France - [www.focal.com](http://www.focal.com)  
Tel. (+33) 04 77 43 57 00 - Fax (+33) 04 77 43 57 04 -  
SCAA-190514/1 - CODO1626

# FOCAL<sup>®</sup> INSIDE IC TOY 165

2-way coaxial kit / Kit coaxial 2 voies



Plug & Play  
Easy to install



Performance gain  
Gain de performances



Detailed sound  
Son + détaillé



Max. Power  
Puissance max.



Toyota<sup>®</sup>, Lexus<sup>®</sup> and Subaru<sup>®</sup> compatible  
Compatible Toyota<sup>®</sup>, Lexus<sup>®</sup> et Subaru<sup>®</sup>

[Toyota : Prius, Tundra, Tacoma, Rav4, Corolla, C-HR... /  
Lexus : RX, CT, IS... / Subaru : Impreza IV, WRX, Forester...]

[www.focal.com/focal-inside/ic-toy-165/](http://www.focal.com/focal-inside/ic-toy-165/)



Check online your  
vehicle compatibility

Vérifiez en ligne  
la compatibilité  
de votre véhicule

[www.focal-inside.com](http://www.focal-inside.com)

Audio systems optimized for the greatest manufacturer's vehicles  
Des solutions audio conçues pour les véhicules de grandes marques

 **FOCAL**<sup>®</sup>  
LISTEN BEYOND

# FOCAL<sup>®</sup> INSIDE IC TOY 165



Check online your  
vehicle compatibility

Vérifiez en ligne  
la compatibilité  
de votre véhicule

**Toyota<sup>®</sup>, Lexus<sup>®</sup> and Subaru<sup>®</sup> compatible**

Compatible Toyota<sup>®</sup>, Lexus<sup>®</sup> et Subaru<sup>®</sup>

[Toyota : Prius, Tundra, Tacoma, Rav4, Corolla, C-HR... /

Lexus : RX, CT, IS... / Subaru : Impreza IV, WRC, Forester...]

[www.focal.com/focal-inside/ic-toy-165/](http://www.focal.com/focal-inside/ic-toy-165/)

[www.focal-inside.com](http://www.focal-inside.com)

Audio systems optimized for the greatest manufacturer's vehicles  
Des solutions audio conçues pour les véhicules de grandes marques

EAN

UPCA

KINT165C07



Serial numbers / Numéros de série



© Focal-JMlab - BP 374 - 108, rue de l'Avenir - 42353 La Talaudière cedex -  
France - 2019 - All rights reserved - Made in China.  
SCPP190724/2 - EMCA2065

Packaging content / Contenu de l'emballage



**2 x speaker**  
2 x haut-parleur

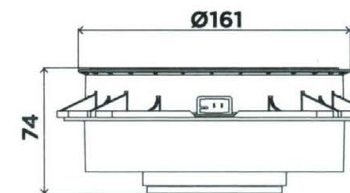
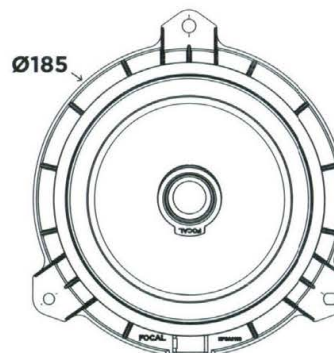


**Fixing kit**  
Kit de fixation



**Connectors**  
Connecteurs

Dimensions (mm)



**FOCAL<sup>®</sup>**  
LISTEN BEYOND

# FOCAL<sup>®</sup> INSIDE IC TOY 165

- F** Kit coaxial 2 voies, diamètre 165 mm  
Woofer : 165 mm  
Profondeur : 45 mm  
Membrane : Polyglass  
Tweeter compact à dôme inversé en Aluminium/  
Magnésium  
Puissance max. : 120 W  
Puissance nom. : 60 W RMS  
Sensibilité (2,83 V/1m) : 92,5 dB  
Réponse en fréquence : 60 Hz - 20 kHz  
(Accessoires de connexion et de fixation fournis)
- GB** 2-way coaxial kit, diameter 6<sup>1/2</sup>" (165mm)  
Woofer: 6<sup>1/2</sup>" (165mm)  
Depth: 1<sup>3/4</sup>" (45mm)  
Cone: Polyglass  
Compact inverse dome aluminium / magnesium  
tweeter  
Max. power: 120 W  
Nom. power : 60 W RMS  
Sensitivity (2.83 V/3 feet - 3.2 ft/1m): 92.5 dB  
Frequency response: 60 Hz - 20 kHz  
(Connection and fixing accessories provided)
- D** 2-Wege-Koaxialsatz, Durchmesser 165 mm  
Basslautsprecher: 165 mm  
Tiefe: 45 mm  
Membran: Polyglass  
Kompakter Aluminium-/Magnesium-Kalottenhohtöner  
Maximale Leistung: 120 W  
Nennleistung : 60 W RMS  
Kernschalldruck/Empfindlichkeit (2,83 V/1m): 92,5 dB  
Frequenzgang: 60 Hz - 20 kHz  
(Verbindungs- und Befestigungszubehör im  
Lieferumfang enthalten)
- I** Kit coassiale a 2 vie, diametro 165 mm  
Woofer: 165 mm  
Profondità: 45 mm  
Membrana: Polyglass  
Tweeter compatto a cupola rovesciata  
in alluminio/magnesio  
Potenza max.: 120 W  
Potenza nom. : 60 W RMS  
Sensibilità (2,83 V/1m): 92,5 dB  
Risposta in frequenza: 60 Hz - 20 kHz  
(Accessori di collegamento e fissaggio inclusi)
- E** Kit coaxial de 2 vías, diámetro 165 mm  
Woofer: 165 mm  
Profundidad: 45 mm  
Membrana: Polyglass  
Tweeter compacto de cúpula invertida  
en aluminio/magnesio:  
Potencia máx.: 120 W  
Potencia nom. : 60 W RMS  
Sensibilidad (2,83 V/1m): 92,5 dB  
Respuesta en frecuencia: 60 Hz - 20 kHz  
(Accesorios de conexión y fijación incluidos)
- P** Kit coaxial de 2 vias, diámetro de 165 mm  
Woofer: 165 mm  
Profundidade: 45 mm  
Membrana: Polyglass  
Tweeter compacto de cúpula invertida em alumínio/  
magnésio  
Potência máx.: 120 W  
Potência nom.: 60 W RMS  
Sensibilidade (2,83 V/1m): 92,5 dB  
Frequência de resposta: 60 Hz - 20 kHz  
(Acessórios de ligação e fixação fornecidos)
- PL** 2-drożny zestaw współosiowy, średnica 165 mm  
Woofer: 165 mm  
Głębokość: 45 mm  
Membrana: Polyglass  
Kompaktowy głośnik wysokotonowy z odwróconą alu-  
miniowo-magnezową kopułką  
Moc maksymalna: 120 W  
Moc nominalna : 60 W RMS  
Czułość (2,83 V/1 m): 92,5 dB  
Charakterystyka częstotliwościowa: 60 Hz - 20 kHz  
(akcesoria do łączenia i mocowania w zestawie)
- NL** 2-weg coaxiale kit, diameter 165 mm  
Woofer: 165 mm  
Breedte: 45 mm  
Membrana: Polyglass  
Compacte tweeter met omgekeerde koepel  
in aluminium/magnesium  
Maximaal vermogen: 120 W  
Nominaal vermogen: 60 W RMS  
Gevoeligheid (2,83 V/1m): 92,5 dB  
Frequentierespons: 60 Hz - 20 kHz  
(Accessoires voor aansluiting en montage  
meegeleverd)



# IC TOY 165

## Product Data Sheet

IC TOY 165 is designed for drivers who want to replace their original audio system with a quality sound solution. The speaker drivers integrate the Polyglass cone for defined midrange and the Aluminium inverted dome tweeter, a Focal technology allowing perfectly rendered trebles.



### Key Points

- Quick installation
- No wire to cut, no modification
- 100% compatible with your vehicle
- Sound quality superior compared to the original one
- High sensitivity allowing a significant gain while keeping the original amplification
- Mounting accessories included

Check your car compatibility at [www.focal-inside.com](http://www.focal-inside.com)



TOYOTA



LEXUS



SUBARU

[Toyota : Prius, Tundra, Tacoma, Rav4, Corolla, C-HR... /  
Lexus : RX, CT, IS... / Subaru : Impreza IV, WRC, Forester...]

Type	2-way coaxial kit
Woofer	6 <sup>1</sup> / <sub>2</sub> " (165mm)
Tweeter	Inverted dome
Voice coil diameter	1" (25mm)
Magnet	85x15mm
Cone	Black Polyglass
Surround	Butyl
Impedance	4Ω
Max. power	120W
Nom. power	60W RMS
Sensitivity (2.83V/1m)	92.5dB
Frequency response	60Hz-20kHz
Crossover	Integrated

**FOCAL**® *INSIDE*

Focal® is a trademark of Focal-JMLab® - [www.focal.com](http://www.focal.com) - SCAA190919/1

 **FOCAL**®  
LISTEN BEYOND

# IC TOY 165

Technical Sheet

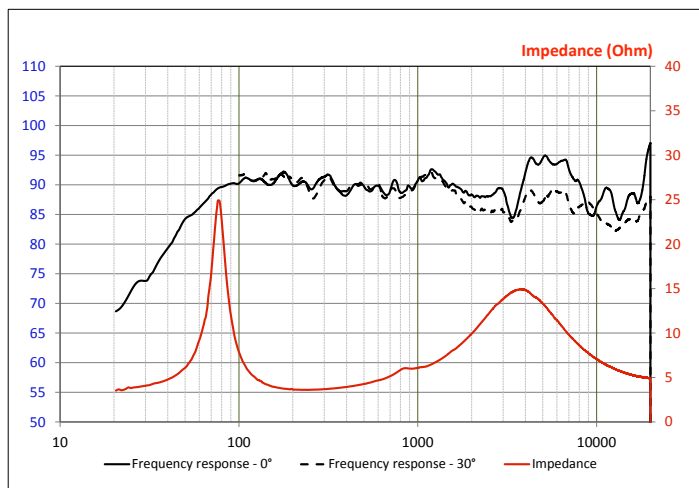
## Woofer



## SPECIFICATIONS

Nominal power	60 W
Maximum power	120 W
Sensitivity	92.5dB
Nom. impedance	4 Ω
Cone	Black Polyglass
Surround	Butyl
DC resistance	3.3 Ω
VC diameter	25 mm 1"
Former	Kapton
Layers	2
Wire	Copper
Magnet d x h	85x15mm 3 3/8 x 3/16"
Net weight	950g 2.1lbs

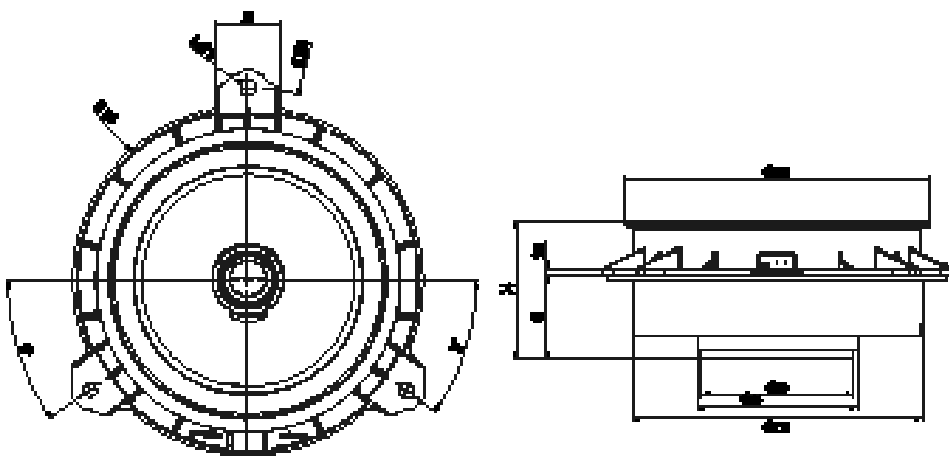
## FREQUENCY RESPONSE/IMPEDANCE



## PARAMETERS

Rdc	3.3 Ω
Fs	75 Hz
Mms	13.1 g
Cms	0.34 mm/N
Vas	9.86L
Qts	0,8
Qes	0,92
Qms	6,397
Bxl	4.7N/A
Sd	136.85 cm <sup>2</sup>
SPL	88dB
Xmax	3mm

## MECHANICAL DRAWING



**FOCAL<sup>®</sup> INSIDE**

Focal<sup>®</sup> is a trademark of Focal-JMLab<sup>®</sup> - [www.focal.com](http://www.focal.com) - SCAA190919/1

**FOCAL<sup>®</sup>**  
LISTEN BEYOND