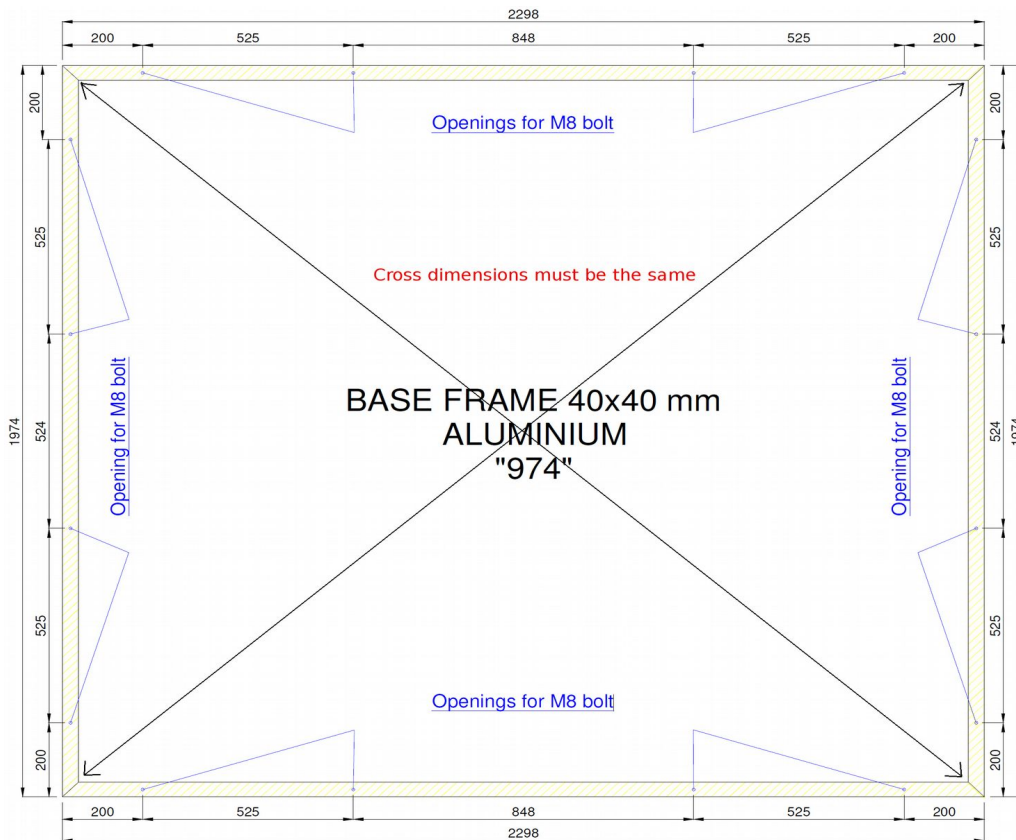


Assembly instructions

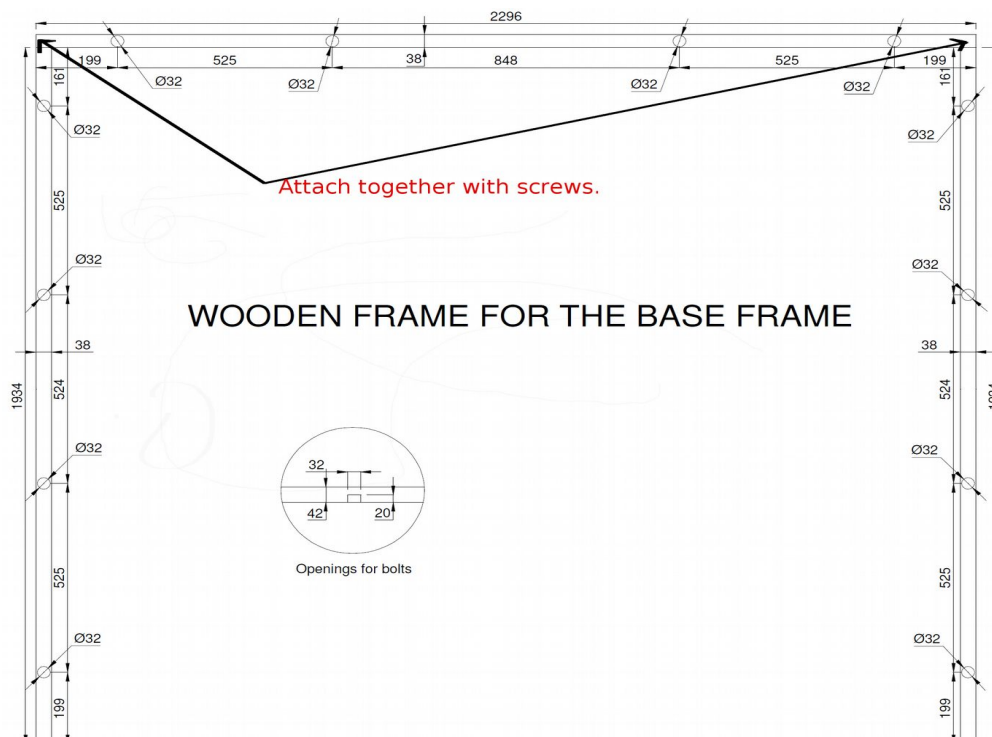
NL2320 Deco outdoor sauna



Aluminium base frame is placed on the floor. Fasten the corners together with screws (4x30 mm). Cross-measure from the corners to check that they are at straight angle. Check that the base frame is level using a spirit level. Base frame should be anchored on the floor with M8 anchors. Make sure you have enough room for the roof on the right side, against the barbecue house. (c. 30 cm)



After aluminium base frame is anchored, the aluminium or wooden frame is screwed on top of the aluminium frame.



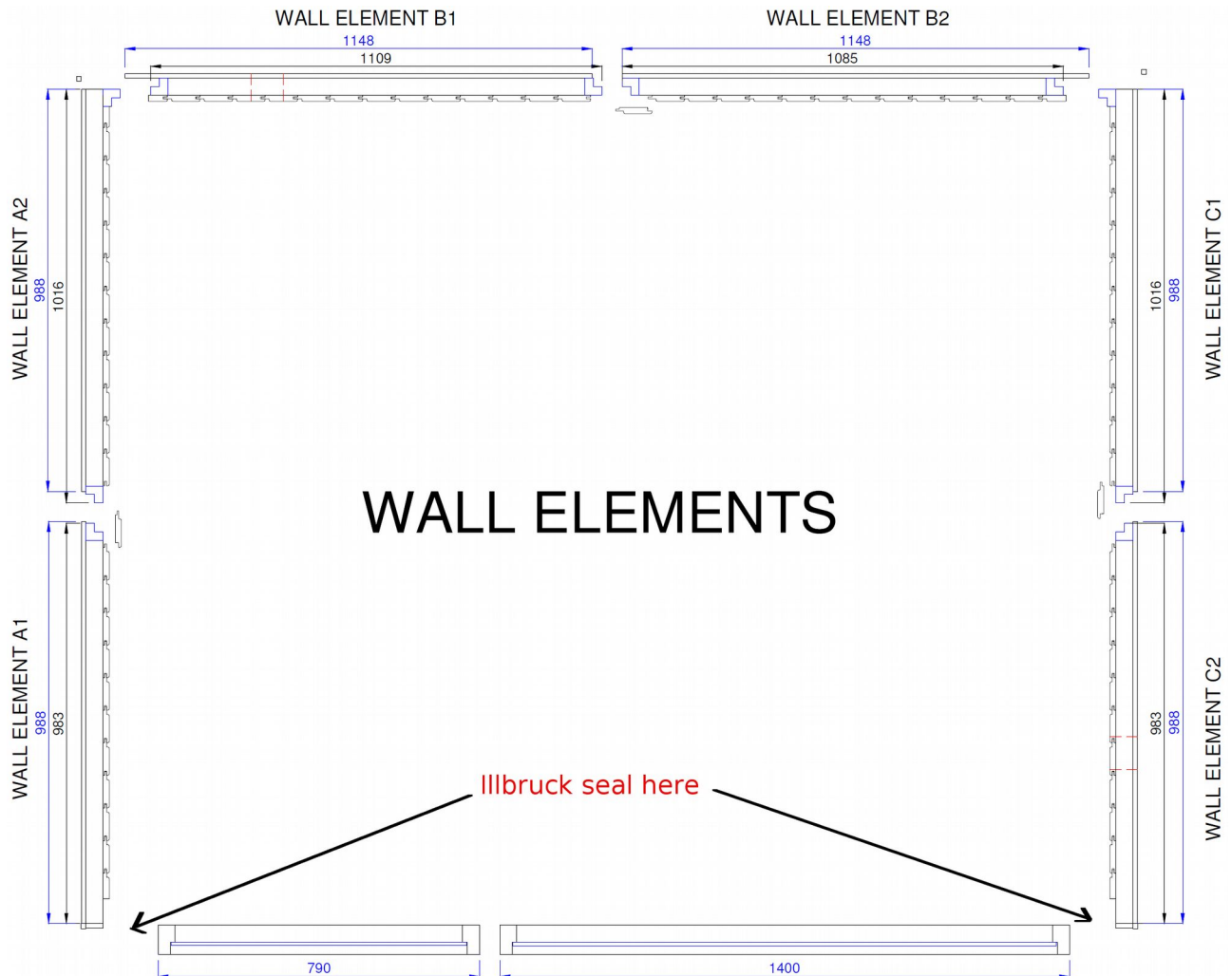
Wall elements

They are installed on top of the base frame.

Start from the corner, the element marked B1 and attach with A2, using screws.

Be careful with the wall surface plate, not to crack it when moving the walls. The door is last one.

Between the exterior wall surface plates are aluminium joining profiles. Be careful with them.



<https://www.youtube.com/watch?v=Eu60czCx-fY>

Illbruck seal is a tape that is placed with its own sticky surface on the edges of the sauna. Cut with boxcutter knife.

Place seal material Illbruck tape in the gap between the window and right wall, and then on door and left wall. Not yet on the top or bottom side of the door, only in the gap between door and window. Two rolls are included.

The tape will swell up and become thicker, and will fill up the gap. This can take 2 hours.

Door

Be careful when handling the door as the window may break if it is hit with a sharp object. The door element is the last wall element. The door is fastened with screws (5x70 mm). The door always opens out. Note that hinges are on the left side.

Put 50 mm screws horizontally at the bottom of the walls, from inside, to the wooden floor frame. Thus anchoring the walls in place to the frame.

Sauna inner roof elements.

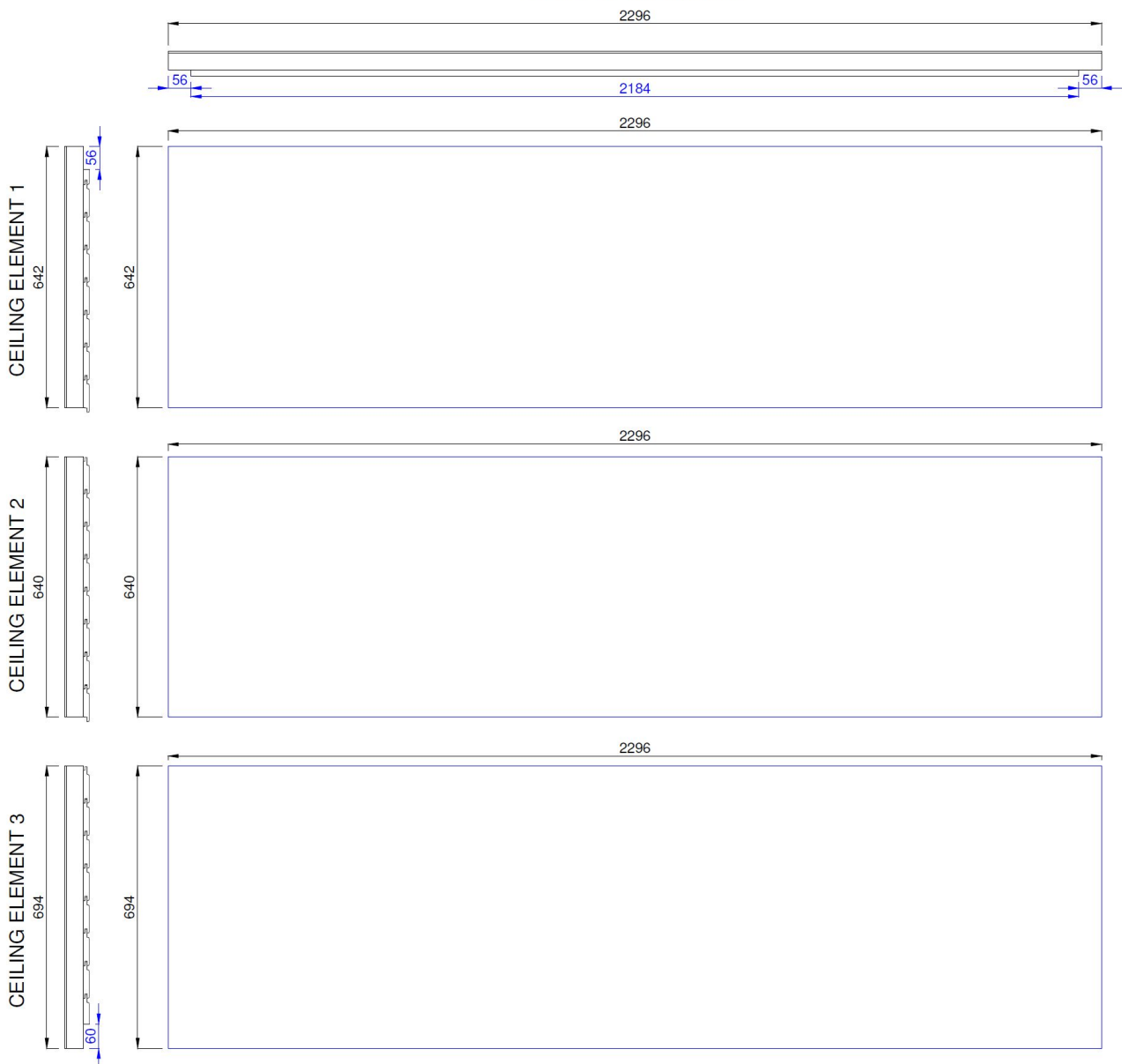
Now place Illbruck seal tape on top of window and door.

Lift the ceiling elements on the walls. One person should be inside the sauna and another outside, feed the ceiling panel over the top of the walls, be very careful not to scratch the panels. You may need to push the walls a bit, so the ceiling elements fall in place.

Attach the ceiling elements to the walls with screws (5x120 mm). And to the door and window with 70mm.

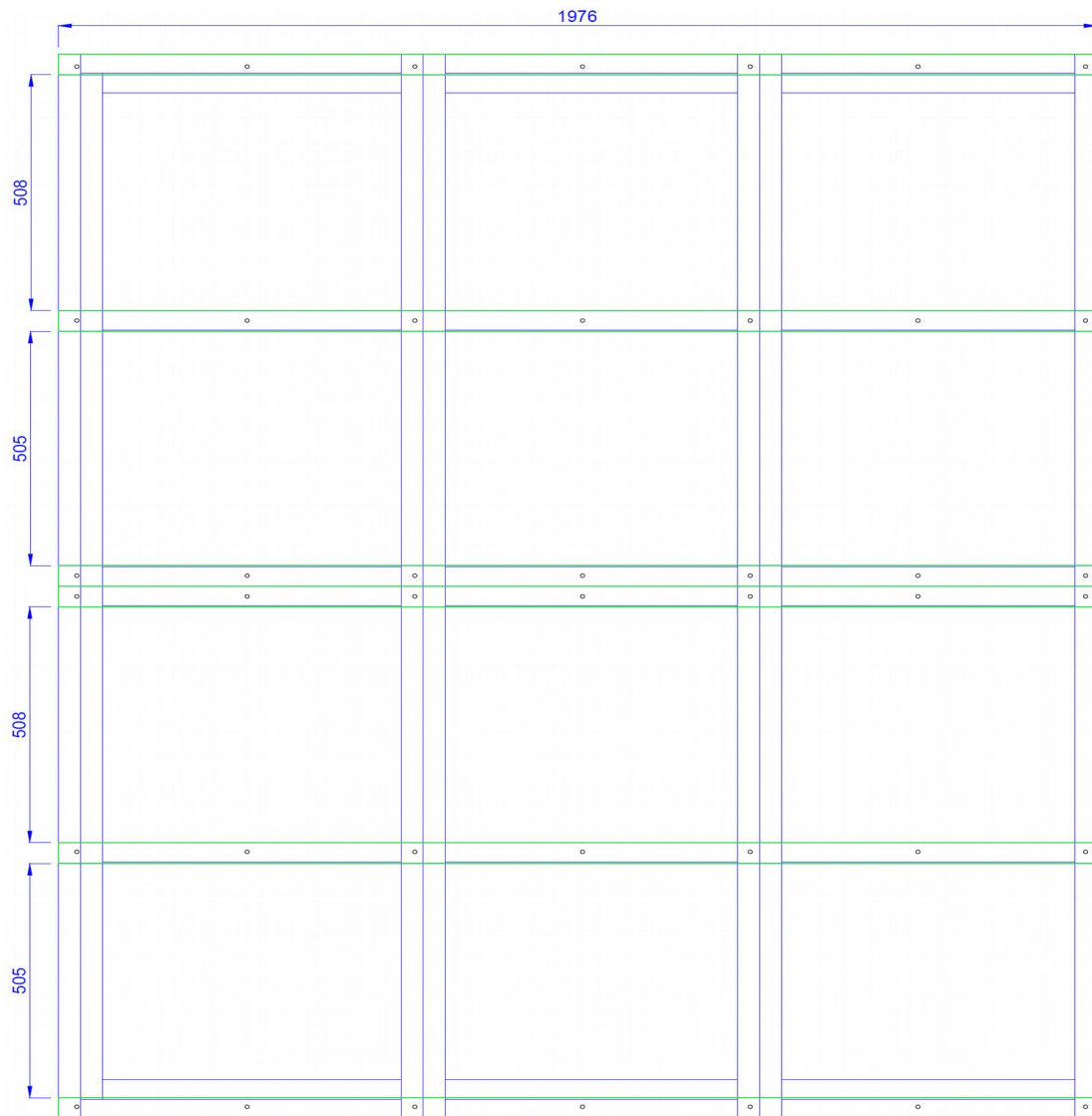


CEILING ELEMENTS



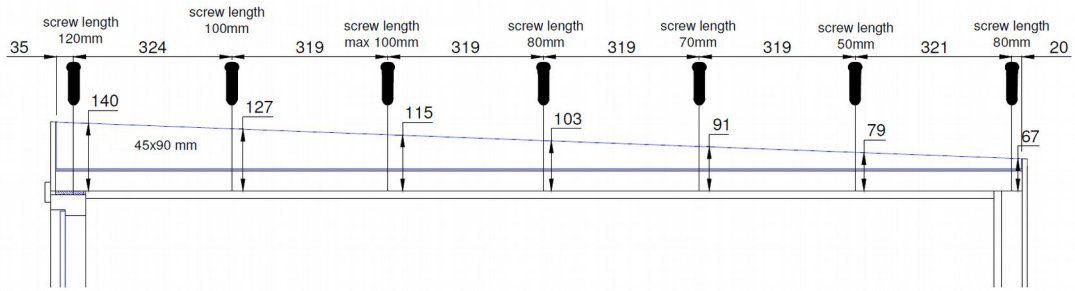
ROOF

First, place the roof rafters on top of the ceiling elements. In the middle and on sides of the roof. Screw in place with correct length screws, as shown in the picture on next page. Here the the front of the sauna is on the left, and the green pieces are the rafters.

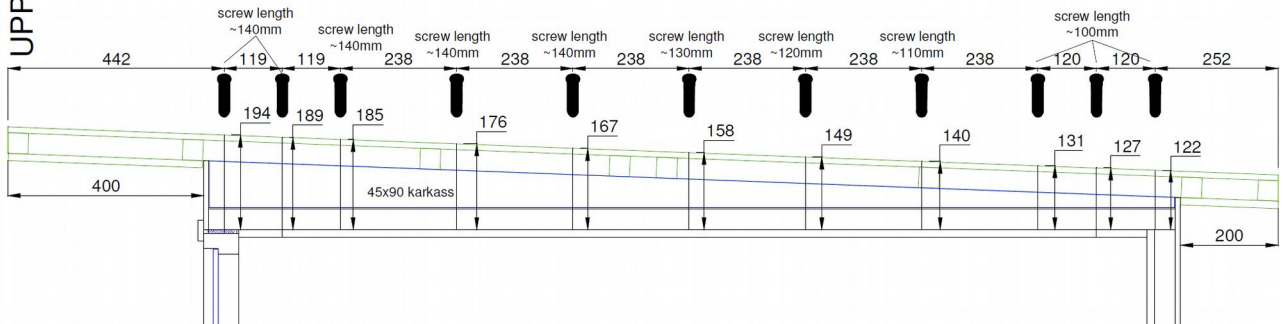


Here are the screw lengths:

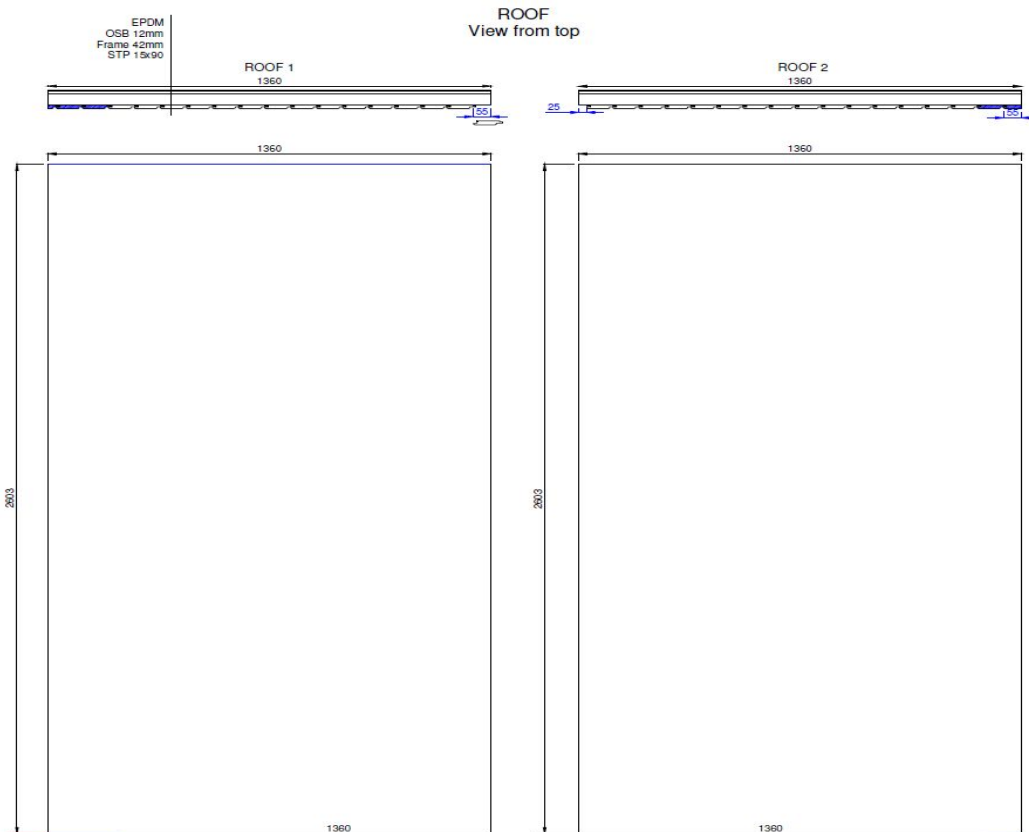
UPPER END OF THE ROOF



Roof to be mounted on the ceiling



Roof in 2 parts. Lift up the roof parts. Screw them in place with right length screws to the rafters.



Attach the white metal edges on the roof.

Then, **place rubber cover on the roof**, according to instructions, and as in the video.

<http://www.youtube.com/watch?v=6cLZy3MkADs>

Electrical wires

The connection box is placed on the center of the right side wall, c. 15 cm from the floor. Electric main line coming to the sauna must be connected into this box.

The sauna lamp is placed in the right back corner, c. 130 cm from the floor. The lamp cable should be installed, but the lamp itself is easiest to install after the benches are in place.

The sauna heater (Sawo TH6-105Ni-P, 10,5kW, 380V 3-phase) cables are installed behind the heater, and connected to the connection box.

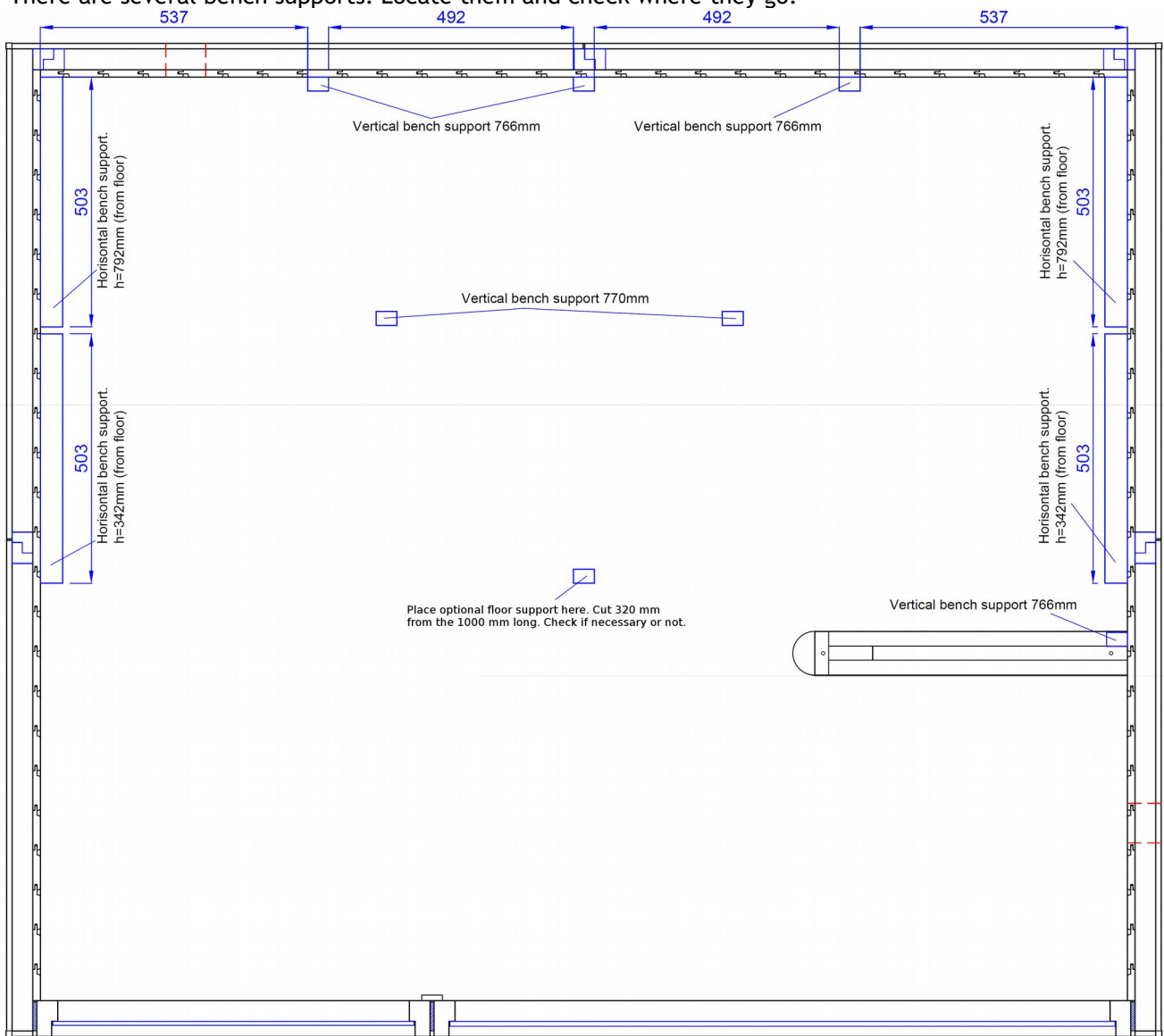
The sauna lamp light switch is to be decided and installed by the local electrician.

Inside and Outside trim and mouldings

The outside corners of the sauna have aluminium L-profile mouldings as covers. Around the door and window are trims to cover the attachment joints. The trims are attached with nails. Install the door handle.

Sauna Benches:

There are several bench supports. Locate them and check where they go.



- * Place vertical 766 mm supports so that their bottom is at the same level as wall paneling bottom.
- * Attach 2 horizontal 503 mm supports on the side walls so that they are 4 mm from back wall and their surface is 832 mm from the bottom of the wall paneling.
- * For lower bench, attach 2 horizontal 503 mm supports on the side walls 510 mm from the back wall, their top 412 mm from the bottom of the wall paneling.

Take off the surface grid from the benches, and install just the bench frames. Start with installing the upper bench frame.

Fix the bench support elements with screws 5x70 mm.

Place 1390 mm long upper bench frame on the supports, push against the back left corner, and attach one screw 70 mm long through the bench frame to the left wall.

Place curved corner frame on supports, and connect with 3 screws the frames together. Attach with screws to the back wall and to the right wall.

Place short upper bench frame and attach with 3 screws to the curved corner frame. Screw to the wall.

Place lower bench frame on top of its supports.

Attach the bench-end handrail. Screw to the upper bench frame.

Place the lower bench against the handrail and screw to the walls on left and right. Use 3-4 screws on both sides.

Now add screws to the upper bench frame, 3 screws to the left, 3 to the right.

Put only lower bench surface in place.

Bench skirts

Attach the bench skirts with screws to the behind of the upper bench front edge. Check that they are exactly horizontal.

Now add upper bench surfaces.

Backrests

Install the lamp behind the curved backrest. Place corner backrest and attach with screws. Leave a gap of 2 cm in the bottom to the bench surface, so that the surface can be raised out. Try what is a good height, so that the surface grid can be raised out from under the backrest.

Install the straight backrests on both sides, with their top edge c. 50 cm from the bench surface.

Place floor grids on the floor.

Place the thermometer in a visible place on the wall, normally c.15 cm from the ceiling.

Place rocks carefully in the heater. Do not stuff the heater too tightly with rocks, as there must be space for air to pass between rocks.

The first time the heater is tested and heated, it is normal for some storage grease to burn off and to have some smoke.

Read the instructions of the heater for its operation.

