



SS20 JANUARY | NEW AGE

New Year and a chance to reset your body, mind, and closet! A ***cleansing neutral palette*** helps you ease into the year ahead. Prints are east to wear, and ***inspired by jacquard textures*** you would find on the runway.

With the new year, we bring in ***new age touches*** of soft stretchy fabrics that feel like you are among the clouds, ***organic shaped cutouts*** for dynamic outfitting, & hits of ***space age metallic***. Get ready to shine in more ways than one. Elongated silhouettes featuring debossed DEFINE elastic will create a new sensational experience in your studio practice. We kept the styling & color palette tight so you can mix and match just about everything. We encourage the ***mix of studio to street***, high low styling.

ONLINE ONLY / ATS STYLES - Please inquire for wholesale costing if interested.
Note, stock is not guaranteed.



MIST GREEN
13-6110 TCX



BLACK
19-3911 TCX



SHARKSKIN
17-3914 TCX



H. GREY



WHITE
11-0601 TCX

HOUSTON OFFICE WHOLESALE MANAGER

Brooklynn Morrow
wholesale@shopdyi.com
832.649.5970

SOUTH

Donna Abate Bohannon
donna@shopdyi.com
713.416.8990 - cell
832.831.3092 - office

FLORIDA

Cristina Newlin
cnewlinsales@gmail.com
561.723.5988

WEST COAST

Harmony Hillier
harmony@shopdyi.com
562.652.4711

CENTRAL

Avery Honigblum
avery@shopdyi.com
214.310.7774

SS20 JANUARY | KEYLOOKS

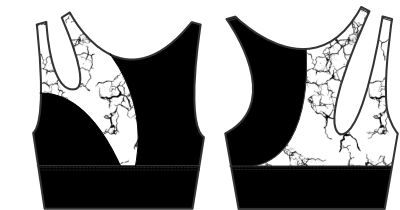
DYISPORT -----> DYI *homewear* -----> DYI STREET



+ Fleece Option

SS20209 - DYNAMIC BRA

Mid support asymmetric bra for the girl who is not afraid to stand out. No elastic longline band for comfort and coverage.
\$32 | \$64



BW Granite

⌘ Bionic : 81% Polyester, 19% Spandex

SS20101 - DYNAMIC TIGHT

Signature fit refreshed with blocked panels for a new look in the New Year. Back waist panel transitions into a drop in pocket for your phone and other essentials.
\$44 | \$88

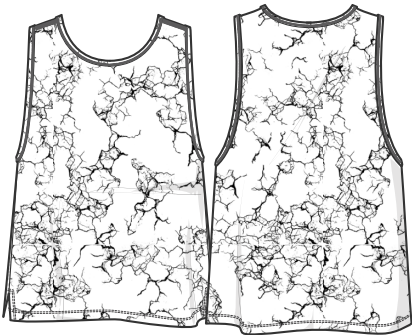


BW Granite

⌘ Bionic : 81% Polyester, 19% Spandex

SS20235 - ENDURANCE TANK

Light & loose, relaxed fit makes this an easy throw on for sweaty sessions. Cropped to sit above the hip.
\$29 | \$58

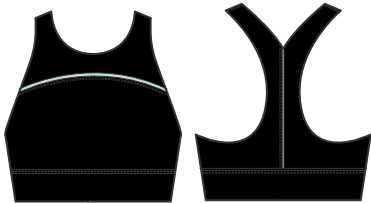


BW Granite

Barely There: 91% Nylon N6U, 9%Spandex

SS20208 - ENDURANCE BRA

Mid support high neck bra with deep v at back encouraging all movements. Piping detail to frame your features while elastic band provides soft coverage as it holds everything in place.
\$32 | \$64

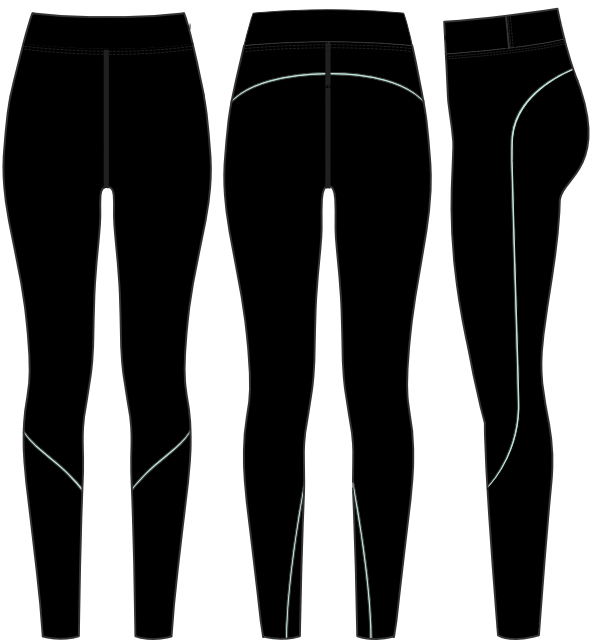


BW Mist Green

⌘ Bionic : 81% Polyester, 19% Spandex
+ elastic band + Piping

SS20102 - ENDURANCE TIGHT

A new feeling of support in a high rist tight. The same coverage but with a soft, thin, elastic waistband to ensure nothing moves around while you hit the studio. Piping to frame and feminize making it easy for instructors to keep you in proper alignment.
\$44 | \$88



BW Mist Green

⌘ Bionic : 81% Polyester, 19% Spandex
+ Elastic Waistband + Piping

SS18201EDGE- ELEVATE BRA

Long line, DYI eessential is back. No elastic straight straps, & minimal seam detail give you freedom and comfort for any movement.

\$32 | \$64

FOIL



Onyx

Bionic Edge: 69% Nylon, 31% Spandex

SS19217EDGE - ELEVATE RACER

Long line, DYI essential takes on a new look with this easy to wear racer back shape. No elastic and minimal seam details.

\$32 | \$64

FOIL



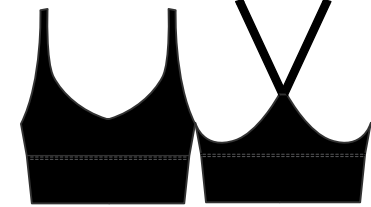
Space Age

Bionic Edge: 69% Nylon, 31% Spandex

FW19223 - VNECK ELEVATE BRA

Long line, DYI essential finds another way keep you feeling fresh. Vneck front & strappy back provide more opportunities for layering under your favorite tanks.

\$32 | \$64



Black

88% Bionic : 81% Polyester, 19% Spandex

PRINTED SIGNATURE TIGHT

Our most versatile tight and a DYI Essential piece. The everyday tight, made with our soft, cotton-like stretch compression fabric in easy to wear prints and textures. Trust us, you wont want to take these off! (27")

\$41 | \$82

105EDGE



FOIL

105EDGE



FOIL

105EDGE



105P



105P



105P



Onyx | Space Age | Digital Touch

Bionic Edge: 69% Nylon, 31% Spandex

Concrete Chevron | Black Photo Tie Dye | Dark Leopard

88% Bionic: 81% Polyester, 19% Spandex

FW19221 - HIGH NECK ELEVATE RACER

The familiar feeling of our favorite Elevate Bra but with a high neck and longer underbust for more coverage

\$32 | \$64



Black

88% Bionic: 81% Polyester, 19% Spandex

SS20236 - VNECK ELEVATE HIGH SHINE BRA

Long line, DYI essential finds another way keep you feeling fresh. Vneck front & strappy back provide more opportunities for layering under your favorite tanks. Exterior in high shine.

\$32 | \$64



Sharkskin Camo

🌀 Brazen: 80% Nylon, 20% Spandex

FW19303 - LOST IN SPAC(ER)

An easy to wear mock neck in our buttery spacer fabric. Loft helps maintain warmth but opaque mesh panel in the back helps for breathability making this the best apres workout layer.

\$38 | \$84



Black | Black Moss

Cloud9: 72% Polyamide, 28% Elastane + Spacer Mesh

120 - HIGH SHINE SIGNATURE TIGHT

Made of our exclusive Brazen fabric- stretchy, lightweight, & gives off a subtle shine. A perfect transition piece from studio to street (27")

\$41 | \$82



Sharkskin Camo | Black

🌀 Brazen: 80% Nylon, 20% Spandex

105- TAKE CONTROL TIGHT

Solid DYI essential, the Take Control Tight! This tight features the signature tight fit that you love, in our high performance Bionic fabric. The high waist holds you in all the right places, while no elastic gives you freedom of movement (27").

\$41 | \$82

CORE - XL AVAILABLE



Black

🌀 Bionic: 81% Polyester, 19% Spandex

SS20334 - ON THE RUN JACKET

Our new friend, body skimming performance jacket perfect for keeping you outdoors when the temperature drops. Hidden mesh panel in the back for controlled ventilation. Concealed zipper pockets for secure storage, and low profile thumbhole so you can keep those sleeves in place. Peplum high low hem at the back provides more coverage where needed. Reflective hits to keep you visible during nighttime adventures.

\$38 | \$84



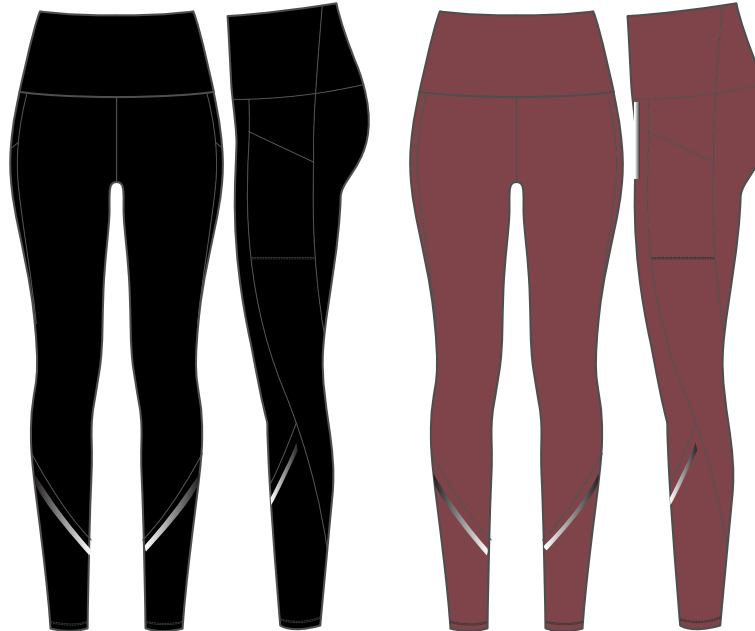
Nightfall Black SD

Tech Jersey Moss: 85% Polyester, 13% Spandex

SS20125 - ON THE RUN TIGHT

Don't be afraid of the dark in this tight designed for outdoor adventures. Drop in pocket for phone storage & reflective hit on calf to keep you visible. Made in our ultra light, yet ultra opaque fabric. This tight won't weigh you down.

\$44 | \$88



Black | Crimson

Bionic Edge: 69% Nylon, 31% Spandex

FW19310 - INNER FLEECE JACKET

Be prepared for dropping temps in our cozy tech fleece jacket. Soft brushed interior keeps you warm and cozy from errands to outdoor adventures but still has wicking abilities to keep you dry. Hidden mesh yoke panel for controlled ventilation at back. Concealed pockets for secure storage. Low profile thumbhole to keep your sleeves down & back peplum shape to provide coverage where needed.

\$38 | \$84



Black | Pinecone

Bionic Tech Fleece: 82% Nylon 18%Spandex

FW19107 - INNER FLEECE TIGHT

Be prepared for dropping temps in our cozy tech fleece tight. Soft brushed interior keeps you warm and cozy from errands to outdoor adventures but still has wicking abilities to keep you dry. Side drop in pocket allows for easy access to your phone while on the go (27")

\$48 | \$99



Black | Pinecone

Bionic Tech Fleece: 82% Nylon 18%Spandex

SS20200 - EASY RACER

Easy fit racer back tank - smooth fit around neck and chest before relaxing at hip for the perfect fit. Feel covered through the armhole and still feminine with scoop neck and curved hem. Classic silhouette can be worn in the studio or out on the town in our stretch jersey.

\$21 | \$42



White | H. Grey | Black
Jersey: 100% Cotton

SS20201 - MODERN MUSCLE

Relaxed fit muscle tank - coverage through the chest but a slightly lower armhole to show off the top of your favorite bra. Body fits relaxed through the chest, waist, and hip. Designed for our studio to street, stretch jersey.

\$21 | \$42



White | H. Grey | Black
Jersey: 100% Cotton

SS20204 - EASY CREW

Easy fit crew neck tee - smooth fit around neck and chest before relaxing at hip for the perfect fit. Curved hem for a bit more coverage. This classic silhouette can be worn in the studio or out on the town in our stretch jersey.

\$22 | \$44



White | H. Grey | Black
Jersey: 100% Cotton

SS20203 - EASY VEE

Easy fit vneck tee - smooth fit around neck and chest before relaxing at hip for the perfect fit. Curved hem for a bit more coverage. This classic silhouette can be worn in the studio or out on the town in our stretch jersey.

\$22 | \$44



White | H. Grey | Black
Jersey: 100% Cotton

SS20206 - CROP TEE

Relaxed fit cropped tee. Dropped armhole and no shaping through body makes it great for oversized layering. Cropped length hits at top of DIY high rise. (19")

\$22 | \$44.

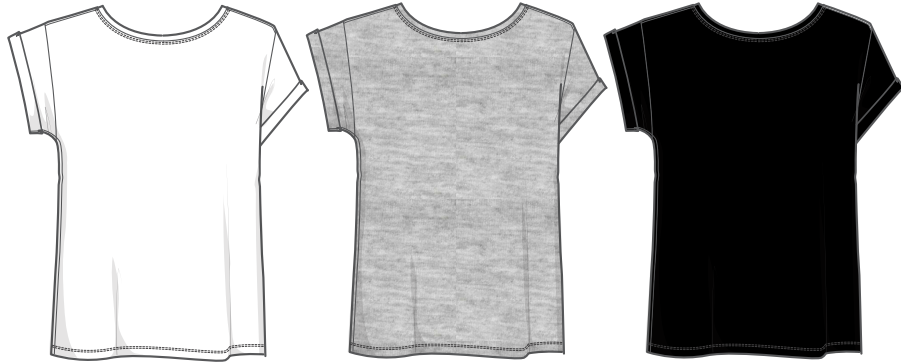


White | H. Grey | Black
Jersey: 100% Cotton

SS20205 - BOYFRIEND TEE

Relaxed fit through body and sleeves for that lived-in feel of your favorite tee. Dropped armhole with secured rolled cuff for a bit more attitude. Designed for movement in our stretch jersey.

\$22 | \$44.



White | H. Grey | Black
Jersey: 100% Cotton

SS20317 - RELAX LS

Relaxed fit body that lets you move with side split detail. Dropped armhole for comfort. Designed for movement in our 4 way stretch jersey.

\$25 | \$50



Soul Time | White | H. Grey | Black
Jersey: 100% Cotton

SS20207 - SUNRISE FLOW TUNIC

Ultra relaxed fit, elbow length tunic top. Open scoop neck for a feminine feel as A-line silhouette opens up towards hem. Longer length for bum coverage with leggings.

\$24 | \$48



White | H. Grey | Black
Modal Jersey: 92% Modal, 8% Spandex

SS20300 - POCKET LS

Relaxed body with slim fit sleeves, this long length top will be your best friend apres studio or for weekend adventures. Designed for movement in our stretch jersey.

\$25 | \$50



White | H. Grey | Black
Jersey: 100% Cotton

SS20302 - CROP SWEATSHIRT

Relaxed fit crop pullover with banded hem for a smooth, slim fit at high hip. Roomy sleeves with ultra low armhole to embrace your movements. Cover up in style in our soft stretch french terry.

\$30 | \$60



Black

Soft French Terry: 95% cotton 5% Spandex

SS20303 - CROP HOODIE

Relaxed fit hoodie gives any outfit some attitude. Cozy hood and cropped length in our favorite soft, stretch french terry

\$30 | \$60.



Black

Soft French Terry: 95% cotton 5% Spandex

SS20304 - MOCK SWEATSHIRT

Relaxed fit, pullover with long length for more coverage through the bum & hips. Mock neck gives this piece a dressed up feel, while stretch french terry cozies up to your skin. As a bonus...look for pockets.

\$32 | \$64



Black

Soft French Terry: 95% cotton 5% Spandex

SS20301 - BASIC CREW

Relaxed fit crew is an everyday essential layer sitting nicely at hip length. Designed for movement in our soft, stretch french terry

\$29 | \$58



Black

Soft French Terry: 95% cotton 5% Spandex

SS20306 - MODERN COVER UP

Let's get comfortable dressing up! Atmospherically soft , stretchy spacer cascades to compliment any layer. Pockets included or the girl on the go.

\$84

XS/S M/L



Black

Naturals Spacer: 92% cotton, 3% poly, 5% spandex

SS20321 - MINDFUL LS

Tunic long sleeve features oversized fit so you can get cozy after a long day. Plush interior is soft against the skin and flowy body does not restrict.

\$70



Black Spacedye

Sweater knit: 51% Rayon, 47% Polyester, 2% Spandex

SS20309 - MINDFUL DRESS

Cozy rib knit reaches great lengths in our dress. Slit up one side so movement wont be a problem. Wear it alone, or pair with your fave tights.

\$84



Black Spacedye

Sweater Knit: 51% Rayon, 47% Polyester, 2% Spandex

FW20333 - TWIST ABOUT LS

Twist and turn freely, this top was designed to be worn two ways. Twist at the front or twist at the back, you choose!

\$35 | \$70



REVERSIBLE!

Black

Waffle: 67% Viscose, 30% Micro Modal, 3% Spandex

FW19315 - SPLIT BACK WOVEN SHIRT

Stretch woven with wicking to keep you feeling crisp and clean in the office. Split back keeps the back interesting while providing ventilation.

\$35 | \$77



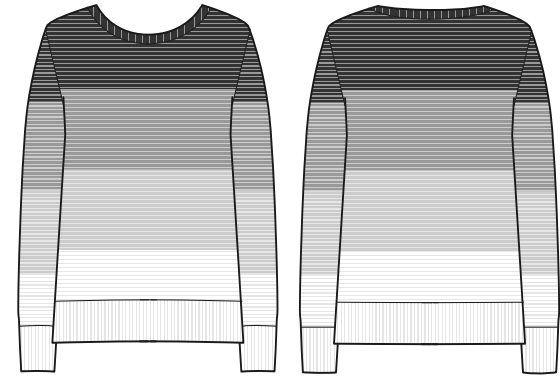
White | Moss | Black

Stretch Tencel Woven: 73%Tencel, 24%Polyester, 3% Spandex

SS20323 - OMBRE PLUSH SWEATER

Soft and cozy hairy yarns knitted into this easy pullover cover up. Ombre pattern is an easy to wear, update to our clean slate palette.

\$75



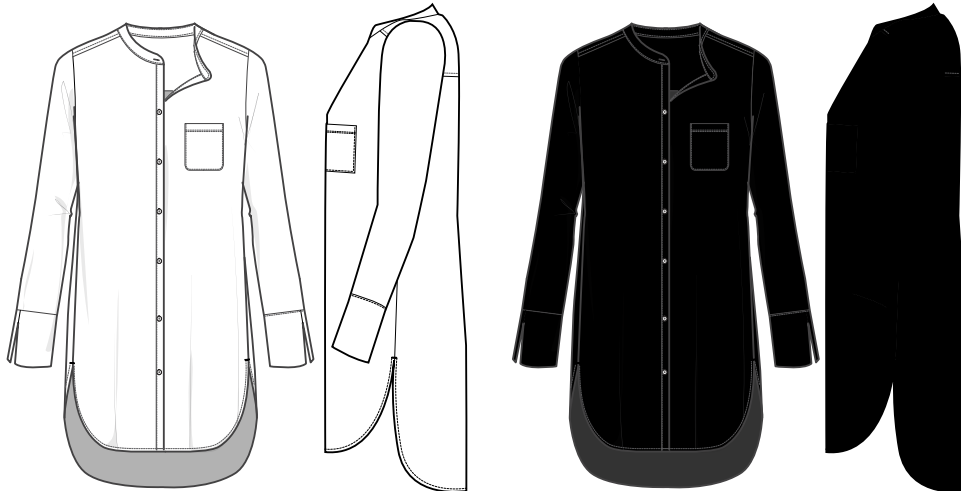
BW Ombre

Mohair Like Sweater

FW19302 - BUTTON FRONT TUNIC

Looking for a work appropriate look after your sweat sesh? Look no further than our woven tunic. Long Length and curved side hem so you feel feminine and covered if you choose to stay in your tights all day!

\$35 | \$77



White | Black

Stretch Tencel Woven: 73%Tencel, 24%Polyester, 3% Spandex

SS20103 - HIGH RISE PONTE PANT

DYI high rise in a straight leg pant. Provides held in feeling through the tummy like your favorite tights, but relaxes through the leg. Front pintuck elongates the leg and gives subtle texture to your street look(25")

\$85



Black

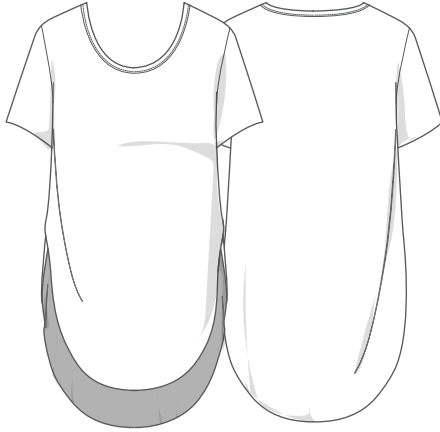
Ponte: 56% Cotton, 44% Polyester

FW19217 - OVERLAP TEE

Two looks, one tee. Long length with overlap at the side so getting a move on won't be a problem. Double face fabric so it can be worn inside out when a new color is needed.

\$39 | \$78

REVERSIBLE
INSIDE OUT



REVERSIBLE
INSIDE OUT



White Dew | Black Navy

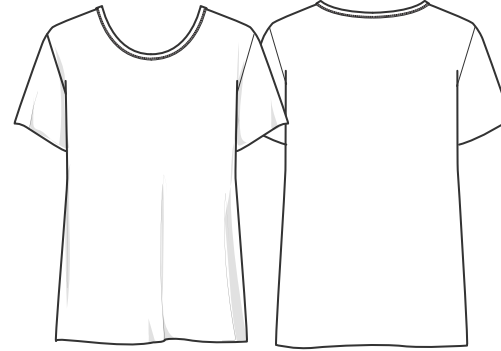
Beauty Fiber: 24% Nylon, 61% Viscose, 15% Spandex

FW19201 - DOUBLE TIME TEE

Two looks, one tee. Don't think twice in adding this to your closet. Tee designed with double face fabric so you can wear inside out to feature a different color option. Free cut hems so it is a no brainer for layering in 'sweater weather.'

\$39 | \$78

FRONT SIDE



REVERSE *INSIDE OUT



White Dew

Beauty Fiber: 24% Nylon, 61% Viscose, 15% Spandex

FW19320 - OVERLAP LS

Two looks, one top. Long length with overlap at the side so getting a move on won't be a problem. Double face fabric so it can be worn inside out when a new color is needed. Slim long sleeve for when cool weather hits.

\$39 | \$78

FRONT SIDE



REVERSE *INSIDE OUT



Black Navy

Beauty Fiber: 24% Nylon, 61% Viscose, 15% Spandex

SS19101 - CIRE STREET PANT

This tapered knit trouser brings comfort into the workplace. Find our stylish staple now offered in a faux leather 4 way stretch fabrication that bridges the gap into your happy hour endeavors.

\$48 | \$99



Black

Max Cire: 83% Polyester, 17% Spandex



WWW.SHOPDYI.COM

@SHOPDYI | #WHATMOVESYOU

**HOUSTON OFFICE
WHOLESALE MANAGER**

Brooklynn Morrow
wholesale@shopdyi.com
832.649.5970

SOUTH

Donna Abate Bohannan
donna@shopdyi.com
713.416.8990 - cell
832.831.3092 - office

FLORIDA

Cristina Newlin
cnewlinsales@gmail.com
561.723.5988

WEST COAST

Harmony Hillier
harmony@shopdyi.com
562.652.4711

CENTRAL

Avery Honigblum
avery@shopdyi.com
214.310.7774