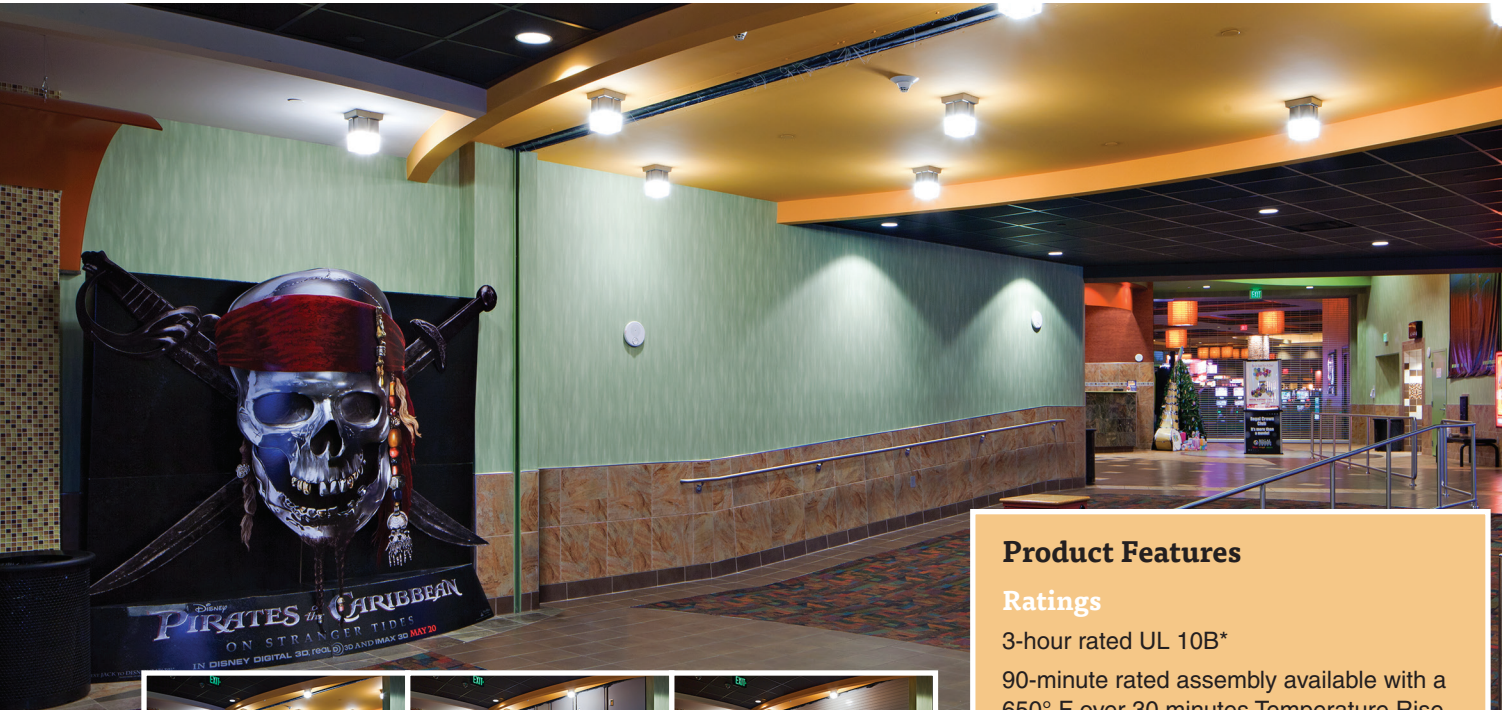


VERTICAL ACTING FIRE DOOR SYSTEMS



Safescape® T5000 Series

Vertical Coiling with Fixed Egress

The Safescape® T5000 fire and smoke rated door assembly is designed to coil at the top allowing the rigid bottom frame with fixed swinging egress doors to lower when deployed. Once in place, the single or multiple swinging egress doors provide complying egress. Large occupant loads and wide-span openings are easily accommodated by the McKEON T5000.

Product Features

Ratings

3-hour rated UL 10B*

90-minute rated assembly available with a 650° F over 30 minutes Temperature Rise rating when required

Smoke & Draft labeled UL 1784

*Listed under the Canadian equivalent CAN/ULC S104

Code Compliance

CCRR-1086

ADA compliant

Egress

Available with up to 18 complying swinging egress doors

Operation

Auto-Set® automatic resetting

Fail-Safe Design - automatic self-closing mechanism does not require power operation to self-close

Size

Unlimited heights and widths to 80'; for larger sizes and custom configurations consult the factory

Finishes

McKEON Sterling Gray

Powder Coat of any color as selected

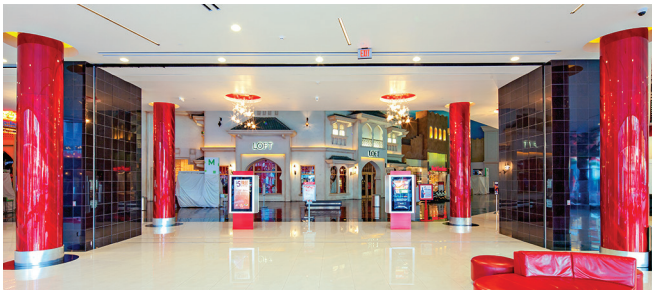
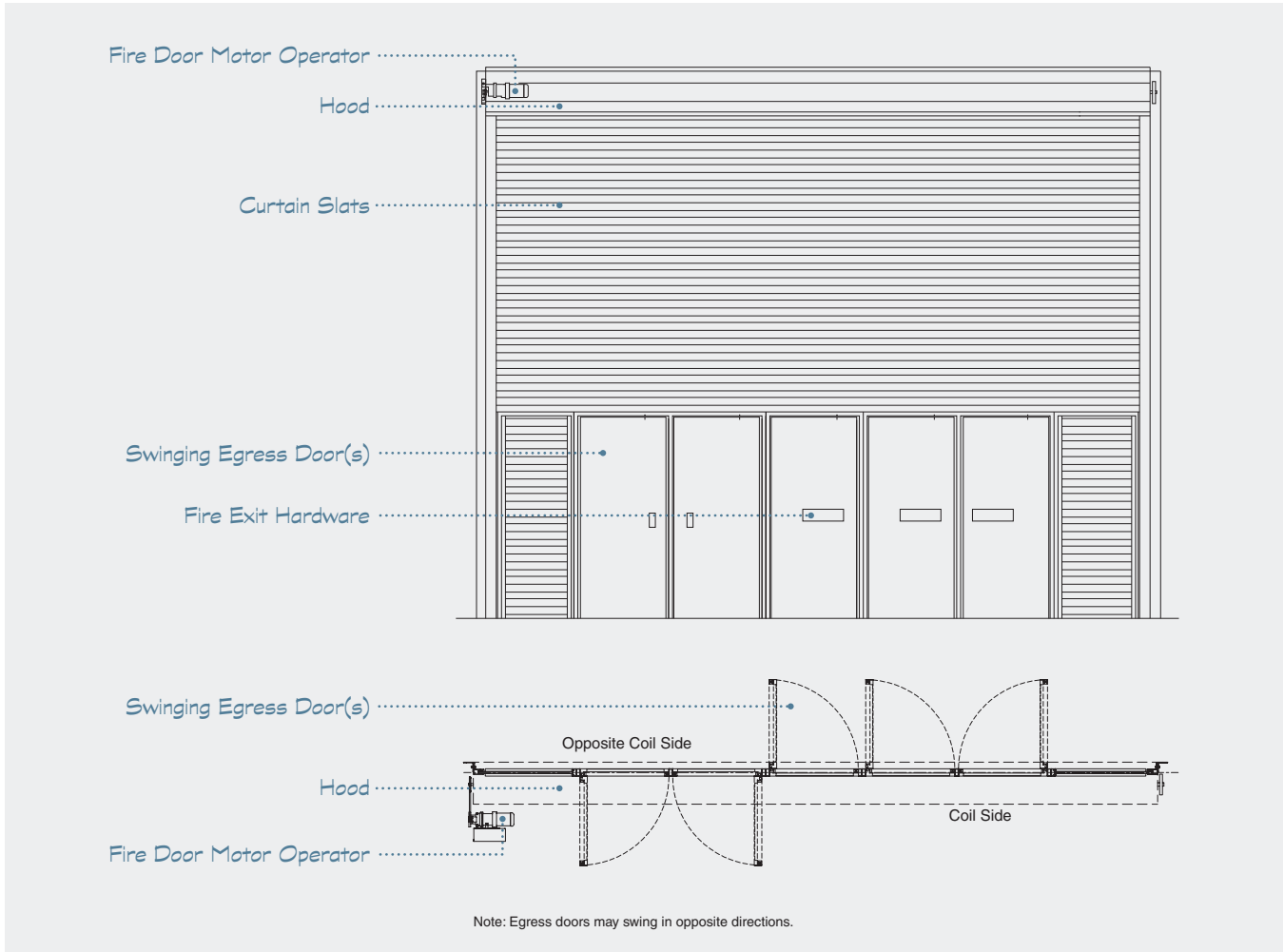
Stainless Steel – No. 4 Polish or

No. 8 Mirror

This technology is the subject of US Patent No. 8,453,707.

T5000

VERTICAL ACTING FIRE DOOR SYSTEMS



MODEL	OPEN	SELF-CLOSE	EGRESS	FUNCTION
T5001	Auto-Set® Power Operator	Fail-Safe Mechanical	1 Complying Swing Door ²	Side Sliding
T5002-T5018 ¹	Auto-Set® Power Operator	Fail-Safe Mechanical	2 to 18 Complying Swing Doors ²	Side Sliding

¹ The last two digits of the model number indicate the number of swing doors

² Maximum swing door width is 48"



44 Sawgrass Drive, Bellport, NY 11713 | 800.266.9392 | www.McKeonDoor.com | Info@McKeonDoor.com

T50000