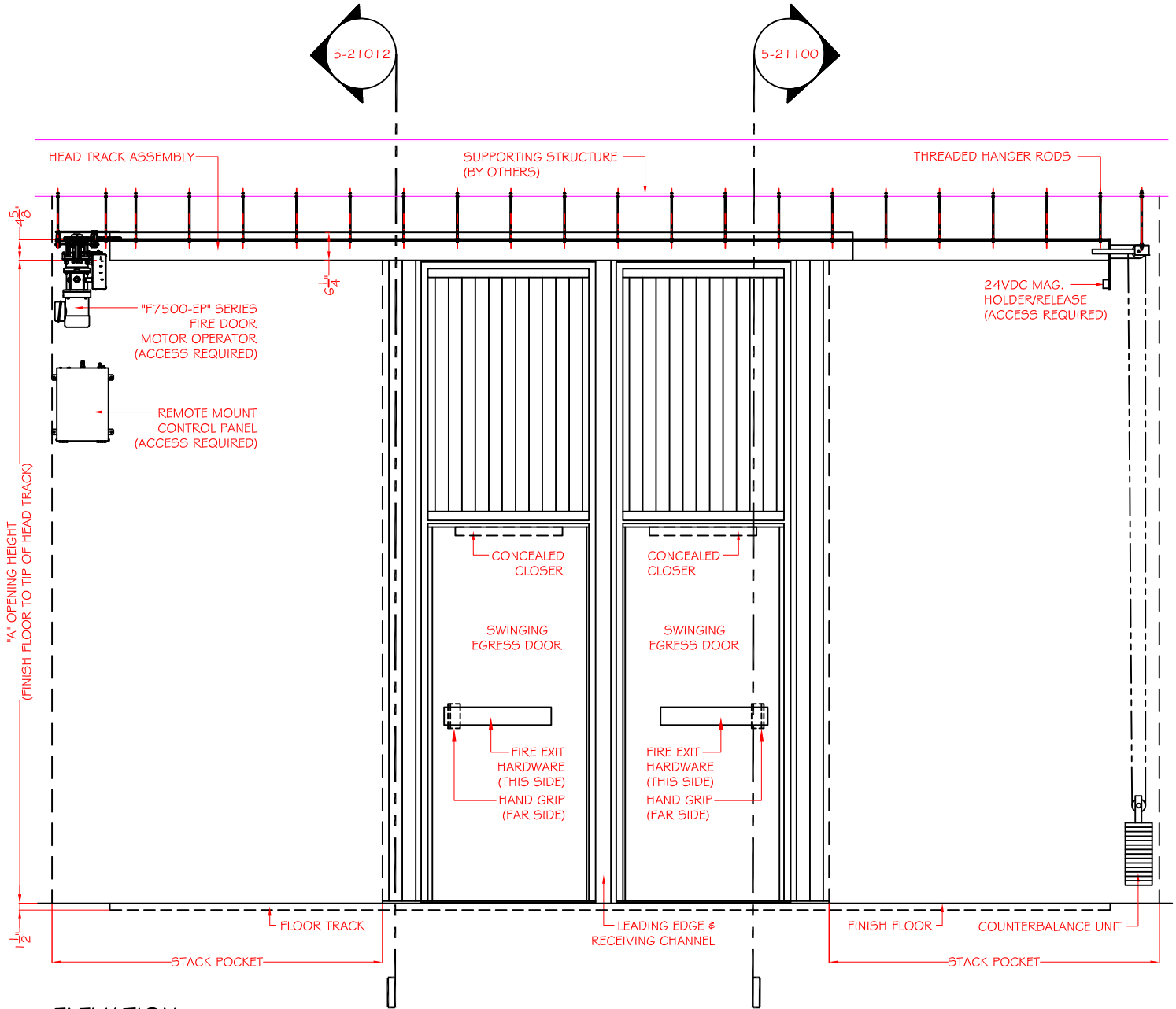


ELEVATION

NOTES:

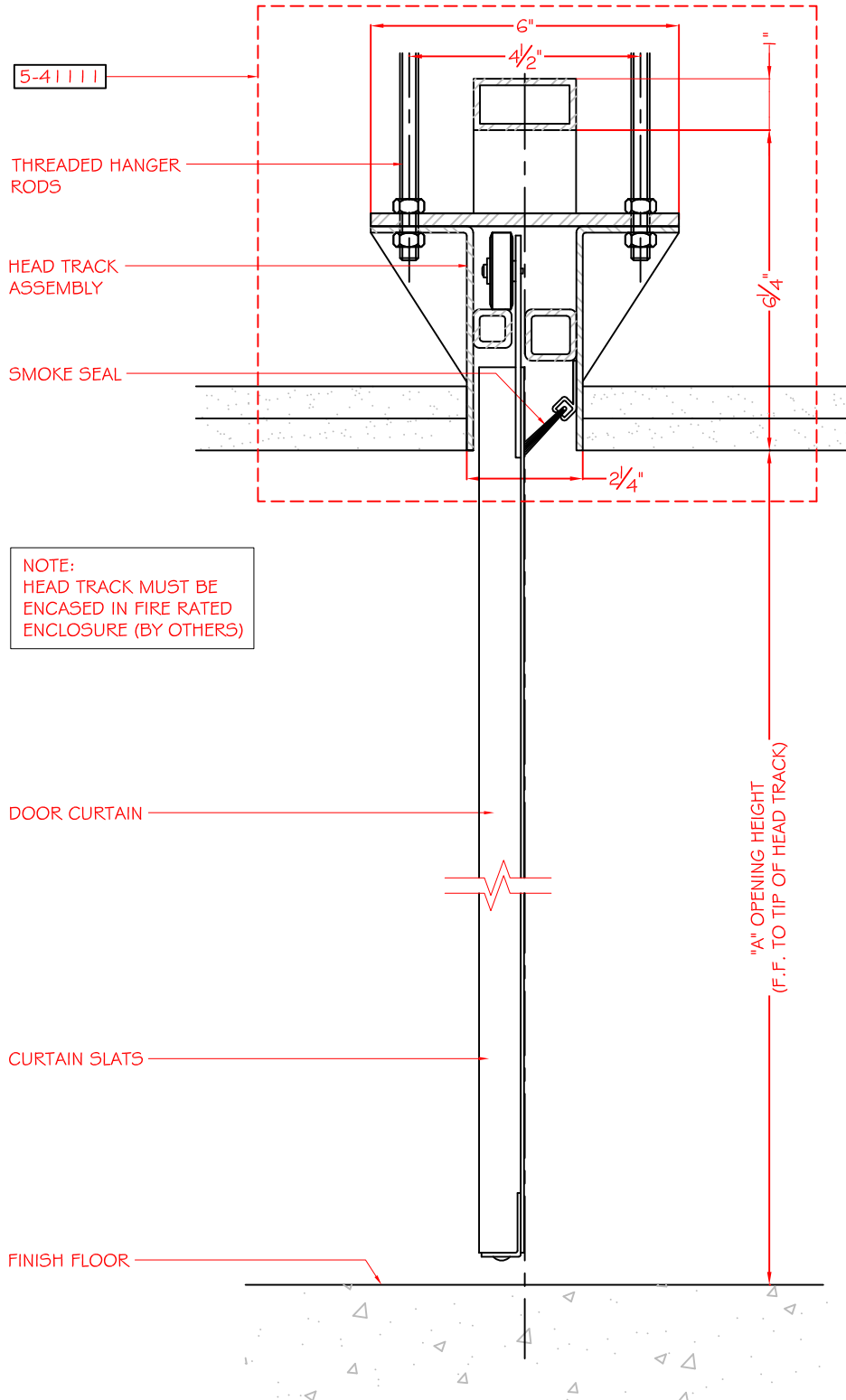
- COUNTERBALANCE UNIT CAN BE RELOCATED TO THE BACK OF THE POCKET. THIS INCREASES THE POCKET DEPTH BY 10".
- DEPENDING ON THE DOOR ASSEMBLY'S WIDTH, HEIGHT, CONFIGURATION AND LATERAL FORCES, FIELD APPLIED LATERAL BRACING MAY BE NECESSARY FOR DOOR ASSEMBLIES REQUIRING THREADED HANGER RODS GREATER THAN 12" IN LENGTH.



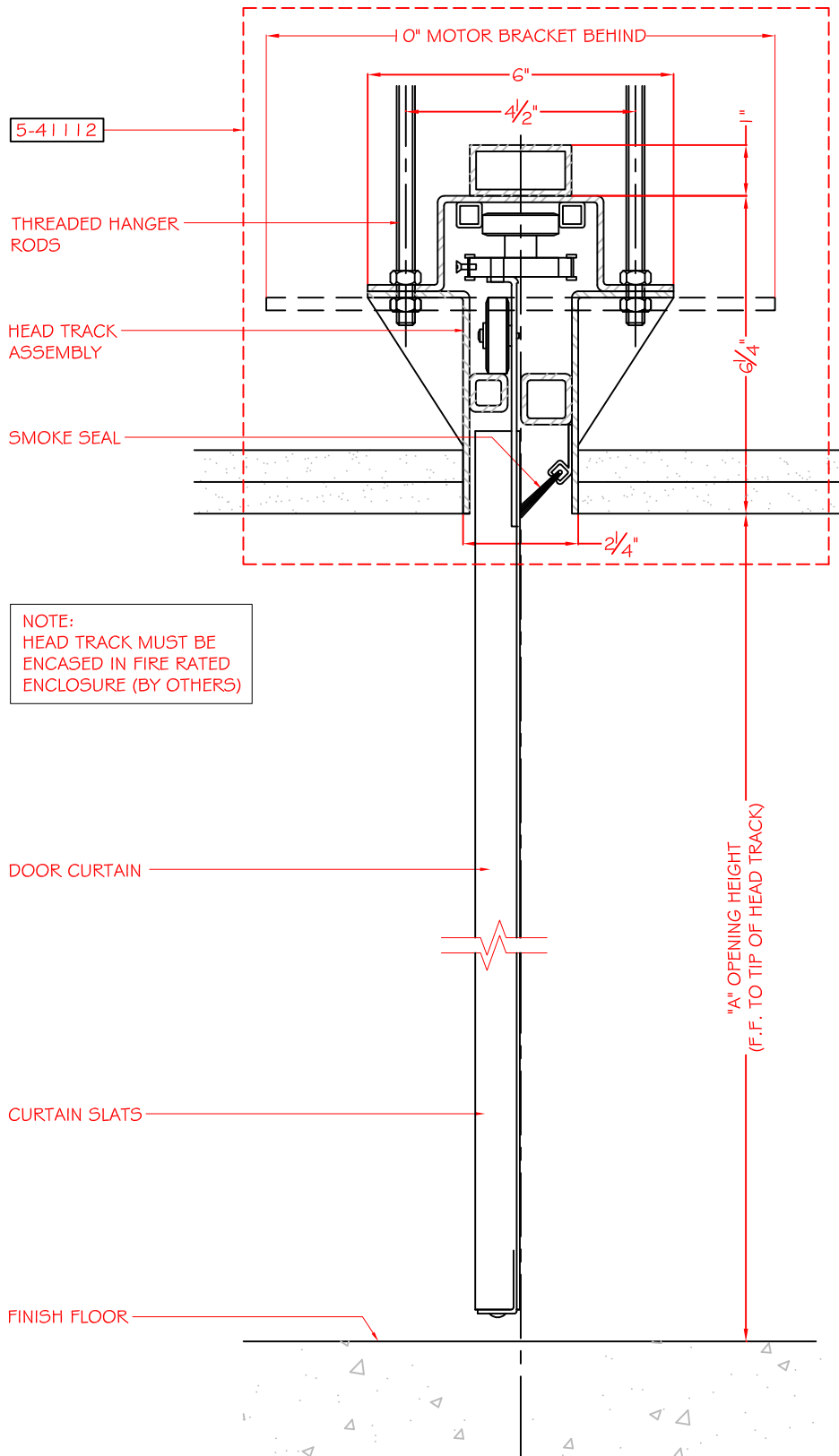
ELEVATION

NOTES:

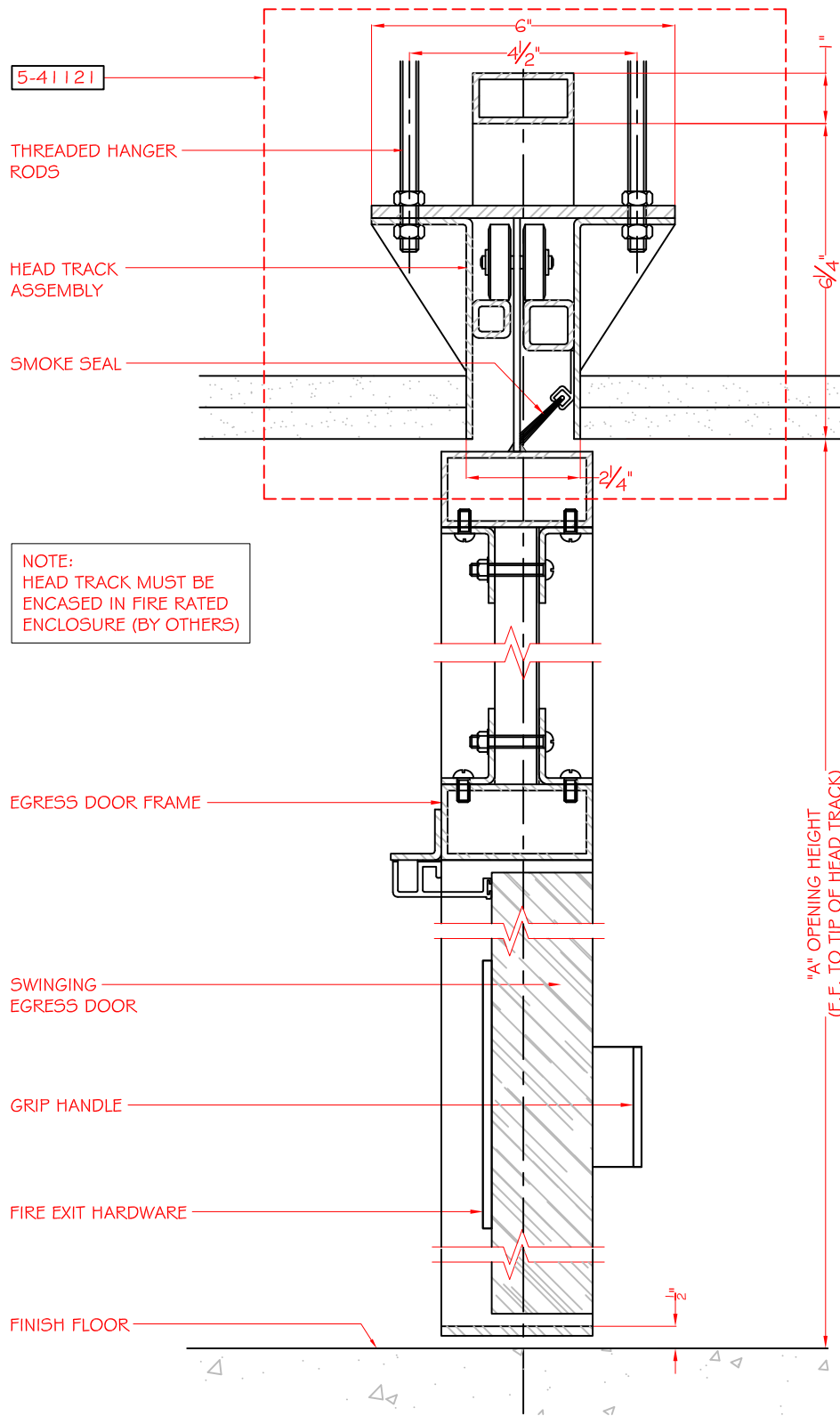
- COUNTERBALANCE UNIT CAN BE RELOCATED TO THE BACK OF THE POCKET. THIS INCREASES THE POCKET DEPTH BY 10".
- DEPENDING ON THE DOOR ASSEMBLY'S WIDTH, HEIGHT, CONFIGURATION AND LATERAL FORCES, FIELD APPLIED LATERAL BRACING MAY BE NECESSARY FOR DOOR ASSEMBLIES REQUIRING THREADED HANGER RODS GREATER THAN 12" IN LENGTH.



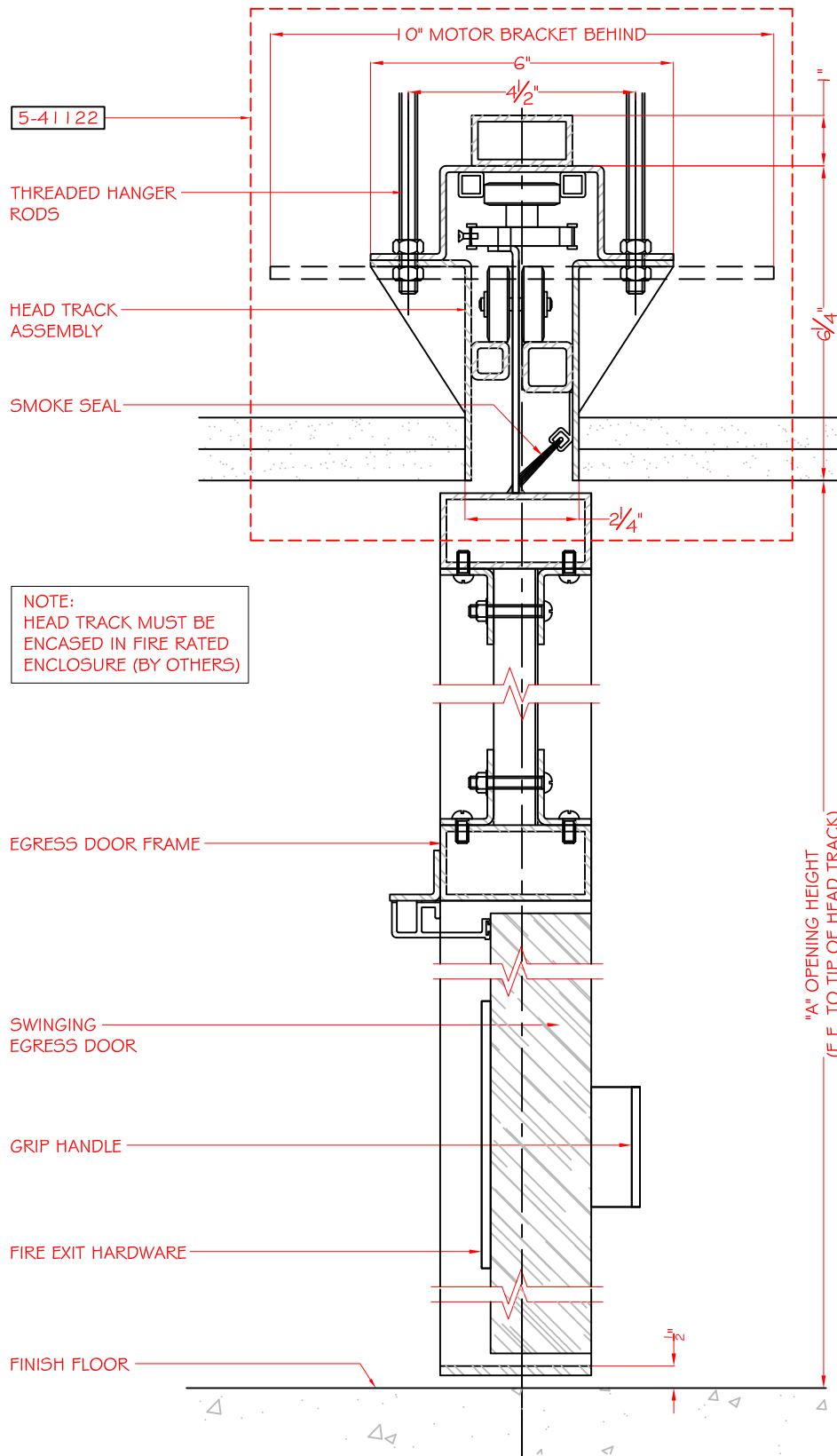
SECTION DETAIL - DOOR CURTAIN (NON-DRIVE SIDE)
(WITHOUT OPTIONAL FLOOR TRACK)



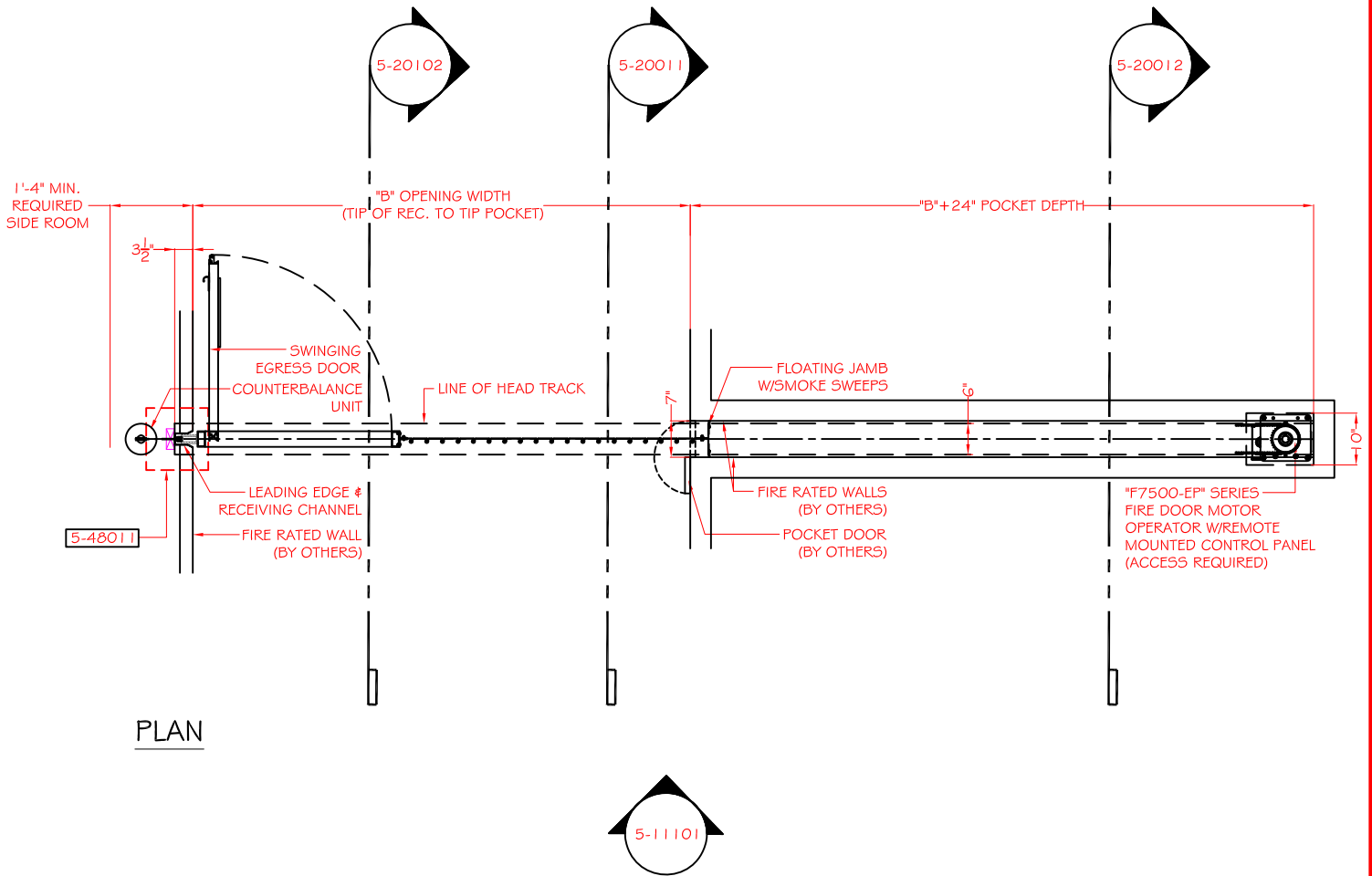
SECTION DETAIL - DOOR CURTAIN (MOTOR SIDE)
(WITHOUT OPTIONAL FLOOR TRACK)



SECTION DETAIL - EGRESS DOOR (NON-DRIVE SIDE)
(WITHOUT OPTIONAL FLOOR TRACK)



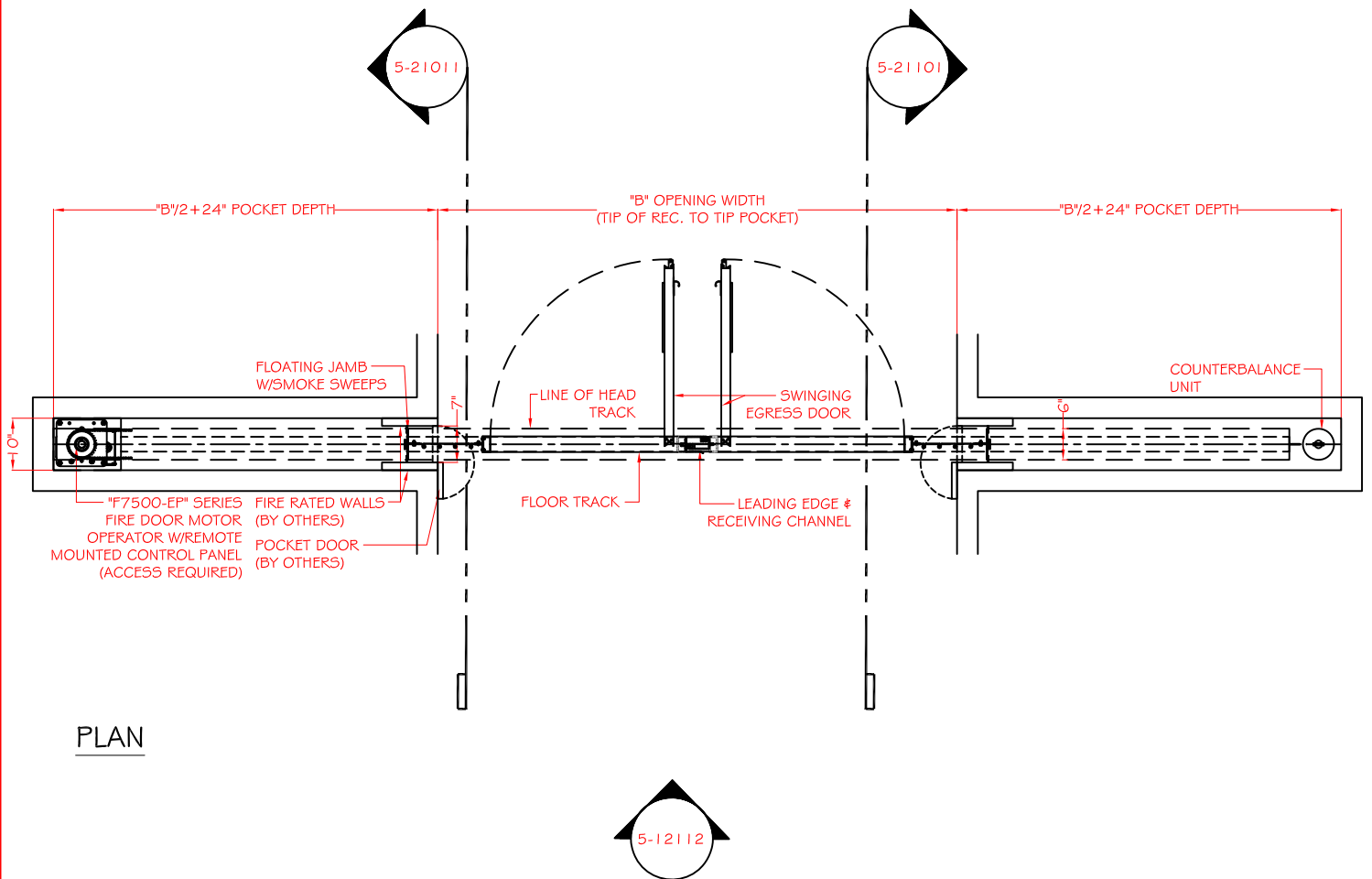
SECTION DETAIL - EGRESS DOOR (MOTOR SIDE)
(WITHOUT OPTIONAL FLOOR TRACK)



PLAN

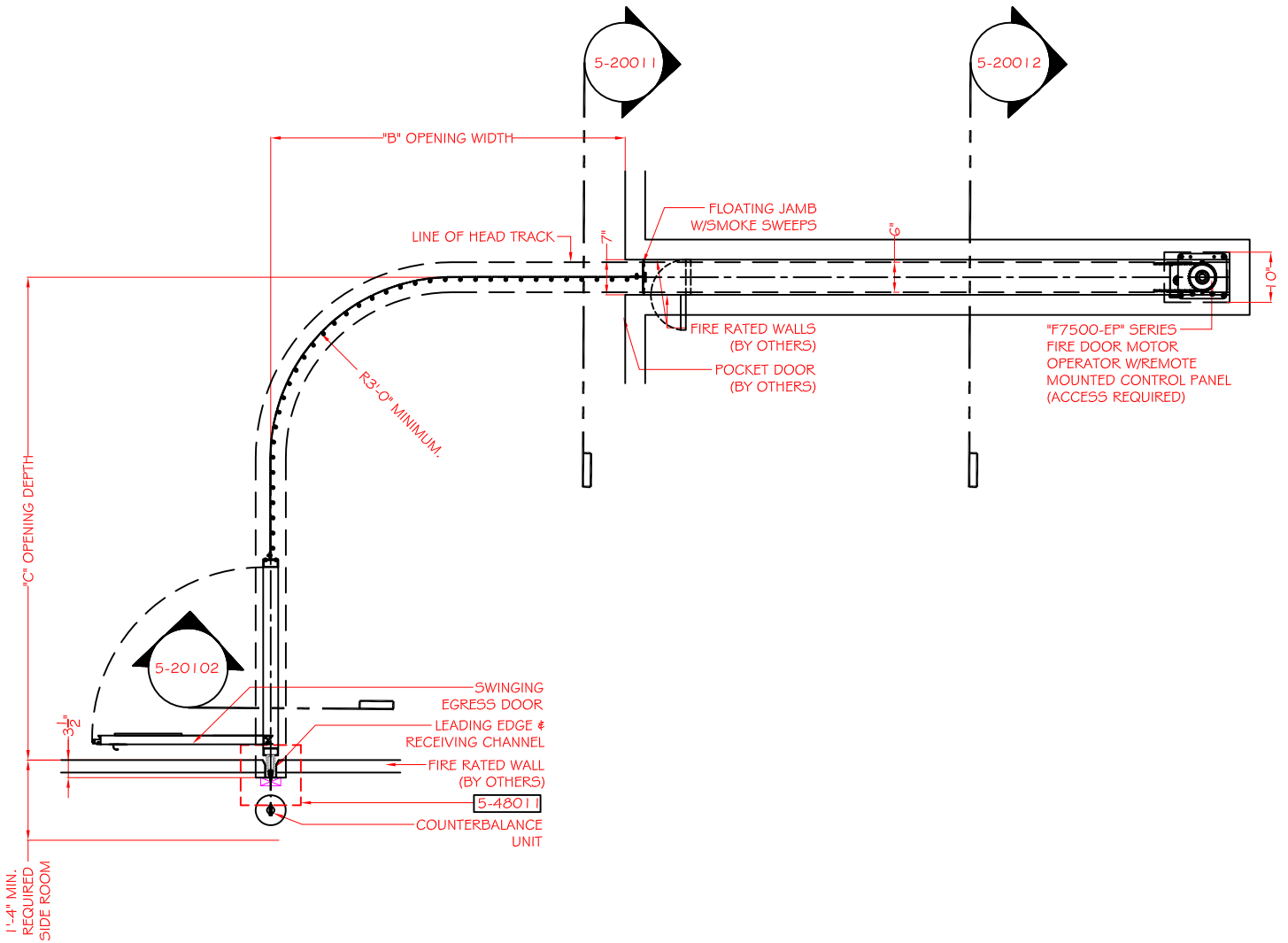
NOTES:

- EGRESS DOORS MAY SWING IN OPPOSITE DIRECTION.
- EGRESS DOORS ARE AVAILABLE UP TO 4'-0" IN WIDTH.
- COUNTERBALANCE UNIT CAN BE RELOCATED TO THE BACK OF THE POCKET. THIS INCREASES THE POCKET DEPTH BY 1'0".



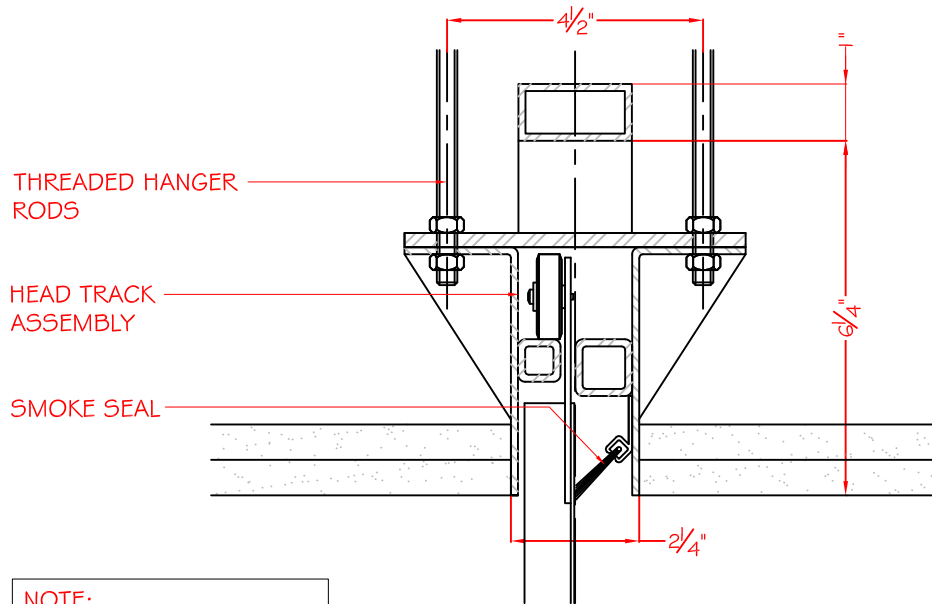
NOTES:

- EGRESS DOORS MAY SWING IN OPPOSITE DIRECTION.
- EGRESS DOORS ARE AVAILABLE UP TO 4'-0" IN WIDTH.
- COUNTERBALANCE UNIT CAN BE RELOCATED TO THE BACK OF THE POCKET. THIS INCREASES THE POCKET DEPTH BY 1'-0".



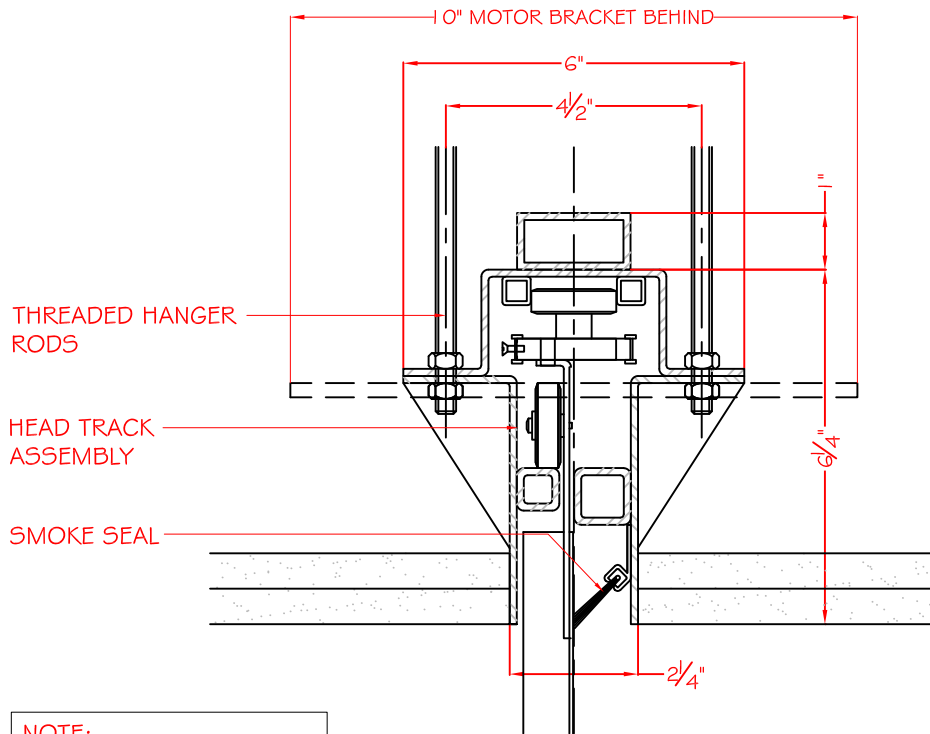
PLAN

- NOTES:
- EGRESS DOORS MAY SWING IN OPPOSITE DIRECTION.
 - EGRESS DOORS ARE AVAILABLE UP TO 4'-0" IN WIDTH.



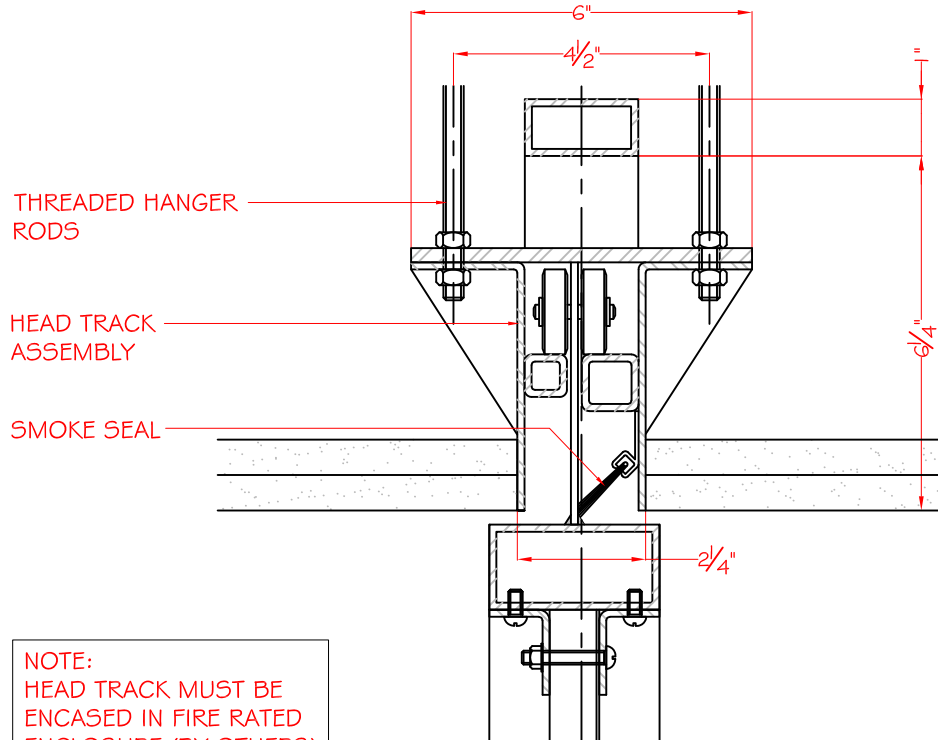
NOTE:
HEAD TRACK MUST BE
ENCASED IN FIRE RATED
ENCLOSURE (BY OTHERS)

HEAD TRACK DETAIL - DOOR CURTAIN
(NON-DRIVE SIDE)

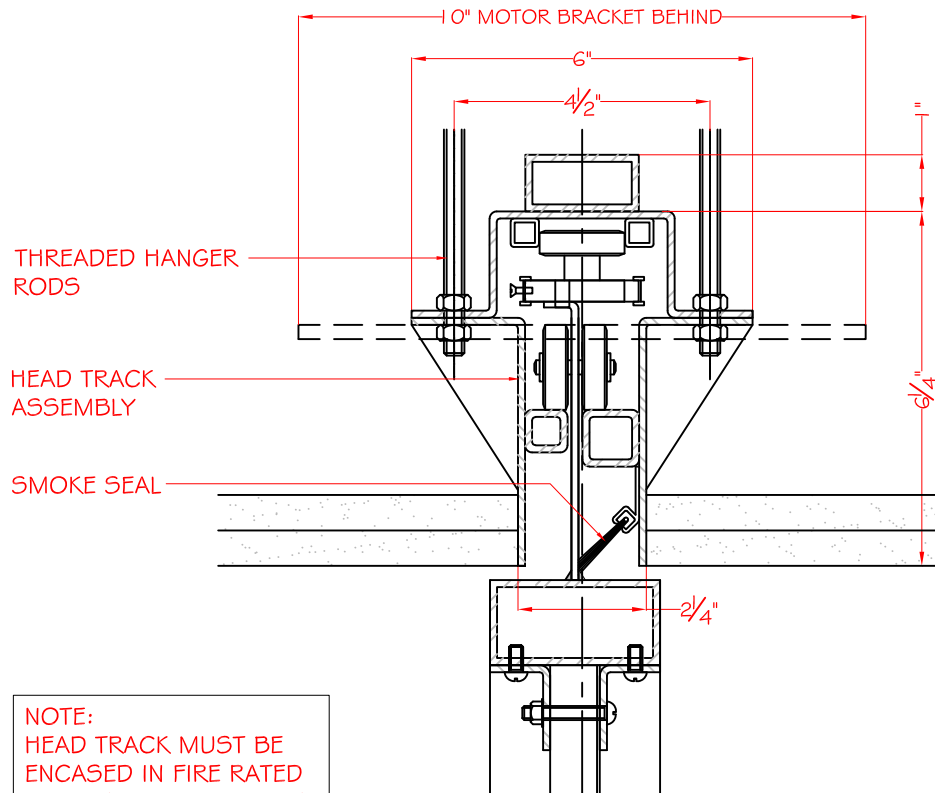


NOTE:
HEAD TRACK MUST BE
ENCASED IN FIRE RATED
ENCLOSURE (BY OTHERS)

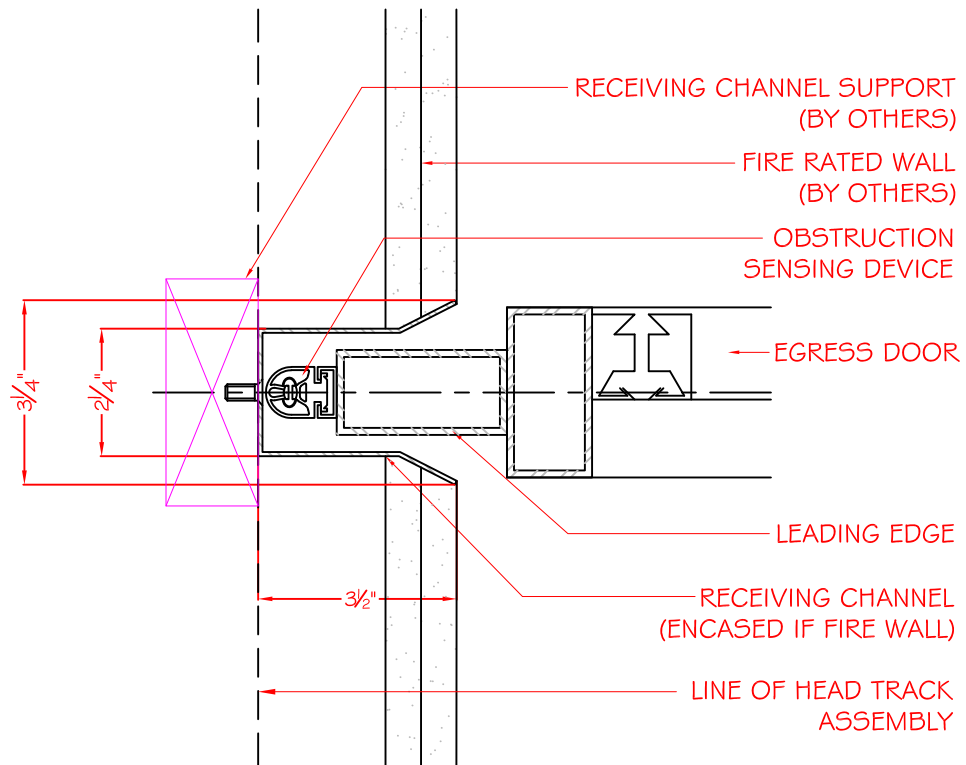
HEAD TRACK DETAIL - DOOR CURTAIN
(MOTOR SIDE)



HEAD TRACK DETAIL - EGRESS DOOR
(NON-DRIVE SIDE)



HEAD TRACK DETAIL - EGRESS DOOR
(MOTOR SIDE)



LEADING EDGE & RECEIVING CHANNEL DETAIL