

---

# GRANDINOTE

---

MAGNETOSOLID® AMPLIFIERS



# GRANDINOTE CELIO

## USER MANUAL



## INDEX

---

INTRODUCTION	PAG. 3
PRODUCT DESCRIPTION	PAG. 3
SPECIFICATIONS	PAG. 4
WARNINGS	PAG. 5
CONNECTIONS - REAR PANEL	PAG. 6
FRONT PANEL	PAG. 8



## INTRODUCTION

---

**GRANDINOTE** congratulates with you for the excellent choice done, buying this exclusive phono preamplifier, masterpiece of style and technology.

You listened the extraordinary musical characteristic of “Magnetosolid®” amplifiers: neutral tone, rich details and harmonics, high speed, big extension, big tight... without intermodulation distortion, with surprising dynamic range, insuperable coherence, natural sound...

These and other qualities are the result of studies and extensive research by Grandinote.

## PRODUCT DESCRIPTION

---

**GRANDINOTE CELIO** is a two steps gain adjustable phono preamplifier, for MM and MC cartridges.

The load for the cartridge is adjustable by dip-switches.

This special phono preamplifier has 2 XLR connectors: one input and one output.

The Celio is both: either a stereo RCA phono preamplifier or a mono XLR phono preamplifier.

To upgrade from a RCA stereo to a XLR stereo phono preamplifier is sufficient to add another Celio to the system: this preserves the investment in Your analogue hifi chain. Celio is totally in Class A, no feedback, direct coupling stages, so without capacitors between stages.

These and others particularity do of Celio an authentic reference phono preamplifier.



## SPECIFICATIONS

---

### Celio MkIV

- MC gain = 66dB
- MM gain = 45dB
- XLR for MONO-BALANCED
- Adjustable load impedances
- Class "A"
- Direct coupling stages: without capacitors between stages
- No feedback
- Full dual mono
- Weight 7kg
- W=178 x H=148 x L=316 [mm]
- Voltage power supply 230V (or 110V)
- Absorption 9W

### NOTE:

---

These specifications will can change without the obligation to report, by Grandinote.



## WARNINGS

---

For the correct and sure use of this product, Grandinote recommends the study and the application of this warning list.

- ***AFTER CELIO'S TURN-ON, WAIT 30 MINUTES TO LISTEN IT. FOR THE FIRST MINUTES THE DEVICE WILL BE MUTE.***
- Don't open the device.
- Don't turn off and turn on quickly the device.
- Before connecting/disconnecting cables, turn off the device and wait 2 minutes.
- In case of malfunction, contact Grandinote's assistance.
- Don't close the vents of cooling of the device.
- Don't put objects or liquids in the vents of cooling of the device.
- Have care the device is supported by correct stand, in function of the weight of the device specified in this user manual.
- Don't strike and don't shake the device.
- Temperature range from 0°C to 35°C.
- Don't approach the device to water, acid, or dangerous substances.
- Don't put every object on the device.
- Clean only with a dry cloth, or slightly damp with water and neutral soap.
- Be sure the power supply net is correct with the device's specifications.
- Be sure the electrical load, on the output connectors, has the correct specifications for the device.
- Don't be short circuit between the connectors with other connectors, ground, the device's body or other potentials.
- Connect the inputs audio, only to appropriate and properly functioning audio sources.
- Don't put potentials or currents not appropriate in the device's inputs, only "PHONO" signals.
- Handle the device with care, for don't damage it, or other things or persons.
- Use the device only for audio amplification and not for other applications.
- Keep the device away from pets, child or other people, who with an inappropriate use can cause damage.



## CONNECTIONS - REAR PANEL

---

In the **PICTURE 2**, we see the input-output connectors on the Celio's rear panel. This phono preamplifier can support stereo unbalanced signals and mono balanced signals. To have a stereo balanced signals, it's necessary to have two Celio: one for left balanced signal, one for right balanced signal.

### UNBALANCED MODALITY (STEREO):

turntable's signals go in the RCA **IN** connectors. The output signals go out to RCA **OUT** connectors.

### BALANCED MODALITY (MONO):

we need two Celio.

For one channel, we take one Celio and the signal goes in the XLR **IN** connector and the output signal goes out to XLR **OUT** connector.

For the other channel, we take the other Celio and the link is identical to the first Celio.

The device's gain is adjustable by the two commutators.

On **H** position the gain is high, on **L** position the gain is low.

The turntable's GND cable can be linked to **GND 1** or **GND 2** connectors..

**GND 1** is the body GND. **GND 2** is the signal GND.

We have to test in what gnd connector the noise is less.

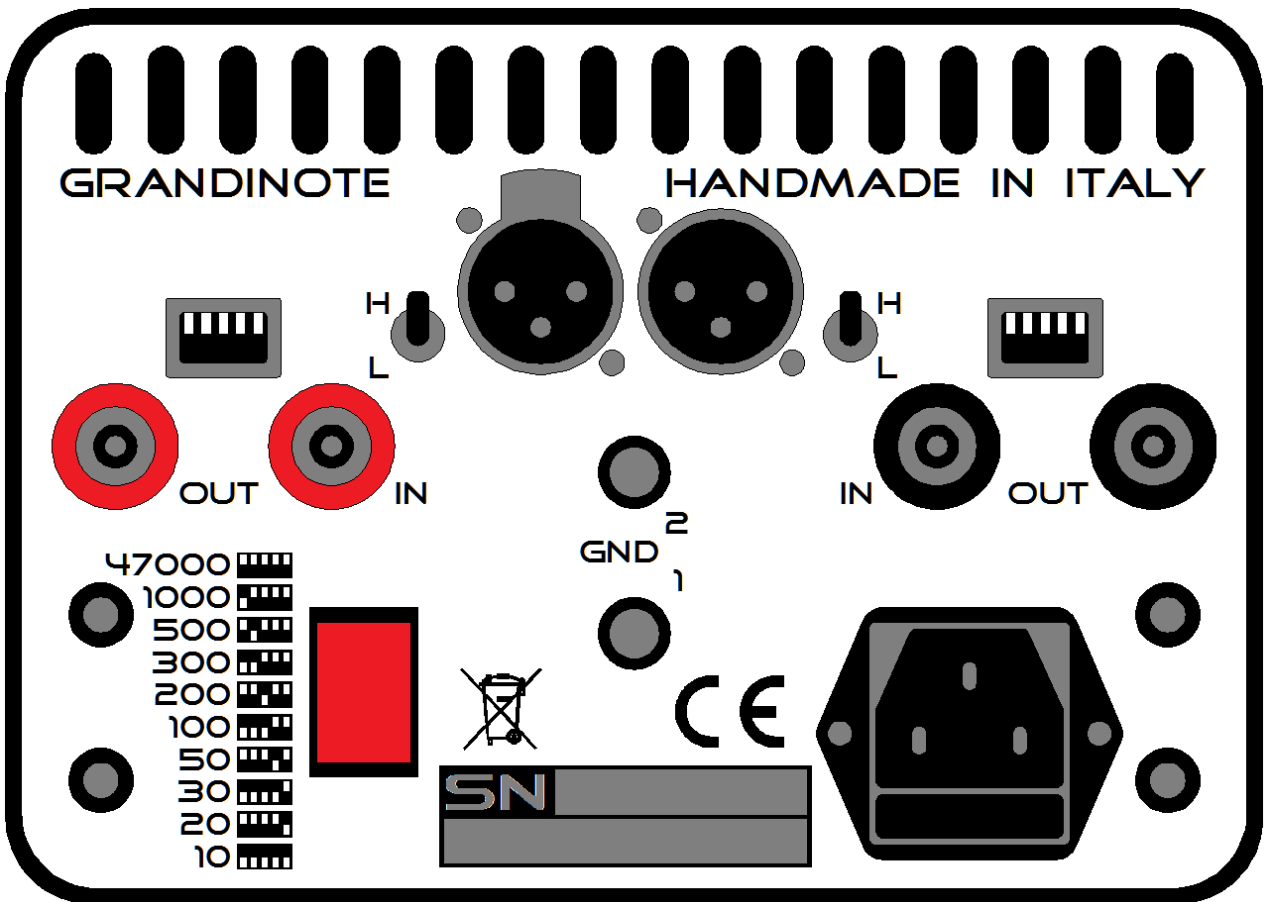
The power supply arrives in the IEC connectors for, with their protection fuse.

The optimal load cartridge is set by 5 microswitches, for each channel.

The correspondence positions-resistive value is printed on Celio rear pannel.

It is visible at the **PICTURE 2**.

The red button is for turn on/off the device. Grandinote advises to keep the Celio always ON. Only for the long inactivity time, we advise to turn off the pre-amp.



PICTURE 2: REAR PANEL



## FRONT PANEL

---

In the **PICTURE 3**, we see the front panel device.

The power-on led is in the middle of panel, below it the power supply switch.

**(Don't turn off and turn on quickly the device).**

For daily use, for the best sound performances, it's better don't turn off the device.

It's advisable to turn off the device, only for long times of inactivity.

Celio gives his very good musical quality, after one hour to the turn on.



PICTURE 3: FRONT PANEL



---

# GRANDINOTE

---

MAGNETOSOLID® AMPLIFIERS

GRANDINOTE SRLS  
VIA PRIMO MAGGIO, 32  
27042 BRESSANA BOTTARONE (PV)  
-ITALY-

P.IVA: 02659140186  
COD. FISCALE: 02659140186  
COD. IBAN: IT12B0838683800000000382064  
BIC/SWIFT: ICRAITRRAQO

[WWW.GRANDINOTE.IT](http://WWW.GRANDINOTE.IT)  
[GRANDINOTE@GMAIL.COM](mailto:GRANDINOTE@GMAIL.COM)

[WWW.FACEBOOK.COM/GRANDINOTE](http://WWW.FACEBOOK.COM/GRANDINOTE)