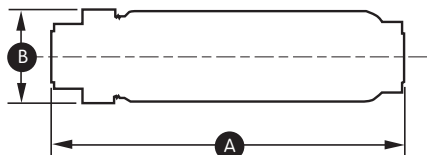


Inline Threaded Filter - Capacity Performance



Technical Data

Size	Lbs.	A	B	Size of Element	No. Required	Part No. 5 Micron	Seal Washers
3/4"	2	6"	1-15/16"	1-1/4" x 3-5/8"	1	73355G001	70019P090
1"	4	9"	2-15/16"	1-1/4" x 6-3/16"	1	73355G002	70019P015
1-1/2"	18-1/2	15"	3-7/8"	2-1/2" x 11-5/32"	1	73355G004	13147P005
2"	19	15"	3-7/8"	2-1/2" x 11-5/32"	1	73355G004	13147P005

0.25 PSIG Inlet Pressure - Capacity (SCFH)

Differential Pressure	3/4" NPT	1" NPT	1-1/2" NPT	2" NPT
1" W.C.	462	543	2600	3350
2" W.C.	652	766	3670	4230

1 PSIG Inlet Pressure - Capacity (SCFH)

Differential Pressure	3/4" NPT	1" NPT	1-1/2" NPT	2" NPT
1" W.C.	543	640	3040	3910
2" W.C.	668	785	3760	4850
5" W.C.	1050	1240	5920	7640
10" W.C.	1480	1740	8340	10,800

5 PSIG Inlet Pressure - Capacity (SCFH)

Differential Pressure	3/4" NPT	1" NPT	1-1/2" NPT	2" NPT
1" W.C.	605	713	3390	4370
2" W.C.	792	933	4430	5710
5" W.C.	1180	1390	6640	8560
10" W.C.	1670	1960	9360	12,100
20" W.C.	2330	2740	13,100	16,900
1 PSID	2730	3200	15,300	19,800

10 PSIG Inlet Pressure - Capacity (SCFH)

Differential Pressure	3/4" NPT	1" NPT	1-1/2" NPT	2" NPT
1" W.C.	675	795	3770	4870
2" W.C.	883	1040	4940	6370
5" W.C.	1320	1560	7840	9590
10" W.C.	1870	2190	10,500	13,500
20" W.C.	2620	3080	14,700	19,000
1 PSID	3070	3600	17,300	22,200

20 PSIG Inlet Pressure - Capacity (SCFH)

Differential Pressure	3/4" NPT	1" NPT	1-1/2" NPT	2" NPT
1" W.C.	794	936	4440	5730
2" W.C.	1040	1230	5810	7500
5" W.C.	1640	1930	9150	11,800
10" W.C.	2220	2600	12,500	16,100
20" W.C.	3120	3670	17,600	22,600
1 PSID	3660	4300	20,600	26,500
3 PSID	6140	7210	34,600	44,500

30 PSIG Inlet Pressure - Capacity (SCFH)

Differential Pressure	3/4" NPT	1" NPT	1-1/2" NPT	2" NPT
1" W.C.	897	1060	5020	6470
2" W.C.	1170	1380	6560	8460
5" W.C.	1850	2180	10,300	13,300
10" W.C.	2520	2960	14,200	18,300
20" W.C.	3550	4170	20,000	25,700
1 PSID	4160	4890	23,400	30,200
3 PSID	7040	8280	39,600	51,100

Capacities based upon natural gas with a specific gravity of 0.6

50 PSIG Inlet Pressure - Capacity (SCFH)

Differential Pressure	3/4" NPT	1" NPT	1-1/2" NPT	2" NPT
1" W.C.	1070	1260	5990	7720
2" W.C.	1400	1650	7840	10,100
5" W.C.	2200	2600	12,300	15,900
10" W.C.	3040	3570	17,100	22,000
20" W.C.	4280	5030	24,100	31,000
1 PSID	5030	5900	28,300	36,400
3 PSID	8570	10,100	48,200	62,100
5 PSID	10,900	12,800	61,200	78,900

75 PSIG Inlet Pressure - Capacity (SCFH)

Differential Pressure	3/4" NPT	1" NPT	1-1/2" NPT	2" NPT
1" W.C.	1250	1480	7010	9040
2" W.C.	1640	1930	9170	11,800
5" W.C.	2580	3040	14,400	18,600
10" W.C.	3600	4240	20,100	25,900
20" W.C.	5050	5930	28,400	36,600
1 PSID	5930	6970	33,400	43,000
3 PSID	10,200	11,900	57,100	73,600
5 PSID	13,000	15,200	72,900	93,900

100 PSIG Inlet Pressure - Capacity (SCFH)

Differential Pressure	3/4" NPT	1" NPT	1-1/2" NPT	2" NPT
1" W.C.	1410	1660	7890	10,200
2" W.C.	1840	2170	10,300	13,300
5" W.C.	2900	3420	16,200	20,900
10" W.C.	4050	4770	22,600	29,200
20" W.C.	5650	6650	31,600	40,700
1 PSID	6710	7890	37,800	48,700
3 PSID	11,500	13,500	64,800	83,600
5 PSID	14,800	17,300	82,900	107,000

125 PSIG Inlet Pressure - Capacity (SCFH)

Differential Pressure	3/4" NPT	1" NPT	1-1/2" NPT	2" NPT
1" W.C.	1550	1830	8670	11,200
2" W.C.	2030	2390	11,300	14,600
5" W.C.	3190	3760	17,800	23,000
10" W.C.	4450	5240	24,900	32,100
20" W.C.	6210	7320	34,700	44,800
1 PSID	7420	8710	41,700	53,800
3 PSID	12,800	15,000	71,700	92,400
5 PSID	16,300	19,200	91,900	119,000

150 PSIG Inlet Pressure - Capacity (SCFH)

Differential Pressure	3/4" NPT	1" NPT	1-1/2" NPT	2" NPT
1" W.C.	1680	1980	9380	12,100
2" W.C.	2200	2590	12,300	15,800
5" W.C.	3450	4070	19,300	25,000
10" W.C.	4820	5680	26,900	34,700
20" W.C.	6720	7920	37,600	48,400
1 PSID	8060	9470	45,300	58,400
3 PSID	13,900	16,300	78,000	101,000
5 PSID	17,800	20,900	100,000	129,000

160 PSIG Inlet Pressure - Capacity (SCFH)

Differential Pressure	3/4" NPT	1" NPT	1-1/2" NPT	2" NPT
1" W.C.	1730	2030	9650	12,400
2" W.C.	2260	2660	12,600	16,300
5" W.C.	3550	4190	19,900	25,600
10" W.C.	4960	5840	27,700	35,700
20" W.C.	6910	8140	38,700	49,800
1 PSID	8200	9900	46,000	60,000
3 PSID	14,500	17,000	81,000	103,000
5 PSID	18,300	21,500	102,000	132,000

0.5 barg Inlet Pressure - Capacity (SCMH)

Differential Pressure	3/4" NPT	1" NPT	1-1/2" NPT	2" NPT
1 mbar	9	11	56	72
2 mbar	14	16	79	103
5 mbar	22	26	126	162
10 mbar	31	37	178	229
50 mbar	44	52	250	323
100 mbar	69	81	392	505
150 mbar	96	114	545	702
250 mbar	116	137	655	844
250 mbar	145	170	814	1050
350 mbar	164	193	923	1190

1 bar = 100 kPa
1 mbar = 0.1 kPa

Capacities based upon natural gas with a specific gravity of 0.6

1 barg Inlet Pressure - Capacity (SCMH)

Differential Pressure	3/4" NPT	1" NPT	1-1/2" NPT	2" NPT
1 mbar	11	13	65	83
2 mbar	16	19	91	119
5 mbar	25	30	145	187
10 mbar	36	42	205	285
50 mbar	51	60	290	373
100 mbar	80	94	454	586
150 mbar	113	133	634	818
250 mbar	136	160	767	988
250 mbar	171	201	963	1240
350 mbar	197	231	1110	1430

1 bar = 100 kPa
1 mbar = 0.1 kPa

Inline Threaded Filter - Capacity Performance

2 barg Inlet Pressure - Capacity (SCMH)

Differential Pressure	3/4" NPT	1" NPT	1-1/2" NPT	2" NPT
1 mbar	14	16	79	103
2 mbar	19	23	113	145
5 mbar	31	37	178	230
10 mbar	44	52	252	324
50 mbar	63	74	355	458
100 mbar	99	117	559	720
150 mbar	139	164	784	1010
250 mbar	169	199	952	1230
250 mbar	215	252	1210	1560
350 mbar	249	293	1400	1810

1 bar = 100 kPa
1 mbar = 0.1 kPa

3 barg Inlet Pressure - Capacity (SCMH)

Differential Pressure	3/4" NPT	1" NPT	1-1/2" NPT	2" NPT
1 mbar	16	19	91	119
2 mbar	23	27	130	168
5 mbar	36	42	206	265
10 mbar	51	60	291	375
50 mbar	72	85	411	529
100 mbar	115	135	647	834
150 mbar	162	190	909	1170
250 mbar	197	231	1110	1430
250 mbar	250	294	1410	1820
350 mbar	292	344	1640	2120

1 bar = 100 kPa
1 mbar = 0.1 kPa

4 barg Inlet Pressure - Capacity (SCMH)

Differential Pressure	3/4" NPT	1" NPT	1-1/2" NPT	2" NPT
1 mbar	18	21	103	133
2 mbar	25	30	145	188
5 mbar	40	47	230	296
10 mbar	57	67	325	419
50 mbar	81	95	459	592
100 mbar	129	151	724	933
150 mbar	181	213	1020	1310
250 mbar	221	259	1240	1600
250 mbar	282	331	1590	2040
350 mbar	330	388	1860	2390

1 bar = 100 kPa
1 mbar = 0.1 kPa

5 barg Inlet Pressure - Capacity (SCMH)

Differential Pressure	3/4" NPT	1" NPT	1-1/2" NPT	2" NPT
1 mbar	19	23	113	145
2 mbar	28	33	159	205
5 mbar	44	52	252	325
10 mbar	63	74	356	459
50 mbar	89	105	503	649
100 mbar	141	166	794	1020
150 mbar	199	233	1120	1440
250 mbar	242	285	1360	1760
250 mbar	310	364	1740	2250
350 mbar	364	427	2050	2640

1 bar = 100 kPa
1 mbar = 0.1 kPa

10 barg Inlet Pressure - Capacity (SCMH)

Differential Pressure	3/4" NPT	1" NPT	1-1/2" NPT	2" NPT
1 mbar	27	31	153	197
2 mbar	38	45	216	278
5 mbar	60	71	341	440
10 mbar	85	101	482	622
50 mbar	121	142	682	879
100 mbar	191	225	1080	1390
150 mbar	270	317	1520	1960
250 mbar	330	388	1860	2390
250 mbar	424	498	2390	3070
350 mbar	499	587	2810	3620

1 bar = 100 kPa
1 mbar = 0.1 kPa