
Mounting & Maintenance

Oversize Pulley Wheel Aero System

For Shimano Dura Ace 9100 + Ultegra 8000

Series derailleurs



CERAMICSPEED

Maintenance

No set of rules can be made for how often your Oversized Pulley Wheels are to be maintained. Maintenance frequency depends on the weather conditions that you are riding in.

A worn chain will increase the wear on the pulley wheels significantly, so make sure that you change your chain before it is completely worn out. Under



normal conditions, we recommend that you service the Oversized Pulley Wheels when you have ridden under wet conditions, washed your bike or each time you lubricate the chain. For normal maintenance, add a drop of oil into the lubrication points (see the page 3) for optimal performance. Make sure to position the OSPW System horizontally to ensure that the oil reaches the Oversized Pulley Wheel bearings.

We recommend the use of CeramicSpeed Oil on the OSPW System. This can be purchased from the CeramicSpeed dealers worldwide or from our webshop. Watch our maintenance video on ceramicspeed.com in the Support section.

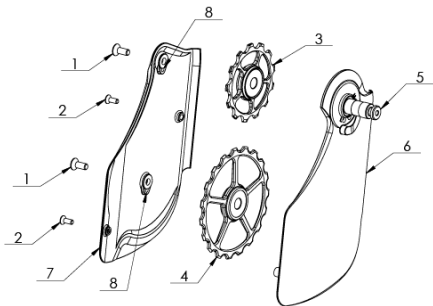
When travelling, your OSPW System will not fit in the bike travelling bag. We recommend that you dismount the whole rear derailleur and pack it aside.

Extended Maintenance

Approximately once every half a year we recommend that you perform an extended maintenance. In this case, you should dismount the Oversized Pulley Wheels from the cage, remove the seals from both sides and clean all parts in a shaker with degreaser. After cleaning, dry the components off, put two drops of oil onto the CeramicSpeed Balls, place the seals back on and remount the Oversized Pulley Wheels. When dismounting the cage plates, you will need a 2.5 mm Allen Key for the pulley wheel bolts (see page 3) and a 2 mm Allen key for the tower bolts. To remount the screws, tighten the pulley wheel screws up to a max torque of 1,5 Nm and the tower bolts up to 0.9 Nm. For this, a torque tool is recommended. If you're riding in wet and muddy conditions, we recommend you perform an extended maintenance more frequently and replace oil with All Round Grease for better protection.

Mounting the CeramicSpeed Oversized Pulley Wheel System Aero for Shimano 11 Speed

Pos.	Description
1	Pulley wheel bolts
2	Tower bolts
3	Upper pulley
4	Lower pulley
5	Cage pivot
6	Front cage plate
7	Back cage
8	Pulley wheel lubrication point



Tools required:

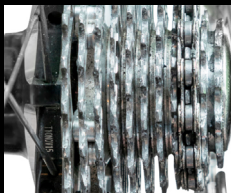
For the installation of your new CeramicSpeed Oversized Pulley Wheel System Aero for Shimano Dura Ace 9100 + Ultegra 8000 you will need the following tools:

- A: 2mm Allen key
- B: 2,5mm Allen key
- C: Chain Tool
- D: T10 Torx® Screwdriver
- E: Phillips Screwdriver for rotation stop screw

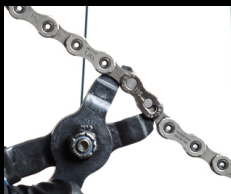


Mounting Manual

To ensure the very best in riding performance it is vital that your new OSPW Aero System is mounted correctly. Follow these instructions to install your OSPW Aero System for Shimano Dura Ace 9100 and Ultegra 8000 series derailleurs:



1. Begin with your bike mounted in a stand. Shift the derailleur up so that the cage can rotate past the body. Remove the rear wheel.



2. Remove the chain with a proper chain tool. Upon completion of installing the OSPW Aero System you will often need to use a new, longer chain. Note: it is not recommended to add links to a previously cut chain.



3. Then shift the derailleur up, past the cable. Shift the derailleur up so that the cage can rotate past the body. Remove the rotation stop screw using a Philips screwdriver, and carefully allow the cage to unwind.



4. Locate the black mounting screw on the bottom of the derailleur body. Use a T10 Torx screwdriver to remove the black T10 mounting screw. Only half of the screw is threaded. Once the screw is about 1 cm out and the threads are not engaged, slide the screw the rest of the way out with your hand.



5. Slide out the original pulley cage and spring assembly, careful not to drop the pulley spring and plastic spacer.



6. Remove the spring and plastic spacer from the Shimano cage. The end of the spring is hooked to lock into the pulley cage. Keep these aside as you will reuse these for the installation of the OSPW Aero System.



7. Unpack the OSPW Aero System.
8. Place the original spring and plastic spacer over the mounting post of the OSPW System in the same manner they were removed from the stock cage. The hooked end goes toward the OSPW cage as well as the flat edge of the plastic spacer.

Note the four spring tension settings on the OSPW Aero cage: from H (high) to L (low). The L tension setting will reduce both chain tension and friction, but will also result in slightly compromised shifting performance. The H tension setting provides the best in shifting performance, yet it will increase friction performance slightly over other tension settings.



- 9.** Select the spring tension hole second from 'L' (second lowest tension) and insert the hooked end of the spring completely. This may need to be pressed firmly. The plastic spacer will rest freely on the spring until aligned at the back of the derailleur body.



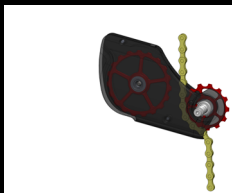
- 10.** Rotate the derailleur body back, align the mounting post of the OSPW Aero System with the back of the derailleur body and the cage pointing to the front of the bike. Align the tension spring and plastic spacer with the squared slot on the derailleur body and insert until the cage is flush to the derailleur. Ensure the OSPW cage rotates smoothly and the spring is properly secured.



- 12.** Hold the OSPW Aero cage against the derailleur body and rotate counter-clockwise (first up and then to the back of the bike and down-ward) until you feel the ramped stop tower click past the stop point on the derailleur.



- 13.** Secure the cage by reinstalling the original black T10 screw (removed at step 3). Installation torque is 1Nm. Your new OSPW Aero system is now installed.



- 14.** Shift the derailleur down to the bottom and install the rear wheel. To install the chain, hold the cage back to be horizontal to the ground. Feed the chain from the back of the cage, between the pulleys aiming to exit the cage in front of the upper pulley. Pull half the chain through the system.



15. Ensure the remainder of the chain is not twisted, and feed the free end into the back of the cage and around the lower pulley.



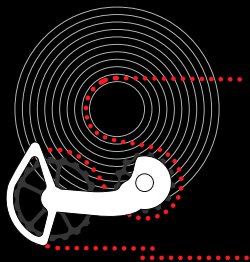
16. Follow the chain length guide below to cut the chain to the appropriate length. Ensure the derailleur hanger is accurately aligned, check the upper and lower stops of the derailleur, and set the b-limit gap between 4-7mm at the largest cog and upper pulley. Adjust the trim for proper alignment between the cogs and pulley wheels. Confirm successful shifting through all gear combinations. If in doubt, have a qualified mechanic make the final gear adjustments.

NB: For the best result use a Shimano Ultegra or Dura-Ace Cassette (11-32T Max)

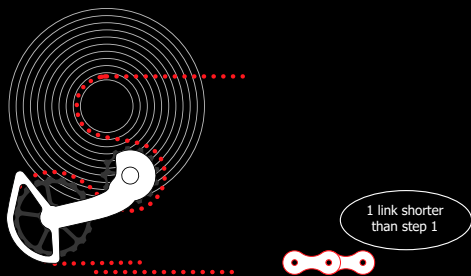
For removal and installation of the rear wheel, the chain should be positioned on one of the smallest 4 cogs, and the small chain ring for 2X setups. For 1X arrangements, the chain should be on one of the smallest 3 cogs

Chain length

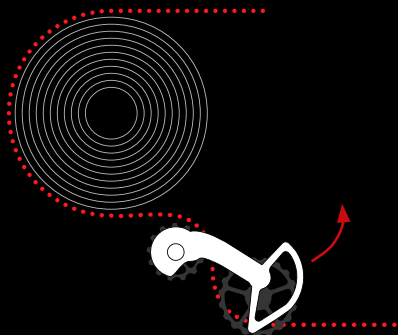
Test the present chain length acc. to the description below.
If it turns out to be necessary to change the chain length, follow the
description below.



STEP 1: Place the chain on the smallest cog on the cassette. To find the correct chain length, pull the two chain ends together, just as you would when needing to cut a chain to length. The lower part of the cage should start to move downwards, away from the cassette, as referenced in the second image.



STEP 2: When tension is applied on the chain and the OSPW Aero System appears to be aligned as the diagram above, the chain needs to be cut (1 link shorter than step 1) and connected by the required amount of links in order to achieve sufficient tension in this gear combination (always the small cog on the cassette).



STEP 3: With the chain now cut to length it is important to test the clearance of the OSPW Aero System when the rear derailleur is set in the largest cog on the cassette. Just as the arrow indicates the cage should be able to rotate counter clockwise. It is important that there is some clearance between the upper pulley wheel of the OSPW Aero System and the largest cog on the cassette. If you find the clearance is not enough, adjust the B-tension accordingly.

Up to Lifetime warranty

Thankfully, we do not have to deal with warranty issues often. Nevertheless, we are happy to introduce you to our comprehensive warranty program.

Standard products 4 years

Bottom Brackets Pulley Wheels Wheel Kits Headsets
Single Bearings

Coated products + OSPW Cages Lifetime warranty

Bottom Brackets
Pulley Wheels
Wheel Kits
Headsets
Single Bearings

We are committed to manufacturing and delivering the best ceramic bearing products in the industry. Should your CeramicSpeed product not live up to your expectations, and this is caused by defects in materials and/or workmanship, we encourage you to contact us.

Register your product within the first 30 days of purchase on ceramicspeed.com/sport under the section Support. Should you thereafter, and within the warranty period need to file a claim, please return to the same section on our website and fill in your claim. We will always strive to revert to you concerning your claim within 24 hours.

ceramicspeed.com/sport/support