



# Mounting instructions

OSPW X for SRAM RED XPLR E1



# TOOLS FOR REPLACEMENT:



3mm Tamper Allen key bit



Torque wrenches covering  
(1,5Nm, 4,5Nm)



Chain tool



SRAM setup Guide (APP)

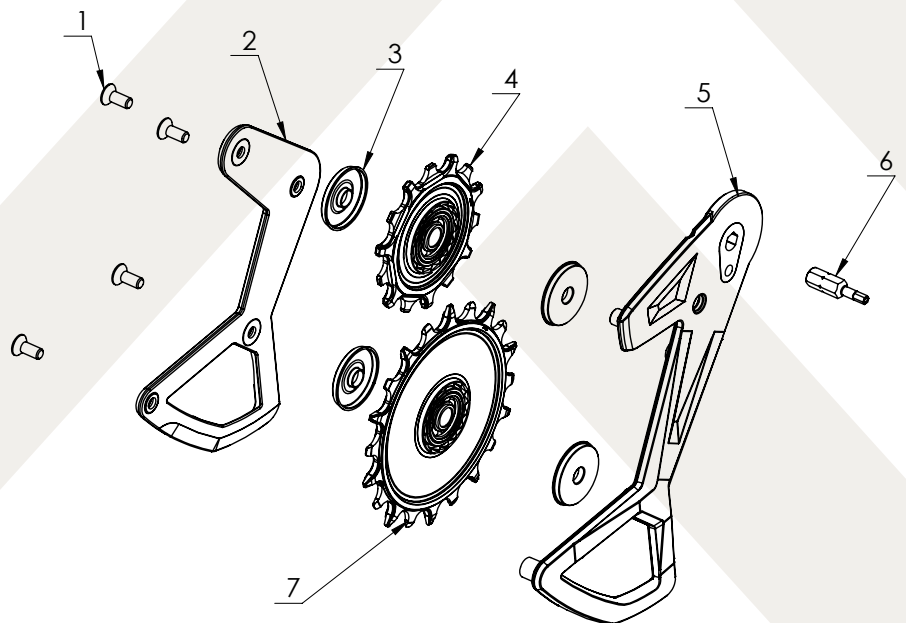
## Maintenance

Every 5.000km/3.000m or once or twice per year, In harsh or extreme conditions every 3000km/1800m. The back side cage plate & both pulleys should be removed and all components thoroughly cleaned.

With the ADR shields removed, carefully remove the bearing seals and flush the bearings with UFO Bearing Cleaner. Apply a few drops of UFO Pulley Oil and reinstall the pulley seals. Take careful note of the rotation direction of the pulleys with ADR when reinstalling into the cage.

The cage tower bolts are torqued to 1,5Nm.

POS	Description
1	Cage bolts
2	Back cage plate
3	Stainless steel ADR Dust shield
4	14T Upper ALPHA Disc
5	Front cage plate
6	3mm tamperproof bit
7	20T Lower ALPHA Disc



**DO NOT REMOVE THE CAGE + CLUTCH ASSEMBLY FROM THE DERAILLIEUR HOUSING FOR THIS PROCEDURE!**



## Remove the chain

Remove the rear wheel. Shift the derailleur up so that the cage can rotate past the body and chainstay.

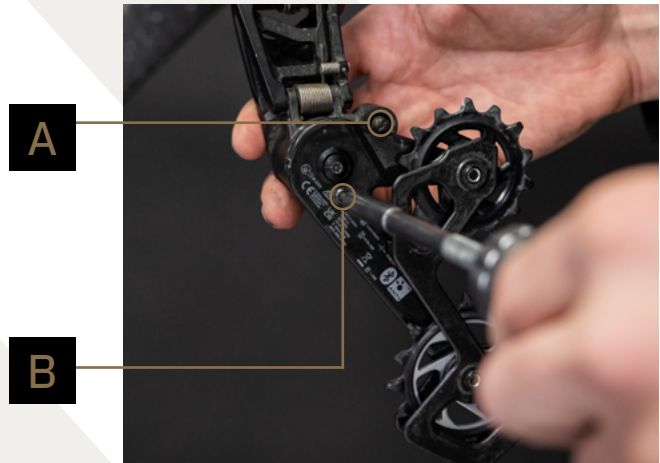


## Removal of the stock cage:

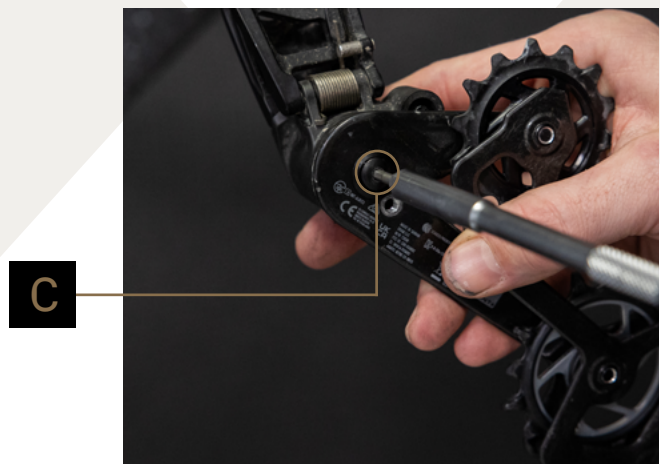
Lock the cage in place by using the cage lock. (A)

Unscrew stop bolt (B) using the included 3mm tamper bolt bit, found under the packaging insert in the box.

Hold the cage securely and release the cage lock to unwind the spring tension (A)



Once the spring tension is released, unscrew the main cage bolt (C) using the 3mm tamper bolt bit, to remove the cage from the clutch assembly and the derailleur housing. The clutch assembly remains inside the derailleur.



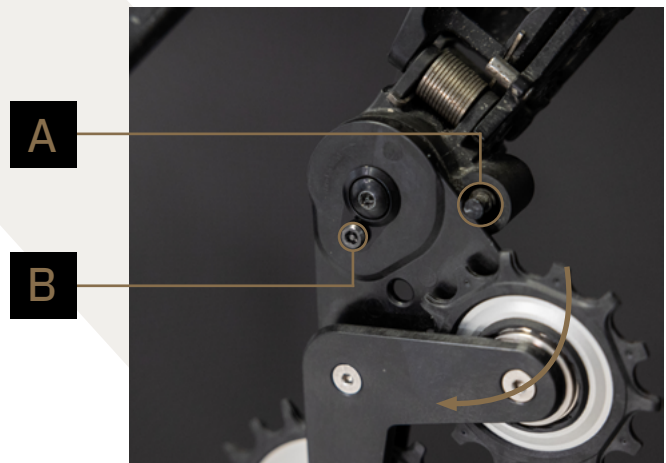
## Install the OSPW X:

Using the OE main cage bolt and original washer, secure the OSPW X cage in place on the back of the derailleur to a torque of 4,5Nm.



Tension the spring tension by rotating the OSPW X cage counterclockwise (following the direction arrow on the cage) until you can lock the cage using the cage lock (A).

Re install stop bolt (B) and tighten to 4,5Nm



Carefully release the cage lock.

The cage should rotate smoothly, with even pressure forward, and a firm quick spring backwards.



## Install the chain

Install a new chain and follow the chain length measurement guide provided by SRAM:

[Find the guide here](#)

Once the chain is installed, ensure alignment trim is set correctly and you are ready to go ride.

There is no implied or otherwise suggested compatibility by SRAM regarding exchanging the of derailleur cage.





