

# 08

## BLAST Series

# HAVE A BLAST!

REINFORCED STEEL CONSTRUCTION FOR A COMPACT AND MODERN DESIGN WITH UNSURPASSED DRYING SPEED FOR A LONG LASTING DURABILITY. ENVIRONMENTALLY FRIENDLY, USING LESS THAN 1/6<sup>th</sup> OF THE ENERGY OF A CONVENTIONAL HAND DRYER

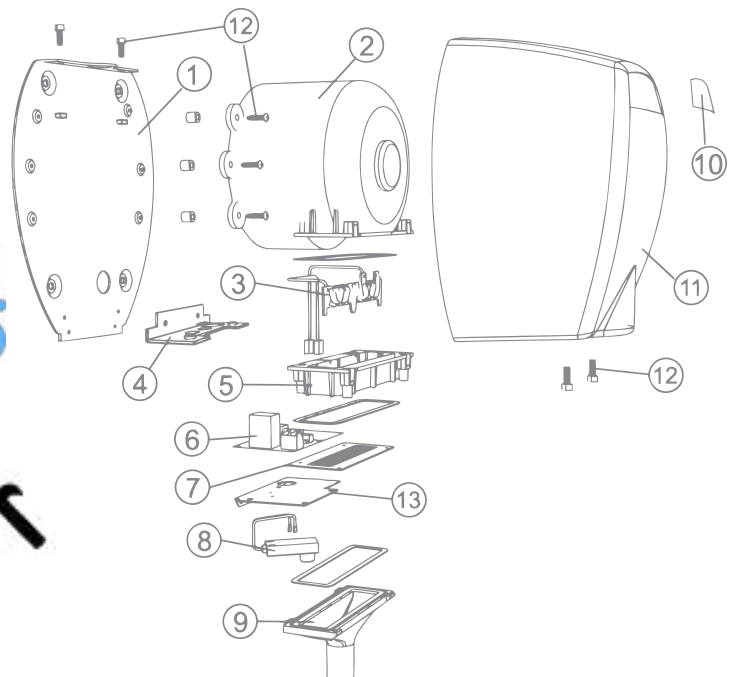
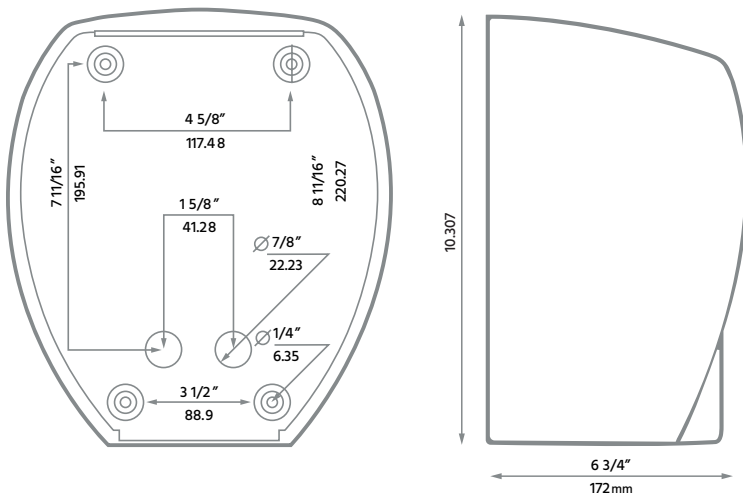
## FEATURES

- Vandal proof-not scratchable with any sharp object
- Fastest drying time on the market
- Automatic infrared actuated sensor, for power conservation and maximum hygiene
- Robust, tamperproof design and construction for greater product durability and longevity in application
- High velocity (100 CFM) airflow for ultra high speed hand drying
- Universal voltage: automatic voltage switching for an easier installation
- Contributes to LEED and BOMA building certifications
- **Exclusive: Heater on~off switch**
- Smallest footprint on the market
- Tamperproof screws

## APPLICATIONS

- Washrooms and clean up areas, commercial facilities, factories, restaurants and hospitals
- schools, pools, gyms.
- Made for high traffic public areas

## DIMENSIONS



## REPLACEMENT PARTS

1	Baseplate	8	Sensor
2	Motor Assembly	9	Nozzle
3	Heating Elements	10	Nameplate
4	Inlet Grill (cast cover)	11	Cover
5	Element housing	12	Fasteners
6	Circuit Board	13	Sensor Mounting Plate
7	Outlet Grill Bracket	14	Tamper-Proof Key



White



Black



Stainless Steel



Chrome

## SPECIFICATIONS

**Voltage** Universal 115-230\*VAC (\*50/60Hz)  
**Wattage** 1450 W at 5.2A (230VAC)  
**Motor** Vacuum Motor, 36,000 RPM (outside the enclosure)  
 5/8HP 20,000 RPM (installed in the enclosure)  
**Colour** White, Black and Gray  
**Finish** Porcelain enamel.  
**Heating Element** 725w resistance coil.  
**Construction Material** Reinforced Steel

**Controls & Wiring** Automatic resetting thermostat with cutout when airflow is restricted. Infrared sensor cutout two seconds after hand removal, and 85 seconds after initiating drying.  
**Installation** Removable predrilled baseplate for easy mounting.  
**Warranty** LIFETIME  
 CSA certified for use in Canada and the U.S. CE approved for use where applicable.  
**Patent Pending**

## ORDERING GUIDE

Model No.	Color	Watts cold air hot air	Volts Hz	Air Velocity LFM	Air Volume CFM	Noise dB	Dimensions (W x H x D) (mm/in.)	Weight (kg/lbs.)
C-200000000	White	725-1450	115-230,50-60	19,000	100	78	235 x 280 x 170 (9.25 x 11.02 x 6.69)	5/11
C-200240000	Black	725-1450	115-230, 50-60	19,000	100	78	235 x 280 x 170 (9.25 x 11.02 x 6.69)	5/11
C-200220000	Brushed stainless steel	725-1450	115-230, 50-60	19,000	100	78	235 x 280 x 170 (9.25 x 11.02 x 6.69)	5/11
C-200230000	Chrome	725-1450	115-230, 50-60	19,000	100	78	235 x 280 x 170 (9.25 x 11.02 x 6.69)	5/11



COMMERCIAL HAND DRYERS TO ORDER PLEASE CALL 1-855-550-0303

