

Switches, Low Voltage

5A, 24VDC

Heavy Duty, Specification Grade

HUBBELL

Features

- Momentary Contact
- 3 Position, Center OFF
- Automatic self-grounding stainless steel clip

Ordering Information

Description	Device Color	UPC Number	Catalog Number
Toggle, back and side wired	Ivory	783585554730	HBL15571LV



Specifications

Front	Thermoplastic
Base	Thermoset
Contacts	Silver Alloy
Terminal Screws	Brass
Mounting Bridge	Steel, Nickel Plated

Performance

Electrical

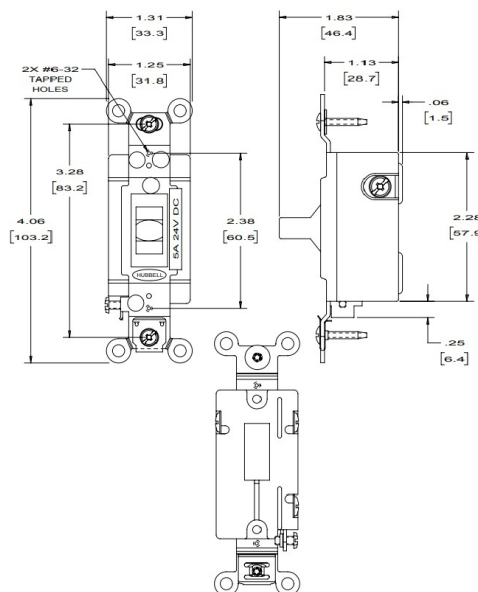
Configuration	Single Pole/Double Throw
Operating Current	Maximum of 5A @ 24VDC

Mechanical

Terminal Accomodations	#14 AWG min. - #10 AWG max. solid or stranded copper wire only
------------------------	--

Environmental

Operating Temperature	Max. continuous: 75°C; Min. continuous: -40°C without impact
-----------------------	--



Complementary Products

Wallplate, Toggle Opening, Snap-on	NPS11
Wallplate, Toggle Opening	NP11
Wallplate, Toggle Opening, Stainless Steel	SS1

Online Resources

Customer Use Drawing
eCatalog
Installation Instructions

Dimensions in Inches (mm)

Hubbell Wiring Device-Kellems • Hubbell Incorporated (Delaware) • 40 Waterview Drive • Shelton, CT 06484

Phone (800) 288-6000 • Fax (800) 255-1031 • Specifications subject to change without notice.

