

Switches, Low Voltage

5A, 24VDC

Heavy Duty, Specification Grade

HUBBELL

Features

- Momentary Contact
- 3 Position, Center OFF
- Automatic self-grounding stainless steel clip

Ordering Information

| Description | Device Color | UPC Number | Catalog Number |
|-----------------------------|--------------|--------------|----------------|
| Toggle, back and side wired | Gray | 783585554723 | HBL1557GYLV |

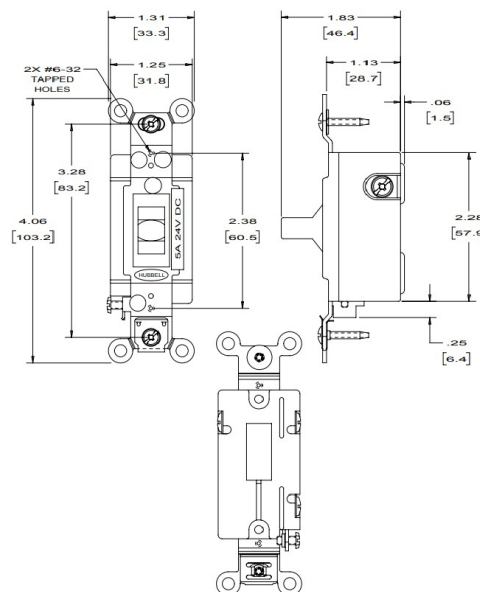


Specifications

| | |
|-----------------|----------------------|
| Front | Thermoplastic |
| Base | Thermoset |
| Contacts | Silver Alloy |
| Terminal Screws | Brass |
| Mounting Bridge | Steel, Nickel Plated |

Performance

| Electrical | |
|------------------------|--|
| Configuration | Single Pole/Double Throw |
| Operating Current | Maximum of 5A @ 24VDC |
| Mechanical | |
| Terminal Accomodations | #14 AWG min. - #10 AWG max. solid or stranded copper wire only |
| Environmental | |
| Operating Temperature | Max. continuous: 75°C; Min. continuous: -40°C without impact |



Complementary Products

| | |
|--|-------|
| Wallplate, Toggle Opening | NP1GY |
| Wallplate, Toggle Opening, Stainless Steel | SS1 |

Online Resources

Customer Use Drawing
eCatalog
Installation Instructions

Dimensions in Inches (mm)

Hubbell Wiring Device-Kellems • Hubbell Incorporated (Delaware) • 40 Waterview Drive • Shelton, CT 06484

Phone (800) 288-6000 • Fax (800) 255-1031 • Specifications subject to change without notice.

