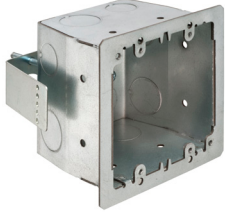
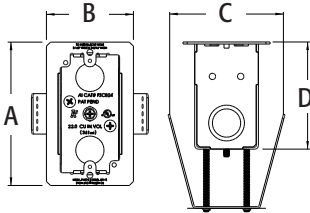




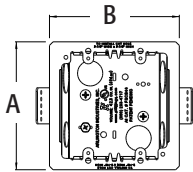
FSCB24



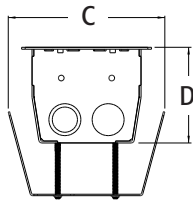
FSCB44



FSCB24



FSCB44



FSCB44

Steel 4x4 Box & Single-Gang Box for Concrete Block

For concrete block. Screw hole patterns for 4x4 and 2-gang devices. For added convenience bracket ends break off for use on thicker block walls.

CATALOG NUMBER	UPC/DCI/NAED MFG #018997	DESCRIPTION/ ATTACHMENT	UNIT PKG	STD PKG	DIM A	DIM B	DIM C	DIM D
FSCB24	11237	Steel, Single-gang	25	25	4.437	2.688	3.519	3.315
FSCB44	11236	Steel, 4x4	20	20	4.437	4.500	5.428	3.315



FEATURES AND BENEFITS

- 1/2" and 3/4" knockouts
- Screw hole patterns for devices: 4x4 and two-gang in the 4x4 box, and devices for the single-gang box
- Spring clip holds box securely against block when screws are tightened

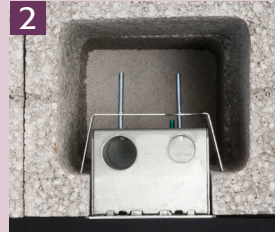
Scan For Video



EASY INSTALLATION



Opening in block.



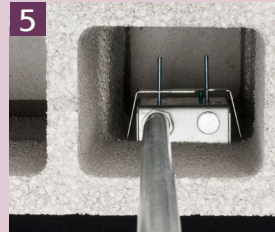
Insert the box in the opening in the block. (Top view shown.)



Tighten the screws on the spring clip to pull it securely against the block.



Install the EMT in the top of the box. Top view: EMT installed in box.



Continue adding block.

Scored bracket ends break off as needed for use on thicker block.

