

# N3603



**UPC Code :** 078477101865

**Country Of Origin :** Mexico

60 Amp, 600 Volt, 3-Pole, Non-Fused Manual Motor Controller

60 Amp, 600 Volt, Toggle In Type 3R Enclosure Three-Pole AC Manual Motor Controller, Industrial Grade, Grounded To Enclosure, Front Wired, - Gray

Powerswitch® Industrial Grade AC Manual Motor Controllers provide safe, reliable control of a variety of motor loads. Typical applications include manual ON/OFF switching control of conveyor systems, pumping machines, HVAC systems, air compressors and other heavy manufacturing equipment. These motor controllers are available for both single-phase and three-phase applications.

## Technical Information

### AC Horsepower Ratings

**HP Rating :** 10HP-240V 25HP-480V 30HP-600V

### Electrical Specifications

**Amperage :** 60 A

**Dielectric Voltage :**  
Withstands 2200V for 1 min.

**Endurance :** 6,000 cycles  
inductive motor type load

**Grounding :** Non-Grounding

**Pole :** 3

**Temperature Rise :** 50°C Max  
at full rated current

**Voltage :** 600 VAC

### Environmental Specifications

**Enclosure Rating :** Type 3R

**Flammability :** Rated V-0 per  
UL 94

**Operating Temperature :** -40°  
C to 60°C

### Material Specifications

**Base Material :** Thermoplastic  
Polyester

**Color :** Gray

**Contacts :** .046" Thick Silver-  
Cadmium Oxide

**Enclosure Material :** Powder-  
Coated Steel

**Face Material :** Thermoplastic  
Polyester

**Handle Material :** Valox 357  
PBT

**Strap Material :** Nickel Plated  
Brass

**Terminal Screws :** Zinc-Plated  
Steel, Triple Combination

**Toggle :** Thermoplastic  
Polyester

**Yoke :** Nickel-Plated Brass

### Mechanical Specifications

**Product ID** : Ratings are permanently marked on device

**Terminal Accom.** : 10-4 AWG

**Terminal ID** : T1, T2, T3, L1, L2 & L3 marked on back of device

**Termination** : Front

**Torque Range** : 25 inch pounds maximum

### Standards and Certifications

**ANSI** : C-73

**NEMA** : WD-1 & WD-6

**NOM** : NOM-ANCE

**UL 60947-4-1** : supersedes UL 508

**Warranty** : 10-Year Limited

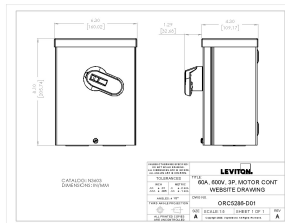
**cUL per CSA C22.2 No. 111** : File #E63969

### Product Features

**Color** : Gray

**Device Type** : Enclosed Switch

## Dimensional Drawing



### **Leviton Manufacturing Co., Inc**

201 North Service Road, Melville, NY 11747

Telephone: +1-800-323-8920 · FAX: +1-800-832-9538 · Tech Line (8:30AM-7:30PM E.S. T. Monday-Friday): +1-800-824-3005

### **Leviton Manufacturing of Canada, Ltd.**

165 Hymus Boulevard, Pointe Claire, Quebec H9R 1E9 · Telephone: +1-800-461-2002 · FAX: +1-800-824-3005 ·

### **Leviton S. de R.L. de C.V.**

Lago Tana 43, Mexico DF, Mexico CP 11290 · Tel.: (+52)55-5082-1040 · FAX: (+52) 5386- 1797 ·

**Visit our Website at: [www.leviton.com](http://www.leviton.com)**

© 2025 Leviton Manufacturing Co., Inc. All Rights Reserved. Subject to change without notice.

**Leviton has a global presence.**

If you would like to know where your local Leviton office is located please go to:  
[www.leviton.com/company/about-leviton/locations](http://www.leviton.com/company/about-leviton/locations)

**© 2025 Leviton Manufacturing Co., Inc.**