

## Two-Gang Low Profile IN BOX®

Two-gang recessed electrical box with extra duty weatherproof in use cover for flat surfaces, masonry, retrofit, and siding construction. Non-metallic cover and base. Installs two outlets or combo devices. Box and white cover are textured/ paintable. UV rated plastic for long outdoor life. Compatible with DBV2C and DBV2W extra duty replacement covers on K-17.

CATALOG NUMBER	UPC/DCI/NAED MFG #018997	DESCRIPTION/ COVER COLOR	UNIT PKG	STD PKG	DIM A	DIM B	DIM C	DIM D	DIM E
DBVM2C	03962	Vertical/Clear	1	4	9.058	8.992	5.142	1.919	3.223
DBVM2W	03963	Vertical/White	1	4	9.058	8.992	5.142	1.919	3.223
DBVR2C	03964	Vertical/Clear	1	4	7.159	6.888	5.142	1.295	3.847
DBVR2W	03965	Vertical/White	1	4	7.159	6.888	5.142	1.295	3.847
DBVS2C	03960	Vertical/Clear	1	4	9.058	8.992	5.142	2.263	2.879
DBVS2W	03961	Vertical/White	1	4	9.058	8.992	5.142	2.263	2.879

**UL** **SP** **PATENTED.**  
E170558 LR49636 **MADE IN USA.**

Note: Meets 2021 NEC section 406.9 (B) for the protection of exterior outlets where an extra duty weatherproof in use cover is required for 15 or 20 AMP receptacles installed outdoors. Add suffix "GC" to Catalog # when ordering in Canada, for example DBVM2CGC. 2-Gang,

**ADDITIONAL PATENTS PENDING.**

### FEATURES AND BENEFITS

- IN BOX's one piece assembly replaces the installation of an electrical box and bubble cover assembly
- Installs in the wall, so less of it shows outside
- No gaskets required
- For flat surfaces, vinyl siding, stucco over masonry or wood (with or without lath), and retrofit
- Install an outlet and a switch, or two switches in one location
- Includes 1/2" and 3/4" NM cable connectors and a two-gang rectangular device plate
- Weatherproof in use
- Extra duty



Bug Plugs ship installed in all IN BOX styles to seal unused cord hole openings.

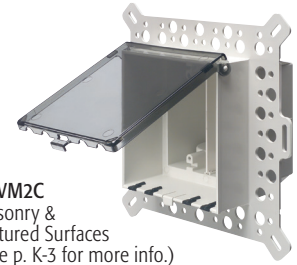


### TWO-GANG IN BOX INCLUDES

Box with extra duty weatherproof in use cover; installed bug plugs; (1) decorator wall plate; and (2) NM cable connectors. DBVM2 also includes a block bushing with washer; and an in place, disposable mud cover. DBVR2 also includes (1) set installation screws; and (1) roll of caulk. DBVS2 also includes (1) set installation screws.



Completed installation, DBVS2C shown.



**DBVM2C**  
Masonry & Textured Surfaces  
(See p. K-3 for more info.)



**DBVR2W**  
Flat Surfaces  
(See p. K-7 for more info.)



**DBVS2C**  
Vinyl Siding  
(See p. K-2 for more info.)

