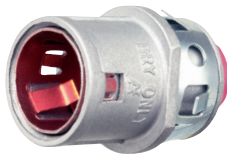
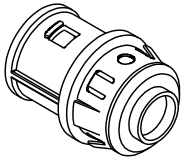




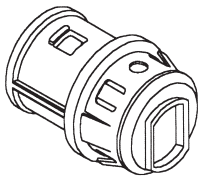
38AST



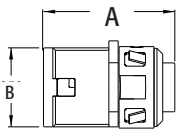
40AST



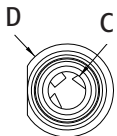
38AST



380AST



38AST



SNAP²IT[®] Connectors

Zinc die-cast. For AC • MCI-A • HCF steel and aluminum cable • Flexible metal conduit steel and aluminum (regular and reduced wall) • MCI cable • Continuous corrugated aluminum • AC90

CATALOG NUMBER	UPC/DCI/NAED MFG #018997	TRADE SIZE	KO SIZE	UNIT PKG	STD PKG	DIM A	DIM B	DIM C	DIM D	CABLE RANGE
38AST*	00070	3/8	1/2	50	500	1.410	.850	.405	1.000	.405 - .612
380ST	00381	3/8	1/2	50	500	1.284	.850	.400	1.000	.405 - .612
380AST*	00382	3/8	1/2	50	500	1.410	.850	.400	1.000	.405 - .612



*Provided with insulated throat. Flexible metal conduit, CSA Listed with anti-short bushing ONLY.

WITH INSULATED THROAT AND **RED TINTED INSIDE CLIP**

CATALOG NUMBER	UPC/DCI/NAED MFG #018997	TRADE SIZE	KO SIZE	UNIT PKG	STD PKG	DIM A	DIM B	DIM C	DIM D	CABLE RANGE
40AST	00041	3/8	1/2	50	500	1.410	.850	.405	1.000	.485 - .612
400AST	40347	3/8	1/2	50	500	1.410	.850	.400	1.000	.485 - .612



Flexible metal conduit, CSA Listed with anti-short bushing ONLY. Refer to chart on page E-27 for list of cable types. See page E-30 and E-31 for MCI-A cable ranges. Concrete tight when taped.

FEATURES AND BENEFITS

- No tools needed
- Safe and fast installations
- Saves about 17 seconds per fitting!
- Competitively priced

SNAP-TITE[®] and SNAP2IT[®] products have been tested and listed by UL in accordance with UL's ground fault requirements. For additional information see page Index-8.

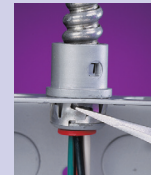
INSTALLATION INSTRUCTIONS

SNAP²IT Connectors are **EASY to Install...**



Snap fitting onto cable and twist clockwise.

And **EASY to Remove...**

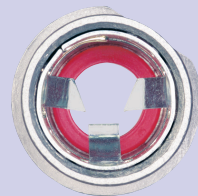


Snap assembly into the box.

For **EASIER** MC/AC Installations see **3810AST** to **7510AST** on page E-2

Using a screwdriver, lift the ring and twist off.

COMPARE...



38AST



40AST

RED TINTING means **'OPEN TANG' Design!**

It gives you more room inside the fitting for easy insertion of wires. The redesigned front end makes it easier than ever to snap the fitting into a box!

