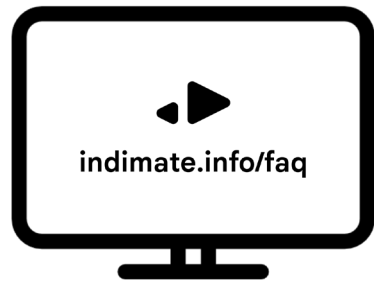


## Support



Issues or questions regarding Indimate?  
Please get in touch: [service@indimate.info](mailto:service@indimate.info)

## Disclaimer

To the maximum extent permitted by applicable law neither Indimate UG nor its suppliers, its subcontractors, its affiliates, officers, directors, employees, dealers or agents shall be liable to you or to any third party for any incidental damage including personal injury or any other damages, whether direct, special, incidental, indirect or consequential arising out of or related to:

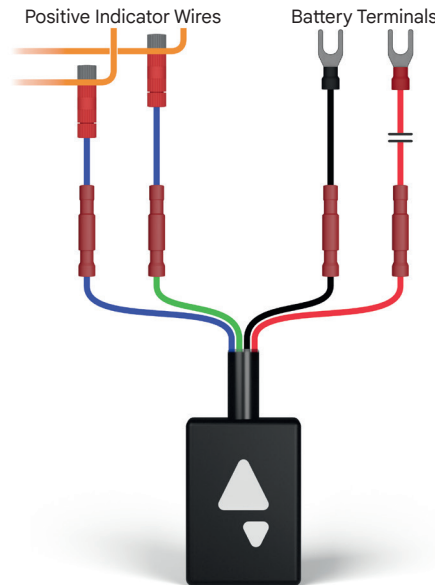
- Indimate not working correctly.
- Any distractions caused by the Indimate device, or the associated smartphone application.
- Damage to the motorcycle due to improper installation and/or improper usage of Indimate.

Correct indicator usage is still the motorcyclist's responsibility, Indimate is only intended to assist the motorcyclist in this regard.

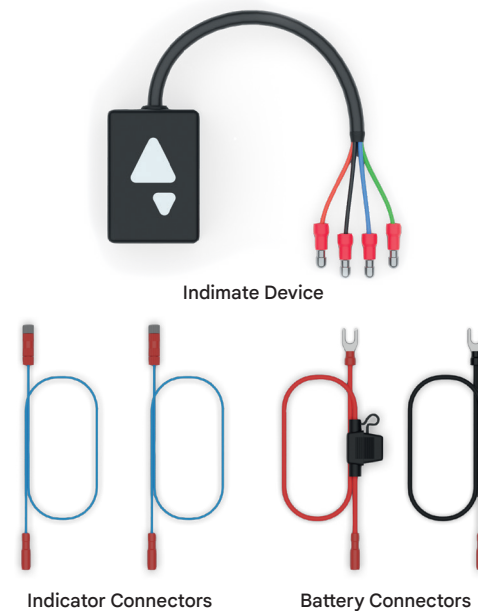
### Read More

To learn more about Indimate, please visit our website at: <https://www.indimate.info>.

## Wiring Diagram



## What's Included



**It's Blinkin' Brilliant!**

**INDIMATE**

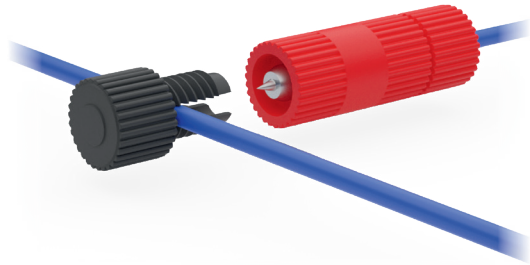
## Step One



Positive Wire  
Usually any colour,  
other than black

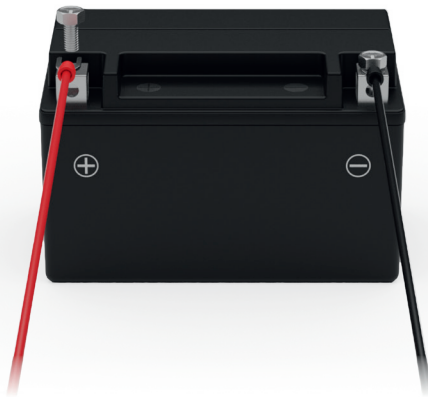
Find the positive wire of your indicators,  
the front or rear indicators will work.

## Step Two



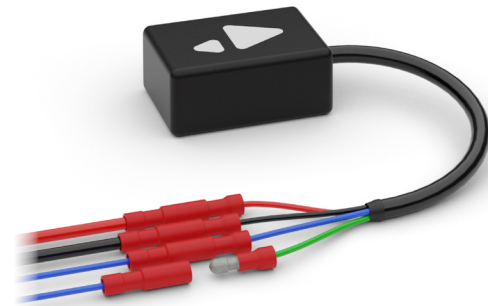
Tap the left and right positive indicator  
wires with the included Posi-Taps™.

## Step Three



Screw the positive and negative fork  
connectors onto your battery terminals.

## Step Four



Connect the Indimate device  
to the four wires you just installed.

## Step Five



Turn an indicator on to power the device up.

Indimate is active when an indicator has  
been turned on. It will "auto-shutdown" if  
you don't use your indicators for 30mins.

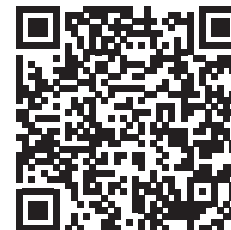
## Step Six



Download the Indimate app,  
and follow the setup instructions.



IOS



Android