

BOX AIR klima

Covers and posts
for electric vehicles
charging stations

www.boxairklima.com

October 2023



Wallbox Cover

The ideal protection for already installed charging stations, Wallbox Cover is easily installed on the wall without touching the existing system.

Protect your electric vehicle charging station or wallbox and solar inverter with the cover from Box Air Klima. Choose quality and reliability to ensure a long lifespan for your device.





Wallboxes exposed to direct sunlight have two enemies:

UV rays discolour and age the plastic, shortening the useful life of the device.

Intense heat reduces the efficiency of the wallbox, increases the time and cost of charging, and can damage electronic components.

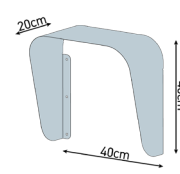


Snow and ice accumulating on the charging station make it uncomfortable to use, if not completely obstructing plugs and controls.

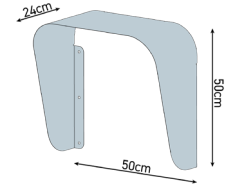
Rain and especially hail can be extremely destructive events, capable of damaging or completely disabling your wallbox.

Our cover is available in two sizes, suitable for most commercially available domestic car charging stations. Here are our suggestions on which size to choose for the most popular wallboxes.

Size S



Size L



ABL eMH1



BMW Wallbox

MINI Wallbox

Rolls Royce Wallbox



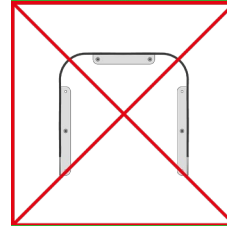
Fiat easyWallbox

Alfa Romeo eWallbox

Jeep easyWallbox



Mercedes-Benz EQ Charger



Morec Wall Box

Green Cell Wallbox



Tesla Wall Connector

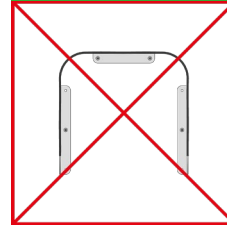


Volkswagen ID. Charger

Audi Wallbox Pro

Skoda iV Charger

Seat/Cupra Charger



Wallbox Pulsar



Wallbox Cover Plus

Protect your wallbox with Box Air Klima's Wallbox Cover Plus, the innovative solution that combines maximum functionality with an exclusive design.

The 6 cm back panel allows you to conceal masonry and neatly connect ducts and wiring, offering a flawless appearance.





Wallbox Cover Plus simplifies installation by covering masonry work and providing solid installation support.

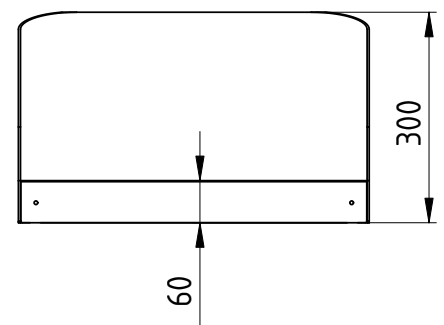
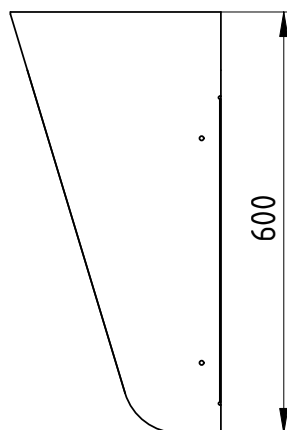
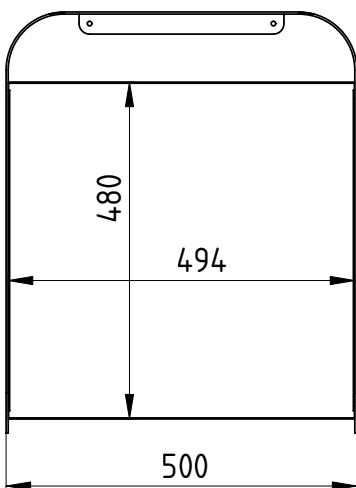
Its aluminium composite structure is easy to drill and cut to connect cables and cable ducts cleanly, for professional installations.

Universal counterplates secure fastening of the wallbox, and the space inside the structure conceals and protects electrical cables.



Wallbox Cover Plus has a useful charging station installation area of 49x48cm, suitable for most domestic wallboxes on the market.

These are just a few examples among dozens of compatible models.



Wallbox Stand

The freedom to place your charging station wherever you want, the convenience of not being constrained by walls, the convenience of not having to drill in the walls of your home.

With its beautiful design and the strength of the aluminium composite arch, Wallbox Stand is the solution you have been looking for for your electric car.





Inside Wallbox Stand, a robust stainless steel frame guarantees strength and durability.

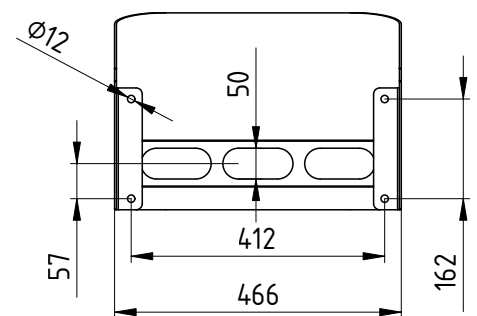
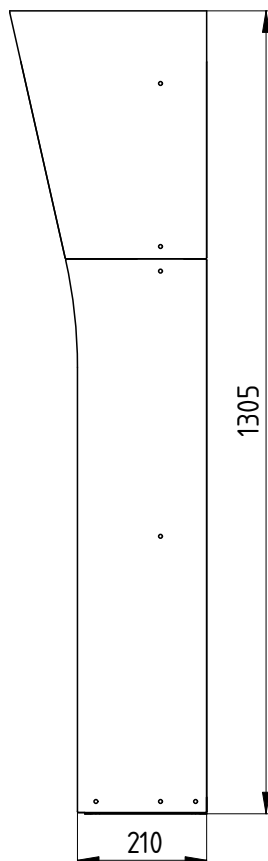
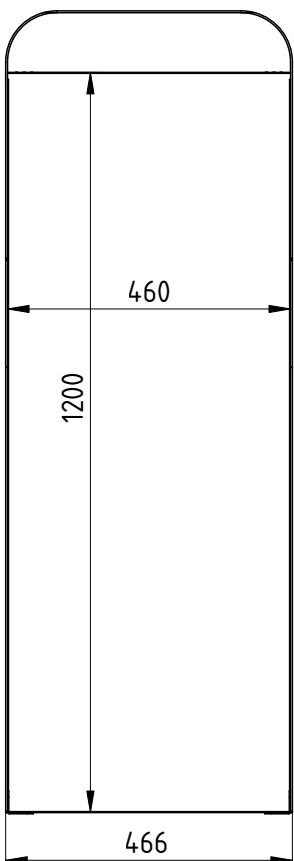
Universal counterplates fixed to the frame ensure a secure fastening of the wallbox, and the space inside the structure conceals and protects electrical cables.



With a width of 46 cm and a large, freely usable surface for mounting the charging station and accessories, Wallbox Stand is compatible with most wallboxes on the market.



In addition to the standard colours, Wallbox Stand can be produced on request in any colour, from classic RAL colours to metallised paints or special colours such as bronze or Corten effect.





www.boxairklima.com

BoxAirKlima is made by:

M2 Work S.r.l.s.

Via Roma n.15

61032 Fano

P.Iva IT 02693340412

Mail:

info@m2work.it

Tel:

[IT]+39 348 7728567

[EN/DE]+39 388 1832602