

# AMERICAN

Copper & Brass, LLC

Since 1986

PLUMBING • HVAC • LP GAS • ELECTRICAL • WATER QUALITY

Q2 FLYER  
APRIL - JUNE  
2024

MEET  
THE  
TEAM  
EDITION

## PVC/DWV FITTINGS

### PVC/DWV Coupling



Part #	Size	Box	Price
A3001	1-1/2"	100	0.53
A3002	2"	100	0.73
A3003	3"	20	2.55
A3004	4"	10	4.33
A3006	6"	5	17.34

### PVC/DWV 22-1/2° Elbow



Part #	Size	Box	Price
A2551	1-1/2"	100	1.74
A2552	2"	20	2.03
A2553	3"	20	5.19
A2554	4"	10	7.29
A2556	6"	5	57.04

### PVC/DWV 45° Elbow



Part #	Size	Box	Price
A2501	1-1/2"	100	1.11
A2502	2"	100	1.66
A2503	3"	20	4.71
A2504	4"	10	8.63
A2506	6"	5	41.40

### PVC/DWV 45° Street Elbow



Part #	Size	Box	Price
A2401	1-1/2"	100	1.07
A2402	2"	100	1.69
A2403	3"	20	4.47
A2404	4"	10	8.87
A2406	6"	5	49.03

### PVC/DWV 90° Elbow



Part #	Size	Box	Price
A2251	1-1/2"	100	1.13
A2252	2"	100	1.79
A2253	3"	20	5.26
A2254	4"	10	10.39
A2256	6"	5	47.24

### PVC/DWV 90° Street Elbow



Part #	Size	Box	Price
A2451	1-1/2"	100	1.47
A2452	2"	100	2.26
A2453	3"	20	6.28
A2454	4"	10	10.49
A2456	6"	5	25.74

### PVC/DWV 90° Long Sweep Elbow



Part #	Size	Box	Price
A2277	2"	80	2.94
A2278	3"	20	6.76

### PVC/DWV WYE



Part #	Size	Box	Price
A2301	1-1/2"	25	3.60
A2302	2"	20	3.55
A2303	3"	20	9.60
A2304	4"	5	17.41
A2306	6"	5	65.29

### PVC/DWV Sanitary Tee



Part #	Size	Box	Price
A2151	1-1/2"	20	1.98
A2152	2"	20	2.92
A2153	3"	20	7.66
A2154	4"	10	15.46
A2156	6"	5	72.96

### PVC/DWV P-Trap - Solvent Weld



Part #	Size	Box	Price
A3201	1-1/2"	20	5.14
A3202	2"	20	6.27
A3203	3"	10	21.15
A3204	4"	5	50.93

### PVC/DWV Cap



Part #	Size	Box	Price
A3081	1-1/2"	100	1.08
A3082	2"	100	1.29
A3083	3"	20	4.50
A3084	4"	10	8.31
A3086	6"	5	20.00

## NEED PIPE?

We have Plain End PVC Pipe  
**READY TO SHIP TODAY!**

- Schedule 40
- Foam Core

**CALL FOR PRICING:**  
**(800) 624-8296**



Get to know our team  
with **OVER 336 YEARS**  
of Industry Experience!  
Look inside to see their  
smiling faces!

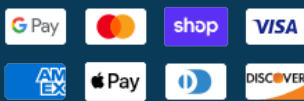


- PVC Pressure 40
- Pipe Cement / Hangers & Plates
- Copper Fittings
- Copper Press Fittings
- PEX Fittings
- PEX Tubing / PEX Accessories
- Black Pipe Fittings
- Valves
- Kitchen / Bath / Laundry
- Water Quality / Food & Beverage
- LP Gas
- Push-to-Connect Fittings
- Electrical / Lighting
- Locations / About Us

**WE SHIP ANYWHERE IN THE USA!**

**WALK-IN COUNTER LOCATIONS**

- COLDWATER, MI
- HILLSDALE, MI
- TRAVERSE CITY, MI
- WAUKESHA, WI
- MAYODAN, NC
- ORLANDO, FL



P: (800) 624-8296 • F: (800) 439-7752  
Shop Online: ACandB.com • Sales@ACandB.com



**48 Years » Industry Pro**  
**David Tuttle**  
Outside Sales  
(586) 944-3065  
dtuttle@acandb.com



**7 Years » Industry Pro**  
**Amanda Grace**  
Customer Concierge / Inside Sales  
(517) 797-2046  
agrace@acandb.com



**10 Years » Industry Pro**  
**Ian Lockway**  
Customer Concierge / Inside Sales  
(945) 203-2054  
ilockway@acandb.com



**8 Years » Industry Pro**  
**Tefeny Simmons**  
Customer Concierge / Inside Sales  
(945) 203-2049  
tsimmons@acandb.com



**7 Years » Industry Pro**  
**Ryan Hiller**  
Outside Sales  
(517) 607-9027  
rhiller@acandb.com

**PVC Coupling**



Part #	Size	Box	Each
429-005	1/2"	100	0.23
429-007	3/4"	50	0.33
429-010	1"	50	0.59
429-012	1-1/4"	25	0.76
429-015	1-1/2"	25	0.87
429-131	1-3/4"	25	1.19

**PVC Deep Socket Coupling**



Part #	Size	Box	Each
479-020	2"	60	4.81
479-030	3"	15	4.25

**PVC Reducing Coupling**



Part #	Size	Box	Each
429-131	1" x 3/4"	50	1.19
429-292	2-1/2" x 2"	10	7.76

**PVC Slip 45° Elbow**



Part #	Size	Box	Each
417-005	1/2"	50	0.68
417-007	3/4"	50	0.96
417-010	1"	50	1.23
417-015	1-1/2"	25	1.68
417-020	2"	25	2.71

**PVC 90° Elbow**



Part #	Size	Box	Each
406-005	1/2"	50	0.37
406-007	3/4"	50	0.43
406-010	1"	50	0.74
406-012	1-1/4"	25	1.33
406-015	1-1/2"	25	1.42
406-020	2"	25	2.36

**PVC 90° Street Elbow**



Part #	Size	Box	Each
409-005	1/2"	50	1.10
409-007	3/4"	50	1.33
409-010	1"	50	2.36

**PVC 90° Slip Tee**



Part #	Size	Box	Each
401-005	1/2"	50	0.47
401-007	3/4"	50	0.53
401-020	2"	25	2.75

**PVC Female Adapter**



Part #	Size	Box	Each
435-005	1/2"	100	0.40
435-007	3/4"	50	0.53
435-010	1"	50	0.61
435-015	1-1/2"	25	1.14

**PVC Male Adapter**



Part #	Size	Box	Each
436-005	1/2"	100	0.34
436-007	3/4"	50	0.37
436-010	1"	50	0.67
436-012	1-1/4"	25	0.87
436-015	1-1/2"	25	1.09
436-020	2"	25	1.56

**PVC Red Bushing (MIP x FIP)**



Part #	Size	Box	Each
439-072	1/2" MIP x 1/4" FIP	50	1.75
439-101	3/4" MIP x 1/2" FIP	50	1.14
439-131	1" MIP x 3/4" FIP	50	1.60

**PVC Red Bushing (SPGT x SLIP)**



Part #	Size	Box	Each
437-101	3/4" x 1/2"	100	0.42
437-131	1" x 3/4"	100	0.74
437-251	2" x 1-1/2"	25	1.67
437-292	2-1/2" x 2"	10	2.81

**PVC Red Bushing (SPGT x T)**



Part #	Size	Box	Each
438-101	3/4" SP x 1/2" FIP	100	0.68
438-130	1" SPGT x 1/2" FIP	100	1.03
438-131	1" SPGT x 3/4" FIP	100	1.00
438-167	1" 1/4 SP x 3/4" FIP	25	1.83
438-248	2" SPGT x 3/4" FIP	10	2.45

**PVC MIP Plug**



Part #	Size	Box	Each
450-005	1/2"	50	1.03
450-007	3/4"	50	1.14
450-010	1"	50	1.82



**Clear Regular Cement - PVC**



Part #	Size	Box	Each
A7015-32	32 oz.	12	13.52

**Purple Primer - PVC**



Part #	Size	Box	Each
A8015-32	32 oz.	12	13.16



Medium Clear Cement - PVC



Part #	Size	Box	Each
A3101-16	16 oz.	24	9.84
A3102-32	32 oz.	12	15.22

Heavy Duty Clear Cement - PVC



Part #	Size	Box	Each
A3086-8	8 oz	24	7.64
A3087-16	16 oz	24	12.60
A3108-32	32 oz	12	18.70

All Weather Medium Clear Cement - PVC



Part #	Size	Box	Each
A3113-32	32 oz	12	16.92

Clear Primer - PVC



Part #	Size	Box	Each
A3050-4	4 oz	24	4.33
A3051-8	8 oz	24	6.37
A3052-16	16 oz	24	12.24
A3053-32	32 oz	12	17.49
A3054-G	1 Gallon	1	49.00

Purple Primer - PVC



Part #	Size	Box	Each
A3075-4	4 oz	24	4.38
A3073-8	8 oz	24	6.52
A3076-16	16 oz	24	12.24
A3075-32	32 oz	12	17.49

Nominal Tube Clamp - Copper-plated



Part #	Size	Bag	Each
PS120058C	5/8"	10	.93
PS120012C	1/2"	10	2.61
PS120034C	3/4"	10	2.73
PS12001C	1"	10	3.08
PS1200114C	1-1/4"	10	3.56
PS1200112C	1 1/2"	10	3.66
PS12002C	2"	10	4.39
PS1200212C	2-1/2"	10	1.98
PS12003C	3"	10	1.90
PS12004C	4"	10	2.82

Nominal Tube Clamp - Galvanized



Part #	Size	Bag	Each
PS110012G	1/2"	10	1.43
PS110034G	3/4"	10	1.49
PS11001G	1"	10	1.71
PS1100114G	1-1/4"	10	1.91
PS1100112G	1 1/2"	10	2.37
PS11002G	2"	10	2.52
PS11003G	3"	10	3.10
PS11004G	4"	10	4.04

Standard Pipe Clamps (5-Pack)



Part #	Size	Bag	Each
A559-2	1/2"	100	0.19
A559-3	3/4"	100	0.22
A559-4	1"	50	0.51
A559-6	1-1/2"	25	0.90

Suspension Pipe Clamps



Part #	Size	Bag	Each
A557-2	1/2"	100	0.19
A557-3	3/4"	100	0.23
A557-4	1"	50	0.43
A557-6	1-1/2"	25	1.19

FHA Plate - 12 Gauge



Part #	Size	Box	Price
FHA912	3" x 9"	25	1.45

PickUp Tube Talon w/ Nail



Part #	Size	Bag	Each
A552-L	1/2"	100	0.06
A553-L	3/4"	100	0.09
A554-L	1"	50	0.27
A555-L	1/2" & 3/4"	100	0.08

Galvanized Tube Strap



Part #	Size	Bag	Each
G-440-1/2	1/2"	100	0.09
G-440-3/4	3/4"	100	0.12
G-440-1	1"	100	0.22
G-440-1-1/4	1-1/4"	50	0.28
G-440-1-1/2	1-1/2"	50	0.32
G-440-2	2"	50	0.32

Pipe / Duct Strap



Part #	Size	Box	Each
APS24	3/4" x 10' Galv.	10	1.31
APS24-C	3/4" x 10' Copper	10	2.56
DS24	3/4" x 10' Duct	10	1.41
APS24-100	3/4" x 100' Galv.	1	11.05

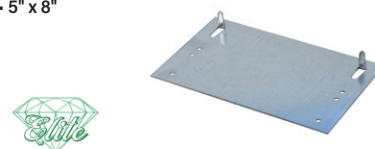
Nylon Cable Ties



Part #	Size	Bag	Each
NT11-50BK	11" 50 lb - Black	100	4.46
NT11-50N	11" 50 lb - Natural	100	4.35
NT7-50BK	7.5" 50 lb - Black	100	2.33
NT7-50N	7.5" 50 lb - Natural	100	2.27
NT8-40BK	8" 40 lb - Black	100	3.15
NT8-40N	8" 40 lb - Natural	100	3.08

Safety Plate - 16 Gauge

• 5" x 8"



Part #	Size	Box	Price
P58-16-2	No barbs	50	1.06
P58-16-SN	Self-nailing	25	1.17



**22 Years » Industry Pro**  
**Jim Roman**  
 Customer Concierge / Inside Sales  
 (945) 203-2048  
 jroman@acandb.com



**10 Years » Industry Pro**  
**Shari Crouch**  
 Customer Concierge / Inside Sales  
 (945) 203-2053  
 scrouch@acandb.com



**14 Years » Industry Pro**  
**Tim Brantley**  
 Sales Manager  
 (231) 944-7133  
 tbrantley@acandb.com



**5 Years » Industry Pro**  
**Casey Warner**  
 Customer Concierge / Inside Sales  
 (517) 797-2043  
 cwarner@acandb.com



**22 Years » Industry Pro**  
**Monty Cruse**  
 Outside Sales  
 (321) 594-2806  
 mcruse@acandb.com





**MADE IN USA**



**40 Years » Industry Pro**

**Phil Whiting**

Outside Sales  
(413) 552-7044

pwhiting@acandb.com



**6 Years » Industry Pro**

**Amy Wilkinson**

Customer Concierge / Inside Sales  
(517) 610-5708

awilkinson@acandb.com



**10 Years » Industry Pro**

**Franz Valencia**

Outside Sales  
(321) 474-9850

fvalencia@acandb.com



**6 Months » Industry Pro**

**Tara Bauerly**

Outside Sales  
(517) 797-2047

tbauerly@acandb.com



**35 Years » Industry Pro**

**Steven Timmer**

Outside Sales  
(616) 223-6332

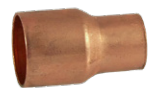
stimmer@acandb.com

## Coupling w/Stop



Part #	Size	Bag	Each
100-F	1/2"	25	0.46
100-K	3/4"	50	0.91
100-M	1"	25	1.81
100-Q	1-1/4"	10	3.10
100-R	1-1/2"	10	4.18

## Reducing Coupling



Part #	Size	Bag	Each
101R-KF	3/4" x 1/2"	25	1.91
101R-MF	1" x 1/2"	5	3.50
101R-MK	1" x 3/4"	10	2.91
101R-QM	1-1/4" x 1"	5	4.03
101R-RQ	1-1/2" x 1-1/4"	5	6.68

## 45° Elbow



Part #	Size	Bag	Each
106-F	1/2"	100	1.10
106-K	3/4"	50	1.86
106-M	1"	25	4.68
106-Q	1-1/4"	10	6.27
106-R	1-1/2"	10	7.70

## 90° Street Elbow



Part #	Size	Bag	Each
107C-2-F	1/2"	100	0.92
107C-2-K	3/4"	50	1.94
107C-2-M	1"	25	4.96

## 90° Street Elbow (Short Radius)



Part #	Size	Bag	Each
107C-F	1/2"	100	0.61
107C-K	3/4"	50	1.34
107C-M	1"	20	3.29
107C-Q	1-1/4"	10	4.88
107C-R	1-1/2"	10	7.61

## Tee



Part #	Size	Bag	Each
111-F	1/2"	50	1.02
111-K	3/4"	25	2.47
111-M	1"	10	7.39
111-Q	1-1/4"	5	10.19
111-R	1-1/2"	5	15.39

## Reducing Tee



Part #	Size	Bag	Each
111RR-KFF	3/4" x 1/2" x 1/2"	25	2.88
111RR-KFK	3/4" x 1/2" x 3/4"	25	2.88
111RR-MKK	1" x 3/4" x 3/4"	10	8.99

## Female Adapter



Part #	Size	Bag	Each
103-F	1/2"	25	1.99
103-K	3/4"	25	2.73
103-M	1"	20	6.23
103-Q	1-1/4"	10	9.04
103-R	1-1/2"	10	14.13

## Reducing Female Adapter



Part #	Size	Bag	Each
103R-FK	1/2" x 3/4"	25	4.26
103R-KF	3/4" x 1/2"	25	4.26
103R-MK	1" x 3/4"	10	8.40

## Male Adapter

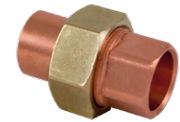


Part #	Size	Bag	Each
104-F	1/2"	25	1.26
104-K	3/4"	25	2.10
104-M	1"	20	5.37
104-Q	1-1/4"	10	7.72
104-R	1-1/2"	10	9.04

## IMPORT OPTIONS ARE AVAILABLE

Please contact your Customer Concierge for more information.

## Union



Part #	Size	Bag	Each
8733-F	1/2"	25	9.64
8733-K	3/4"	100	12.12
8733-M	1"	10	20.40

## Cap



Part #	Size	Bag	Each
117-F	1/2"	100	0.44
117-K	3/4"	50	0.81
117-M	1"	10	1.91
117-Q	1-1/4"	10	2.52
117-R	1-1/2"	10	3.69

## Canfield Solder



Part #	Size	Box	Each
A33-3-1	50/50	50	20.13
A33-4	95/5 Lead-free	50	33.54
A33-973	97/3 Lead-free	50	36.20
A33-LF	100% Lead-free	50	41.80
A33-SB	SilverFlo LF	50	37.05

## No.5 Solder Paste



Part #	Size	Box	Each
AOT5-2	2 oz	12	2.12
AOT5-4	4 oz	24	3.97
AOT5-8	8 oz	24	5.96
AOT5-16	16 oz	24	9.21

## Coupling



Part #	Size	Bag	Each
PC600DS-F	1/2"	10	2.91
PC600DS-K	3/4"	10	4.40
PC600DS-M	1"	5	8.88
PC600DS-Q	1-1/4"	5	11.43
PC600DS-R	1-1/2"	5	20.91

## Fitting Reducer



Part #	Size	Bag	Each
PC600-2-F	1/2"	10	5.18
PC600-2-K	3/4"	5	6.19
PC600-2-KF	3/4" x 1/2"	5	3.34
PC600-2-M	1"	5	4.62
PC600-2-MF	1" x 3/4"	5	8.72
PC600-2-MK	1" x 1/2"	5	8.89
PC600-2-QK	1-1/4" x 3/4"	5	4.66
PC600-2-QM	1-1/4" x 1"	5	12.06

## 90° Elbow



Part #	Size	Bag	Each
PC607-F	1/2"	10	3.17
PC607-K	3/4"	10	5.22
PC607-M	1"	5	10.48
PC607-Q	1-1/4"	5	21.11
PC607-R	1-1/2"	5	39.98

## 90° Street Elbow



Part #	Size	Bag	Each
PC607-2-F	1/2"	10	3.35
PC607-2-K	3/4"	10	5.43
PC607-2-M	1"	5	12.47

## Male Adapter



Part #	Size	Bag	Each
PC604-F	1/2"	5	3.80
PC604-K	3/4"	5	6.84
PC604-M	1"	5	12.80
PC604-Q	1-1/4"	5	27.46
PC604-R	1-1/2"	5	38.51

## Female Adapter



Part #	Size	Bag	Each
PC603-F	1/2"	5	4.76
PC603-K	3/4"	5	7.43
PC603-M	1"	5	14.23
PC603-Q	1-1/4"	5	32.66
PC603-R	1-1/2"	5	45.76

## Tee



Part #	Size	Bag	Each
PC611-F	1/2"	10	4.93
PC611-K	3/4"	20	8.65
PC611-M	1"	5	15.89
PC611-Q	1-1/4"	5	27.39
PC611-R	1-1/2"	5	52.16

## Reducing Tee



Part #	Size	Bag	Each
PC611R-KKF	3/4" x 3/4" x 1/2"	5	7.57
PC611R-MMK	1" x 1" x 3/4"	5	18.08
PC611R-MMF	1" x 1" x 1/2"	5	18.52
PC611R-QQM	1-1/4" x 1-1/4" x 1"	5	26.49
PC611R-QQK	1-1/4" x 1-1/4" x 3/4"	5	25.04
PC611R-QQF	1-1/4" x 1-1/4" x 1/2"	5	23.34

## Cap



Part #	Size	Bag	Each
PC617-F	1/2"	5	6.11
PC617-K	3/4"	5	10.50
PC617-M	1"	5	16.21

## Press x PEX Adapter



Part #	Size	Bag	Each
PC604-P-F	1/2"	5	5.03
PC604-P-K	3/4"	5	8.58
PC604-P-M	1"	5	14.06

## Full Port Press Ball Valve

- Press x Press
- Full port
- Solid brass body
- 2" = Webstone brand



Part #	Size	Box	Each
PLF8900-1/2	1/2"	10	8.40
PLF8900-3/4	3/4"	10	13.31
PLF8900-1	1"	6	20.10

Part #	Size	Box	Each
PLF8900-11/4	1-1/4"	4	30.83
PLF8900-11/2	1-1/2"	4	41.24
PLF8900-2	2" <b>Webstone</b>	2	133.43



- Compatible with PEX, copper, CPVC, PE-RT and SDR-9 HDPE pipe in any combination
- Does not require special tools, crimping, glue or soldering
- Can be installed in wet lines
- Are approved for underground and behind-the-wall applications with no access panels (wrapping required when burying underground)
- 25-year warranty

## Coupling



Part #	Size	Bag	Each
U008	1/2"	12	6.85
U016	3/4"	12	8.22
U020	1"	6	15.62

## 90° Elbow



Part #	Size	Bag	Each
U248	1/2"	12	7.67
U256	3/4"	12	9.59
U260	1"	3	17.81

## Female Adapter



Part #	Size	Bag	Each
U072	1/2"	12	5.75
U088	3/4"	6	6.58
U094	1"	6	12.05

## Tee



Part #	Size	Bag	Each
U362	1/2"	12	10.68
U370	3/4"	12	12.60
U374	1"	3	23.56



**35 Years » Industry Pro**  
**Tim Cullen**  
 Outside Sales  
 (847) 721-3070  
 tcullen@acandb.com



**6 Years » Industry Pro**  
**Regina Herdacia**  
 Customer Concierge / Inside Sales  
 (945) 203-2047  
 rherdacia@acandb.com



**30 Years » Industry Pro**  
**Lou Raymond**  
 Outside Sales  
 (484) 368-7996  
 lraymond@acandb.com



**2 Years » Industry Pro**  
**Christin Gonzales**  
 Customer Concierge / Inside Sales  
 (517) 797-2037  
 cgonzalez@acandb.com



**19 Years » Industry Pro**  
**Brian Auseon**  
 Customer Concierge / Inside Sales  
 (517) 885-3954  
 bauseon@acandb.com

**F 1960 EXPANSION PEX PLASTIC**

**Coupling**



Part #	Size	Bag	Each
EPLXC33	1/2"	25	1.17
EPLXC43	3/4" x 1/2"	25	1.71
EPLXC44	3/4"	10	1.55
EPLXC54	1" x 3/4"	25	3.19
EPLXC55	1"	25	3.09

**Elbow**



Part #	Size	Bag	Each
EPLXE33	1/2"	25	1.62
EPLXE43	3/4" x 1/2"	10	2.18
EPLXE44	3/4"	10	2.04
EPLXE55	1"	10	4.53

**Tee**



Part #	Size	Bag	Each
EPLXT333	1/2"	25	1.62
EPLXT444	3/4"	10	2.94
EPLXT555	1"	10	5.47
EPLXT334	1/2" x 1/2" x 3/4"	25	2.44
EPLXT433	3/4" x 1/2" x 1/2"	10	2.31
EPLXT434	3/4" x 1/2" x 3/4"	10	2.71
EPLXT443	3/4" x 3/4" x 1/2"	10	2.44

**PEX x Male Adapter**



Part #	Size	Bag	Each
EPLXMA33	1/2"	25	1.55

**Plug**



Part #	Size	Bag	Each
EPLXP3	1/2"	50	0.90
EPLXP4	3/4"	25	1.19
EPLXP5	1"	25	2.31

**F 1807 CRIMP PEX BRASS**

**Coupling**



Part #	Size	Bag	Each
PXC33	1/2"	25	0.60
PXC44	3/4"	25	1.22
PXC55	1"	25	2.11

**Elbow**



Part #	Size	Bag	Each
PXE33	1/2"	25	1.01
PXE44	3/4"	25	1.84
PXE55	1"	25	3.36

**Tee**



Part #	Size	Bag	Each
PXT333	1/2"	25	1.65
PXT444	3/4"	25	2.28
PXT555	1"	25	4.60

**Male Adapter**



Part #	Size	Bag	Each
PXA33BT	1/2" x 1/2" MPT	50	1.73
PXA44BT	3/4" x 3/4" MPT	50	2.50
PXA45BT	3/4" x 1" MPT	50	4.57
PXA55BT	1" x 1" MPT	50	4.45

**Female Adapter**



Part #	Size	Bag	Each
PXNS33BT	1/2" x 1/2" FPT	50	2.33
PXNS44BT	3/4" x 3/4" FPT	50	2.93

**F 1807 CRIMP PEX PLASTIC**

**Coupling**



Part #	Size	Bag	Each
PLXC33	1/2"	50	0.38
PLXC44	3/4"	50	0.61
PLXC55	1"	25	1.19

**Elbow**



Part #	Size	Bag	Each
PLXE33	1/2"	25	0.54
PLXE44	3/4"	25	1.06
PLXE55	1"	25	2.39

**Tee**



Part #	Size	Bag	Each
PLXT333	1/2"	25	0.74
PLXT444	3/4"	25	1.51
PLXT555	1"	25	3.09

**Plug**



Part #	Size	Bag	Each
PLXP3	1/2"	100	0.34
PLXP4	3/4"	100	0.55

**PEX x Sweat Copper Elbows**



Part #	Size	Bag	Each
<b>MALE ELBOWS</b>			
PXE33MS	1/2"	25	1.58
PXE44MS	3/4"	25	1.98
<b>FEMALE ELBOWS</b>			
PXE33FS	1/2"	25	1.58
PXE44FS	3/4"	25	2.29



**Blue Expansion PEX Coil**



Part #	Size	Coil	Each
EPX12BC100	1/2" x 100'	1	27.51
EPX12BC300	1/2" x 300'	1	83.66
EPX12BC500	1/2" x 500'	1	139.43
EPX34BC100	3/4" x 100'	1	51.03
EPX34BC300	3/4" x 300'	1	153.11
EPX34BC500	3/4" x 500'	1	255.18
EPX1BC100	1" x 100'	1	93.13
EPX1BC300	1" x 300'	1	279.39
EPX1BC500	1" x 500'	1	465.65

**Red Expansion PEX Coil**



Part #	Size	Coil	Each
EPX12RC100	1/2" x 100'	1	27.51
EPX12RC300	1/2" x 300'	1	83.66
EPX12RC500	1/2" x 500'	1	139.43
EPX34RC100	3/4" x 100'	1	51.03
EPX34RC300	3/4" x 300'	1	153.11
EPX34RC500	3/4" x 500'	1	255.18
EPX1RC100	1" x 100'	1	93.13
EPX1RC300	1" x 300'	1	279.39
EPX1RC500	1" x 500'	1	465.65

**White Expansion PEX Coil**



Part #	Size	Coil	Each
EPX18WC100	1/8" x 100'	1	20.52
EPX14WC100	1/4" x 100'	1	26.65
EPX12WC100	1/2" x 100'	1	27.51
EPX12WC300	1/2" x 300'	1	83.66
EPX12WC500	1/2" x 500'	1	139.43
EPX34WC100	3/4" x 100'	1	51.03
EPX34WC300	3/4" x 300'	1	153.11
EPX34WC500	3/4" x 500'	1	255.18
EPX1WC100	1" x 100'	1	93.13
EPX1WC300	1" x 300'	1	279.39

**Blue Expansion PEX Stick**



Part #	Size	Stick	Each
EPX12BS10	1/2" x 10'	1	2.99
EPX12BS20	1/2" x 20'	1	5.99
EPX34BS10	3/4" x 10'	1	5.56
EPX34BS20	3/4" x 20'	1	11.12
EPX1BS10	1" x 10'	1	10.09
EPX1BS20	1" x 20'	1	20.18

**Red Expansion PEX Stick**



Part #	Size	Stick	Each
EPX12RS10	1/2" x 10'	1	2.99
EPX12RS20	1/2" x 20'	1	5.99
EPX34RS10	3/4" x 10'	1	5.56
EPX34RS20	3/4" x 20'	1	11.12
EPX1RS10	1" x 10'	1	10.09
EPX1RS20	1" x 20'	1	20.18

**White Expansion PEX Stick**



Part #	Size	Stick	Each
EPX12WS10	1/2" x 10'	1	2.99
EPX12WS20	1/2" x 20'	1	5.99
EPX34WS10	3/4" x 10'	1	5.56
EPX34WS20	3/4" x 20'	1	11.12
EPX1WS10	1" x 10'	1	10.09
EPX1WS20	1" x 20'	1	20.18

**F1960 PEX Brass Ball Valve**

- F1960 Expansion PEX
- Standard port
- Lead-free



Part #	Size	Box	Each
PXV33	1/2"	10	4.47
PXV44	3/4"	10	5.98
PXV55	1"	6	10.17

**F1807 PEX x Sweat Brass Ball Valve**

- F1807 Crimp PEX x Sweat
- Standard port
- Lead-free



Part #	Size	Box	Each
PXVSP33	1/2" PEX x C	12	6.46
PXVSP44	3/4" PEX x C	12	7.10
PXVSP55	1" PEX x C	6	12.44

**PEX Clamp Rings - Stainless Steel**

- F1960 Expansion PEX
- Standard port
- Lead-free



Part #	Size	Bag	Each
71204	1/2"	100	0.29
71206	3/4"	50	0.43
71207	1"	50	0.58

**PowerPEX® Copper Sweat Adapters**



Part #	Size	Bag	Each
644X2	1/2"	50	0.63
644X3	3/4"	50	1.10
644X32	1/2" x 3/4"	50	2.45
644X34	3/4" x 1"	50	2.79
644X4	1"	25	2.79

**PEX Crimp Rings - Copper**



Part #	Size	Bag	Each
PXR3	1/2"	1000	0.15
PXR4	3/4"	500	0.23
PXR5	1"	250	0.28

**Combo Standard Crimp Tool**

- For use F1807 Crimp PEX
- 1/2" - 3/4" Combo
- Straight composite handles
- Go/No-Go gauge provided



Part #	Size	Box	Each
AHAD4	1/2" - 3/4"	1	123.55



**Full Port Ball Valve**

- IPS



Part #	Size	Box	Each
A8800-1/4	1/4" IPS	10	4.58
A8800-3/8	3/8" IPS	10	4.58
A8800-1/2	1/2" IPS	10	4.95
A8800-3/4	3/4" IPS	10	8.30
A8800-1	1" IPS	4	11.98
A8800-1-1/2	1-1/4" IPS	4	19.61
A8800-1-1/4	1-1/2" IPS	4	25.85
A8800-2	2" IPS	2	43.60

**Full Port Ball Valve**

- IPS



Part #	Size	Box	Each
LF8800-1/4	1/4" IPS	10	6.92
LF8800-3/8	3/8" IPS	10	6.18
LF8800-1/2	1/2" IPS	10	5.79
LF8800-3/4	3/4" IPS	10	10.75
LF8800-1	1" IPS	4	15.59
LF8800-11/2	1-1/4" IPS	4	25.51
LF8800-11/4	1-1/2" IPS	4	33.64
LF8800-2	2" IPS	2	46.41

**Full Port Ball Valve**

- CxC



Part #	Size	Box	Each
A8900-1/2	1/2" CxC	10	4.48
A8900-3/4	3/4" CxC	10	8.30
A8900-1	1" CxC	4	12.54
A8900-1-1/4	1-1/4" CxC	4	20.64
A8900-1-1/2	1-1/2" CxC	4	29.76
A8900-2	2" CxC	2	32.09

**Full Port Ball Valve**

- CxC



Part #	Size	Box	Each
LF8900-1/2	1/2" CxC	10	5.79
LF8900-3/4	3/4" CxC	10	9.71
LF8900-1	1" CxC	6	15.59
LF8900-11/4	1-1/4" CxC	4	25.51
LF8900-11/2	1-1/2" CxC	4	30.34
LF8900-2	2" CxC	2	55.92
LF8900-3	3" CxC	1	154.64

**Full Port Ball Valve**

- Press x Press
- Full port
- Solid brass body
- 2" = Webstone brand



Part #	Size	Box	Each
PLF8900-1/2	1/2"	10	8.40
PLF8900-3/4	3/4"	10	13.31
PLF8900-1	1"	6	20.10
PLF8900-11/4	1-1/4"	4	30.83
PLF8900-11/2	1-1/2"	4	41.24
PLF8900-2	2" <b>Webstone</b>	2	133.43

**Full Port Push-Fit Ball Valve**

- Press x Press



Part #	Size	Box	Each
SBV12	1/2"	12	18.26
SBV34	3/4"	12	23.25
SBV1	1"	6	23.37

**Hose Bibb - 1/4 Turn**

- MIP
- Packing nut included



Part #	Size	Box	Each
A8136-1/2	1/2" MIP	10	9.37
A8136-3/4	3/4" MIP	10	14.46

**Boiler Drain**

- MIP x Solder



Part #	Size	Box	Each
A8171-1/2	1/2" MIP	10	3.58
A8171-3/4	3/4" MIP	10	3.93

**Boiler Drain**

- MIP x Solder



Part #	Size	Box	Each
LF8171-1/2	1/2" CxC	10	4.91
LF8171-3/4	3/4" CxC	10	5.40

**Swing Check Valve**

- Solid brass
- C x C
- 125 psi



Part #	Size	Box	Each
A8152-1/2	1/2" CxC	10	7.50
A8152-3/4	3/4" CxC	10	9.58
A8152-1	1" CxC	6	20.29

**In-Line Spring Check Valve**

- Cast bronze
- FIP
- 400 WOG



Part #	Size	Each	Each
W601-1/2	1/2" FIP	1	35.76
W601-3/4	3/4" FIP	1	32.51
W601-1	1" FIP	1	34.20
W601-1-1/4	1-1/4" FIP	1	46.05
W601-1-1/2	1-1/2" FIP	1	66.94

**In-Line PVC Check Valve**

- Schedule 40 PVC
- 1/2 lb stainless steel spring
- Not suitable for compressed air



Part #	Size	Each	Each
203-103	1/2" FIP	1	4.95
203-104	3/4" FIP	1	5.61
203-105	1" FIP	1	8.05
203-106	1-1/4" FIP	1	7.60





- Black malleable iron
- Resistant to high temperatures
- 150 class
- Working Pressure: 300 psi



**Banded Coupling**



Part #	Size	Box	Each
M-103F	1/2"	60	1.05
M-103K	3/4"	50	1.24
M-103M	1"	25	1.88

**Banded Reducing Coupling**



Part #	Size	Box	Each
M-119FC	1/2" x 1/4"	50	1.14
M-119FE	1/2" x 3/8"	40	1.08
M-119KF	3/4" x 1/2"	60	1.24
M-119MF	1" x 1/2"	30	1.92
M-119MK	1" x 3/4"	25	1.92
M-119QM	1-1/4" x 1"	30	2.41

**45° Elbow**



Part #	Size	Box	Each
M-125F	1/2"	50	1.27
M-125K	3/4"	40	1.54
M-125M	1"	30	1.97

**90° Elbow**



Part #	Size	Box	Each
M-100F	1/2"	50	0.77
M-100K	3/4"	35	0.94
M-100M	1"	20	1.65

**90° Street Elbow**



Part #	Size	Box	Each
M-116F	1/2"	50	1.61
M-116K	3/4"	40	1.57
M-116M	1"	10	2.25

**Tee**



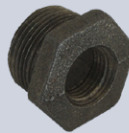
Part #	Size	Box	Each
M-101F	1/2"	40	1.01
M-101K	3/4"	35	1.44
M-101M	1"	20	2.54

**Reducing Tee**



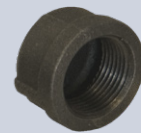
Part #	Size	Box	Each
M-101KFF	3/4" x 1/2" x 1/2"	25	2.29
M-101KFK	3/4" x 1/2" x 3/4"	20	2.54
M-101KKF	3/4" x 3/4" x 1/2"	20	2.22
M-101MMK	1" x 3/4" x 3/4"	21	2.82

**Reducing Bushing**



Part #	Size	Box	Each
M-110EC	3/8" x 1/4"	75	1.38
M-110FE	1/2" x 3/8"	100	1.38
M-110KF	3/4" x 1/2"	50	1.25
M-110MF	1" x 1/2"	50	1.30
M-110MK	1" x 3/4"	50	1.30
M-110QM	1-1/4" x 1"	20	1.85
M-110RQ	1-1/2" x 1-1/4"	25	2.12
M-110SR	2" x 1-1/2"	10	2.82

**Cap**



Part #	Size	Box	Each
M-108F	1-1/2"	100	0.77
M-108K	2"	100	1.05
M-108M	3"	20	1.27

**Floor Flange**



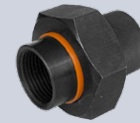
Part #	Size	Box	Each
M-131F	1/2"	20	2.82
M-131K	3/4"	20	3.38
M-131M	1"	20	3.95

**Union**



Part #	Size	Box	Each
M-104F	1/2"	25	3.43
M-104K	3/4"	20	4.10
M-104M	1"	20	5.36

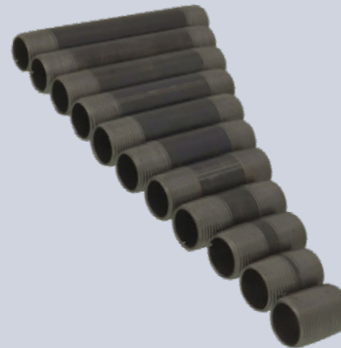
**Dielectric Union**



Part #	Size	Box	Each
301-333	1/2"	10	6.50
301-334	3/4"	10	9.00

**Nipple Pack**

- Black malleable
- Assorted lengths up to 6"
- Male thread
- 150 psi



Part #	Size	Box	Price
BLK66F	1/2"	66	59.19
BLK66K	3/4"	66	72.01
BLK66M	1"	60	95.32

**Pressure Gauge**

- Used for air, water, steam, and other pressure applications
- Male thread



Part #	Size	Box	Each
AL51-1	0-15 psi	1	3.82
AL51-2	0-30 psi	1	3.59
AL51-3	0-60 psi	1	3.47
AL51-5	0-300 psi	1	3.36

**Multi-Purpose Thread Sealant**



Part #	Size	Box	Each
15804	4 oz	24	8.36
15806	8 oz	24	12.24
15808	16 oz	24	20.22

**White Stuff® Thread Sealant**



Part #	Size	Box	Each
ATNT-4	4 oz	24	7.02
ATNT-8	8 oz	24	11.75
ATNT-16	16 oz	12	17.98

**PTFE Thread Sealant Tape**



Part #	Size	Box	Each
70885MR	1/2" x 1429"	45	4.15
70886MR	3/4" x 1429"	27	5.64

**Low-Temp Leak Detector**

- Pinpoints large & small leaks better than soap solution
- Dries clean
- Non-corrosive
- Works normally in -10°F to 150°F



Part #	Size	Box	Each
ALD2	1 Gallon	6	18.04

**CSST Gas Piping**

- Black polyethylene coating
- TitleFlex interior



Part #	Size	Coil	Each
FSCSST12-125	1/2" x 125'	1	499.76
FSCSST34-125	3/4" x 125'	1	650.84
FSCSST114-75	1-1/4" x 75'	1	753.36
FSCSST112-75	1-1/2" x 75'	1	1163.39

**Yellow Polyethylene Gas Piping**

- Medium density
- Min. wall: 0.09



Part #	Size	Coil	Each
12150GAS	1/2" CTS (5/8" OD) x 150'	1	46.03
12500GAS	1/2" CTS (5/8" OD) x 500'	1	155.44
34GAS150	3/4" IPS (SDR-11) x 150'	1	87.80
34GAS500	3/4" IPS (SDR-11) x 500'	1	292.69
1GAS150	1" IPS (SDR-11) x 150'	1	127.90
1GAS500	1" IPS (SDR-11) x 500'	1	426.32
114GAS150	1-1/4" IPS (SDR-11) x 150'	1	212.97
112GAS150	1-1/2" IPS (SDR-11) x 150'	1	256.75
2GAS100	2" IPS (SDR-11) x 100'	1	257.91

**Gastite® FlashShield Cutter**

- Designed to cut stainless steel
- Creates clean cuts for optimal flaring of tubing
- Flat rollers



Part #	Size	Box	Each
FSCUTTER-SM	3/8" - 1"	1	76.97

**Forged Flare Nut**



Part #	Size	Box	Each
ANS4E	3/8"	50	0.77
ANS4F	1/2"	25	1.04
ANS4I	5/8"	20	1.55

**Swivel Nut**



Part #	Size	Box	Each
AUS4E	3/8"	25	1.77
AUS4F	1/2"	20	2.48
AUS4I	5/8"	15	3.24

**Forged Reducing Flare Nut**



Part #	Size	Box	Each
ANRS4FE	1/2" x 3/8" OD	25	1.25
ANRS4IF	5/8" x 1/2" OD	15	2.35

**Hose Barb x Flare Fitting**



Part #	Size	Box	Each
AHC4335	1/4" x 3/8" Nut	1	3.51
AHC4336-F	3/8" x 3/8" Nut	1	1.92

**Hose Barb x MIP Fittings**



Part #	Size	Box	Each
ABG30CC	1/4" x 1/4" HB	10	0.93
ABG30EC	3/8" x 1/4" HB	10	1.37

**Plug**



Part #	Size	Box	Each
AP2E	3/8" Tube OD	50	0.76
AP2F	1/2"	25	1.15
AP2I	5/8"	25	1.56

**Flare x MIP Adapter**



Part #	Size	Box	Each
A48EE	3/8" OD x 3/8" MIP	25	1.17
A48EF	3/8" OD x 1/2" MIP	25	1.81
A48FF	1/2" OD x 1/2" MIP	20	1.85
A48IF	5/8" OD x 1/2" MIP	15	1.90

**Flare x FIP Adapter**



Part #	Size	Box	Each
A46EE	3/8" OD x 3/8" MIP	25	1.06
A46EF	3/8" OD x 1/2" MIP	25	1.78
A46FF	1/2" OD x 1/2" MIP	20	1.89
A46FK	1/2" OD x 3/4" MIP	15	2.69
A46IF	5/8" OD x 1/2" MIP	15	2.15
A46IK	5/8" OD x 3/4" MIP	15	2.88

**Union**



Part #	Size	Box	Each
A42E	3/8" Tube OD	25	0.92
A42F	1/2"	25	1.67
A42I	5/8"	15	2.42

**Connector**



Part #	Size	Box	Each
L48EF	3/8" OD x 3/8" MIP	25	2.20
L48FF	3/8" OD x 1/2" MIP	20	2.15

**Forged Elbow**



Part #	Size	Box	Each
A54EE	3/8" OD x 3/8" MIP	25	1.65
A54EF	3/8" OD x 1/2" MIP	20	1.97
A54FE	1/2" OD x 3/8" MIP	25	2.40
A54FF	1/2" OD x 1/2" MIP	25	2.14
A54FK	1/2" OD x 3/4" MIP	20	2.82

**Forged Elbow**



Part #	Size	Box	Each
A49EE	3/8" OD x 3/8" MIP	20	1.33
A49EF	3/8" OD x 1/2" MIP	25	1.65
A49FF	1/2" OD x 1/2" MIP	25	2.03
A49FK	1/2" OD x 3/4" MIP	15	3.71
A49IF	5/8" OD x 1/2" MIP	10	2.58

★ ★ ★ ★ ★ ★ **IMPORT FLARE FITTINGS\*** ★ ★ ★ ★ ★ ★

**OD Flare x Long MIP Adapter**



Part #	Size	Box	Each
LI48EF	3/8" x 1/2"	25	1.20
LI48FF	1/2" x 1/2"	20	0.96

**Flare Tee**



Part #	Size	Box	Each
AI44E	3/8"	25	1.11
AI44F	1/2"	20	1.71
AI44I	5/8"	15	2.06

**Flare Elbow**



Part #	Size	Box	Each
AI55E	3/8"	25	0.75
AI55F	1/2"	25	0.93

**Flare Nut**



Part #	Size	Box	Each
AI41C	1/4"	20	0.20
AI41E	3/8"	20	0.33
AI41I	5/8"	20	0.66

\*Inventory available while supplies last.

## Gas Connectors

- Approved for installation of indoor and outdoor home appliances, heating systems, and cooking accessories
- 304 Stainless Steel
- 100% factory leak tested
- Not for use with portable gas generators



## Corrugated Stainless Steel Gas Connectors – 3/8" ID

Part #	Size	Box	Each
SSC12-12	1/2" MIP x 1/2" MIP x 12"	25	12.17
SSC12-18	1/2" MIP x 1/2" MIP x 18"	25	14.69
SSC12-24	1/2" MIP x 1/2" MIP x 24"	25	16.81
SSC12-36	1/2" MIP x 1/2" MIP x 36"	25	19.77
SSC12-48	1/2" MIP x 1/2" MIP x 48"	25	24.05
SSC12-60	1/2" MIP x 1/2" MIP x 60"	12	29.08



### Gas Ball Valve w/ Tap

- 1/8" side tap
- 600 PSI/WOG
- (2) FKM O-rings
- Made in Italy



Part #	Size	Box	Each
AJ203-1/2	1/2" FIP	10	16.39
AJ203-3/4	3/4" FIP	8	19.07

### Gas Flare Ball Valve w/ Tap

- 1/8" side tap
- 600 PSI/WOG
- (2) FKM O-rings
- Made in Italy



Part #	Size	Box	Each
AJ205-1/2	3/8" Flare	12	19.12
AJ205-3/8	1/2" Flare	12	19.31

### Gas Flare Ball Valve

- 1/8" side tap
- 600 PSI/WOG
- (2) FKM O-rings
- Made in Italy



Part #	Size	Box	Each
AJ220EE	3/8" Flare	12	11.47
AJ220FF	1/2" Flare	12	11.62
AJ220II	5/8" Flare	8	18.59

### Gas Ball Valve

- Brass body
- CSA approved



Part #	Size	Box	Each
A8361-1/2	1/2"	12	3.96
A8361-3/4	3/4"	12	5.99
A8361-1	1"	6	9.38

### Recessed Gas Outlet Box

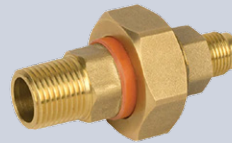
- For flush mount installation
- Max: 25 psi
- Operating Temperature Range: -40°F to 160°F
- 6-1/2" W x 3" D x 6-1/2" H



Part #	Size	Box	Each
FSBOX	3/4" Pipe Thread	1	52.80

### Compact Dielectric Union

- For use in propane applications
- Prevents accelerated corrosion
- HNBR Seal: 40°F to 180°F



Part #	Size	Box	Each
4800EF	3/8" OD x 1/2" MIP Compact	10	15.99
4800FF	1/2" OD x 1/2" MIP Compact	10	18.98

### Drip Leg Kit

- Includes: (1) tee, (1) cap, (2) nipples



Part #	Size	Bag	Price
75ST-06	3/8"	1	1.90
75ST-08	1/2"	1	3.21
75ST-12	3/4"	1	4.25

### First Stage Domestic Regulator

- Full Size Capacity (BTU/H LPG): 2,300,000
- Inlet: F. POL
- Outlet: 1/2" FNPT
- Outlet Adj. Range (PSI): 9-12
- Outlet Set Point (PSI): 10



Part #	Size	Box	Each
1622H-HGJ	F.POL x 1/2" FNPT	1	64.07

### Second Stage Domestic Regulator

- Full Size Capacity (BTU/H LPG): 710,000
- Inlet: 1/2" FNPT
- Outlet: 1/2" FNPT
- Outlet Adj. Range ("WC): 9-13
- Outlet Set Point ("WC): 11



Part #	Size	Box	Each
1622-BCF	1/2" FNPT x 1/2" FNPT	1	54.33
1622-CFF	1/2" FNPT x 3/4" FNPT	1	56.20

### Second Stage Domestic Regulator - Back Mount

- Back Mount Capacity (BTU/H LPG): 1,000,000
- Inlet: 1/2" FNPT
- Outlet: 3/4" FNPT
- Outlet Adj. Range ("WC): 9-13
- Outlet Set Point ("WC): 11



Part #	Size	Box	Each
1652-CFF	1/2" FNPT x 3/4" FNPT	1	55.40

### LP Gas Anodeless Riser



Part #	Size	Box	Price
1353-91-04	3/4" MPT x 1/2" CTS x 30"	1	63.64
1353-91-13	3/4" MPT x 3/4" IPS x 17"	1	63.92

### LP Gas Systems Flex Riser

- Swivel union



Part #	Size	Box	Price
12-1004-36	1/2" MPT x 1/2" CTS x 36"	1	49.76
13-1013-36	3/4" MPT x 3/4" IPS x 36"	1	77.25
14-1014-36	1" MPT x 1" IPS x 36"	1	155.28

### LP Gas Systems Flex Riser

- 1/2" FE Flare Swivel Union for 1/2" CTS only



Part #	Size	Box	Price
99-0511-36	1/2" OD x 1/2" CTS x 36"	1	40.96
99-0511-72	1/2" OD x 1/2" CTS x 72"	1	44.67



**Faucet Connector**

- Braided stainless steel
- Temp. rating: 40° to 140° F
- 125 psi maximum



Part #	Size	Box	Each
S1-12AF	3/8" Comp x 1/2" FIP x 12"	25	3.19
S1-16AF	3/8" Comp x 1/2" FIP x 16"	25	3.52
S1-20AF	3/8" Comp x 1/2" FIP x 20"	25	3.81
S1-30AF	3/8" Comp x 1/2" FIP x 30"	25	4.53

**Toilet Connector**

- Braided stainless steel
- Temp. rating: 40° to 140° F
- 125 psi maximum



Part #	Size	Box	Each
S1-9DLF	3/8" Comp x 7/8" BC x 12"	25	2.89
S1-12DLF	3/8" Comp x 7/8" BC x 12"	25	3.05
S1-16DLF	3/8" Comp x 7/8" BC x 12"	25	3.52
S1-20DLF	3/8" Comp x 7/8" BC x 12"	25	3.81

**Ice Maker Connector**

- Braided polymer
- Temp. rating 40° to 140° F
- 125 psi maximum



Part #	Size	Box	Each
SO-60IMF	1/4" Comp x 1/4" Comp x 60"	10	10.63
SO-96IMF	1/4" Comp x 1/4" Comp x 96"	10	16.84

**Dishwasher Connector**

- Braided stainless steel
- 125 psi maximum
- For indoor use



Part #	Size	Box	Each
S1-60DW6F	3/8" Comp x 3/8" Comp x 60"	20	6.50

**Quick-Connect Stop Valve - 1/4-Turn**

- Push-fit connection
- Compatible with PEX, copper, and CPVC
- Chrome-plated brass
- Temp. rating: 40° to 160° F
- 125 psi maximum



Part #	Size	Sleeve	Each
QC14	5/8" OD x 3/8" OD - Straight	5	14.80
QC19	5/8" OD x 3/8" OD - Angle	5	14.80

**Angle Stop Valves**

- Available in PEX, compression, or sweat
- Chrome-plated brass



Part #	Size	Box	Each
BVCR05	1/4" OD x 1/2" PEX	20	5.08
BVCR08	1/4" OD x 1/2" NOM	20	4.07
BVCR09	1/4" OD x 5/8" Comp	20	6.71
BVA20	3/8" Comp x 1/2" PEX	20	4.21
BVCR19	3/8" Comp x 5/8" Comp	20	4.79

**Straight Stop Valves**

- Available in PEX or compression
- Chrome-plated brass



Part #	Size	Box	Each
BVS20	3/8" Comp x 1/2" PEX	20	4.21
BVCR14	3/8" Comp x 5/8" Comp	20	4.67

**Sure Vent II Air Admittance Valve**

- For use as a secondary vent
- Complies to ASSE standard 1050 and 1051
- 1-size approved to handle up to 2 in. vent pipe



Part #	Size	Box	Each
39017	1/2" - 2"	50	14.78

**Dishwasher Air Gap**



Part #	Size	Box	Each
AC-002	1/2" x 3/4"	100	3.25

**Dishwasher Branch Tailpiece**



Part #	Size	Box	Each
APL902	3/4" Direct	25	2.98
APL903	1/2" Direct	25	2.57
APL917	1/2" Slip-joint	25	3.41
APL918	3/4" Slip-joint	25	2.39

**Stainless Steel Basket Strainer**



Part #	Size	Box	Each
A-400	Duo-Cup / Deep	1	6.15
A-300	Import	1	4.27
A-304	Twist Type	1	7.52
BASK300	Repl. Bskt. A-300/400	1	1.11
BASK304	Repl. Bskt. A-304	1	2.36

**Washing Machine Hose**

- Braided stainless steel
- Heavy duty brass nuts
- No crink or crease
- No-burst connection
- 5-yr warranty



Part #	Size	Box	Price
B9WM60	3/4" x 60"	10	12.94

**Quadro Washing Machine Outlet Box**

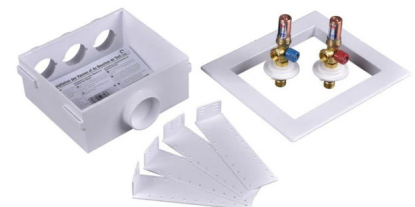
- 1/4-turn valves
- 2" drain fits PVC or ABS Sch. 40 DWV pipe
- Snap-on faceplate
- Includes (4) support brackets



Part #	Size	Box	Price
38530	1/2" Copper	12	35.81

**Quadro Washing Machine Outlet Box w/Hammer Arrestors**

- 1/4-turn valves
- 2" drain fits PVC or ABS Sch. 40 DWV pipe
- Snap-on faceplate
- Includes (2) Quiet Pipe hammer arrestors
- Includes (4) support brackets



Part #	Size	Box	Price
38540	3/4" x 1/2" SWT/MIP	12	63.00

## Acetal Gray (PI) Fittings

Food-grade push-fit tube fittings ideal for systems involving food, potable liquids, inert gasses, CO2 and nitrogen beverage lines.

### Acetal Gray Union Tee



Part #	Size	Bag	Each
JG4TU4	1/4" OD x 1/4" OD x 1/4" OD	10	2.33
JG6TU4	3/8" OD x 3/8" OD x 1/4" OD	10	3.71
JG6TU6	3/8" OD x 3/8" OD x 3/8" OD	10	2.88

### Acetal Gray Union Connector



Part #	Size	Box	Each
JG4UC4	1/4" OD x 1/4" OD	10	1.60
JG6UC4	3/8" OD x 1/4" OD	10	2.19
JG6UC6	3/8" OD x 3/8" OD	10	2.15

### Acetal Gray Female Connector



Part #	Size	Bag	Each
JG4FA7	1/4" OD	10	2.05
JG6FA7	3/8" OD	10	2.29

### Acetal Gray Male Connector



Part #	Size	Bag	Each
JG4MC4	1/4" OD x 1/4" MIP	10	1.27
JG6MC4	3/8" OD x 1/4" MIP	10	1.76
JG6MC6	3/8" OD x 3/8" MIP	10	2.03
JG8MC8	1/2" OD x 1/2" MIP	10	2.95

### Acetal Gray Elbow Union



Part #	Size	Bag	Each
JG4EU4	1/4" OD	10	2.03
JG6EU6	3/8" OD	10	2.73

## Straight Shut-Off Valve - 1/4-Turn

- For use with plastic or copper OD sized tubing
- Max. 150 psi at 70° F
- Max. 60 psi at 140° F



Part #	Size	Bag	Each
J4BV	1/4"	25	4.45
J6BV	3/8" Push-fit	25	4.75

## Angle Stop Adapter Valve - 1/4-Turn

- For use with plastic or copper OD sized tubing
- Threads onto 3/8 in. compression chrome supply stop
- Max. 150 psi at 70° F
- Max. 60 psi at 140° F



Part #	Size	Bag	Each
JGASV4	1/4"	30	9.54
JGASV6	3/8"	30	10.13

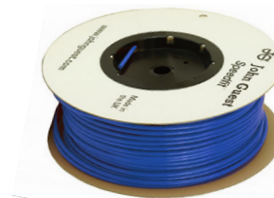
## In-Line Check Valve



Part #	Size	Bag	Each
JG4CV	1/4"	10	10.87
JG6CV	3/8"	10	9.48

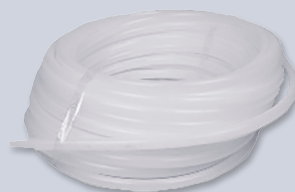
## Polyethylene Tubing - Blue

- Sold in 500' reel only



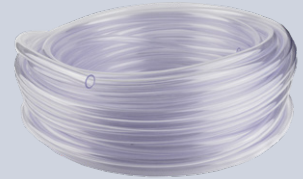
Part #	Size	Coil	Each
JG4B500	1/4" OD x .040 Wall x 500'	1	55.19
JG6B500	3/8" OD x .040 Wall x 500'	1	124.05

## Polyethylene Tubing - Frosted



Part #	Size	Coil	Each
APE-12	1/2" OD x 100'	1	18.30
APE-58	5/8" OD x 100'	1	23.52
APE-34	3/4" OD x 100'	1	30.05

## Vinyl Tubing - Clear



Part #	Size	Coil	Each
ACVT-12	1/2" x 5/8" x 100'	1	22.74
ACVT-38	3/8" x 1/4" x 100'	1	20.79

## White Nylon Adapter



Part #	Size	Bag	Each
MA1212	1/2" MIP x 1/2" Barb	1	0.35

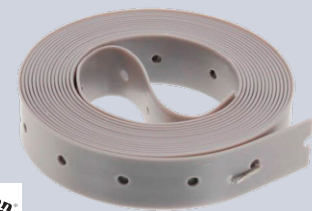
## Mr. Drain Water Softener Air Gap

- Provides full backflow and anti-siphon protection
- For use with washing machine discharge, dehumidifiers, water filtration devices, and water softeners



Part #	Size	Box	Each
MD-10A	1/4" OD x 1/4" OD x 1/4" OD	10	22.60

## Plastic Hanger Strap



Part #	Size	Box	Each
JHK-100	3/4" x 100'	10	11.89

## Sealant Grease

- Valve lubricant & sealant
- Temperature Range -40 to 400 Degrees F
- Heavy consistency
- Grease-like silicone paste



Part #	Size	Box	Each
G111	5.3 oz	24	16.25



### ProLock® Fittings

- Click-lock technology features audible click and visible display when connected securely
- For use with PE-RT, PEX, copper, and CPVC pipe
- Ideal for use in water softener and conditioning systems
- O-ring provides a permanent, leakproof seal
- 25-year warranty

#### ProLock Elbow



Part #	Size	Bag	Each
79534BL	3/4" CTS	5	6.31
79535BL	1" CTS	5	13.12

#### ProLock Coupling



Part #	Size	Bag	Each
79514BL	3/4" CTS	5	5.95
79515BL	1" CTS	5	11.23

#### ProLock Male Connector



Part #	Size	Bag	Each
79554BL	3/4" CTS x 3/4" NPT	5	5.75
79555BL	1" CTS x 1" NPT	5	9.90
79556BL	1" CTS x 3/4" NPT	5	7.15

#### ProLock Tee



Part #	Size	Bag	Each
79524BL	3/4" CTS	5	8.87
79525BL	1" CTS	5	16.68

#### ProLock Brass Female Elbow



Part #	Size	Bag	Each
79566BL	3/4" CTS x 1" NPS	2	14.47
79567BL	3/4" CTS x 1-1/4" NPS	2	16.27
79568BL	1" CTS x 1-1/4" NPS	1	18.07



### Speedfit Twist & Lock®

- Twist & Lock cap securely locks pipe in place and prevents release
- For use with Copper, PEX, and CPVC in any combination
- Provides a durable, leakproof seal
- 25-year warranty

#### Speedfit Elbow



Part #	Size	Bag	Each
79533	1/2" CTS	5	4.33
79534	3/4" CTS	5	6.94
79535	1" CTS	2	10.60

#### Speedfit Coupling



Part #	Size	Bag	Each
79513	1/2" CTS	5	3.70
79514	3/4" CTS	5	5.09
79515	1" CTS	5	9.36

#### Speedfit Tee



Part #	Size	Bag	Each
79523	1/2" CTS	5	4.31
79524	3/4" CTS	5	7.18
79525	1" CTS	2	11.39

#### Speedfit Male Connector



Part #	Size	Bag	Each
79553	1/2" CTS x 1/2" NPT	10	3.33
79554	3/4" CTS x 3/4" NPT	5	5.03
79555	1" CTS x 1" NPT	5	6.93

#### Speedfit End Cap



Part #	Size	Bag	Each
79583	1/2" CTS	10	3.18
79584	3/4" CTS	10	3.80
79585	1" CTS	5	5.14

### Speedfit Brass Female Adapter

- Approved for behind-the-wall applications with no access panel
- Can be installed on wet lines
- Can be disconnected
- Rubber washer provides leakproof seal
- 25-year warranty
- 160 psi @ 73° F / 100 psi @ 180° F / 80 psi @ 200° F



Part #	Size	Bag	Each
79574	3/4" CTS x 3/4" NPTF	5	8.95

### Speedfit Shut-Off Valve

- Can be installed on wet lines
- Can be disconnected
- Color-coded caps for hot and cold
- 90 degree on or off position
- 25-year warranty

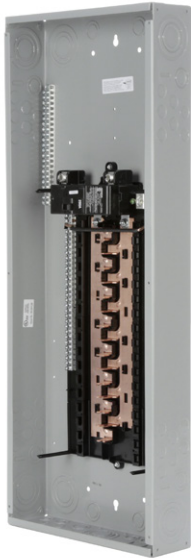


Part #	Size	Bag	Each
79623	1/2" CTS	5	16.17
79624	3/4" CTS	5	16.96



**Single Phase Main Breaker Load Center PL Series**

- 120/240 VAC
- 200 A
- (40) circuits
- MBK150A/MBK200A breaker
- 3-wire configuration
- (30) spaces
- Copper bus
- NEMA 1 Enclosure



**Ephesus Series™**  
**SPORTS LIGHTING**

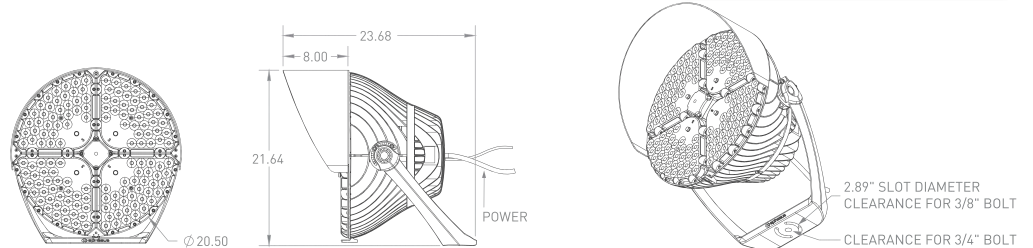
Ephesus GEN1 System is the ultimate light for versatility and the best player, fan and broadcast experience.

- Ability to maintain delivered Foot Candles over fixture life
- Saves energy with low stand-by current for minimal power consumption
- Integrated laser mount for precise aiming



**SPECIAL PRICING**  
**\$1950.00 /ea**

**Mounting Options & Dimensions** (Shown with optional visor)



Please contact Heather Jeffrey for more information on our full sports lighting offering:

**Heather@ACandB.com • Direct: 517.610.5709**

**SIEMENS**

Part #	Size	Box	Price
P3040B1200CU	36" H x 14-1/4" W x 3-7/8" D	1	222.26

**Single Phase Main Phase Lug Load Center PL Series**

- 120/240 VAC
- 200 A
- (40) circuits
- MBK200A breaker
- 3-wire configuration
- (40) spaces
- Copper bus
- NEMA 1 Enclosure



**SIEMENS**

Part #	Size	Box	Price
P4040B1200CU	36" H x 14-1/4" W x 3-7/8" D	1	275.15

**Fusible Heavy Duty Safety Switch Low Voltage - Single Throw**

- 600 VAC
- 30 A
- 7-1/2 HP
- 3 Phase
- 60 Hz
- 3-pole / 3-wire
- 200kA short circuit
- NEMA 1 Enclosure
- 2/3 point hole mounting



**SIEMENS**

Part #	Size	Box	Price
HF361	14.3" H x 7.7" W x 10.2" D	1	156.35

**Non-Fusible Heavy Duty Safety Switch Low Voltage - Single Throw**

- 600 VAC
- 30 A
- 30 HP
- 3 Phase
- 60 Hz
- 3-pole / 3-wire
- 200kA short circuit
- NEMA 1 Enclosure



**SIEMENS**

Part #	Size	Box	Price
HNF361R	11.1" H x 7.9" W x 10.2" D	1	185.17

**Double-Pole Toggle Light Switch**

- Commercial grade
- Quiet switch
- Back & side-wired
- Grounding
- White



Part #	Size	Box	Price
CSB220W	20 AMP - 120/277 V	10	12.02

**Duplex Outlet / Receptacle**

- Commercial grade
- Indented face
- Side-wired
- NEMA 5-20R
- Grounding
- White



Part #	Size	Box	Price
CR20W	20 AMP - 125 V	10	2.53

**FlexBOX® Single Gang Box**

- Wall/switch receptacle
- Use with non-metallic sheathed cable
- Non-conductive
- Splined thread holes
- Includes nails
- Non-corrosive PVC



Part #	Size	Box	Price
EZ23SN	24 cu. in.	10	1.13

# AMERICAN

Copper & Brass, LLC  
Since 1986

Q2 FLYER  
APRIL - JUNE  
2024

PLUMBING • HVAC • LP GAS • ELECTRICAL • WATER QUALITY



## MEMORIAL DAY

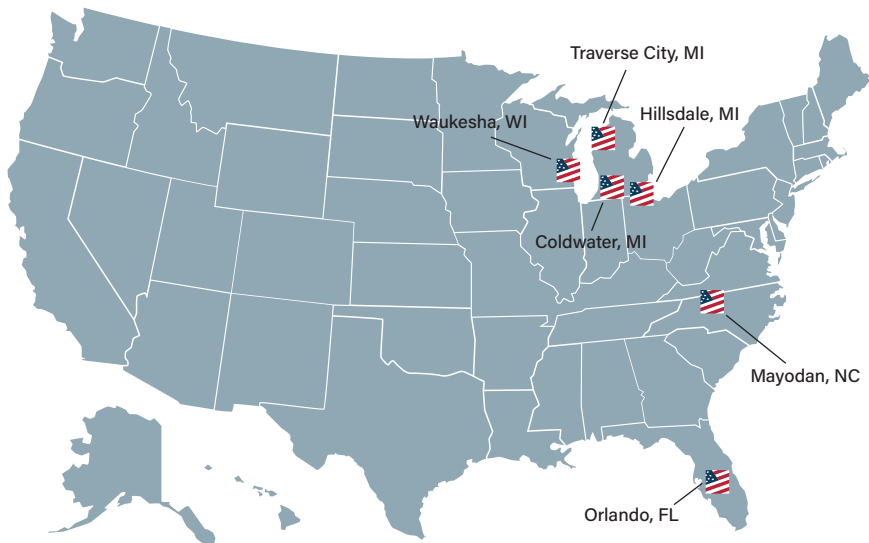
REMEMBER AND HONOR

REMEMBERING THE BRAVE HEARTS  
WHO OFFERED THE ULTIMATE  
SACRIFICE TO PRESERVE OUR FREEDOM  
— WE HONOR YOUR LEGACY THIS  
MEMORIAL DAY AND EVERY DAY.  
— AMERICAN COPPER & BRASS —

AMERICAN  
Copper & Brass, LLC  
Since 1986

100 S. Michigan Ave.  
Coldwater, MI 49036

**FREE SHIPPING ON ALL ONLINE ORDERS OVER \$100!\*** 



**WE SHIP ANYWHERE IN THE USA!**

**Scan the QR Code  
& Become a Valued  
Customer Today!**



\*Free shipping over \$100 available nationwide. Excludes hard pipe, oversized, and items 10ft+. For such items, the minimum to qualify for free shipping is \$2500 if the shipping address is within 200 miles of your nearest American Copper & Brass Distribution Facility, otherwise shipping charges apply. Larger HVAC trunk ductwork is charged at \$50 for 1-4 pieces, and \$150 for 5+ pieces.

### MEET THE TEAM EDITION

Our mission at American Copper & Brass is to be the industry leader in customer awareness and service for Plumbing, HVAC, and Mechanical Contractors, Small Wholesalers, LP Gas Distributors, Water Works Supply Wholesalers, Water Conditioner Dealers, Lumber Yards, and Hardware Stores.

Thanks to our extensive logistics network, we are able to serve the continental United States, with next-day delivery to many areas.

Take a look inside for savings on the everyday products you need, plus you'll get to "Meet the Team" in this edition!



 **STOCK UP ON THE  
SUPPLIES YOU NEED!**

P: (800) 624-8296 • F: (800) 439-7752  
Shop Online: [ACandB.com](http://ACandB.com) • [Sales@ACandB.com](mailto:Sales@ACandB.com)

