

# VorTech™ Propeller Pumps

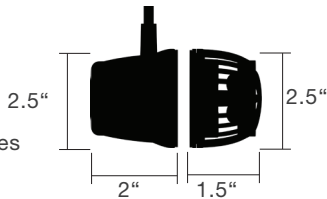


## MP10

### SPECIFICATIONS

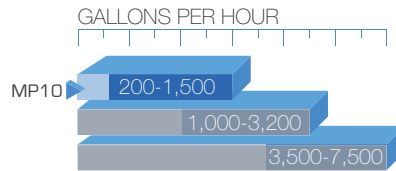
#### Dimensions

Dry-Side: 2.50 x 2 inches  
(63.5 x 50.8 mm)  
Wet-Side: 2.50 x 1.5 inches  
(63.5 x 38.1 mm)



#### Flow Range

200-1,500 gallons  
(750-6,000+ liters)  
per hour



#### Power Consumption MP10

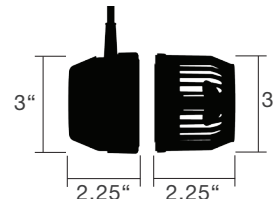


## MP40w

### SPECIFICATIONS

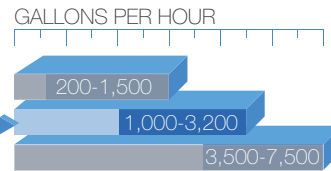
#### Dimensions

Dry-Side: 3 x 2.25 inches  
(76.0 x 57.0 mm)  
Wet-Side: 3 x 2.25 inches  
(76.0 x 57.0 mm)

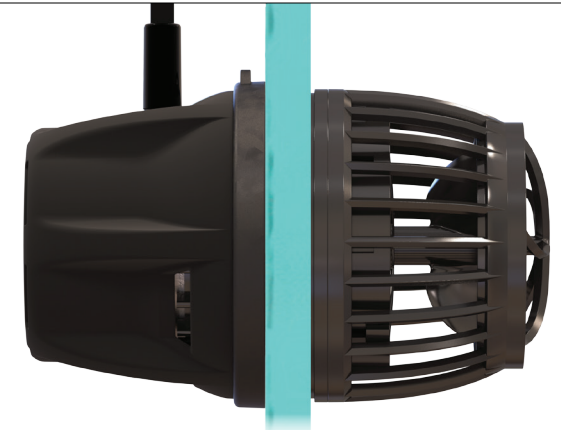


#### Flow Range

1,000-3,200 gallons  
(3,800-12,000+ liters)  
per hour



#### Power Consumption MP40

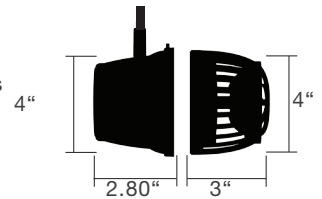


## MP60w

### SPECIFICATIONS

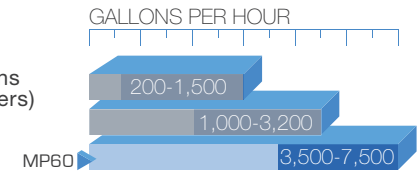
#### Dimensions

Dry-Side: 4 x 2.80 inches  
(102 x 71 mm)  
Wet-Side: 4 x 3 inches  
(102.0 x 76.0 mm)

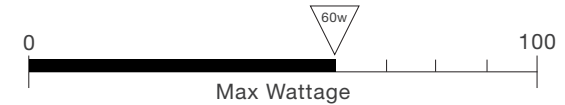


#### Flow Range

3,500-7,500 gallons  
(13,000-28,000 liters)  
per hour

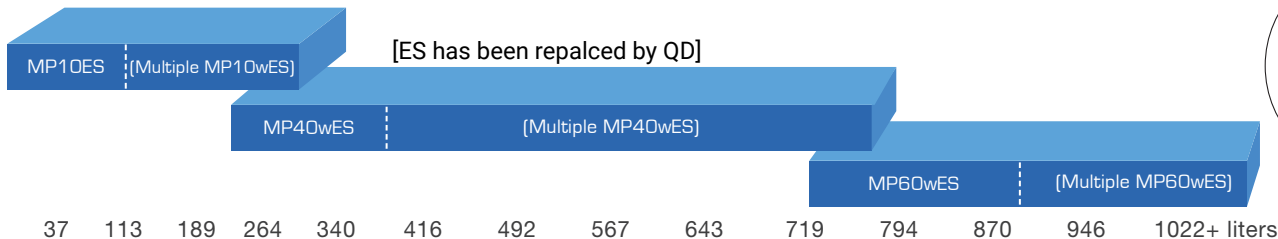


#### Power Consumption MP60

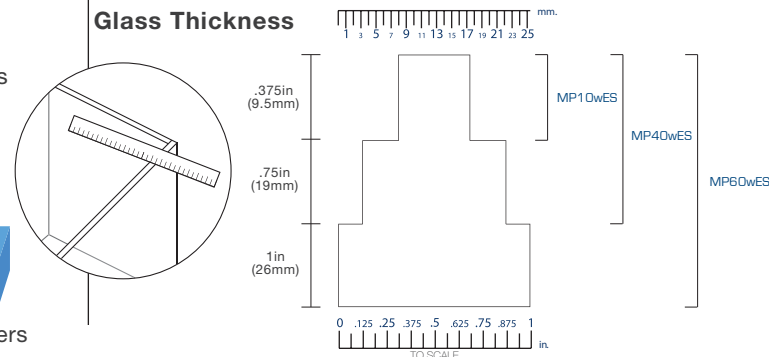


### Tank Size

10 20 30 40 50 60 70 80 90 100 110 120 130 140 150 160 170 180 190 200 210 220 230 240 250 260+ gallons



### Glass Thickness



Note: When possible the use of two smaller pumps in place of one larger pump may be advantageous due to the multiple pump capabilities provided by EcoSmart Live.