

**5** Years · anni  
Year · Jahre · años  
**Guarantee**  
Garantie · Garanzia · Garantia  
**3 + 2 year**  
with online registration



# Syncra SDC

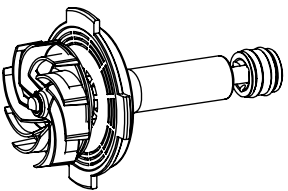
CENTRIFUGAL RETURN PUMP




# PSK SDC

SKIMMER PUMP

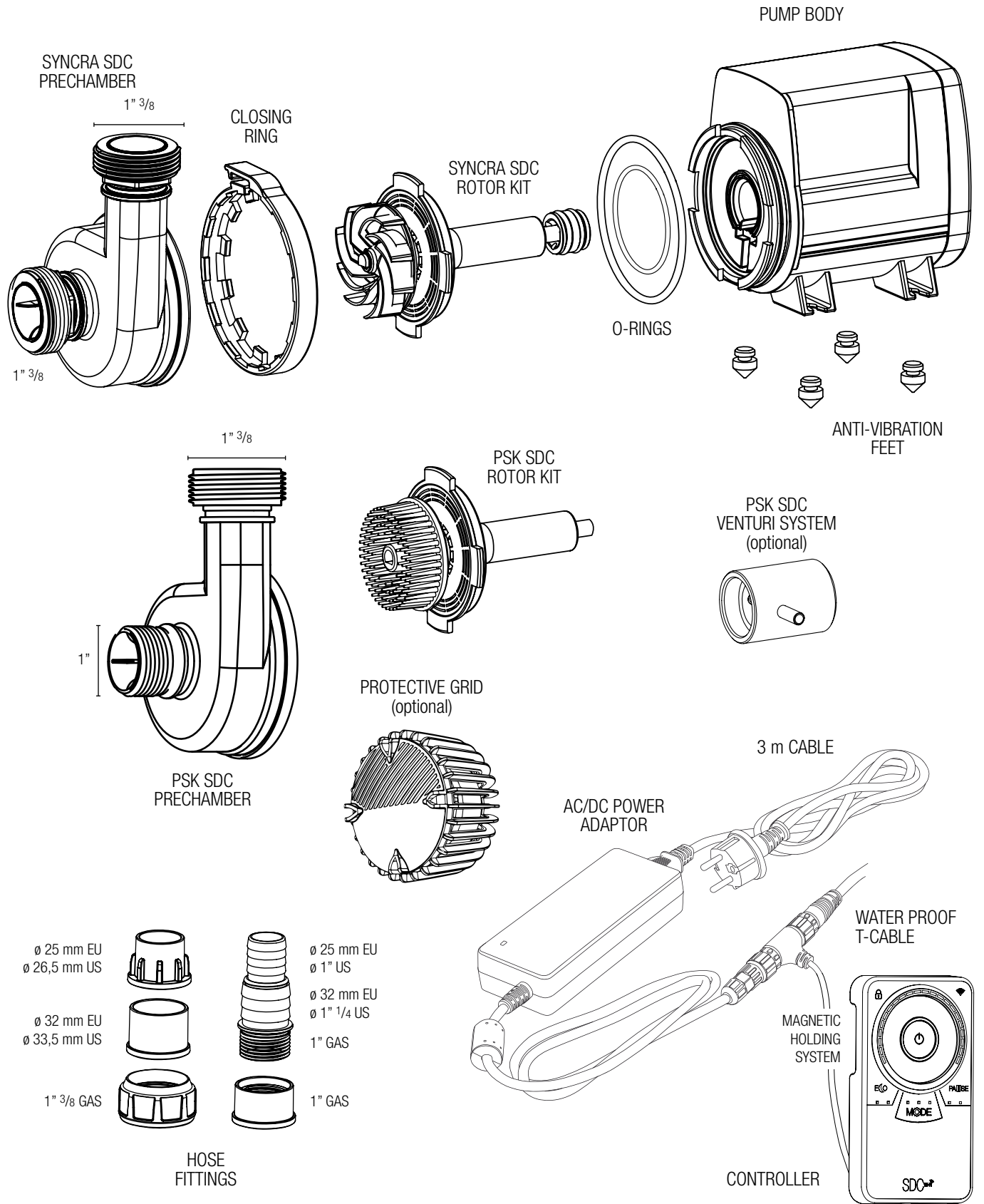


TECHNICAL DATA SHEET

<b>Syncra SDC</b>	<b>6.0</b>	<b>7.0</b>	<b>9.0</b>
<b>LIQUID HANDLED</b>	SALT WATER - FRESH WATER		
<b>MAX TEMPERATURE</b>	40° C		
<b>APPLICATION</b>	WET & DRY		
<b>CONSTRUCTION</b>			
<b>IMPELLER</b>	SINGLE CHANNEL		
<b>INTEGRATED PROTECTIVE DISK</b>			
<b>SHAFT</b>	POLISHED - HIGH QUALITY CERAMIC, CALIBRATED WITH PRECISION MACHINE		
<b>BEARING</b>	POLISHED - HIGH QUALITY CERAMIC, CALIBRATED WITH PRECISION MACHINE		
<b>PIPE CONNECTION</b>			
<b>IN LET</b>	1" 3/8		
<b>OUT LET</b>	1" 3/8		
<b>HOSE FITTINGS</b>	RIGID AND FLEXIBLE PIPES FOR WET & DRY DIY MOUNTING		
<b>CHAMBER</b>	360° ROTATION		
<b>MATERIALS</b>			
<b>CASING</b>	ABS		
<b>IMPELLER</b>	POM		
<b>CASING COVER</b>	ABS		
<b>CASING RING</b>	ABS		
<b>HOSE FITTINGS</b>	ABS		
<b>ANTI-VIBRATION FEET</b>	SYLICON		
<b>O-RINGS</b>	NBR		

Syncra SDC	6.0	7.0	9.0
<b>MOTOR</b>			
TYPE	SINGLE PHASE		
NO. OF POLES	2		
ROTATION SPEED (RPM)	MIN 1500 MAX 3600		
INSULATION CLASS	3		
PROTECTION DEGREE	IP X8		
VOLTAGE	24 V		
OVER LOAD PROTECTION	BUILT-IN THERMAL PROTECTOR		
<b>PUMP PERFORMANCES</b>			
Q MIN - MAX	2000 - 5500 l/h 530 - 1400 US gph	3000 - 7000 l/h 800 - 1900 US gph	4000 - 9000 l/h 1000 - 2500 US gph
H MIN - MAX	1 - 3,5 m 3.5 - 11.5 ft	2 - 5 m 6.5 - 16.5 ft	2,6 - 7 m 8.5 - 23 ft
MIN - MAX POWER CONSUMPTION	10 - 40 W	20 - 65 W	30 - 95 W
<b>CABLE</b>			
PUMP CABLE	3 m / 10 ft PVC		
AC/DC POWER ADAPTOR	100 - 240 V / 50 - 60 Hz / 24 VDC		
PLUG TYPE USA	1,2 m / 4 ft lenght		
PLUG TYPE EU	1,2 m / 4 ft lenght		
PLUG TYPE UK & AUS	1,2 m / 4 ft lenght		
<b>Wi-Fi</b>			
CONFIGURATION PASSWORD	sicceitaly		
FREE APPLICATION			
STORE	 		

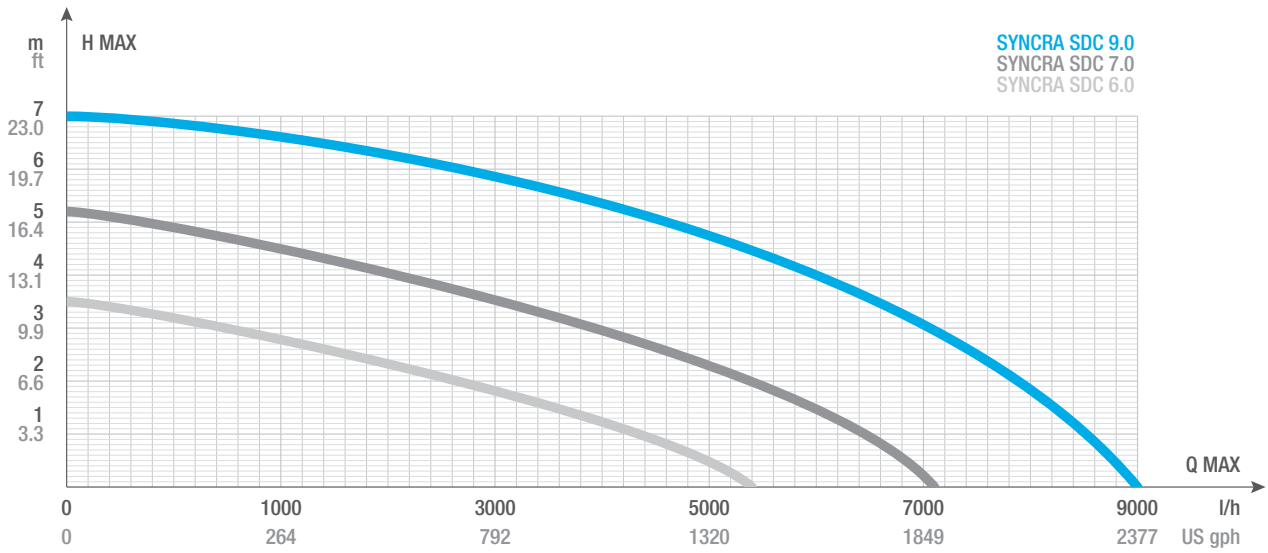
# CONSTRUCTION



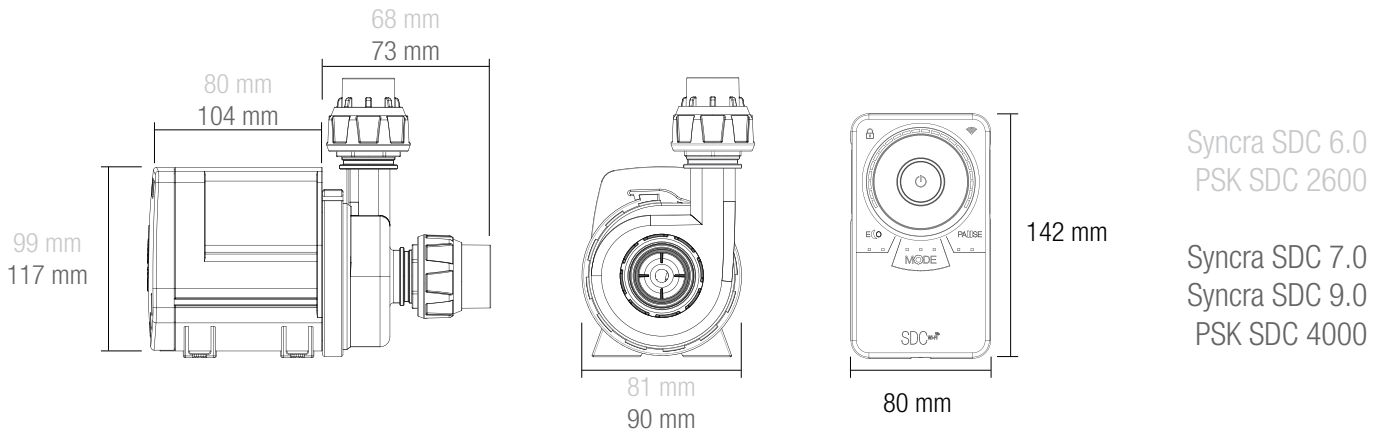
# SPARE PARTS

CODE	DESCRIPTION
SGR0222	Impeller, rotor kit, O-ring [SDC 6.0]
SGR0218	Impeller, rotor kit, O-ring [SDC 7.0]
SGR0217	Impeller, rotor kit, O-ring [SDC 9.0]
SGR0224	Needle wheel impeller, rotor kit, O-ring [PSK SDC 2600]
SGR0220	Needle wheel impeller, rotor kit, O-ring [PSK SDC 4000]
SVE0054	Bottom bearing + hook [SDC 6.0 - PSK SDC 2600]
SVE0052	Bottom bearing + hook [SDC 7.0 · 9.0 - PSK SDC 4000]
SVE0055	Pre-chamber and rotor O-rings [SDC 6.0 - PSK SDC 2600]
SVE0053	Pre-chamber and rotor O-rings [SDC 7.0 · 9.0 - PSK SDC 4000]
SVE0033	Anti-vibrations silicon feet (4 pcs.) [all models]
SPL0097	Pre-chamber + closing ring [SDC 6.0]
SPL0095	Pre-chamber + closing ring [SDC 7.0 · 9.0]
SPL0098	Transparent pre-chamber + closing ring [PSK SDC 2600]
SPL0096	Transparent pre-chamber + closing ring [PSK SDC 4000]
STR0029	Hose fittings for rigid and flexible pipes [all models]
SKT0207	Controller for SDC and PSK SDC [all models]
SKT0216	AC/DC power adaptor EU plug 90 W [SDC 6.0 - PSK SDC 2600]
SKT0217	AC/DC power adaptor US plug 90 W [SDC 6.0 - PSK SDC 2600]
SKT0218	AC/DC power adaptor UK plug 90 W [SDC 6.0 - PSK SDC 2600]
SKT0219	AC/DC power adaptor AU plug 90 W [SDC 6.0 - PSK SDC 2600]
SKT0208	AC/DC power adaptor EU plug 120 W [SDC 7.0 · 9.0 - PSK SDC 4000]
SKT0209	AC/DC power adaptor US plug 120 W [SDC 7.0 · 9.0 - PSK SDC 4000]
SKT0210	AC/DC power adaptor UK plug 120 W [SDC 7.0 · 9.0 - PSK SDC 4000]
SKT0211	AC/DC power adaptor AU plug 120 W [SDC 7.0 · 9.0 - PSK SDC 4000]
SPL0094	OPTIONAL Protective grid [SDC 6.0 · 7.0 · 9.0]
SPL0099	OPTIONAL Venturi [PSK SDC 2600 · 4000]

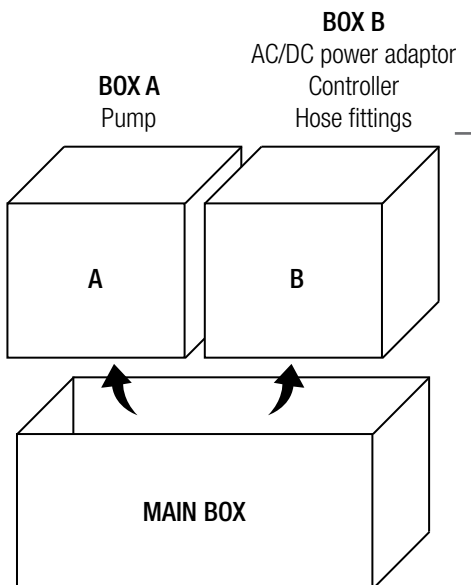
## TECHNICAL PERFORMANCES



## DIMENSIONS



## LOGISTIC



### BOX KIT for all models

**DIMENSIONS**  
38,4 x 19,0 x h 14,8 cm

**TOTAL GROSS WEIGHT**  
Approx. 5 - 5,5 kg

**1 PALLET = 30 OUTERS = 120 UNITS**

