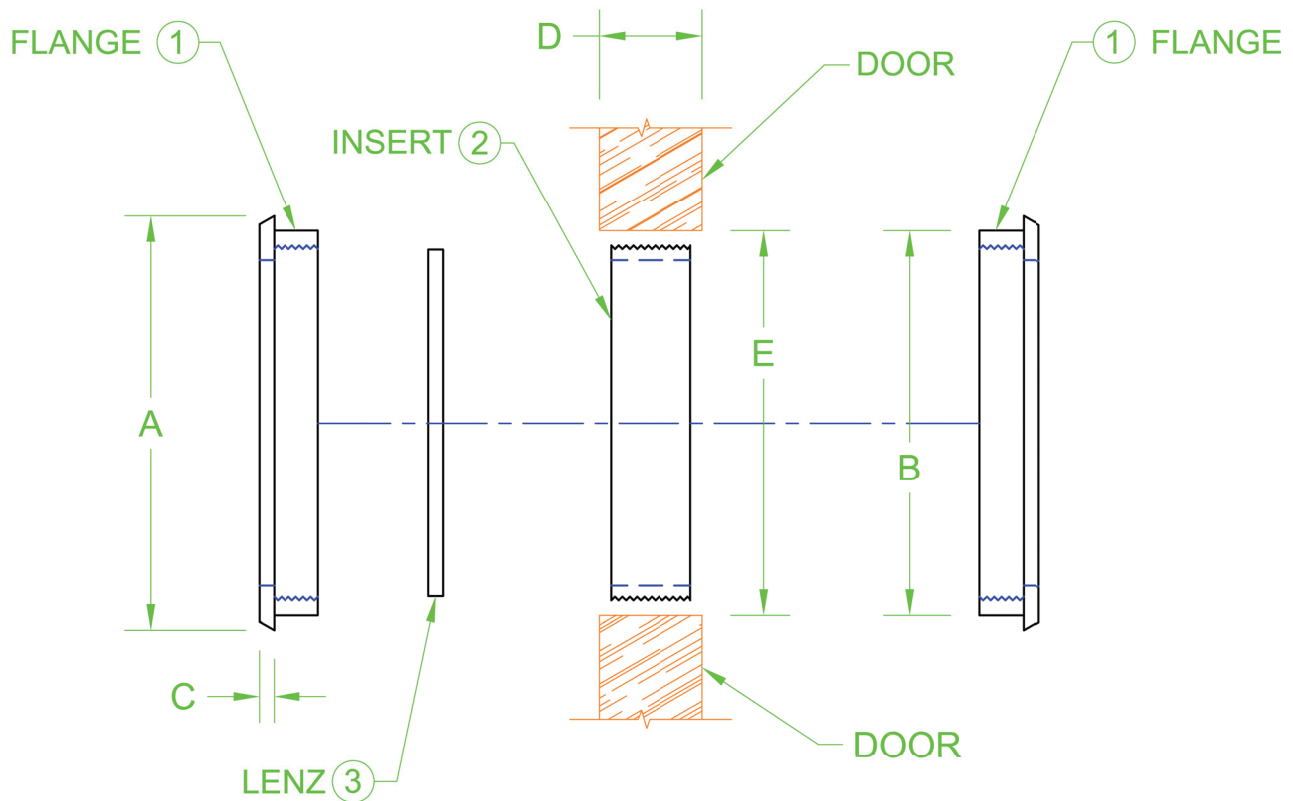




## specifications for doorlenz

Flange (1) and threaded insert (2) – anodized aluminum  
 Lenz (3) – tinted acrylic



Assembly: consists of 2 flange and 1 insert

SIZE	A	B	C	D	E
DA-3	3.00	2.50	.250	1.75	2.50/2.75
DA-5	5.00	4.50	.250	1.75	4.50/4.75
DA-7	7.00	6.50	.250	1.75	6.50/6.75

Lenz: specify size *and* color

SIZE	BLUE	RED	GREEN	AMBER	PURPLE
DL-3	-B	-R	-G	-A	-P
DL-5	-B	-R	-G	-A	-P
dl-7	-B	-R	-G	-A	-P