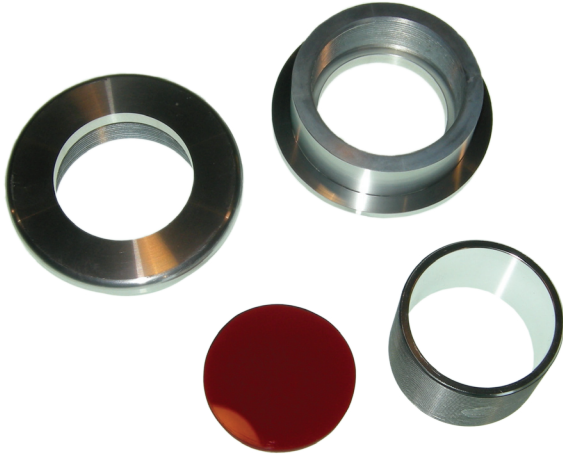


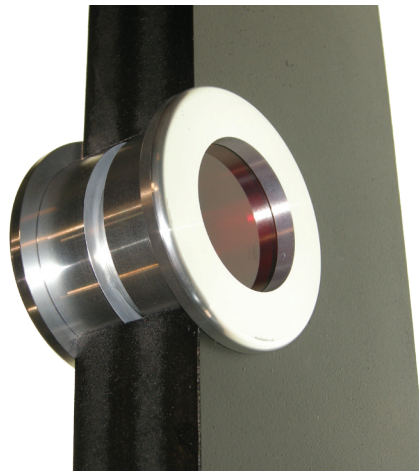
## how to install part two – fitting the doorlens



- 2 The Doorlens consists of 2 flanges, a threaded insert and a tinted lens.



- 3 Place lens into one of the flanges. Then thread insert to lock the lens in place.



- 4 Place assembly with lens on the outside surface of door. Thread second flange from inside of door to complete installation

**VERY IMPORTANT:** Make sure the parts are aligned so as not to damage the threads when assembling.

**NOTE:** View entire installation video at <http://www.youtube.com/watch?v=ScY7sWSQoDo>.