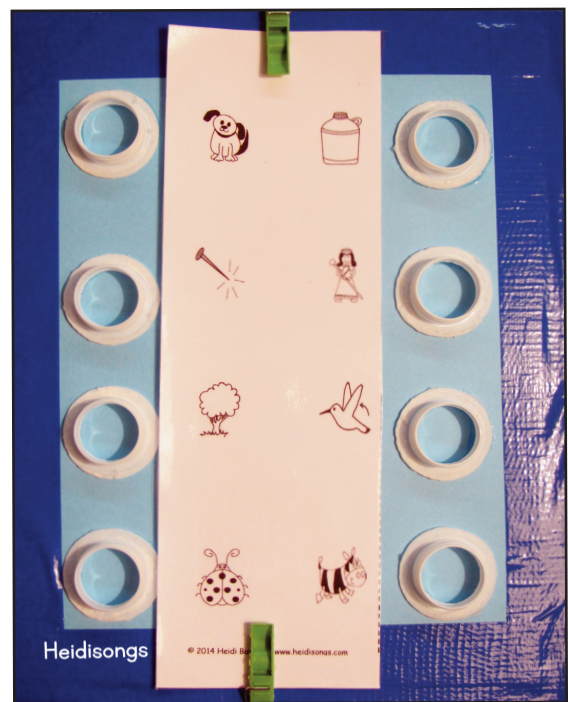
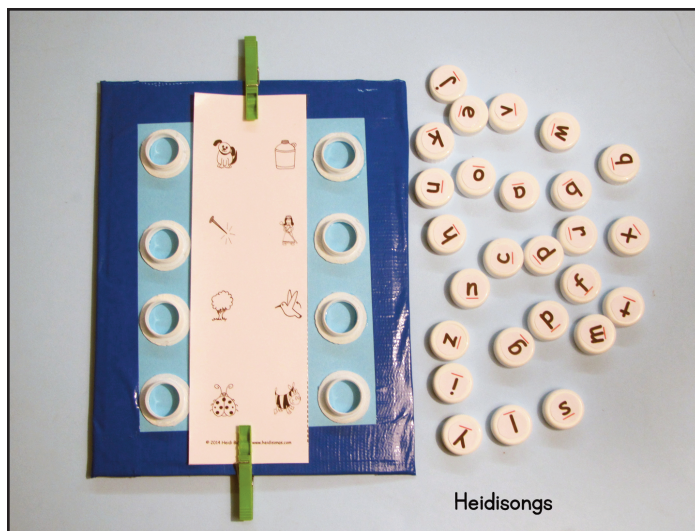


Letters and Lids

To build this learning center, start by saving up milk or juice carton lids. I would suggest that if you want to make one of these, you ask your students' families to start saving them. After we would go through a carton of milk at home I was careful to wash it out and cut off the lid and its screw on attachment before throwing the carton away. Once you have enough lids and attachments collected, use a piece of cardboard for your base and cover it with card stock. Fold and attach one of the included picture papers to the cardboard using clothespins. Do this first so you can accurately line up your lid attachments with the pictures. Next, line up your lid attachments as well as you can and glue them down.

You'll need to also glue some letters onto your lids. My template is just printed with computer paper, but I'm sure that stickers would work well for this also. I glued the letters on using Modge Podge and set them aside to dry.

Once your lids are dry, go ahead and try it out! All you have to do is fold the papers in half, which makes the whole thing self checking. When the kids are ready to check their answers, they just flip the paper over and look at the letters on the back! They check for accuracy, and move on to a new page. Use a variety of picture pages to cover the whole alphabet!





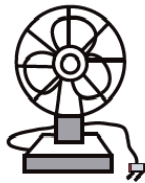
b

s



g

o



c

f



h

a



d

j



n

q



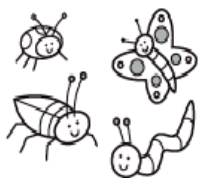
t

w



l

z



e

i



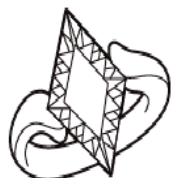
k

m



p

x



v

r



u

k



e

y



c

h



s

j

