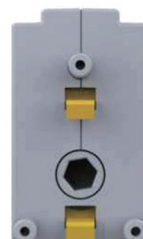
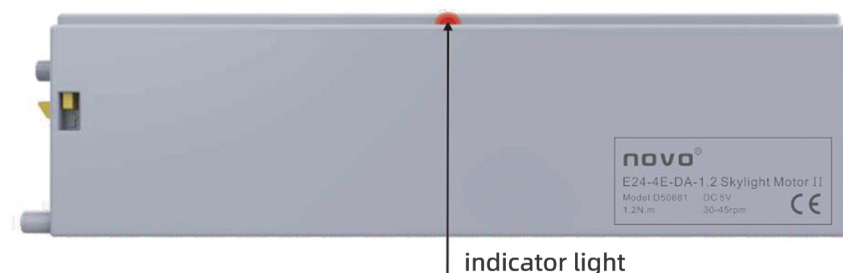
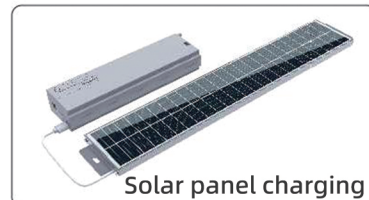


ZSTARR Motorized skylight shade II Instruction Manual

Products Features:

1. Input voltage: DCSV 2A
2. Can be charged with cell phone charger
3. Can be charged with solar panels (as shown on the right)
4. Indicator light is always on when charging, indicator light is off when fully charged
5. When the battery is low, it will emit "beep beep beep" alarm tone

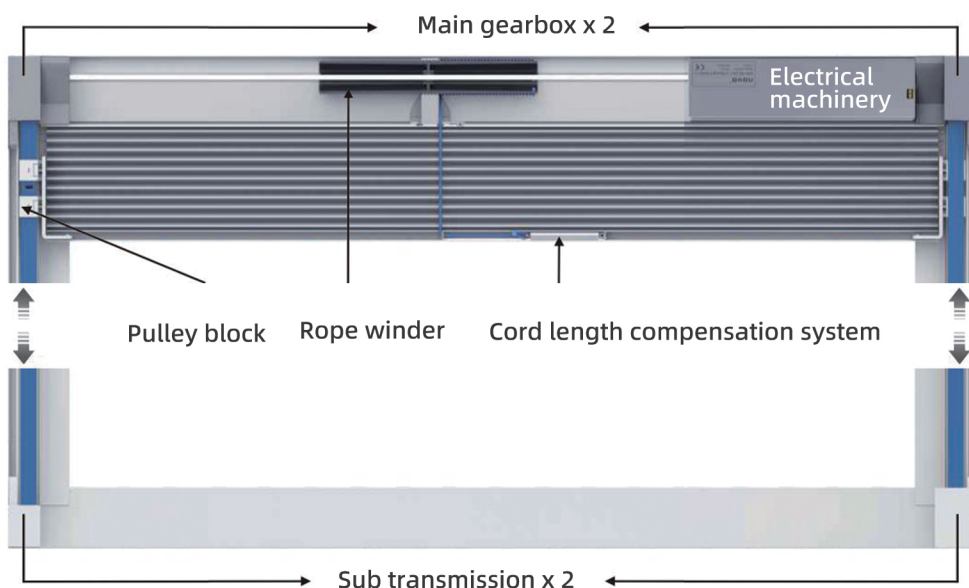


Type-c interface



Setup key

Product Organization Chart



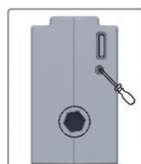
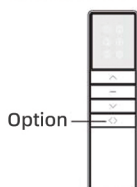
Please scan the code to view
the ZSTARR motorized skylight
shade installation video



Operating instructions

(A13 push button transmitter is used as an example; for others, please refer to the corresponding manual).

Pairing: Repeating the pairing procedure eliminates the current code. A motor can store up to 5 transmit channels, adding a new transmit channel will only overwrite the previous one in a loop.



Pairing Key

(P1)

Forward and reverse
rotation tips



Forward and reverse
rotation tips



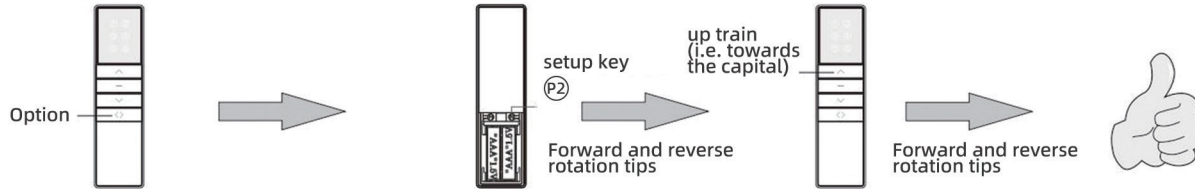
1. Select the channel you want to Pairing
2. Press the [Setting key] on the motor.
3. Control the [P1] key within 10 s after the motor is stopped.

Deactivate: Deactivates all receive store transmitter memories on the motor, other settings are not changed or cleared:



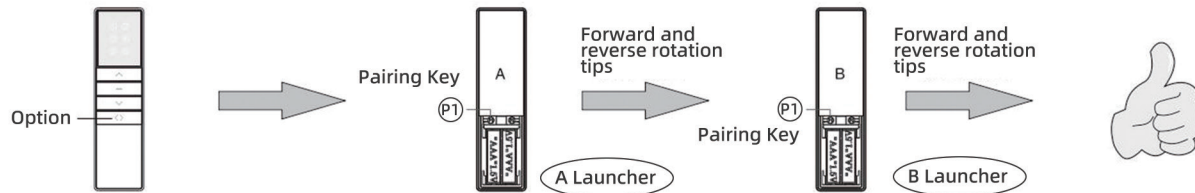
1. Press and hold the motor [setup key] for about 10s.
2. Press [SETUP KEY] again.

Spot/Continuous Mode Mutual Late: The motor is defaulted to continuous mode before shipment, after reporting to spot mode, long press and hold [up key] or [down key] for about 25 the motor will be continuously running.



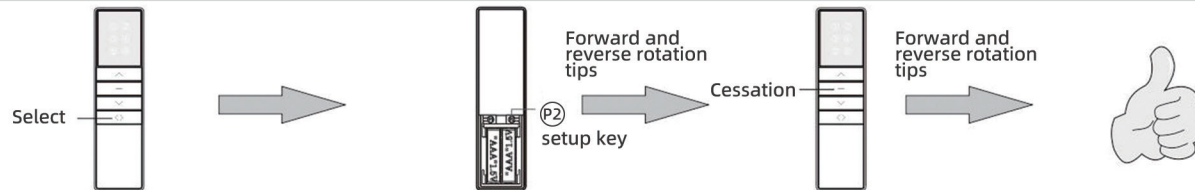
1. Choose the channel that has been matched to the code.
2. Press and hold down the transmit key [P2] key for about 10s
3. Press [Up Ken] for 5s within 10s after the motor stops.

Copy: Add a new transmitter to an already coded motor.



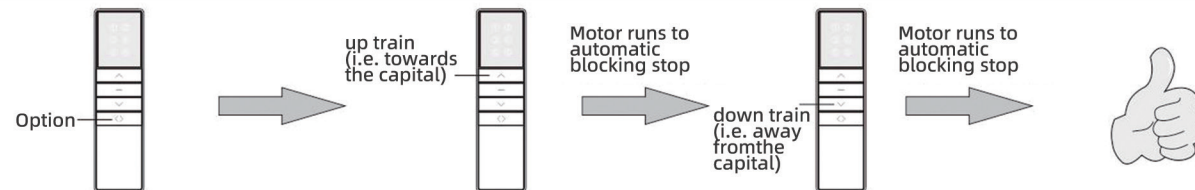
1. Choose the channel that has been matched to the code.
2. Long press the transmitter (P1) key for about 10s
3. Press the B transmitter [P1] key within 10s after the motor stops

Reversing direction: Switch the direction of motor operation on the upper code. For example: switch forward, press the transmitter up button, curtains run down: after switching, press the transmitter up button, curtains run up.



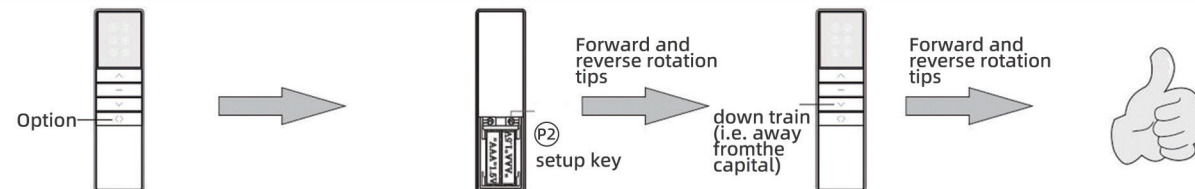
1. Select the channel that has been matched to the code.
2. Press and hold the launcher [P2] key for about 10s
3. Press [stop button] about 5s within 10s after the motor stops

Setting the trip.



1. Select the channel that has been paired with the code.
2. Press the launcher [up] key
3. Press the transmitter [down] key

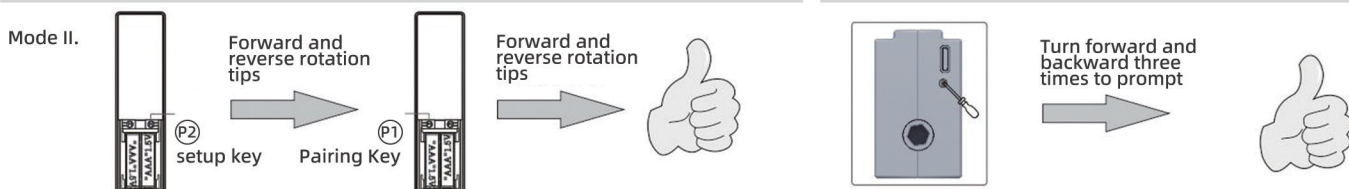
Stroke Trim: Default stroke in place with a gap, can be set to no gap



1. Select the channel that has been paired with the code.
2. Press and hold the launcher [P2] key
3. Press and hold the launcher [down] key

Stroke deletion: Mode 1: Stroke will be cleared if there is a blocking stop during operation with stroke.

Rotation speed setting: 2 speeds adjustable, factory default 1st speed.



1. Long Search Launcher [P2] about 5s
2. Press the launcher [P1] button
1. Press and hold the [Setting key] of the motor for about 15s