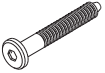


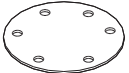
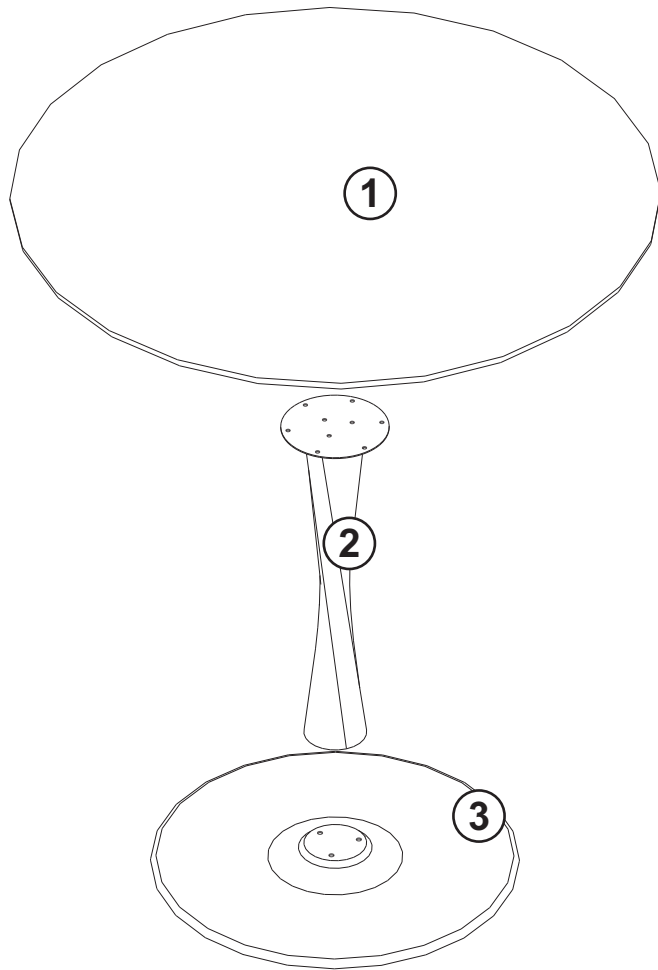
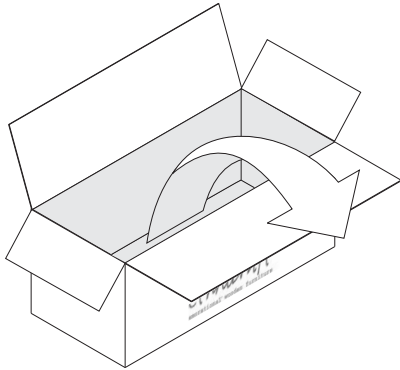
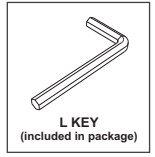


50012 OAK TORSION DINING TABLE ASSEMBLY INSTRUCTION FOR TABLE INSTALLATION

HARDWARE ENCLOSED

			
JCBC SCREW M8x80 (3X)	JCBC SCREW M8x16 (9X)	METAL PLATE (SMALL) (1X)	METAL PLATE (LARGE) (1X)

TOOL



IN YOUR PACKAGE :

ASSEMBLY INSTRUCTION
HARDWARES (AS LISTED ABOVE)

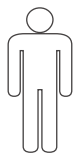
PARTS TO BE INSTALLED

1. TABLE TOP 1 pc
2. CENTER LEG 1 pc
3. LEG BASE 1pc

SYMBOLS



DIRECTION

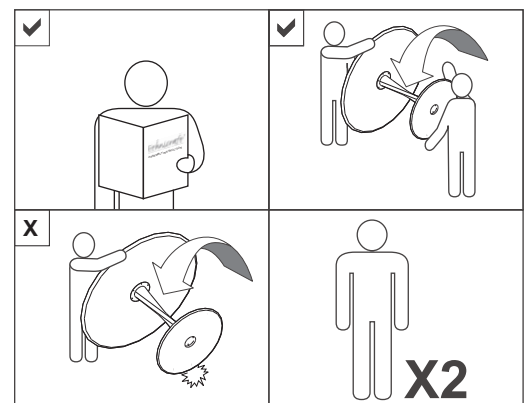


NUMBER OF
PERSONS NEEDED



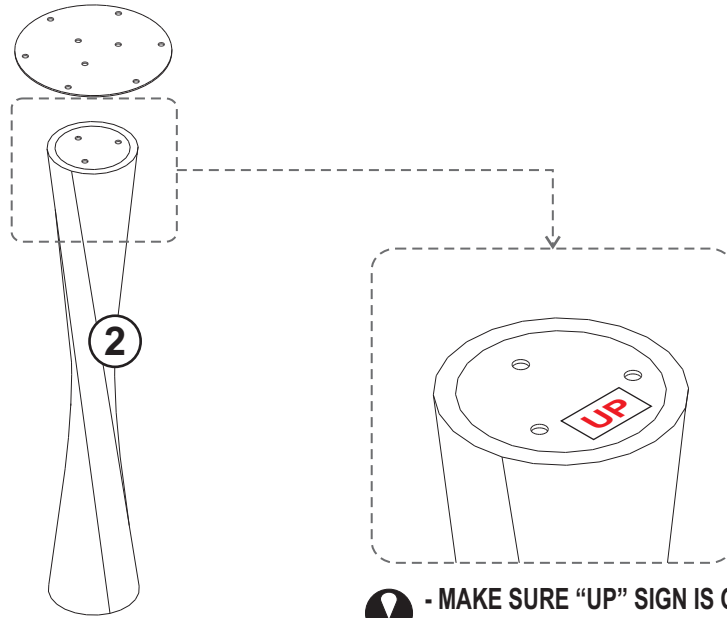
USE L KEY
TO TIGHTEN

NOTICE

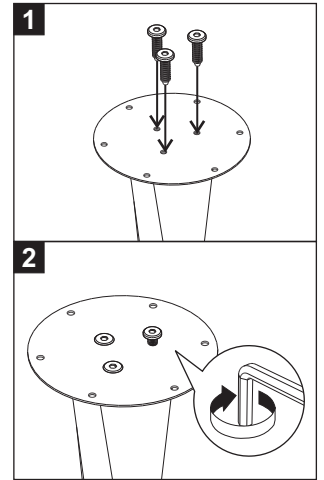


50012 OAK TORSION DINING TABLE ASSEMBLY INSTRUCTION FOR TABLE INSTALLATION

A INSTALLING METAL PLATE TO THE CENTER LEG

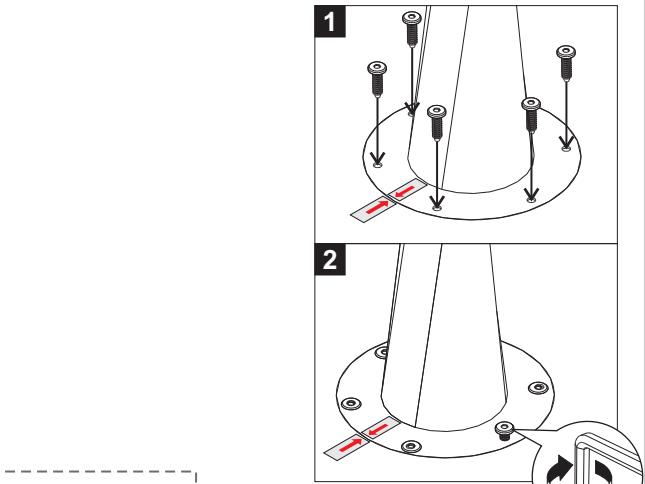
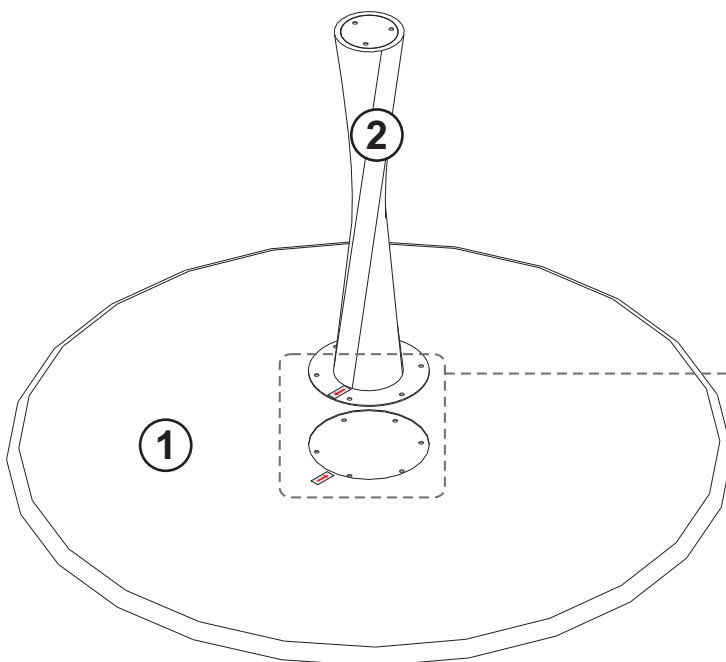


- ! - MAKE SURE "UP" SIGN IS ON TOP / ABOVE
- USE THE SCREW M8x16

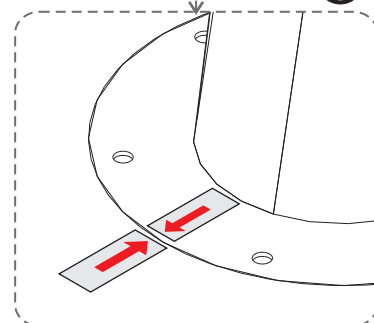


! TIGHTEN FULLY

B INSTALLING CENTER LEG TO TOP TABLE



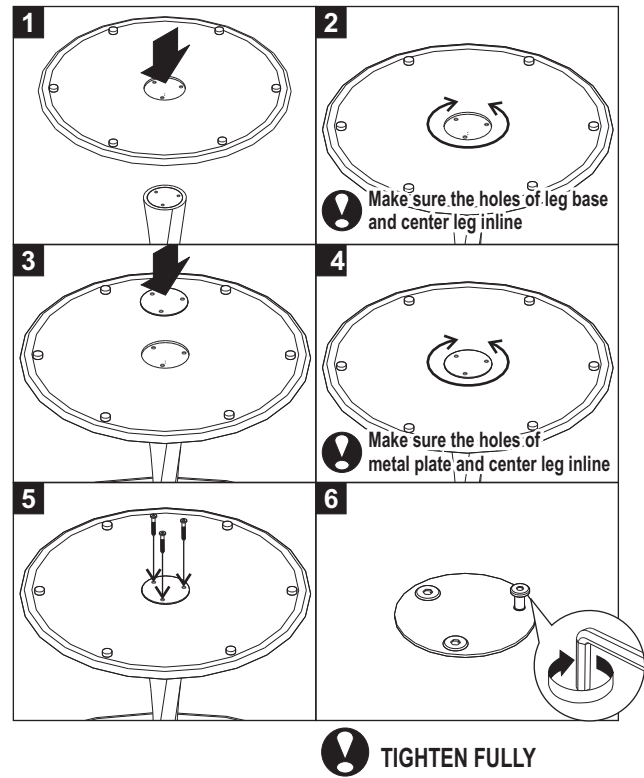
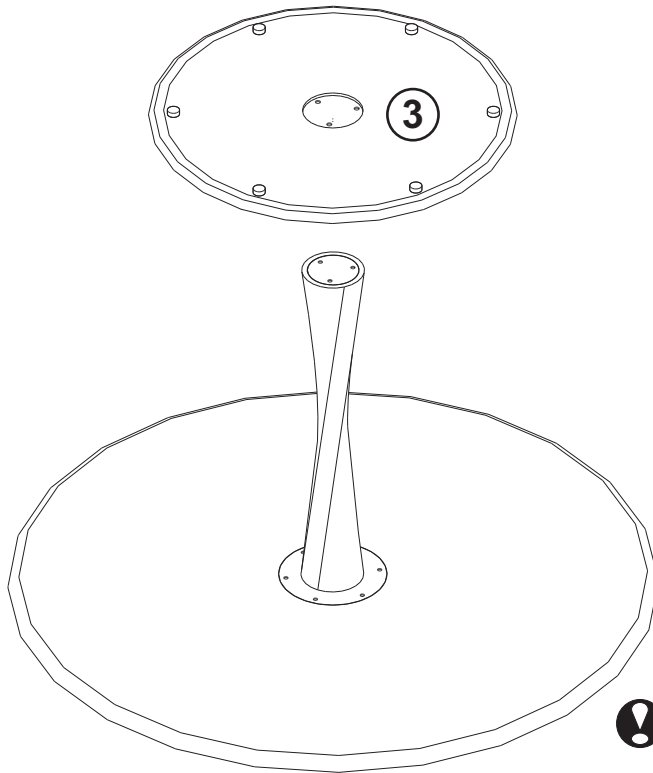
! TIGHTEN FULLY



- ! - ALWAYS REFER THE STICKER
- USE THE SCREW M8x16

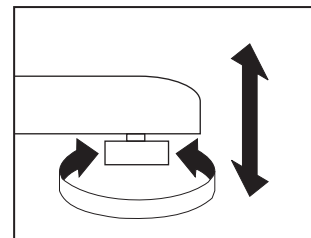
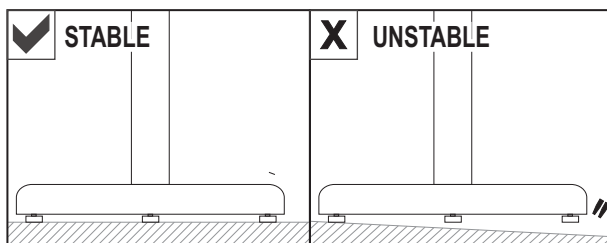
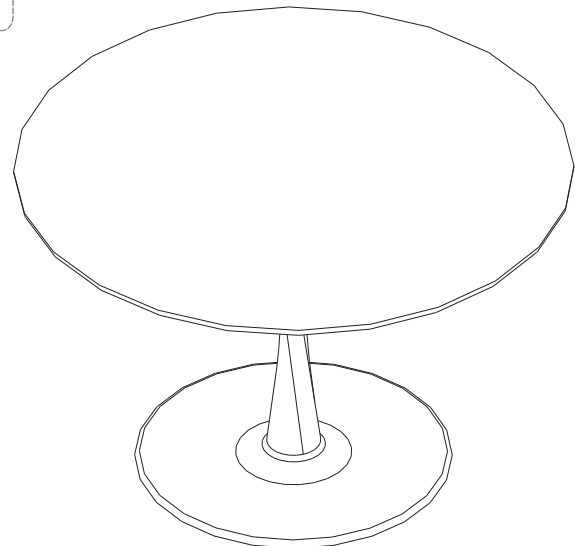
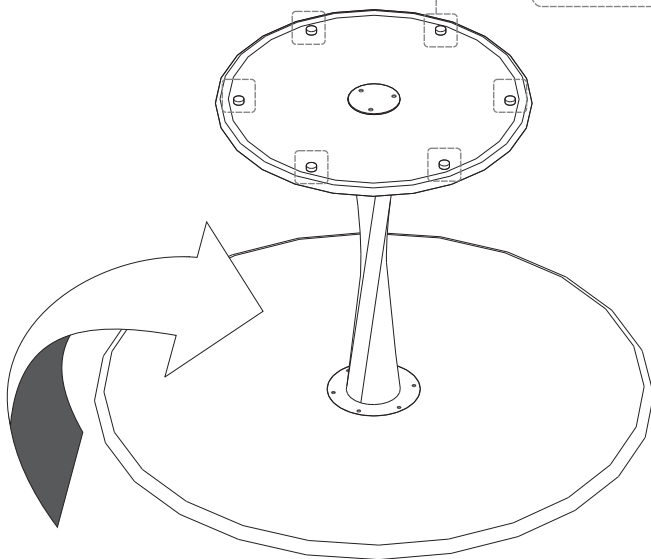
50012 OAK TORSION DINING TABLE ASSEMBLY INSTRUCTION FOR TABLE INSTALLATION

C INSTALLING LEG BASE



D ADJUST LEVELER

LEVELER / RUBBER PADS POSITION



NOTE :
THIS IS A COMPULSORY ACTION TO MAKE SURE ALL OF THE RUBBER PADS TOUCH THE GROUND!