

USER MANUAL

PLEASE READ THE INSTRUCTIONS CAREFULLY BEFORE RIDING

MUKUTA



 TEMPERATURE CONTROL

 NFC

 OFF - ROAD

 DUAL MOTOR

 HYDRAULIC BRAKE

CONTENT

GENERAL INFORMATION	1
MUKUTA RANGE-CONTROL LAYOUT,FUNCTIONS AND SPECIFICATIONS	2~3
INTELLIGENT TEMPERATURE CONTROL MANAGEMENT SYSTEM	4~5
MUKUTA DISPLAY OPERATION AND PROGRAMMING	6~15
FOLDING HANDLE BARS	16~17
BATTERY AND CHARGING	18~19
PRE RIDE CHECKS	20
WARNING	21
LIMITED WARRANTY	22~23
ERROR CODES	24~25
INCLUDED IN THE BOX	26
AFTER-SALES SERVICE	27~28

READ THIS MANUAL BEFORE USING

IMPORTANT INFORMATION

WHY IS IT NECESSARY TO READ THIS MANUAL BEFORE OPERATING?

This manual was written to help you understand the proper use and maintenance of the MUKUTA line of Electric Scooters.

It is important to understand the functions and features of the new MUKUTA before operating it as it will allow you to enjoy the most of it from the first and every ride.

It is also important for you to note that the first trial of the MUKUTA should be in a remote area where obstacles are minimal to none.

The MUKUTA unit will require some adjustments and a break-in period for all moving parts to adjust themselves into the correct position.

BEFORE RIDING: Please ensure that the folding mechanism is firmly locked in place and that the safety lock is engaged.



DISCLAIMER & WARNING

The product and its brand MUKUTA are not liable for any accidental damages related to the usage of this product.

WARNING!

The responsibility for MUKUTA maintenance is yours! Proper and frequent maintenance will reduce the risks of injuries.

- ALWAYS WEAR A HELMET WHEN RIDING
- ALWAYS FOLLOW LOCAL LAWS AND REGULATIONS
- NEVER RIDE THE SCOOTER IN POOR VISIBILITY
- DO NOT DO STUNTS, WHEELIES or JUMPS IF YOU DO NOT HAVE THE PROPER SAFETY GEARS.

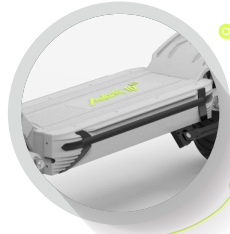
MUKUTA



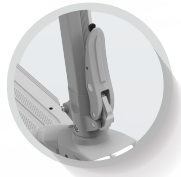
- MAX SPEED 46MPH
- ELECTRONIC BRAKE + HYDRAULIC BRAKE SYSTEM
- TURN SIGNAL



- HYDRAULIC BRAKE LEVERS
- NFC KEY LOCK
- SINGLE AND DOUBLE DRIVE SWITCH
- ELECTRONIC HORN



- CONTROLLER 60 V (32A)
- MAX RANGE DUAL DRIVE 31-37MI SPORT MODE 62-74MI
- BATTERY 60V 20.8A/60V 25.6A(LG)



FOLDING SWITCH



- 1400W REAR MOTOR
- DOUBLE SPRING DAMPING
- PNEUMATIC TYRE 10*3INCH
- HYDRAULIC DISC BRAKES



- HYDRAULIC DISC BRAKE
- 1400W FRONT MOTOR
- DOUBLE SPRING DAMPING

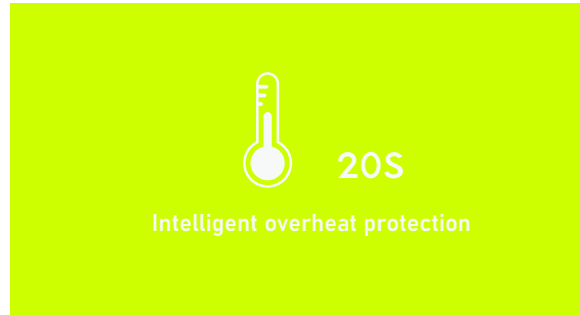
Model	MUKUTA 10PLUS
Battery	60V 20.8AH/60V 25.6AH
Tire	10*3 INCH
Brakes	ELECTRIC BRAKE+FRONT AND REAR HYDRAULIC BRAKES
Max Range(Single Motor)	62MI/74MI
Max Range(Dual Motors)	31MI/37MI
Max Speed	Dual Mode: 46MPH
Weight	80LB
Suspension	DOUBLE SPRING DAMPING
Motor Power	60V 1400W* 2 BRUSHLESS MOTORS
Controller	60V (32A)
Max Load	330LB



Maximum load and speed may vary depending on the rider's weight, riding style and terrain.



INTELLIGENT TEMPERATURE CONTROL MANAGEMENT SYSTEM



The motor controller/s fitted to your MUKUTA electric scooter feature overload protection. Should the controller temperature exceed the safety threshold, the management system will enter a 20s protection cycle. Should you experience a loss of power due to overload, please stop riding and allow the controller time to cool.



MUKUTA series electric scooter intelligent temperature control system

(A 165LB load was tested according to the summer climate)

Model	MUKUTA 10PLUS
Protection temperature (According to the local topography \pm 5°C)	90°C
Protection time (According to local climatic conditions \pm 5s)	20s



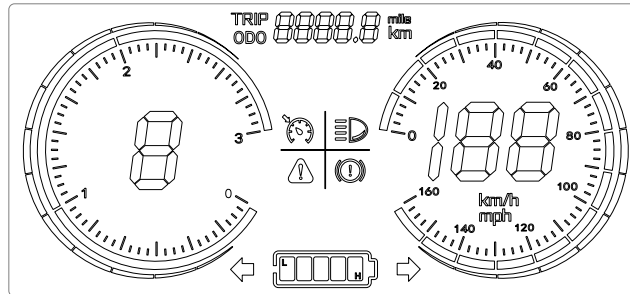
Basic operation:

1- Function

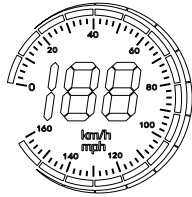
1. Displayed content

Speedometer / Voltage level / Odometer / Trip meter / Battery level / Cruise-control active light / Gear indicator / Fault warning light

2. All content on display(power on within 1 second)



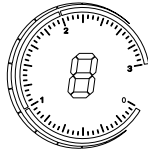
3.1 Speed display area



Unit: MPH, KM/H

The speed signal is taken from the Hall signal inside the motor. Sent to the controller by controller(Time of single Hall period,unit:1MS). The display calculate the true speed based on wheel diameter and signal data calculate the true speed(The motor Holzer also needs to set the number of magnetic steel)

3.2 Vehicle power gear adjustment,



0-3 digital display

3.3 vehicle status display area



Brake power off reminder;



The headlight turns on the prompt;



Constant speed cruise hint;



Communication fault prompt;

MUKUTA display operation and programming

Display P-Codes(programming codes)

To access this menu, long-press  and  . Use  button to scroll through P-codes,  and  to change parameters

P01: Backlight brightness: The 1 level is the darkest, Level 3 brightest; Default: 3

P02: Mileage: unit, 0: KM; 1: MILE; Default: KM

P03: Voltage level: 24V, 36V, 48V, 52V, 60V, 72V, Default: 60V

P04: Dormancy time: 0 means no dormancy; Other numbers are dormant time. The range is 1-60 minute. Default: 5

P05: Reserve

P06: Wheel diameter: The unit is the inch. The accuracy is 0.1; Default: 10.0

P07: Speed measuring magnetic steel number. The range is 0-255. Default: 28

P08: Rate-limiting: The range is 0-100km/h. Default: 28

P09: Zero start no zero start setting; 0 means zero starts. 1 means no Zero starts. Default: 0

P10: Reserve

P11: EABS switch choose. The range is 1-5. 0 means closing. 1 means weakest. 2 means strongest.

P12: Soft and hard start strength. The range is 1-5. The softest is 1. The hardest is 5. Default: 5

P13: Reserve

P14: Reserve

P15: Controller under-voltage

P16: ODO Zero setting: keep pressing + for 5 seconds, and ODO will zero clearing.

P17: When it shows 0, it can not use cruise. When it shows 1, it can use cruise. Default: 0













P18: Bind and unbind NFC CARDS. Long press "+" to build the binding, long press "-" to build the unbinding

P19: Reserve

P20: Communication protocol is default 4. It can not change.

2、 Introduction of buttons and interfaces



1. When it is shut down, long-press hold button continuously for 2s  to turn on the power. When it is powered on ,It can change interface between the ODO、 TRIP、 VOL, by pressing  for a short time.
2. When it is powered on, long-press hold button continuously for 2s  to turn off,press   to change gear.
3. Long-press  and  to enter P-code menu - refer to functions on page 8.
Enter the menu setting interface, press  or  to increase or decrease the value , after the modification is finished;Press  to switch to the next parameter and save the value of the previous parameter;After parameter modification, long press  +  again to exit the setting interface, or wait for 8 seconds for automatic exit and save parameters.

3、 Card binding instructions

1.The instrument is not bound to NFC card:

After starting up, the LCD displays the normal contents, At this time, the meter can directly enter the working state.


The diagram below:




2.How to bind NFC card:

CARDS are bound by factory default

Late setting: When using MUKUTA NFC functional card binding, refer to the following methods

Long press  for 5 seconds to display B 0. At this time, the NFC card is close to the card swiping area and B 1 is displayed, indicating that the card is tied successfully and the default is unlimited.

Press  for 5 seconds to display C 0. At this time, all NFC cards that have been unbound are displayed.

3. The instrument has been bound with NFC card: after starting up, the LCD displays card, the power voltage is not displayed in the card swiping area, and the swiping indicator flashes, indicating that the card needs to be swiped to start up. At this time, the accelerator does not work.

The diagram below:



Note:

1. The display failure caused by unauthorized use of phone NFC or non-Mukuta NFC will not support the warranty.
2. Due to the upgrade of the company's products, some of the displayed contents of the products you get may be different from the instructions, but it will not affect your normal use.
3. If the NFC cards are lost accidentally, you can try to contact the local agents. (each E-Scooter is equipped with 3 keys).




1. Horn
2. Single motor dual motor switching
3. NFC
4. Downshift button
5. Upshift button / Turn on the light
6. Power switch

7. Displayer
8. Handle folding mechanism
9. Brake
10. Turn signal



Power On/Off	Long-press the power button [6] for 2 seconds to turn on/off the scooter, then use NFC card to activate it. The scooter turns off automatically if not used for 90 seconds
Speed Control	Press the [4] or [5] button to cycle through the three different speed levels 1 to 3. Use the throttle to control the speed within each speed level.
Headlight	While power is on, Long-press (press and hold for 2s) and hold [5] button to turn on or off headlight.
Mileage & Other data	While stationary, and with the power on, Long-press (press and hold for 2s) and release the [6] button to cycle through the following data: ODO (lifetime mileage), TRIP mileage, VOLTAGE level and ERROR CODE.

TURNING IT ON



Press the  for 3 seconds and wait to be prompted for the Token (Card).

Tap the Token (Card)  to the IR reader NFC

P-SETTING

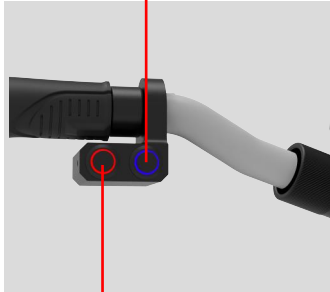
Press and hold both  and  simultaneously for 3 seconds to access the P Setting interface.

CHANGING OF SPEED

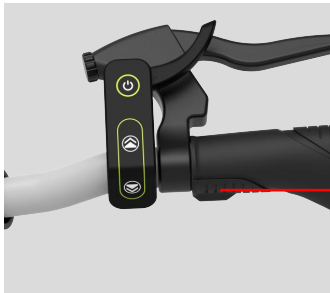
Press the  once or the  to toggle between increasing between 1 to 3.

Function is to limit max limit, 3 being themax speed able to achieve.

DDM: DUAL / SINGLE
DRIVE



HORN



BUTTON FOR TURN
SIGNAL LIGHTS (BLINKERS)

Press the



once to activate the Dual Drive Motor function.
Pressing it again will allow Single Drive Motor Function

Press the



once to activate the horn. Button are able to be hold
on or to press once.

Press the button and the light flashes. Automatic shutdown after
12 seconds. Turn signals can only be on one side at a time. One
side opens and the other side automatically closes

Folding handle bar

1

Turn the handle screw anti - clockwise to loose the mechanism



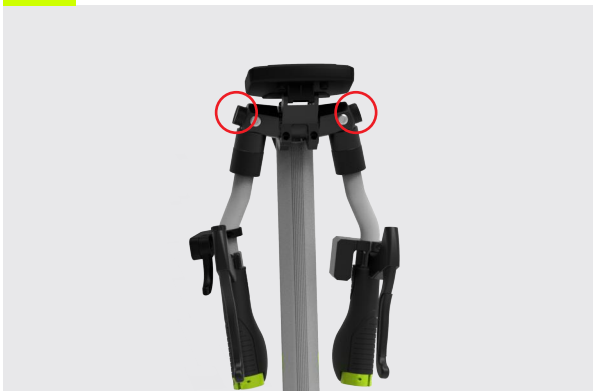
2

Once loosen, pull the screw catch away from each other



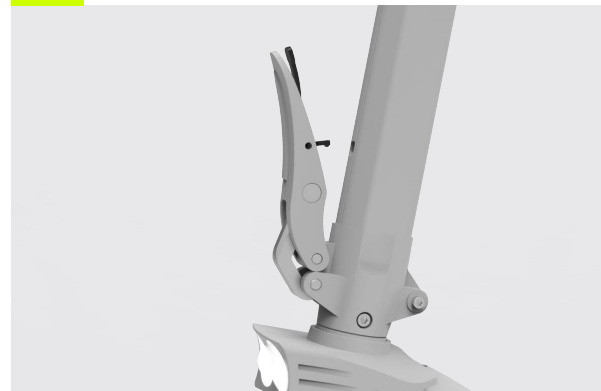
3

Simultaneously fold the handle bar down



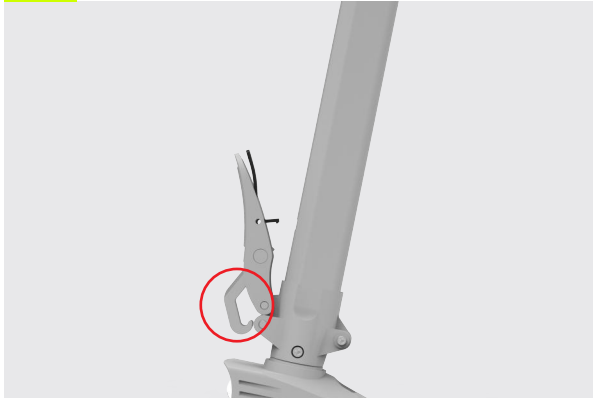
4

Loosen the folding buckle



5

Take out the hook



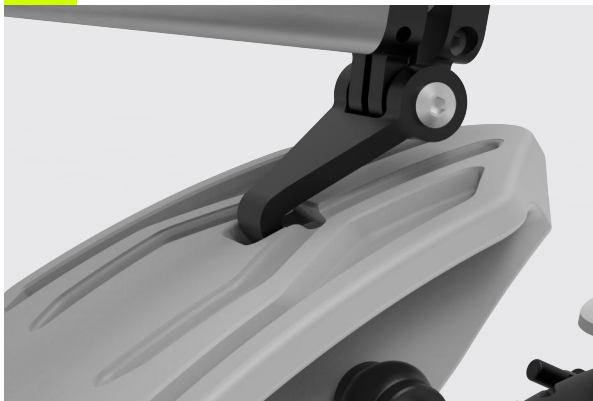
6

Fold down the main pole



7

Snap the handlebar's safety hook into the rear shim



BATTERY

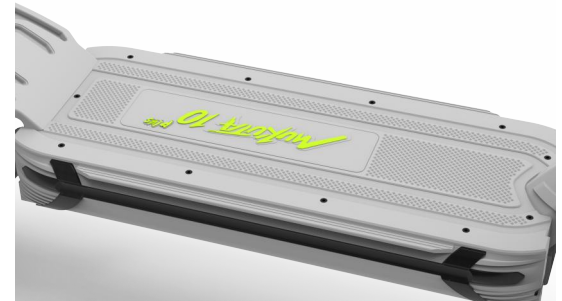
- Do not operate the scooter while charging
- Do not store the scooter over a long period of time with an almost empty battery.
- From time to time, discharge the battery by riding. Have the battery recharge again and make sure to not leave battery fully empty.

DISABLE CHARGING IN THE FOLLOWING CIRCUMSTANCES:

- Is broken
- Emits an unusual odour or colorless liquid.
- The bottom of the deck or it as a whole gets into excessive heating
- Leakage is present.

Avoid contacting with substances or meddling with a bloated battery. Keep the battery away from children, pets or direct heat. Exposure to the battery voltage may cause death or serious injury.

The use, storage or charging of the MUKUTA battery outside specified limits may result in the annulment of the warranty, battery damage and an effective battery charging.



It is important to fully charge the battery before your first use of the scooter.

First Charge

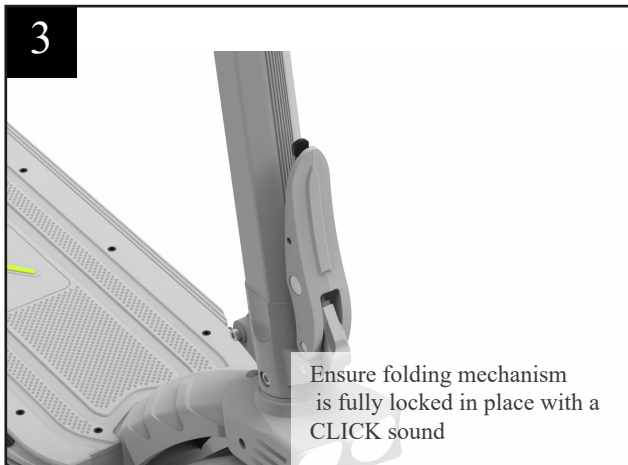
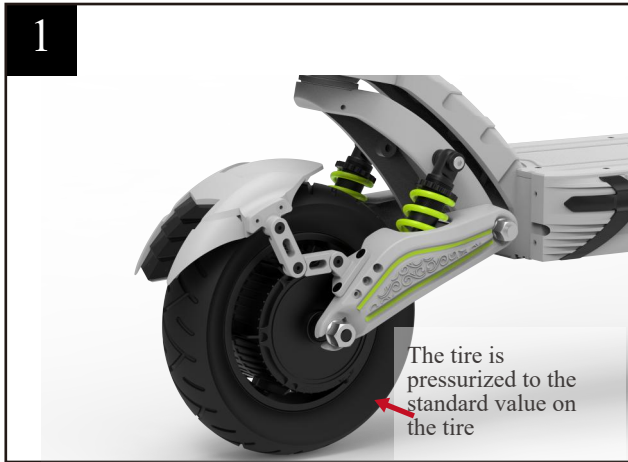
Your scooter's battery comes with these built-in features:

1. Balanced charging protection: During charging, the battery automatically balances the voltage among the internal cells to protect each cell.
2. Over-charging protection: The battery stops charging automatically when full to protect against damage.
3. Over-current protection: The battery automatically stops charging if the voltage is higher than prescribed voltage to protect the battery.
4. Over-discharging protection: The battery automatically stops discharging when its voltage drops below Under voltage value to protect the battery.
5. Short-circuit protection: the battery automatically stops output in the case of a short-circuit.

How to charge

1. Ensure that scooter is TURNED OFF. Connect external power charger to scooter.
2. Connect charger to electrical outlet, then turn on the power of electrical outlet.
3. Do not charge the batteries in temperatures below 5 °C or above 40 °C. The battery may stop the charging process.
4. Charging Light **RED** - Battery is charging.
Charging Light **Green** - Battery is fully charged.

PRE RIDE CHECKS





WARNING!

Certain countries of regions require safety devices or gear. It is your responsibility to know the state laws and follow them. However, we strongly recommend using safety equipment correctly before riding scooter.

TIRE AIR PRESSURE: THE TIRE IS PRESSURIZED TO THE STANDARD VALUE ON THE TIRE

SAFETY GEAR

Helmet: Most common and serious injuries from riding are head injuries. This can be prevented by adorning a helmet. You must wear a helmet when riding the MUKUTA. The helmet must be worn according to their instruction.

MECHANICAL SAFETY

Before using the MUKUTA:

- 1) Always perform a visual inspection of all screws and nuts are tight and in place. If anything is amiss or missing and you are unsure, please bring it back to the authorized distributor or contact us via email.
- 2) Check the tires and wheels and that it is not showing signs of wear and tear; not in need of replacement. Always ensure that the brake mechanism is not touching the wheels and allows free spinning.
- 3) Always perform mechanical checks of brakes and other parts of the scooter that allows visibility, safety and functionality of the scooter.

Limited Warranty

BY USING THIS PRODUCT YOU AGREE TO THIS LIMITED WARRANTY. PLEASE READ THIS LIMITED WARRANTY CAREFULLY.

To benefit from the limited warranty, the customer is advised to read MUKUTA Warranty terms together with the “care and maintenance” sections provided in the user manual. This limited warranty applies to the extent permitted by law and unless restricted or prohibited by law.

Limited Warranty Details

1. MUKUTA warrants that MUKUTA scooter products (“Products” or “Product”), are free from defects in material and workmanship, according to the following terms and conditions:
2. This Limited Warranty extends to the original purchaser of the Product warranted under this warranty and to each transferee of the Product during the first _____ months beginning on (date) _____ as stated below (“Warranty Period”).

This Limited Warranty covers the Product and each of its following component parts (“Components”) only:

- a. Hub motor;
 - b. Battery packs (except if battery was short-circuited or seals of the battery enclosure or cells were broken or were tempered or the battery was used in equipment other than its intended use);
 - c. Controller;
 - d. NFC Display;
 - e. Charger unit;
 - f. All other electrical wiring and components.
3. During the Warranty Period, MUKUTA or its authorized service centres will repair or replace, at MUKUTA’s option and without costs to the customer, any defective Components with new or factory rebuilt replacement items, and return the Products to the customer in working condition, provided that the terms and conditions of this Limited Warranty are met. All defective Products or Components that have been replaced shall become the properties of MUKUTA.
 4. Products and/or Components that have been repaired or replaced pursuant to the paragraph above will be covered by this Limited Warranty for the balance of the Warranty Period.
 5. This Limited Warranty will only be effective when presented together, to either MUKUTA or its authorised centres, with proof of date and place of purchase of Products such as the purchase receipt.

What this Limited Warranty does not cover:

1. Products used for commercial purpose(s) including but not limited to leasing/hiring, use in competitions, etc
2. Any logistical costs of returning the Product to MUKUTA or its authorised service centres for servicing or the cost of returning the Product to the customer after servicing.
3. Defects or damages resulting from use of the Product(s) other than its normal and customary manner as stated in the user manuals accompanying the Products.
4. Defects or damages from improper storage, exposure to moisture or dampness, modifications, connections, repairs (except as carried out by MUKUTA or its authorised centres), misuse, neglect, abuse, accident, alteration, improper installation, or other acts which are not the fault of MUKUTA, including damage caused by dropping, blown fuses, spills of food or liquid.
5. Defects or malfunctions of the product not notified by customer during the Warranty Period.
6. Products which have had their serial numbers removed or tampered with.
7. This Limited Warranty is in lieu of all other warranties, express or implied either in fact or by operations of law, statutory or otherwise, including, but not limited to any implied warranty of marketability or fitness for a particular use.

Disclaimer:

1. The customer understands the risk of serious injury or death in the operation of such products and shall agree to take the **necessary precautions** and exercise **good judgment** to avoid hazards and dangerous situations which may result in serious injury or death.
2. The customer shall agree to indemnify and hold harmless MUKUTA from all injuries or death arising from the operation of the product.
3. The use of safety and protective gear such as bicycle helmets is strongly encouraged. And so is the use of Good Judgement.
4. The customer is advised to take the following precautions:
 - a. Do not ride on wet ground or in heavy rain;
 - b. Take corners slowly and look out for pedestrians;
 - c. Avoid potholes, curbs and debris on the ground;
 - d. Keep tires pumped to the specified pressure;
 - e. Dismount in places with heavy human traffic and push the scooter manually;
 - f. Service the product every 3 months on regular usage, 6 months for non-frequent usage;
 - g. Do not use product on public roads and respect local road regulations.

How to request service under this Limited Warranty:

To obtain performance of MUKUTA to repair and/or replace the Product or its Components under this Limited Warranty, the customer must, during the Warranty Period:

1. Bring this Limited Warranty, proof of purchase and the Product to MUKUTA.
2. Provide MUKUTA with a written description of the problem.

The average repair time is 1 to 3 days, not including shipping time to and from our service centre.

This warranty does not cover the shipping costs associated with the transportation of the scooter to and from our service centre, and a fee will be charged for return shipping or pick up and delivery service.

What can the consumer do in case of a dispute with MUKUTA

The consumer and MUKUTA agree that in the event of a dispute arising from the material and workmanship of the Product; or from this Limited Warranty, parties will attempt to first resolve the matter by negotiating in good faith.


ERROR CODE


Error Code	Fault	Diagnostic Step	Resolution
00	Normal Status	Normally ok; Turn off and on the scooter to see if the error persists	Normally ok
02	Brake	Check brake lever on handlebar and see if brake springs back all the way	Give the brake lever a few hard presses to ensure that it is not stuck; If jammed, then unclog the source of the jam
		Check brake caliper to see if the brake line is springing back to original position	If brake caliper is not springing back, spray some WD40 to make sure it springs back to original position
06	Battery Undervoltage	Check LCD settings P03 and P15; Give battery a full charge to see if issue persists	P03 should be in accordance with the voltage specified in the user manual. P15 should be the specified voltage - 49V
07	Motor Fault	Unplug and plug motor connector back in to see if issue persists	If problem is resolved, then make sure connector is pushed in all the way.
		If issue persists; check motor wire and connector pins to see if there are any issues	Either replace the motor or replace motor wire.


ERROR CODES


Error Code	Fault	Diagnostic Step	Resolution
08	Turnstile Fault	Check if back screw or magnet has come loose in the throttle/LCD	Tighten back screw or replace magnet in the throttle
09	Controller Fault	Replace controller	Replace controller
10	Communication Receiving Fault	Unplug and plug in LCD connector and see if issue persists; IF issue persists, then wiggle the LCD wire in different directions to see if problem persists	Change of wiring hardness from LCD to controller might be needed if the issue persists
11	Communication Transmission Fault	Unplug and plug in controller connector and see if issue persists; IF issue persists, then wiggle the LCD wire in different directions to see if problem persists	Change of wiring hardness from LCD to controller might be needed if the issue persists


NEW MODELS ARE COMING SOON

 Web:www.mukutariding.com

 Facebook:Mukuta

 Instagram:mukuta_scooters

 YouTube:mukutariding

 E-mail:
Sales@mukutascooter.com
Sales@mukutariding.com

USER MANUAL

NINGBO MUKUTA INTELLIGENT TECHNOLOGY CO., LTD

