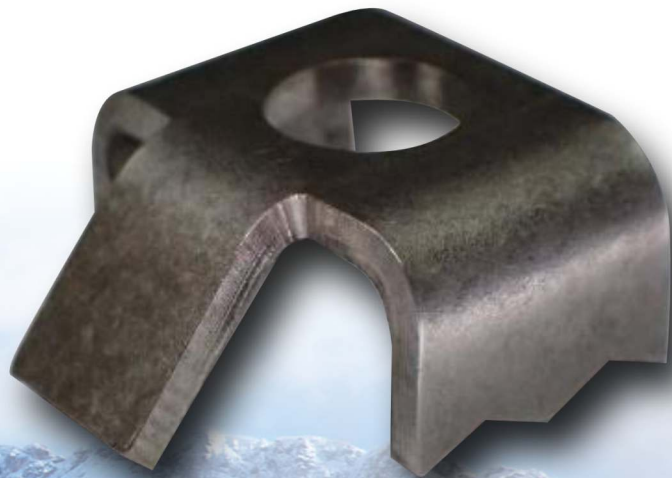


PLACA ECH-22



Data sheet ECH22 Plate

Descripción

.
f
t
/
r
€
V
E
t
€



Descripción

The **ECH22** plate is a complement for hanging installations with very light rope, stands out for its small volume, versatility, resistance and its weight of 10 grams.

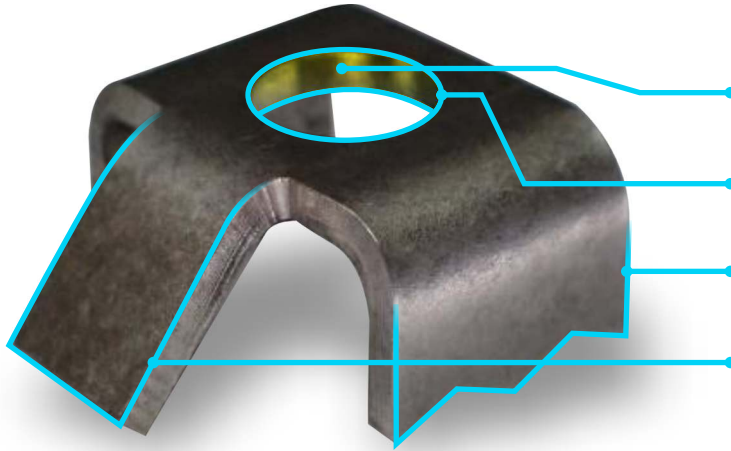
It has been designed, thought and tested for **explorations in both canyoning and speleology**. Its characteristics and dimensions allow to carry a large number of plates for systems that need to be mounted, handrails, detachments such as speleology fractions, mono points or V-shaped heads for canyoning.

There is no specific regulation governing it, its use and application makes standardisation unnecessary.

The combination (parabolt, self-threading or self-perforating) + ECH22 plate + cord + maillon, configures a fixation whose purposes be used in field exploration.

Each user should carry out the appropriate analysis according to their circumstances and adopt the appropriate safety factor accordingly. In speleology and canyoning it is considered that, on exploration ground, **the attachment as a whole must withstand at least 15 kN.**

Especificaciones técnicas



- **-Material:** Stainless Steel 304/2B- D2.
- **-Thickness:** 2 mm.
- **-Weight:** 10 g/ 0.02 lb.
- **-Hole diameter:** 10.2mm/ 0.4" inch.
- **-Coord. O Max:** 07mm.
- **-Teething:** Prevents turning once the anchor is tightened with the tightening torque indicated by the manufacturer.
- **-Front fin 45° :** Strengthens the anchorage in shear.



Types of anchors for your use **Cord - mallets**

The combinations in the whole system that is mounted for descending are configurable in terms of types of **anchors, cords and mallets**, these we can choose according to our rope diameter.



— **Stone Thread**
(máx. ϕ 10 mm)



— **Parabolt**
(máx. ϕ 10 mm)



— **Dyneema cord**
(5 mm)



— **Auxiliary cord**
(7 mm)



— **Self-drilling stud**

It is very important that the M8 screw is replaced by another 10mm longer go when installing the ECH22.



Nudos

The knots that have been used with ECH and ECH22 plates in exploration and tests are:

- **Double Fisherman** for the rings on the single points.
- **Cow tail** on the premises in V.
- **Crossbow** for the maillon placed on the resultant lares of a headboard in V.



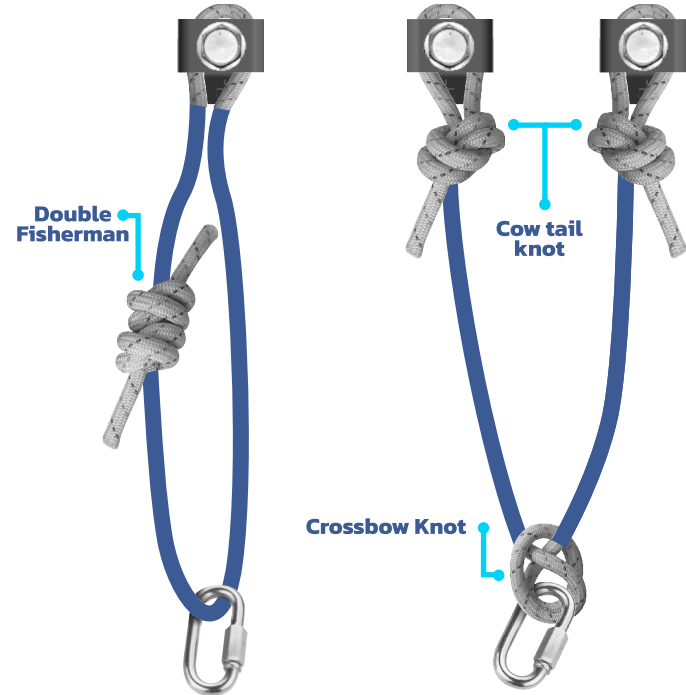
Double Fisherman



Cow tail knot

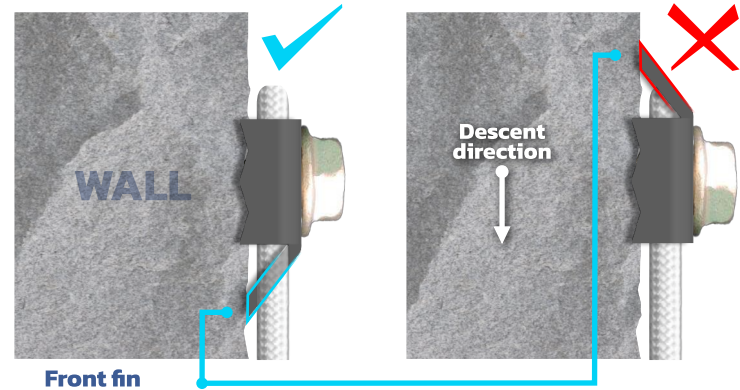


Crossbow Knot



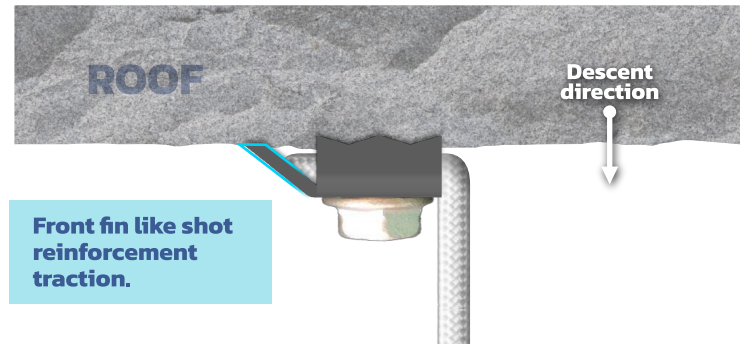
Placement

The position of the **ECH22** plate will always be the one observed below, this position makes its geometric shape act and work with more resistance on the anchor. **The position of the front flap of 45°, shall always be oriented in the direction to which the descent will be carried out**, not the other way around, so that the 45° leg helps and strengthens the anchor in the torsion exerted by shearing, the direction of descent.



Roofs

En el caso de techos sacaremos el cordino por la parte opuesta a la aleta de 45°, solo por ese lado, tal y como se muestra en las imágenes, de esa manera la aleta le dará refuerzo al leve alabeo atrás generado por la tracción.



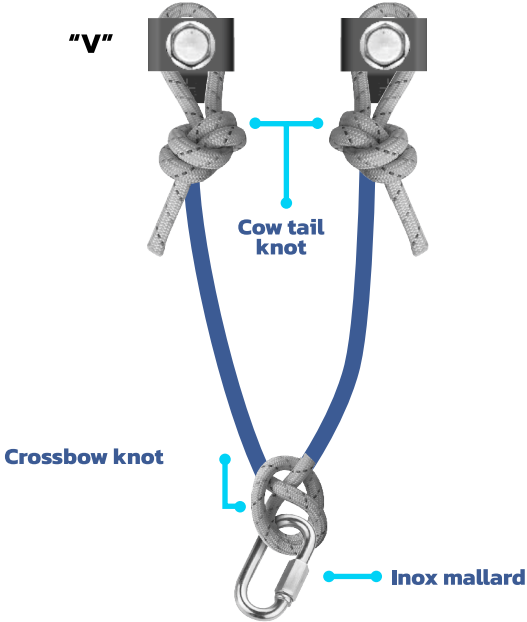
Handrails

In the case of a handrail they shall be positioned in the same way as a single point, in a downward direction, **as side one rapel would treat.**



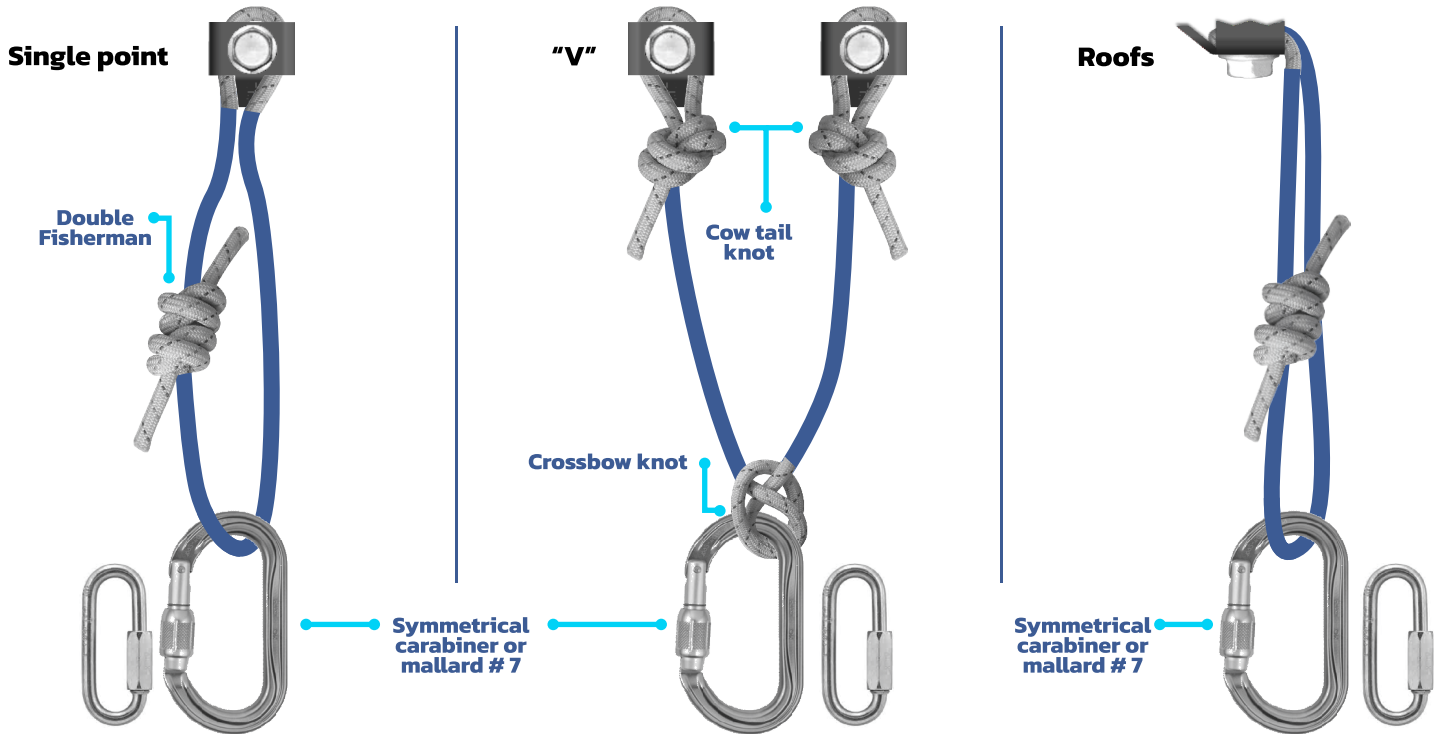
Recommended systems **Canyoning**

Configuration of headboard systems for **canyon descent**



Recommended systems **Speleology**

Configuration of headboard systems for **cave descent**



Warnings and recommendations:

The ECH22 plate has not optimal geometric characteristics for use in the parabol expansion process, **therefore we will never use the ECH22 plate for this purpose.**

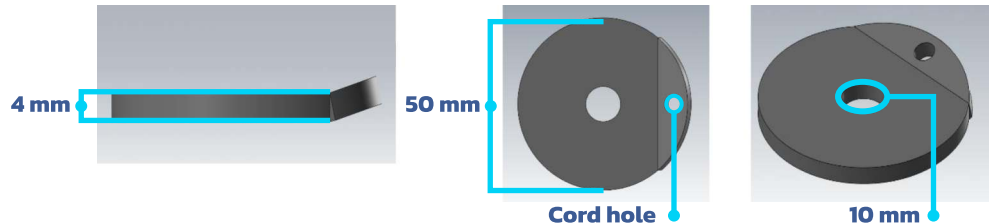
If we perform this action, the plate would bend, losing its physical and mechanical properties, which are the ones that give efficiency and robustness to the whole suspension system.



The usual ist to use conventional parabol plate for the expansion process of the parabol anchor.

The existing hole of the ECH22 plate is intended for the cord, this hole must be taken into account when tightening the parabol nut, the stone screw, or the self-perforating expansion anchor screw commonly known as spit.

It is recommended to do the process of expansion of the parabol, with a washer of 4mm thickness, by 10mm diameter in the central hole, by 50mm diameter outside, this useful is to use it in the absence of a conventional parabol plate.



Carrying plate and anchor (multimonti screw)

A practical way to carry the **ECH plate** together with the anchor – In this case a rock screw. It is by using an elastic (rubber alloy) the way to install it is shown below step by step.

- 1- Install the plate on the screw and place the elastic.**
- 2- Pass the league wrapping the plate with both ends.**
- 3- Secure the elastic so that it does not loosen.**



PLACA ECH22



placaech22



+34 674 69 28 83