

ULTIMATE HARMONY



ASSEMBLE MANUAL

Read and understand these instructions before you begin the assembly. The bike comes partly assembled, and it is important to read the manual carefully before starting assembly, so the bicycle will be assembled in the correct order. It is recommended to be two people to assemble the cargo bike. Be aware that the bike must be re-tightened after approx. 20 km. Make sure to check all parts of the bike and re-tighten all moving parts, including breaks, spokes, bolts and nuts.

Step 1: Mounting of fenders, front wheels and breaks

- When the parts have been taken out of the boxes and wrapping, place the front frame upside down on a table (<55 cm wide) - see picture 1A.



Picture 1A

- The two front fenders is mounted using the four small allen key bolts – see picture 1B and 1C. Notice that the front fender fittings on top of the fenders are mounted later in the proces.



Picture 1B



Picture 1C

- The break discs are mounted on the front wheels – remember to match the direction of the discs and the wheels. See picture 1D and 1E.



Picture 1D

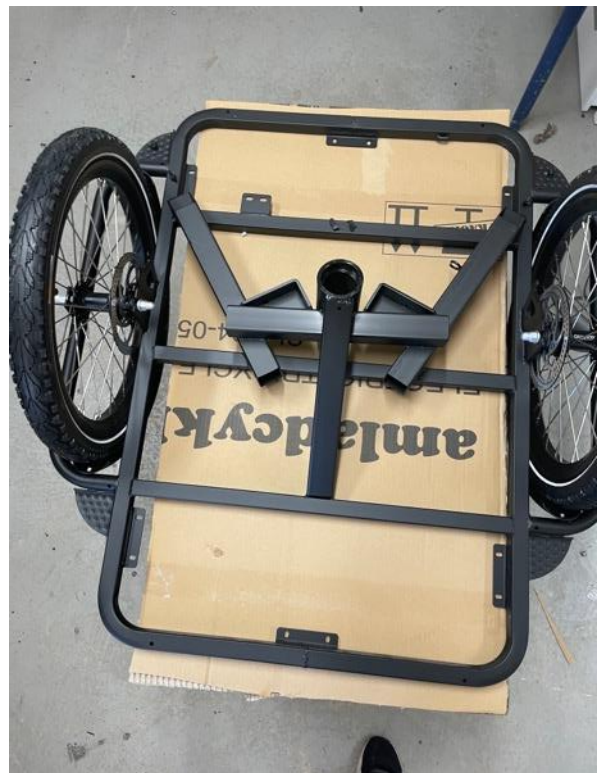


Picture 1E

- The front wheels are mounted – see picture 1F and 1G. Notice the direction of the wheels – they must be mounted like shown in the pictures.



Picture 1F

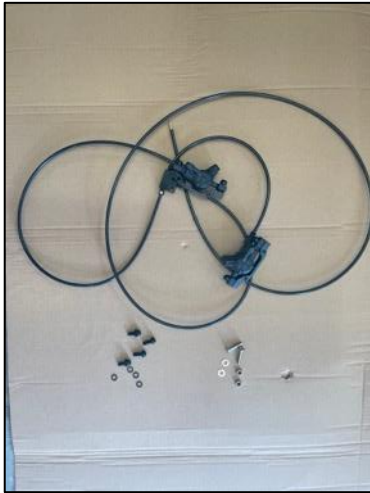


Picture 1G

Amcargobikes

Cargo bike enthusiast since 1992

- The hydraulic break kit for the front breaks is mounted like shown in the pictures 1H, 1I and 1J.
- First the piece connecting the cables is mounted using the two blank bolts, washers and lock nuts.
- Secondly, the break calipers are mounted using the four black allen key bolts.
- The position of the break calipers versus the break discs are adjusted via the side-by-side adjustment bolts on the break caliper – see picture 1I and 1J. The break discs should in this way run freely without touching the break pads when the wheel is turned. It is however OK if there is a small "whisling" sound from the break when the wheel is turned – this will disappear after a few days of use.



Picture 1H



Picture 1I



Picture 1J

Amcargobikes

Cargo bike enthusiast since 1992

- The hydraulic break cable and -caliper for the back break is mounted by the back wheel (see picture 1K and 1L) and the cable is pulled through the back frame like shown on picture 1M and 1N. The cable is stripped by the back wheel so that it sits tight - see picture 1L and 1O.



Picture 1K



Picture 1L



Picture 1M



Picture 1N



Picture 1O

Step 2: Assembly of back frame and front frame

- The bearings should be lubricated with grease and the back frame and front frame is assembled with the main bolt and the bearings – see picture 2A and 2B.
- Notice that two of the big washers needs to sit between the bearings and the frame and the two other washers next to the bolt and the nut respectively – see picture 2C.



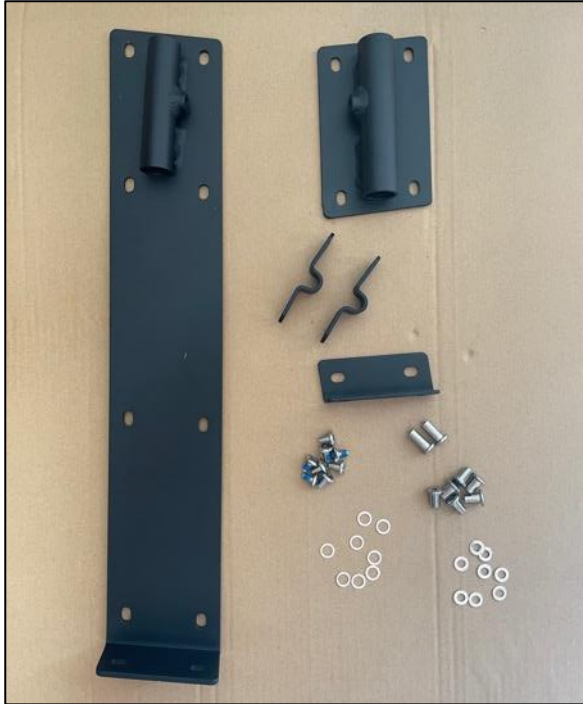
Picture 2A



Picture 2B

Step 3: Assembly of the cargo bike box

- Start with the assembly of the back plate and the left side plate using the fittings, bolts and washers shown below.



- 3 pc. fittings as shown in the picture
- 2 pc. cable holders
- 2 pc. long allen key bolts with female thread
- 6 pc. semi-long allen key bolts with female thread
- 8 pc. allen key bolts with male thread
- 8 pc. washers for bolts with female tread
- 8 pc. washers for bolts with male tread



Picture 3A

- First the fittings is mounted on the back plate as shown on picture 3A, 3B and 3C. Notice that the long allen key bolts with female thread must sit in holes marked with red arrows on picture 3B and 3C.



Picture 3B



Picture 3C

- Then the side plate is mounted – see picture 3D and 3E. Notice that the long allen key bolts with female thread must sit in holes marked with red arrows

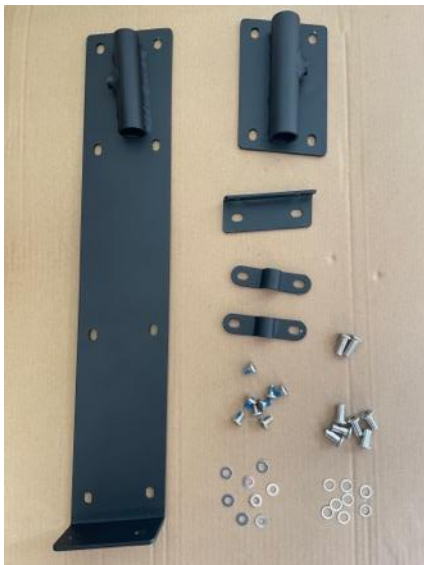


Picture 3D



Picture 3E

- The right side plate is mounted in the same way – see picture 3F and 3G.



- 3 pc. fittings as shown in the picture
- 2 pc. cable holders
- 2 pc. long allen key bolts with female thread
- 6 pc. semi-long allen key bolts with female thread
- 8 pc. allen key bolts with male thread
- 8 pc. washers for bolts with female tread
- 8 pc. washers for bolts with male tread



Picture 3F



Picture 3G

- Hereafter the front plate is mounted in the same way using the fittings, bolts and washers illustrated below – see picture 3H and 3I.



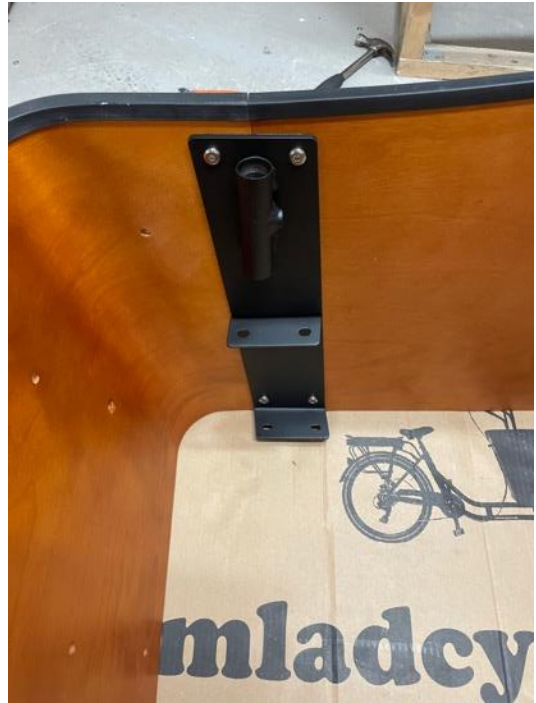
- 2 pc. fittings as shown in the picture
- 6 pc. semi-long allen key bolts with female thread
- 6 pc. allen key bolts with male thread
- 6 pc. washers for bolts with female tread
- 6 pc. washers for bolts with male tread



- 2 pc. fittings as shown in the picture
- 6 pc. semi-long allen key bolts with female thread
- 6 pc. allen key bolts with male thread
- 6 pc. washers for bolts with female tread
- 6 pc. washers for bolts with male tread



Picture 3H



Picture 3I

- Hereafter the to last fittings for the front plate and the back plate respectively is mounted. – see picture 3J and 3K.



- 1 pc. fittings as shown in the picture
- 4 pc. short allen key bolts with female thread
- 4 pc. allen key bolts with male thread
- 4 pc. washers for bolts with female tread
- 4 pc. washers for bolts with male tread



Picture 3J



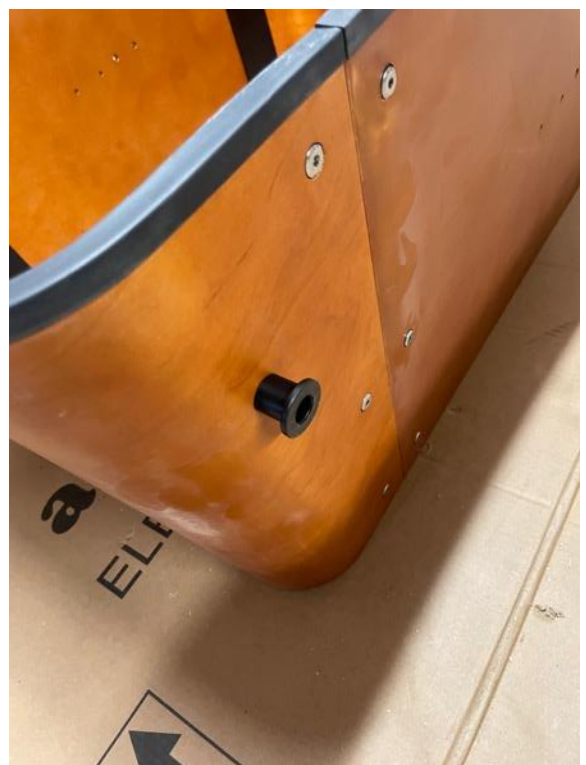
Picture 3K

Step 4: Mounting of the box on the frame and the rest of the equipment

- The plastic fittings for the canopy is mounted on the box – see picture 4A, 4B and 4C.



- 10 pc. plastic fittings for the canopy
- 10 pc. semi-long allen key bolts with female thread
- 10 pc. allen key bolts with male thread
- 10 pc. washers for bolts with female tread
- 10 pc. washers for bolts with male tread



Picture 4A



Picture 4B



Picture 4C

- The step boards are mounted as shown in picture 4D.



- 2 pc. step boards
- 4 pc. bolts
- 4 pc. washers
- 4 pc. nuts



Picture 4D

- The reflectors are mounted as shown in picture 4E.



Picture 4E

- The box and the bottom plate is now mounted on the frame- see picture 4F and 4G.



- 12 pc. bolts
- 12 pc. washers
- 12 pc. lock nuts



Picture 4G



Picture 4F

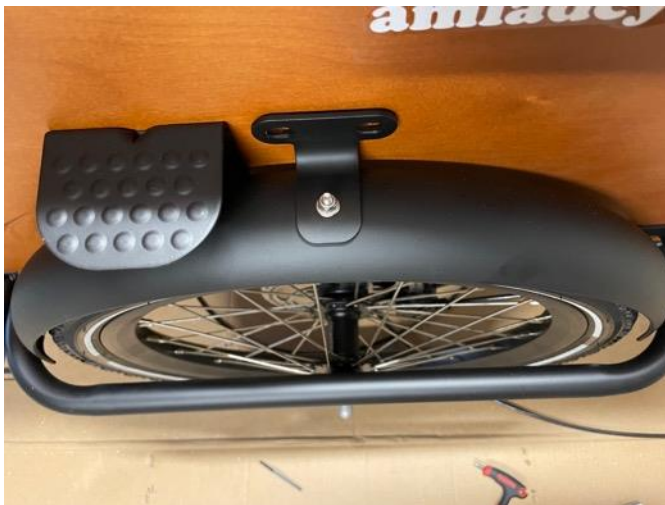
Amcargobikes

Cargo bike enthusiast since 1992

- The fittings for the front fenders are mounted – first on the fenders (see picture 4H) and hereafter on the box (see picture 4I).



- 2 pc. fittings for the front fenders
- 2 pc. small allen key bolts
- 2 pc. small washers
- 2 pc. small lock nuts
- 4 pc. semi-long allen key bolts with female thread
- 4 pc. allen key bolts with male thread
- 4 pc. washers for bolts with female tread
- 4 pc. washers for bolts with male tread



Picture 4H



Picture 4I

- The child seats and belts are mounted – see picture 4J and 4K.



- 2 pc. child seats
- 12 pc. short allen key bolts with female thread
- 12 pc. allen key bolts with male thread
- 12 pc. washers for bolts with female tread
- 12 pc. washers for bolts with male tread



- 4 pc. belts
- 8 pc. short allen key bolts with female thread
- 8 pc. allen key bolts with male thread
- 8 pc. washers for bolts with female tread
- 8 pc. washers for bolts with male tread



Picture 4J

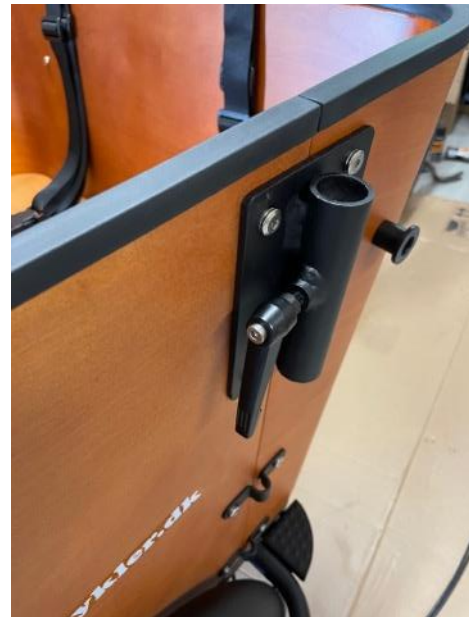


Picture 4K

- The handles for the handle bar and canopy holders are mounted on the inside and the outside of the box - see picture 4L and 4M.



Picture 4L



Picture 4M

Step 5: Mounting of the rest of the equipment

- The pedals are mounted – see picture 5A.



Picture 5A

- The saddle is mounted – see picture 5B and 5C.



Picture 5B



Picture 5C

Amcargobikes

Cargo bike enthusiast since 1992

- The handle bar is mounted. The gearshift should be placed on the right side of the handle bar and the two break handles on the left and right side respectively – see picture 5D and 5E.
- Hereafter the cables for the display and the breaks are pulled through the handle bar from below the bike. The same is done with the hydraulic break cables (back break cable through the right side and all other through the left side). See picture 5F, 5G, 5H and 5I.



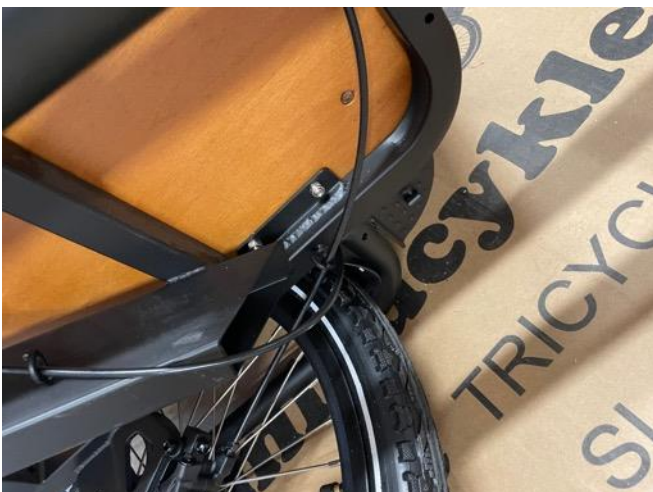
Picture 5D



Picture 5E



Picture 5F



Picture 5G



Picture 5H



Picture 5I

- The hydraulic break cables are mounted in the break handles. First, the plug is removed from the break handle (picture 5J). Then, the end of the break cable is broken off (picture 5K)



Picture 5J



Picture 5K

Amcargobikes

Cargo bike enthusiast since 1992

- The cuff, the black thread-bolt and the locking ring are pulled over the break cable (picture 5L) and this is mounted in the break handle (picture 5M). This is tightened with a 8 mm wrench (picture 5N) and the cuff is pushed in place (picture 5O).
- This exercise is repeated for the other break handle.



Picture 5L



Picture 5M



Picture 5N



Picture 5O

- The display is mounted (see picture 5P)



Picture 5P

Amcargobikes

- The bell and the front light is mounted (picture 5Q and 5R) *Cargo bike enthusiast since 1992*

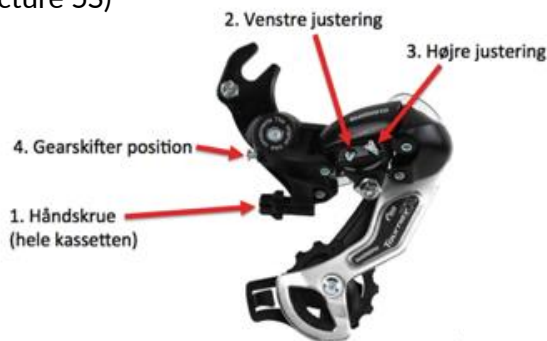


Picture 5Q



Picture 5R

- The gear is tested. If the gear "clicks" or you experience difficulties in changing gear, you can adjust the gear by using the small black "hand-screw" where the gear cable is mounted on the gear shift (picture 5S)



Picture 5S

IMPORTANT:

- The frame number is stamped into the crackcase on the left side of the bike.
- Remember to adjust and re-tighten all moving parts on the bike after some weeks of use. If re-tightening of the spokes are needed, please use a spoke tightener.
- See our "Let us help" guides on <http://www.amcargobikes.co.uk/>

ENJOY YOUR NEW CARGO BIKE!

