



# PATIO UMBRELLA

Owner's Manual

FOLLOW US:



A COMPLETE GUIDE

## **Thank you for purchasing a Sundale Outdoor product**

We hope you are and will continue to be pleased with both the product and service you receive. If not, please give us the award-winning customer service team an opportunity to improve your experience right away!

If you receive damaged or defective products please email them to us with details for return or replacement. Our service team will respond with in 24 hours.

If you don't like or want the product, please email us to request a return and for instructions.

Please kindly understand that returned freight must be paid by you if the products are not damaged or defective.

## **ATTENTION CUSTOMER**

Please don't return this unit to the store without first contacting customer service using our customer service number: (626) 899-5788 or Email us at: [service@sundaleoutdoor.COM](mailto:service@sundaleoutdoor.COM). By contacting us, you may obtain any information and/or parts assistance that you may require. Please have your model number available when your call or email for service.

Thank You!

---

## CONTENTS

---

<b>GETTING STARTED</b> .....	5
Important Safety Instructions.....	5
Unpacking Your Carton and Initial Setup.....	6
Product Care.....	7
<b>HOW TO</b> .....	8
TILT USAGE INSTRUCTIONS.....	8
ASSEMBLING THE MARKET UMBRELLA.....	9
ADJUSTING THE TILT.....	10
Install the LED Panel.....	11
Assemble the Offset Umbrella.....	12
<b>REVIEW</b> .....	15

---

## IMPORTANT SAFETY INSTRUCTIONS

---

### READ ALL INSTRUCTIONS BEFORE SETTING UP THE UMBRELLA



Do not use around children under the age of 5.



Check before each and every use to ensure all parts and materials are in good condition.



Keep away from fire sources including candles, fire pits, grills and any product with an open or closed flame or heat source.



If the tilt button comes out or the tilt function stops working take down the umbrella and contact us for a replacement.



Do not leave the umbrella open in heavy winds or while not in use.



Use caution when operating the tilt button so as not to pinch fingers.



If the umbrella should break in any way, do not attempt to repair. Contact us immediately for a replacement.



Check the umbrella for stability after set up.

---

## UNPACKING THE CARTON AND INITIAL SETUP

---



- If you purchased an LED umbrella, the solar panel is enclosed in a bubble bag/Air cushion inside the carton. Do not dispose of the carton until checking for the panel.
- Do not use a sharp instrument to cut the carton open as you risk damaging the solar panel and/or canopy fabric.
- Ensure all parts are included in the carton.
- When setting up the umbrella after storing for the season or for the first time, allow to stand for 24 hours to make sure all parts are functioning correctly and the umbrella is stable.

---

## PRODUCT CARE

---

### Umbrella Fabric

- If the umbrella becomes wet, make sure to leave it open to dry completely before closing.
- Spot clean fabric with mild soap and warm water using a sponge or soft bristled brush. Rinse completely and allow to air dry.
- An umbrella cover should be used whenever the umbrella is not in use to prevent sun damage.

### Metal Finish

- If the umbrella is in a salt air environment or indoor pool area, the finish may be compromised by the accumulation of salt and chlorides. Regularly clean the finished areas with a mild soap and warm water using a soft bristled brush.

### Wood Finish

- Scratches are likely to occur on the wooden pole after consistent use. Touch up these areas with a matching wood stain then cover with marine varnish.

### Storage

- Make sure the umbrella is completely dry before storing for the season.
- Fold the top neatly to avoid wrinkling and ideally use an umbrella cover.
- Lay flat on a hard surface in a cool, dry location.
- To keep the umbrella operating smoothly, we recommend occasional treatment of moving parts with a silicon lubricant spray.

AVOID GETTING THE SPRAY ON FABRIC OR FINISH.

## TILT USAGE INTRUCTIONS



Press the button and tilt slightly



Release the button and tilt more



The button will automatically spring back and lock



Press the button and tilt slightly



Keep pressing the button and tilt



Button will not be able to spring back

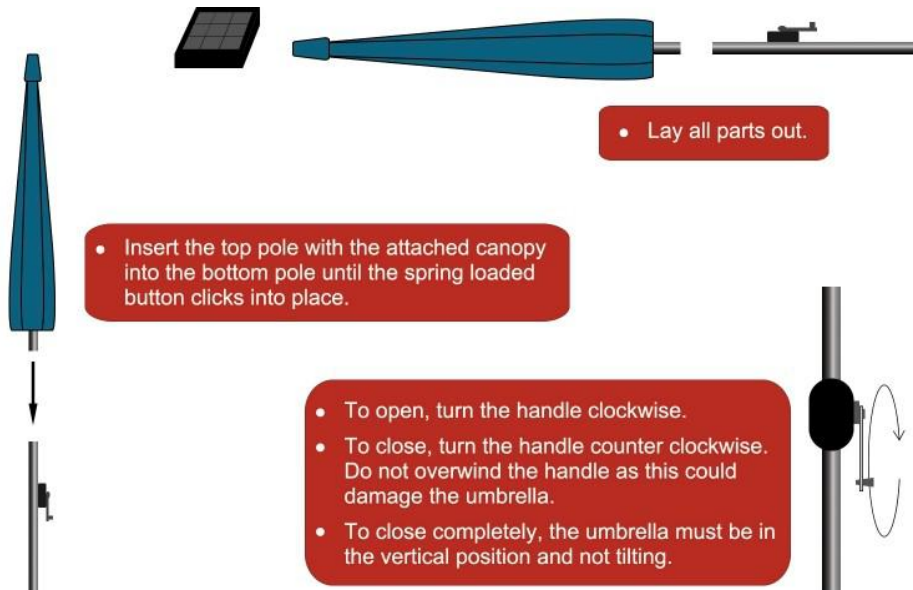


LED line

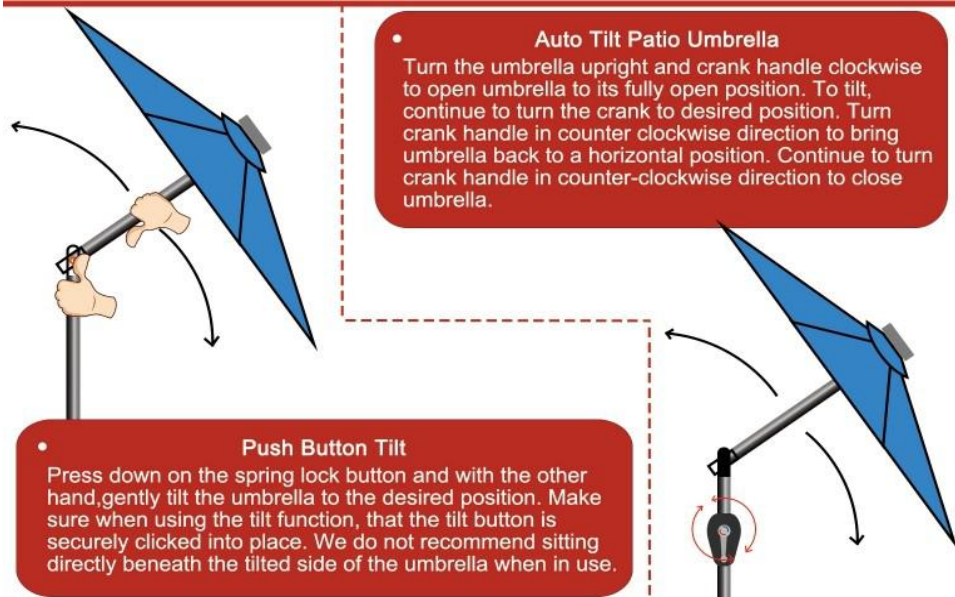


LED line may be broken causing the item not to light

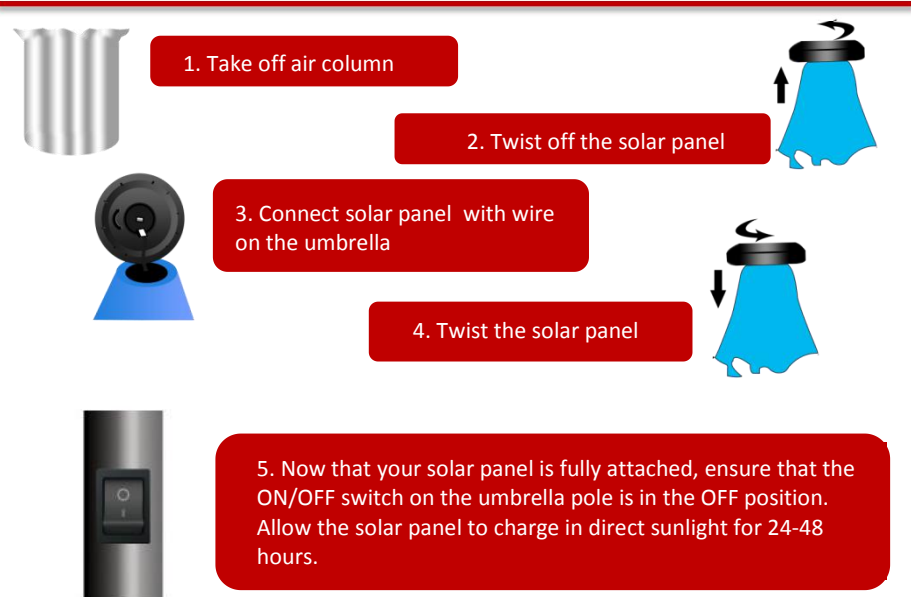
## ASSEMBLING THE MARKET UMBRELLA



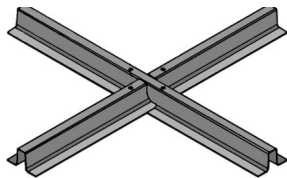
## ADJUSTING THE TILT



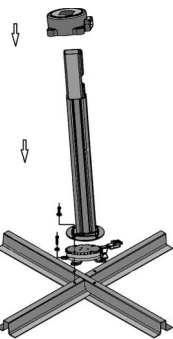
## INSTALLING THE LED PANEL



## ASSEMBLING THE OFFSET UMBRELLA

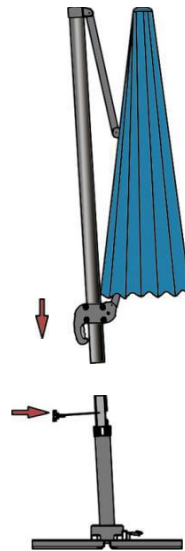


- Place lower cross leg on the ground, line up notches and place upper cross leg over the lower cross leg.



- Attach the holder pole to the base by using the bolts and washers. Hand tighten only. Adjust the holder pole to be sure it is positioned correctly on the base. Finally tighten all bolts. Be careful not to over tighten.

## ASSEMBLING THE OFFSET UMBRELLA



- **Insert Umbrella Frame with canopy into the Holder Pole.** Slide the holder pole collar onto the holder pole at the same time. Tighten the two Hex Bolts into the holder pole to secure the umbrella

---

## ASSEMBLING THE OFFSET UMBRELLA

---



- To open the umbrella, squeeze the Glide Handle and grip together and slide up or down the pole to achieve the desired tilting angle. Release the grip to lock into place. To open the canopy, turn the crank handle clockwise until the canopy is fully open as pictured.

## We'd love to hear from you!

Once you've had a chance to use your product and raise any questions to our friendly team, we invite you to post a Product Review so that others can benefit from your experience. As a growing business, we know exactly how valuable the time is, so we truly appreciate your time and generosity.

Warm Regards,  
Sundale Outdoor Customer Support  
E-mail: [service@sundaleoutdoor.com](mailto:service@sundaleoutdoor.com)  
Web: [www.sundaleoutdoor.com](http://www.sundaleoutdoor.com)





More **C**olors, More **S**izes, More **S**tyles, Better **Q**uality



STAY CONNECTED!



visit: [www.sundaleoutdoor.com](http://www.sundaleoutdoor.com)