



# AUTOMATIC DOSING SYSTEM

**Accurately and  
consistently adds  
your choice of  
water treatment**

- For Ponds  
(Item #96030)
- For Fountains  
(Item #96031)





# AUTOMATIC DOSING SYSTEM

## Thank you for choosing the Aquascape Automatic Dosing System.

At Aquascape our goal is to supply our customers with the best valued products in water gardening. We hope you enjoy your purchase. Thank you for choosing Aquascape. *Your Paradise. Our Passion.*<sup>®</sup>



The Aquascape Automatic Dosing System, when used in conjunction with the Aquascape Automatic Dosing System water treatments, provides pond and water feature owners with optimum water conditions and crystal-clear water. The Aquascape Automatic Dosing System was designed to take the guesswork and mundane chore out of adding water treatments to your pond or fountain on a regular basis. Adding water treatments consistently and often ensures pristine water quality and optimizes water conditions. This instruction manual will guide you through your installation of the Automatic Dosing System as well as recommended maintenance procedures to ensure long-term effectiveness.

### Table of Contents

Introduction .....	2
Contents .....	3
Safety Information .....	3
Instructions .....	4
System Installation Options .....	6
Discharge Options .....	6
Available Water Treatments .....	7
Maintenance .....	9
Troubleshooting.....	9
Replacement parts .....	9
Warranty.....	10

### Contact Us

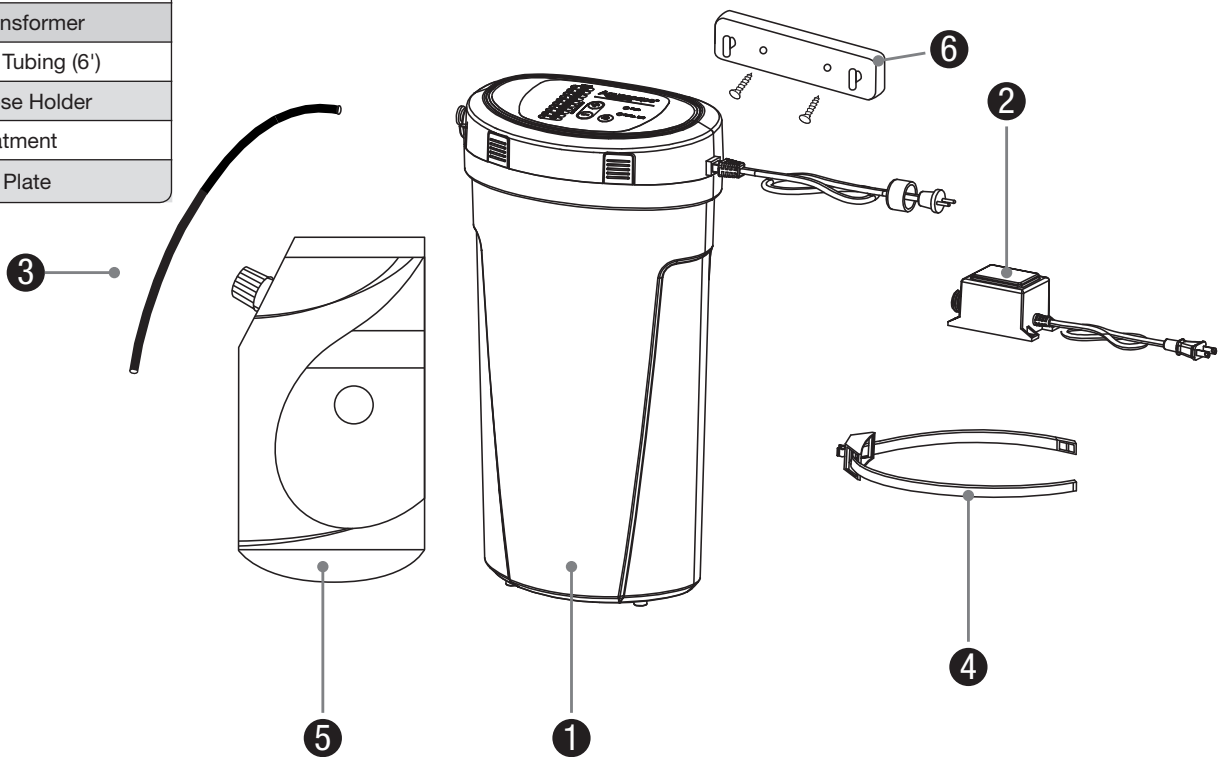
For more information about our company or products, please visit our website at [www.aquascapeinc.com](http://www.aquascapeinc.com) or call (US) 1-866-877-6637 (CAN) 1-866-766-3426.

### Find us on:



[www.facebook.com/AquascapeInc](http://www.facebook.com/AquascapeInc)  
[www.youtube.com/aquascape4](http://www.youtube.com/aquascape4)  
[www.twitter.com/AquascapeInc](http://www.twitter.com/AquascapeInc)  
[www.flipboard.com/profile/AquascapeInc](http://www.flipboard.com/profile/AquascapeInc)

Contents	
No.	Description
1.	(1) Automatic Dosing System
2.	(1) 6-Watt Transformer
3.	(1) Discharge Tubing (6')
4.	(1) Output Hose Holder
5.	(1) Water Treatment
6.	(1) Mounting Plate



## Safety Information



**WARNING:** Risk of electric shock – This product has not been approved for use in swimming pool or marine areas.



**WARNING:** To provide continued protection against risk of electric shock, connect to properly grounded, ground fault circuit interrupter (GFCI) outlets only.



**PLEASE NOTE:** Aquascape Automatic Dosing System water treatments have been specifically formulated to work with the Aquascape Automatic Dosing System. Using water treatments not designed for use with the system may permanently damage the unit and void the warranty.



**WARNING:** This product is weatherproof but is not designed to be submersed in the water or operated at ambient temperatures below 40°F/4°C.

- Have a qualified electrician install a properly grounded receptacle outlet, acceptable for outdoor use when protected from direct sunlight, snow and rain. If possible, locate the outlet or filter so that the power cord will reach the outlet without an extension cord.
- Inspect cord for damage before using.  
If an extension cord is required, be sure it is rated for outdoor use.
- Any wiring of this product should be performed by a qualified electrician to ensure code compliance and user safety.
- To reduce risk of electrical shock, all wiring and junction connections should be made per local codes. Requirements may vary depending on usage and location.
- The power cable should be protected at all times to avoid punctures, nicks or abrasions.
- Never handle power cords with wet hands.
- Unplug system at receptacle outlet when not in use.
- Do not remove cord and strain relief. Do not connect conduit to product.
- Do not use power cable to lift the Automatic Dosing System.



## Electrical Specifications

### Automatic Dosing System

- Input Voltage: 12V AC
  - Input frequency: 50 Hz
  - Input Watage: 2.5W (max)
  - For outdoor or indoor use
  - Thermally protected
- This system has been evaluated for use with the Aquascape Automatic Dosing System Water Treatments only.

### Transformer

- Input Voltage: 240V AC
- Input frequency: 50 Hz
- 6-Watts
- For outdoor or indoor use
- Thermally protected

## IMPORTANT SAFETY INSTRUCTIONS

When installing and using this electrical equipment, basic safety precautions should always be followed, including the following:

### 1. READ AND FOLLOW ALL INSTRUCTIONS.

2. **WARNING** - To reduce the risk of injury, do not permit children to use this product unless they are closely supervised at all times.

3. **DANGER** - Risk of Injury.

- Replace damaged cord immediately.
- Do not bury cord.
- Connect to a grounded, grounding type receptacle only.

### 4. SAVE THESE INSTRUCTIONS.

## Instructions

Carefully remove the contents of your dosing system from the packaging.

1. Attach the transformer to the dosing system power cord using the quick-connect fitting attached to the system's main power cord. Please note: the transformer should be plugged into a GFCI rated receptacle. The transformer included is 12V. The unit can also be powered by an existing 12V transformer used for 12V lighting.
2. Open the dosing system by pressing the four blue tabs simultaneously on the control panel while gently lifting upward.



3. Attach the water treatment pouch by first removing the existing water treatment cap. Then, insert the clear inner tubing into the water treatment and seal the connection using the threaded cap attached to the inner tubing. Finish the pouch installation by connecting the other end of the inner tube to the connection at the bottom of the control panel.



4. Place the attached treatment inside the canister. Then, place the control panel back onto the canister.



5. Attach the included discharge tubing to the fitting on the side of the control panel. Simply insert the tubing into the fitting until it stops. The discharge tubing can either be installed directly into the pond or fountain or installed using the included output hose holder. The output hose holder can be easily attached to plumbing or other round surfaces. Refer to the installation diagrams on the following page for more information.

**Note:** Install the system as close to the water feature as possible to minimize the distance your water treatment needs to travel.



6. Using the plus or minus buttons on the top of the control panel, select the proper amount of gallons to be maintained. If you are treating a fountain or small water feature with less than 500 gallons, we recommend using the 500 gallon setting. If the fountain or water feature contains more than 500 gallons of water capacity, increase the setting to the proper gallonage.



**To Calculate Pond Size in US Gallons:**

Length (in feet) x Width (in feet) x Average Depth (in feet) x 7.48



**TIP:** For new or problem ponds and fountains, we recommend using the X2 button for the first two weeks of operation.

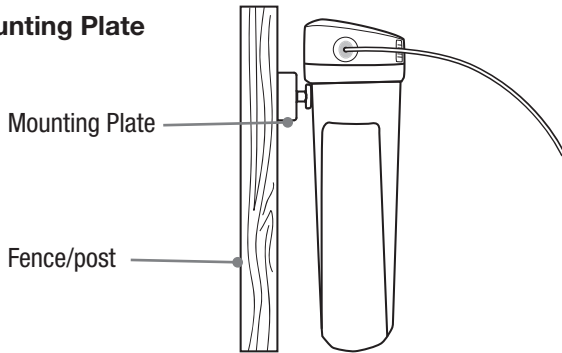
7. Priming Mode - When first setting up the system or when adding a new water treatment pouch, the system will need to be primed in order to push the water treatment through the length of output tubing. To enter the priming mode, hold the x2 button for 3 seconds until the LED indicator light begins to flash. The system will begin to slowly prime itself at this time. The priming mode will automatically turn off after approximately ten minutes, returning to normal operation. The priming mode can be exited at any time by pressing the x2 button while the unit is priming.



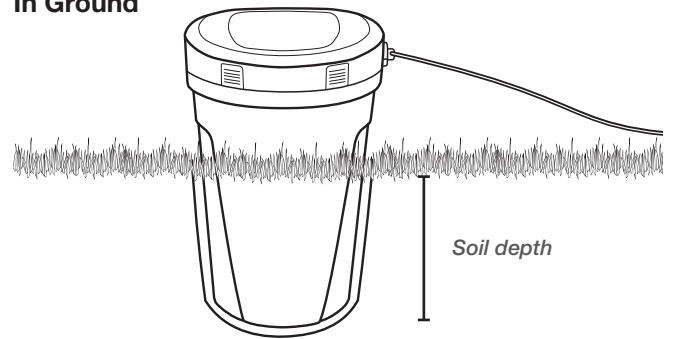
8. Be sure to inspect your dosing system often to verify that the treatment pouch is not empty and ensure proper functionality of the system. Use the chart on page 8 of this manual to approximate how often you will need to replace your selected water treatment.

## System Installation Options

### Mounting Plate



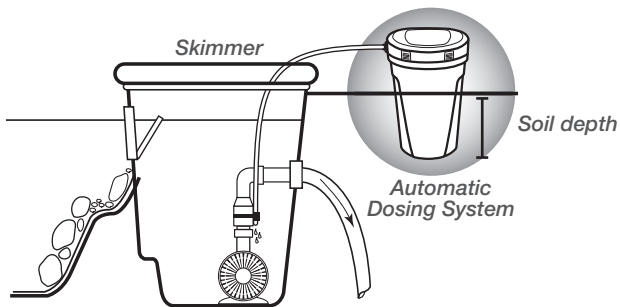
### In Ground



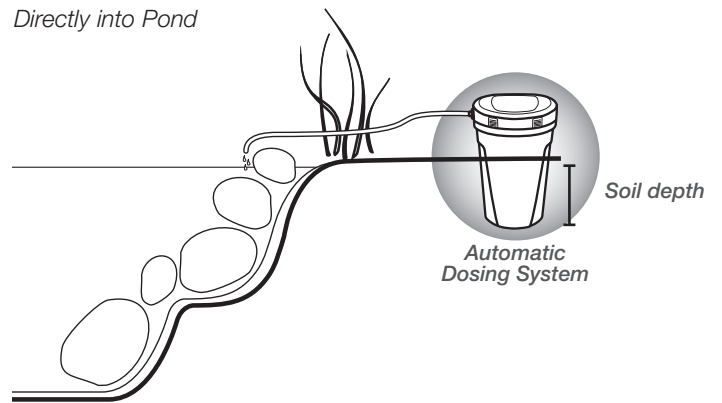
## Discharge Options

### Automatic Dosing System for Ponds Application

*Directly into Skimmer*

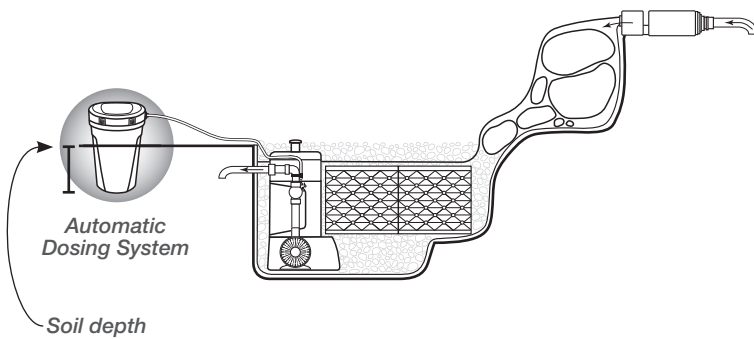


*Directly into Pond*

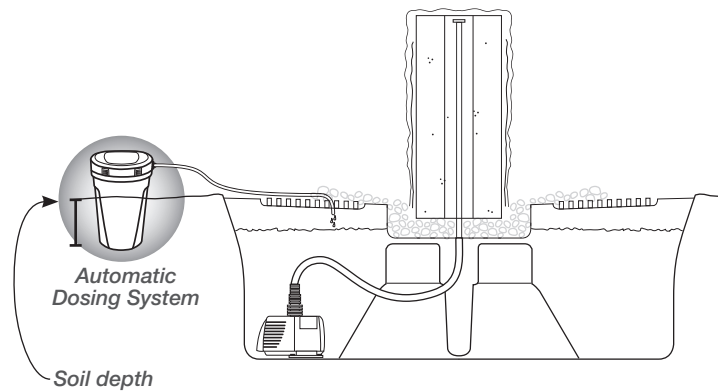


### Automatic Dosing System for Fountains Application

*Directly into a Waterfall Vault*



*Directly into a decorative water feature basin*



## Available Fountain Water Treatments



### *Prevent for Fountains*

#96042

Aquascape Prevent for Fountains, when used in conjunction with the Aquascape Automatic Dosing System, prevents undesired water conditions, including the buildup of unsightly debris and scale.



### *Clean for Fountains*

#96037

Aquascape Clean for Fountains will quickly and effectively clean debris from the surface of the feature, restoring the natural beauty of your water feature.

Water Treatment	1 Prevent	2 Clean
Eliminates unsightly water conditions	✓ ✓	✓ ✓
Eliminates discolored/cloudy water	✓	✓ ✓ ✓
Reduces floating debris and turbidity	✓	✓ ✓
Eliminates unsightly scale deposits	✓ ✓ ✓	✓ ✓ ✓
Prevents unsightly scale deposits	✓ ✓ ✓	✓ ✓
Reduces maintenance	✓ ✓	✓ ✓ ✓
Safe for animals that may drink from the feature	✓ ✓ ✓	✓ ✓ ✓
Eliminates bad odors	✓ ✓	✓ ✓ ✓

Key		
✓ Good	✓ ✓ Better	✓ ✓ ✓ Best

## Available Pond Water Treatments



### 1 **Maintain for Ponds**

#96032

Aquascape Maintain for Ponds uses a combination of beneficial bacteria and enzymes to reduce pond maintenance and maintain optimum water quality, allowing you to spend more time enjoying your pond.



### 4 **Protect for Ponds**

#96035

Aquascape Protect for Ponds is made from natural plant extracts chosen for their natural healing properties to reduce fish stress while preventing parasites and bacterial infections.



### 2 **Clean for Ponds**

#96034

Aquascape Clean for Ponds contains a powerful combination of sludge eating bacteria and enzymes which reduces organic waste caused by fish waste, uneaten fish food, leaves and debris that fall into the pond. Reducing organic debris helps to optimize water clarity and quality.



### 3 **Clear for Ponds**

#96033

Controlling the buildup of debris and unsightly water conditions can be difficult. Aquascape Clear, when used with the Automatic Dosing System, can be dosed slowly and consistently, reducing issues caused when shock treating the pond, resulting in a clean, clear and maintenance free pond.

Replacement Frequency	
Pond size	Approximate days of treatment
500 gallons	166
1,000 gallons	83
1,500 gallons	55
2,000 gallons	42
2,500 gallons	33
3,000 gallons	28
3,500 gallons	24
4,000 gallons	21
4,500 gallons	18
5,000 gallons	16

Water Treatment	1 Maintain	2 Clean	3 Clear	4 Protect
Eliminates unsightly water conditions	✓✓	✓✓	✓✓	
Eliminates discolored/cloudy water	✓✓✓	✓	✓✓	
Reduces floating debris and turbidity	✓	✓✓	✓✓✓	
Contains a powerful blend of bacteria and enzymes	✓✓✓	✓✓✓		
Reduces Issues with fish loss or fish exhibiting strange behavior	✓			✓✓✓
Reduces sludge in streams and pond bottom	✓✓	✓✓✓	✓	
Removes and detoxifies chlorine, chloramines, heavy metals and ammonia	✓✓✓			
Safe for animals that may drink from the pond	✓✓✓	✓✓✓	✓✓✓	✓✓✓
Supports the biological balance/pond ecosystem	✓✓✓	✓✓		
Eliminates bad odors	✓✓	✓✓✓		
Helps eliminate foam near waterfalls and in streams	✓✓	✓✓✓	✓✓	✓



## Maintenance

The Aquascape Automatic Dosing System requires minimal maintenance. When replacing water treatments, take a few seconds to inspect and clean the tubing of any debris that has formed or become trapped in the tubing. A soft pipe cleaner, available at most hobby stores, can be used to clean the tubing.

The pump cartridge, located on the underside of the control panel, is a consumable part that may wear over time, reducing the accuracy of the system. It is recommended to replace the pump cartridge once each year (Pump Cartridge Kit Item# 96040). Please see replacement parts for more information.

Do not operate at temperatures below 40°F / 4°C as doing so will void the warranty.



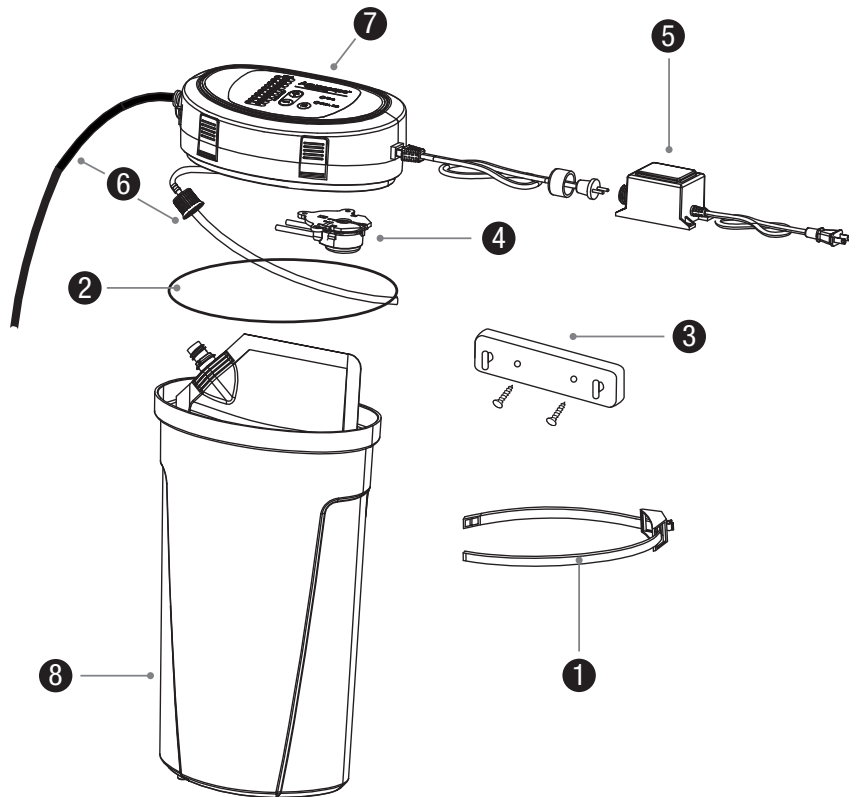
Your Aquascape Automatic Dosing System and liquid water treatments are not designed to be operated during freezing temperatures. The unit is equipped with an internal protection thermostat that will shut off the dosing pump at temperatures below 40°F / 4°C. Remove the dosing system during winter freezing temperatures and store it in a frost free location.

## Troubleshooting

- **The pump does not seem to be pumping the liquid treatment from the pouch into my pond or fountain.**
  - Make sure the unit is getting power.
  - Make sure the inner tubing and discharge tubing are properly connected and not kinked.
  - Make sure the system is primed. To enter the priming mode, hold the x2 dosing button for 3 seconds (this may take several minutes). Refer to page 5 for more information.
  - Listen closely, as you should be able to hear the pump turning if it's working correctly.
  - If problems persist, it may be time to replace the pump cartridge.
- **There is no power reaching the unit.**
  - Check that the transformer is plugged in.
  - Try replacing the transformer; please note that the Aquascape Automatic Dosing System uses a 12V low voltage outdoor rated transformer.

## Replacement Parts

Automatic Dosing System Replacement Parts	
No.	Item number/description
1.	96043 - Output Hose Holder
2.	96044 - O-Ring
3.	96047 - Mounting Plate
4.	96040 - Pump Cartridge Kit
5.	98375 - 6-Watt Transformer
6.	96041 - Tubing Kit
7.	96054 - Control Panel Kit (includes control panel, inner tubing and discharge tubing).
8.	96045 - Canister



## Warranty

### 1 Year Warranty

The Aquascape Automatic Dosing System is guaranteed for one year from the date of purchase. Proof of purchase required. Warranty does not cover damage resulting from negligent handling, misuse or lack of reasonable maintenance or care. Warranty is valid against defects due to material and workmanship only.

The sole obligation shall be to replace the defective unit with a suitable replacement unit. Units should be checked for proper operation prior to returning as defective. No liability for loss or damage of any nature or kind, whether arising out of or from the use of the product, whether defective or not defective, is assumed by Aquascape, Inc. or its affiliates. The warranty does not cover the pump cartridge as this is considered a consumable part. Please see our Maintenance Section for care instructions.

For more information about our company or products, please visit our website at [www.aquascapeinc.com](http://www.aquascapeinc.com)  
or call us at (US) 1-866-877-6637 (CAN) 1-866-766-3426