

# IDEAL 1080

max.

4

mm

← 80 cm →

**Professional trimmer with 800 mm cutting length, optionally available with obtuse angled universal blade or with pointed paper blade. Comes with stand and foot pedal clamping.**

Resharpenable blade set made of "Solingen steel"

Optionally available with obtuse angled (75°) universal blade or with pointed (25°) paper blade

Complete with stand and foot pedal clamping

Fold-away extension table

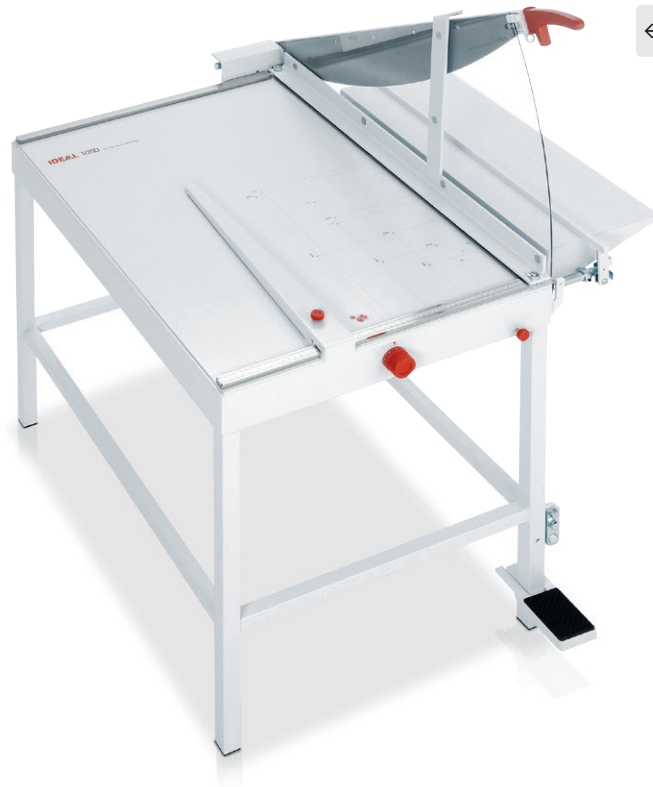
Solid all-metal construction

Front gauge with integrated narrow strip cutting device

Stationary safety guard made from transparent, unbreakable plastic material

Precision side lay with measuring scale and adjustable backgauge.

Format indications printed on the table



## Technical specifications

<b>Cutting length</b>	800 mm
<b>Cutting capacity</b>	max. 4 mm cutting height or approx. 20 sheets*
<b>Table size</b>	W 605 x D 800 mm
<b>Format indications</b>	A3 - A6 + letter, legal, ledger size
<b>Dimensions</b>	H 1215 x W 670 x D 1080 mm Width with side table in working position: 890 mm
<b>Weight</b>	55 kg

\* paper 70 g/m<sup>2</sup>

## Product characteristics

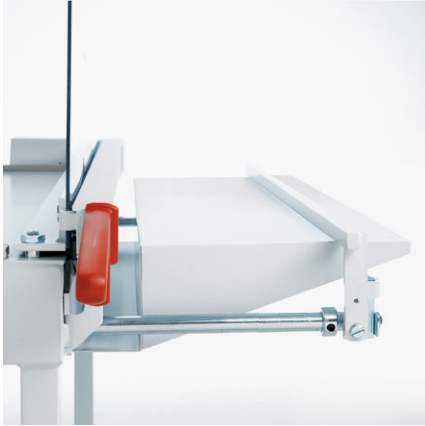
The trimmer is optionally available with obtuse angled (75°) universal blade – cuts paper, cardboard and also heavier materials such as thin metal plates, foils, balsa wood, linoleum...(with up to 4 mm cutting height) or with pointed (25°) paper blade (cuts up to approx. 20 sheets of paper, 70 g/m<sup>2</sup>). Resharpenable, high-quality blade set made of "Solingen steel". Standard equipment includes a sturdy stand with integrated foot pedal clamping system. Fold-away extension table (on the right side). Side lay with measuring scale in mm/inches. Backgauge and front gauge (the latter with integrated narrow strip cutting device for cutting of small strips). The front gauge is adjustable via a rotary knob with fine adjustment scale. Standard paper sizes from A6 to A3, American sizes (letter, legal, ledger size) and various angle indications printed on the table. Stationary blade guard made from transparent, unbreakable plastic material and blade locking device. Solid cast aluminium blade mounting bracket and sturdy blade axle with double bearing for precise cuts. Most solid metal construction. Quality product "Made in Germany". Safety tested by independent safety labs.

# IDEAL

WWW.IDEAL.DE

# IDEAL 1080

## Features



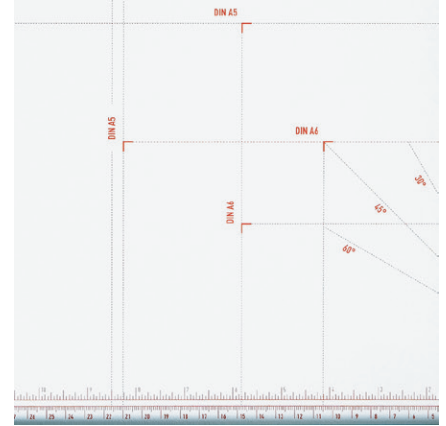
### FRONT GAUGE AND SIDE TABLE

The front gauge with integrated narrow strip cutting device is positioned via a calibrated rotary knob. A fold-away extension table supports the material to be cut, especially useful when trimming large formats.



### FOOT PEDAL CLAMPING

The most effective foot pedal clamping system of this model is integrated into the stand.



### FORMAT INDICATIONS

For efficient and easy cutting: Standard paper sizes from A6 to A3, American sizes (letter, legal, ledger size) and various angle indications printed on the table.



### SOLID BLADE MOUNTING BRACKET

Sturdy design: Cast aluminium blade mounting bracket with double pivot bearings for the blade axle guarantees highly accurate rectangular cuts.



### BLADE LOCKING DEVICE

Safety first: The blade locking device is especially useful to prevent unauthorised use of the trimmer.



### SAFETY GUARD

The stationary blade guard made from transparent, unbreakable plastic material allows undisturbed sight on the complete cutting line.



# IDEAL