

goodnature®

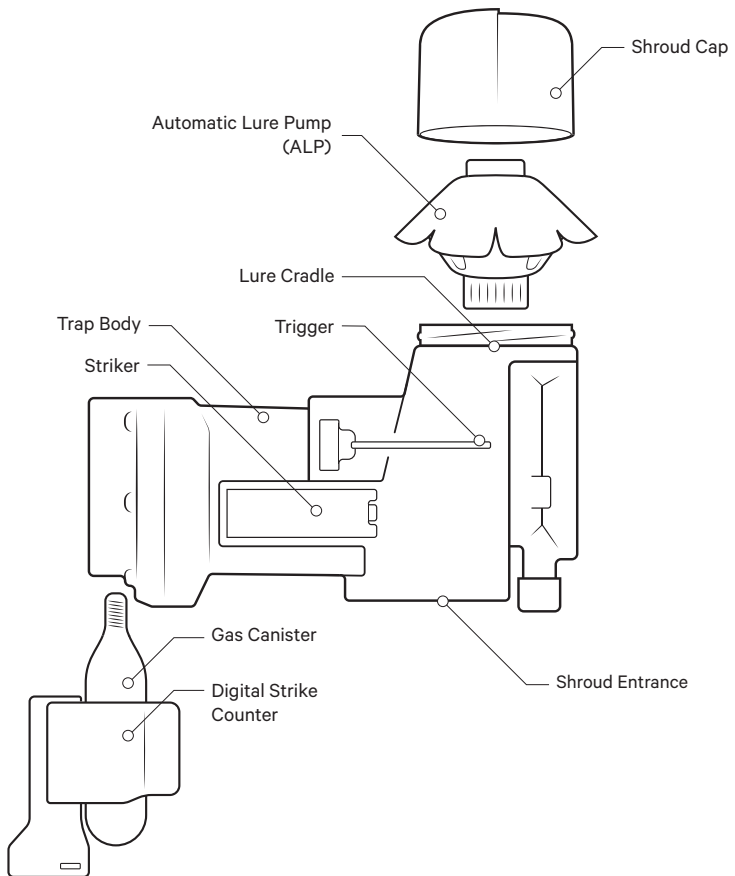


A24 Trap Box

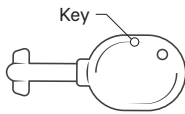
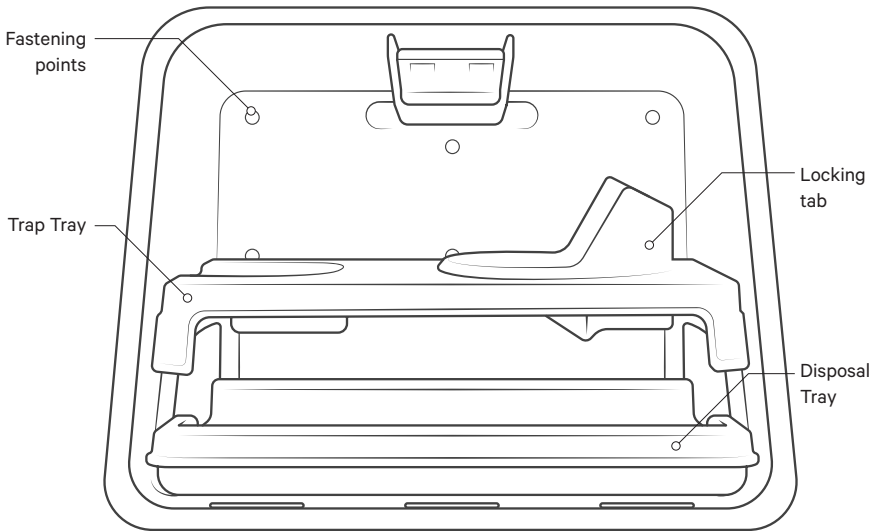
Quick Start Guide

goodnaturetrapping.com

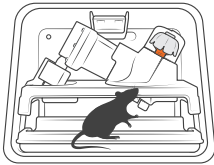
Your Trap - A24



Trap Box



How it works



1. Sniff sniff

Targeted long life lure attracts rodents into the trap.



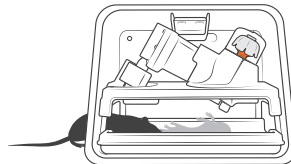
2. Kapow!

Rodent moves the trigger to get to the lure, firing the trap.



3. Auto-reset

The trap clears and resets immediately after an A-Class humane kill.



4. Sniff sniff...

The long life lure continues to attract rodents for constant control.

Doing things differently is in our nature

We started Goodnature for good reason: to see endangered wildlife in New Zealand and around the world flourish again. This means getting on top of a bunch of pests - rats and mice for starters. We also want to go about it kindly, without using nasty toxins.

That's why we develop humane traps that automatically reset and are easy and safe to use in living spaces through to wild places. Not only have we created a world-first, we started a revolution.

Big thanks for joining us. Happy trapping!

Your constant control system

Congratulations! You're now the owner of the world's most advanced pest control technology. Goodnature's self-resetting trapping system gives you constant control against pest reinvasion. Powered using compressed CO₂ gas, Goodnature technology combines design engineering principles and animal behavioural science with the highest manufacturing standards to deliver a trap that will kill 24 times per Gas Canister. Our Trigger and Strike mechanism gives the Goodnature A24 its certified A-Class humane status.

Our lures are developed to be long life to minimise maintenance effort and maximise freshness to remain

highly attractive to pests. As our lures are toxin-free there is no risk of secondary poisoning to wildlife, pets, or livestock and can be safely used in public spaces like parks, schools, hospitals, restaurants etc.

Contained in our Trap Box, you can control rodents anywhere with the A24 - parks, commercial and residential sites and know the trap is secure and dead pests won't be visible. The box is designed to hold three large rats before it needs emptying.

Trap safely

We've designed our traps to target specific pests only. To avoid injuring or killing protected wildlife or any other animal that's good for nature, it's important you follow the installation instructions and our safety advice to set up your trap correctly. And remember, it's your responsibility to ensure you comply with all relevant local regulations and laws.

We're here to help

This Quick Start Guide has been developed to help you get the best results from your A24 Trap and Trap Box. If you have any questions or need any tips, we're here to help - visit goodnaturetrapping.com to find your nearest Goodnature support team.

Getting the most out of the A24 Trap Box

Trapping tips

- **Choose locations that are sheltered and shaded.**

This keeps the temperature in the box low, as well as being places where rodents are likely to feel safe eating.

- **Always install the Trap Box in an upright position.**

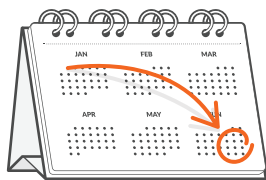
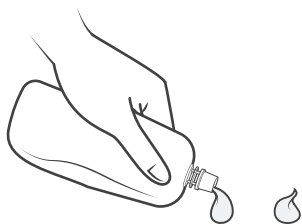
Make sure the Trap Box is upright, parallel and fixed securely to the wall. The trapping system will not work if lying flat.

- **Secure or remove any competing food sources.**

This improves trapping success by reducing food sources outside of the trap.

- **Pre-feed the area around your trap.**

This increases availability of the lure inside the trap, and helps combat any competing food sources nearby.



Pre-feeding increases success

Our testing shows it can take rats 6-8 weeks to get used to a new trap in their environment, and for you to see the best results from your new trap.

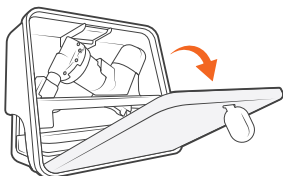
We recommend pre-feeding the area around your trap with our lure, to increase the availability of the new food source in the trap and increase trapping success. Simply use a pouch of our non-toxic lure and place around a dozen pea sized dollops to the area 10 m / 20 ft around the trap.

Find the right timing to replace the lure for your sites

If you're trapping in hot climates you may need to replace the lure more regularly.

Our Automatic Lure Pump dispenses fresh, toxin-free lure for up to six months. The fresher the lure, the easier it is to catch a passing rat, so if you're planning or managing an intensive trapping project, have a serious rat infestation to control or are working in hot climates, we recommend changing the lure every four months. You'll soon learn what works best for each site.

Installing your trap

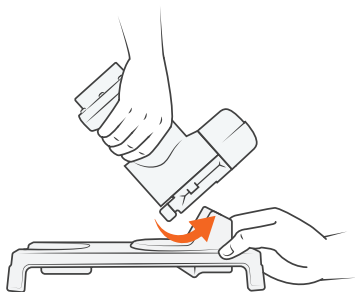


1. Prepare your Trap Box

Once you've located the right spot for your Trap Box, use the key to open the door, remove the trap and all parts from the box and set aside.

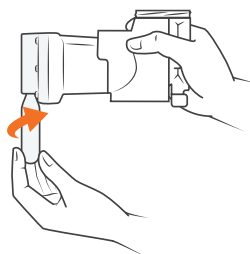
2. Secure your Trap Box

The Trap Box must be secured upright, as pictured. We recommend using a minimum of 4 fasteners spaced as far apart as possible - Use the dimples on the inside back face of the box as a guide. Self drilling screws or bolts with flanged heads should be used.



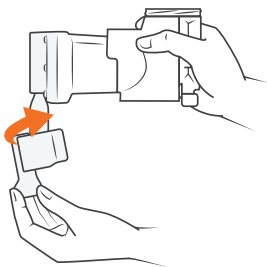
3. Remove the Trap from its Tray

On a flat surface, hold the tray down firmly with one hand and pull the trap body up with the other. The trap will slide out from the tray.



4. Power up your Trap

Remove the black cap from the gas canister. Be careful to keep the screw thread clean and free of debris. Screw the canister firmly into the trap - hand tighten only. As it screws in you may hear the trap quietly hiss after the seal is broken. This is normal. **WARNING: the trap is now live. Keep your hands clear of the trap entrance.**



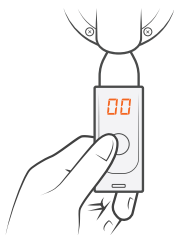
5.
Attach the Digital Strike Counter

Slightly wet the inside of the rubber strap for lubrication and rotate the Counter in the direction which tightens the Gas Canister (anti-clockwise). **To work, the Counter display MUST face directly away from the Trap as pictured.**



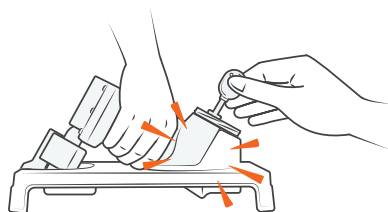
6.
Click the Trap back into the Tray

Tilt the Trap Body backwards slightly and lower it onto the top locking tab of the Tray. As you press downwards the Trap will be guided in toward the Tray and lock in with a click.



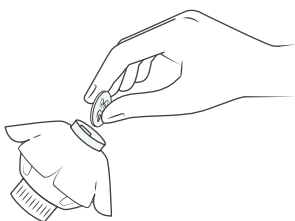
7.
Zeroing & checking the Counter

Zero the Counter by pressing the button and holding it down until the display shows '00'. The Counter goes to sleep a few seconds after the button is released. To check the tally on the Counter, quickly press and release the button.



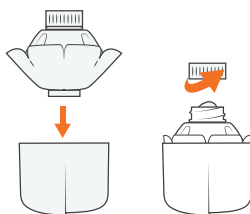
8.
Test-fire your Trap

To test fire the trap, **hold the Trap and Tray firmly on the ground**, using the key, reach it down through the top of the trap and push the Trigger gently to the side. The Striker will fire with a bang and then retract. **DO NOT** use a screwdriver or other metal tool as this can damage the trap. **WARNING: Keep your hands clear from the Trap as it fires with a BANG!**



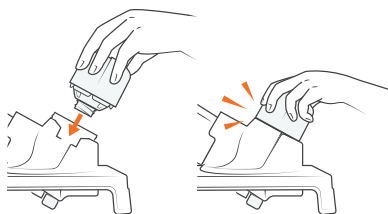
9. Activate the Automatic Lure Pump (ALP)

Remove the 10c coin from the top of the ALP. This activates the technology which will dispense lure for up to 6 months. **It is vital you remove the coin or the ALP will not activate.**



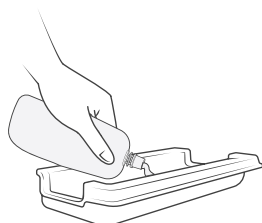
10. Nest ALP into the Shroud Cap

Gently shape the ALP into the Shroud Cap with the black screw cap still on. Push the ALP into the Shroud Cap, until its skirted edge sits aligned with the edge of the Shroud Cap rim. It will then easily screw into the Lure Cradle. Now remove the screw cap. A small amount of lure may be forced out, that's fine – there's still plenty of lure inside. Wipe this excess lure on the Disposal Tray.



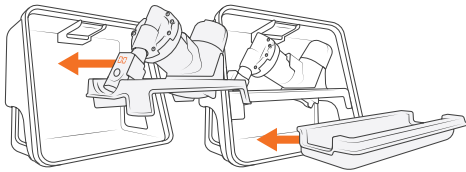
11. Screw & secure the Shroud Cap & ALP

Place the Shroud Cap with the ALP into the Lure Cradle and screw into the internal thread with a few turns. Once the ALP is screwed into the Lure Cradle, secure the Shroud Cap onto the trap by pushing down and clicking into place with another turn.



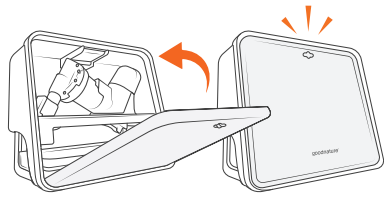
12. Pre-feed the Disposal Tray

Using the pouch of lure, squeeze out a dozen pea-sized dollops into the Disposal Tray and the area within 10 m / 20 ft from the trap. This enhances trapping success by increasing the availability of the new food source and attracting pests toward the trap.



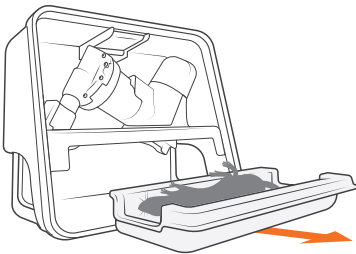
13. Load the Trap and Disposal Tray into the Box

Gently slide the Trap in its Tray into the box using the guides in the box. **The counter should be facing away from the trap as pictured.** Then place the Disposal Tray underneath the trap.



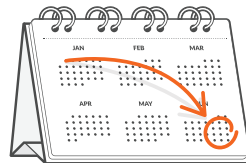
14. Close your Box

Remove the key from the door. Close the door, a loud click will tell you that the door is locked and secure. Your Trap Box is now set and ready to go!



15. Easy pest removal

As pests are killed they will be collected in the Disposal Tray. This tray can be easily removed to dispose of the pests without touching them. The Disposal Tray is designed to hold three large rats. We recommend using a damp cloth to wipe the trays if cleaning is necessary.



16. Replace the Gas & Lure every 4 - 6 months

Your Automatic Lure Pump will last for up to 6 months. If you're trapping in hot climates you may need to replace this on a four monthly cycle. Make a note of when you'll need to replace your lure. This keeps your lure fresh and attractive to pests. It's a good idea to replace your gas canister at the same time, so your trap is powered and ready for action.

Moving & storing your trap safely

Moving your trap safely

If you're targeting multiple rodent hotspots, we recommend installing additional traps. If you do need to move your trap to a new location, follow these steps to do it safely:

1. Take the Trap Tray out and set aside.
2. Remove the Trap Box from where it's currently installed
3. Move it to the new location and re-secure
4. Put the Trap Tray back in and close the box.

WARNING: the trap is still live. Keep your hands clear of the trap entrance.

Storing your trap safely

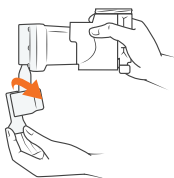
For constant control against pests, we recommend leaving your trap in place. If you plan to store your trap, it's important you de-gas it first.

1. Open the box and remove the Trap Tray.
2. Remove the Digital Strike Counter
3. Holding the gas canister with a cloth or gloves to protect your hands, unscrew the gas canister. You may hear any remaining gas in the canister escaping. This may cause the canister to freeze rapidly.
4. Re-attach Trap to the tray and test-fire to ensure any remaining strikes have been discharged.

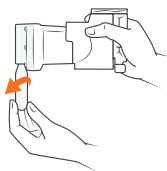
WARNING: Gas canisters can freeze quickly! Always have fabric between your hand and the gas canister when unscrewing them.



1.
Detach Trap



2.
Remove Counter



3.
Remove Gas Canister
*(Trap is still live)



4.
Remove final charge

*WARNING - Remove final charge from the trap

Although the gas canister has been removed, the trap may still be live with one charge remaining in its chamber. Safely test fire your trap by removing the Shroud Cap and the Automatic Lure Pump, and using the Trap Box Key, reach down through the top of the trap and push the Trigger to one side. If there is still gas in the trap, the orange Striker will be triggered, if nothing happens, all gas has been flushed out and the trap is safe to move.

Always treat the trap as live until you have de-gassed and test fired it. If the trap doesn't fire when triggered, the trap has successfully been de-gassed.

With the trap de-gassed, your trap is now safe to detach from the Trap Tray.

Always keep fingers clear of trap entrances.

Declaration & warnings

EC Declaration of Conformity of Machinery (original)

This declaration relates exclusively to the machinery in the state in which it was placed on the market, and excludes components which are added and/or operations carried out subsequently by the final user.

Product: Rat and Stoat Trap / Rat and Mouse Trap, A24; including trap mount kit, Trap Box and Blocker accessories.

Manufacturer: Goodnature Limited, 8 Horner Street, Newtown, Wellington 6021, NEW ZEALAND

Warnings

- USE ONLY Goodnature CO₂ Canisters. Use of other canisters will void warranty
- NEVER use a petroleum-based lubricant in your trap
- ALWAYS store CO₂ Canisters below 49°C
- NEVER leave CO₂ Canisters in a vehicle on a hot day
- ALWAYS dispose of used CO₂ Canisters responsibly
- NEVER crush CO₂ Canisters or put in a fire
- NEVER allow children to play with or around traps
- NEVER submerge your trap
- NEVER use a damaged trap
- NEVER modify your trap
- ALWAYS act responsibly
- USE ONLY as recommended in this Quick start guide
- ALWAYS wear appropriate safety gear when setting and firing a trap
- ONLY test fire your trap as directed: see section: Moving Your Trap
- ALWAYS remove the CO₂ Canister and test-fire to remove final charge before removing the trap from its mounted position

50 g of Lure contains nuts, milk & soya products.

NOT FOR HUMAN CONSUMPTION

goodnature.co.nz/alp-battery-removal

Technical File Authorised owner: Craig Bond, 8 Horner Street, Newtown, Wellington 6021, NEW ZEALAND

This product fulfils all relevant provisions of the Machinery Directive. Signed for an on behalf of: Goodnature Limited, Wellington

Place and date of Issue:
Goodnature Limited, 8 Horner Street, Newtown, Wellington 6021, NEW ZEALAND, 28th June - 2019

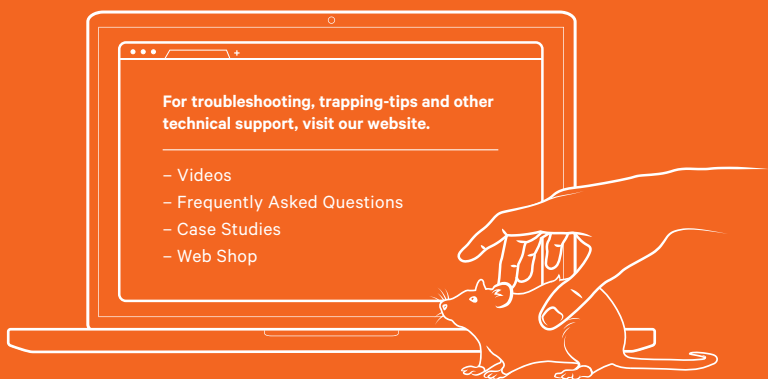
Name, Function, Signature:
Craig R. Bond, Director



- ALWAYS treat your trap as LIVE
- ALWAYS remove the CO₂ Canister and test-fire to remove final charge before moving the trap
- ALWAYS test-fire to remove final charge from the trap after removing the CO₂ Canister and before removing it from the trap mount: see section: Moving Your Trap
- NEVER put hands or objects in the entrance of the trap
- NEVER fire and re-fire the trap in quick succession
- Contains gas under pressure; may explode if heated
- Protect from sunlight. Store in a well-ventilated place
- UN2037 / EN16509
- Carbon Dioxide CO₂, CAS: 124-38-9, 16 g



1.4v



Please recycle after use. This material has been printed using vegetable oil-based/mineral oil-free inks. Printed on uncoated woodfree paper produced from eucalyptus fibres and sourced from sustainable forests.