

barkman™

# SPACES



1948



# LONGEVITY MEASURED NOT IN YEARS, BUT GENERATIONS.



## A Canadian family-owned business for 75 years.

In 1948, my father, Peter Barkman, along with his two brothers started a hardware store in Steinbach, Manitoba, with the simple hope of making a living. While providing poured-in-place concrete septic tanks, the brothers saw an opportunity to improve upon the design and invented a precast concrete tank that streamlined the production process. Realizing the benefits of precast concrete, the company soon began

manufacturing precast steps and was among the first to bring in segmental concrete pavers to North America.

Innovation still makes up the fabric of Barkman's culture and drives us to constantly improve our products, processes and capabilities every day. For over 75 years, innovation has allowed us to grow as a Canadian family business and

has brought us from our humble beginnings to where we are today.

Now, as Barkman transitions into the third generation of family ownership, I am confident that we are well equipped to continue serving you by creating concrete solutions.

**Alan Barkman**  
Chief Executive Officer

2023



- 3 Inspiration
- 8 Spaces
  - 8 Driveways
  - 12 Patios
  - 18 Paths
  - 22 Pool Decks
  - 26 Grand Walls & Steps
  - 30 Garden Walls
  - 34 Landscape Kits
    - 35 Fireplaces & Fire Pits
    - 40 Outdoor Kitchens
    - 44 Pizza Oven
  - 46 Small Spaces
- 48 Pavers
- 69 Slabs
- 78 Walls & Steps
- 94 Finishing Touches
- 98 Landscape Kits
- 104 Important Information
- 105 Basic Paver and Slab Installation
- 108 Basic Wall Installation
- 109 Our Locations





# Inspiration that lives up to your vision

Using colour, texture and scale as our bedrock design tenets, our product lines can express any aesthetic you're able to imagine. From classic to ultra-modern, we invite you to explore our limitless options, all built to help you craft the outdoor living space of your dreams.



# COLOUR

Your space deserves our full spectrum of colours.

From rich creams and pleasing neutrals to various shades of greys and vibrant hues, Barkman offers a wide selection of colours to suit any outdoor space. Many of our standard colours can be special ordered across all product sizes and styles, making your living space truly one-of-a kind.



# TEXTURE

We've got texture for days, and reliability for decades.

Texture is an integral part of nature, and should be a key consideration in creating your outdoor living space. Whether you're looking to create a striking contrast or adapt a more unified approach, our palette of unique textures will ensure a welcome complement to your space.

# SCALE

From big statements to tiny details  
one size never fits all.

Scale and proportion are critical design principles, and cannot be overlooked when creating an outdoor living space. The possibilities are endless, and our array of sizes and shapes make it possible to create the perfect size relationship to suit your space.



MAKE IT

# HOME



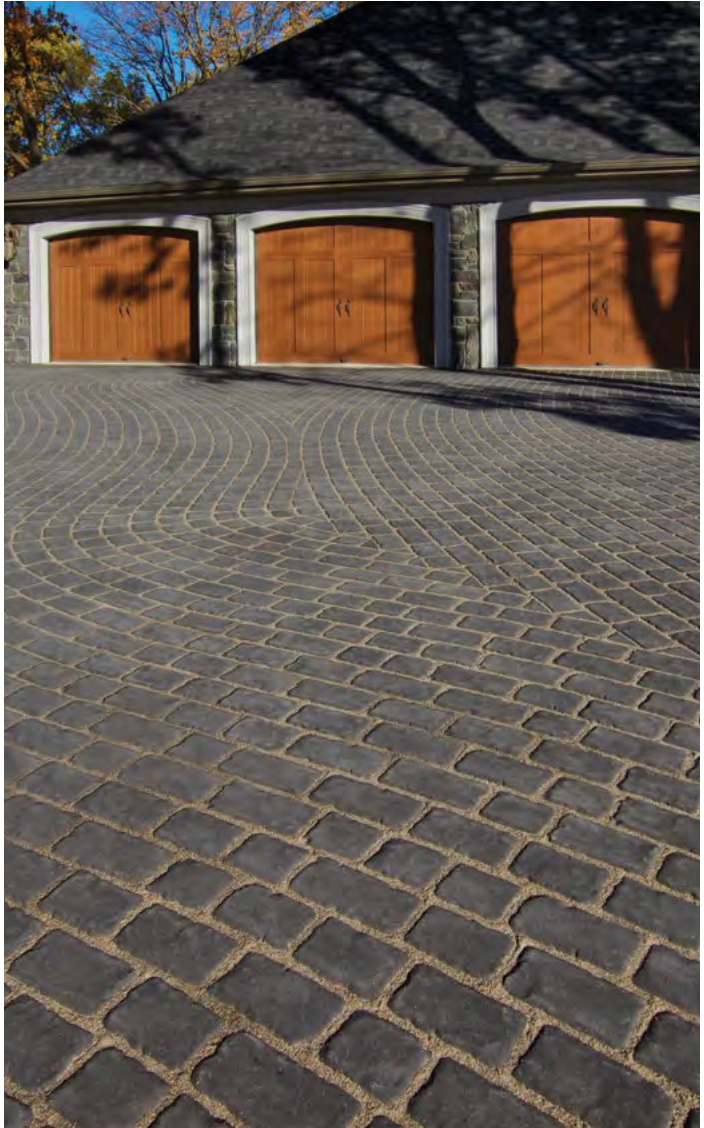
Add the perfect finish  
to complement your lifestyle.

Barkman fireplaces, fire pits and outdoor kitchens allow you to tailor your outdoor space to suit your exact needs and wants. From a simple DIY installation to a fully-appointed kitchen, endless possibilities await.



# DRIVEWAYS

- ◀ Roman Pavers (page 52)
- ▼ Verano Pavers (page 54)
- ▶ Cobble Pavers (page 59)

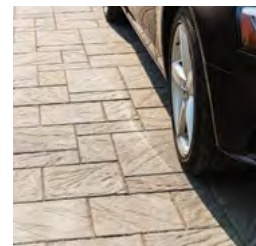


## A big first impression is the only way to roll

Your driveway creates a vital first impression of your home, setting the aesthetic tone for the rest of your property. While exceptional design is critical, our pavers are also engineered to easily withstand the rigours of automotive traffic and Canada's extreme climate fluctuations.



- ◀ Broadway 100mm Pavers (page 62)
- ▼ Broadway 100mm Pavers (page 62)
- ▶ Verano Pavers (page 54)



**Watch your weight:**  
For driveway applications, be sure to choose a paver that is rated for vehicular use.



**Design Tip:**  
**Interlock for stability**  
An interlocking design can create additional strength to support a visually compelling style.



# PATIOS



## Take it up a level, at every level

A well-designed patio is a tribute to the joy of outdoor living. Large or small, Barkman Patios can complement any space to create the ultimate entertaining area for family and friends. Our vast selection of pavers and slabs ensures timeless style paired with lasting durability.

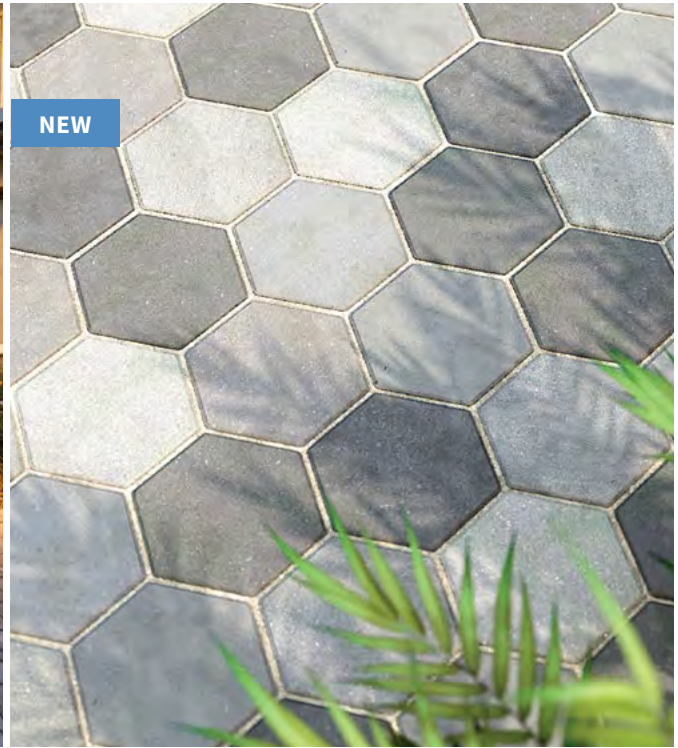


- ▲ Broadway 65mm Pavers (page 56)
- ◀ Rosetta Dimensional Flagstone Slabs (page 75)
- ◀◀ Navarro Pavers (page 61)



**Planning Tip:**  
**Phase it in**  
Consider planning your space in phases, scaling up as your budget and needs permit.





- ▲ Roman Pavers (page 52), Roman Circle Pavers (page 53)
- ▲ Hexagon 65mm Pavers (page 58)
- ▲ Keystone Compac III Walls (page 84) and Navarro Pavers (page 61)
- ▲ Broadway 65mm Pavers (page 56), Keystone Compac III Walls (page 84)



**Planning Tip: Calculate your next move**  
 Visit [barkmanconcrete.com/calculator](http://barkmanconcrete.com/calculator) to help plan a materials list for your project.



- ▶ Flagstone Pavers (page 50)
- ▼ Roman Pavers (page 52)
- ▶▶ Rosetta Grand Flagstone Slabs (page 76), with Holland Pavers border (page 51), Rosetta Belvedere Walls (page 81) and Belvedere Fire Pit (page 102)



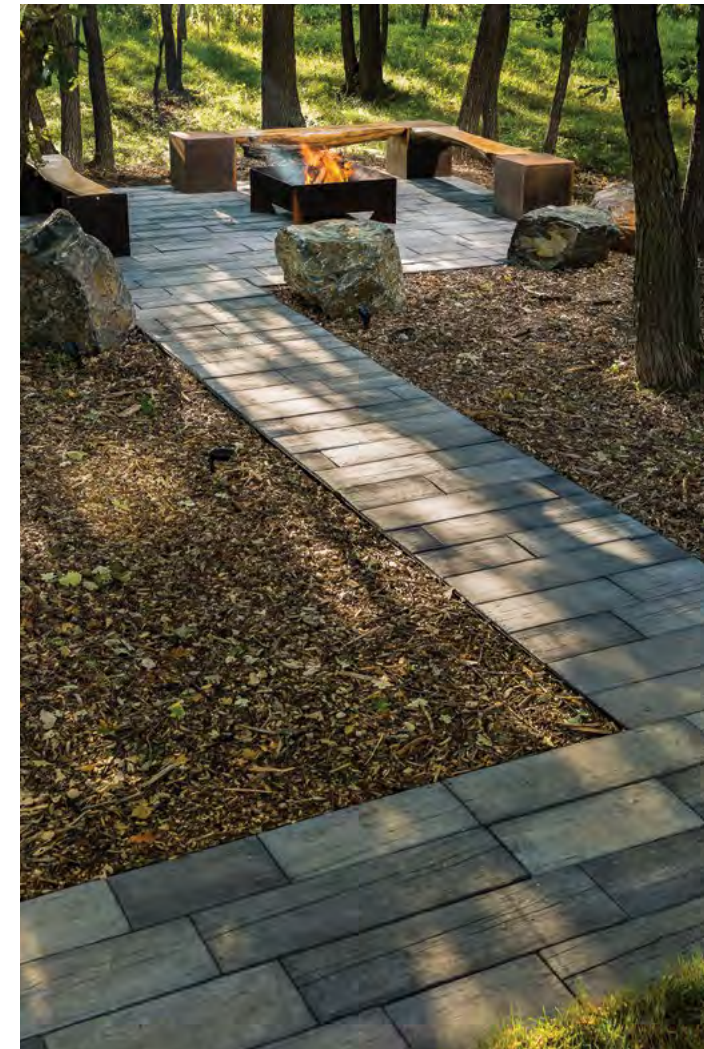
**Make a perfect match**  
When designing your outdoor living space, consider the architectural style of your home to help choose a complementary landscape style.



# PATHS

## Start every journey on solid footing

A well-designed path can add comfort and charm to areas that would otherwise be considered utilitarian. Our array of pavers and slabs make for limitless possibilities that will transform how you move throughout your outdoor living space.



- ▶ Lexington Slabs (page 74)
- ◀ Bridgewood Slabs (page 71)
- ◀◀ Lexington Slabs (page 74)



**Design Tip: Look in the right direction**  
Use your pathway as a way to direct sightlines to points of interest throughout your space.



**A style to suit your tastes**

From linear to organic, solid to divided, our pavers and slabs offer countless choices for creating the ideal path for your space.



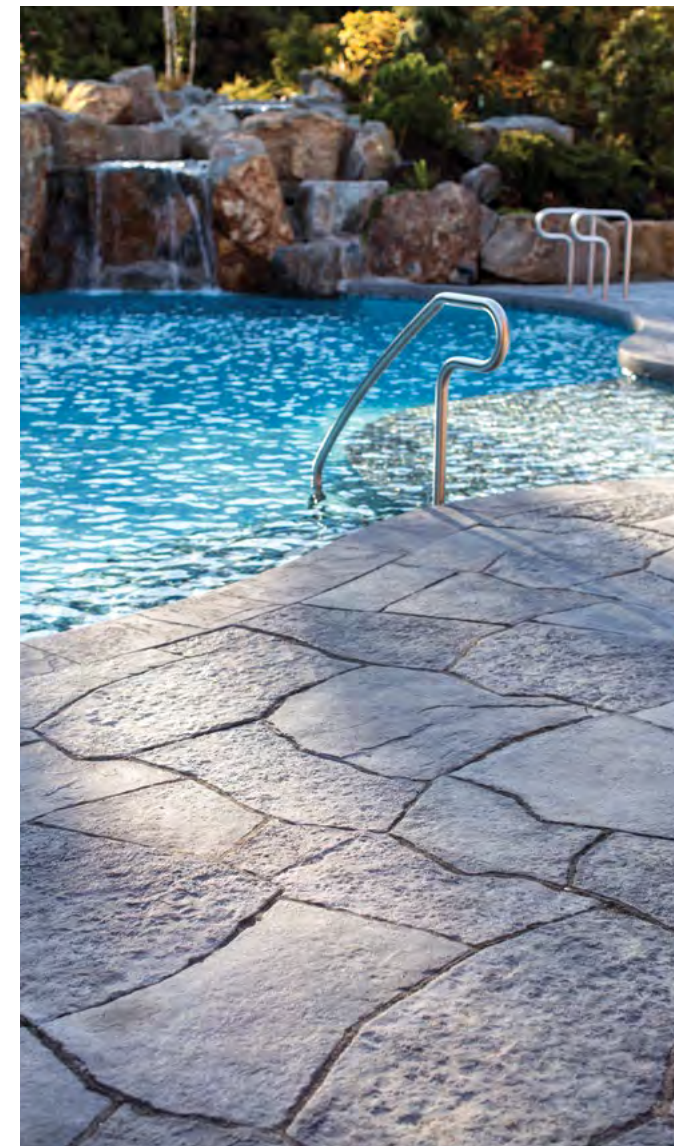
- ▲ Rosetta Dimensional Flagstone Slabs (page 75)
- ◀ Verano Pavers (page 54)
- ▶ Rosetta Grand Flagstone Slabs (page 76)



# POOL DECKS

## Dive in, the options are breathtaking

Your investment deserves to look and perform its absolute best. Barkman products serve as the perfect complement to any style of pool with unmatched reliability to ensure you'll make years of lasting memories.



- ▲ Broadway 65mm Pavers (page 56)
- ◆ Rosetta Grand Flagstone Slabs (page 76)
- ◆◆ Rosetta Dimensional Flagstone Slabs (page 75) and Kodah Walls (page 85)



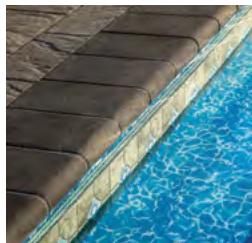
### Design Tip:

#### Keep the focus

Your pool is the focal point of your space. Be sure to plan your layout to accentuate it as the central element.



- ▲ Broadway 65mm Pavers (page 56)
- ◀ Fjord Pavers (page 55)
- ▶ Roman Pavers (page 52), StackStone Fire Pit (page 103)



**Live on the edge**  
Our Bullnose paver is the perfect complement to add functionality and style to your pool deck.



**Construction Tip: Know your limits**  
Pools decks are inherently complex in their construction. Be sure to consult an expert before starting your project.



# GRAND WALLS & STEPS



- ▲ Keystone Compac III Walls (page 84)
- ◀ Rosetta Kodah Walls (page 85)
- ◀◀ Rosetta Belvedere Walls (page 81)

## Make a grand statement, and set it in stone

We offer a wide variety of retaining wall options to suit any design idea for small and large scale projects. The quality and diversity of our wall products allow you to incorporate steps, tiers, and planting beds into your design.



- ◀ Broadway 65mm Pavers (page 56) and Architectures Walls (page 79)
- ◀◀ Rosetta Dimensional Walls (page 83) and Dimensional Steps (page 92)
- ▼ Rosetta Outcropping Walls (page 87)
- ▶ Architectures Walls (page 79)



**Planning Tip:**  
**Scale it to suit**  
 Scale of wall size should be in relation to the size of your property. It should be a noticeable feature, but not feel overbearing.

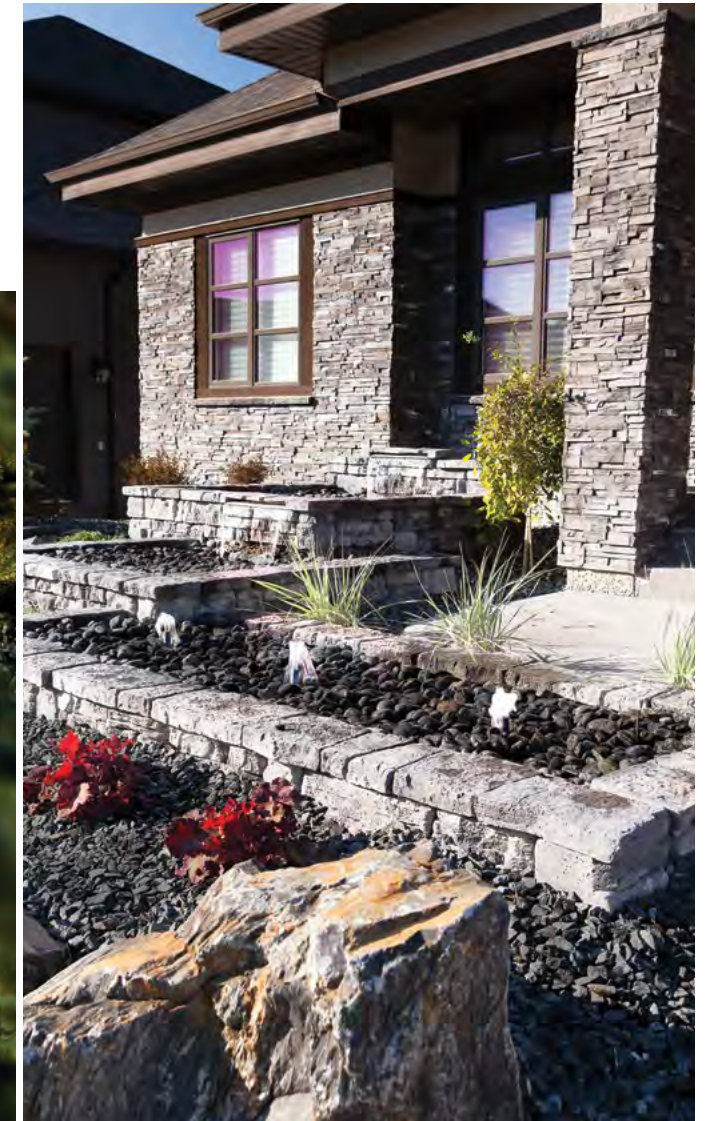




# GARDEN WALLS



- Rosetta Belvedere Walls (page 81)
- ▾ Bridgewood Walls (page 82)
- ◀ Architextures Walls (page 79)



## Fuse design and nature for a striking impression

Perfect for retaining flower beds or as freestanding accent dividers, these fully customizable garden walls are not only functional, but will also improve your home's curb appeal.



- ▶ Architextures Walls (page 79)
- ▼ Rosetta Belvedere Walls (page 81)
- ▶▶ Keystone Compac III Walls (page 84)



**Options, options, options!**  
The styles, shapes and sizes afforded by our wall products are endless.



# LANDSCAPE KITS

Designed to minimize complexity  
and maximize your enjoyment



Actual colours may vary per region and production facility.

## Fireplaces & Fire Pits

Whether you are entertaining friends or enjoying a quiet night for two, time spent around one of our fireplaces or fire pits is sure to help you unwind. As complete kits, they come with detailed instructions and materials, so you can cozy up and start enjoying long evenings around a warm fire today.



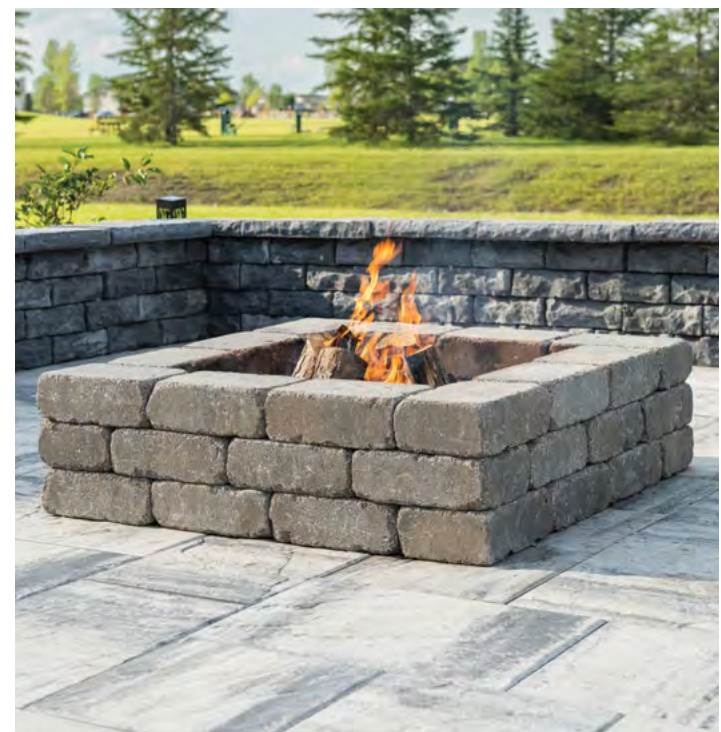
- ◀ Rosetta Dimensional Fire Pit (page 102) and Bridgewood Slabs (page 71)
- ▲ Rosetta Belvedere Fire Pit (page 102) and Dimensional Flagstone Slab (page 75)
- ◀◀ Quarry Stone Compact Fireplace (page 99) and Fjord Pavers (page 55)



**Design Tip:**  
Big upgrades at a small cost  
Fire pits provide a fantastic  
return on investment, truly  
transforming your entire  
space with minimal expense.



**Planning Tip: Say it with an accent**  
Install a fireplace or fire pit as an upgrade to accent an existing patio.



- ▲ StackStone Fire Pit (page 103) with Coping and Liner (new), Roman Circle Pavers (page 53)
- ▲ Bridgewood Fire Pit (page 100), Roman Pavers (page 52)
- ▲ Quarry Stone Fire Pit (page 101), Dimensional Walls (page 83), Broadway 65mm Pavers (page 56)
- ▶ Quarry Stone Fireplace with Wood Storages (page 99), Bridgewood Slabs (page 71)





- ◀ Architectures Fire Pit (page 100),  
Broadway 100mm Pavers (page 62)  
and Broadway Plank 100mm Pavers  
(page 64)
- ▼ Smooth Quarry Stone Fire Pit (page 101),  
Broadway 65mm Pavers (page 56)
- ◀◀ Rosetta Belvedere Wall (page 81),  
Belvedere Fire Pit (page 102),  
Broadway 65mm Pavers (page 56)



**Planning Tip: Play it safe.**  
Never use accelerants like gasoline,  
garden clippings or garbage as  
these can quickly cause fires  
to become unmanageable.



# Outdoor Kitchens

Move the party outside and create a space that's perfect for cooking and entertaining. Whether you are updating an existing property, or creating something completely new, Barkman Outdoor Kitchen Kits are tailored to suit spaces both large and small. Our kits can be updated over time to add features as your taste and budget evolve.



- ◀ Quarry Stone Grill Surround on each sides of a standard BBQ grill (the grill is not included in the kit), Quarry Stone Corner Unit, Quarry Stone Bar Counter, Arborwood Slabs (page 70)
- ▶ Quarry Stone Wood Grill in between Quarry Stone End Units, Roman Pavers (page 52)

**Made to order**

Barkman Outdoor Kitchen Kits are endlessly flexible and can be perfectly tailored for ideal functionality.



- ▲ Quarry Stone Grill Base (grill head not included in kit), Quarry Stone Corner Unit, Quarry Stone Fridge Surround (fridge unit not included in kit) and Roman Paver (page 52)
- ◆ Two Quarry Stone Grill Surrounds (grill unit not included in kit), Quarry Stone Corner Unit, Quarry Stone Bar Counter and Broadway 65mm Pavers (page 56)
- ◀◀ Quarry Stone Bar Counter on both ends, Quarry Stone Wood Grill, Quarry Stone Rocket Stove, Quarry Stone Compact Pizza Oven, Quarry Stone Fridge Surround (fridge not included), Broadway 65mm Pavers (page 56), Bridgewood Fire Pit (page 100)



- ◀ Quarry Stone Compact Pizza Oven, Quarry Stone End Units, Cobble Pavers (page 59)
- ▼ Quarry Stone Compact Pizza Oven

There are two components that make up our Quarry Stone Compact Pizza Oven – the Quarry Stone Compact Pizza Oven Unit (Nonno Peppe) and the Quarry Stone Storage Unit. Each component is sold separately. Nonno Peppe pizza oven design may not be exactly as shown.



## Pizza Oven

Take outdoor cooking to a new level of excitement with our Quarry Stone Compact Pizza Oven kit. The easy-to-assemble kit creates a stylish and compact pizza oven perfect for any backyard or patio. It provides the perfect spot to cook fresh gourmet pizzas and other oven-baked recipes outdoors.





# SMALL SPACES

Start small, start something spectacular

We know that each space is as unique as the people who spend time in it. We created Small Spaces for first time homeowners, those on a limited project budget, or a small, urban backyard. Fashion a fantastic backyard that fits your life, exactly as you live it right now.



- ▲ Rosetta Belvedere Fire Pit (page 102)
- ▲ Roman Pavers (page 52)
- ▶ Brookside Slabs (page 72)
- ◀ Broadway 65mm Pavers (page 56)



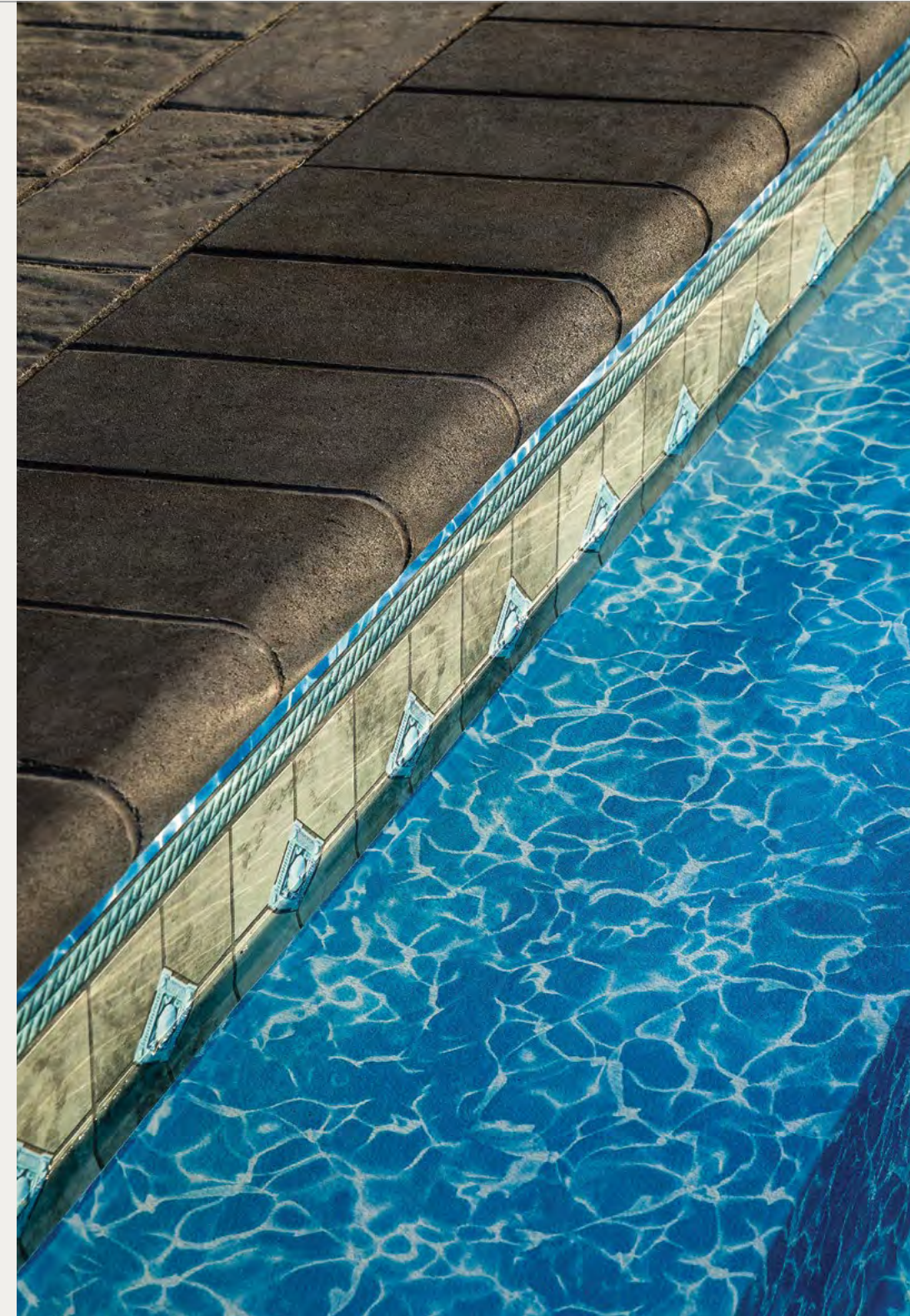
# PAVERS

Barkman pavers offer a wide selection of options for your patio, walkway, driveway or parking space. Proven through testing and years of real world applications, we believe we have a paver for any aspiring design.

The Pavers section is organized by paver heights to make it easier for you to select the right pavers for your landscape project:

60 mm	65 mm	80 mm	100 mm
49	55	59	62

## Bullnose 60mm



### COLOURS



Charcoal

### SIZES (LxWxH)



305 x 152 x 60 mm  
12.00 x 6.00 x 2.36 in

### APPLICATIONS



Pedestrian



# Flagstone 60mm



## COLOURS



Antique Brown



Sierra Grey

## SIZES (LxWxH)



457.3 x 379.1/228 x 60 mm  
18 x 14.92 / 8.98 x 2.36 in

## APPLICATIONS



Pedestrian



# Holland 60mm



## COLOURS



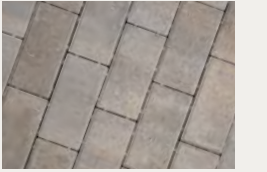
Antique Brown



Charcoal



Natural



Sierra Grey

## BC-EXCLUSIVE COLOUR (NEW)



Graphite

## SIZES (LxWxH)



210 x 210 x 60 mm  
8.27 x 8.27 x 2.36 in



210 x 105 x 60 mm  
8.27 x 4.13 x 2.36 in



Holland 8 cm  
210 x 105 x 80 mm  
8.27 x 4.13 x 3.15 in

## APPLICATIONS



Pedestrian



Road/ Vehicular

The small Holland Paver size exists in both 60mm and 80mm thicknesses.



# Roman 60mm



## COLOURS



Antique Brown



Charcoal



Desert Buff



Sierra Grey

## BC-EXCLUSIVE COLOURS (NEW)



Graphite



Natural

## SIZES (LxWxH)



210 x 315 x 60 mm  
8.27 x 12.40 x 2.36 in



210 x 262.5 x 60 mm  
8.27 x 10.33 x 2.36 in



210 x 157.5 x 60 mm  
8.27 x 6.20 x 2.36 in



210 x 105 x 60 mm  
8.27 x 4.13 x 2.36 in

## APPLICATIONS



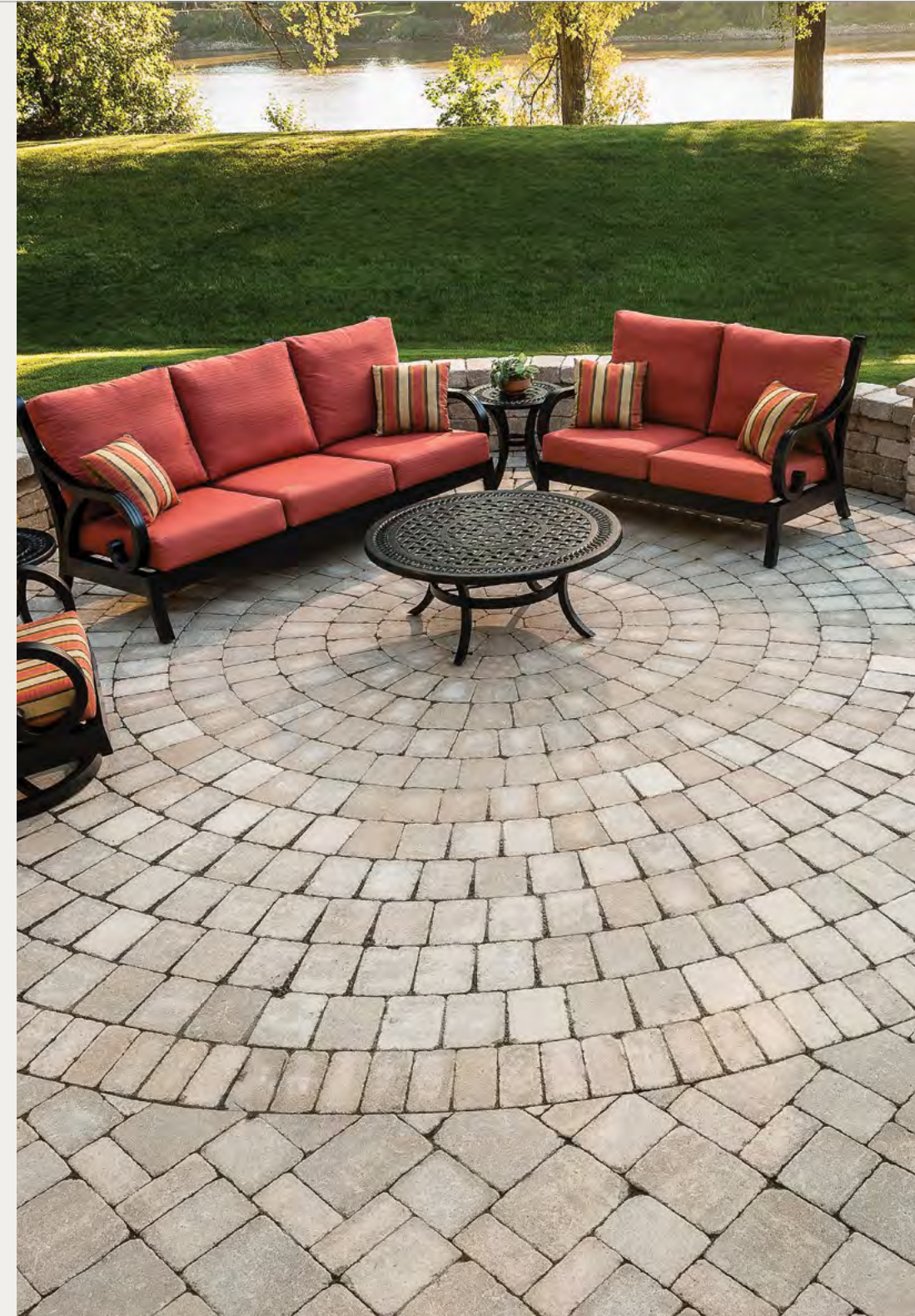
Pedestrian



Road/Vehicular



# Roman Circle 60mm



## COLOURS



Antique Brown



Charcoal



Sierra Grey

## BC-EXCLUSIVE COLOURS (NEW)



Graphite



Natural

## SIZES (OUTSIDE DIAMETER X H)

3148 x 60 mm  
123.96 x 2.36 in

## APPLICATIONS



Pedestrian



Road/Vehicular



# Verano 60mm



## COLOURS



Charcoal



Sierra Grey

## SIZES (LxWxH)



292.1 x 292.1 x 60 mm  
11.5 x 11.5 x 2.36 in



292.1 x 146.1 x 60 mm  
11.5 x 5.75 x 2.36 in



146.1 x 146.1 x 60 mm  
5.75 x 5.75 x 2.36 in

## APPLICATIONS



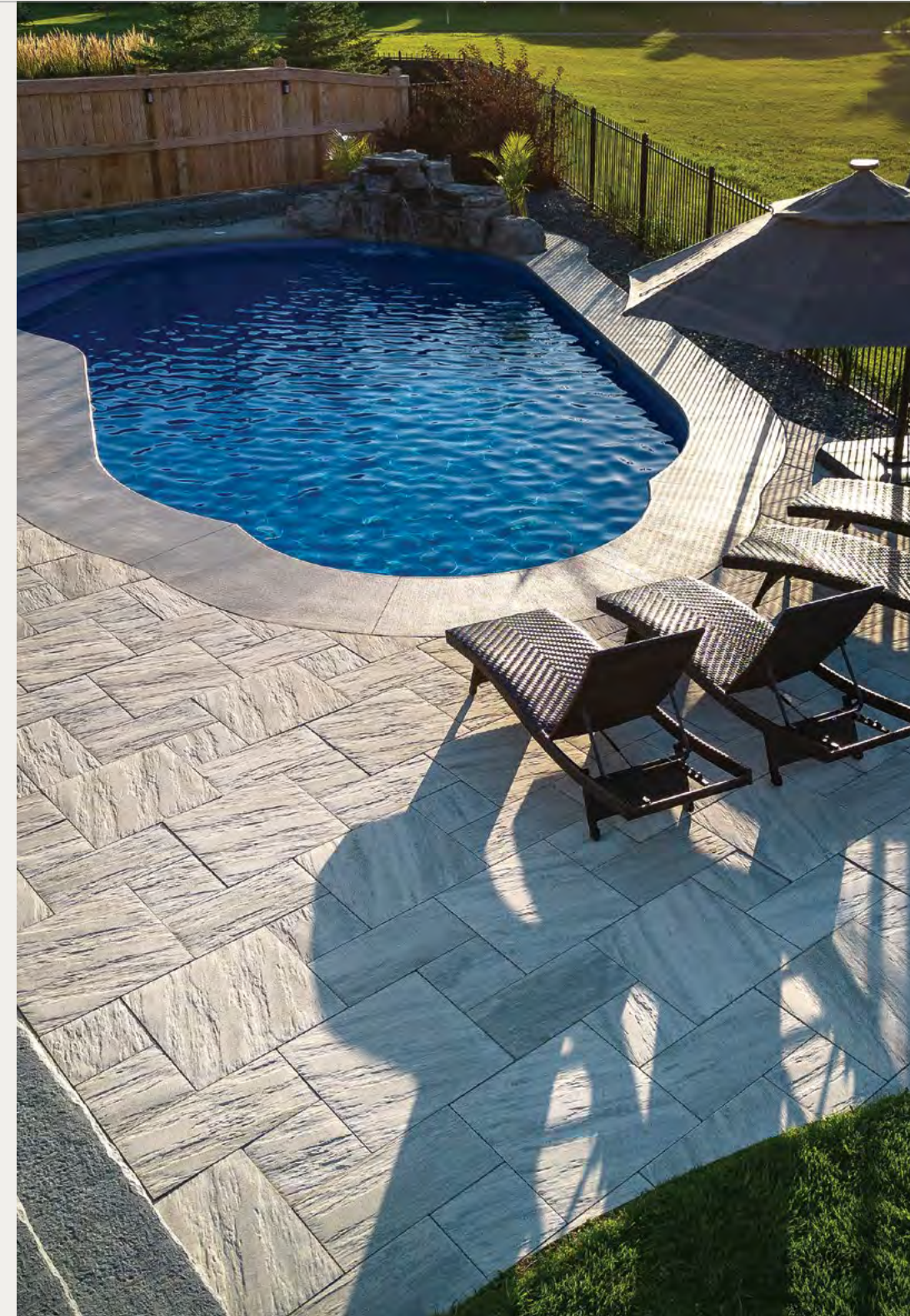
Pedestrian



Road/ Vehicular



# Fjord 65mm



## COLOURS



Bedrock



Glacier

## SIZES (LxWxH)



300 x 300 x 65 mm  
11.81 x 11.81 x 2.56 in



600 x 300 x 65 mm  
23.62 x 11.81 x 2.56 in



600 x 600 x 65 mm  
23.62 x 23.62 x 2.56 in

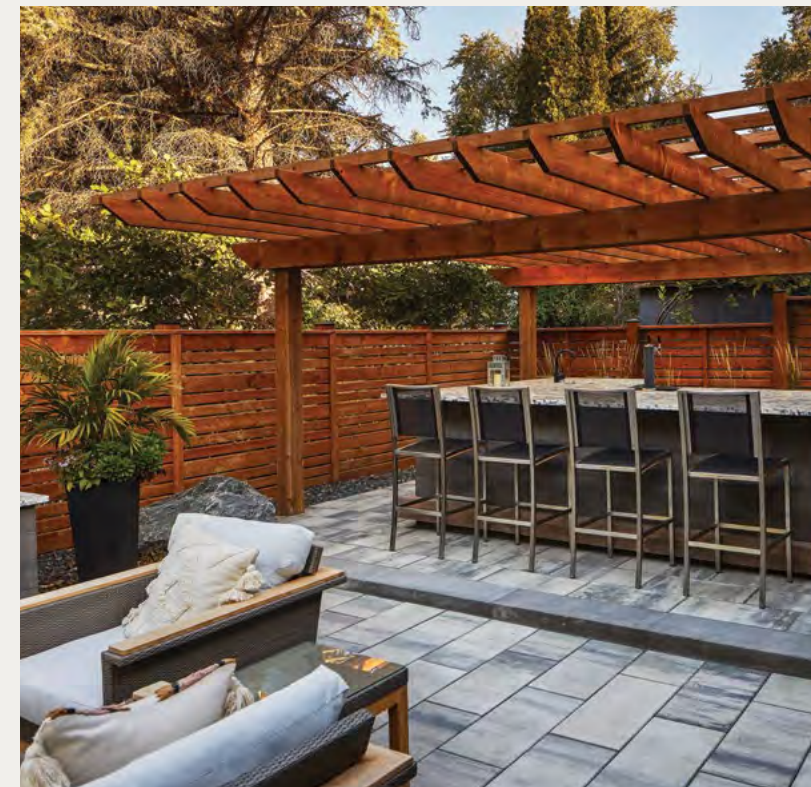
## APPLICATIONS



Pedestrian



# Broadway 65mm



## COLOURS



Amber



Ash



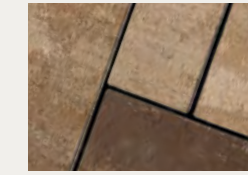
Charcoal



Natural



Quartz



Sandstone



Sterling

## BC-EXCLUSIVE COLOURS (NEW)



Graphite



Sierra Grey

## SIZES (L x W x H)

300 x 150 x 65 mm  
11.81 x 5.91 x 2.56 in

600 x 300 x 65 mm  
23.62 x 11.81 x 2.56 in

300 x 300 x 65 mm  
11.81 x 11.81 x 2.56 in

600 x 600 x 65 mm  
23.62 x 23.62 x 2.56 in

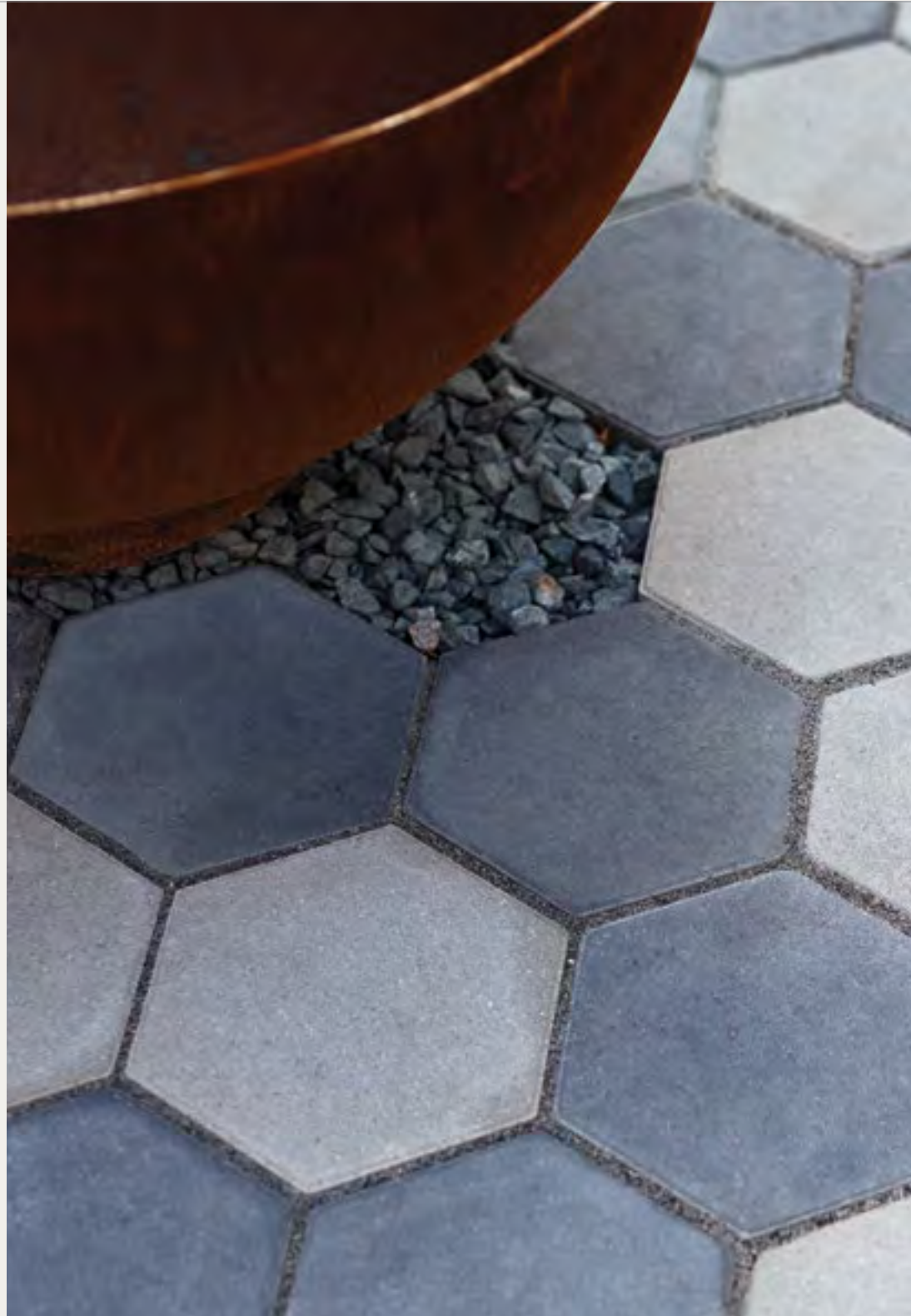
## APPLICATIONS



Pedestrian



# Hexagon 65mm NEW



## COLOURS



Ash



Charcoal



Natural

## SIZES (LxWxH)



225 x 195 x 65  
8.86 x 7.68 x 2.56

## APPLICATIONS



Pedestrian



Road/Vehicular



# Cobble 80mm



## COLOURS



Charcoal

## SIZES (LxWxH)



300 x 150 x 80 mm  
11.81 x 5.91 x 3.15 in



260 x 150 x 80 mm  
10.24 x 5.91 x 3.15 in



220 x 150 x 80 mm  
8.66 x 5.91 x 3.15 in



180 x 150 x 80 mm  
7.09 x 5.91 x 3.15 in

## APPLICATIONS



Pedestrian



Road/Vehicular



# Mesa Flagstone 80mm



## COLOURS



Sierra Grey



Sterling

## SIZES (LxWxH)



613.3 x 330.8 x 80 mm  
24.14 x 13.02 x 3.15 in

## APPLICATIONS



Pedestrian



Road/Vehicular



# Navarro 80mm



## COLOURS



Charcoal



Sierra Grey

## SIZES (LxWxH)



306 x 459 x 80 mm  
12.05 x 18.07 x 3.15 in



306 x 306 x 80 mm  
12.05 x 12.05 x 3.15 in



306 x 153 x 80 mm  
12.05 x 6.02 x 3.15 in

## APPLICATIONS



Pedestrian



Road/Vehicular





# Broadway 100mm



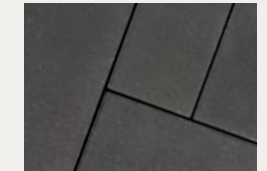
## COLOURS



Amber



Ash



Charcoal



Natural



Quartz



Sterling

## SIZES (L x W x H)

300 x 150 x 100 mm  
11.81 x 5.91 x 3.94 in

900 x 450 x 100 mm  
35.43 x 17.72 x 3.94 in

300 x 300 x 100 mm  
11.81 x 11.81 x 3.94 in

600 x 300 x 100 mm  
23.62 x 11.81 x 3.94 in

900 x 900 x 100 mm  
35.43 x 35.43 x 3.94 in

## APPLICATIONS



Pedestrian



Road/Vehicular



# Broadway Planks 100mm



## COLOURS



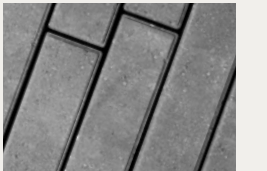
Amber



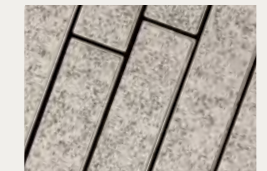
Ash



Charcoal



Natural



Quartz



Sterling

## SIZES (LxWxH)

451 x 76 x 100 mm  
17.76 x 2.99 x 3.94 in

400 x 100 x 100 mm  
15.75 x 3.94 x 3.94 in

600 x 150 x 100 mm  
23.62 x 5.91 x 3.94 in

## APPLICATIONS



Pedestrian



Road/Vehicular



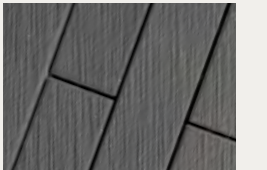
# Broadway Contour 100mm NEW



## SPECIAL ORDER COLOURS



Ash



Charcoal



Natural



Sterling

Broadway Contour 100mm features a striated texture that's slip-resistant and adds a striking accent to any given space. It blends well with the Broadway product line and allows for a versatile array of patterns for different applications.

## SIZES (LxWxH)

451 x 76 x 100 mm  
17.76 x 2.99 x 3.94 in

600 x 150 x 100 mm  
23.62 x 5.91 x 3.94 in

400 x 100 x 100 mm  
15.75 x 3.94 x 3.94 in

600 x 300 x 100 mm  
23.62 x 11.81 x 3.94 in

## APPLICATIONS



Pedestrian



Road/Vehicular




# Permeable and Erosion Control Pavements



Colonial Eco Paver

**SIZES (LxWxH)**

  
 157 x 157 x 80 mm  
 6.18 x 6.18 x 3.15 in  
 Colours: Custom Order


**APPLICATIONS**

   
 Pedestrian Road/ Vehicular



Holland Eco Paver

**SIZES (LxWxH)**

  
 210 x 105 x 80 mm  
 8.27 x 4.13 x 3.15 in  
 Colours: Custom Order


**APPLICATIONS**

   
 Pedestrian Road/ Vehicular



Turfstone Eco Paver

**SIZES (LxWxH)**

  
 599 x 399 x 80 mm  
 23.58 x 15.71 x 3.15 in  
 Colour: Natural

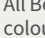
**APPLICATIONS**

   
 Pedestrian Road/ Vehicular



Boardwalk Paver 80mm

**SIZES (LxWxH)**

  
 All Boardwalk 80mm  
 colours are special  
 order.  
 All 8 sizes come in one  
 pallet and are not sold  
 individually.

**APPLICATIONS**

   
 Pedestrian Road/ Vehicular



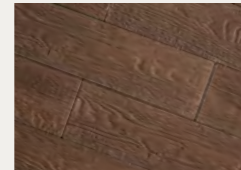
## SLABS

From the rustic wood grains of Bridgewood to the bold colours and textures of Lexington, Barkman offers a wide variety of slabs to suit any architectural style.

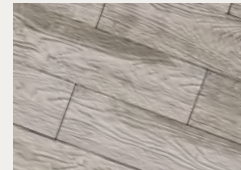
# Arborwood



## COLOURS



Kodiak Brown



Timber Wolf Grey

## SIZES (LxWxH)



800 x 200 x 60 mm  
31.5 x 7.87 x 2.36 in

## APPLICATIONS



Pedestrian



# Bridgewood



## COLOURS



Cedar Brown



Weathered Grey

## SIZES (LxWxH)



890 x 250 x 51 mm  
35.04 x 9.84 x 2 in



595 x 250 x 51 mm  
23.43 x 9.84 x 2 in

440 x 250 x 51 mm  
17.32 x 9.84 x 2 in

## APPLICATIONS



Pedestrian



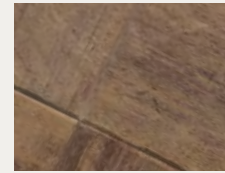
# Brookside



## COLOURS



Charcoal



Hazel



Sierra Grey

## SIZES (LxWxH)



400 x 400 x 50 mm  
15.75 x 15.75 x 1.97 in



400 x 600 x 50 mm  
15.75 x 23.62 x 1.97 in

## APPLICATIONS



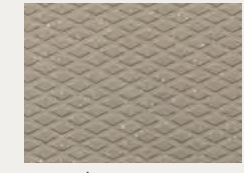
Pedestrian



# Diamond Face



## COLOURS



Natural

## SIZES (LxWxH)



610 x 762 x 51 mm  
24 x 30 x 2 in



610 x 610 x 51 mm  
24 x 24 x 2 in



457 x 457 x 51 mm  
18 x 18 x 2 in

## APPLICATIONS



Pedestrian



# Lexington



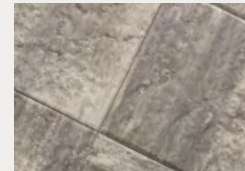
## COLOURS



Flint



Sandstone



Sterling

## SIZES (LxWxH)



400 x 400 x 50 mm  
15.75 x 15.75 x 1.97 in



400 x 600 x 50 mm  
15.75 x 23.62 x 1.97 in

## APPLICATIONS



Pedestrian



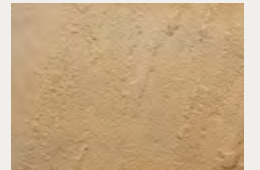
# Rosetta® Dimensional Flagstone



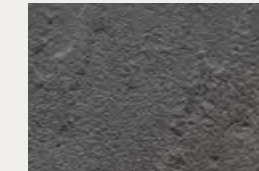
## COLOURS



Copper Canyon



Fond du Lac



Northern Charcoal



Pacific Grey

## SIZES (LxWxH)



610 x 610 x 51 mm  
24 x 24 x 2 in



305 x 457 x 51 mm  
12 x 18 x 2 in



457 x 610 x 51 mm  
18 x 24 x 2 in



305 x 305 x 51 mm  
12 x 12 x 2 in



457 x 457 x 51 mm  
18 x 18 x 2 in



305 x 152 x 51 mm  
12 x 6 x 2 in

## APPLICATIONS



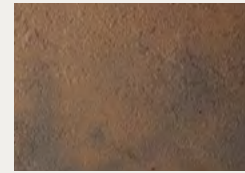
Pedestrian



# Rosetta® Grand Flagstone



## COLOURS



Copper Canyon



Fond du Lac



Northern Charcoal



Pacific Grey

## SIZES (LxWxH)



1067 x 965 x 51 mm  
42 x 38 x 2 in

## APPLICATIONS



Pedestrian



# Terrace Slabs (BC-Exclusive) NEW



## COLOURS



Charcoal



Graphite



Natural

## SIZES (LxWxH)



610 x 610 x 51 mm  
24 x 24 x 2 in

## APPLICATIONS



Pedestrian



Rooftop





# WALLS & STEPS

Barkman's wide selection of retaining walls and steps are as versatile as they are stylish. Whatever your project, large or small, Barkman has the wall system for you.



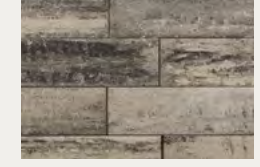
COLOURS



Ash



Flint



Sterling

SIZES (LxWxH)

Standard  
150 x 900 x 285 mm  
5.9 x 35.43 x 11.22 in

Coping  
150 x 900 x 285 mm  
5.9 x 35.43 x 11.22 in

Corner  
150 x 900 x 285 mm  
5.9 x 35.43 x 11.22 in

APPLICATIONS



Garden Walls



Retaining Walls

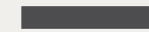




## COLOURS

This product is special order

## SIZES (L x W x H)



Atlas Standard  
150 x 900 x 285 mm  
5.9 x 35.43 x 11.22 in



Atlas Corner  
150 x 900 x 285 mm  
5.9 x 35.43 x 11.22 in

## APPLICATIONS



Garden  
Walls



Retaining  
Walls



## COLOURS



Copper Canyon



Fond du Lac



Northern Charcoal



Pacific Grey

## SIZES (L x W x H)

### Wall Pallet

152 x 457 [406] x 229 mm  
6 x 18 [16] x 9 in

152 x 305 [254] x 229 mm  
6 x 12 [10] x 9 in

152 x 152 [102] x 229 mm  
6 x 6 [4] x 9 in

76 x 457 [406] x 229 mm  
3 x 18 [16] x 9 in

76 x 305 [254] x 229 mm  
3 x 12 [10] x 9 in

76 x 152 [102] x 229 mm  
3 x 6 [4] x 9 in

### Corner Pallet

76 x 381 [356] x 229 mm  
6 x 15 [14] x 9 in

76 x 381 [356] x 229 mm  
3 x 15 [14] x 9 in

### Coping Pallet

57 x 457 [406] x 260 mm  
2.25 x 18 [16] x 10.25 in

57 x 457 [432] x 260 mm  
2.25 x 18 [17] x 10.25 in

57 x 305 [254] x 260 mm  
2.25 x 12 [10] x 10.25 in

57 x 152 [102] x 260 mm  
2.25 x 6 [4] x 10.25 in

## APPLICATIONS



Garden  
Walls



Retaining  
Walls

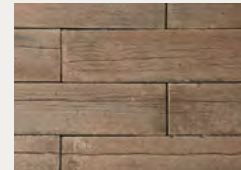
Note: Rosetta Belvedere Walls are replicated from real stone moulds. Barkman uses enhanced manufacturing techniques to mitigate any height variation, however, some shimming may be required in installing this product.



# Bridgewood Wall



## COLOURS



Cedar Brown



Weathered Grey

## SIZES (LxWxH)



152 x 1067 x 203 mm  
6 x 42 x 8 in

## APPLICATIONS



Garden Walls



Retaining Walls



# Rosetta Dimensional Wall



## COLOURS



Copper Canyon



Fond du Lac



Northern Charcoal



Pacific Grey

## SIZES (LxWxH)

### Straight

102 x 305 x 203 mm  
4 x 12 x 8 in

### Wedge

102 x 305 [229] x 203 mm  
4 x 12 [9] x 8 in

### Coping

64 x 610 x 318 mm  
2.50 x 24 x 12.50 in

64 x 457 x 318 mm  
2.50 x 18 x 12.50 in

64 x 483 x 318 mm  
2.50 x 19 x 12.50 in

## APPLICATIONS



Garden Walls



# Keystone Compac® III



## COLOURS



Charcoal



Natural



Sierra Grey

## BC-EXCLUSIVE COLOUR (NEW)



Graphite

## SIZES (LxWxH)



**Standard**  
203 x 457 x 305 mm  
8 x 18 x 12 in



**Corner**  
203 x 457.2 x 228.6 mm  
8 x 18 x 9 in



**Coping**  
100 x 450 x 300 mm  
3.94 x 17.71 x 11.81 in

## APPLICATIONS



Garden  
Walls



Retaining  
Walls



# Rosetta® Kodah



## COLOURS



Copper Canyon



Fond du Lac



Northern Charcoal



Pacific Grey

## SIZES (LxWxH)

**Wall Pallet**  
152 x 305 x 267 mm  
6 x 12 x 10.5 in

152 x 533 x 267 mm  
6 x 21 x 10.5 in

152 x 762 x 267 mm  
6 x 30 x 10.5 in

152 x 1067 x 267 mm  
6 x 42 x 10.5 in

**Corner Pallet**  
152 x 533 x 267 mm  
6 x 21 x 10.5 in

## APPLICATIONS



Garden  
Walls



Retaining  
Walls

Note: All sizes come in one pallet and are not sold individually.





## FACE OPTIONS

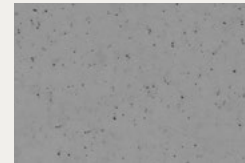


Boulder Face



Ledgestone Face

## COLOURS



Natural Grey

MagnumStone™ can be left as natural grey or custom colour stained after installation.

## SIZES (LxWxH)

Face Size  
610 x 1219 x 610 mm  
24 x 48 x 24 in

## APPLICATIONS



Garden Walls



Retaining Walls



## COLOURS



Copper Canyon



Fond du Lac



Northern Charcoal



Pacific Grey

## SIZES (LxWxH)

### Pallet A

305 x 1067 x 610 [508] mm  
12 x 42 x 24 [20] in

305 x 1219 x 610 [508] mm  
12 x 48 x 24 [20] in

305 x 1524 x 610 [508] mm  
12 x 60 x 24 [20] in

305 x 1676 x 610 [508] mm  
12 x 66 x 24 [20] in

### Pallet B

152 x 610 x 610 [508] mm  
6 x 24 x 24 [20] in

152 x 914 x 610 [508] mm  
6 x 36 x 24 [20] in

152 x 1219 x 610 [508] mm  
6 x 48 x 24 [20] in

305 x 914 x 610 [508] mm  
12 x 36 x 24 [20] in

305 x 1372 x 610 [508] mm  
12 x 54 x 24 [20] in

305 x 1829 x 610 [508] mm  
12 x 72 x 24 [20] in

### Pallet C

152 x 610 x 610 [508] mm  
6 x 24 x 24 [20] in

152 x 914 x 610 [508] mm  
6 x 36 x 24 [20] in

610 x 1219 x 610 [508] mm  
24 x 48 x 24 [20] in

457 x 1524 x 610 [508] mm  
18 x 60 x 24 [20] in

### Pallet D (Freestanding)

305 x 1524 x 762 mm  
12 x 60 x 30 in

305 x 1219 x 762 mm  
12 x 48 x 30 in

152 x 1219 x 762 mm  
6 x 48 x 30 in

### Pallet E (Freestanding)

305 x 1829 x 762 mm  
12 x 72 x 30 in

305 x 914 x 762 mm  
12 x 36 x 30 in

152 x 914 x 762 mm  
6 x 36 x 30 in

### Corner

305 x 1219 x 737 mm  
12 x 48 x 30 in

Pallets A, B, C, D, E include predetermined block sizes that are not sold separately.

## APPLICATIONS



Garden Walls



Retaining Walls



# Quarry Stone



## COLOURS



Charcoal



Sierra Grey



Smooth Charcoal

## SIZES (LxWxH)



**Standard**  
102 x 305 x 203 mm  
4 x 12 x 8 in



**Smooth Standard**  
102 x 305 x 203 mm  
4 x 12 x 8 in

## APPLICATIONS



Garden  
Walls



# RomanStack®



## COLOURS



Charcoal



Desert Buff



Sierra Grey

## SIZES (LxWxH)



**Standard**  
102 x 203 [152] x 203 mm  
4 x 8 [6] x 8 in



**Coping**  
102 x 203 [152] x 203 mm  
4 x 8 [6] x 8 in



**Advanced Corner**  
102 x 280 [203] x 203 mm  
4 x 11 [8] x 8 in

## APPLICATIONS



Garden  
Walls





COLOURS



Charcoal



Desert Buff



Sierra Grey

SIZES (LxWxH)



Standard  
102 x 203 [152] x 203 mm  
4 x 8 [6] x 8 in



Coping  
102 x 203 [152] x 203 mm  
4 x 8 [6] x 8 in



Advanced Corner  
102 x 280 [203] x 203 mm  
4 x 11 [8] x 8 in

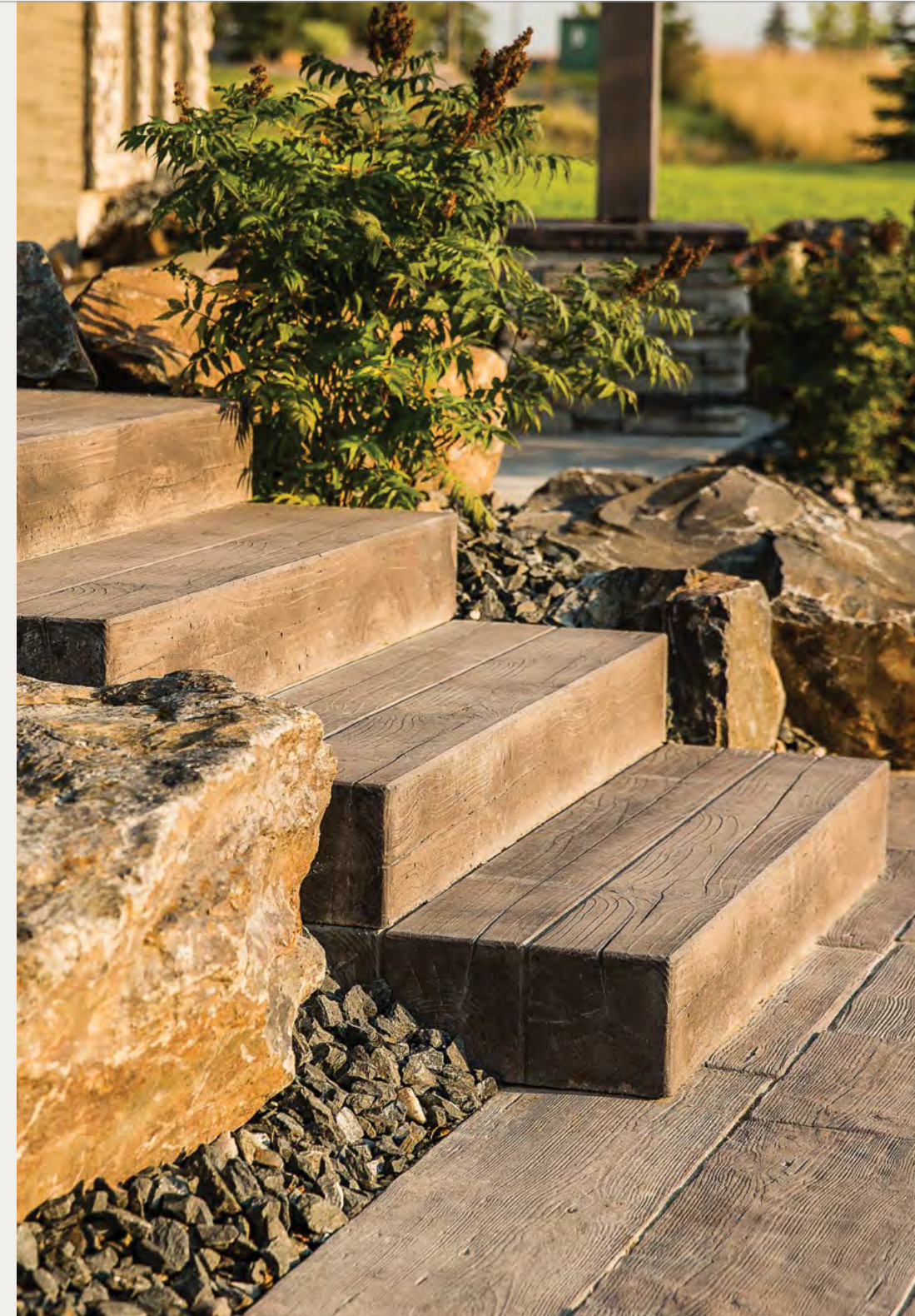
APPLICATIONS



Garden  
Walls



# Bridgewood Steps



COLOURS



Cedar Brown



Weathered Grey

SIZES (LxWxH)



1200 x 400 x 140 mm  
47.24 x 17.75 x 5.51 in



# Rosetta® Dimensional Steps



## COLOURS



Copper Canyon



Fond du Lac



Northern Charcoal



Pacific Grey

## SIZES (LxWxH)



**3' length**  
914 x 457 x 178 mm  
36 x 18 x 7 in



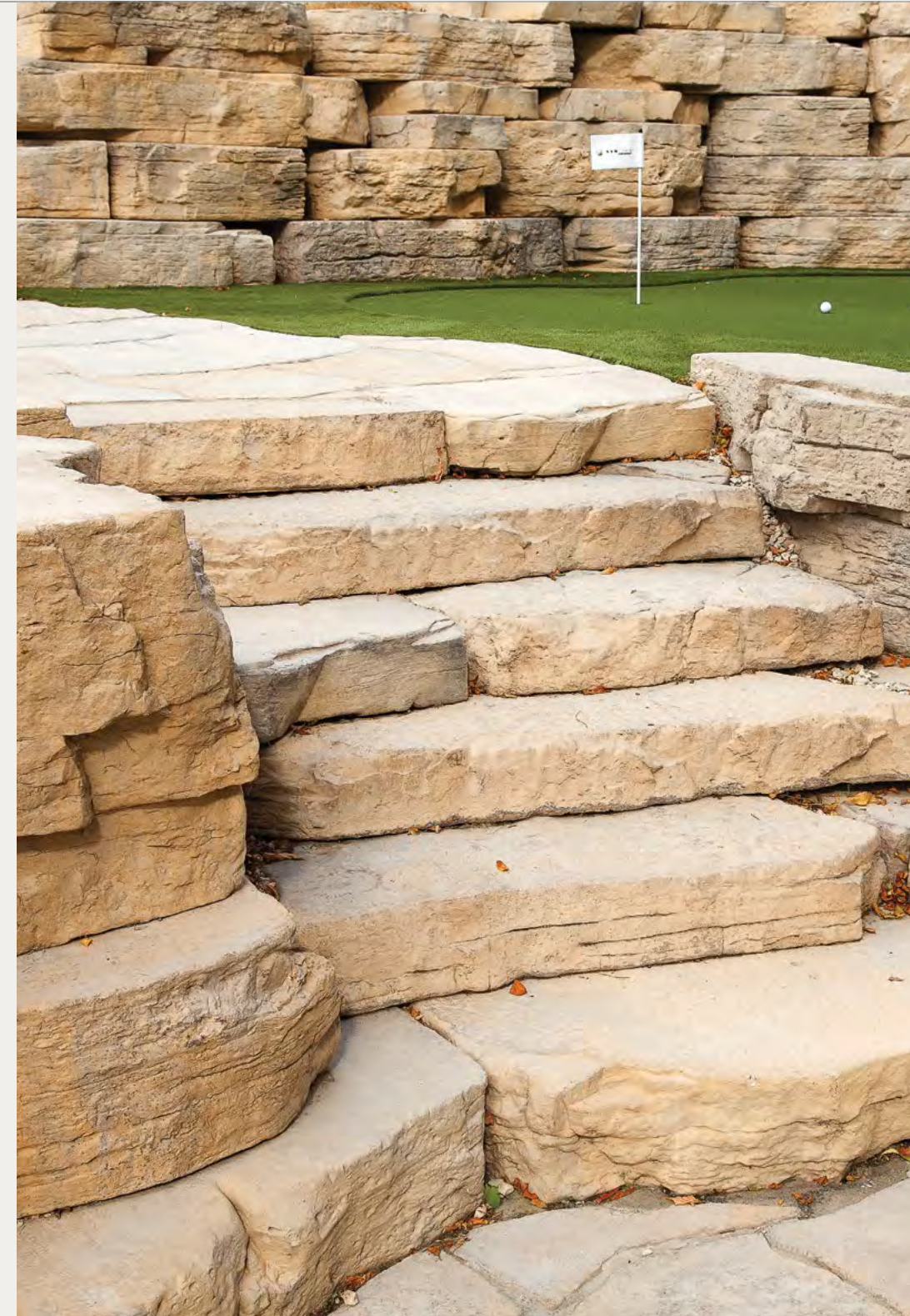
**6' length**  
1829 x 762 x 178 mm  
72 x 30 x 7 in



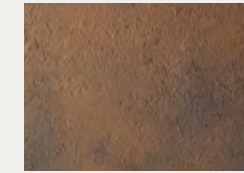
**4' length**  
1219 x 457 x 178 mm  
48 x 18 x 7 in



# Rosetta® Irregular Steps



## COLOURS



Copper Canyon



Fond du Lac



Northern Charcoal

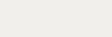


Pacific Grey

## SIZES (LxWxH)



**1372 x 559 x 178 mm**  
54 x 22 x 7 in



**1219 x 711 x 178 mm**  
48 x 28 x 7 in

**1524 x 610 x 178 mm**  
60 x 24 x 7 in

**1067 x 660 x 178 mm**  
42 x 26 x 7 in

**1067 x 432 x 178 mm**  
42 x 17 x 7 in

**1219 x 610 x 178 mm**  
48 x 24 x 7 in



All 6 sizes come in one pallet and are not sold individually.



# FINISHING TOUCHES

With all that goes into a landscape project, you want to know that the job was finished properly. Our finishing products will make sure your project stays vibrant today, and for years to follow.

## Edgers

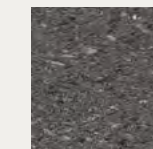


### I-Con Edger

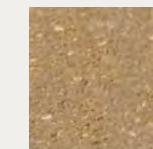
#### COLOURS



Natural



Charcoal



Desert Buff

#### SIZES (L x W x H)

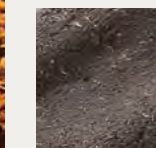


314 x 92 x 102 mm  
12.375 x 3.625 x 4 in



### Granite Edger

#### COLOURS



Charcoal

#### SIZES (L x W x H)



311 x 102 x 102 mm  
12.25 x 4 x 4 in



# Base & Footing



## Gator Base

Building a patio is hard work and one often overlooked piece is preparing the base.

For a light pedestrian patio, we recommend using 4–6 inches for your gravel base and one inch of sand. That’s a total excavation depth of 5–7 inches just for your base, never mind the paver height on top of that. However with using Gator base, you can place one inch of sand on your leveled native soil and place your Gator base on top, removing so much extra work.



# Finishing



## Polymeric Sand

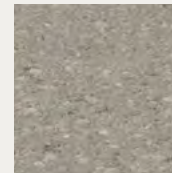
Polybind Complete G2 is made with a state-of-the-art manufacturing process. Specifically, calibrated sand is mixed with sophisticated intelligent polymers.

This new generation of Intelligent Polymers neutralizes haze and dust. The polymeric sand application is now dust free and haze free. No blower is needed and the intelligent polymeric sand requires only one watering. Polybind Complete G2 is recommended for a variety of uses including pool decks, patios, footpaths, driveways, parking spaces, pavements, etc. Available in Nevada Tan, Oxford Grey, Ivory White and Jet Black.



## Footing Pads

### COLOURS



Natural

### SIZES (LxWxH)



305 x 305 x 102 mm  
12 x 12 x 4 in



457 x 457 x 152 mm  
18 x 18 x 6 in



457 x 457 x 102 mm  
18 x 18 x 4 in



610 x 610 x 152 mm  
24 x 24 x 6 in



## Snap Edge®

Snap Edge’s unique “Snip & Flex” feature allows total freedom when designing your driveway or sidewalk. You can create unlimited curves and angles in minutes, ensuring an aesthetically pleasing and structurally superior project. This flexibility and strength has made Snap Edge® the premier edging choice of professionals.

# LANDSCAPE KITS

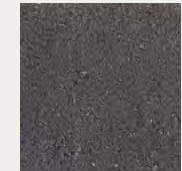
Landscape kits offer a cost-effective way to turn an outdoor space into something special without costly concrete work. Modular in design and timeless in appeal, Barkman Landscape Kits are an efficient way to enhance any space.

## Fireplaces



### Quarry Stone Fireplace

#### COLOURS



Sierra Grey

Charcoal Accent

#### SIZES (H x W x D)

2699 x 1397 x 1156 mm  
106.25 x 55 x 45.5 in

#### Quarry Stone Fireplace Wood Storage

##### SIZE (H x W x D)

889 x 1016 x 914 mm  
35 x 40 x 36 in



### Quarry Stone Compact Fireplace

#### COLOURS



Sierra Grey

Charcoal Accent

#### SIZES (H x W x D)

1981 x 1118 x 1016 mm  
78 x 44 x 40 in

#### Quarry Stone Compact Fireplace Wood Storage

##### SIZE (H x W x D)

965.2 x 813 x 711 mm  
38 x 32 x 28 in

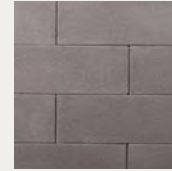


# Fire Pits



Architextures Fire Pit

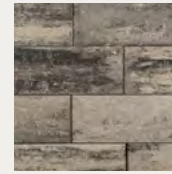
**COLOURS**



Ash



Flint



Sterling

**SIZES (H x W x D)**

400 x 1184 x 1184 (outside) mm  
15.75 x 47 x 47 (outside) in

400 x 614 x 614 (inside) mm  
15.75 x 24 x 24 (inside) in



# Fire Pits



Quarry Stone Fire Pit

**COLOURS**



Charcoal



Sierra Grey

**SIZES (H x W x D)**

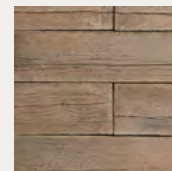
305 x 711 x 711 (inside) mm  
12 x 28 x 28 (inside) in

305 x 1118 x 1118 (outside) mm  
12 x 44 x 44 (outside) in

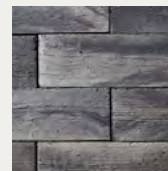


Bridgewood Fire Pit

**COLOURS**



Cedar Brown



Weathered Grey

**SIZES (H x W x D)**

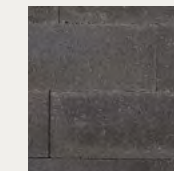
305 x 864 x 864 (inside) mm  
12 x 34 x 34 (inside) in

305 x 1270 x 1270 (outside) mm  
12 x 50 x 50 (outside) in

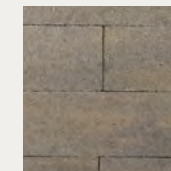


Smooth Quarry Stone Fire Pit

**COLOURS**



Charcoal



Sierra Grey

**SIZES (H x W x D)**

305 x 711 x 711 (inside) mm  
12 x 28 x 28 (inside) in

305 x 1118 x 1118 (outside) mm  
12 x 44 x 44 (outside) in

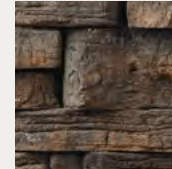


# Fire Pits



Rosetta® Belvedere Fire Pit

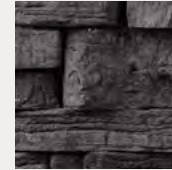
**COLOURS**



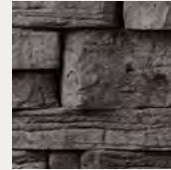
Copper Canyon



Fond du Lac



Northern Charcoal



Pacific Grey

**SIZES (H x D)**

381 x 940 (inside) mm  
 15 x 37 (inside) in  
 368.3 x (+/-) 73.2 (outside) mm  
 14.5 x (+/-) 58 (outside) in

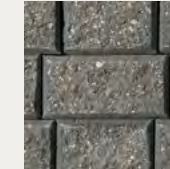


# Fire Pits



StackStone Fire Pit

**COLOURS**



Charcoal



Desert Buff



Sierra Grey

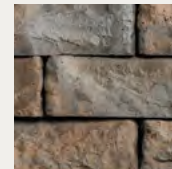
**SIZES (H x D)**

305 x 635 (inside) mm  
 12 x 25 (inside) in  
 305 x 1067 (outside) mm  
 12 x 42 (outside) in

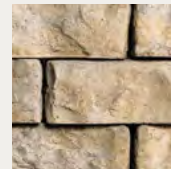


Rosetta® Dimensional Fire Pit

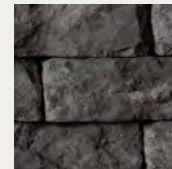
**COLOURS**



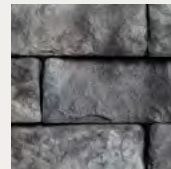
Copper Canyon



Fond du Lac



Northern Charcoal



Pacific Grey

**SIZES (H x W x D)**

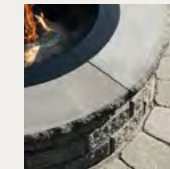
305 x 711 x 711 mm  
 12 x 28 x 28 in  
 305 x 1118 x 1118 (outside) mm  
 12 x 44 x 44 (outside) in



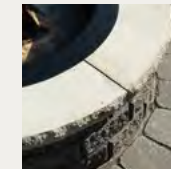
**NEW**

Stackstone Fire Pit Coping and Liner

**COLOURS**



Charcoal



Natural

**SIZES (H x D)**

**Coping (HxD)**  
 51 x 1118 (outside) mm  
 2 x 44 (outside) in  
 51 x 635 (inside) mm  
 2 x 25 (inside) in  
**Liner (HxD)**  
 356 x 762 mm  
 14 x 30 in

StackStone Fire Pit sold separately. The Coping for the fire pit is sold separately and can be purchased as a set of 6 pieces. The liner is sold separately.

# IMPORTANT INFORMATION

## Barkman Certified Accessories

A great hardscape begins with proper installation. That's why we recommend and supply Barkman certified accessories like Alliance polymeric sand products and Snap Edge to protect your Barkman investment. Use Snap Edge to create unlimited curves and angles in minutes, ensuring an aesthetically pleasing and structurally superior landscape project. For more details, download the *Barkman 2023 Specifications Guide* at [BarkmanConcrete.com](http://BarkmanConcrete.com).

## The Environment

At Barkman we are committed to being good stewards of the planet. Not only are our products excellent choices for people concerned about the environment, we employ environmental best practices throughout our manufacturing and operations whenever possible.

## Quality and Support Pledge

All Barkman products are guaranteed to meet or exceed the Canadian Standards Association (CSA) standards. We use only superior grade materials and employ stringent quality control measures throughout the manufacturing process to ensure a quality product every time. We also support our products with one of the industry's largest network of dealers and contractors. When you need us, we'll be there to help.

## Transferable Lifetime Warranty

Barkman Concrete warrants the structural integrity of our paving stone, slabs and retaining wall units. For homeowners, we offer a transferable lifetime warranty, where we will replace or repair at our option, without charge, any defective product installed and maintained to our guidelines under normal use. Commercial uses have specific warranties as well. For more information, please go to our website at [BarkmanConcrete.com/about/warranty](http://BarkmanConcrete.com/about/warranty).

## How to Order

Ordering Barkman products is as simple as calling or visiting one of our many dealers or contractors. Go to [BarkmanConcrete.com/find-a-dealer](http://BarkmanConcrete.com/find-a-dealer) for a full list of dealers and to find one in your area. Please be ready to specify product style and colour choice if required. If working directly with a contractor, please be sure to specify Barkman products to ensure Barkman quality. For commercial or municipal projects, go to [BarkmanConcrete.com/commercial-solutions](http://BarkmanConcrete.com/commercial-solutions) and contact our commercial product consultants. Note that all specifications in this product catalogue are nominal.

## Actual Colours May Vary

Every effort has been made to ensure accuracy in the colour representations found in this product catalogue. However, due to the natural characteristics of concrete, the manufacturing process and print reproduction, actual colours in the final product may vary from that shown.

## Installation and Project Estimation Support

Barkman provides easy-to-read installation guides that contain simple step-by-step instructions to help make installation a snap. Visit [BarkmanConcrete.com/resources](http://BarkmanConcrete.com/resources) to download a copy. Our website also features a project calculator that allows you to easily estimate the quantity of Barkman material and accessories you will need for your project.

Barkman Concrete Limited is a proud member of the Interlocking Concrete Pavement Institute.



# BASIC PAVER AND SLAB INSTALLATION

## What You Will Need

### Building Materials

- Bedding Material
- Base Material
- Joint Sand or Polymeric Sand
- Geotextile
- Paver Edge Restraint

### Guides

- Screeding tool: 8'-10' long (use straight 2x4 or carpenters level)
- Two Levelling Guides: 10' long, 1" outer diameter (pipe, electrical conduit, wood strips, etc.)
- Wooden Stakes or Metal Pegs
- String
- String level
- Carpenters Pencil

### Tools

- Hand Tamper
- Carpenters Level

- Trowel
- Rake
- Shovel
- Wheelbarrow
- Broom
- Rubber Mallet
- Tape Measure
- Safety Glasses

### Equipment (available to rent)

- Plate Compactor (min.-5000 lbf) or Roller Compactor
- Concrete Saw with a Diamond Blade
- Jumping Jack or Sheep's Foot Compactor

### Optional

- Gloves
- Knee Pads



## Base & Bedding Recommendations

	Bedding Material	Base Material	Advantages	Installation Notes
Traditional Base	Course Sand  <i>Alternate Names:</i> Concrete Sand (adhering to either ASTM C33 or CSA A23.1 FA1)	3/4" crusher run, well-graded gravel  <i>Alternate Names:</i> 3/4 down "A" Base	This base system has many years of successful use, and materials are readily available and often most economical.	
Free Draining Base	1/8" to 1/4" crushed clear/clean stone.  <i>Alternate Names:</i> 1/8", 1/4" chip or HPB (High Performance Bedding)	3/4" crushed clear/clean stone  <i>Alternate Names:</i> ASTM No.57 Fifty-Sevens	This base system is more resistant to frost heave and is not as easily damaged during installation by rain or foot traffic.	Geotextile is required to prevent soil particles from entering the clean base material.  Subsoil must be sloped to drain water away from any structures, and towards a suitable runoff location or below grade drainage system.  Final paver laying must not vary by more than 1/8".

## Design & Excavation

### 1. Mark out Your Design

a. Use your preferred method to mark out the outline of your design on the ground. String or spray paint are good options.

b. We recommend excavating at least 12" past your intended paver perimeter.

### 2. Set Elevations

a. Set stakes; mark the elevation and grade; set string lines to mark the top of finished patio. Slopes should be minimum of 1.5% or 1" for every 8'.

b. Grade stakes should be checked periodically to ensure they have not been disturbed.

### 3. Excavation (Table A)

**IMPORTANT: Before any digging, contact your local utility companies for the location and depth of pipes, cables and conduits.**

a. Calculate your Total Excavation Depth using the appropriate table for your jobsite based on the climate you live in.

Total Excavation Depth = Paver/slab thickness + 1" Bedding Sand + 4–8" Base Layer

b. Remove the dirt and sod below your string lines to match your Total Excavation Depth.

c. Compact the newly unearthed soil using the Jumping Jack or Sheep's Foot Compactor. Compaction of the unearthed soil is critical to the performance of your paving project. Do this prior to installing geotextile and/or base layer.

Table A

#### Dry Climate

Project	Paver/Slab Thickness	Bedding Material Layer	Minimum Base Thickness*
Patio/Sidewalk	x	1"	4"
Driveway	x	1"	6"

#### Cold Climate/Wet Soil

Project	Paver/Slab Thickness	Bedding Material Layer	Minimum Base Thickness*
Patio/Sidewalk	x	1"	6"
Driveway	x	1"	8"

Minimum Base Thickness is dependent on soil structure. Every job-site is unique, and your base thickness requirements may vary. When in doubt, consult a professional.

## Base Layer Compaction

### 4. Install Geotextile (optional)

a. Geotextile reduces the likelihood of premature settling and rutting. Use it in areas where soil remains saturated part of the year, where there is freeze and thaw, or over clay and moist, silty soils.

b. Ensure minimum downslope overlap of 12".

c. Cover the compacted soil including the vertical sides, with geotextile.

### 5. Spread and Compact Your Base Layer

**IMPORTANT: Do not install frozen base material or spread base material over frozen soil.**

**IMPORTANT: As you compact, check the base material moisture to ensure it is neither too wet or too dry. Clump some aggregate in your hand. It should retain its shape when dropped from 1 foot. If your aggregate is too dry, spray lightly with water.**

a. Spread a layer of base material across your surface. Reference the items on Table A to calculate your required base thickness.

**For 7000 lbf reversible plate compactors:** Spread and compact up to 4" at a time. The base material should extend 6 inches beyond your intended paver perimeter. Base should be compacted so that a 10 inch spike should take 3 hard strikes with a 2lb hammer to drive into the base.

**For 5,000 lbf reversible plate compactors:** Spread and compact up to 2" at a time. The base material should extend 6 inches beyond your intended paver perimeter. Base should be compacted so that a 10 inch spike should take 3 hard strikes with a 2lb hammer to drive into the base.

b. Continue adding layers and compacting until you are 2" + Paver height away from top of soil.

### 6. Screed and Compact Your Final Base Layer

a. Lay your levelling guides (1" pipe, electrical conduit or wood strips) onto your compacted base.

b. Set the proper height of your levelling guides. Ensure that the bottom of the screed bar ends up being 1" above the compacted base.

c. Fill the area with your final base layer. Slide the 2x4 board along the levelling guides to spread and level the final base layer within 3/8" of the final grade. Compact the final base layer, as usual.

### 7. Confirm Your Final Base Height (Diagram A)

a. Place a test paver or slab on your base layer. If the paver or slab is more than 1" below your final grade height, add more base material, screed and compact until the 1" threshold is reached.

## Edge Restraints & Bedding Material

### 8. Install Edge Restraint

**IMPORTANT: An edge restraint should be installed after the base layer is compacted and prior to bedding sand.**

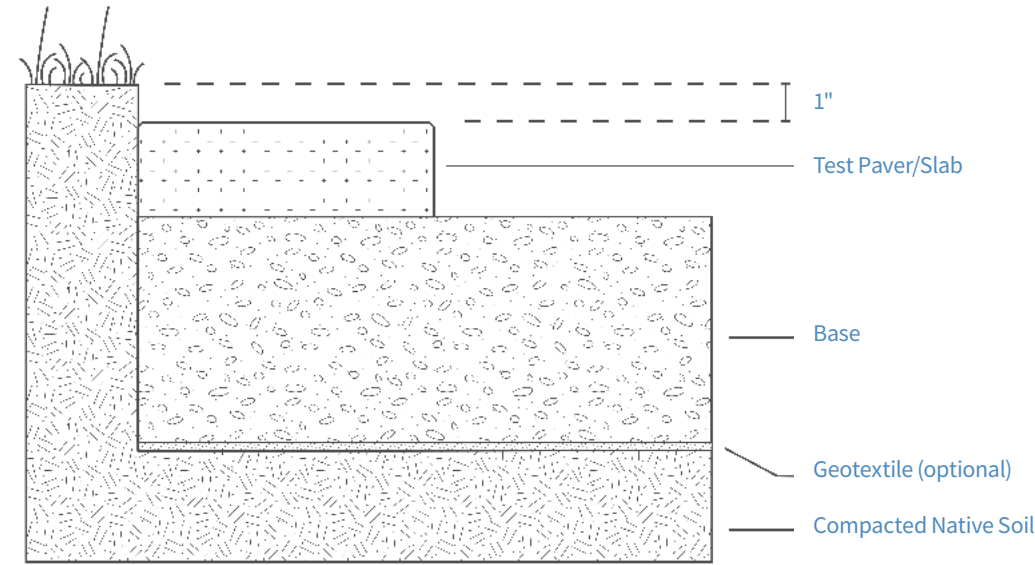


Diagram A

a. Install an edge restraint of your choice. We recommend Snap Edge. Carefully follow the manufacturer's instructions.

### 9. Bedding Material

**IMPORTANT: Do not use crushed limestone or stone dust as bedding sand. Do not install frozen or water saturated sand.**

a. Lay your levelling guides (1" pipe, electrical conduit or wood strips) onto your compacted base.

b. Set the proper height of your levelling guides. Ensure that the bottom of the screed bar ends up being 1" above the compacted base.

c. Fill the area between the leveling guides with bedding material. Bedding material will be spread and levelled to an uncompacted nominal 1". (25 mm) thickness.

d. Slide the 2x4 board along the levelling guides to spread and level the bedding material.

## Installing Pavers & Slabs

### 10. Lay Down Pavers

**IMPORTANT: Do not use your house or building as reference line.**

a. Use string lines as a guide for maintaining straight joint lines.

b. Pull and mix pavers or slabs from different bundles for better colour blending.

c. Cut or split pavers or slabs using a concrete saw or paver splitter. Use proper dust collection or a respirator when running a saw.

d. When installing pavers or slabs, ensure that each block is in contact with previously placed block as you place it. Avoid placing a paver or slab on the bedding material and then pushing it into place.

## Compacting Pavers & Slabs

### 11. Compact Your Pavers or Slabs

**IMPORTANT: Always use a Paver Saver Mat when using a plate compactor to avoid damaging your pavers.**

a. Plate Compactor (minimum 5000 lbf): Used for pavers only.

Roller Compactor: Used for pavers or slabs

b. After placing your pavers or slabs, select the appropriate compactor for your surface. Compact with two passes at right angles made across the surface to set the pavers or slabs in the bedding sand and force the sand into the joints.

## Joint Sand or Polymeric Sand

Finish your paver or slab installation with either joint sand or polymeric sand.

### 12a. Option 1: Install Polymeric Sand

**IMPORTANT: For joint sand installation refer to page 7.**

a. Carefully follow the manufacturer's instructions. Each manufacturer has specific installation instructions regarding application, wetting and drying

b. Final surface height variation should not exceed 3/8" from final elevation.

c. Refer to [icpi.org/barkmanconcrete](http://icpi.org/barkmanconcrete) for detailed Barkman ICPI technical specifications.

### 12b. Option 2: Install Joint Sand

a. Sweep dry joint sand into the spaces between your finished pavers. Joint sand can be finer than bedding sand.

b. Compact the surface.

**IMPORTANT: Always use a Paver Saver Mat when using a plate compactor to avoid damaging your pavers.**

c. Plate Compactor (minimum 5000 lbf): Used for pavers only.

d. Roller Compactor: Used for pavers or slabs.

e. Ensure joints are full. Apply more sand if necessary and make take two or three more passes with compactor.

# BASIC WALL INSTALLATION

## Equipment Needed

- Broom, chisel, concrete saw, guide string, gloves, rubber mallet, knee pads, pencil, rake, level, shovel, stakes, tape measure, safety glasses, trowel, wheelbarrow

## Getting Started

- Layout design on paper
- Estimate required amount of Barkman product, well-graded granular base, top soil, filter cloth and masonry adhesive needed (see BarkmanConcrete.com for product calculator)

## Ground Preparation

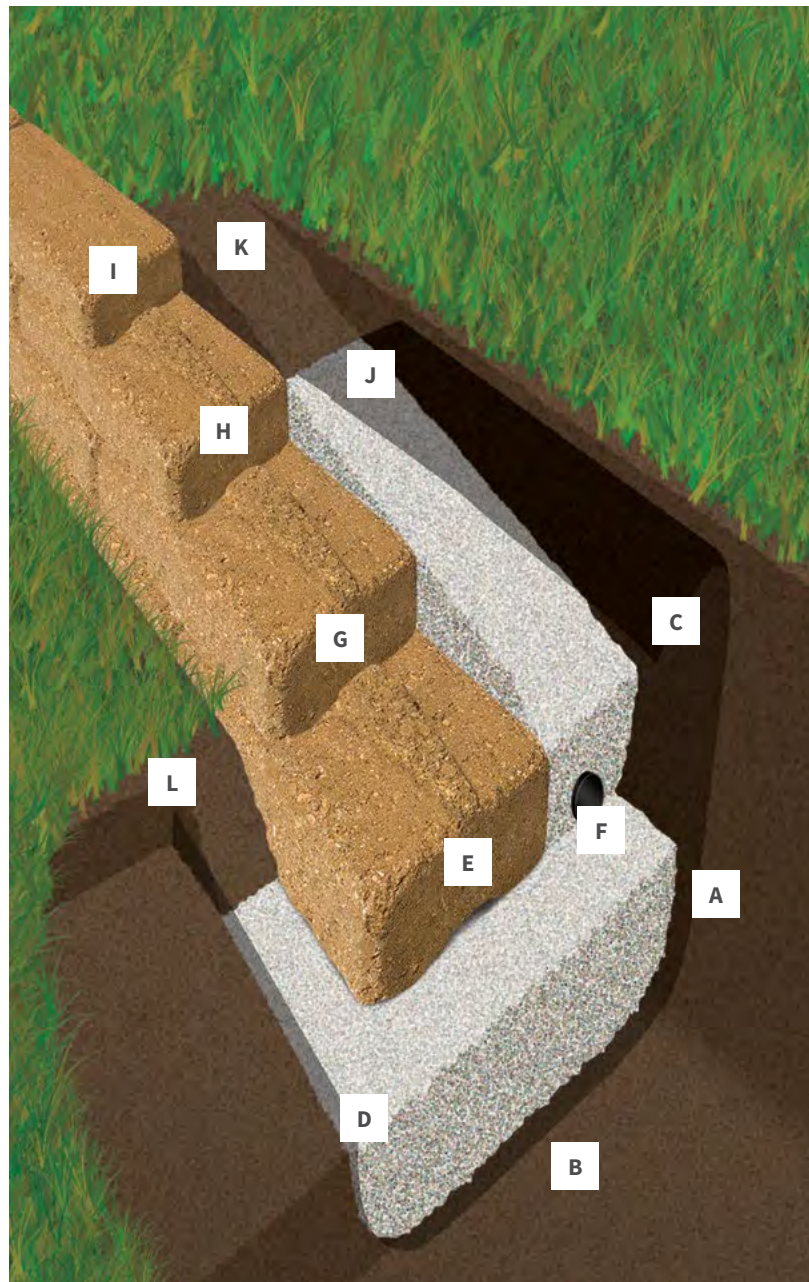
- Excavate a trench (A) 203–305 mm/8–12 in. deep and 406–610 mm/16–24 in. wide along the entire length of the wall (larger walls require larger trenches – see specific product installation guides for exact details)
- Compact base soil to ensure stability (B)
- Lay filter cloth (C) under granular base and against the exposed face of the excavation
- Spread 102–152 mm/4–6 in. layer of granular base (D), compact
- Position leveling string to mark location of the first course

## Installing Units

- Lay first course (E) on prepared base (at least 51 mm/2 in. below grade), keep each unit level front to back and side to side
- Place drain tile (F) on prepared base, behind the first course
- Sweep top of first course, place next offsetting course (G), back fill with granular rock on top of filter cloth Repeat offsetting courses (H) and back fill until desired height is reached
- Secure last course (I) with adhesive and apply pressure to secure

## Finishing

- 152 mm/6 in. from top of wall, pull filter cloth back towards the wall, on top of back fill (J)
- Fill remaining space with top soil (K) (cover the pulled back filter cloth) to make ground level with wall
- Fill remaining trench space in front of the wall with top soil (L) sloping away from the wall



# OUR LOCATIONS

## Steinbach Office and Distribution Centre

152 Brandt Street  
Steinbach, MB  
R5G 0R2  
T 204 326 3445  
1 800 461 2278  
F 204 326 5915  
Steinbach@BarkmanConcrete.com

## Winnipeg Office and Distribution Centre

901 Gateway Road  
Winnipeg, MB  
R2K 3L1  
T 204 667 3310  
1 800 342 2879  
F 204 663 4854  
Winnipeg@BarkmanConcrete.com

## Calgary Office and Distribution Centre

813 McCool Street  
Box 1136,  
Crossfield, AB  
T0M 0S0  
T 403 946 4630  
F 403 946 4631  
Calgary@BarkmanConcrete.com

## Vancouver Office

Port Moody, BC  
T 1 800 461 2278 F 604 949 0321  
Vancouver@BarkmanConcrete.com

## Merritt Office and Distribution Centre

1132 Middy Valley Road  
Merritt, BC  
V1K 1M9  
T 778 661 1408

## Saskatoon Distribution Centre

3550 Idylwyld Drive North,  
Saskatoon, SK  
S7L 6G3  
T 1 800 461 2278



barkman™

BarkmanConcrete.com



Made in Canada