

The alternative to a fixed-loose flange!

SEALING INSERTS



KRASO® Foil Clamping Flange Type FKF When “tight” means simply tight - sealing solutions for the “black tank”

- + Designers and building contractors face numerous **structural-physical conditions**. The **protection of below-ground structural elements against moisture and water** is regulated by **DIN 18533**, stating different loads and provisions regarding the waterproofing of buildings.
- + For the **sealing of utility lines** in regard to buildings with exterior sealing (“black tank”) we offer our **KRASO® Casing Type FL with fixed-loose flange construction according to DIN 18533 W1-E or W2-E**.
- + According to **DIN 18533** the **KRASO® Foil Clamping Flange Type FKF** is an effective alternative for the integration of media lines into the sealing of larger areas!

Your advantages

- + **Cost-effective, saves time and money**
- + Test-certificate from material testing institute in NRW: **water pressure tight up to 2,5 bar**
- + We can **individually adjust the type of sealing sheets or foils**
- + **Noticeable lower weight** than a fixed-loose flange construction, for an easier installation, helps to avoid installation errors
- + Suitable for every external diameter of media lines and all kinds of materials
- + Metal components made of non-corrosive stainless steel V2A
- + For new building and rehabilitation!



KRASO® Foil Clamping Flange Type FKF
Here there is an installation video
(just scan in the QR-Code!)

The alternative to a
fixed-loose flange!



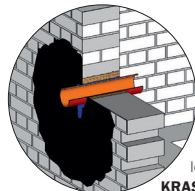
KRASO® Foil Clamping Flange Type FKF

The revolution in the integration of media lines into the sealing of larger areas

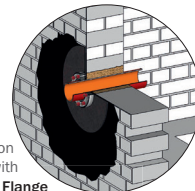
- + With our innovative **KRASO® Foil Clamping Flange Type FKF** a foil flange can be fastened water pressure tight to every pipe or cable, which is even and stable!
- + Suitable for all external diameters of media lines and for all materials!
- + We can individually adjust the type of sealing sheets or foils:
e.g. PVC, EPDM, FPO, RESITRIX®, PP, PE, KRASO®-Fol, PYE-PV 200 S5 etc.
- + Torque Control Nut **KRASO® DKM**: integrated torque limiter - no torque wrench required!
- + Metal components made of non-corrosive stainless steel V2A.
- + For new building and rehabilitation! Various designs for almost every situation!
- + Simple and fast mounting: installation errors are almost impossible!
- + MPA-tested: water pressure tight up to 2,5 bar! A really simple and tight solution for the sealing of larger areas!



installation situation
KRASO® Foil Clamping Flange Type FKF - in the core drilling -

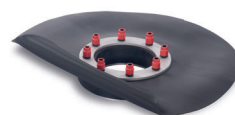


installation situation
left without, right with
KRASO® Foil Clamping Flange Type FKF - in front of the wall -



KRASO® Foil Clamping Flange Type FKF - in front of the wall -

KRASO® Foil Clamping Flange Type FKF - in front of the wall - split -



KRASO® Foil Clamping Flange Type FKF - in the core drilling -



KRASO® Foil Clamping Flange Type FKF - in the core drilling - split -



- included in the delivery
- **KRASO® PU 50** - high-quality sealant
 - pressure roller
 - serrated spatula
 - pencil for marking out

KRASO® Foil Clamping Flange Type FKF **LG1**

for the sealing of media of all kinds of materials in front of a wall or in the core drilling, with foil flange 1,2 mm, according DIN 16937, oil- and bitumen resistant, surrounding approx. 15 cm, 30 mm seal, against pressing water up to 2,5 bar, Torque Control Nut **KRASO® DKM**, non-corrosive stainless steel V2A

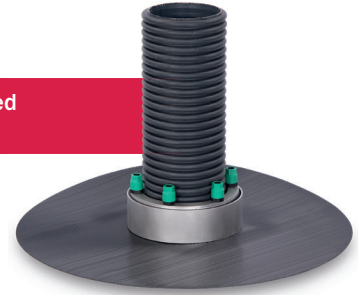
External diameter or core hole in mm	max. external diameter pipe or cable from ... to ... in mm	KRASO® Foil Clamping Flange Type FKF - in front of the wall -	KRASO® Foil Clamping Flange Type FKF - in front of the wall - split -	KRASO® Foil Clamping Flange Type FKF - in the core drilling -	KRASO® Foil Clamping Flange Type FKF - in the core drilling - split -
80	0 - 40	213 €	288 €	213 €	234 €
100	0 - 63	224 €	322 €	224 €	247 €
125	0 - 80	257 €	366 €	257 €	283 €
150	0 - 110	312 €	433 €	312 €	344 €
200	0 - 160	390 €	545 €	390 €	428 €
250	0 - 200	532 €	760 €	532 €	584 €
300	0 - 250	731 €	992 €	731 €	804 €

Scope of supply: **KRASO® Foil Clamping Flange Type FKF**, adhesive and sealant **KRASO® PU 50**, serrated spatula, pressure roller and pencil

Further sizes and diameters available on request! Also available with other sealing sheets!



Specially for ribbed media pipes



KRASO® Foil Clamping Flange Type FKF DD/GR **LG 1**

for the sealing of media of all kinds of materials in front of a wall or in the core drilling, with foil flange 1,2 mm, according DIN 16937, oil- and bitumen resistant, surrounding approx. 15 cm, 40 mm specially soft seal, central pressure distribution plate for even pressure distribution with corrugated media pipes, against pressing water up to 1,0 bar, Torque Control Nut **KRASO® DKM**, non-corrosive stainless steel V2A

External diameter FKF or core hole in mm	max. external diameter pipe or cable from ... to ... in mm	KRASO® Foil Clamping Flange Type FKF DD/GR - in front of the wall -	KRASO® Foil Clamping Flange Type FKF DD/GR - in front of the wall - - split -	KRASO® Foil Clamping Flange Type FKF DD/GR - in the core drilling -	KRASO® Foil Clamping Flange Type FKF DD/GR - in the core drilling - - split -
100	0 - 63	302 €	414 €	302 €	321 €
125	0 - 80	347 €	477 €	347 €	367 €
150	0 - 110	421 €	578 €	421 €	444 €
200	0 - 160	526 €	723 €	526 €	554 €
250	0 - 200 ¹	717 €	986 €	717 €	809 €
300	0 - 250 ¹	987 €	1.356 €	987 €	1.066 €

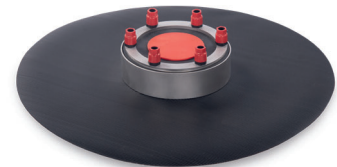
¹ From 200 mm external diameter pipe or cable **KRASO®** Foil Clamping Flange Type FKF DD/GR with 60 mm seal

Scope of supply: **KRASO®** Foil Clamping Flange Type FKF DD/GR, adhesive and sealant **KRASO®** PU 50, serrated spatula, pressure roller and pencil
Further sizes and diameters available on request! Also available with other sealing sheets!



KRASO® Foil Clamping Flange Type FKF Universal **LG 1**

for the sealing of media of all kinds of materials in front of a wall, with foil flange 1,2 mm, according DIN 16937, oil- and bitumen resistant, surrounding approx. 15 cm, 40 mm seal, against pressing water up to 1,5 bar, Torque Control Nut **KRASO® DKM**, non-corrosive stainless steel V2A



KRASO® Foil Clamping Flange
Type FKF Universal

External diameter FKF	KRASO® Foil Clamping Flange Type FKF Universal 100	KRASO® Foil Clamping Flange Type FKF Universal 150	KRASO® Foil Clamping Flange Type FKF Universal 200
A sealing insert for all pipes or cables listed in the table on the right (in mm)	stepless onion ring technology 18 - 65 mm or blind	110 (DN 110 KG-pipe) (DN 110 SML-pipe)	160 (DN 160 KG-pipe) (DN 160 SML-pipe)
		90 (DN 80 steel pipe, PE-pipe)	135 (DN 125 SML-pipe)
		75 (DN 70 HT-pipe)	125 (DN 125 KG-pipe)
		0	110 (DN 110 KG-pipe) (DN 110 SML-pipe)
			0
KRASO® Foil Clamping Flange Type FKF Universal	197 €	269 €	329 €

Scope of supply: **KRASO®** Foil Clamping Flange Type FKF Universal, adhesive and sealant **KRASO®** PU 50, serrated spatula, pressure roller and pencil
Further sizes and diameters available on request! Also available with other sealing sheets!

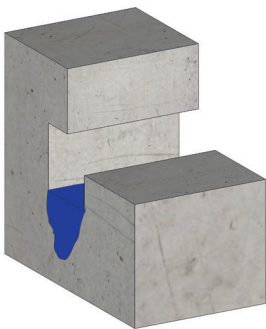


KRASO® Plastic Flange Plate Type KFP - split -
Here there is an installation video
(just scan in the QR-Code!)

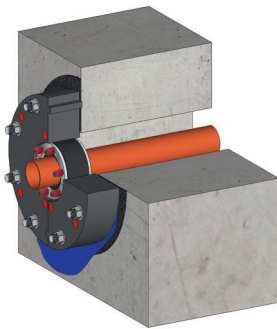


KRASO® Plastic Flange Plate Type KFP - split - A proven solution thought out again

- + Like a “split casing“: the flange plate made of high-strength special plastic can be installed retrospectively.
- + **No core drilling:** media lines do not need to be separated for installation!
- + Installation in front of a wall made of waterproof concrete (WU) or as KRASO® Type KFP with foil flange in front of a wall with sealing of larger areas.
- + Due to the low weight easy installation by just one person!
- + Very latest CNC production technology: **absolute dimensional compliance** - no tolerances such as are usual with solutions involving metal.
- + **Tongue and groove system:** the two halves of the plastic flange plate automatically pull together with a 100% accurate fit. **Installation errors are thus avoided through this innovation!**
- + Subsequent sealing of the media lines in the plastic flange plate using **KRASO® Sealing Insert**. **Also available as split version!**



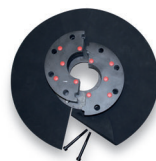
Installation situation without
KRASO® Plastic Flange Plate
Type KFP - split -



Installation situation with
KRASO® Plastic Flange Plate
Type KFP - split -



KRASO® Plastic Flange Plate
Type KFP - split -



KRASO® Plastic Flange Plate
Type KFP - Foil Flange - split -

KRASO® Plastic Flange Plate Type KFP - split - **LG 1**

for installation of pipes or cables using KRASO® Sealing Insert (not included in the delivery), core drillings are not required, a simple opening or recess in the wall is enough, against pressing water up to 3,0 bar, plate made of 60 mm thick, high-strength special plastic, EPDM flat seal, ID = Internal Diameter

Type / Item	KRASO® Type KFP - split - • KRASO® Type KFP - Foil Flange - split -						
Internal Diameter ID	80	100	125	150	200	250	300
max. external diameter pipe or cable from ... to ... in mm	0 - 55	0 - 75	0 - 100	0 - 125	0 - 175	0 - 225	0 - 275
Plate size approx. in mm	d = 240	d = 260	d = 285	d = 310	d = 360	d = 410	d = 460
KRASO® Plastic Flange Plate Type KFP - split -	328 €	338 €	364 €	381 €	441 €	502 €	553 €
KRASO® Plastic Flange Plate Type KFP - Foil Flange - split -	410 €	423 €	456 €	476 €	552 €	628 €	691 €

Scope of supply: KRASO® Plastic Flange Plate Type KFP - split - or KRASO® Plastic Flange Plate Type KFP - Foil Flange - split -, EPDM flat seal to the component and fixing material, adhesive and sealant KRASO® PU 50

Further sizes and diameters available on request!