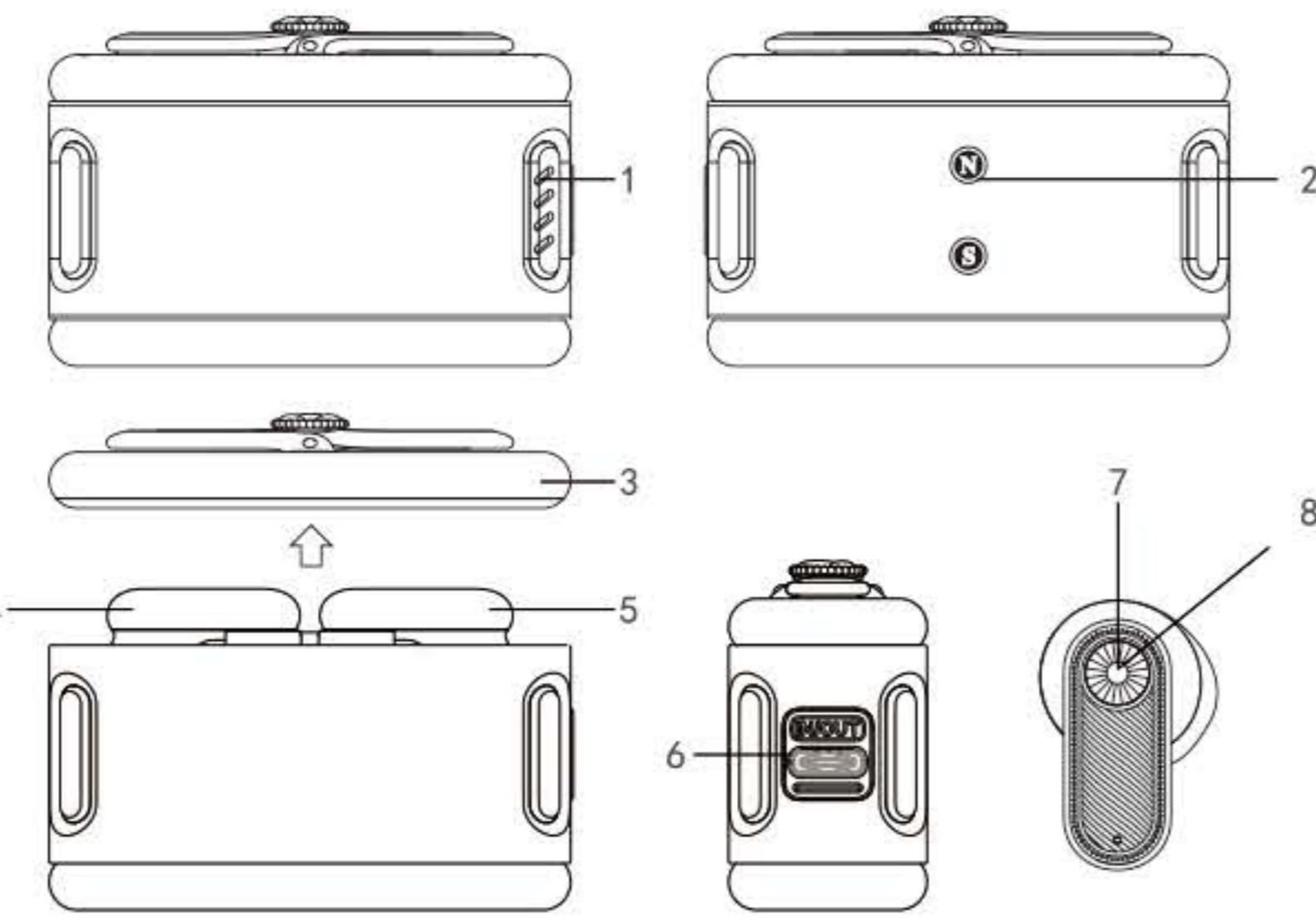




无线蓝牙耳机 WIRELESS EARPHONES Q8

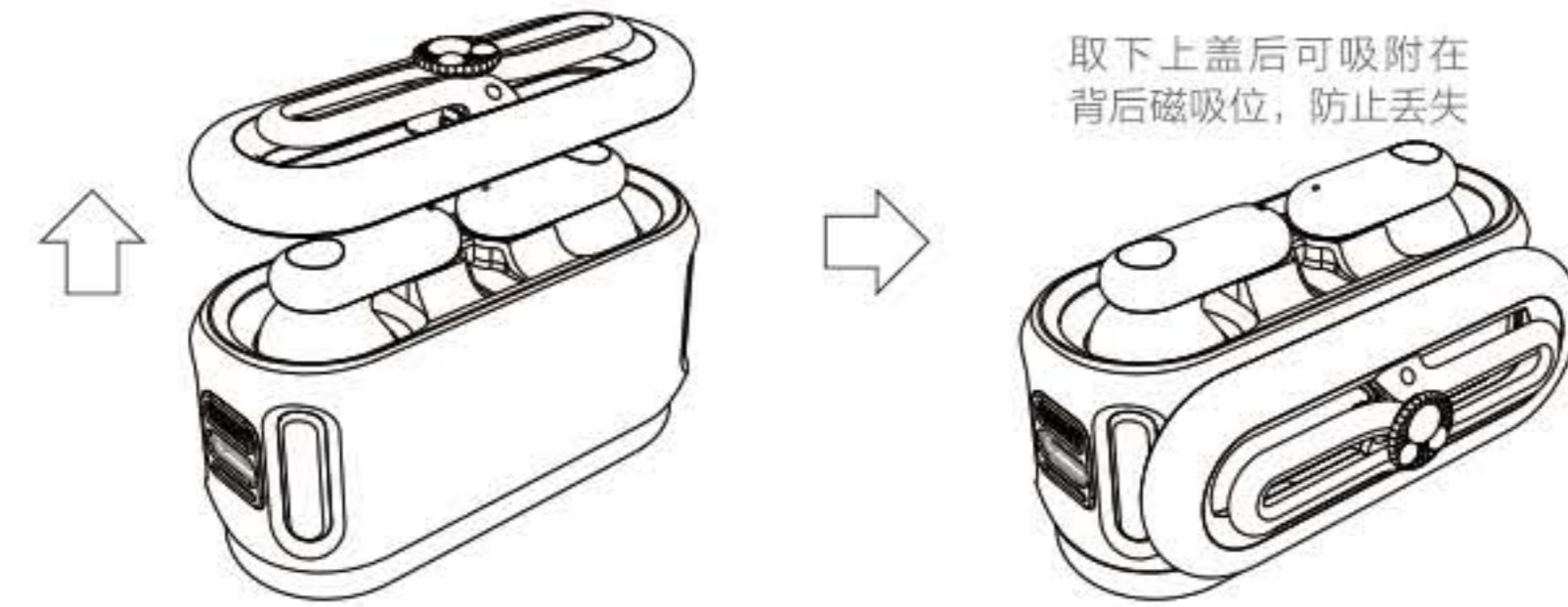
使用说明书 ©Disney

外观布局



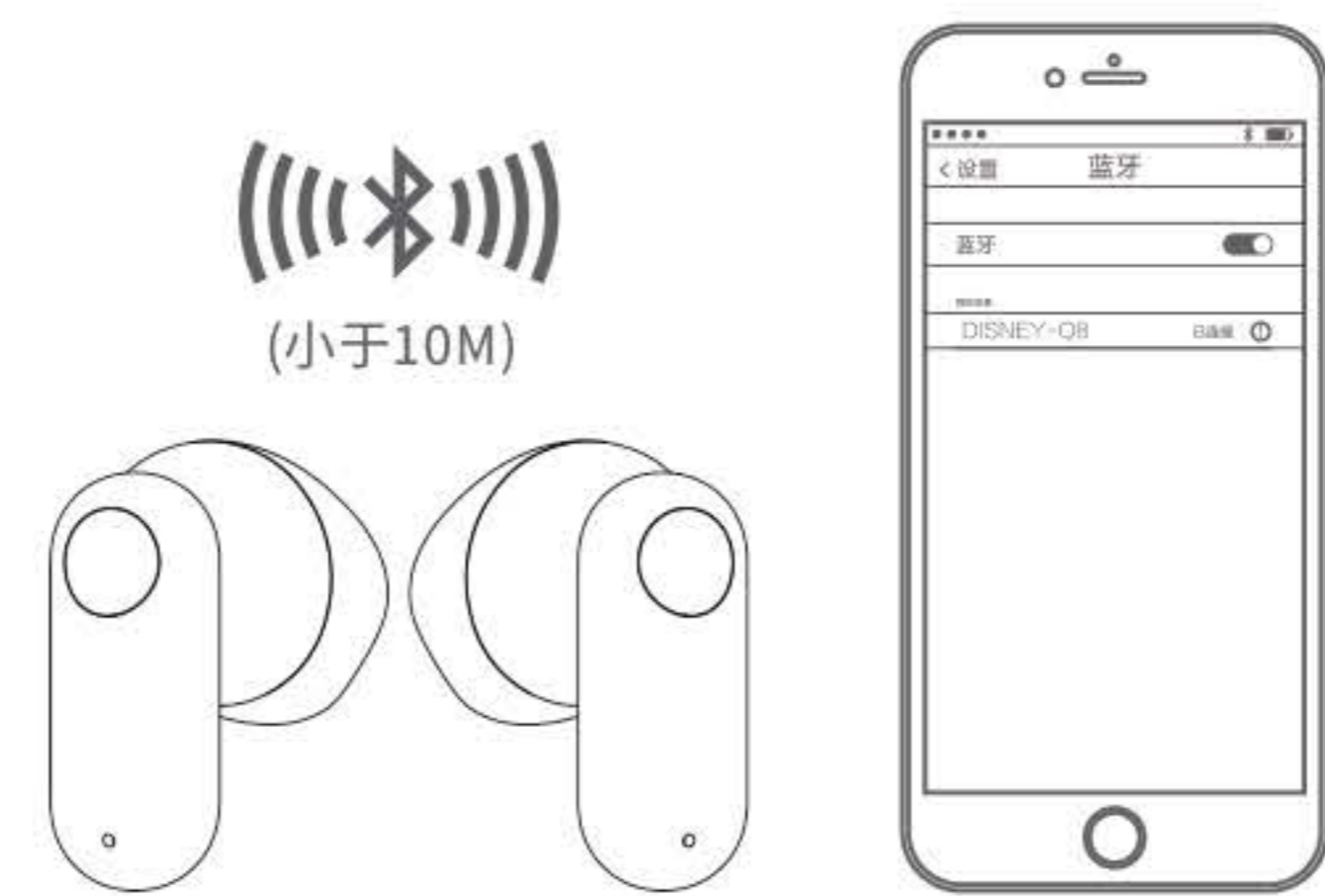
- 1.电量指示灯: 从下到上, 依次代表25%, 50%, 75%, 100%
- 2.上盖磁吸位: 打开上盖时给上盖提供磁吸位置, 便于手呐
- 3.耳机上盖: 分离式磁吸设计。
- 4.右耳机 5.左耳机
- 6.充电口: type-c充电口, 可进可出, 可供手机应急充电
- 7.耳机指示灯: 闪烁(蓝牙等待配对), 灯灭(连接成功)
- 8.触摸按键: 单击(播放/暂停, 来电接听/挂断, 来电时, 长按拒接)
双击(下一曲)
三击(主机+/副机-音量)

上盖打开收纳方式



蓝牙连接示意图

- 1.耳机和手机在没有障碍物的情况下, 最大有效连接距离不超过10m。
- 2.拿出耳机, 耳机指示灯闪烁。表示耳机蓝牙处于待连接状态。
- 3.在手机上启动“搜索蓝牙”功能, 请参考手机说明书以正确操作。
- 4.在手机蓝牙搜索列表中选择并点击“DISNEY-Q8”



注: 本机与手机或者其他蓝牙电子设备连接时, 使用无线电信号。但此种连接并非一切场合下都稳定可靠。因此, 如遇紧急情况, 请勿完全依赖本机进行通讯。

规格参数

产品型号	Q8
蓝牙版本	5.3
有效距离	≤ 10m
电池规格	1200mAh锂电池
支持音频协议	A2DP AVR CP
充电功能	支持USB充电 / DC 5V适配器
音乐连续播放时间	约3H (70%音量测试)
额定功率	5mW
喇叭阻抗	32Ω ± 15%
频率响应	20hz-20khz
工作温度	-10℃-45℃

注: 此说明书中的各项数据来源于实验室测试, 实际使用可能会略

亮灯情况

指示灯颜色	工作状态
耳机灯光快速闪烁	等待配对
耳机灯灭	连接成功

产品充电

给本机充电: 使用TYPE-C充电线, 将本产品连接到电脑的USB接口, 也可以使用5V-1A电源适配器进行充电, 若需要快速充电, 请使用5V-1A电源适配器。

给设备充电: 使用TYPE-C充电线, 可以给手机设备应急充电。



安全性说明

1. 应防止日晒雨淋, 防止剧烈震动、冲击或挤压。
2. 应存储于环境温度-10℃~45℃, 相对湿度不大于75%的室内, 应避免与腐蚀性物质接触, 远离火源。
3. 本产品不可当做普通垃圾丢弃, 必须将此等废弃设备携至适当的电池回收点处理。
4. 材料为无铅环保材料。
5. 本产品不适合14岁以下儿童单独使用, 须在成人监护下使用。
6. 本产品符合电子标准GB8898报告, 编号R0317120224S。

注: 如因消费者违反上述警告造成人身及财产损失将自行承担一切后果, 本公司将不产生任何法律责任。

包装清单

蓝牙耳机x1 充电线x1 说明书X1 合格证X1 品牌标签X1

温馨提示

*请仔细阅读以下内容再使用本产品, 错误的使用方法或者不兼容的设备有可能损坏您的产品, 或导致本品受损;
*请不要用尖锐物体刮擦本产品外壳表面。请勿抛掷、摇晃、强压或试图拆卸产品;
*长期不使用时, 请确保3个月内至少为本产品充满电一次;
*请勿使用化学物质或者强效清洁剂清洁本产品;
*在给您的数码产品充电工作完成后, 请及时拔出连接线, 以免连接线消耗本产品的部分电量。

注意事项

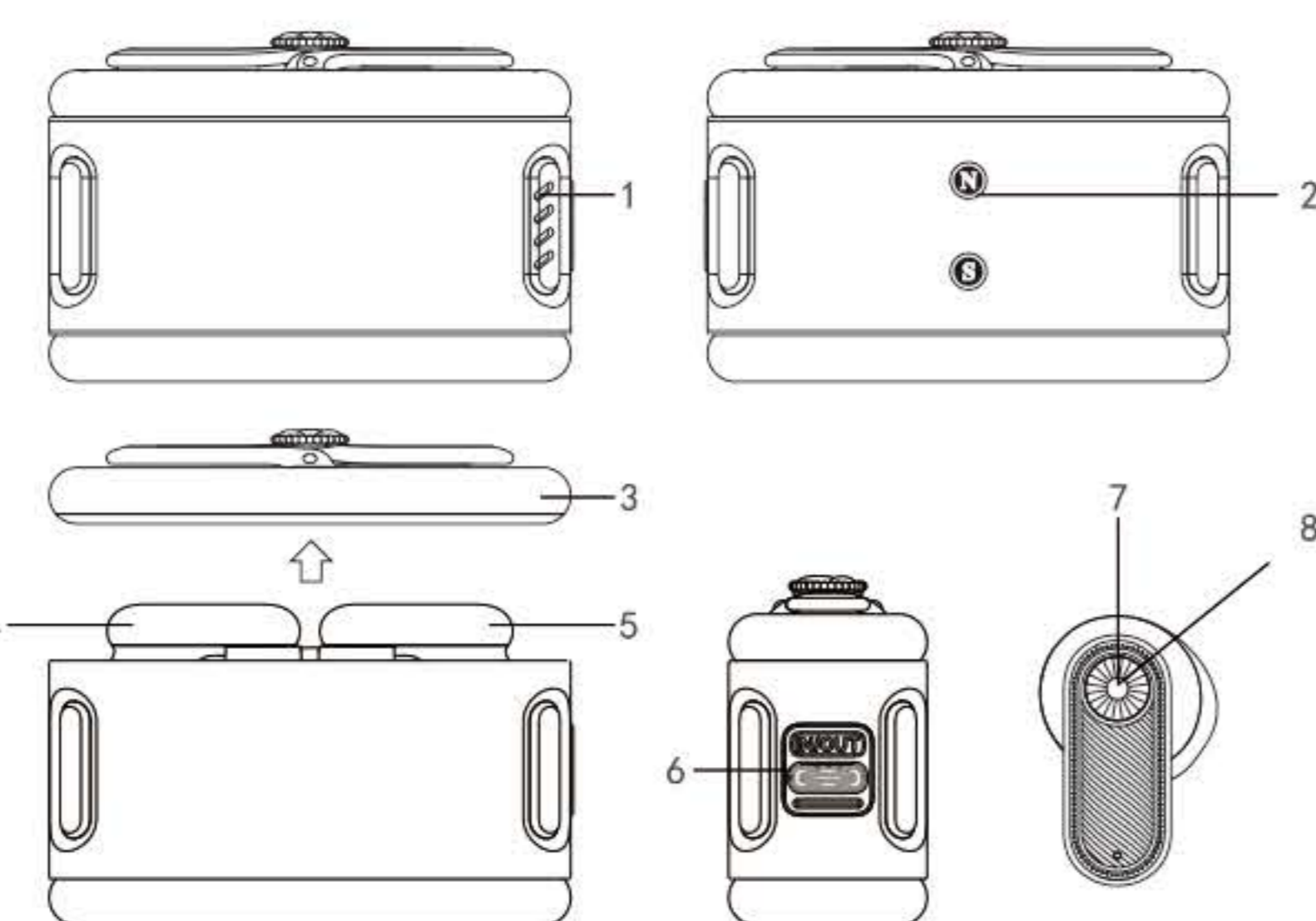
*使用时务必认真核对被充电产品与本产品的电压是否兼容;
*请勿置于水中、火中、过高或过低温度环境中;
*请勿给儿童接触或玩耍此产品;
*请勿强拆、改装产品以免损坏产品的保护装置, 导致电池发热, 起火或爆炸;
*产品在使用、充电或存放时, 如出现异常气味、温度过高(正常使用会产生热量但不烫手), 或形状改变等异常现象应当立即停止使用并与经销商联系;
*用户不正确使用或不正确放置本产品导致本产品寿命缩短甚至损坏而带来的责任, 不属于保修责任或厂家责任, 敬请谅解。



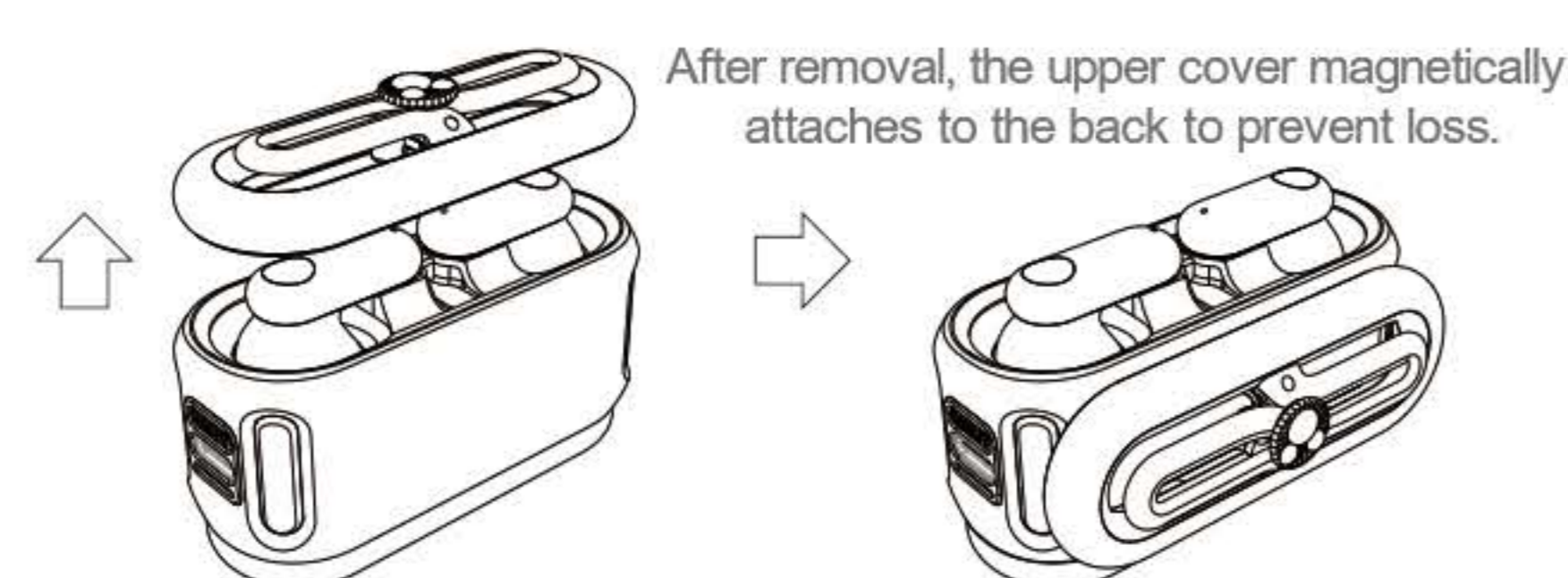
无线蓝牙耳机 WIRELESS EARPHONES Q8

INSTRUCTIONS MANUAL ©Disney

Exterior Layout

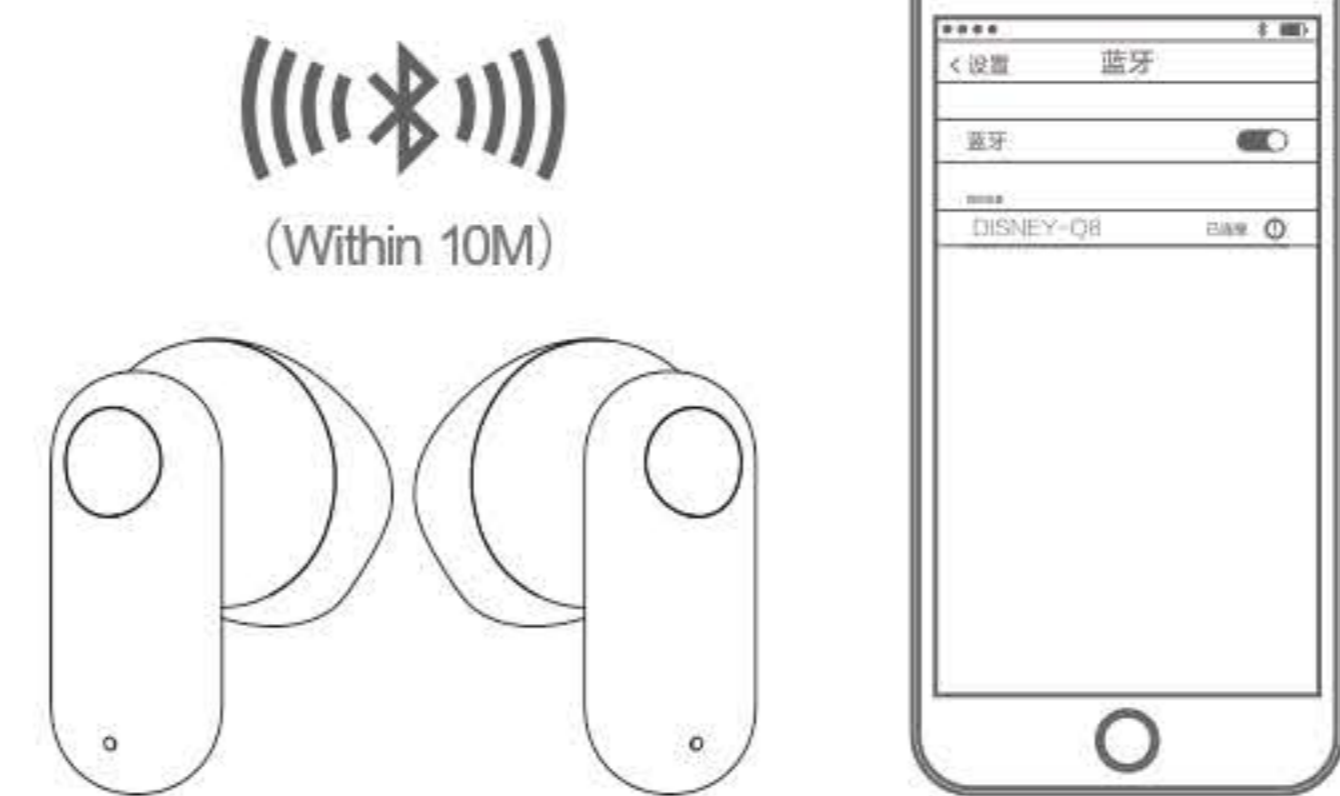


1. Battery Indicator Lights: Represent 25%, 50%, 75%, 100% battery levels.
2. Upper Cover Magnetic Attraction: Facilitates easy opening and closing.
3. Earphone Upper Cover: Features detachable magnetic design.
4. Right Earphone 5. Left Earphone
6. Charging Port: Type-C, bidirectional for emergency phone charging.
7. Earphone Indicator Light: Blinking (Bluetooth pairing), Off (connected).
8. Touch Controls:
Single Tap (Play/Pause, Answer/End Calls, Long press to reject).
Double Tap (Next track).
Triple Tap (Volume adjustment).



Bluetooth Connection Illustration

1. The maximum effective connection distance between the earphones and the phone, without obstacles, does not exceed 10 meters.
2. When you take out the earphones, the indicator light will blink, indicating that the earphones' Bluetooth is in pairing mode.
3. Enable the "Search for Bluetooth" function on your phone, please refer to the phone's manual for proper operation.
4. Select and click "DISNEY-Q8" from the Bluetooth search list on your phone.



Note: When connecting this device to a phone or other Bluetooth electronic devices, it utilizes wireless radio signals. However, this type of connection is not always stable and reliable in all situations. Therefore, in case of emergencies, do not rely solely on this device for communication.

Specifications

Product Model	Q8
Bluetooth Version	5.3
Effective Range	≤ 10m
Battery Specifications	1200mAh Lithium Battery
Supported Audio Protocols	A2DP AVR CP
Charging Function	Supports USB Charging / DC 5V Adapter
Music Playback Time	About 3 hours (tested at 70% volume)
Rated Power	5mW
Speaker Impedance	32Ω ± 15%
Frequency Response	20hz - 20khz
Operating Temperature	-10℃-45℃

Note: The data provided in this manual is based on laboratory testing and may have slight discrepancies in real-world usage.

Lighting Conditions

Indicator Light Colors	Operational Status
Earphone light flashing rapidly	Pairing mode
Earphone light off	Connected successfully

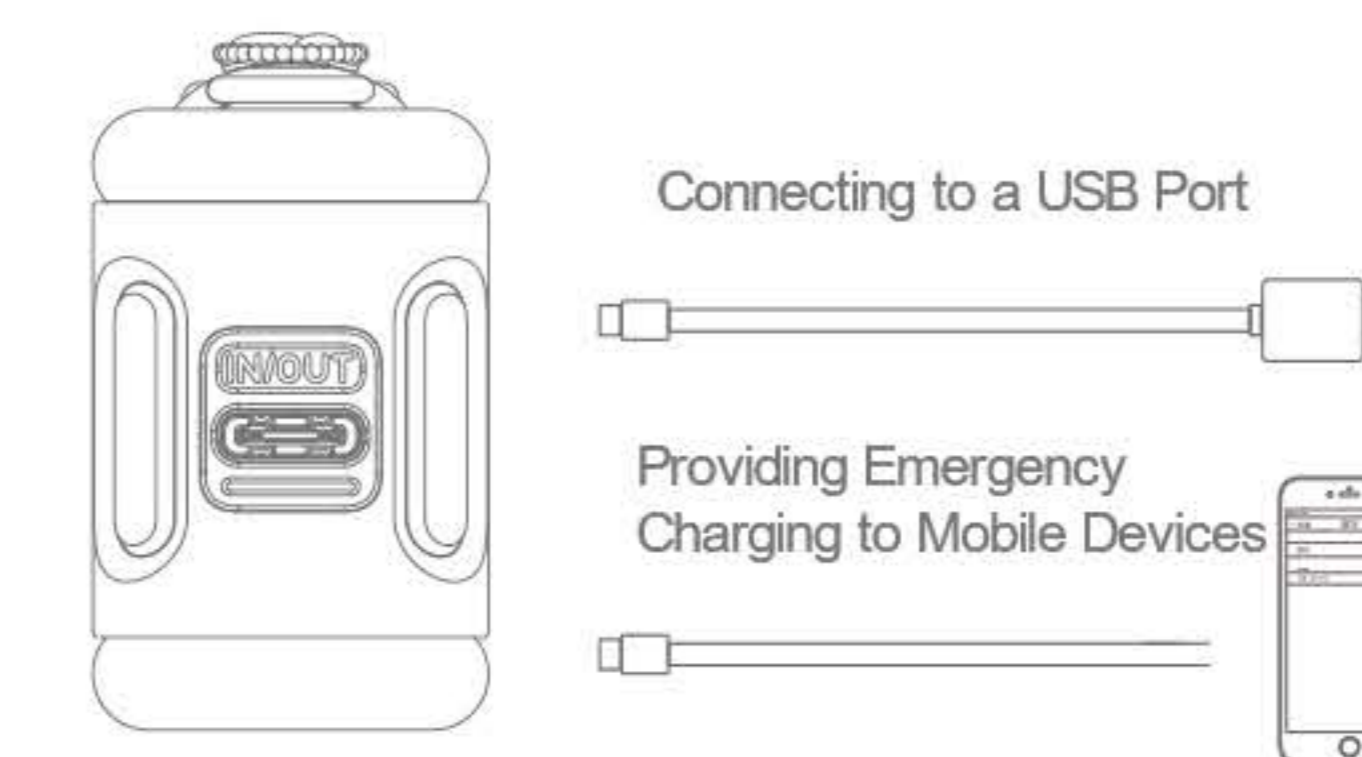
Product Charging

Charging the Product:

To charge this device, use a Type-C charging cable to connect it to a USB port on your computer. Alternatively, you can use a 5V-1A power adapter for charging. For fast charging, please use a 5V-1A power adapter.

Charging other Devices:

Using a Type-C charging cable, you can provide emergency charging for mobile devices.



Safety Instructions

1. Avoid exposure to direct sunlight, rain, and prevent severe vibration, impact, or compression.
2. Store in an indoor environment with a temperature range of -10℃ to 45℃ and relative humidity not exceeding 75%. Keep away from corrosive substances and heat sources.
3. Dispose of this product properly by taking it to designated battery recycling points. Do not dispose of it as regular household waste.
4. Made of lead-free environmentally friendly materials.
5. This product is not suitable for children under 14 years old to use alone and should be used under adult supervision.
6. This product complies with electronic standard GB8898, report number R0317120224S.

Note: The company will not be held liable for any personal or property damage resulting from the consumer's violation of the above warnings. Consumers will be responsible for any consequences arising thereof.

Package Contents

Bluetooth Earphones × 1 Charging Cable × 1 User Manual × 1 Certificate of Compliance × 1 Brand Label × 1

Friendly Reminders

- Please read the following content carefully before using this product. Improper usage or incompatible devices may damage your product or cause it to malfunction.
- Do not scratch the surface of this product with sharp objects. Avoid throwing, shaking, pressing forcefully, or attempting to disassemble the product.
- Ensure to fully charge the product at least once every three months when not in use for an extended period.
- Do not use chemicals or strong detergents to clean this product.
- After charging other devices, please promptly disconnect the connection cable to avoid draining the product's battery.

Precautions

- Always check whether the voltage of the device being charged is compatible with this product.
- Avoid placing in water, extremely high or low temperature environments.
- Keep this product out of reach of children and refrain from allowing them to play with it.
- Do not forcefully dismantle or modify the product to avoid damaging its protective features, which may result in battery heating, ignition, or explosion.
- If any abnormal odors, excessively high temperatures (normal usage may generate heat but should not be hot to touch), or changes in shape occur during use, charging, or storage, immediately cease usage and contact the dealer.
- The user is responsible for any shortened lifespan or damage to the product due to incorrect usage or storage. This is not covered under warranty or manufacturer responsibility. Thank you for your understanding.